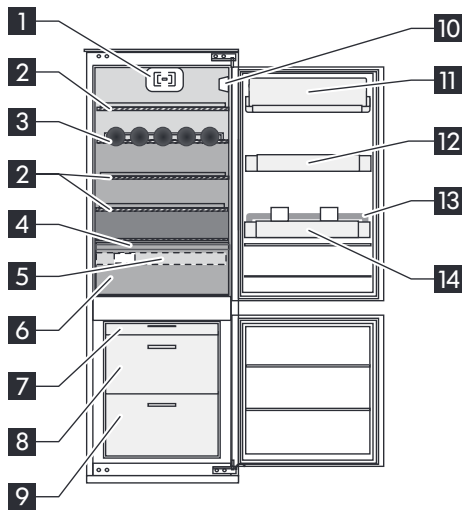


Product description

Carefully read the operating instructions before using the appliance.



Refrigerator compartment

- 1** Fan
- 2** Glass shelves
- 3** Bottle rack
- 4** Crisper Cover
- 5** Sliding crisper bin Long/Short
- 6** Crisper (vegetable components)
- 10** Control panel with LED light
- 11** Dairy balcony with lid
- 12** Door balcony
- 13** Bottle holder with dividers
- 14** Bottle balcony

- Least cold zone
- Intermediate temperature zone
- Coldest zone

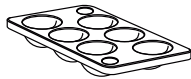
Freezer Compartment

- 7** Small drawer
- 8** Big box drawer
- 9** Lower drawer

Characteristics, technical data and images may vary according to the model.

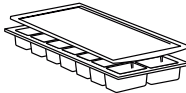
Accessories

Egg tray



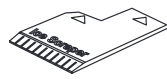
1x

Ice tray



1x

Ice scraper



1x

First Use

Connect the appliance to the power supply. The ideal food storage temperatures are already factory-set (intermediate).

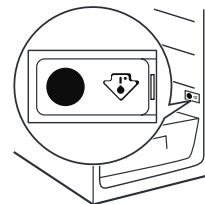
Note: after being switched on, the appliance needs 4-5 hours in order to reach the correct temperature to store a typical volume of food.

To avoid food waste, please refer to the recommended setting and storage times found in the user manual.

Important!

This appliance is sold in France.

In accordance with regulations valid in this country it must be provided with a special device (see figure) placed in the lower compartment of the fridge to indicate the coldest zone of it.



Daily use

Refrigerator and freezer operation

The appliance's refrigerator compartment features a control panel with LED lights. A different temperature can be set using the **C** button as shown in the figure.

The three green LED indicators indicate the refrigerator compartment set temperature.

The following adjustments are possible:

Leds on	Set temperature
	High (least cold)
	Medium-high
	Intermediate
	Medium-low
	Low (coldest)

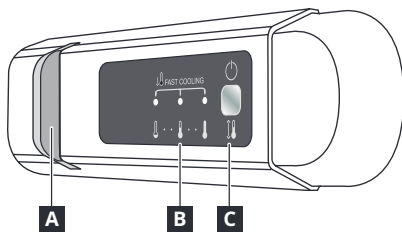
Stand-by

Press the **C** button for 3 seconds to deactivate the appliance (the control panel and lights remain off). Press the button again briefly to reactivate the appliance.

Note: This operation does not disconnect the appliance from the power supply.

Note: the ambient temperature, frequency of door opening and position of the appliance can affect the temperature inside the two compartments.

These factors must be taken into account when setting the thermostat.

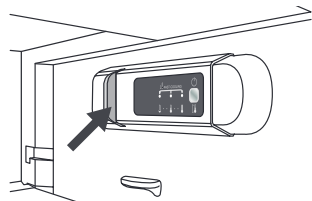


- A** Led light
- B** Refrigerator compartment temperature
- C** Button for temperature regulation and Stand-by function

LED light

LEDs last longer than traditional light bulbs, improve internal visibility and are environmentally friendly.

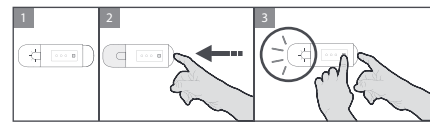
Contact the Service Centre if replacement is necessary.



Fan

The fan is pre-set to ON. You can turn the fan on/off by pressing the light button (as shown in figure 2) and at the same time the button **C** as shown in figure 3.

The light will flash just once if the fan is OFF, or it will flash 3 times if the fan is ON. If the ambient temperature exceeds 27°C, or if drops of water are present on the glass shelves, it is essential to have the fan on to ensure the proper preservation of the food. Deactivation of the fan allows energy consumption to be optimised.



Fast Cooling function (Fast Cooling)

To quickly cool the refrigerator compartment, or 6 hours before putting a large quantity of food to be frozen in the freezer compartment, turn on the "Fast Cooling" function by repeatedly pressing the button **C** until the 3 icons flash green and then stay constant.

The function automatically turns off after 30 hours and the temperature returns to the previous setting when the function is turned on.

To turn the function off manually, press the button.

Note: Avoid a direct contact between the fresh food and the food that is already frozen.

To optimize the freezing speed, the lower drawer can be removed and the food can be placed directly on the bottom of the compartment.

Refrigerator compartment

Defrosting of the refrigerator compartment is completely automatic.

The formation of water droplets on the rear internal wall of the refrigerator compartment indicates that the automatic defrosting is underway.

The defrost water automatically runs into a drain outlet and then into a container from where it evaporates.

Caution! The refrigerator accessories must not be placed in a dishwasher.

Freezer compartment

This appliance is a refrigerator with a **★***** star freezer compartment.

Packaged frozen food can be stored for the period of time indicated on the packaging.

Once defrosted, food must be used within 24 hours.

Removing the freezer drawers

Pull the drawers all the way out, lift them up and remove.

Note: to maximize available space, the freezer compartment can also be used without the drawers inserted. Arrange the fresh food in the freezing area, leaving enough space around it to allow air to circulate freely. Avoid fresh food to come into direct contact with frozen food. After placing food in the compartment, make sure the freezer compartment door closes properly.

Load limits are determined by baskets, flaps, drawers, shelves etc. Make sure that these components can still close easily after loading

Making ice cubes

Fill the ice cube tray 2/3 full with water and place it in the freezer compartment. Do not use sharp or pointed instruments to detach the tray.