



## Phelps Memorial Hospital

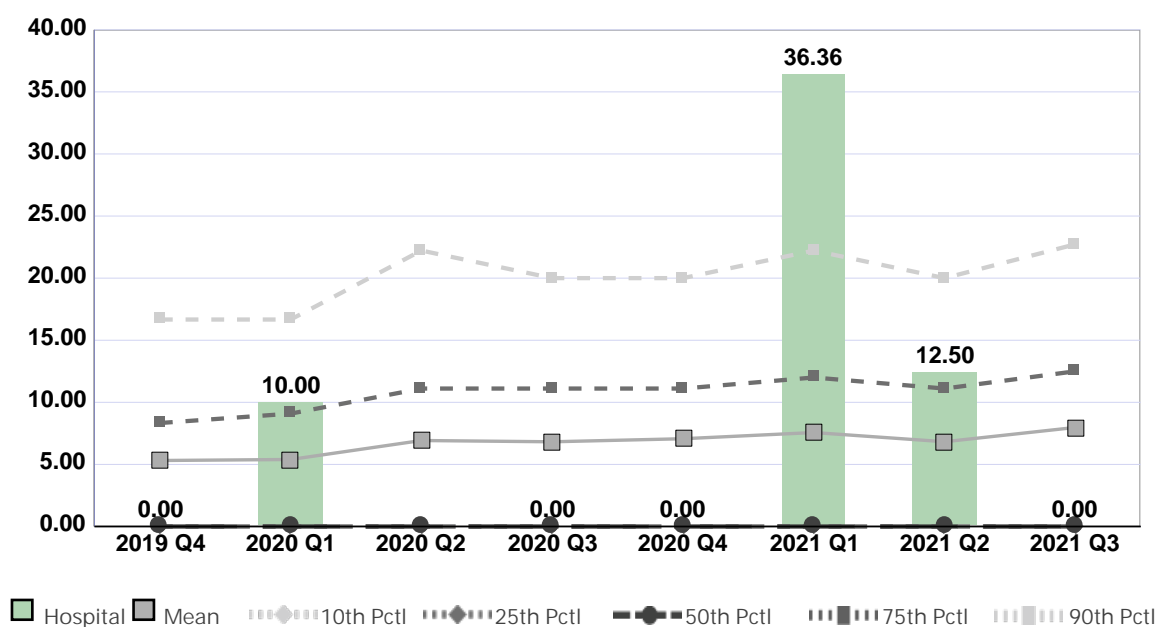
Compared by: All Hospitals

Peer Group: All Hospitals

Unit Type: Adult Critical Care

Unit: Critical Care

Measure: Percent of Surveyed Patients with Hospital Acquired Pressure Injuries



Quarter	2019 Q4	2020 Q1	2020 Q2	2020 Q3	2020 Q4	2021 Q1	2021 Q2	2021 Q3	Average
Unit	0.00	10.00	No Data	0.00	0.00	36.36	12.50	0.00	8.41
Mean	5.31	5.40	6.93	6.82	7.07	7.57	6.83	7.98	6.74
Standard Deviation	8.34	8.50	11.80	10.45	10.23	10.72	10.14	12.13	10.29
10th Percentile	0.00	0.00	0.00	0.00	0.00	0.00	0.00	0.00	0.00
25th Percentile	0.00	0.00	0.00	0.00	0.00	0.00	0.00	0.00	0.00
50th Percentile (Median)	0.00	0.00	0.00	0.00	0.00	0.00	0.00	0.00	0.00
75th Percentile	8.33	9.09	11.11	11.11	11.11	12.00	11.11	12.50	10.80
90th Percentile	16.67	16.67	22.22	20.00	20.00	22.22	20.00	22.73	20.06
# Units	2,233	2,058	1,522	2,024	1,921	2,081	2,175	1,976	1,999

If the number of units or hospitals is less than five, comparison data are suppressed to maintain confidentiality. If the number of units or hospitals is less than 20, comparison data may vary substantially over the time period and should be used with caution. For additional information, please refer to NDNQI reference documents.

## Phelps Memorial Hospital

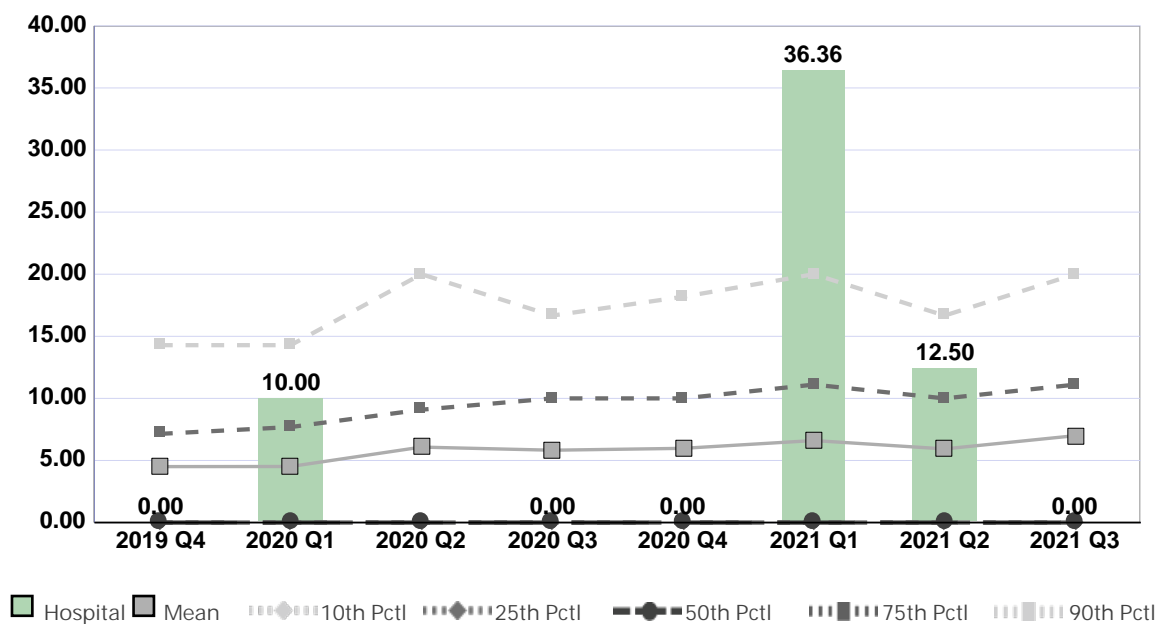
Compared by: All Hospitals

Peer Group: All Hospitals

Unit Type: Adult Critical Care

Unit: Critical Care

Measure: Percent of Surveyed Patients with Hospital Acquired Pressure Injuries Stage 2 and Above



Quarter	2019 Q4	2020 Q1	2020 Q2	2020 Q3	2020 Q4	2021 Q1	2021 Q2	2021 Q3	Average
Unit	0.00	10.00	No Data	0.00	0.00	36.36	12.50	0.00	8.41
Mean	4.51	4.52	6.08	5.83	5.98	6.61	5.93	7.00	5.81
Standard Deviation	7.64	7.60	11.32	9.30	9.21	9.90	9.23	11.37	9.45
10th Percentile	0.00	0.00	0.00	0.00	0.00	0.00	0.00	0.00	0.00
25th Percentile	0.00	0.00	0.00	0.00	0.00	0.00	0.00	0.00	0.00
50th Percentile (Median)	0.00	0.00	0.00	0.00	0.00	0.00	0.00	0.00	0.00
75th Percentile	7.14	7.69	9.09	10.00	10.00	11.11	10.00	11.11	9.52
90th Percentile	14.29	14.29	20.00	16.67	18.18	20.00	16.67	20.00	17.51
# Units	2,233	2,058	1,522	2,024	1,921	2,081	2,175	1,976	1,999

If the number of units or hospitals is less than five, comparison data are suppressed to maintain confidentiality. If the number of units or hospitals is less than 20, comparison data may vary substantially over the time period and should be used with caution. For additional information, please refer to NDNQI reference documents.

## Phelps Memorial Hospital

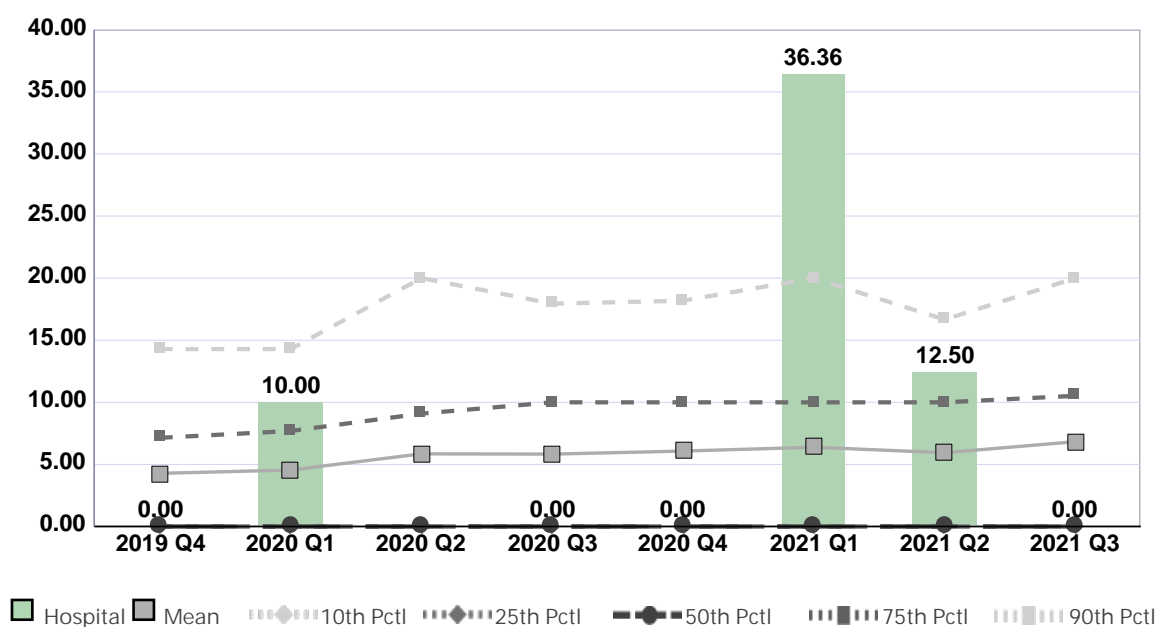
Compared by: All Hospitals

Peer Group: All Hospitals

Unit Type: Adult Critical Care

Unit: Critical Care

Measure: Percent of Surveyed Patients with Unit Acquired Pressure Injuries



Quarter	2019 Q4	2020 Q1	2020 Q2	2020 Q3	2020 Q4	2021 Q1	2021 Q2	2021 Q3	Average
Unit	0.00	10.00	No Data	0.00	0.00	36.36	12.50	0.00	8.41
Mean	4.28	4.55	5.85	5.83	6.08	6.39	5.94	6.83	5.72
Standard Deviation	7.46	7.89	10.94	9.47	9.50	9.89	9.56	11.38	9.51
10th Percentile	0.00	0.00	0.00	0.00	0.00	0.00	0.00	0.00	0.00
25th Percentile	0.00	0.00	0.00	0.00	0.00	0.00	0.00	0.00	0.00
50th Percentile (Median)	0.00	0.00	0.00	0.00	0.00	0.00	0.00	0.00	0.00
75th Percentile	7.14	7.69	9.09	10.00	10.00	10.00	10.00	10.53	9.31
90th Percentile	14.29	14.29	20.00	17.95	18.18	20.00	16.67	20.00	17.67
# Units	2,156	1,960	1,441	1,912	1,804	1,945	2,030	1,842	1,886

If the number of units or hospitals is less than five, comparison data are suppressed to maintain confidentiality. If the number of units or hospitals is less than 20, comparison data may vary substantially over the time period and should be used with caution. For additional information, please refer to NDNQI reference documents.

## Phelps Memorial Hospital

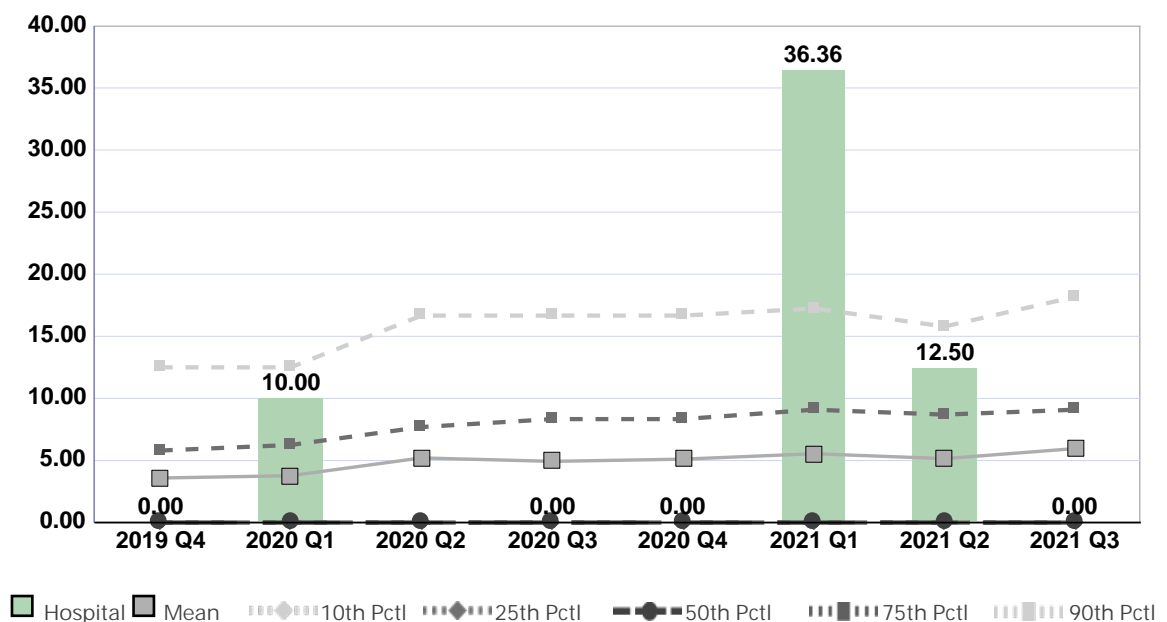
Compared by: All Hospitals

Peer Group: All Hospitals

Unit Type: Adult Critical Care

Unit: Critical Care

Measure: Percent of Surveyed Patients with Unit Acquired Pressure Injuries Stage 2 and Above



Quarter	2019 Q4	2020 Q1	2020 Q2	2020 Q3	2020 Q4	2021 Q1	2021 Q2	2021 Q3	Average
Unit	0.00	10.00	No Data	0.00	0.00	36.36	12.50	0.00	8.41
Mean	3.59	3.78	5.21	4.93	5.11	5.55	5.15	5.96	4.91
Standard Deviation	6.78	6.98	10.50	8.35	8.46	9.09	8.67	10.64	8.68
10th Percentile	0.00	0.00	0.00	0.00	0.00	0.00	0.00	0.00	0.00
25th Percentile	0.00	0.00	0.00	0.00	0.00	0.00	0.00	0.00	0.00
50th Percentile (Median)	0.00	0.00	0.00	0.00	0.00	0.00	0.00	0.00	0.00
75th Percentile	5.80	6.25	7.69	8.33	8.33	9.09	8.70	9.09	7.91
90th Percentile	12.50	12.50	16.67	16.67	16.67	17.24	15.79	18.18	15.78
# Units	2,156	1,960	1,441	1,912	1,804	1,945	2,029	1,842	1,886

If the number of units or hospitals is less than five, comparison data are suppressed to maintain confidentiality. If the number of units or hospitals is less than 20, comparison data may vary substantially over the time period and should be used with caution. For additional information, please refer to NDNQI reference documents.

## Phelps Memorial Hospital

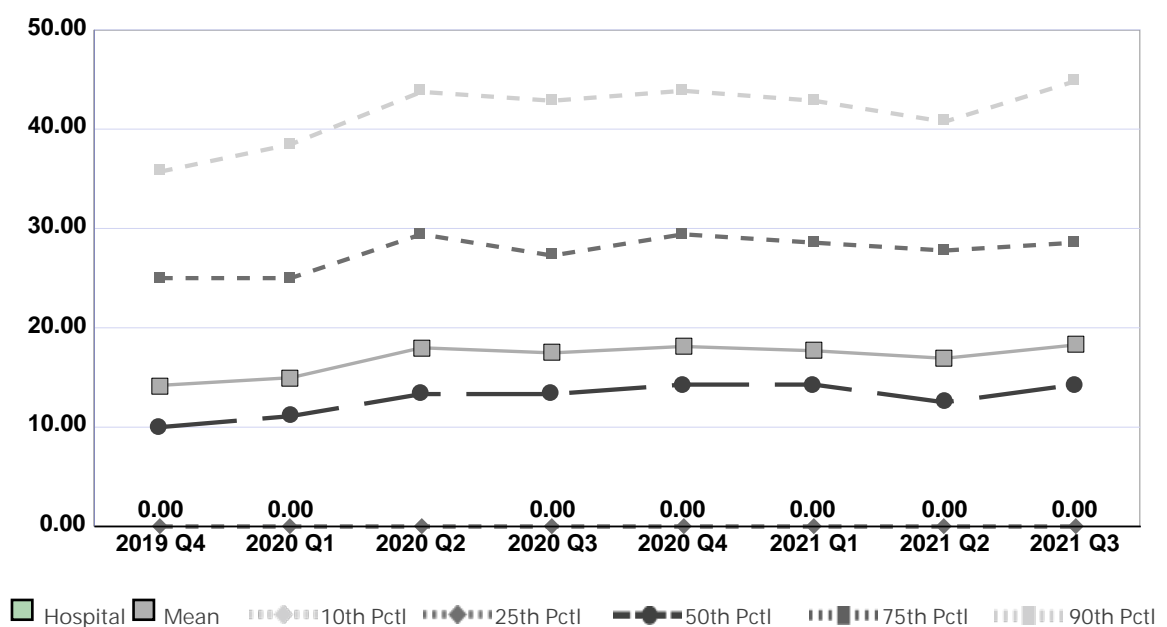
Compared by: All Hospitals

Peer Group: All Hospitals

Unit Type: Adult Critical Care

Unit: Critical Care

Measure: Percent of Patients with Physical Restraints (Limb and/or Vest)



Quarter	2019 Q4	2020 Q1	2020 Q2	2020 Q3	2020 Q4	2021 Q1	2021 Q2	2021 Q3	Average
Unit	0.00	0.00	No Data	0.00	0.00	0.00	0.00	0.00	0.00
Mean	14.21	14.98	17.99	17.48	18.12	17.69	16.93	18.27	16.96
Standard Deviation	15.67	16.50	19.08	18.56	18.69	18.06	17.83	18.81	17.90
10th Percentile	0.00	0.00	0.00	0.00	0.00	0.00	0.00	0.00	0.00
25th Percentile	0.00	0.00	0.00	0.00	0.00	0.00	0.00	0.00	0.00
50th Percentile (Median)	10.00	11.11	13.33	13.33	14.29	14.29	12.50	14.29	12.89
75th Percentile	25.00	25.00	29.41	27.27	29.41	28.57	27.78	28.57	27.63
90th Percentile	35.71	38.46	43.75	42.86	43.86	42.86	40.74	44.83	41.63
# Units	1,922	1,767	1,319	1,714	1,645	1,764	1,817	1,646	1,699

If the number of units or hospitals is less than five, comparison data are suppressed to maintain confidentiality. If the number of units or hospitals is less than 20, comparison data may vary substantially over the time period and should be used with caution. For additional information, please refer to NDNQI reference documents.

## Phelps Memorial Hospital

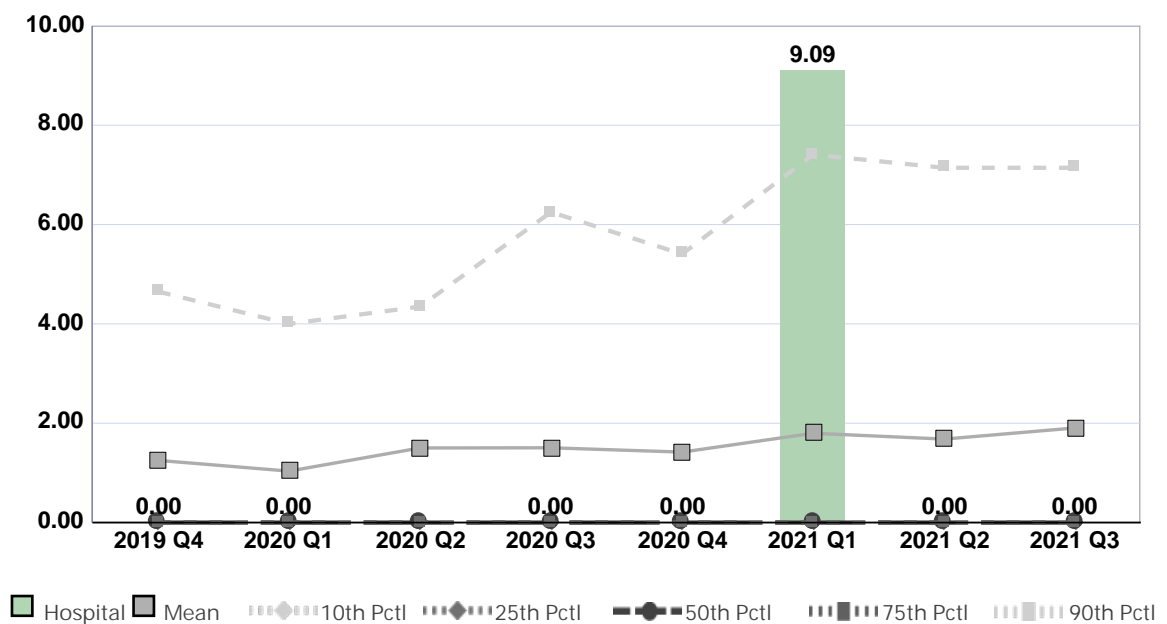
Compared by: All Hospitals

Peer Group: All Hospitals

Unit Type: Adult Critical Care

Unit: Critical Care

Measure: Percent of Surveyed Patients with Hospital Acquired Medical Device Related Pressure Injury



Quarter	2019 Q4	2020 Q1	2020 Q2	2020 Q3	2020 Q4	2021 Q1	2021 Q2	2021 Q3	Average
Unit	0.00	0.00	No Data	0.00	0.00	9.09	0.00	0.00	1.30
Mean	1.25	1.04	1.50	1.51	1.42	1.80	1.68	1.91	1.51
Standard Deviation	4.15	3.44	6.35	4.80	4.75	5.27	5.18	6.20	5.02
10th Percentile	0.00	0.00	0.00	0.00	0.00	0.00	0.00	0.00	0.00
25th Percentile	0.00	0.00	0.00	0.00	0.00	0.00	0.00	0.00	0.00
50th Percentile (Median)	0.00	0.00	0.00	0.00	0.00	0.00	0.00	0.00	0.00
75th Percentile	0.00	0.00	0.00	0.00	0.00	0.00	0.00	0.00	0.00
90th Percentile	4.65	4.00	4.35	6.25	5.41	7.41	7.14	7.14	5.79
# Units	2,233	2,058	1,522	2,024	1,921	2,081	2,175	1,976	1,999

If the number of units or hospitals is less than five, comparison data are suppressed to maintain confidentiality. If the number of units or hospitals is less than 20, comparison data may vary substantially over the time period and should be used with caution. For additional information, please refer to NDNQI reference documents.

## Phelps Memorial Hospital

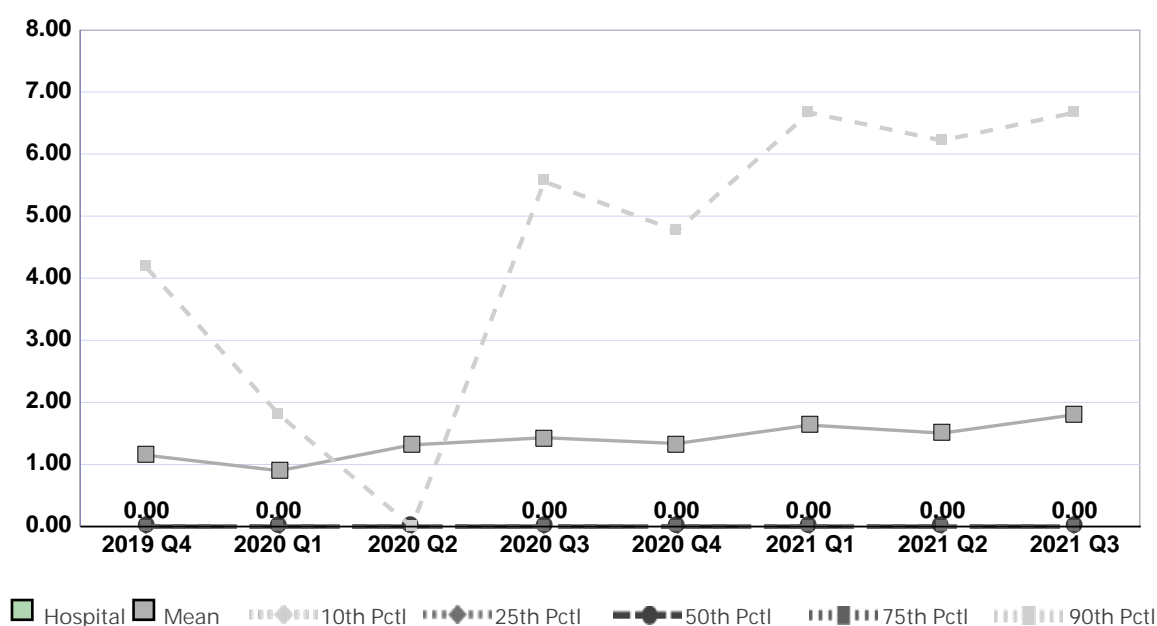
Compared by: All Hospitals

Peer Group: All Hospitals

Unit Type: Adult Critical Care

Unit: Critical Care

Measure: Percent of Surveyed Patients with Unit Acquired Medical Device Related Pressure Injury



Quarter	2019 Q4	2020 Q1	2020 Q2	2020 Q3	2020 Q4	2021 Q1	2021 Q2	2021 Q3	Average
Unit	0.00	0.00	No Data	0.00	0.00	0.00	0.00	0.00	0.00
Mean	1.15	0.90	1.32	1.43	1.34	1.63	1.51	1.80	1.38
Standard Deviation	4.01	3.16	5.98	4.66	4.66	4.93	4.94	6.02	4.80
10th Percentile	0.00	0.00	0.00	0.00	0.00	0.00	0.00	0.00	0.00
25th Percentile	0.00	0.00	0.00	0.00	0.00	0.00	0.00	0.00	0.00
50th Percentile (Median)	0.00	0.00	0.00	0.00	0.00	0.00	0.00	0.00	0.00
75th Percentile	0.00	0.00	0.00	0.00	0.00	0.00	0.00	0.00	0.00
90th Percentile	4.17	1.80	0.00	5.56	4.76	6.67	6.22	6.67	4.48
# Units	2,156	1,960	1,441	1,912	1,804	1,945	2,030	1,842	1,886

If the number of units or hospitals is less than five, comparison data are suppressed to maintain confidentiality. If the number of units or hospitals is less than 20, comparison data may vary substantially over the time period and should be used with caution. For additional information, please refer to NDNQI reference documents.



## Phelps Memorial Hospital

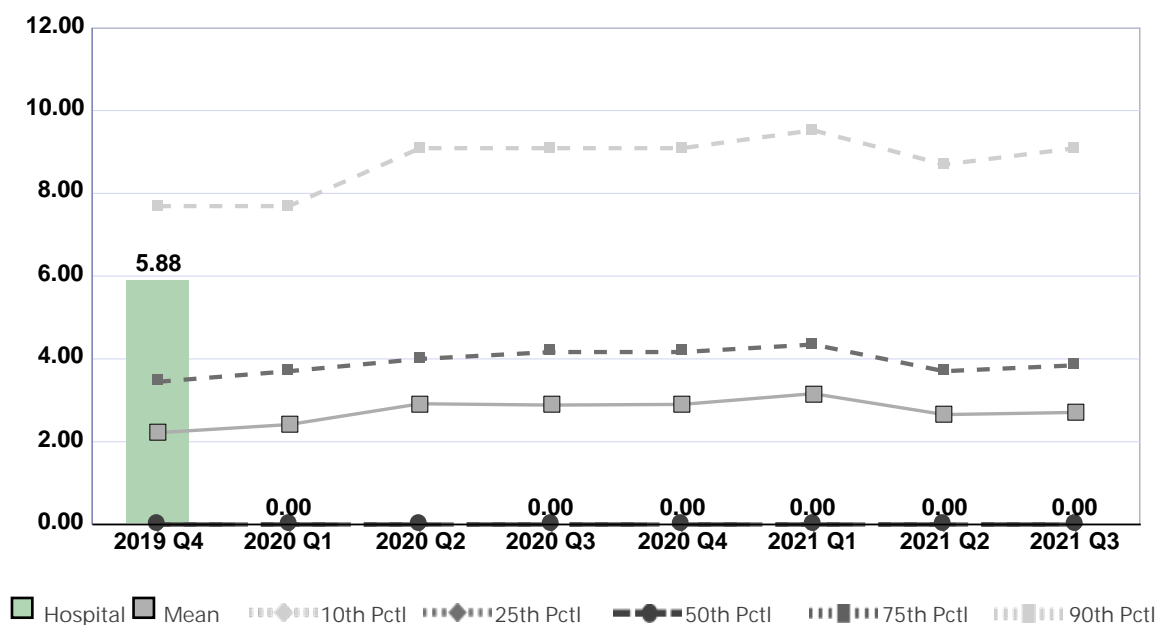
Compared by: All Hospitals

Peer Group: All Hospitals

Unit Type: Adult Step Down

Unit: Intermediate Care (5 South)

Measure: Percent of Surveyed Patients with Hospital Acquired Pressure Injuries



Quarter	2019 Q4	2020 Q1	2020 Q2	2020 Q3	2020 Q4	2021 Q1	2021 Q2	2021 Q3	Average
Unit	5.88	0.00	No Data	0.00	0.00	0.00	0.00	0.00	0.84
Mean	2.22	2.42	2.92	2.89	2.90	3.16	2.66	2.71	2.73
Standard Deviation	4.53	4.85	6.57	6.51	5.51	6.68	5.76	5.64	5.76
10th Percentile	0.00	0.00	0.00	0.00	0.00	0.00	0.00	0.00	0.00
25th Percentile	0.00	0.00	0.00	0.00	0.00	0.00	0.00	0.00	0.00
50th Percentile (Median)	0.00	0.00	0.00	0.00	0.00	0.00	0.00	0.00	0.00
75th Percentile	3.45	3.70	4.00	4.17	4.17	4.35	3.70	3.85	3.92
90th Percentile	7.69	7.69	9.09	9.09	9.09	9.52	8.70	9.09	8.75
# Units	1,519	1,420	1,021	1,394	1,286	1,438	1,495	1,347	1,365

If the number of units or hospitals is less than five, comparison data are suppressed to maintain confidentiality. If the number of units or hospitals is less than 20, comparison data may vary substantially over the time period and should be used with caution. For additional information, please refer to NDNQI reference documents.



## Phelps Memorial Hospital

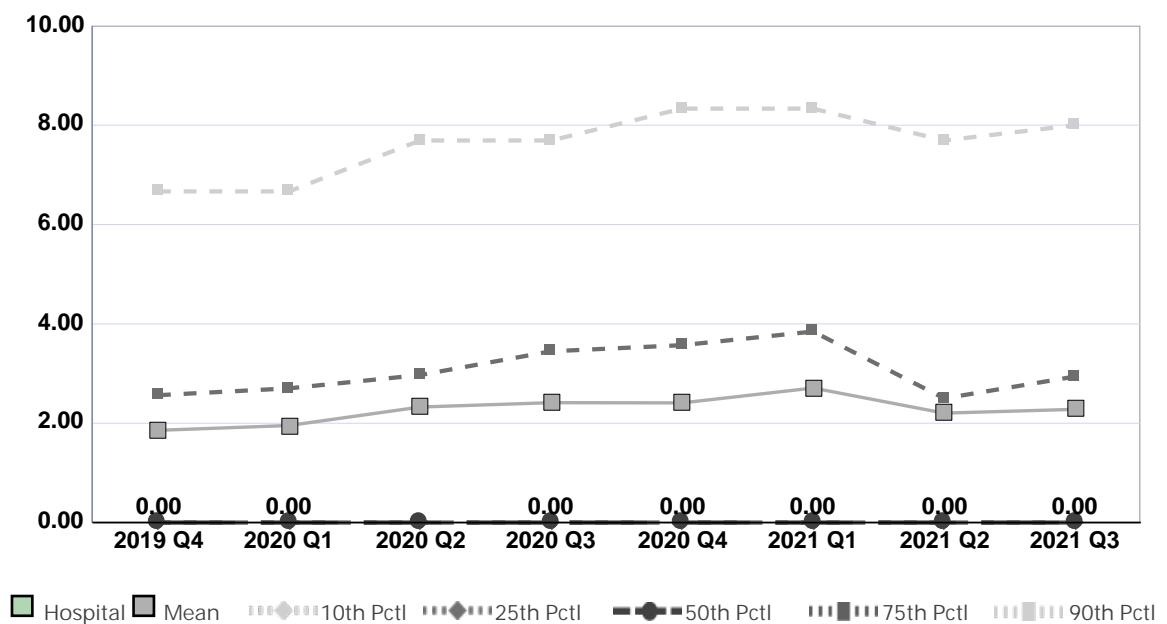
Compared by: All Hospitals

Peer Group: All Hospitals

Unit Type: Adult Step Down

Unit: Intermediate Care (5 South)

Measure: Percent of Surveyed Patients with Hospital Acquired Pressure Injuries Stage 2 and Above



Quarter	2019 Q4	2020 Q1	2020 Q2	2020 Q3	2020 Q4	2021 Q1	2021 Q2	2021 Q3	Average
Unit	0.00	0.00	No Data	0.00	0.00	0.00	0.00	0.00	0.00
Mean	1.86	1.95	2.33	2.41	2.41	2.71	2.20	2.28	2.27
Standard Deviation	3.95	4.29	5.45	5.79	4.92	6.08	5.09	5.06	5.08
10th Percentile	0.00	0.00	0.00	0.00	0.00	0.00	0.00	0.00	0.00
25th Percentile	0.00	0.00	0.00	0.00	0.00	0.00	0.00	0.00	0.00
50th Percentile (Median)	0.00	0.00	0.00	0.00	0.00	0.00	0.00	0.00	0.00
75th Percentile	2.56	2.70	2.97	3.45	3.57	3.85	2.50	2.94	3.07
90th Percentile	6.67	6.67	7.69	7.69	8.33	8.33	7.69	8.00	7.63
# Units	1,519	1,420	1,021	1,394	1,286	1,438	1,495	1,347	1,365

If the number of units or hospitals is less than five, comparison data are suppressed to maintain confidentiality. If the number of units or hospitals is less than 20, comparison data may vary substantially over the time period and should be used with caution. For additional information, please refer to NDNQI reference documents.

## Phelps Memorial Hospital

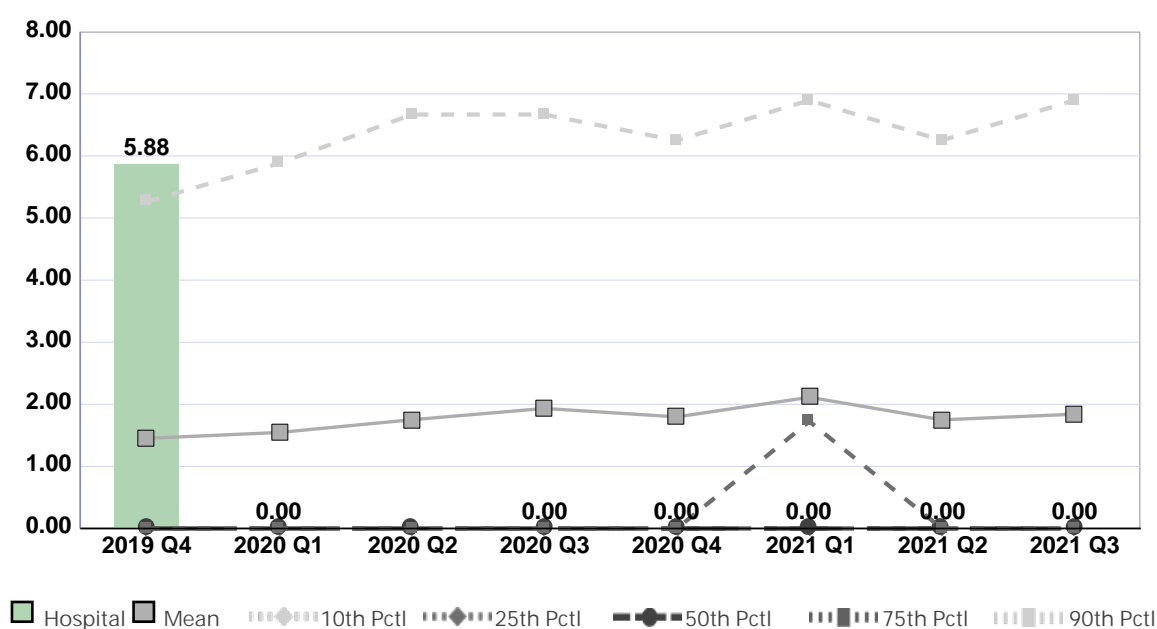
Compared by: All Hospitals

Peer Group: All Hospitals

Unit Type: Adult Step Down

Unit: Intermediate Care (5 South)

Measure: Percent of Surveyed Patients with Unit Acquired Pressure Injuries



Quarter	2019 Q4	2020 Q1	2020 Q2	2020 Q3	2020 Q4	2021 Q1	2021 Q2	2021 Q3	Average
Unit	5.88	0.00	No Data	0.00	0.00	0.00	0.00	0.00	0.84
Mean	1.45	1.55	1.75	1.93	1.80	2.11	1.75	1.84	1.77
Standard Deviation	3.68	3.73	4.89	5.50	4.36	5.52	4.45	4.19	4.54
10th Percentile	0.00	0.00	0.00	0.00	0.00	0.00	0.00	0.00	0.00
25th Percentile	0.00	0.00	0.00	0.00	0.00	0.00	0.00	0.00	0.00
50th Percentile (Median)	0.00	0.00	0.00	0.00	0.00	0.00	0.00	0.00	0.00
75th Percentile	0.00	0.00	0.00	0.00	0.00	1.72	0.00	0.00	0.22
90th Percentile	5.26	5.88	6.67	6.67	6.25	6.90	6.25	6.90	6.35
# Units	1,464	1,346	969	1,322	1,230	1,329	1,373	1,232	1,283

If the number of units or hospitals is less than five, comparison data are suppressed to maintain confidentiality. If the number of units or hospitals is less than 20, comparison data may vary substantially over the time period and should be used with caution. For additional information, please refer to NDNQI reference documents.

## Phelps Memorial Hospital

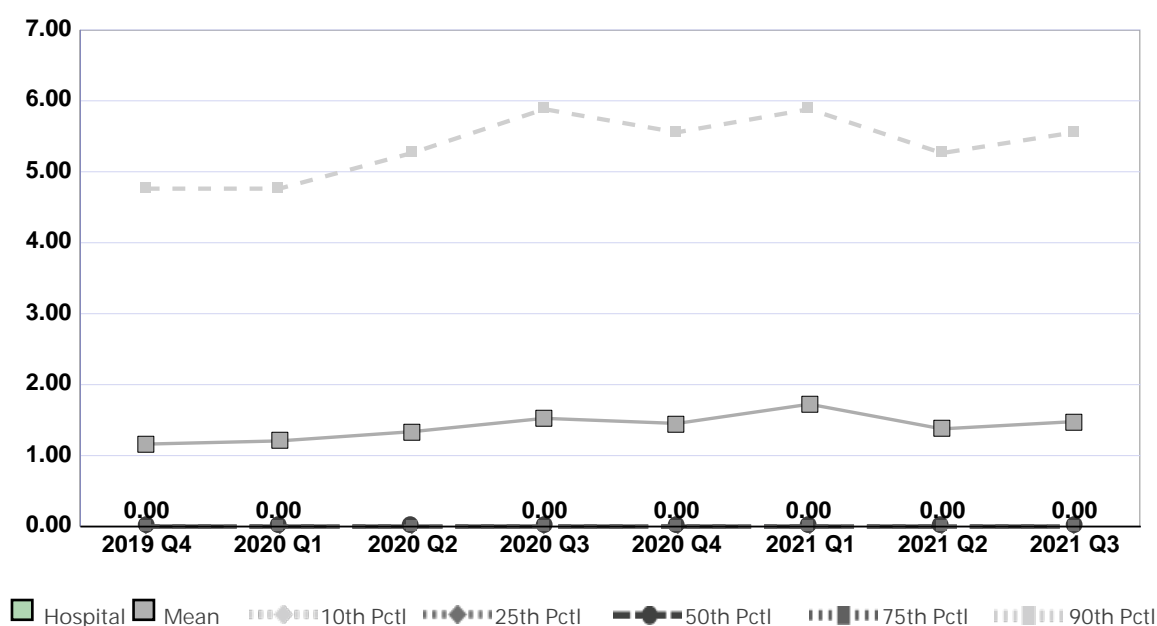
Compared by: All Hospitals

Peer Group: All Hospitals

Unit Type: Adult Step Down

Unit: Intermediate Care (5 South)

Measure: Percent of Surveyed Patients with Unit Acquired Pressure Injuries Stage 2 and Above



Quarter	2019 Q4	2020 Q1	2020 Q2	2020 Q3	2020 Q4	2021 Q1	2021 Q2	2021 Q3	Average
Unit	0.00	0.00	No Data	0.00	0.00	0.00	0.00	0.00	0.00
Mean	1.16	1.21	1.34	1.53	1.45	1.72	1.38	1.48	1.41
Standard Deviation	3.11	3.13	4.13	4.74	3.75	4.92	3.71	3.68	3.89
10th Percentile	0.00	0.00	0.00	0.00	0.00	0.00	0.00	0.00	0.00
25th Percentile	0.00	0.00	0.00	0.00	0.00	0.00	0.00	0.00	0.00
50th Percentile (Median)	0.00	0.00	0.00	0.00	0.00	0.00	0.00	0.00	0.00
75th Percentile	0.00	0.00	0.00	0.00	0.00	0.00	0.00	0.00	0.00
90th Percentile	4.76	4.76	5.26	5.88	5.56	5.88	5.26	5.56	5.37
# Units	1,464	1,346	969	1,322	1,230	1,329	1,373	1,232	1,283

If the number of units or hospitals is less than five, comparison data are suppressed to maintain confidentiality. If the number of units or hospitals is less than 20, comparison data may vary substantially over the time period and should be used with caution. For additional information, please refer to NDNQI reference documents.

## Phelps Memorial Hospital

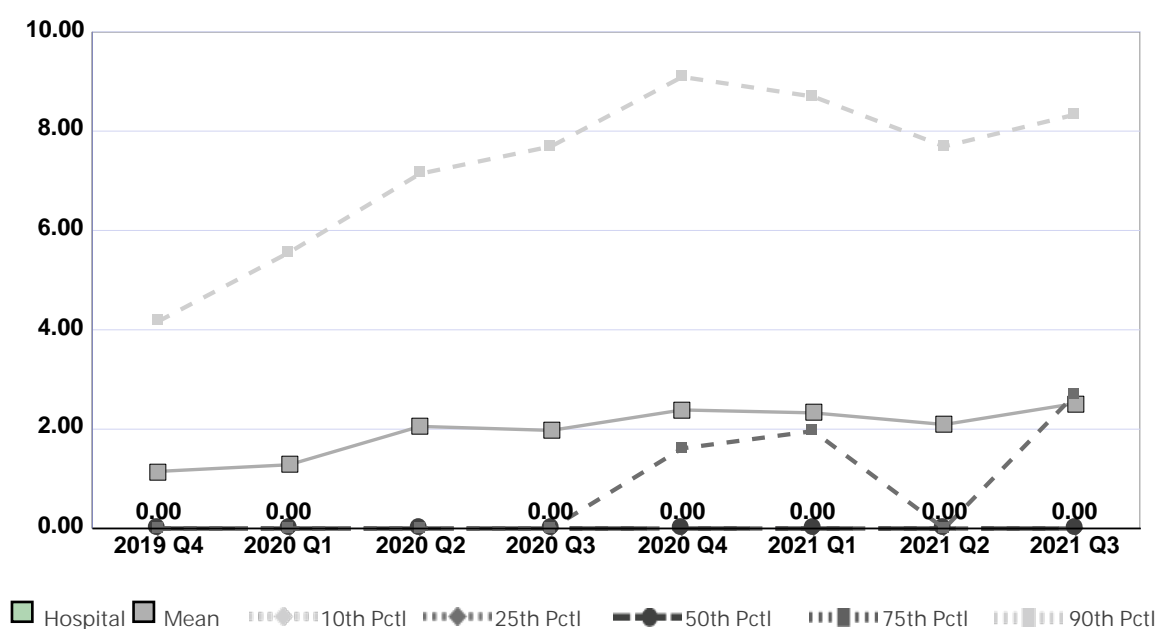
Compared by: All Hospitals

Peer Group: All Hospitals

Unit Type: Adult Step Down

Unit: Intermediate Care (5 South)

Measure: Percent of Patients with Physical Restraints (Limb and/or Vest)



Quarter	2019 Q4	2020 Q1	2020 Q2	2020 Q3	2020 Q4	2021 Q1	2021 Q2	2021 Q3	Average
Unit	0.00	0.00	No Data	0.00	0.00	0.00	0.00	0.00	0.00
Mean	1.15	1.28	2.06	1.98	2.39	2.33	2.09	2.52	1.97
Standard Deviation	3.70	3.48	6.83	4.88	5.74	5.43	5.17	6.24	5.18
10th Percentile	0.00	0.00	0.00	0.00	0.00	0.00	0.00	0.00	0.00
25th Percentile	0.00	0.00	0.00	0.00	0.00	0.00	0.00	0.00	0.00
50th Percentile (Median)	0.00	0.00	0.00	0.00	0.00	0.00	0.00	0.00	0.00
75th Percentile	0.00	0.00	0.00	0.00	1.61	1.96	0.00	2.70	0.78
90th Percentile	4.17	5.56	7.14	7.69	9.09	8.70	7.69	8.33	7.30
# Units	1,305	1,217	874	1,160	1,086	1,184	1,226	1,097	1,144

If the number of units or hospitals is less than five, comparison data are suppressed to maintain confidentiality. If the number of units or hospitals is less than 20, comparison data may vary substantially over the time period and should be used with caution. For additional information, please refer to NDNQI reference documents.

## Phelps Memorial Hospital

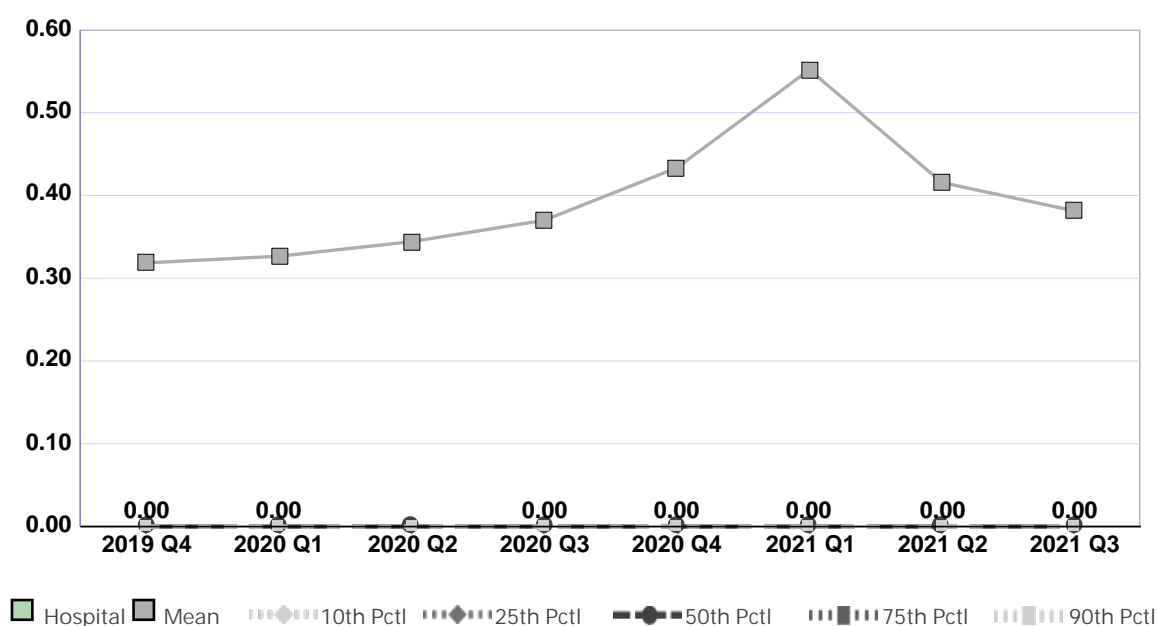
Compared by: All Hospitals

Peer Group: All Hospitals

Unit Type: Adult Step Down

Unit: Intermediate Care (5 South)

Measure: Percent of Surveyed Patients with Hospital Acquired Medical Device Related Pressure Injury



Quarter	2019 Q4	2020 Q1	2020 Q2	2020 Q3	2020 Q4	2021 Q1	2021 Q2	2021 Q3	Average
Unit	0.00	0.00	No Data	0.00	0.00	0.00	0.00	0.00	0.00
Mean	0.32	0.33	0.34	0.37	0.43	0.55	0.42	0.38	0.39
Standard Deviation	1.77	1.58	2.19	2.12	2.00	2.28	1.98	1.83	1.97
10th Percentile	0.00	0.00	0.00	0.00	0.00	0.00	0.00	0.00	0.00
25th Percentile	0.00	0.00	0.00	0.00	0.00	0.00	0.00	0.00	0.00
50th Percentile (Median)	0.00	0.00	0.00	0.00	0.00	0.00	0.00	0.00	0.00
75th Percentile	0.00	0.00	0.00	0.00	0.00	0.00	0.00	0.00	0.00
90th Percentile	0.00	0.00	0.00	0.00	0.00	0.00	0.00	0.00	0.00
# Units	1,519	1,420	1,021	1,394	1,286	1,438	1,495	1,347	1,365

If the number of units or hospitals is less than five, comparison data are suppressed to maintain confidentiality. If the number of units or hospitals is less than 20, comparison data may vary substantially over the time period and should be used with caution. For additional information, please refer to NDNQI reference documents.

## Phelps Memorial Hospital

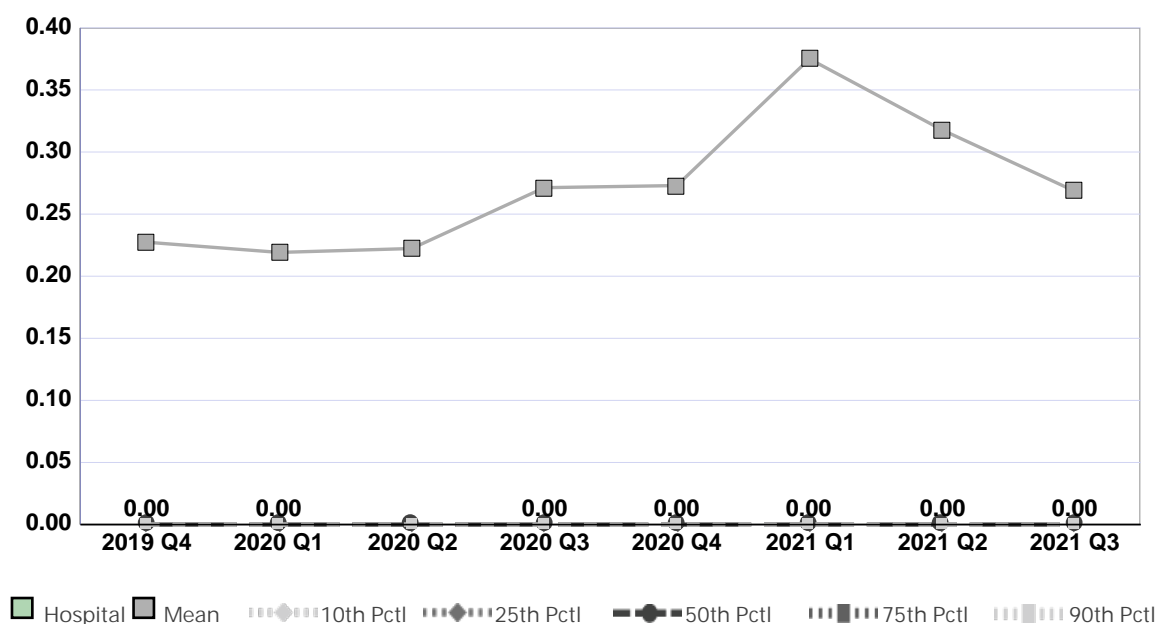
Compared by: All Hospitals

Peer Group: All Hospitals

Unit Type: Adult Step Down

Unit: Intermediate Care (5 South)

Measure: Percent of Surveyed Patients with Unit Acquired Medical Device Related Pressure Injury



Quarter	2019 Q4	2020 Q1	2020 Q2	2020 Q3	2020 Q4	2021 Q1	2021 Q2	2021 Q3	Average
Unit	0.00	0.00	No Data	0.00	0.00	0.00	0.00	0.00	0.00
Mean	0.23	0.22	0.22	0.27	0.27	0.37	0.32	0.27	0.27
Standard Deviation	1.60	1.23	1.94	1.92	1.61	1.76	1.69	1.58	1.67
10th Percentile	0.00	0.00	0.00	0.00	0.00	0.00	0.00	0.00	0.00
25th Percentile	0.00	0.00	0.00	0.00	0.00	0.00	0.00	0.00	0.00
50th Percentile (Median)	0.00	0.00	0.00	0.00	0.00	0.00	0.00	0.00	0.00
75th Percentile	0.00	0.00	0.00	0.00	0.00	0.00	0.00	0.00	0.00
90th Percentile	0.00	0.00	0.00	0.00	0.00	0.00	0.00	0.00	0.00
# Units	1,464	1,346	969	1,322	1,230	1,329	1,373	1,232	1,283

If the number of units or hospitals is less than five, comparison data are suppressed to maintain confidentiality. If the number of units or hospitals is less than 20, comparison data may vary substantially over the time period and should be used with caution. For additional information, please refer to NDNQI reference documents.

## Phelps Memorial Hospital

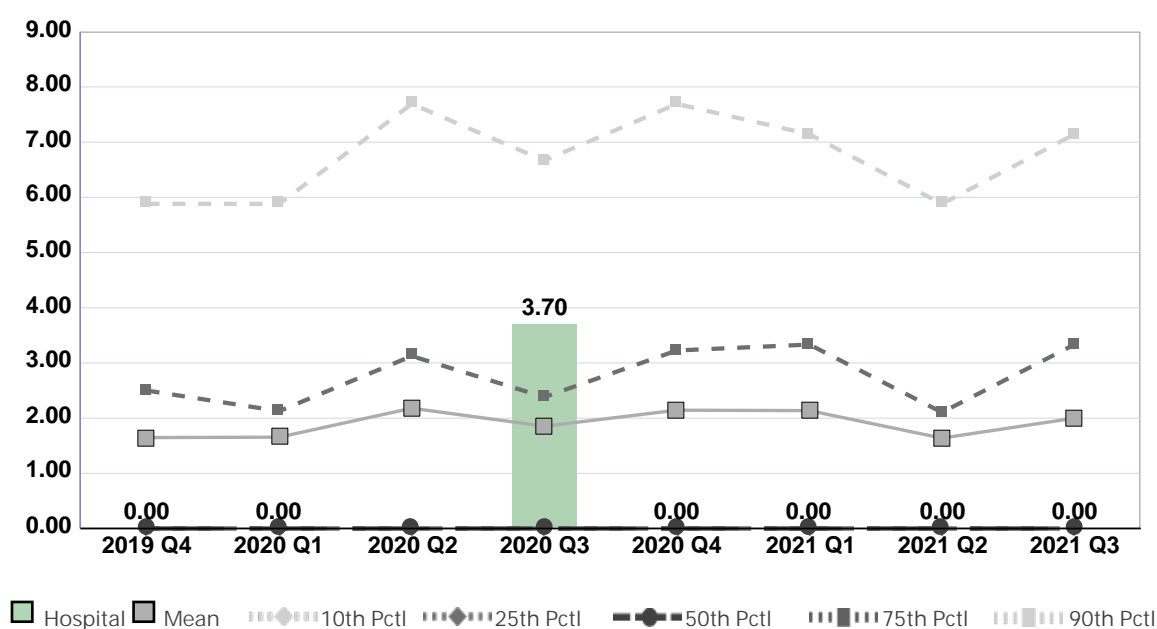
Compared by: All Hospitals

Peer Group: All Hospitals

Unit Type: Adult Medical

Unit: Medicine (5N)

Measure: Percent of Surveyed Patients with Hospital Acquired Pressure Injuries



Quarter	2019 Q4	2020 Q1	2020 Q2	2020 Q3	2020 Q4	2021 Q1	2021 Q2	2021 Q3	Average
Unit	0.00	0.00	No Data	3.70	0.00	0.00	0.00	0.00	0.53
Mean	1.65	1.66	2.18	1.85	2.14	2.14	1.64	2.00	1.91
Standard Deviation	3.51	3.56	4.63	4.21	4.46	4.87	3.44	4.05	4.09
10th Percentile	0.00	0.00	0.00	0.00	0.00	0.00	0.00	0.00	0.00
25th Percentile	0.00	0.00	0.00	0.00	0.00	0.00	0.00	0.00	0.00
50th Percentile (Median)	0.00	0.00	0.00	0.00	0.00	0.00	0.00	0.00	0.00
75th Percentile	2.50	2.13	3.13	2.38	3.23	3.33	2.11	3.33	2.77
90th Percentile	5.88	5.88	7.69	6.67	7.69	7.14	5.88	7.14	6.75
# Units	1,997	1,819	1,297	1,832	1,671	1,837	1,957	1,764	1,772

If the number of units or hospitals is less than five, comparison data are suppressed to maintain confidentiality. If the number of units or hospitals is less than 20, comparison data may vary substantially over the time period and should be used with caution. For additional information, please refer to NDNQI reference documents.

## Phelps Memorial Hospital

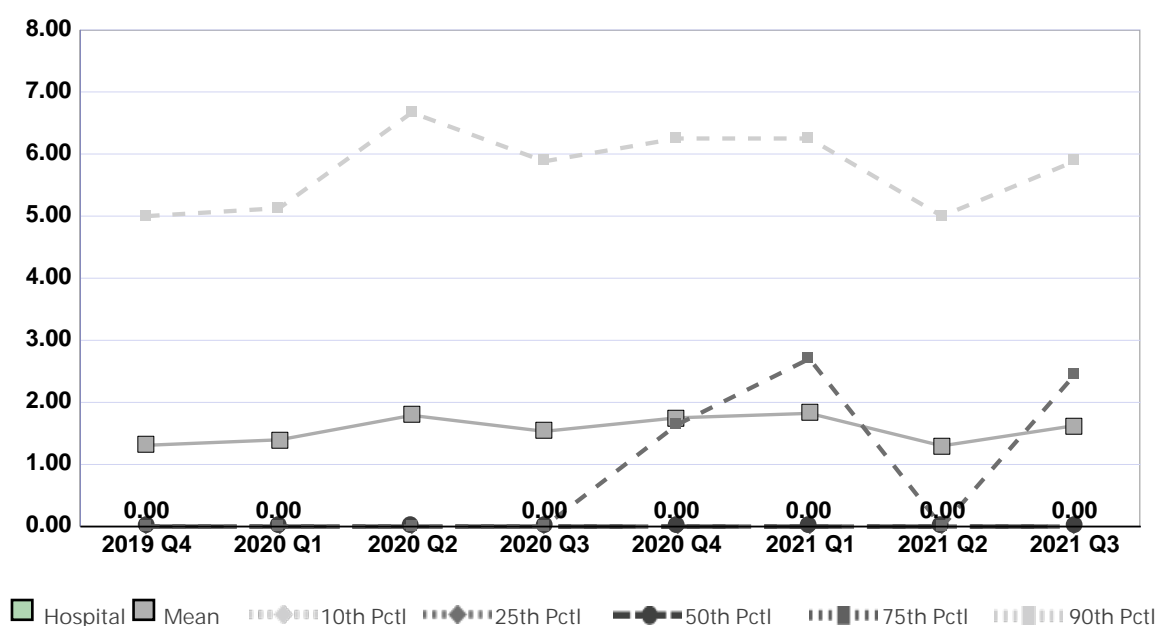
Compared by: All Hospitals

Peer Group: All Hospitals

Unit Type: Adult Medical

Unit: Medicine (5N)

Measure: Percent of Surveyed Patients with Hospital Acquired Pressure Injuries Stage 2 and Above



Quarter	2019 Q4	2020 Q1	2020 Q2	2020 Q3	2020 Q4	2021 Q1	2021 Q2	2021 Q3	Average
Unit	0.00	0.00	No Data	0.00	0.00	0.00	0.00	0.00	0.00
Mean	1.31	1.40	1.79	1.53	1.75	1.82	1.30	1.63	1.57
Standard Deviation	3.10	3.20	4.09	3.62	3.97	4.48	3.00	3.35	3.60
10th Percentile	0.00	0.00	0.00	0.00	0.00	0.00	0.00	0.00	0.00
25th Percentile	0.00	0.00	0.00	0.00	0.00	0.00	0.00	0.00	0.00
50th Percentile (Median)	0.00	0.00	0.00	0.00	0.00	0.00	0.00	0.00	0.00
75th Percentile	0.00	0.00	0.00	0.00	1.64	2.70	0.00	2.44	0.85
90th Percentile	5.00	5.13	6.67	5.88	6.25	6.25	5.00	5.88	5.76
# Units	1,997	1,819	1,297	1,832	1,671	1,837	1,957	1,764	1,772

If the number of units or hospitals is less than five, comparison data are suppressed to maintain confidentiality. If the number of units or hospitals is less than 20, comparison data may vary substantially over the time period and should be used with caution. For additional information, please refer to NDNQI reference documents.



## Phelps Memorial Hospital

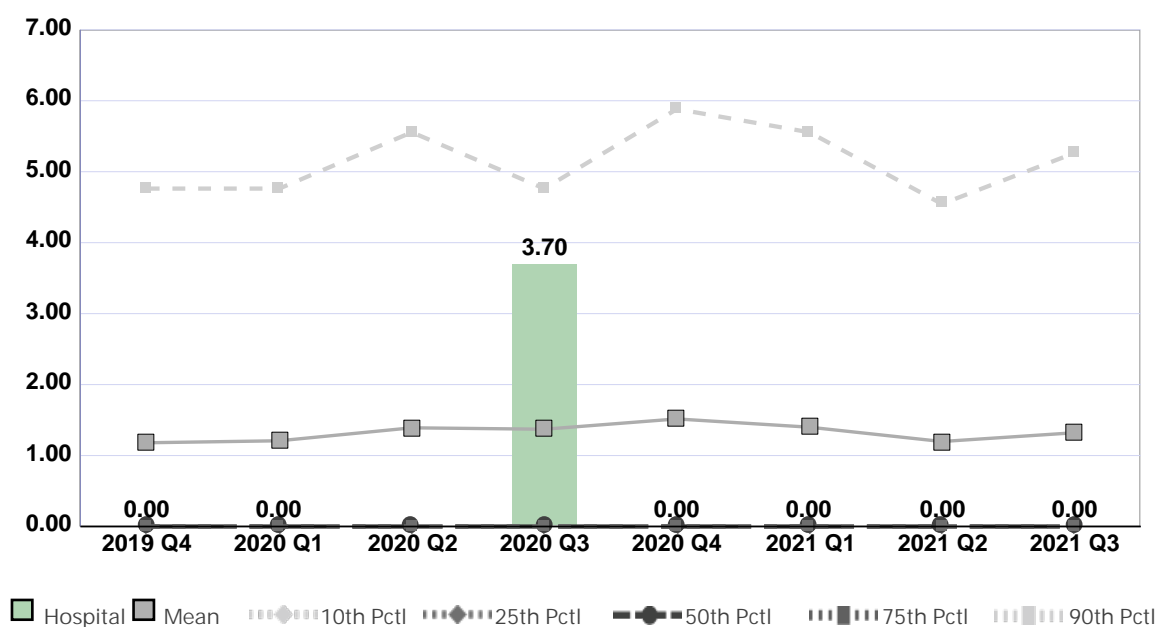
Compared by: All Hospitals

Peer Group: All Hospitals

Unit Type: Adult Medical

Unit: Medicine (5N)

Measure: Percent of Surveyed Patients with Unit Acquired Pressure Injuries



Quarter	2019 Q4	2020 Q1	2020 Q2	2020 Q3	2020 Q4	2021 Q1	2021 Q2	2021 Q3	Average
Unit	0.00	0.00	No Data	3.70	0.00	0.00	0.00	0.00	0.53
Mean	1.18	1.21	1.39	1.37	1.52	1.40	1.20	1.32	1.32
Standard Deviation	2.76	2.97	3.63	3.75	3.80	3.30	2.94	3.10	3.28
10th Percentile	0.00	0.00	0.00	0.00	0.00	0.00	0.00	0.00	0.00
25th Percentile	0.00	0.00	0.00	0.00	0.00	0.00	0.00	0.00	0.00
50th Percentile (Median)	0.00	0.00	0.00	0.00	0.00	0.00	0.00	0.00	0.00
75th Percentile	0.00	0.00	0.00	0.00	0.00	0.00	0.00	0.00	0.00
90th Percentile	4.76	4.76	5.56	4.76	5.88	5.56	4.55	5.26	5.14
# Units	1,933	1,724	1,237	1,725	1,587	1,724	1,821	1,641	1,674

If the number of units or hospitals is less than five, comparison data are suppressed to maintain confidentiality. If the number of units or hospitals is less than 20, comparison data may vary substantially over the time period and should be used with caution. For additional information, please refer to NDNQI reference documents.

## Phelps Memorial Hospital

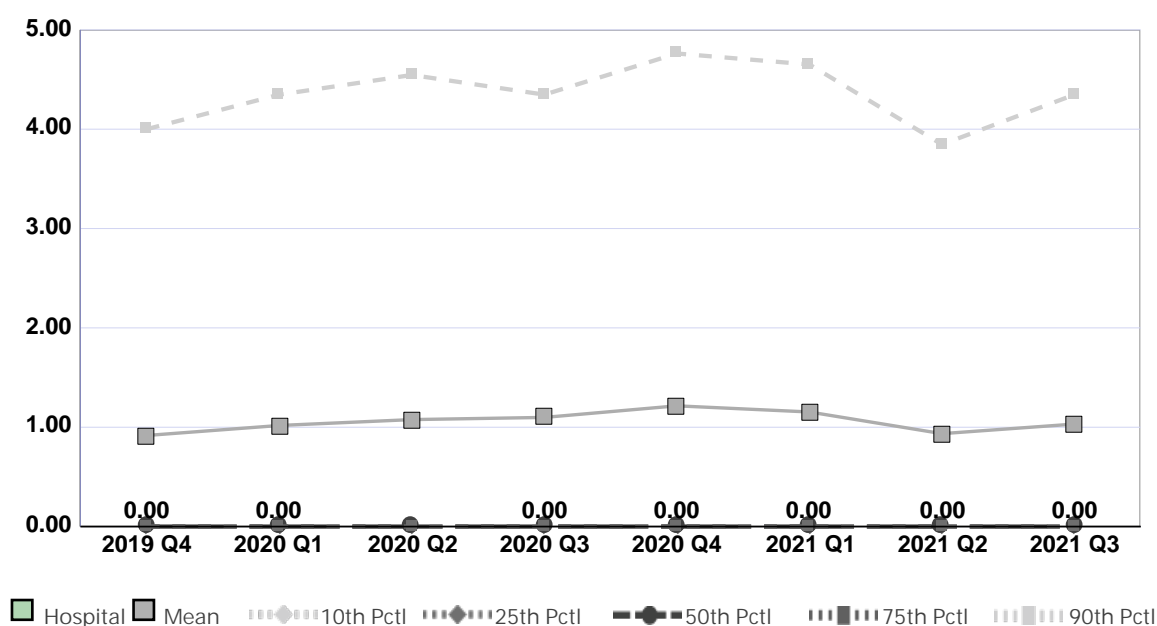
Compared by: All Hospitals

Peer Group: All Hospitals

Unit Type: Adult Medical

Unit: Medicine (5N)

Measure: Percent of Surveyed Patients with Unit Acquired Pressure Injuries Stage 2 and Above



Quarter	2019 Q4	2020 Q1	2020 Q2	2020 Q3	2020 Q4	2021 Q1	2021 Q2	2021 Q3	Average
Unit	0.00	0.00	No Data	0.00	0.00	0.00	0.00	0.00	0.00
Mean	0.92	1.02	1.08	1.10	1.22	1.15	0.94	1.03	1.06
Standard Deviation	2.36	2.64	3.02	3.13	3.32	2.88	2.56	2.53	2.81
10th Percentile	0.00	0.00	0.00	0.00	0.00	0.00	0.00	0.00	0.00
25th Percentile	0.00	0.00	0.00	0.00	0.00	0.00	0.00	0.00	0.00
50th Percentile (Median)	0.00	0.00	0.00	0.00	0.00	0.00	0.00	0.00	0.00
75th Percentile	0.00	0.00	0.00	0.00	0.00	0.00	0.00	0.00	0.00
90th Percentile	4.00	4.35	4.55	4.35	4.76	4.65	3.85	4.35	4.36
# Units	1,933	1,724	1,237	1,725	1,587	1,724	1,821	1,641	1,674

If the number of units or hospitals is less than five, comparison data are suppressed to maintain confidentiality. If the number of units or hospitals is less than 20, comparison data may vary substantially over the time period and should be used with caution. For additional information, please refer to NDNQI reference documents.

## Phelps Memorial Hospital

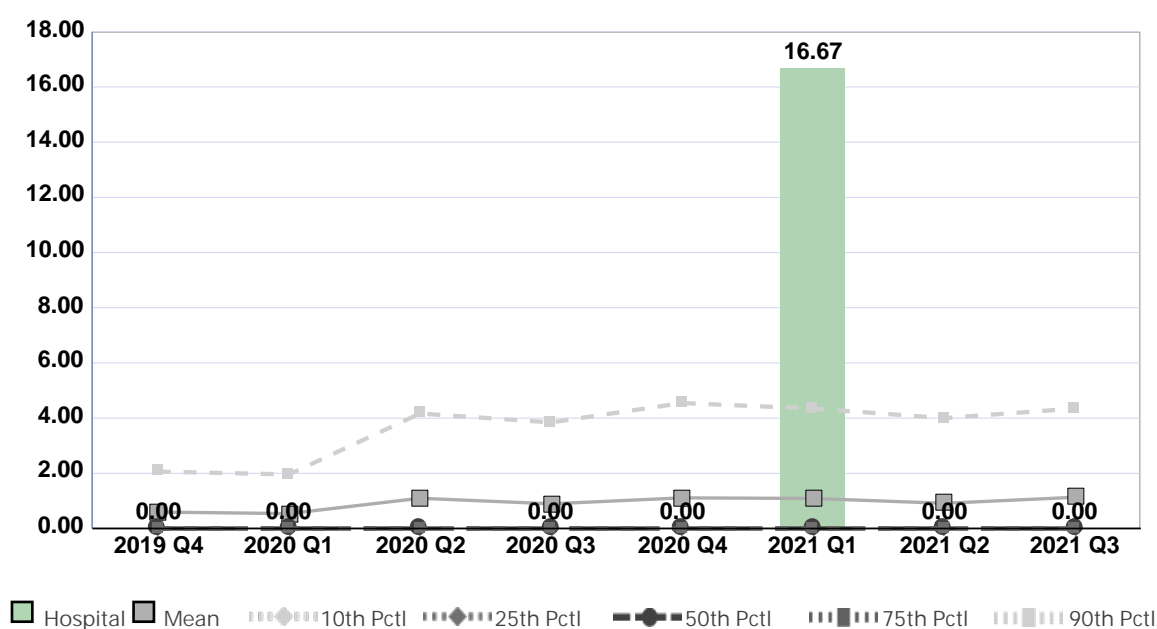
Compared by: All Hospitals

Peer Group: All Hospitals

Unit Type: Adult Medical

Unit: Medicine (5N)

Measure: Percent of Patients with Physical Restraints (Limb and/or Vest)



Quarter	2019 Q4	2020 Q1	2020 Q2	2020 Q3	2020 Q4	2021 Q1	2021 Q2	2021 Q3	Average
Unit	0.00	0.00	No Data	0.00	0.00	16.67	0.00	0.00	2.38
Mean	0.60	0.54	1.10	0.90	1.11	1.09	0.91	1.13	0.92
Standard Deviation	2.17	1.98	3.54	2.75	3.08	3.16	2.76	4.02	2.93
10th Percentile	0.00	0.00	0.00	0.00	0.00	0.00	0.00	0.00	0.00
25th Percentile	0.00	0.00	0.00	0.00	0.00	0.00	0.00	0.00	0.00
50th Percentile (Median)	0.00	0.00	0.00	0.00	0.00	0.00	0.00	0.00	0.00
75th Percentile	0.00	0.00	0.00	0.00	0.00	0.00	0.00	0.00	0.00
90th Percentile	2.06	1.96	4.17	3.85	4.55	4.35	4.00	4.35	3.66
# Units	1,704	1,517	1,123	1,527	1,437	1,536	1,612	1,447	1,488

If the number of units or hospitals is less than five, comparison data are suppressed to maintain confidentiality. If the number of units or hospitals is less than 20, comparison data may vary substantially over the time period and should be used with caution. For additional information, please refer to NDNQI reference documents.

## Phelps Memorial Hospital

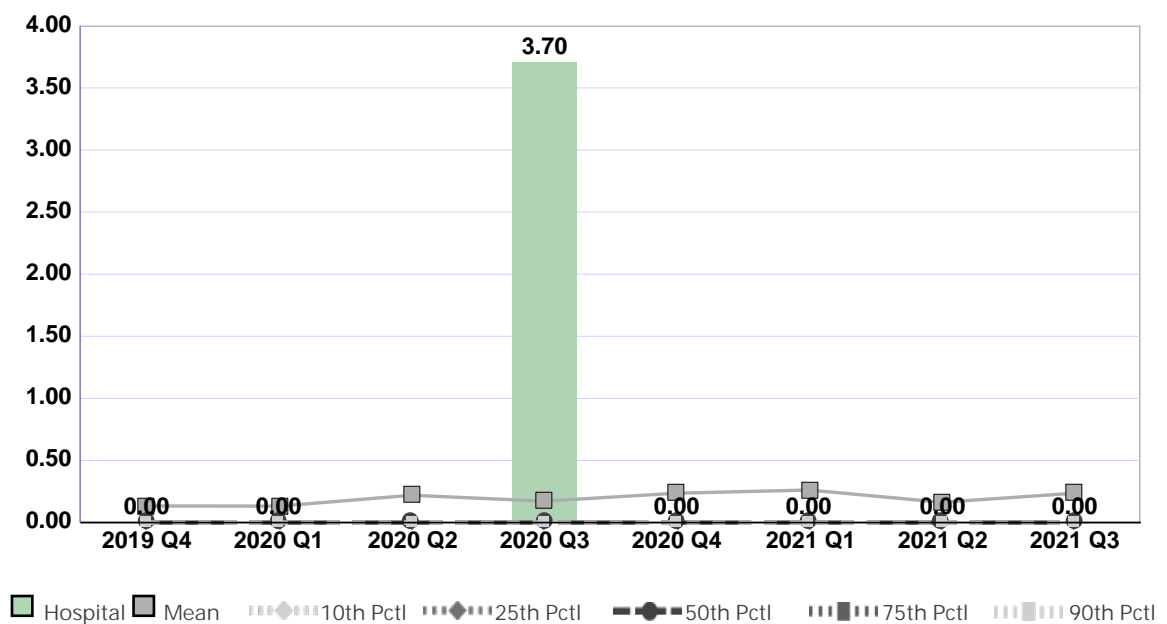
Compared by: All Hospitals

Peer Group: All Hospitals

Unit Type: Adult Medical

Unit: Medicine (5N)

Measure: Percent of Surveyed Patients with Hospital Acquired Medical Device Related Pressure Injury



Quarter	2019 Q4	2020 Q1	2020 Q2	2020 Q3	2020 Q4	2021 Q1	2021 Q2	2021 Q3	Average
Unit	0.00	0.00	No Data	3.70	0.00	0.00	0.00	0.00	0.53
Mean	0.13	0.13	0.22	0.17	0.24	0.26	0.16	0.24	0.19
Standard Deviation	0.78	0.87	1.42	1.08	1.26	1.36	1.13	1.13	1.13
10th Percentile	0.00	0.00	0.00	0.00	0.00	0.00	0.00	0.00	0.00
25th Percentile	0.00	0.00	0.00	0.00	0.00	0.00	0.00	0.00	0.00
50th Percentile (Median)	0.00	0.00	0.00	0.00	0.00	0.00	0.00	0.00	0.00
75th Percentile	0.00	0.00	0.00	0.00	0.00	0.00	0.00	0.00	0.00
90th Percentile	0.00	0.00	0.00	0.00	0.00	0.00	0.00	0.00	0.00
# Units	1,997	1,819	1,297	1,832	1,671	1,837	1,957	1,764	1,772

If the number of units or hospitals is less than five, comparison data are suppressed to maintain confidentiality. If the number of units or hospitals is less than 20, comparison data may vary substantially over the time period and should be used with caution. For additional information, please refer to NDNQI reference documents.

## Phelps Memorial Hospital

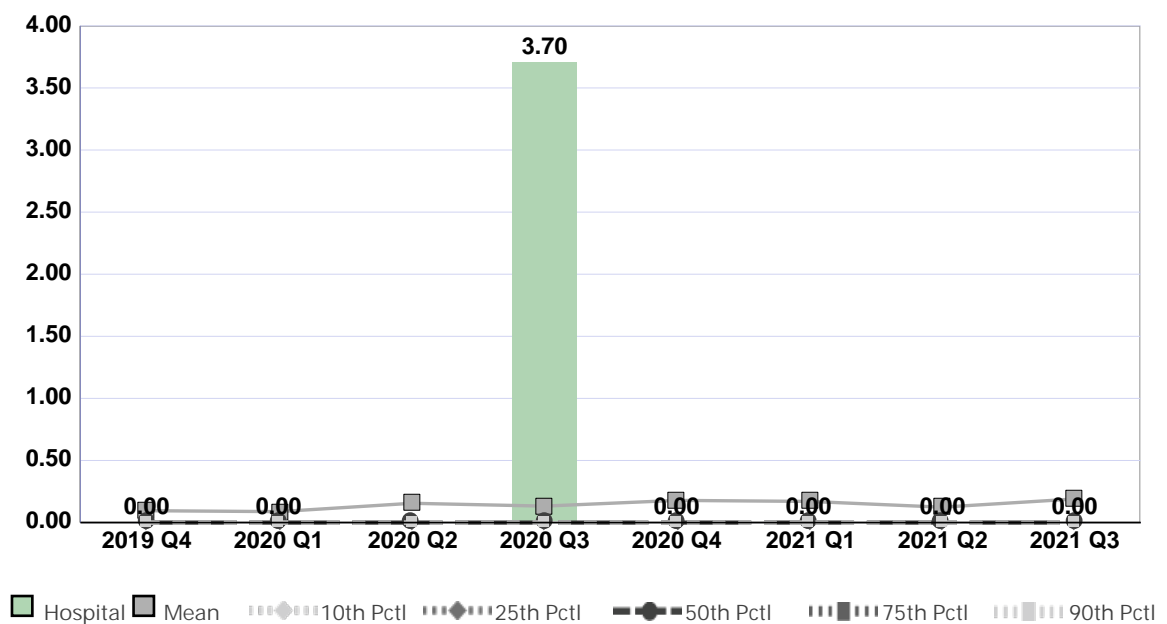
Compared by: All Hospitals

Peer Group: All Hospitals

Unit Type: Adult Medical

Unit: Medicine (5N)

Measure: Percent of Surveyed Patients with Unit Acquired Medical Device Related Pressure Injury



Quarter	2019 Q4	2020 Q1	2020 Q2	2020 Q3	2020 Q4	2021 Q1	2021 Q2	2021 Q3	Average
Unit	0.00	0.00	No Data	3.70	0.00	0.00	0.00	0.00	0.53
Mean	0.10	0.09	0.16	0.13	0.18	0.17	0.12	0.19	0.14
Standard Deviation	0.67	0.68	1.27	0.94	1.07	1.03	0.96	1.04	0.96
10th Percentile	0.00	0.00	0.00	0.00	0.00	0.00	0.00	0.00	0.00
25th Percentile	0.00	0.00	0.00	0.00	0.00	0.00	0.00	0.00	0.00
50th Percentile (Median)	0.00	0.00	0.00	0.00	0.00	0.00	0.00	0.00	0.00
75th Percentile	0.00	0.00	0.00	0.00	0.00	0.00	0.00	0.00	0.00
90th Percentile	0.00	0.00	0.00	0.00	0.00	0.00	0.00	0.00	0.00
# Units	1,933	1,724	1,237	1,725	1,587	1,724	1,821	1,641	1,674

If the number of units or hospitals is less than five, comparison data are suppressed to maintain confidentiality. If the number of units or hospitals is less than 20, comparison data may vary substantially over the time period and should be used with caution. For additional information, please refer to NDNQI reference documents.

## Phelps Memorial Hospital

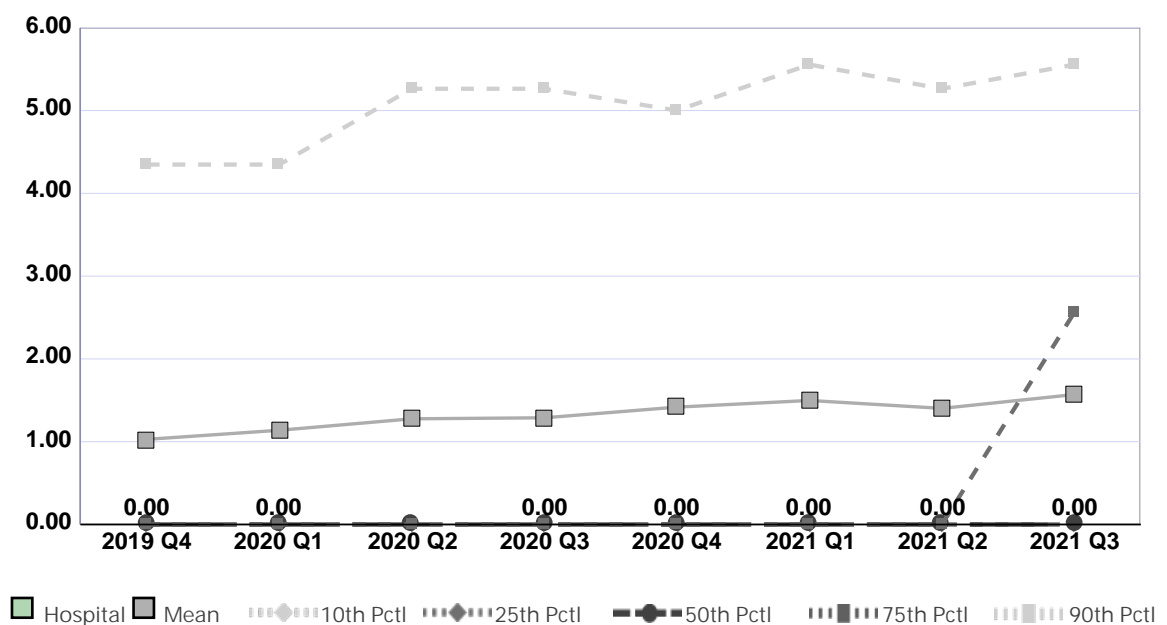
Compared by: All Hospitals

Peer Group: All Hospitals

Unit Type: Adult Surgical

Unit: Ortho (2C)

Measure: Percent of Surveyed Patients with Hospital Acquired Pressure Injuries



Quarter	2019 Q4	2020 Q1	2020 Q2	2020 Q3	2020 Q4	2021 Q1	2021 Q2	2021 Q3	Average
Unit	0.00	0.00	No Data	0.00	0.00	0.00	0.00	0.00	0.00
Mean	1.03	1.14	1.28	1.29	1.42	1.50	1.40	1.57	1.33
Standard Deviation	2.54	3.24	3.02	3.02	3.56	3.62	3.58	3.41	3.25
10th Percentile	0.00	0.00	0.00	0.00	0.00	0.00	0.00	0.00	0.00
25th Percentile	0.00	0.00	0.00	0.00	0.00	0.00	0.00	0.00	0.00
50th Percentile (Median)	0.00	0.00	0.00	0.00	0.00	0.00	0.00	0.00	0.00
75th Percentile	0.00	0.00	0.00	0.00	0.00	0.00	0.00	2.56	0.32
90th Percentile	4.35	4.35	5.26	5.26	5.00	5.56	5.26	5.56	5.07
# Units	1,295	1,181	778	1,142	1,047	1,167	1,222	1,097	1,116

If the number of units or hospitals is less than five, comparison data are suppressed to maintain confidentiality. If the number of units or hospitals is less than 20, comparison data may vary substantially over the time period and should be used with caution. For additional information, please refer to NDNQI reference documents.

## Phelps Memorial Hospital

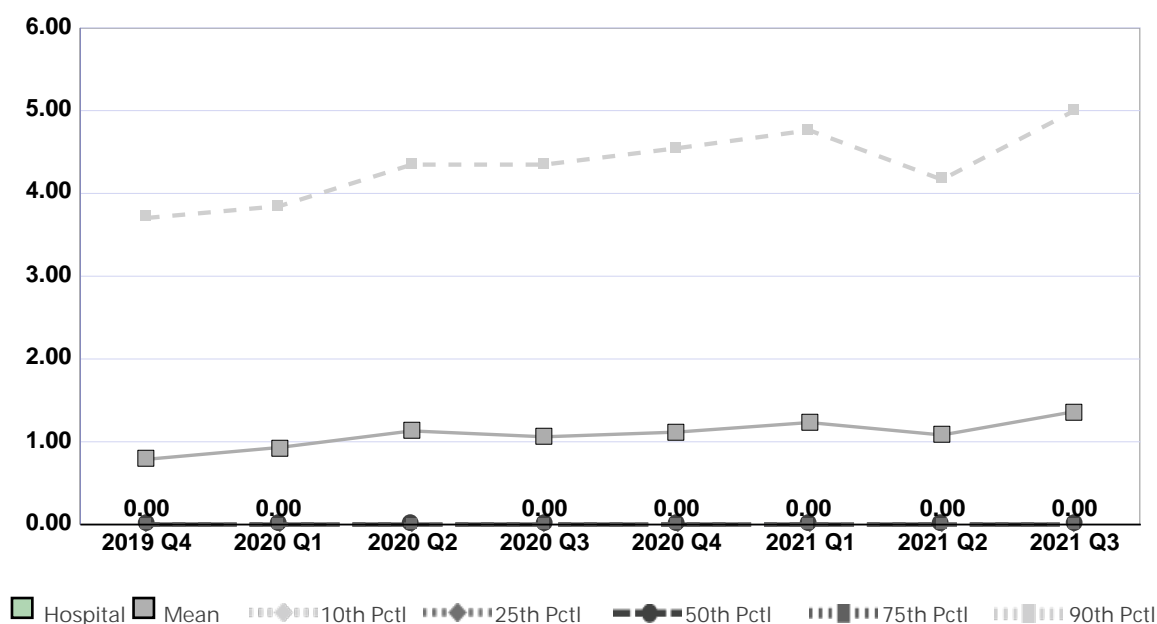
Compared by: All Hospitals

Peer Group: All Hospitals

Unit Type: Adult Surgical

Unit: Ortho (2C)

Measure: Percent of Surveyed Patients with Hospital Acquired Pressure Injuries Stage 2 and Above



Quarter	2019 Q4	2020 Q1	2020 Q2	2020 Q3	2020 Q4	2021 Q1	2021 Q2	2021 Q3	Average
Unit	0.00	0.00	No Data	0.00	0.00	0.00	0.00	0.00	0.00
Mean	0.79	0.93	1.13	1.06	1.12	1.23	1.08	1.36	1.09
Standard Deviation	2.13	2.86	2.83	2.63	3.02	3.00	3.06	3.09	2.83
10th Percentile	0.00	0.00	0.00	0.00	0.00	0.00	0.00	0.00	0.00
25th Percentile	0.00	0.00	0.00	0.00	0.00	0.00	0.00	0.00	0.00
50th Percentile (Median)	0.00	0.00	0.00	0.00	0.00	0.00	0.00	0.00	0.00
75th Percentile	0.00	0.00	0.00	0.00	0.00	0.00	0.00	0.00	0.00
90th Percentile	3.70	3.85	4.35	4.35	4.55	4.76	4.17	5.00	4.34
# Units	1,295	1,181	778	1,142	1,047	1,167	1,222	1,097	1,116

If the number of units or hospitals is less than five, comparison data are suppressed to maintain confidentiality. If the number of units or hospitals is less than 20, comparison data may vary substantially over the time period and should be used with caution. For additional information, please refer to NDNQI reference documents.

## Phelps Memorial Hospital

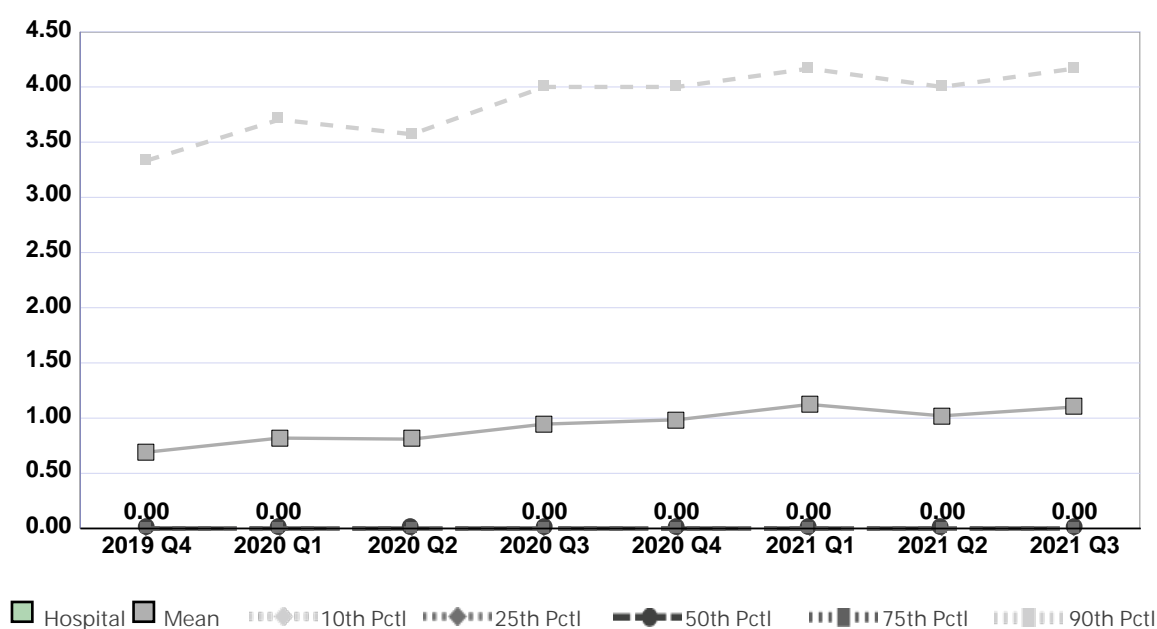
Compared by: All Hospitals

Peer Group: All Hospitals

Unit Type: Adult Surgical

Unit: Ortho (2C)

Measure: Percent of Surveyed Patients with Unit Acquired Pressure Injuries



Quarter	2019 Q4	2020 Q1	2020 Q2	2020 Q3	2020 Q4	2021 Q1	2021 Q2	2021 Q3	Average
Unit	0.00	0.00	No Data	0.00	0.00	0.00	0.00	0.00	0.00
Mean	0.69	0.82	0.81	0.95	0.98	1.12	1.02	1.10	0.94
Standard Deviation	2.07	2.56	2.51	2.52	3.04	3.27	3.03	2.71	2.71
10th Percentile	0.00	0.00	0.00	0.00	0.00	0.00	0.00	0.00	0.00
25th Percentile	0.00	0.00	0.00	0.00	0.00	0.00	0.00	0.00	0.00
50th Percentile (Median)	0.00	0.00	0.00	0.00	0.00	0.00	0.00	0.00	0.00
75th Percentile	0.00	0.00	0.00	0.00	0.00	0.00	0.00	0.00	0.00
90th Percentile	3.33	3.70	3.57	4.00	4.00	4.17	4.00	4.17	3.87
# Units	1,250	1,119	741	1,063	992	1,076	1,125	1,009	1,047

If the number of units or hospitals is less than five, comparison data are suppressed to maintain confidentiality. If the number of units or hospitals is less than 20, comparison data may vary substantially over the time period and should be used with caution. For additional information, please refer to NDNQI reference documents.



## Phelps Memorial Hospital

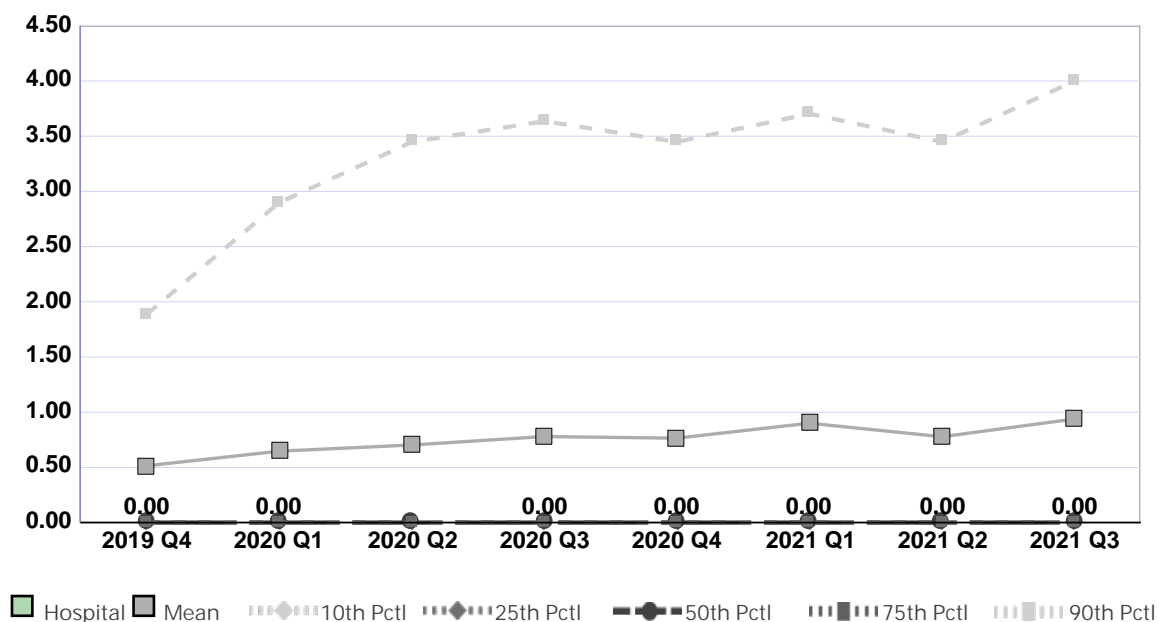
Compared by: All Hospitals

Peer Group: All Hospitals

Unit Type: Adult Surgical

Unit: Ortho (2C)

Measure: Percent of Surveyed Patients with Unit Acquired Pressure Injuries Stage 2 and Above



Quarter	2019 Q4	2020 Q1	2020 Q2	2020 Q3	2020 Q4	2021 Q1	2021 Q2	2021 Q3	Average
Unit	0.00	0.00	No Data	0.00	0.00	0.00	0.00	0.00	0.00
Mean	0.51	0.65	0.70	0.78	0.76	0.90	0.78	0.94	0.75
Standard Deviation	1.73	2.17	2.36	2.23	2.71	2.69	2.61	2.44	2.37
10th Percentile	0.00	0.00	0.00	0.00	0.00	0.00	0.00	0.00	0.00
25th Percentile	0.00	0.00	0.00	0.00	0.00	0.00	0.00	0.00	0.00
50th Percentile (Median)	0.00	0.00	0.00	0.00	0.00	0.00	0.00	0.00	0.00
75th Percentile	0.00	0.00	0.00	0.00	0.00	0.00	0.00	0.00	0.00
90th Percentile	1.89	2.90	3.45	3.64	3.45	3.70	3.45	4.00	3.31
# Units	1,250	1,119	741	1,063	992	1,076	1,125	1,009	1,047

If the number of units or hospitals is less than five, comparison data are suppressed to maintain confidentiality. If the number of units or hospitals is less than 20, comparison data may vary substantially over the time period and should be used with caution. For additional information, please refer to NDNQI reference documents.

## Phelps Memorial Hospital

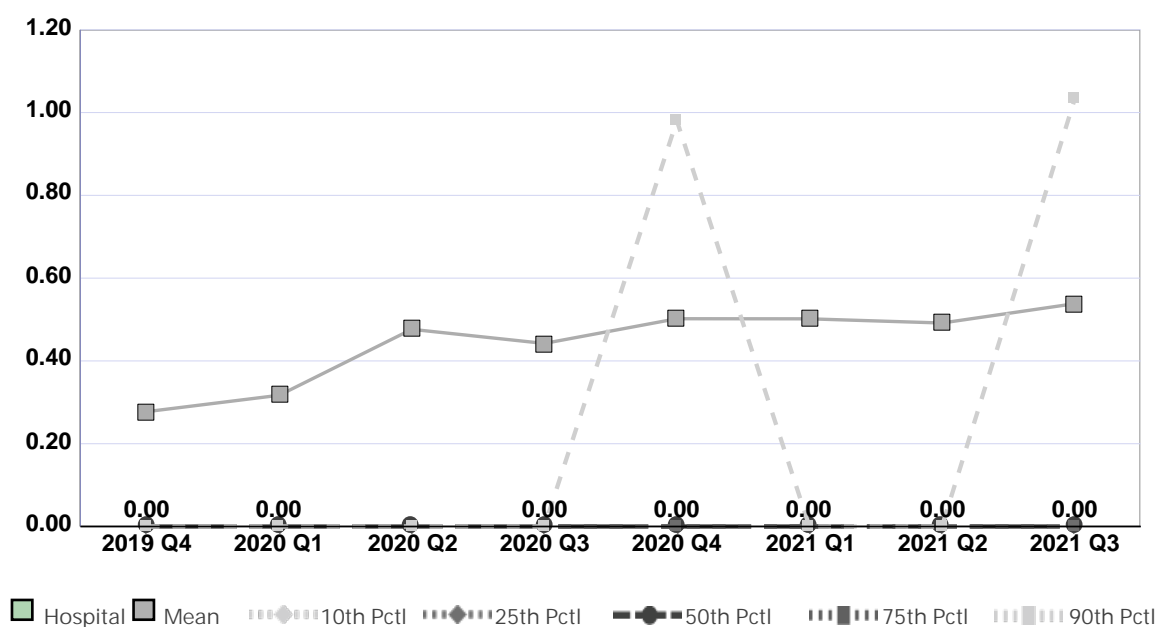
Compared by: All Hospitals

Peer Group: All Hospitals

Unit Type: Adult Surgical

Unit: Ortho (2C)

Measure: Percent of Patients with Physical Restraints (Limb and/or Vest)



Quarter	2019 Q4	2020 Q1	2020 Q2	2020 Q3	2020 Q4	2021 Q1	2021 Q2	2021 Q3	Average
Unit	0.00	0.00	No Data	0.00	0.00	0.00	0.00	0.00	0.00
Mean	0.28	0.32	0.48	0.44	0.50	0.50	0.49	0.54	0.44
Standard Deviation	1.18	1.33	1.76	2.53	1.82	1.94	2.33	2.16	1.88
10th Percentile	0.00	0.00	0.00	0.00	0.00	0.00	0.00	0.00	0.00
25th Percentile	0.00	0.00	0.00	0.00	0.00	0.00	0.00	0.00	0.00
50th Percentile (Median)	0.00	0.00	0.00	0.00	0.00	0.00	0.00	0.00	0.00
75th Percentile	0.00	0.00	0.00	0.00	0.00	0.00	0.00	0.00	0.00
90th Percentile	0.00	0.00	0.00	0.00	0.98	0.00	0.00	1.03	0.25
# Units	1,096	985	671	935	878	954	992	898	926

If the number of units or hospitals is less than five, comparison data are suppressed to maintain confidentiality. If the number of units or hospitals is less than 20, comparison data may vary substantially over the time period and should be used with caution. For additional information, please refer to NDNQI reference documents.

## Phelps Memorial Hospital

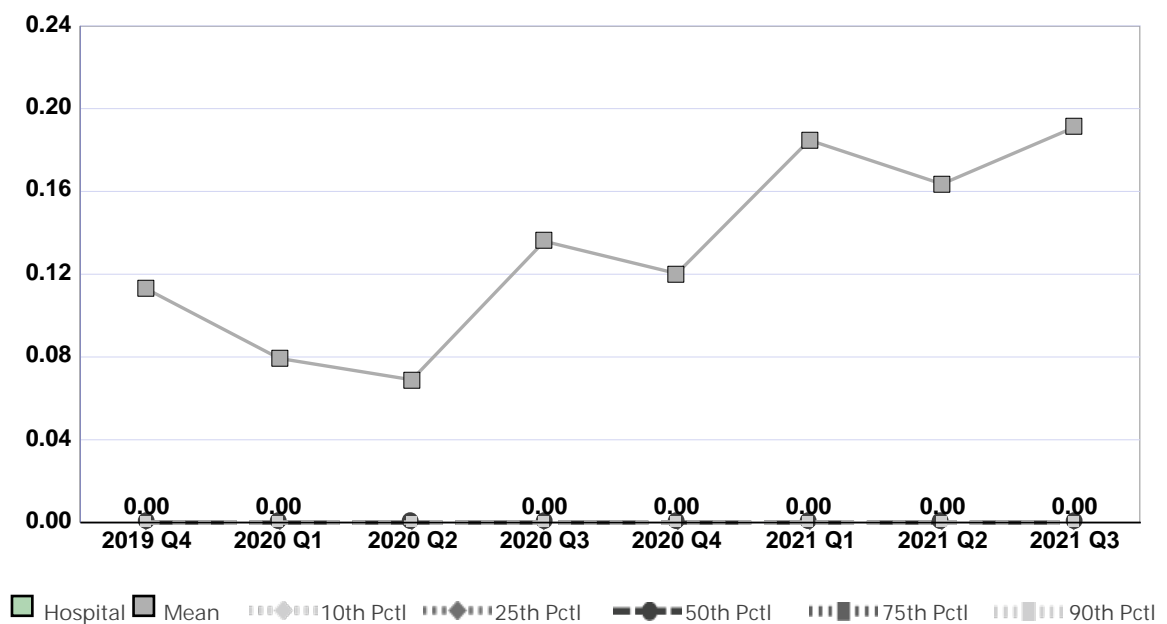
Compared by: All Hospitals

Peer Group: All Hospitals

Unit Type: Adult Surgical

Unit: Ortho (2C)

Measure: Percent of Surveyed Patients with Hospital Acquired Medical Device Related Pressure Injury



Quarter	2019 Q4	2020 Q1	2020 Q2	2020 Q3	2020 Q4	2021 Q1	2021 Q2	2021 Q3	Average
Unit	0.00	0.00	No Data	0.00	0.00	0.00	0.00	0.00	0.00
Mean	0.11	0.08	0.07	0.14	0.12	0.18	0.16	0.19	0.13
Standard Deviation	0.70	0.62	0.57	0.89	0.90	1.38	0.99	1.12	0.90
10th Percentile	0.00	0.00	0.00	0.00	0.00	0.00	0.00	0.00	0.00
25th Percentile	0.00	0.00	0.00	0.00	0.00	0.00	0.00	0.00	0.00
50th Percentile (Median)	0.00	0.00	0.00	0.00	0.00	0.00	0.00	0.00	0.00
75th Percentile	0.00	0.00	0.00	0.00	0.00	0.00	0.00	0.00	0.00
90th Percentile	0.00	0.00	0.00	0.00	0.00	0.00	0.00	0.00	0.00
# Units	1,295	1,181	778	1,142	1,047	1,167	1,222	1,097	1,116

If the number of units or hospitals is less than five, comparison data are suppressed to maintain confidentiality. If the number of units or hospitals is less than 20, comparison data may vary substantially over the time period and should be used with caution. For additional information, please refer to NDNQI reference documents.

## Phelps Memorial Hospital

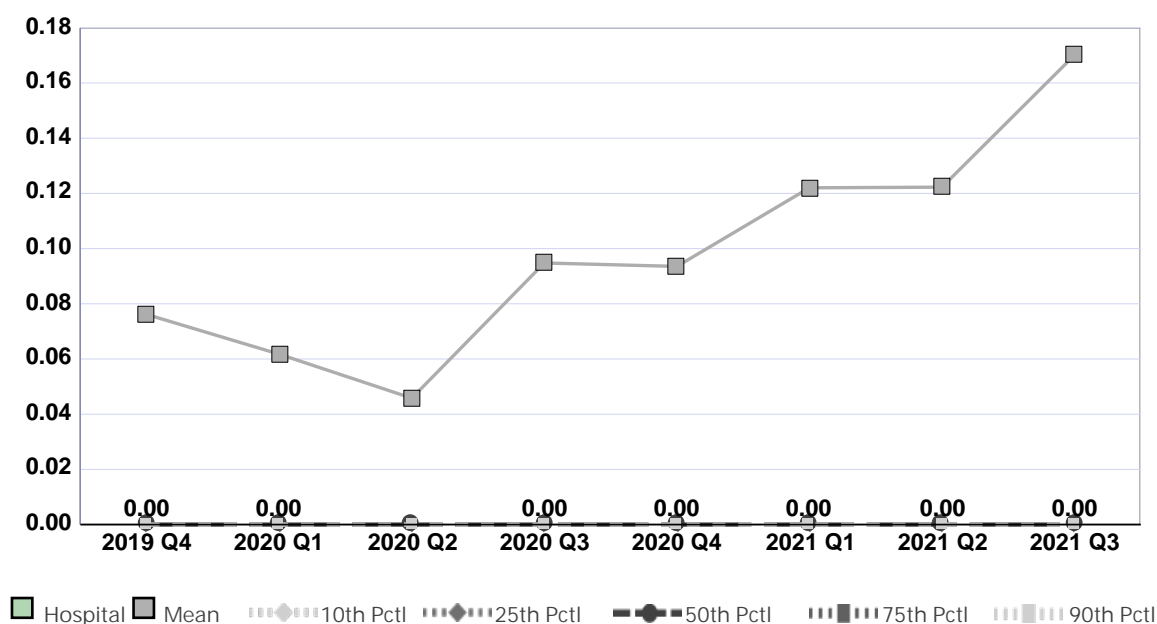
Compared by: All Hospitals

Peer Group: All Hospitals

Unit Type: Adult Surgical

Unit: Ortho (2C)

Measure: Percent of Surveyed Patients with Unit Acquired Medical Device Related Pressure Injury



Quarter	2019 Q4	2020 Q1	2020 Q2	2020 Q3	2020 Q4	2021 Q1	2021 Q2	2021 Q3	Average
Unit	0.00	0.00	No Data	0.00	0.00	0.00	0.00	0.00	0.00
Mean	0.08	0.06	0.05	0.09	0.09	0.12	0.12	0.17	0.10
Standard Deviation	0.59	0.56	0.47	0.74	0.80	1.25	0.83	1.10	0.79
10th Percentile	0.00	0.00	0.00	0.00	0.00	0.00	0.00	0.00	0.00
25th Percentile	0.00	0.00	0.00	0.00	0.00	0.00	0.00	0.00	0.00
50th Percentile (Median)	0.00	0.00	0.00	0.00	0.00	0.00	0.00	0.00	0.00
75th Percentile	0.00	0.00	0.00	0.00	0.00	0.00	0.00	0.00	0.00
90th Percentile	0.00	0.00	0.00	0.00	0.00	0.00	0.00	0.00	0.00
# Units	1,250	1,119	741	1,063	992	1,076	1,125	1,009	1,047

If the number of units or hospitals is less than five, comparison data are suppressed to maintain confidentiality. If the number of units or hospitals is less than 20, comparison data may vary substantially over the time period and should be used with caution. For additional information, please refer to NDNQI reference documents.

## Phelps Memorial Hospital

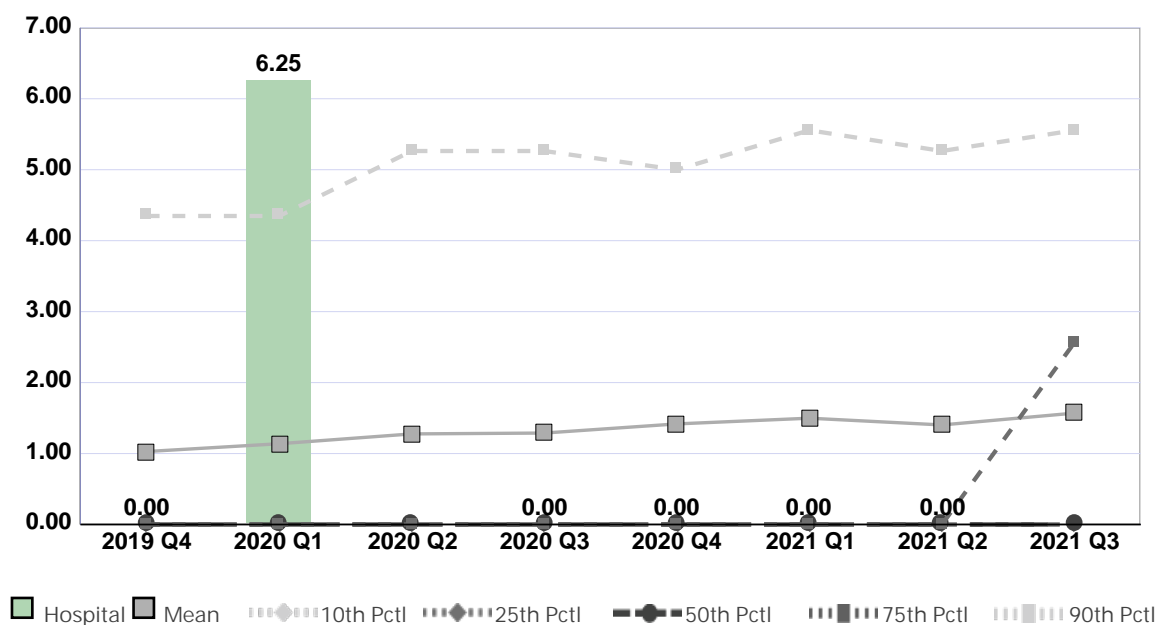
Compared by: All Hospitals

Peer Group: All Hospitals

Unit Type: Adult Surgical

Unit: Surgery -3 North

Measure: Percent of Surveyed Patients with Hospital Acquired Pressure Injuries



Quarter	2019 Q4	2020 Q1	2020 Q2	2020 Q3	2020 Q4	2021 Q1	2021 Q2	2021 Q3	Average
Unit	0.00	6.25	No Data	0.00	0.00	0.00	0.00	No Data	1.04
Mean	1.03	1.14	1.28	1.29	1.42	1.50	1.40	1.57	1.33
Standard Deviation	2.54	3.24	3.02	3.02	3.56	3.62	3.58	3.41	3.25
10th Percentile	0.00	0.00	0.00	0.00	0.00	0.00	0.00	0.00	0.00
25th Percentile	0.00	0.00	0.00	0.00	0.00	0.00	0.00	0.00	0.00
50th Percentile (Median)	0.00	0.00	0.00	0.00	0.00	0.00	0.00	0.00	0.00
75th Percentile	0.00	0.00	0.00	0.00	0.00	0.00	0.00	2.56	0.32
90th Percentile	4.35	4.35	5.26	5.26	5.00	5.56	5.26	5.56	5.07
# Units	1,295	1,181	778	1,142	1,047	1,167	1,222	1,097	1,116

If the number of units or hospitals is less than five, comparison data are suppressed to maintain confidentiality. If the number of units or hospitals is less than 20, comparison data may vary substantially over the time period and should be used with caution. For additional information, please refer to NDNQI reference documents.

## Phelps Memorial Hospital

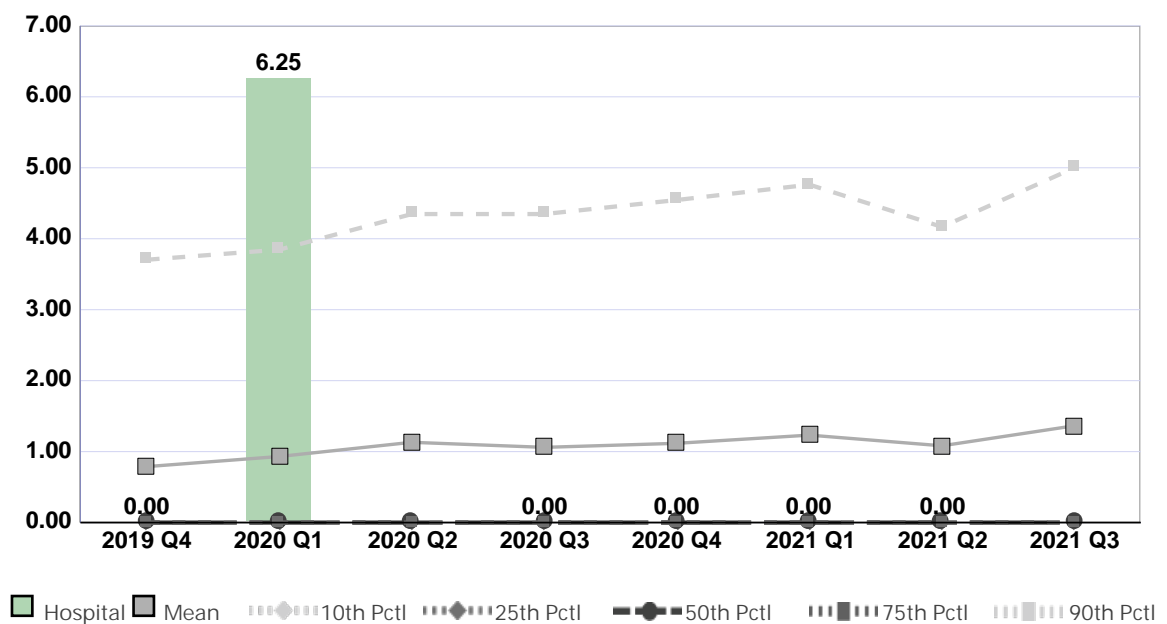
Compared by: All Hospitals

Peer Group: All Hospitals

Unit Type: Adult Surgical

Unit: Surgery -3 North

Measure: Percent of Surveyed Patients with Hospital Acquired Pressure Injuries Stage 2 and Above



Quarter	2019 Q4	2020 Q1	2020 Q2	2020 Q3	2020 Q4	2021 Q1	2021 Q2	2021 Q3	Average
Unit	0.00	6.25	No Data	0.00	0.00	0.00	0.00	No Data	1.04
Mean	0.79	0.93	1.13	1.06	1.12	1.23	1.08	1.36	1.09
Standard Deviation	2.13	2.86	2.83	2.63	3.02	3.00	3.06	3.09	2.83
10th Percentile	0.00	0.00	0.00	0.00	0.00	0.00	0.00	0.00	0.00
25th Percentile	0.00	0.00	0.00	0.00	0.00	0.00	0.00	0.00	0.00
50th Percentile (Median)	0.00	0.00	0.00	0.00	0.00	0.00	0.00	0.00	0.00
75th Percentile	0.00	0.00	0.00	0.00	0.00	0.00	0.00	0.00	0.00
90th Percentile	3.70	3.85	4.35	4.35	4.55	4.76	4.17	5.00	4.34
# Units	1,295	1,181	778	1,142	1,047	1,167	1,222	1,097	1,116

If the number of units or hospitals is less than five, comparison data are suppressed to maintain confidentiality. If the number of units or hospitals is less than 20, comparison data may vary substantially over the time period and should be used with caution. For additional information, please refer to NDNQI reference documents.

## Phelps Memorial Hospital

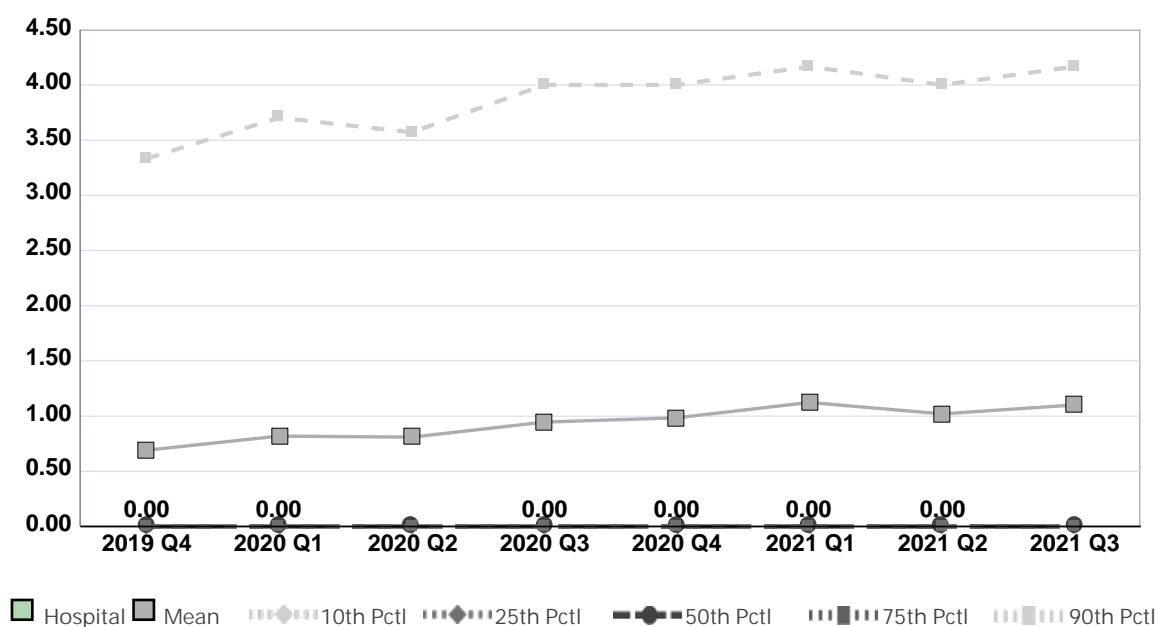
Compared by: All Hospitals

Peer Group: All Hospitals

Unit Type: Adult Surgical

Unit: Surgery -3 North

Measure: Percent of Surveyed Patients with Unit Acquired Pressure Injuries



Quarter	2019 Q4	2020 Q1	2020 Q2	2020 Q3	2020 Q4	2021 Q1	2021 Q2	2021 Q3	Average
Unit	0.00	0.00	No Data	0.00	0.00	0.00	0.00	No Data	0.00
Mean	0.69	0.82	0.81	0.95	0.98	1.12	1.02	1.10	0.94
Standard Deviation	2.07	2.56	2.51	2.52	3.04	3.27	3.03	2.71	2.71
10th Percentile	0.00	0.00	0.00	0.00	0.00	0.00	0.00	0.00	0.00
25th Percentile	0.00	0.00	0.00	0.00	0.00	0.00	0.00	0.00	0.00
50th Percentile (Median)	0.00	0.00	0.00	0.00	0.00	0.00	0.00	0.00	0.00
75th Percentile	0.00	0.00	0.00	0.00	0.00	0.00	0.00	0.00	0.00
90th Percentile	3.33	3.70	3.57	4.00	4.00	4.17	4.00	4.17	3.87
# Units	1,250	1,119	741	1,063	992	1,076	1,125	1,009	1,047

If the number of units or hospitals is less than five, comparison data are suppressed to maintain confidentiality. If the number of units or hospitals is less than 20, comparison data may vary substantially over the time period and should be used with caution. For additional information, please refer to NDNQI reference documents.

## Phelps Memorial Hospital

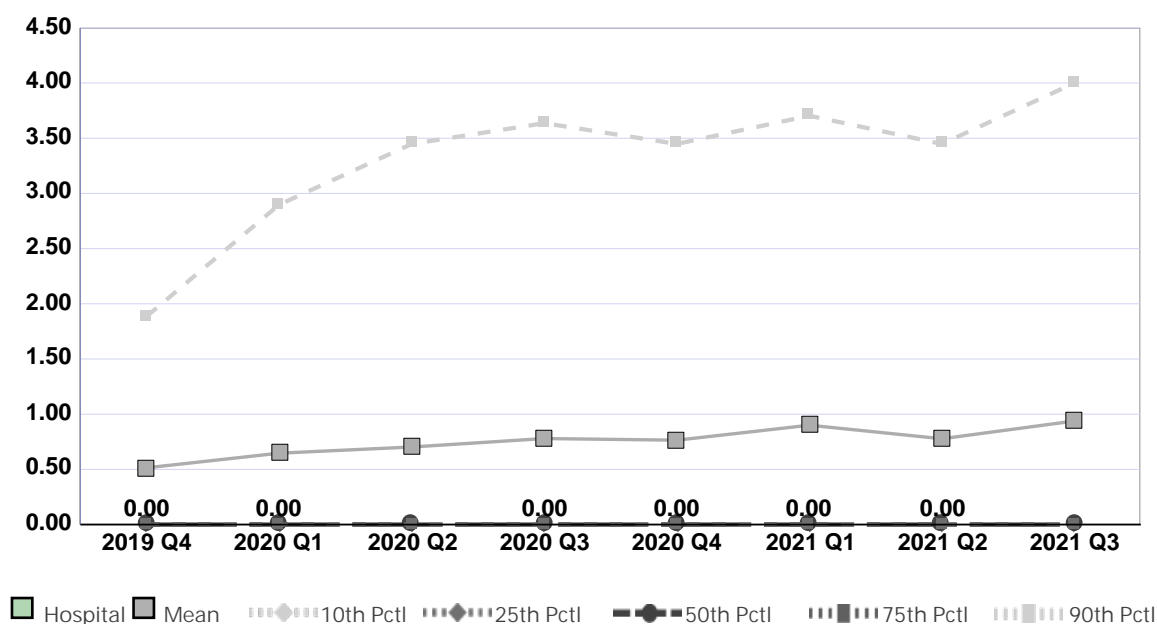
Compared by: All Hospitals

Peer Group: All Hospitals

Unit Type: Adult Surgical

Unit: Surgery -3 North

Measure: Percent of Surveyed Patients with Unit Acquired Pressure Injuries Stage 2 and Above



Quarter	2019 Q4	2020 Q1	2020 Q2	2020 Q3	2020 Q4	2021 Q1	2021 Q2	2021 Q3	Average
Unit	0.00	0.00	No Data	0.00	0.00	0.00	0.00	No Data	0.00
Mean	0.51	0.65	0.70	0.78	0.76	0.90	0.78	0.94	0.75
Standard Deviation	1.73	2.17	2.36	2.23	2.71	2.69	2.61	2.44	2.37
10th Percentile	0.00	0.00	0.00	0.00	0.00	0.00	0.00	0.00	0.00
25th Percentile	0.00	0.00	0.00	0.00	0.00	0.00	0.00	0.00	0.00
50th Percentile (Median)	0.00	0.00	0.00	0.00	0.00	0.00	0.00	0.00	0.00
75th Percentile	0.00	0.00	0.00	0.00	0.00	0.00	0.00	0.00	0.00
90th Percentile	1.89	2.90	3.45	3.64	3.45	3.70	3.45	4.00	3.31
# Units	1,250	1,119	741	1,063	992	1,076	1,125	1,009	1,047

If the number of units or hospitals is less than five, comparison data are suppressed to maintain confidentiality. If the number of units or hospitals is less than 20, comparison data may vary substantially over the time period and should be used with caution. For additional information, please refer to NDNQI reference documents.



## Phelps Memorial Hospital

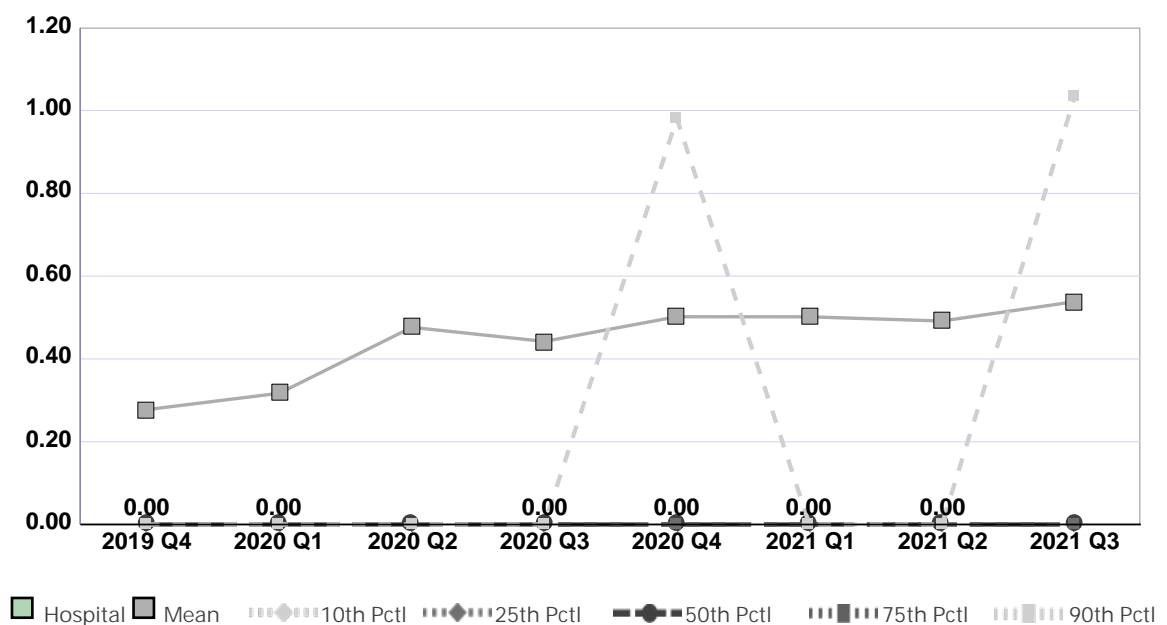
Compared by: All Hospitals

Peer Group: All Hospitals

Unit Type: Adult Surgical

Unit: Surgery -3 North

Measure: Percent of Patients with Physical Restraints (Limb and/or Vest)



Quarter	2019 Q4	2020 Q1	2020 Q2	2020 Q3	2020 Q4	2021 Q1	2021 Q2	2021 Q3	Average
Unit	0.00	0.00	No Data	0.00	0.00	0.00	0.00	No Data	0.00
Mean	0.28	0.32	0.48	0.44	0.50	0.50	0.49	0.54	0.44
Standard Deviation	1.18	1.33	1.76	2.53	1.82	1.94	2.33	2.16	1.88
10th Percentile	0.00	0.00	0.00	0.00	0.00	0.00	0.00	0.00	0.00
25th Percentile	0.00	0.00	0.00	0.00	0.00	0.00	0.00	0.00	0.00
50th Percentile (Median)	0.00	0.00	0.00	0.00	0.00	0.00	0.00	0.00	0.00
75th Percentile	0.00	0.00	0.00	0.00	0.00	0.00	0.00	0.00	0.00
90th Percentile	0.00	0.00	0.00	0.00	0.98	0.00	0.00	1.03	0.25
# Units	1,096	985	671	935	878	954	992	898	926

If the number of units or hospitals is less than five, comparison data are suppressed to maintain confidentiality. If the number of units or hospitals is less than 20, comparison data may vary substantially over the time period and should be used with caution. For additional information, please refer to NDNQI reference documents.

## Phelps Memorial Hospital

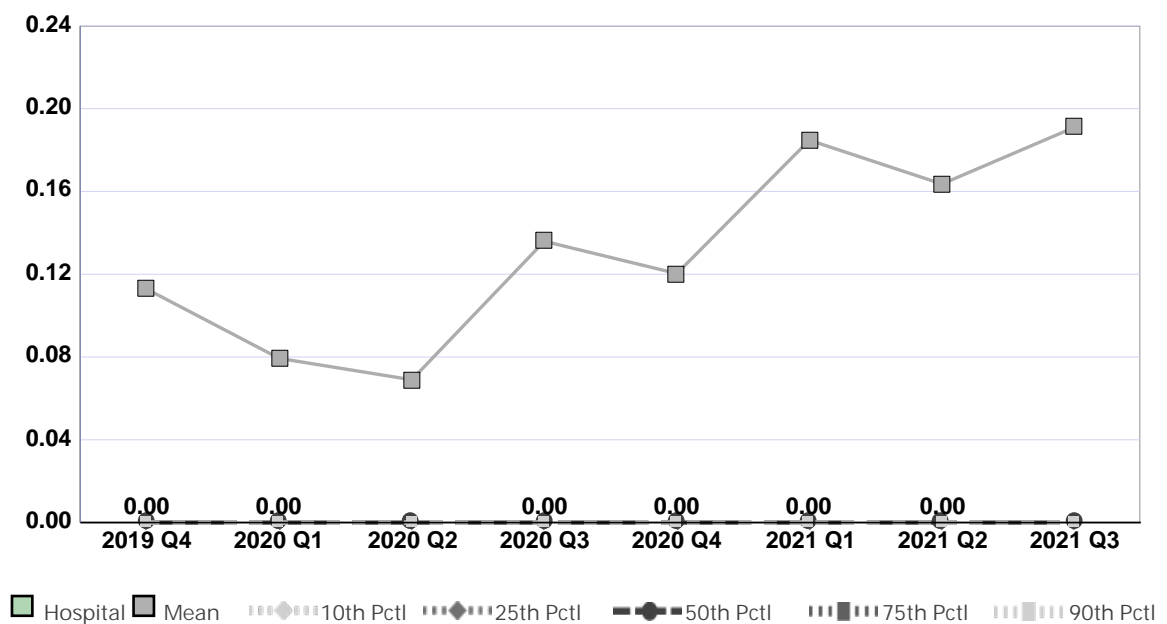
Compared by: All Hospitals

Peer Group: All Hospitals

Unit Type: Adult Surgical

Unit: Surgery -3 North

Measure: Percent of Surveyed Patients with Hospital Acquired Medical Device Related Pressure Injury



Quarter	2019 Q4	2020 Q1	2020 Q2	2020 Q3	2020 Q4	2021 Q1	2021 Q2	2021 Q3	Average
Unit	0.00	0.00	No Data	0.00	0.00	0.00	0.00	No Data	0.00
Mean	0.11	0.08	0.07	0.14	0.12	0.18	0.16	0.19	0.13
Standard Deviation	0.70	0.62	0.57	0.89	0.90	1.38	0.99	1.12	0.90
10th Percentile	0.00	0.00	0.00	0.00	0.00	0.00	0.00	0.00	0.00
25th Percentile	0.00	0.00	0.00	0.00	0.00	0.00	0.00	0.00	0.00
50th Percentile (Median)	0.00	0.00	0.00	0.00	0.00	0.00	0.00	0.00	0.00
75th Percentile	0.00	0.00	0.00	0.00	0.00	0.00	0.00	0.00	0.00
90th Percentile	0.00	0.00	0.00	0.00	0.00	0.00	0.00	0.00	0.00
# Units	1,295	1,181	778	1,142	1,047	1,167	1,222	1,097	1,116

If the number of units or hospitals is less than five, comparison data are suppressed to maintain confidentiality. If the number of units or hospitals is less than 20, comparison data may vary substantially over the time period and should be used with caution. For additional information, please refer to NDNQI reference documents.

## Phelps Memorial Hospital

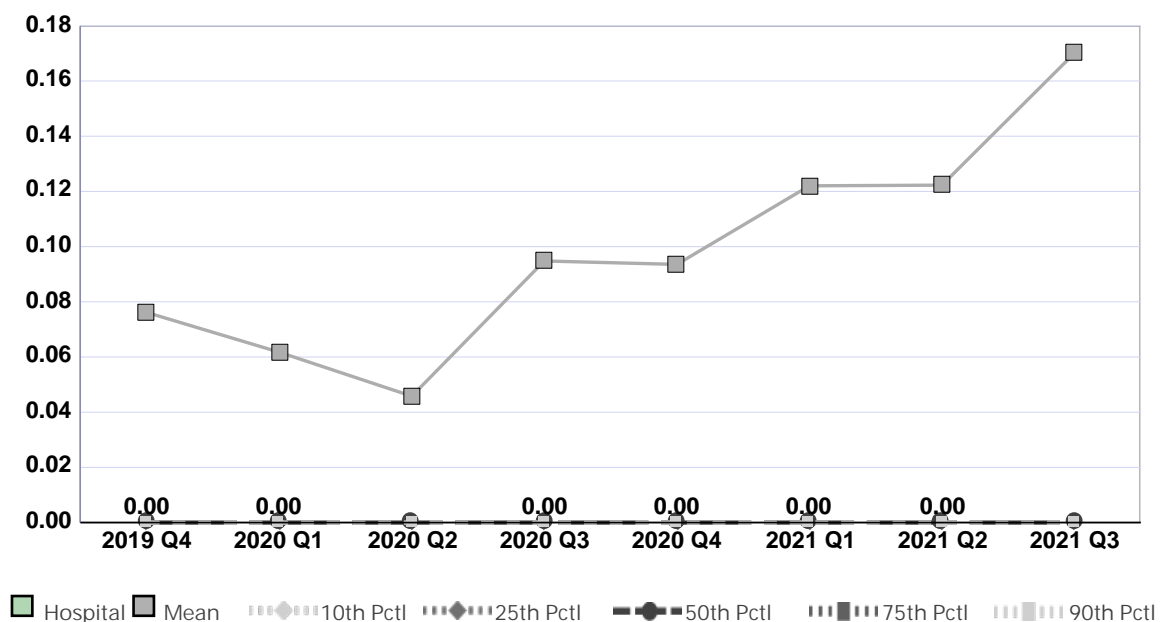
Compared by: All Hospitals

Peer Group: All Hospitals

Unit Type: Adult Surgical

Unit: Surgery -3 North

Measure: Percent of Surveyed Patients with Unit Acquired Medical Device Related Pressure Injury



Quarter	2019 Q4	2020 Q1	2020 Q2	2020 Q3	2020 Q4	2021 Q1	2021 Q2	2021 Q3	Average
Unit	0.00	0.00	No Data	0.00	0.00	0.00	0.00	No Data	0.00
Mean	0.08	0.06	0.05	0.09	0.09	0.12	0.12	0.17	0.10
Standard Deviation	0.59	0.56	0.47	0.74	0.80	1.25	0.83	1.10	0.79
10th Percentile	0.00	0.00	0.00	0.00	0.00	0.00	0.00	0.00	0.00
25th Percentile	0.00	0.00	0.00	0.00	0.00	0.00	0.00	0.00	0.00
50th Percentile (Median)	0.00	0.00	0.00	0.00	0.00	0.00	0.00	0.00	0.00
75th Percentile	0.00	0.00	0.00	0.00	0.00	0.00	0.00	0.00	0.00
90th Percentile	0.00	0.00	0.00	0.00	0.00	0.00	0.00	0.00	0.00
# Units	1,250	1,119	741	1,063	992	1,076	1,125	1,009	1,047

If the number of units or hospitals is less than five, comparison data are suppressed to maintain confidentiality. If the number of units or hospitals is less than 20, comparison data may vary substantially over the time period and should be used with caution. For additional information, please refer to NDNQI reference documents.

## Phelps Memorial Hospital

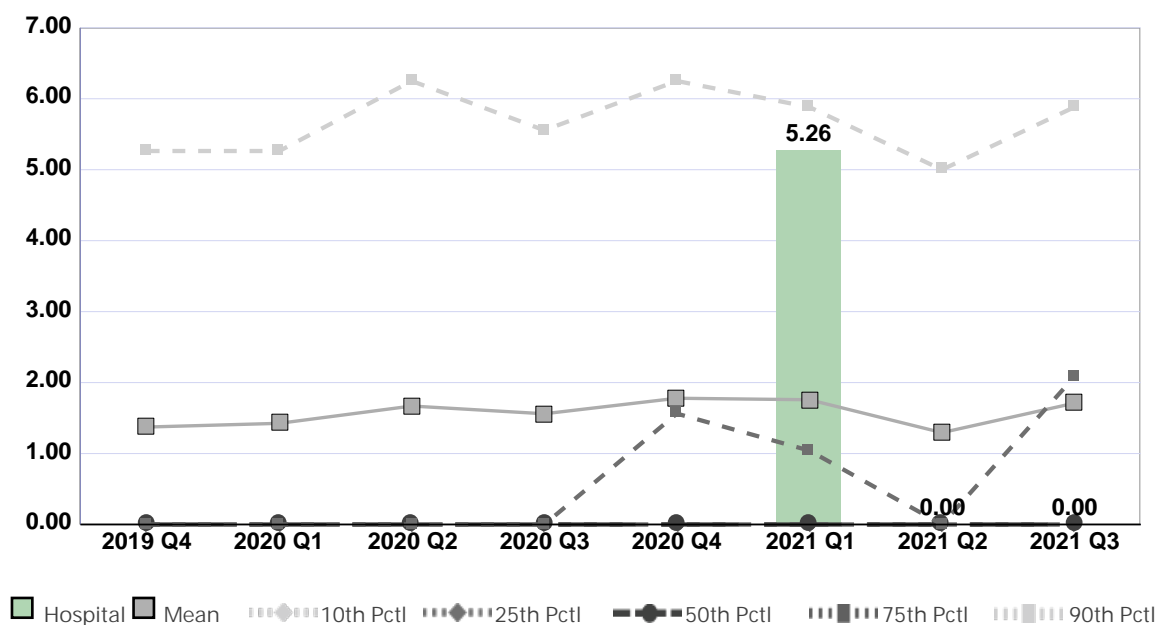
Compared by: All Hospitals

Peer Group: All Hospitals

Unit Type: Adult Med-Surg Combined

Unit: Med/Surg - 2 North

Measure: Percent of Surveyed Patients with Hospital Acquired Pressure Injuries



Quarter	2019 Q4	2020 Q1	2020 Q2	2020 Q3	2020 Q4	2021 Q1	2021 Q2	2021 Q3	Average
Unit	No Data	No Data	No Data	No Data	No Data	5.26	0.00	0.00	1.75
Mean	1.37	1.43	1.67	1.56	1.78	1.76	1.29	1.71	1.57
Standard Deviation	3.29	3.39	4.18	3.88	4.56	4.45	3.41	3.77	3.87
10th Percentile	0.00	0.00	0.00	0.00	0.00	0.00	0.00	0.00	0.00
25th Percentile	0.00	0.00	0.00	0.00	0.00	0.00	0.00	0.00	0.00
50th Percentile (Median)	0.00	0.00	0.00	0.00	0.00	0.00	0.00	0.00	0.00
75th Percentile	0.00	0.00	0.00	0.00	1.56	1.04	0.00	2.08	0.59
90th Percentile	5.26	5.26	6.25	5.56	6.25	5.88	5.00	5.88	5.67
# Units	2,598	2,445	1,838	2,441	2,261	2,515	2,597	2,372	2,383

If the number of units or hospitals is less than five, comparison data are suppressed to maintain confidentiality. If the number of units or hospitals is less than 20, comparison data may vary substantially over the time period and should be used with caution. For additional information, please refer to NDNQI reference documents.

## Phelps Memorial Hospital

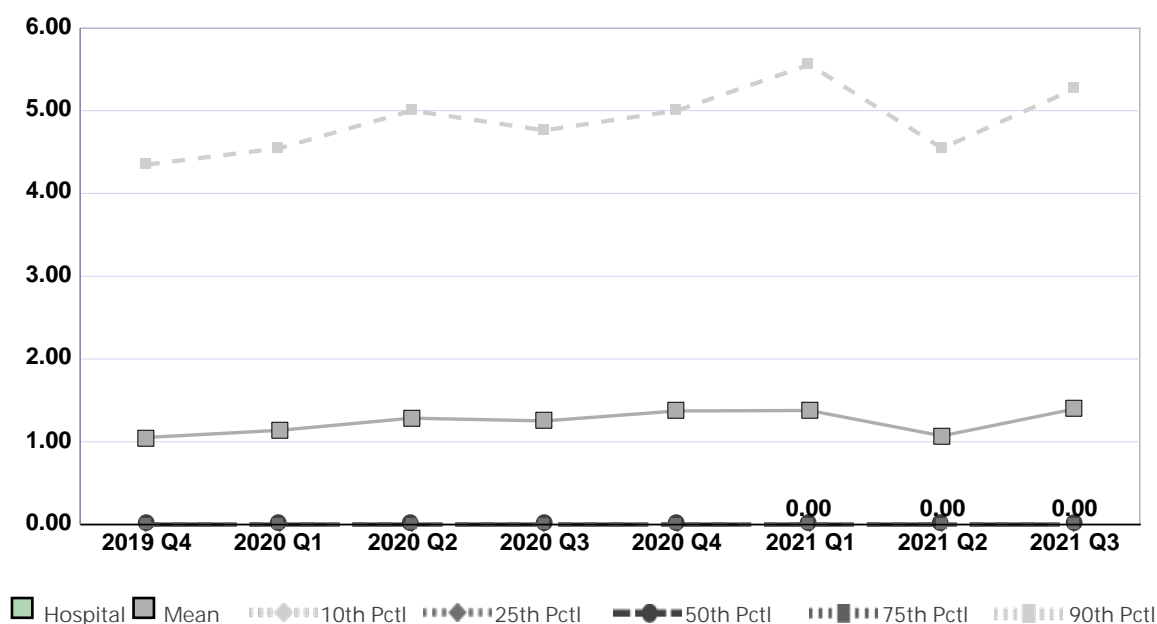
Compared by: All Hospitals

Peer Group: All Hospitals

Unit Type: Adult Med-Surg Combined

Unit: Med/Surg - 2 North

Measure: Percent of Surveyed Patients with Hospital Acquired Pressure Injuries Stage 2 and Above



Quarter	2019 Q4	2020 Q1	2020 Q2	2020 Q3	2020 Q4	2021 Q1	2021 Q2	2021 Q3	Average
Unit	No Data	No Data	No Data	No Data	No Data	0.00	0.00	0.00	0.00
Mean	1.05	1.14	1.29	1.25	1.37	1.38	1.07	1.40	1.24
Standard Deviation	2.58	2.87	3.55	3.22	3.92	3.34	3.05	3.24	3.22
10th Percentile	0.00	0.00	0.00	0.00	0.00	0.00	0.00	0.00	0.00
25th Percentile	0.00	0.00	0.00	0.00	0.00	0.00	0.00	0.00	0.00
50th Percentile (Median)	0.00	0.00	0.00	0.00	0.00	0.00	0.00	0.00	0.00
75th Percentile	0.00	0.00	0.00	0.00	0.00	0.00	0.00	0.00	0.00
90th Percentile	4.35	4.55	5.00	4.76	5.00	5.56	4.55	5.26	4.88
# Units	2,598	2,445	1,838	2,441	2,261	2,515	2,597	2,372	2,383

If the number of units or hospitals is less than five, comparison data are suppressed to maintain confidentiality. If the number of units or hospitals is less than 20, comparison data may vary substantially over the time period and should be used with caution. For additional information, please refer to NDNQI reference documents.

## Phelps Memorial Hospital

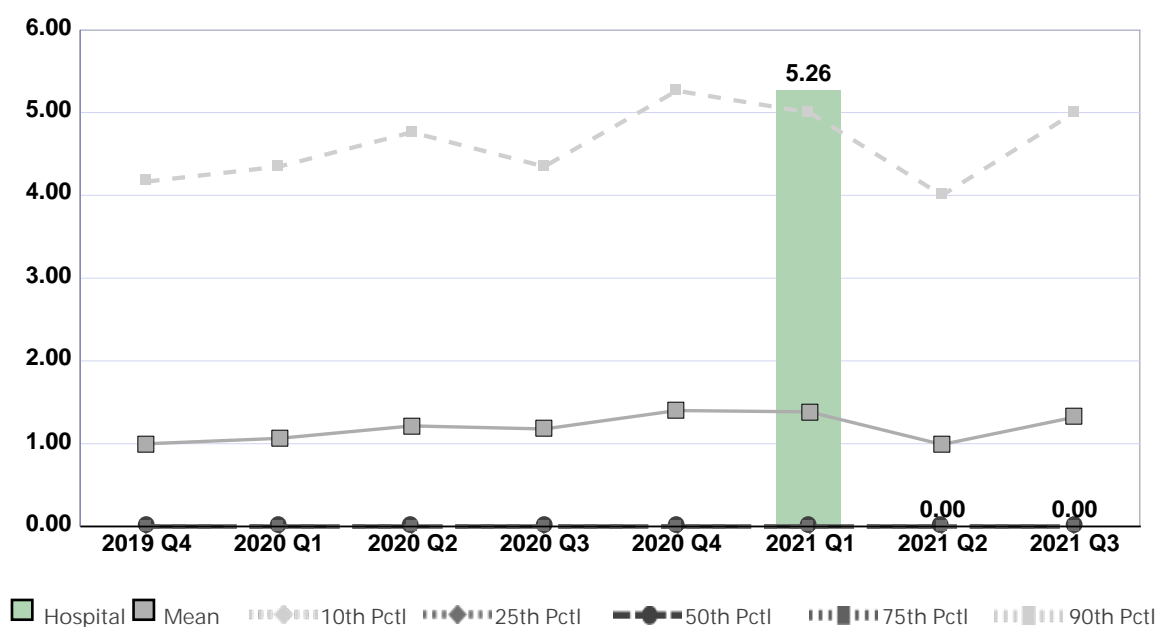
Compared by: All Hospitals

Peer Group: All Hospitals

Unit Type: Adult Med-Surg Combined

Unit: Med/Surg - 2 North

Measure: Percent of Surveyed Patients with Unit Acquired Pressure Injuries



Quarter	2019 Q4	2020 Q1	2020 Q2	2020 Q3	2020 Q4	2021 Q1	2021 Q2	2021 Q3	Average
Unit	No Data	No Data	No Data	No Data	No Data	5.26	0.00	0.00	1.75
Mean	1.00	1.07	1.22	1.18	1.40	1.38	0.99	1.32	1.19
Standard Deviation	2.69	2.93	3.54	3.45	4.01	4.18	3.04	3.34	3.40
10th Percentile	0.00	0.00	0.00	0.00	0.00	0.00	0.00	0.00	0.00
25th Percentile	0.00	0.00	0.00	0.00	0.00	0.00	0.00	0.00	0.00
50th Percentile (Median)	0.00	0.00	0.00	0.00	0.00	0.00	0.00	0.00	0.00
75th Percentile	0.00	0.00	0.00	0.00	0.00	0.00	0.00	0.00	0.00
90th Percentile	4.17	4.35	4.76	4.35	5.26	5.00	4.00	5.00	4.61
# Units	2,468	2,257	1,683	2,250	2,088	2,317	2,354	2,151	2,196

If the number of units or hospitals is less than five, comparison data are suppressed to maintain confidentiality. If the number of units or hospitals is less than 20, comparison data may vary substantially over the time period and should be used with caution. For additional information, please refer to NDNQI reference documents.

## Phelps Memorial Hospital

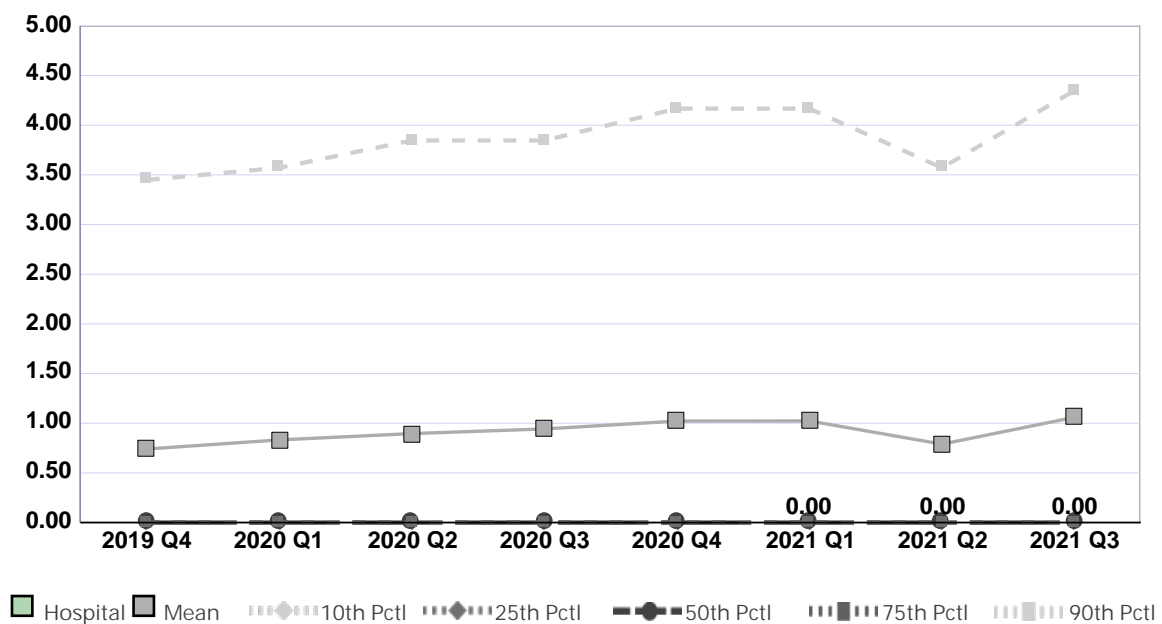
Compared by: All Hospitals

Peer Group: All Hospitals

Unit Type: Adult Med-Surg Combined

Unit: Med/Surg - 2 North

Measure: Percent of Surveyed Patients with Unit Acquired Pressure Injuries Stage 2 and Above



Quarter	2019 Q4	2020 Q1	2020 Q2	2020 Q3	2020 Q4	2021 Q1	2021 Q2	2021 Q3	Average
Unit	No Data	No Data	No Data	No Data	No Data	0.00	0.00	0.00	0.00
Mean	0.74	0.83	0.90	0.94	1.02	1.02	0.79	1.06	0.91
Standard Deviation	2.09	2.43	2.90	2.89	3.43	2.93	2.71	2.88	2.78
10th Percentile	0.00	0.00	0.00	0.00	0.00	0.00	0.00	0.00	0.00
25th Percentile	0.00	0.00	0.00	0.00	0.00	0.00	0.00	0.00	0.00
50th Percentile (Median)	0.00	0.00	0.00	0.00	0.00	0.00	0.00	0.00	0.00
75th Percentile	0.00	0.00	0.00	0.00	0.00	0.00	0.00	0.00	0.00
90th Percentile	3.45	3.57	3.85	3.85	4.17	4.17	3.57	4.35	3.87
# Units	2,468	2,257	1,683	2,250	2,088	2,316	2,354	2,151	2,196

If the number of units or hospitals is less than five, comparison data are suppressed to maintain confidentiality. If the number of units or hospitals is less than 20, comparison data may vary substantially over the time period and should be used with caution. For additional information, please refer to NDNQI reference documents.

## Phelps Memorial Hospital

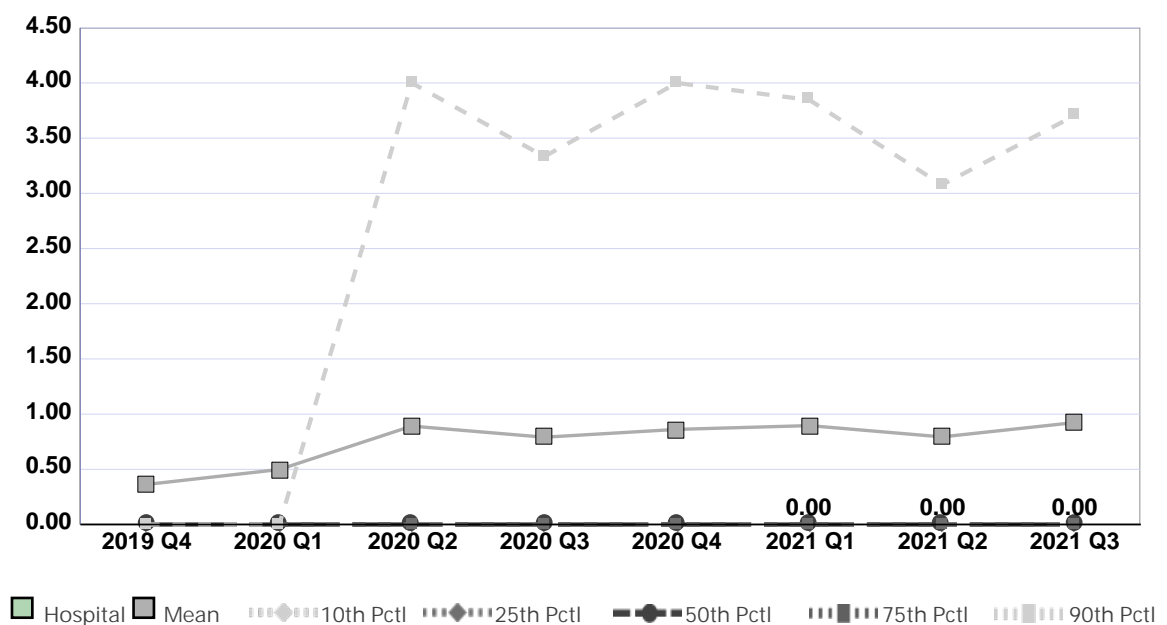
Compared by: All Hospitals

Peer Group: All Hospitals

Unit Type: Adult Med-Surg Combined

Unit: Med/Surg - 2 North

Measure: Percent of Patients with Physical Restraints (Limb and/or Vest)



Quarter	2019 Q4	2020 Q1	2020 Q2	2020 Q3	2020 Q4	2021 Q1	2021 Q2	2021 Q3	Average
Unit	No Data	No Data	No Data	No Data	No Data	0.00	0.00	0.00	0.00
Mean	0.36	0.50	0.89	0.79	0.86	0.90	0.79	0.92	0.75
Standard Deviation	1.41	2.18	2.89	2.70	2.48	3.92	3.85	4.10	2.94
10th Percentile	0.00	0.00	0.00	0.00	0.00	0.00	0.00	0.00	0.00
25th Percentile	0.00	0.00	0.00	0.00	0.00	0.00	0.00	0.00	0.00
50th Percentile (Median)	0.00	0.00	0.00	0.00	0.00	0.00	0.00	0.00	0.00
75th Percentile	0.00	0.00	0.00	0.00	0.00	0.00	0.00	0.00	0.00
90th Percentile	0.00	0.00	4.00	3.33	4.00	3.85	3.08	3.70	2.75
# Units	2,266	2,122	1,602	2,120	1,952	2,124	2,191	2,019	2,050

If the number of units or hospitals is less than five, comparison data are suppressed to maintain confidentiality. If the number of units or hospitals is less than 20, comparison data may vary substantially over the time period and should be used with caution. For additional information, please refer to NDNQI reference documents.



## Phelps Memorial Hospital

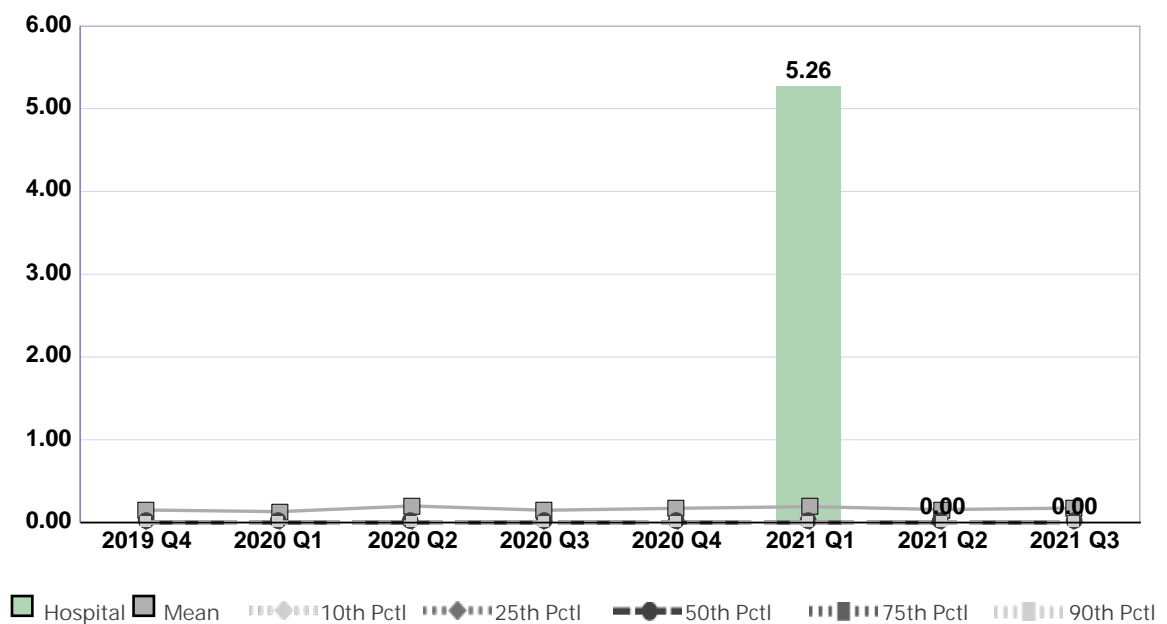
Compared by: All Hospitals

Peer Group: All Hospitals

Unit Type: Adult Med-Surg Combined

Unit: Med/Surg - 2 North

Measure: Percent of Surveyed Patients with Hospital Acquired Medical Device Related Pressure Injury



Quarter	2019 Q4	2020 Q1	2020 Q2	2020 Q3	2020 Q4	2021 Q1	2021 Q2	2021 Q3	Average
Unit	No Data	No Data	No Data	No Data	No Data	5.26	0.00	0.00	1.75
Mean	0.15	0.13	0.20	0.15	0.17	0.19	0.16	0.18	0.17
Standard Deviation	1.02	0.84	1.36	1.29	1.25	1.11	1.04	1.23	1.14
10th Percentile	0.00	0.00	0.00	0.00	0.00	0.00	0.00	0.00	0.00
25th Percentile	0.00	0.00	0.00	0.00	0.00	0.00	0.00	0.00	0.00
50th Percentile (Median)	0.00	0.00	0.00	0.00	0.00	0.00	0.00	0.00	0.00
75th Percentile	0.00	0.00	0.00	0.00	0.00	0.00	0.00	0.00	0.00
90th Percentile	0.00	0.00	0.00	0.00	0.00	0.00	0.00	0.00	0.00
# Units	2,598	2,445	1,838	2,441	2,261	2,515	2,597	2,372	2,383

If the number of units or hospitals is less than five, comparison data are suppressed to maintain confidentiality. If the number of units or hospitals is less than 20, comparison data may vary substantially over the time period and should be used with caution. For additional information, please refer to NDNQI reference documents.



## Phelps Memorial Hospital

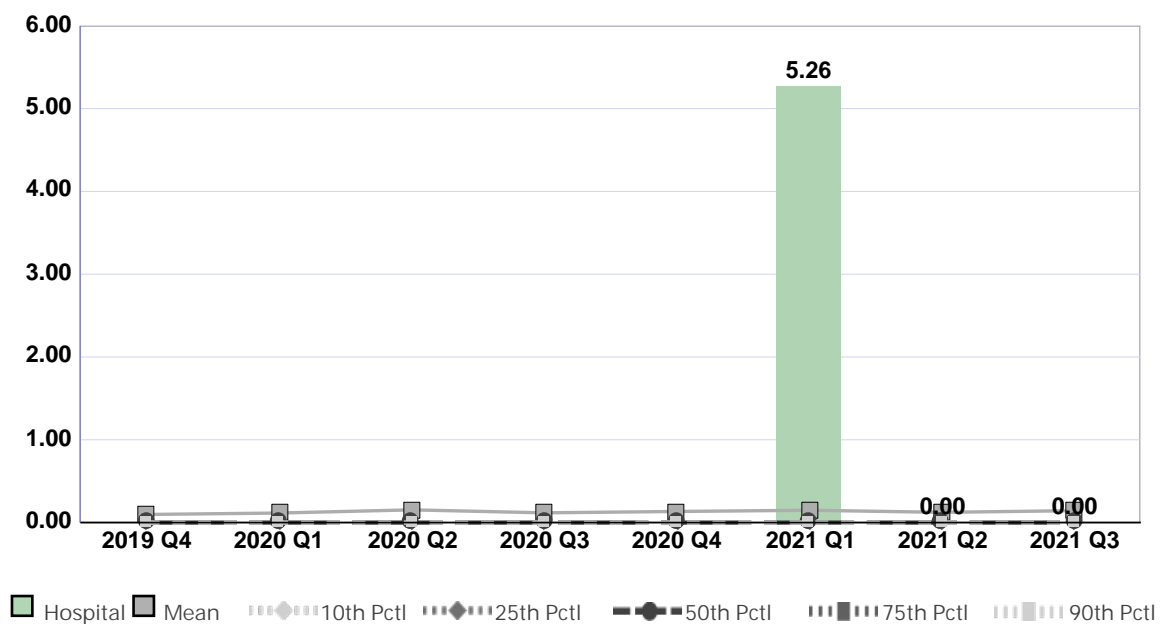
Compared by: All Hospitals

Peer Group: All Hospitals

Unit Type: Adult Med-Surg Combined

Unit: Med/Surg - 2 North

Measure: Percent of Surveyed Patients with Unit Acquired Medical Device Related Pressure Injury



Quarter	2019 Q4	2020 Q1	2020 Q2	2020 Q3	2020 Q4	2021 Q1	2021 Q2	2021 Q3	Average
Unit	No Data	No Data	No Data	No Data	No Data	5.26	0.00	0.00	1.75
Mean	0.10	0.12	0.15	0.12	0.13	0.15	0.12	0.14	0.13
Standard Deviation	0.82	0.80	1.22	1.04	1.18	0.97	0.94	1.20	1.02
10th Percentile	0.00	0.00	0.00	0.00	0.00	0.00	0.00	0.00	0.00
25th Percentile	0.00	0.00	0.00	0.00	0.00	0.00	0.00	0.00	0.00
50th Percentile (Median)	0.00	0.00	0.00	0.00	0.00	0.00	0.00	0.00	0.00
75th Percentile	0.00	0.00	0.00	0.00	0.00	0.00	0.00	0.00	0.00
90th Percentile	0.00	0.00	0.00	0.00	0.00	0.00	0.00	0.00	0.00
# Units	2,468	2,257	1,683	2,250	2,088	2,317	2,354	2,151	2,196

If the number of units or hospitals is less than five, comparison data are suppressed to maintain confidentiality. If the number of units or hospitals is less than 20, comparison data may vary substantially over the time period and should be used with caution. For additional information, please refer to NDNQI reference documents.

## Phelps Memorial Hospital

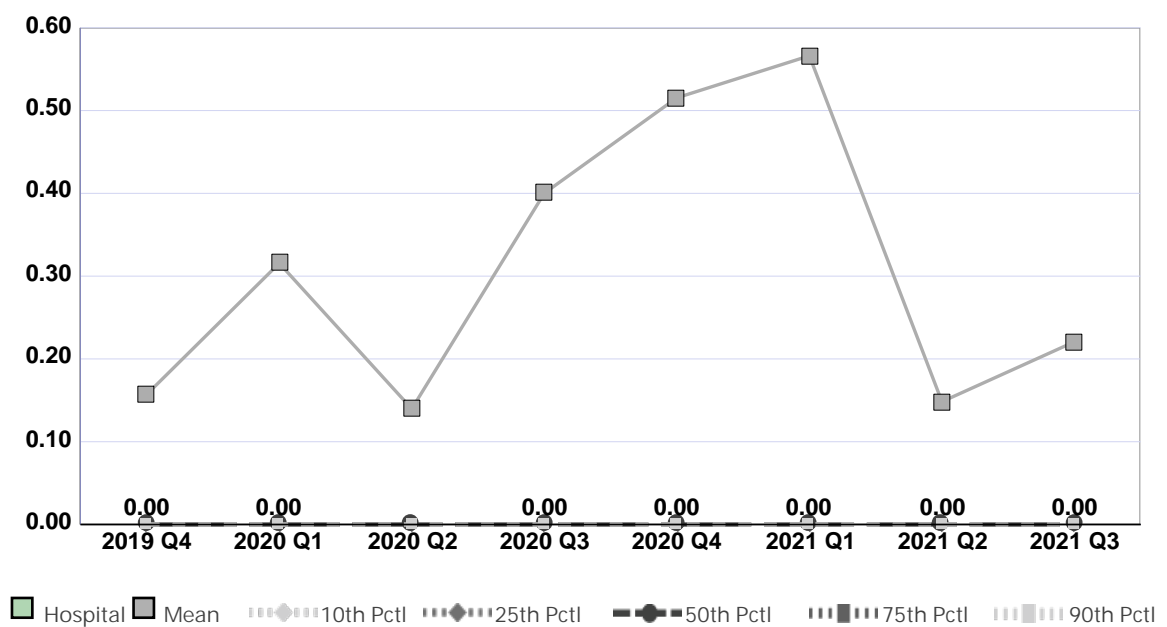
Compared by: All Hospitals

Peer Group: All Hospitals

Unit Type: Adult Psychiatric

Unit: 1S

Measure: Percent of Patients with Physical Restraints (Limb and/or Vest)



Quarter	2019 Q4	2020 Q1	2020 Q2	2020 Q3	2020 Q4	2021 Q1	2021 Q2	2021 Q3	Average
Unit	0.00	0.00	No Data	0.00	0.00	0.00	0.00	0.00	0.00
Mean	0.16	0.32	0.14	0.40	0.52	0.57	0.15	0.22	0.31
Standard Deviation	0.94	1.89	0.85	2.44	2.48	6.69	0.79	1.32	2.18
10th Percentile	0.00	0.00	0.00	0.00	0.00	0.00	0.00	0.00	0.00
25th Percentile	0.00	0.00	0.00	0.00	0.00	0.00	0.00	0.00	0.00
50th Percentile (Median)	0.00	0.00	0.00	0.00	0.00	0.00	0.00	0.00	0.00
75th Percentile	0.00	0.00	0.00	0.00	0.00	0.00	0.00	0.00	0.00
90th Percentile	0.00	0.00	0.00	0.00	0.00	0.00	0.00	0.00	0.00
# Units	253	225	170	205	208	226	220	206	214

If the number of units or hospitals is less than five, comparison data are suppressed to maintain confidentiality. If the number of units or hospitals is less than 20, comparison data may vary substantially over the time period and should be used with caution. For additional information, please refer to NDNQI reference documents.



## Phelps Memorial Hospital

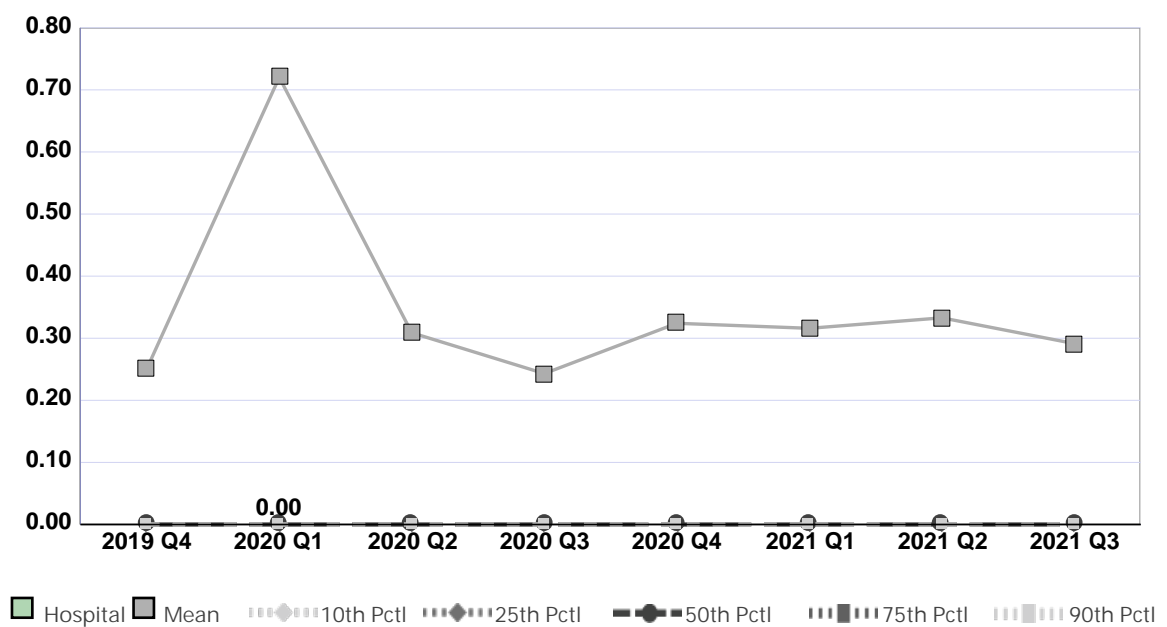
Compared by: All Hospitals

Peer Group: All Hospitals

Unit Type: Pediatric Med-Surg Combined

Unit: Peds

Measure: Percent of Surveyed Patients with Hospital Acquired Pressure Injuries



Quarter	2019 Q4	2020 Q1	2020 Q2	2020 Q3	2020 Q4	2021 Q1	2021 Q2	2021 Q3	Average
Unit	No Data	0.00	No Data	No Data	No Data	No Data	No Data	No Data	0.00
Mean	0.25	0.72	0.31	0.24	0.32	0.32	0.33	0.29	0.35
Standard Deviation	1.24	3.39	1.79	1.25	1.56	1.35	1.49	1.26	1.67
10th Percentile	0.00	0.00	0.00	0.00	0.00	0.00	0.00	0.00	0.00
25th Percentile	0.00	0.00	0.00	0.00	0.00	0.00	0.00	0.00	0.00
50th Percentile (Median)	0.00	0.00	0.00	0.00	0.00	0.00	0.00	0.00	0.00
75th Percentile	0.00	0.00	0.00	0.00	0.00	0.00	0.00	0.00	0.00
90th Percentile	0.00	0.00	0.00	0.00	0.00	0.00	0.00	0.00	0.00
# Units	369	345	235	324	330	338	342	327	326

If the number of units or hospitals is less than five, comparison data are suppressed to maintain confidentiality. If the number of units or hospitals is less than 20, comparison data may vary substantially over the time period and should be used with caution. For additional information, please refer to NDNQI reference documents.



## Phelps Memorial Hospital

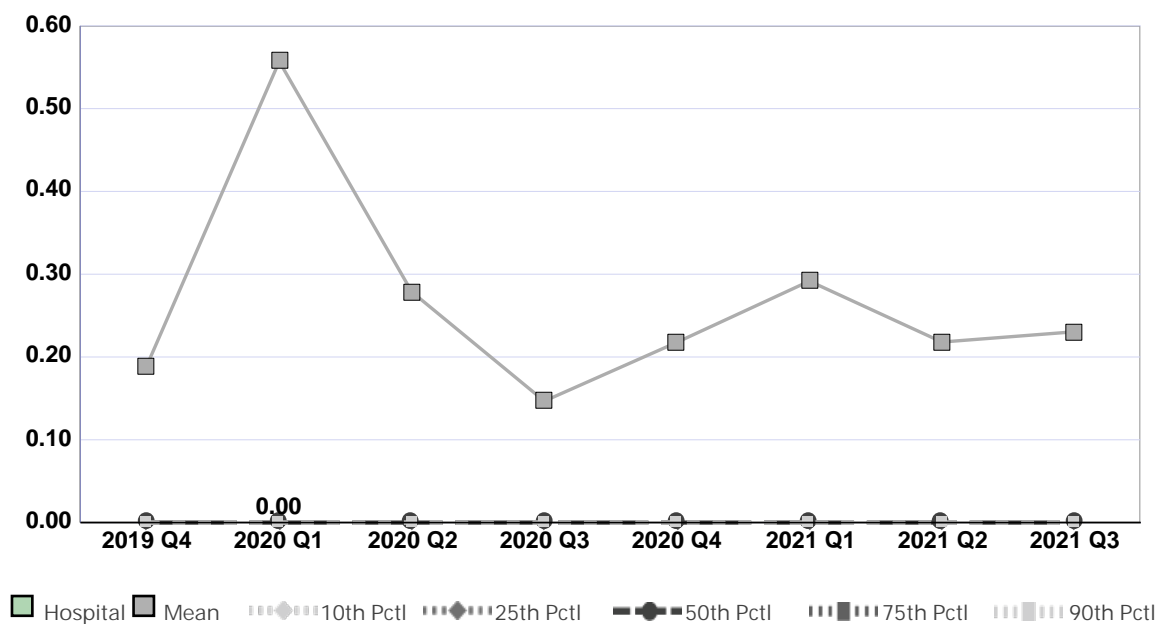
Compared by: All Hospitals

Peer Group: All Hospitals

Unit Type: Pediatric Med-Surg Combined

Unit: Peds

Measure: Percent of Surveyed Patients with Hospital Acquired Pressure Injuries Stage 2 and Above



Quarter	2019 Q4	2020 Q1	2020 Q2	2020 Q3	2020 Q4	2021 Q1	2021 Q2	2021 Q3	Average
Unit	No Data	0.00	No Data	No Data	No Data	No Data	No Data	No Data	0.00
Mean	0.19	0.56	0.28	0.15	0.22	0.29	0.22	0.23	0.27
Standard Deviation	1.06	3.19	1.76	1.00	1.41	1.32	1.15	1.13	1.50
10th Percentile	0.00	0.00	0.00	0.00	0.00	0.00	0.00	0.00	0.00
25th Percentile	0.00	0.00	0.00	0.00	0.00	0.00	0.00	0.00	0.00
50th Percentile (Median)	0.00	0.00	0.00	0.00	0.00	0.00	0.00	0.00	0.00
75th Percentile	0.00	0.00	0.00	0.00	0.00	0.00	0.00	0.00	0.00
90th Percentile	0.00	0.00	0.00	0.00	0.00	0.00	0.00	0.00	0.00
# Units	369	345	235	324	330	338	342	327	326

If the number of units or hospitals is less than five, comparison data are suppressed to maintain confidentiality. If the number of units or hospitals is less than 20, comparison data may vary substantially over the time period and should be used with caution. For additional information, please refer to NDNQI reference documents.

## Phelps Memorial Hospital

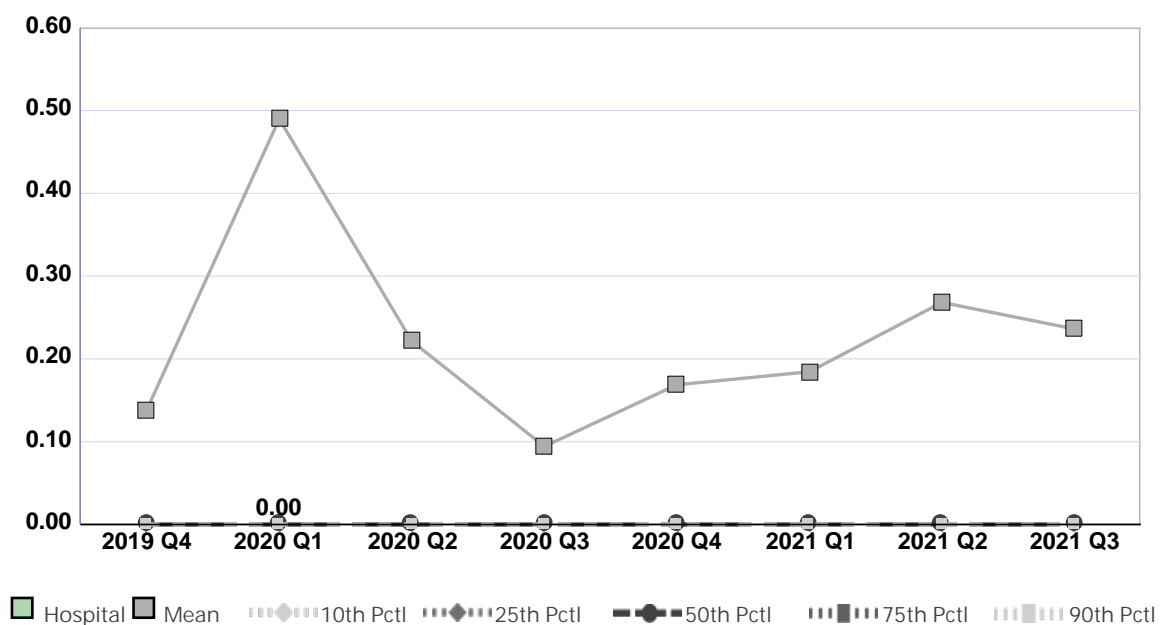
Compared by: All Hospitals

Peer Group: All Hospitals

Unit Type: Pediatric Med-Surg Combined

Unit: Peds

Measure: Percent of Surveyed Patients with Unit Acquired Pressure Injuries



Quarter	2019 Q4	2020 Q1	2020 Q2	2020 Q3	2020 Q4	2021 Q1	2021 Q2	2021 Q3	Average
Unit	No Data	0.00	No Data	No Data	No Data	No Data	No Data	No Data	<b>0.00</b>
Mean	0.14	0.49	0.22	0.09	0.17	0.18	0.27	0.24	<b>0.23</b>
Standard Deviation	0.86	3.24	1.62	0.76	1.13	1.05	1.32	1.09	<b>1.38</b>
10th Percentile	0.00	0.00	0.00	0.00	0.00	0.00	0.00	0.00	<b>0.00</b>
25th Percentile	0.00	0.00	0.00	0.00	0.00	0.00	0.00	0.00	<b>0.00</b>
50th Percentile (Median)	0.00	0.00	0.00	0.00	0.00	0.00	0.00	0.00	<b>0.00</b>
75th Percentile	0.00	0.00	0.00	0.00	0.00	0.00	0.00	0.00	<b>0.00</b>
90th Percentile	0.00	0.00	0.00	0.00	0.00	0.00	0.00	0.00	<b>0.00</b>
# Units	356	323	223	302	306	308	315	296	<b>304</b>

If the number of units or hospitals is less than five, comparison data are suppressed to maintain confidentiality. If the number of units or hospitals is less than 20, comparison data may vary substantially over the time period and should be used with caution. For additional information, please refer to NDNQI reference documents.

## Phelps Memorial Hospital

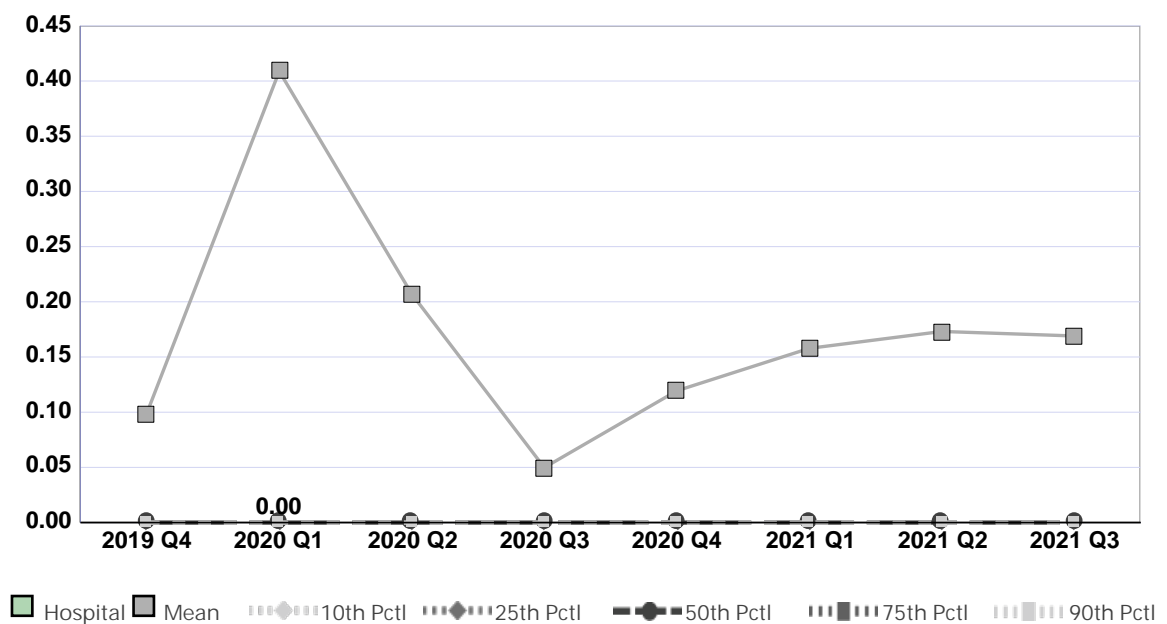
Compared by: All Hospitals

Peer Group: All Hospitals

Unit Type: Pediatric Med-Surg Combined

Unit: Peds

Measure: Percent of Surveyed Patients with Unit Acquired Pressure Injuries Stage 2 and Above



Quarter	2019 Q4	2020 Q1	2020 Q2	2020 Q3	2020 Q4	2021 Q1	2021 Q2	2021 Q3	Average
Unit	No Data	0.00	No Data	No Data	No Data	No Data	No Data	No Data	0.00
Mean	0.10	0.41	0.21	0.05	0.12	0.16	0.17	0.17	0.17
Standard Deviation	0.66	3.10	1.61	0.61	1.01	1.00	1.06	0.92	1.25
10th Percentile	0.00	0.00	0.00	0.00	0.00	0.00	0.00	0.00	0.00
25th Percentile	0.00	0.00	0.00	0.00	0.00	0.00	0.00	0.00	0.00
50th Percentile (Median)	0.00	0.00	0.00	0.00	0.00	0.00	0.00	0.00	0.00
75th Percentile	0.00	0.00	0.00	0.00	0.00	0.00	0.00	0.00	0.00
90th Percentile	0.00	0.00	0.00	0.00	0.00	0.00	0.00	0.00	0.00
# Units	356	323	223	302	306	308	315	296	304

If the number of units or hospitals is less than five, comparison data are suppressed to maintain confidentiality. If the number of units or hospitals is less than 20, comparison data may vary substantially over the time period and should be used with caution. For additional information, please refer to NDNQI reference documents.



## Phelps Memorial Hospital

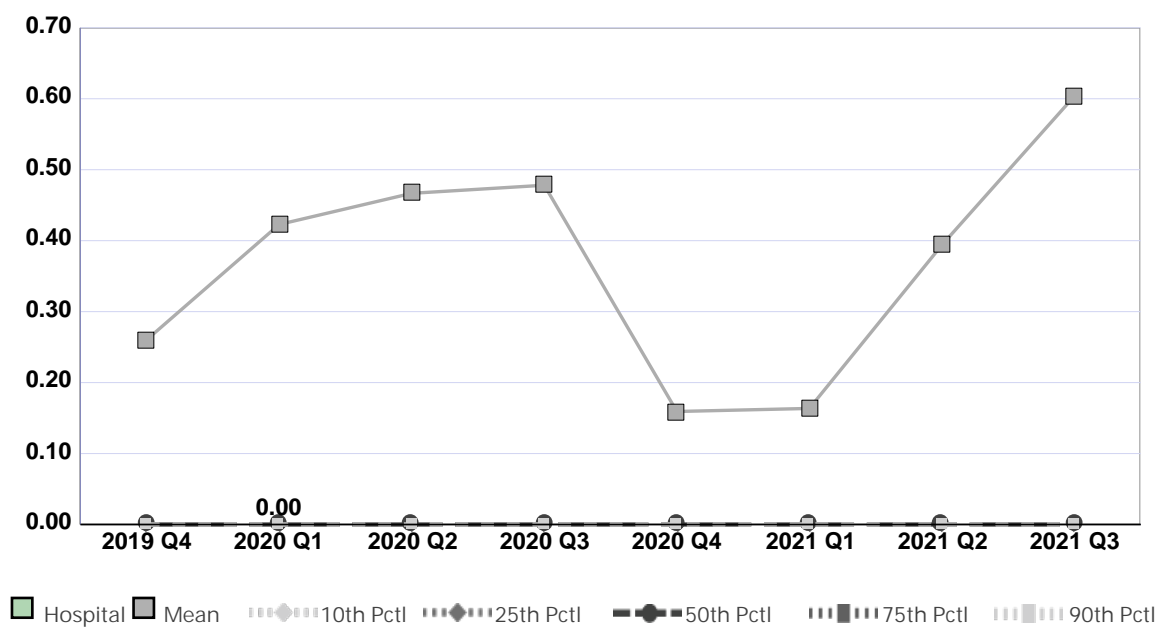
Compared by: All Hospitals

Peer Group: All Hospitals

Unit Type: Pediatric Med-Surg Combined

Unit: Peds

Measure: Percent of Patients with Physical Restraints (Limb and/or Vest)



Quarter	2019 Q4	2020 Q1	2020 Q2	2020 Q3	2020 Q4	2021 Q1	2021 Q2	2021 Q3	Average
Unit	No Data	0.00	No Data	No Data	No Data	No Data	No Data	No Data	0.00
Mean	0.26	0.42	0.47	0.48	0.16	0.16	0.39	0.60	0.37
Standard Deviation	1.37	1.88	2.19	2.23	1.02	1.20	2.51	3.06	1.93
10th Percentile	0.00	0.00	0.00	0.00	0.00	0.00	0.00	0.00	0.00
25th Percentile	0.00	0.00	0.00	0.00	0.00	0.00	0.00	0.00	0.00
50th Percentile (Median)	0.00	0.00	0.00	0.00	0.00	0.00	0.00	0.00	0.00
75th Percentile	0.00	0.00	0.00	0.00	0.00	0.00	0.00	0.00	0.00
90th Percentile	0.00	0.00	0.00	0.00	0.00	0.00	0.00	0.00	0.00
# Units	297	276	199	258	275	272	278	264	265

If the number of units or hospitals is less than five, comparison data are suppressed to maintain confidentiality. If the number of units or hospitals is less than 20, comparison data may vary substantially over the time period and should be used with caution. For additional information, please refer to NDNQI reference documents.



## Phelps Memorial Hospital

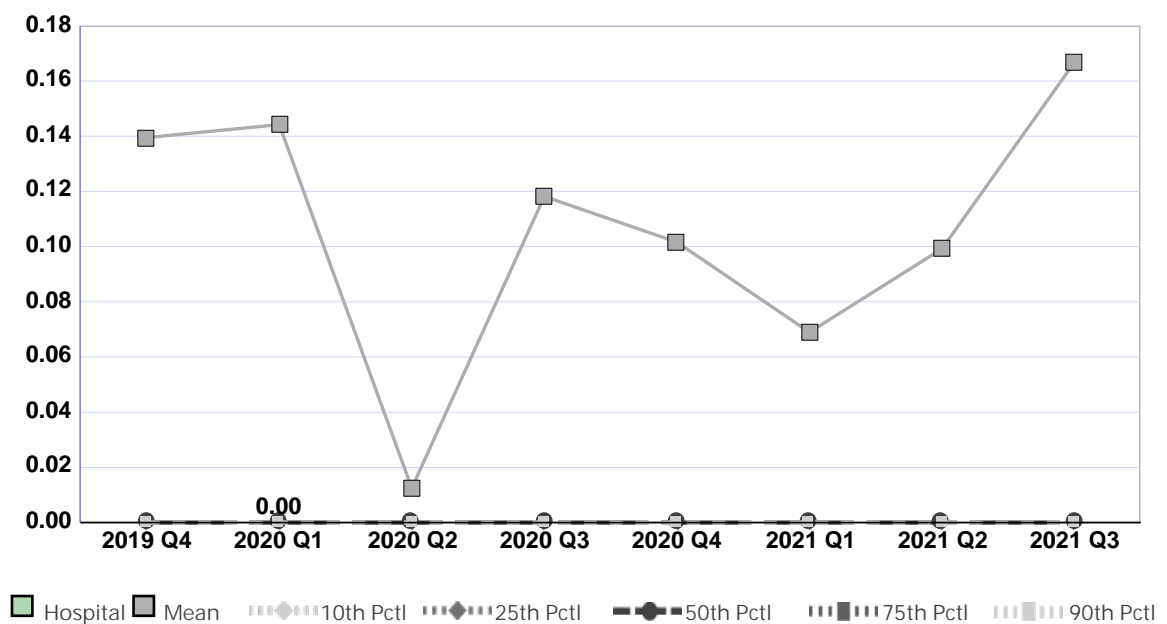
Compared by: All Hospitals

Peer Group: All Hospitals

Unit Type: Pediatric Med-Surg Combined

Unit: Peds

Measure: Percent of Surveyed Patients with Hospital Acquired Medical Device Related Pressure Injury



Quarter	2019 Q4	2020 Q1	2020 Q2	2020 Q3	2020 Q4	2021 Q1	2021 Q2	2021 Q3	Average
Unit	No Data	0.00	No Data	No Data	No Data	No Data	No Data	No Data	0.00
Mean	0.14	0.14	0.01	0.12	0.10	0.07	0.10	0.17	0.11
Standard Deviation	1.00	0.99	0.19	0.81	0.79	0.57	0.86	0.98	0.78
10th Percentile	0.00	0.00	0.00	0.00	0.00	0.00	0.00	0.00	0.00
25th Percentile	0.00	0.00	0.00	0.00	0.00	0.00	0.00	0.00	0.00
50th Percentile (Median)	0.00	0.00	0.00	0.00	0.00	0.00	0.00	0.00	0.00
75th Percentile	0.00	0.00	0.00	0.00	0.00	0.00	0.00	0.00	0.00
90th Percentile	0.00	0.00	0.00	0.00	0.00	0.00	0.00	0.00	0.00
# Units	369	345	235	324	330	338	342	327	326

If the number of units or hospitals is less than five, comparison data are suppressed to maintain confidentiality. If the number of units or hospitals is less than 20, comparison data may vary substantially over the time period and should be used with caution. For additional information, please refer to NDNQI reference documents.

## Phelps Memorial Hospital

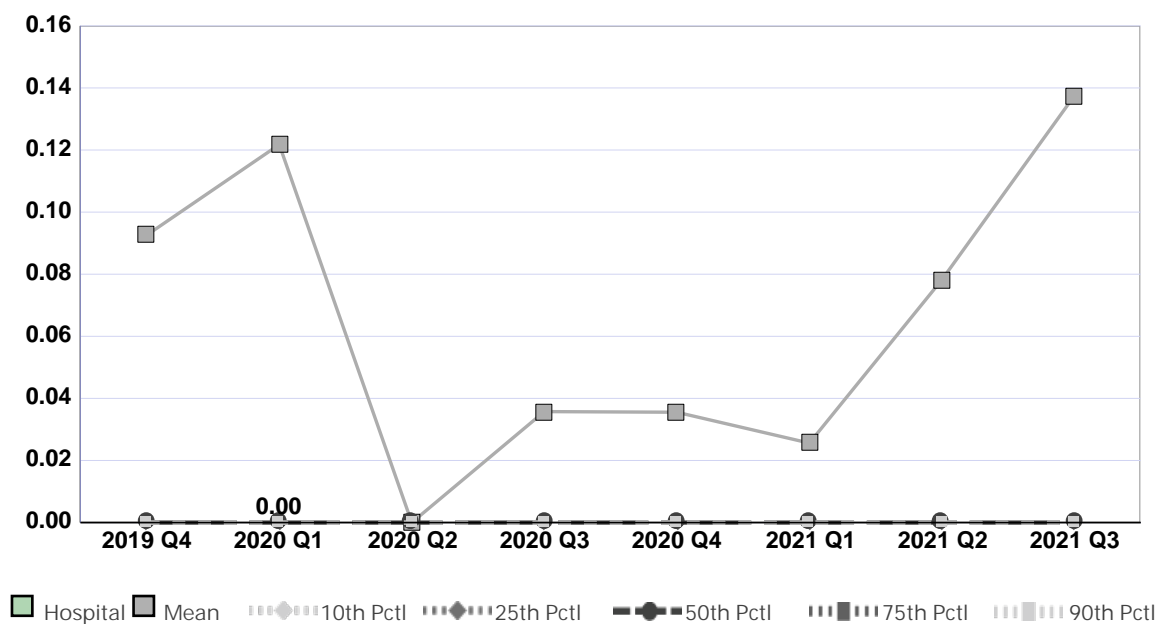
Compared by: All Hospitals

Peer Group: All Hospitals

Unit Type: Pediatric Med-Surg Combined

Unit: Peds

Measure: Percent of Surveyed Patients with Unit Acquired Medical Device Related Pressure Injury



Quarter	2019 Q4	2020 Q1	2020 Q2	2020 Q3	2020 Q4	2021 Q1	2021 Q2	2021 Q3	Average
Unit	No Data	0.00	No Data	No Data	No Data	No Data	No Data	No Data	0.00
Mean	0.09	0.12	0.00	0.04	0.04	0.03	0.08	0.14	0.07
Standard Deviation	0.74	0.97	0.00	0.36	0.53	0.32	0.63	0.86	0.55
10th Percentile	0.00	0.00	0.00	0.00	0.00	0.00	0.00	0.00	0.00
25th Percentile	0.00	0.00	0.00	0.00	0.00	0.00	0.00	0.00	0.00
50th Percentile (Median)	0.00	0.00	0.00	0.00	0.00	0.00	0.00	0.00	0.00
75th Percentile	0.00	0.00	0.00	0.00	0.00	0.00	0.00	0.00	0.00
90th Percentile	0.00	0.00	0.00	0.00	0.00	0.00	0.00	0.00	0.00
# Units	356	323	223	302	306	308	315	296	304

If the number of units or hospitals is less than five, comparison data are suppressed to maintain confidentiality. If the number of units or hospitals is less than 20, comparison data may vary substantially over the time period and should be used with caution. For additional information, please refer to NDNQI reference documents.