

Phelps Memorial Hospital

Compared by: All Hospitals

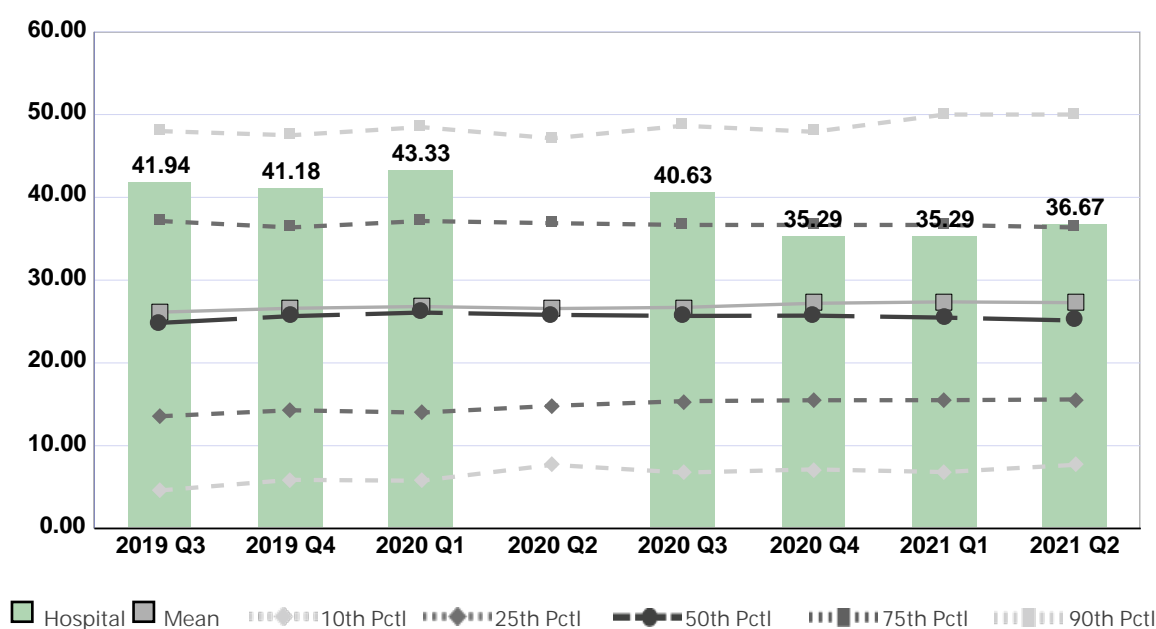
Peer Group: All Hospitals

Unit Type: Adult Critical Care

Unit: Critical Care

Measure: Percent of Direct Care RNs with Specialty Nursing Certification

2021 Unit Goal = 38%



Quarter	2019 Q3	2019 Q4	2020 Q1	2020 Q2	2020 Q3	2020 Q4	2021 Q1	2021 Q2	Average
Unit	41.94	41.18	43.33	No Data	40.63	35.29	35.29	36.67	39.19
Mean	26.13	26.60	26.81	26.57	26.71	27.20	27.37	27.28	26.84
Standard Deviation	16.85	16.35	16.56	15.62	15.85	16.01	16.63	16.77	16.33
10th Percentile	4.60	5.88	5.77	7.69	6.76	7.14	6.82	7.69	6.54
25th Percentile	13.56	14.29	14.00	14.81	15.38	15.49	15.50	15.59	14.83
50th Percentile (Median)	24.84	25.65	26.09	25.81	25.68	25.71	25.47	25.12	25.55
75th Percentile	37.14	36.36	37.14	36.88	36.67	36.67	36.67	36.36	36.74
90th Percentile	48.00	47.50	48.48	47.13	48.65	47.92	50.00	50.00	48.46
# Units	890	878	771	712	768	751	726	712	776

If the number of units or hospitals is less than five, comparison data are suppressed to maintain confidentiality. If the number of units or hospitals is less than 20, comparison data may vary substantially over the time period and should be used with caution. For additional information, please refer to NDNQI reference documents.



Phelps Memorial Hospital

Compared by: All Hospitals

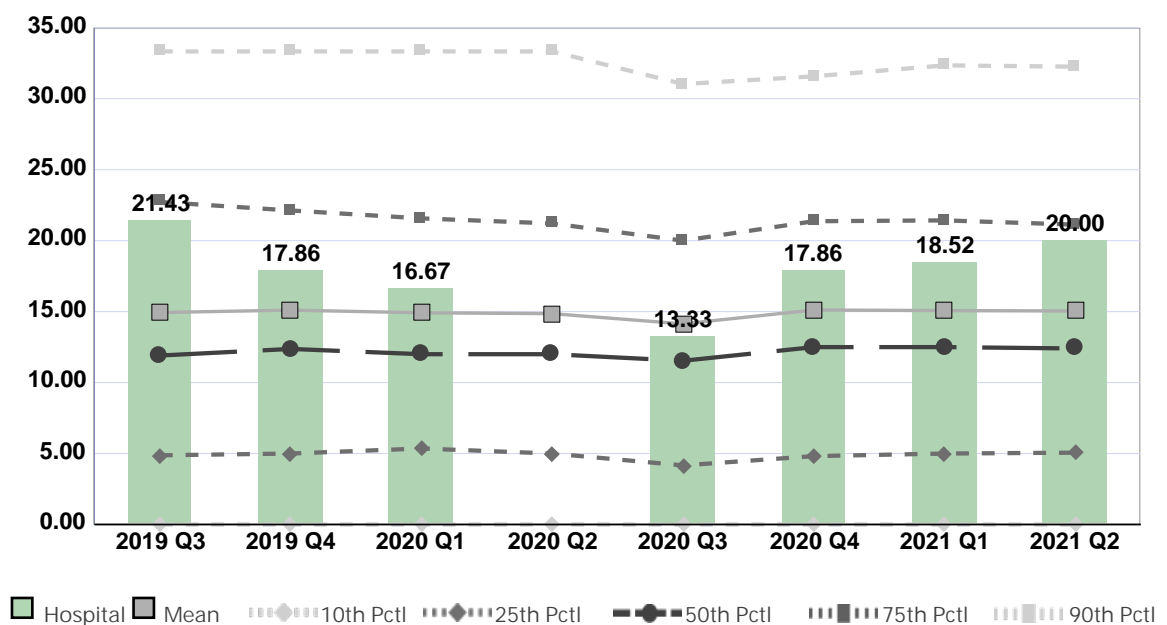
Peer Group: All Hospitals

Unit Type: Adult Step Down

Unit: Intermediate Care (5 South)

Measure: Percent of Direct Care RNs with Specialty Nursing Certification

2021 Unit Goal=21%



Quarter	2019 Q3	2019 Q4	2020 Q1	2020 Q2	2020 Q3	2020 Q4	2021 Q1	2021 Q2	Average
Unit	21.43	17.86	16.67	No Data	13.33	17.86	18.52	20.00	17.95
Mean	14.94	15.11	14.92	14.86	14.14	15.12	15.07	15.05	14.90
Standard Deviation	13.04	12.79	12.71	12.81	12.96	13.49	12.85	13.12	12.97
10th Percentile	0.00	0.00	0.00	0.00	0.00	0.00	0.00	0.00	0.00
25th Percentile	4.88	5.00	5.36	5.00	4.17	4.82	5.00	5.06	4.91
50th Percentile (Median)	11.90	12.37	12.00	12.00	11.54	12.50	12.50	12.40	12.15
75th Percentile	22.73	22.13	21.57	21.21	20.00	21.37	21.43	21.13	21.45
90th Percentile	33.33	33.33	33.33	33.33	31.03	31.58	32.35	32.26	32.57
# Units	607	600	563	525	533	536	491	472	541

If the number of units or hospitals is less than five, comparison data are suppressed to maintain confidentiality. If the number of units or hospitals is less than 20, comparison data may vary substantially over the time period and should be used with caution. For additional information, please refer to NDNQI reference documents.

Phelps Memorial Hospital

Compared by: All Hospitals

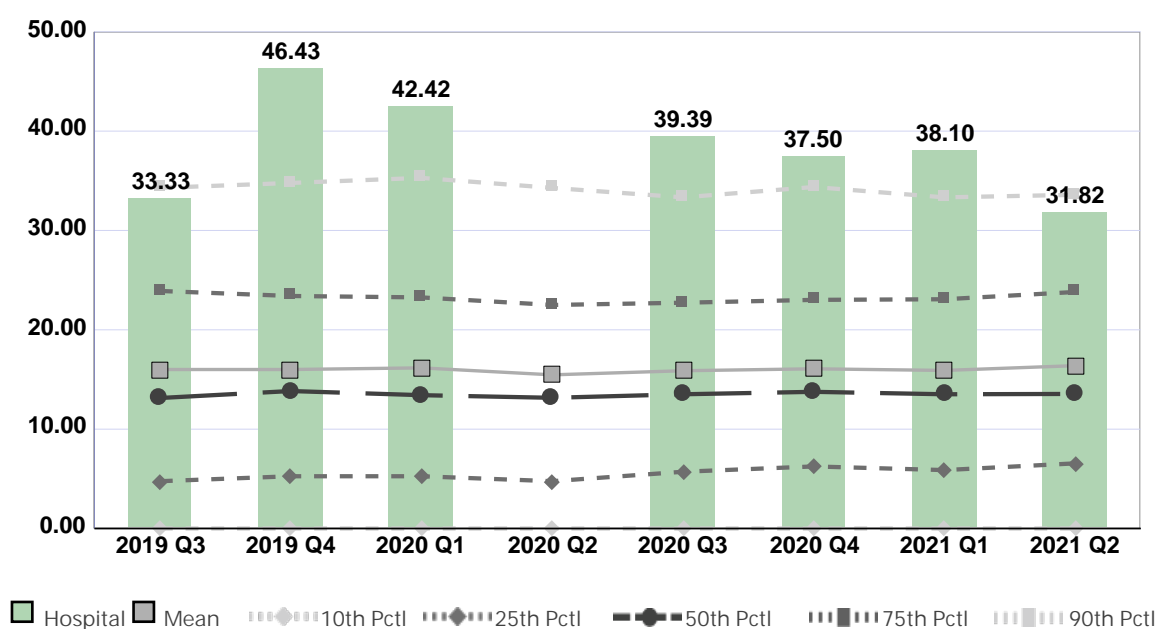
Peer Group: All Hospitals

Unit Type: Adult Medical

Unit: Medicine (5N)

Measure: Percent of Direct Care RNs with Specialty Nursing Certification

2021 Unit Goal=%



Quarter	2019 Q3	2019 Q4	2020 Q1	2020 Q2	2020 Q3	2020 Q4	2021 Q1	2021 Q2	Average
Unit	33.33	46.43	42.42	No Data	39.39	37.50	38.10	31.82	38.43
Mean	16.01	16.01	16.17	15.47	15.88	16.08	15.91	16.39	15.99
Standard Deviation	14.12	13.62	13.72	13.04	13.12	13.04	13.26	13.66	13.45
10th Percentile	0.00	0.00	0.00	0.00	0.00	0.00	0.00	0.00	0.00
25th Percentile	4.76	5.26	5.26	4.76	5.71	6.25	5.88	6.56	5.56
50th Percentile (Median)	13.14	13.84	13.42	13.16	13.51	13.76	13.51	13.55	13.49
75th Percentile	23.91	23.40	23.26	22.50	22.73	23.01	23.08	23.81	23.21
90th Percentile	34.29	34.78	35.29	34.29	33.33	34.38	33.33	33.59	34.16
# Units	806	830	724	684	759	712	713	700	741

If the number of units or hospitals is less than five, comparison data are suppressed to maintain confidentiality. If the number of units or hospitals is less than 20, comparison data may vary substantially over the time period and should be used with caution. For additional information, please refer to NDNQI reference documents.

Phelps Memorial Hospital

Compared by: All Hospitals

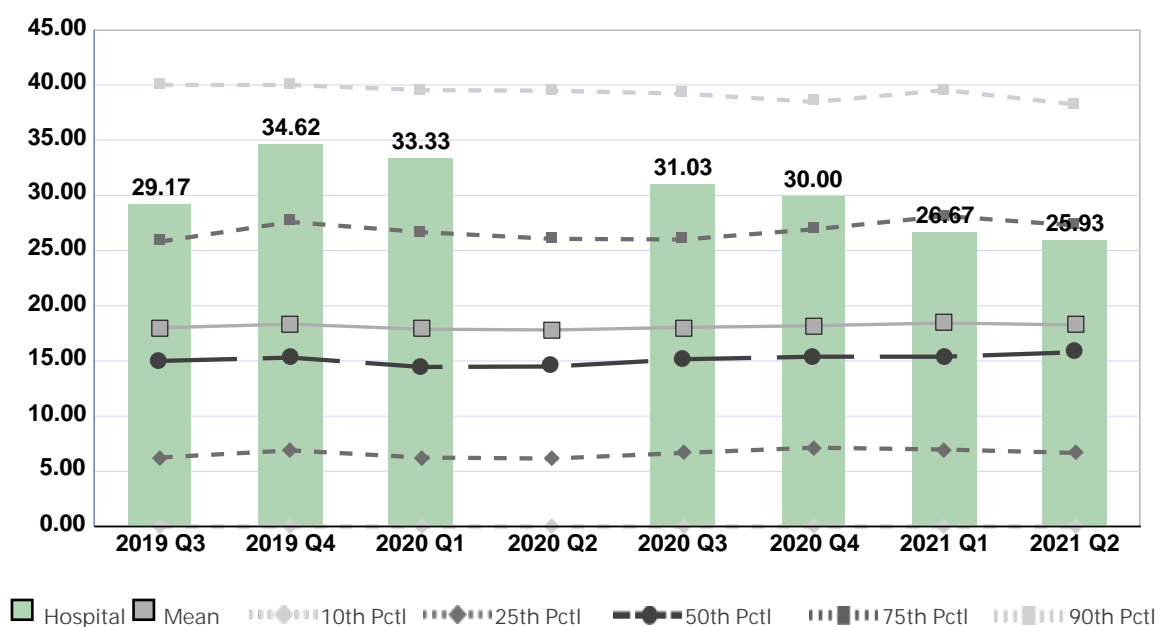
Peer Group: All Hospitals

Unit Type: Adult Surgical

Unit: Ortho (2C)

Measure: Percent of Direct Care RNs with Specialty Nursing Certification

2021 Unit Goal = 34%



Quarter	2019 Q3	2019 Q4	2020 Q1	2020 Q2	2020 Q3	2020 Q4	2021 Q1	2021 Q2	Average
Unit	29.17	34.62	33.33	No Data	31.03	30.00	26.67	25.93	30.11
Mean	18.01	18.33	17.88	17.80	18.04	18.19	18.44	18.26	18.12
Standard Deviation	15.30	14.91	14.80	14.70	15.30	15.01	14.85	14.95	14.98
10th Percentile	0.00	0.00	0.00	0.00	0.00	0.00	0.00	0.00	0.00
25th Percentile	6.25	6.90	6.25	6.16	6.67	7.14	6.98	6.67	6.63
50th Percentile (Median)	15.00	15.30	14.46	14.50	15.15	15.38	15.38	15.79	15.12
75th Percentile	25.81	27.59	26.67	26.06	26.00	26.92	28.13	27.27	26.81
90th Percentile	40.00	40.00	39.53	39.47	39.22	38.46	39.53	38.24	39.31
# Units	538	536	477	456	475	438	435	409	471

If the number of units or hospitals is less than five, comparison data are suppressed to maintain confidentiality. If the number of units or hospitals is less than 20, comparison data may vary substantially over the time period and should be used with caution. For additional information, please refer to NDNQI reference documents.

Phelps Memorial Hospital

Compared by: All Hospitals

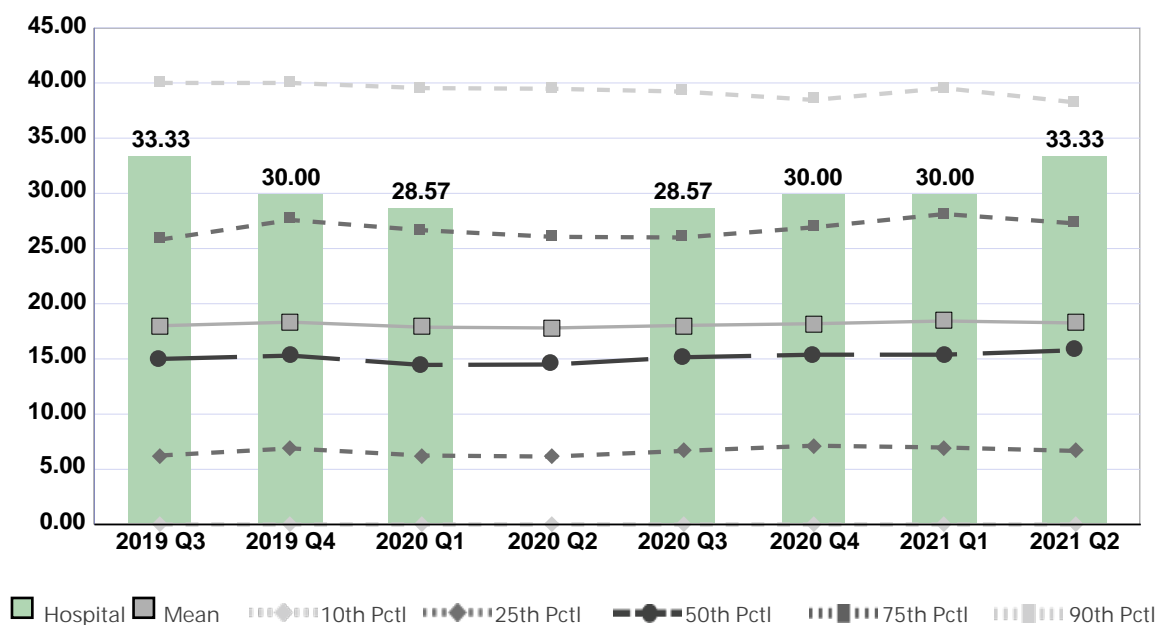
Peer Group: All Hospitals

Unit Type: Adult Surgical

Unit: Surgery -3 North

Measure: Percent of Direct Care RNs with Specialty Nursing Certification

2021 Unit Goal=33%



Quarter	2019 Q3	2019 Q4	2020 Q1	2020 Q2	2020 Q3	2020 Q4	2021 Q1	2021 Q2	Average
Unit	33.33	30.00	28.57	No Data	28.57	30.00	30.00	33.33	30.54
Mean	18.01	18.33	17.88	17.80	18.04	18.19	18.44	18.26	18.12
Standard Deviation	15.30	14.91	14.80	14.70	15.30	15.01	14.85	14.95	14.98
10th Percentile	0.00	0.00	0.00	0.00	0.00	0.00	0.00	0.00	0.00
25th Percentile	6.25	6.90	6.25	6.16	6.67	7.14	6.98	6.67	6.63
50th Percentile (Median)	15.00	15.30	14.46	14.50	15.15	15.38	15.38	15.79	15.12
75th Percentile	25.81	27.59	26.67	26.06	26.00	26.92	28.13	27.27	26.81
90th Percentile	40.00	40.00	39.53	39.47	39.22	38.46	39.53	38.24	39.31
# Units	538	536	477	456	475	438	435	409	471

If the number of units or hospitals is less than five, comparison data are suppressed to maintain confidentiality. If the number of units or hospitals is less than 20, comparison data may vary substantially over the time period and should be used with caution. For additional information, please refer to NDNQI reference documents.

Phelps Memorial Hospital

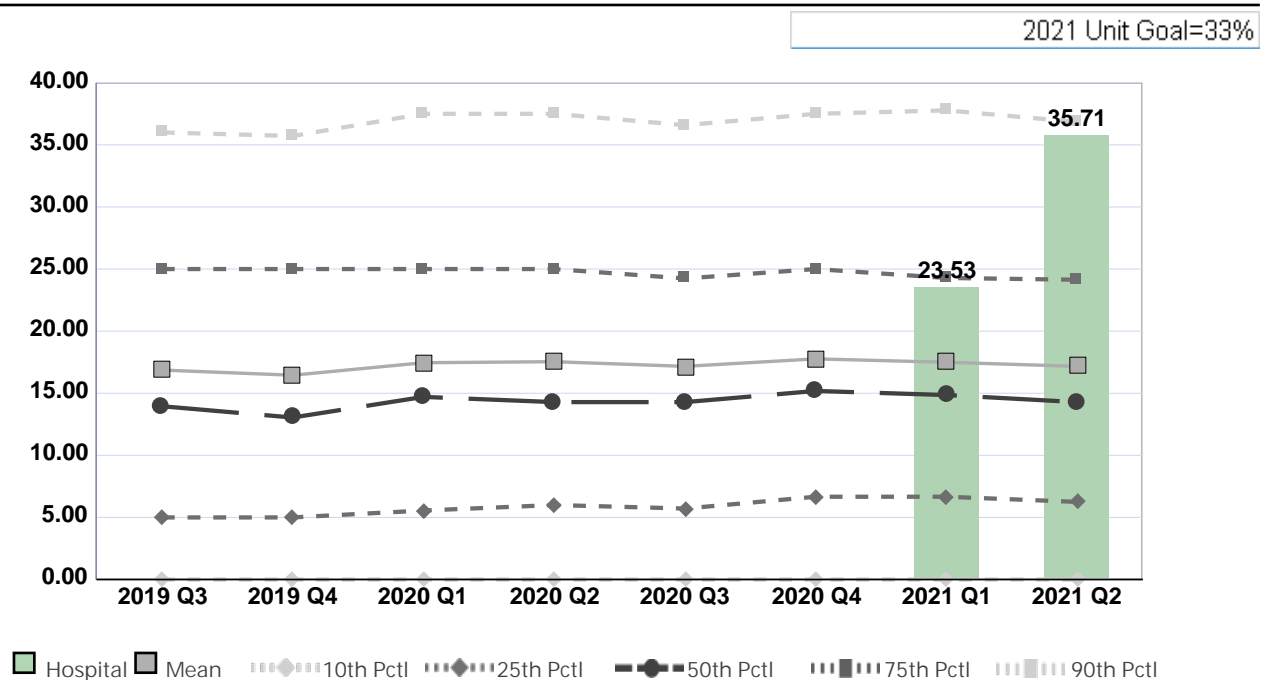
Compared by: All Hospitals

Peer Group: All Hospitals

Unit Type: Adult Med-Surg Combined

Unit: Med/Surg - 2 North

Measure: Percent of Direct Care RNs with Specialty Nursing Certification



Quarter	2019 Q3	2019 Q4	2020 Q1	2020 Q2	2020 Q3	2020 Q4	2021 Q1	2021 Q2	Average
Unit	No Data	No Data	No Data	No Data	No Data	No Data	23.53	35.71	29.62
Mean	16.87	16.45	17.46	17.54	17.16	17.77	17.49	17.17	17.24
Standard Deviation	15.03	14.63	15.05	15.11	14.70	14.86	14.80	14.57	14.84
10th Percentile	0.00	0.00	0.00	0.00	0.00	0.00	0.00	0.00	0.00
25th Percentile	5.00	5.00	5.56	6.00	5.71	6.67	6.67	6.25	5.86
50th Percentile (Median)	13.95	13.04	14.71	14.29	14.29	15.18	14.85	14.29	14.32
75th Percentile	25.00	25.00	25.00	25.00	24.24	25.00	24.28	24.14	24.71
90th Percentile	36.00	35.71	37.50	37.50	36.59	37.50	37.78	36.84	36.93
# Units	1,029	1,051	871	835	863	882	852	859	905

If the number of units or hospitals is less than five, comparison data are suppressed to maintain confidentiality. If the number of units or hospitals is less than 20, comparison data may vary substantially over the time period and should be used with caution. For additional information, please refer to NDNQI reference documents.

Phelps Memorial Hospital

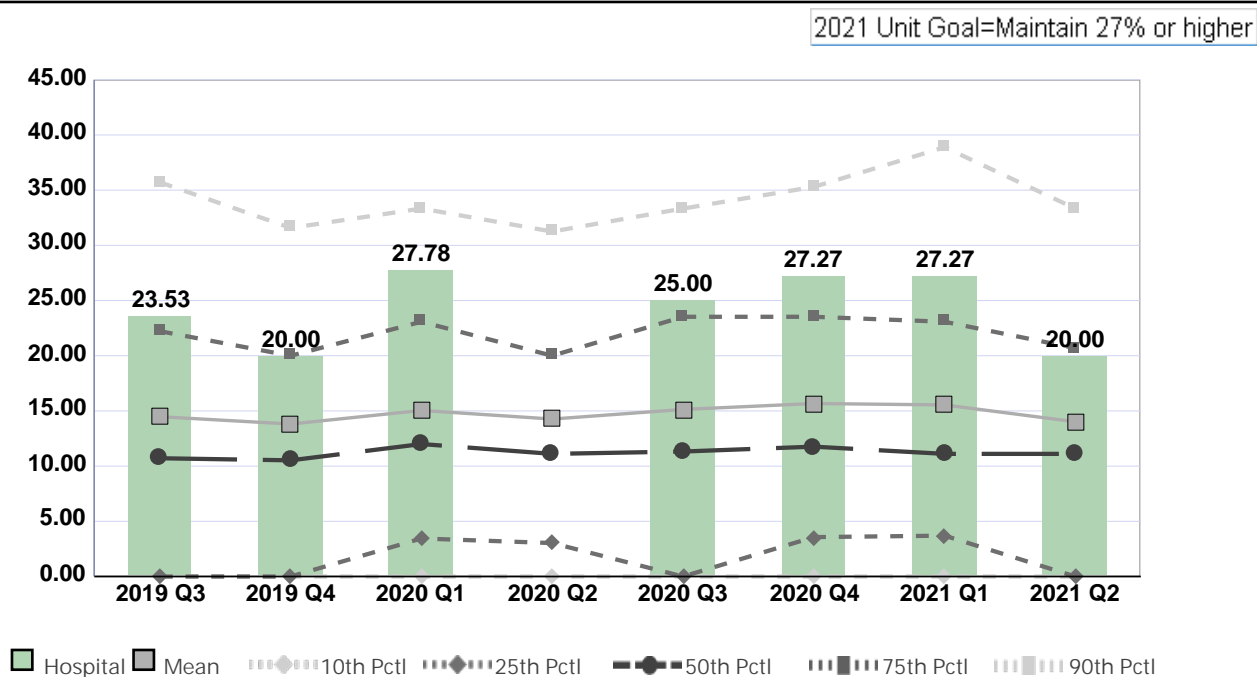
Compared by: All Hospitals

Peer Group: All Hospitals

Unit Type: Adult Psychiatric

Unit: 1S

Measure: Percent of Direct Care RNs with Specialty Nursing Certification



Quarter	2019 Q3	2019 Q4	2020 Q1	2020 Q2	2020 Q3	2020 Q4	2021 Q1	2021 Q2	Average
Unit	23.53	20.00	27.78	No Data	25.00	27.27	27.27	20.00	24.41
Mean	14.48	13.81	15.05	14.27	15.14	15.67	15.54	14.02	14.75
Standard Deviation	14.70	14.72	15.00	14.02	15.50	16.00	15.51	14.32	14.97
10th Percentile	0.00	0.00	0.00	0.00	0.00	0.00	0.00	0.00	0.00
25th Percentile	0.00	0.00	3.45	3.03	0.00	3.57	3.70	0.00	1.72
50th Percentile (Median)	10.71	10.53	12.00	11.11	11.32	11.76	11.11	11.11	11.21
75th Percentile	22.22	20.00	23.08	20.00	23.53	23.53	23.08	20.69	22.02
90th Percentile	35.71	31.58	33.33	31.25	33.33	35.29	38.89	33.33	34.09
# Units	247	262	215	202	216	218	215	203	222

If the number of units or hospitals is less than five, comparison data are suppressed to maintain confidentiality. If the number of units or hospitals is less than 20, comparison data may vary substantially over the time period and should be used with caution. For additional information, please refer to NDNQI reference documents.

Phelps Memorial Hospital

Compared by: All Hospitals

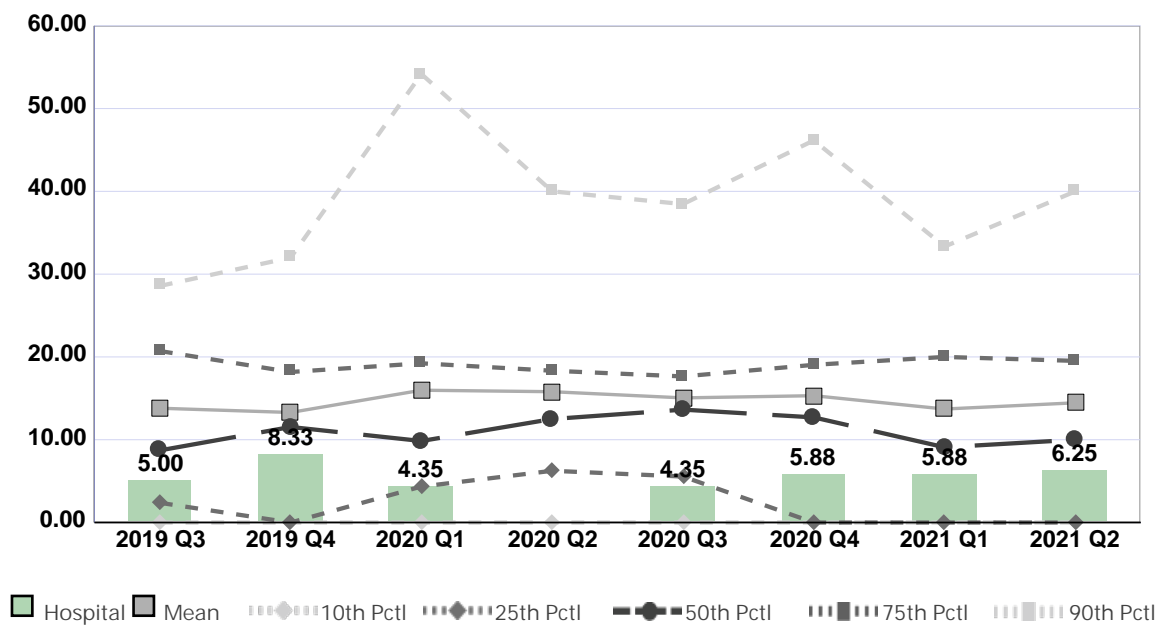
Peer Group: All Hospitals

Unit Type: Behavioral Health

Unit: Behavioral Health

Measure: Percent of Direct Care RNs with Specialty Nursing Certification

2021 Unit Goal=%



Quarter	2019 Q3	2019 Q4	2020 Q1	2020 Q2	2020 Q3	2020 Q4	2021 Q1	2021 Q2	Average
Unit	5.00	8.33	4.35	No Data	4.35	5.88	5.88	6.25	5.72
Mean	13.81	13.29	15.98	15.80	15.05	15.32	13.71	14.46	14.68
Standard Deviation	14.21	12.95	18.86	16.96	14.49	15.76	15.02	15.28	15.44
10th Percentile	0.00	0.00	0.00	0.00	0.00	0.00	0.00	0.00	0.00
25th Percentile	2.38	0.00	4.35	6.25	5.56	0.00	0.00	0.00	2.32
50th Percentile (Median)	8.71	11.54	9.85	12.50	13.64	12.70	9.09	10.00	11.00
75th Percentile	20.71	18.18	19.23	18.33	17.65	19.05	20.00	19.52	19.08
90th Percentile	28.57	32.00	54.17	40.00	38.46	46.15	33.33	40.00	39.09
# Units	36	35	30	28	35	26	25	24	30

If the number of units or hospitals is less than five, comparison data are suppressed to maintain confidentiality. If the number of units or hospitals is less than 20, comparison data may vary substantially over the time period and should be used with caution. For additional information, please refer to NDNQI reference documents.

Phelps Memorial Hospital

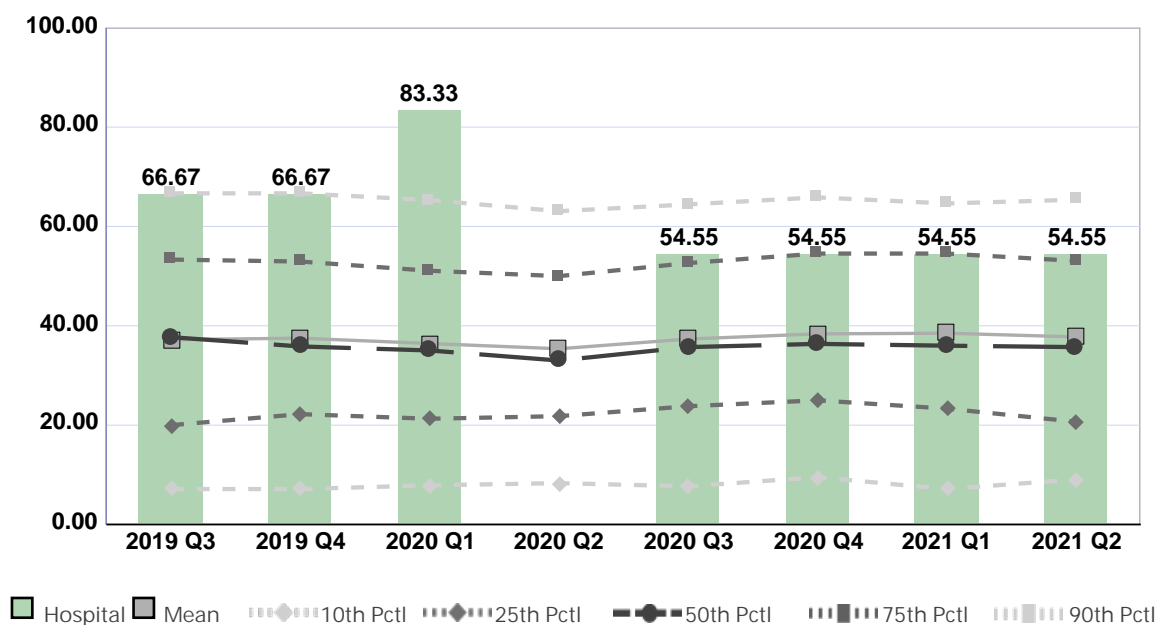
Compared by: All Hospitals

Peer Group: All Hospitals

Unit Type: Pediatric Med-Surg Combined

Unit: Peds

Measure: Percent of Direct Care RNs with Specialty Nursing Certification



Quarter	2019 Q3	2019 Q4	2020 Q1	2020 Q2	2020 Q3	2020 Q4	2021 Q1	2021 Q2	Average
Unit	66.67	66.67	83.33	No Data	54.55	54.55	54.55	54.55	62.12
Mean	37.21	37.52	36.44	35.38	37.34	38.38	38.51	37.77	37.32
Standard Deviation	22.09	22.18	21.26	20.33	20.85	20.90	22.32	21.25	21.40
10th Percentile	7.14	7.14	7.89	8.33	7.69	9.52	7.14	9.09	8.00
25th Percentile	20.00	22.22	21.29	21.82	23.81	25.00	23.33	20.69	22.27
50th Percentile (Median)	37.72	35.85	35.04	33.01	35.71	36.36	36.00	35.71	35.68
75th Percentile	53.33	52.94	51.09	50.00	52.63	54.55	54.55	53.06	52.77
90th Percentile	66.67	66.67	65.31	63.08	64.44	65.85	64.63	65.38	65.25
# Units	180	189	168	156	169	163	157	151	167

If the number of units or hospitals is less than five, comparison data are suppressed to maintain confidentiality. If the number of units or hospitals is less than 20, comparison data may vary substantially over the time period and should be used with caution. For additional information, please refer to NDNQI reference documents.

Phelps Memorial Hospital

Compared by: All Hospitals

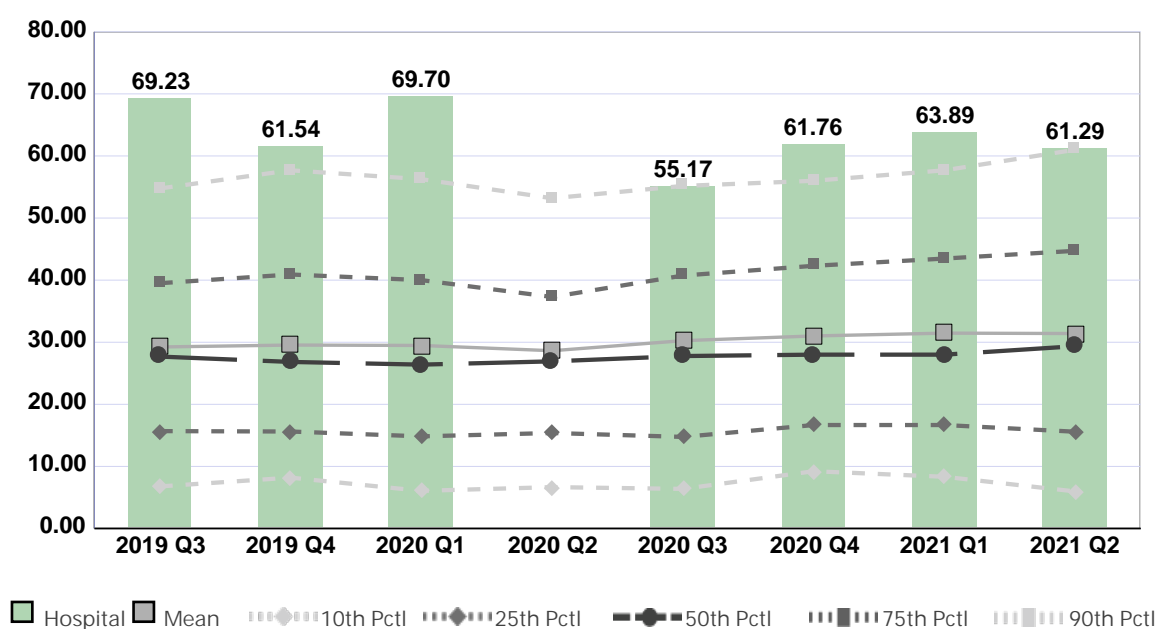
Peer Group: All Hospitals

Unit Type: Mother/Baby

Unit: Well Baby and Postpartum

Measure: Percent of Direct Care RNs with Specialty Nursing Certification

2021 Unit Goal=73%



Quarter	2019 Q3	2019 Q4	2020 Q1	2020 Q2	2020 Q3	2020 Q4	2021 Q1	2021 Q2	Average
Unit	69.23	61.54	69.70	No Data	55.17	61.76	63.89	61.29	63.23
Mean	29.24	29.55	29.48	28.63	30.25	31.01	31.47	31.40	30.13
Standard Deviation	18.72	19.15	19.58	18.06	19.44	18.76	20.11	20.74	19.32
10th Percentile	6.78	8.20	6.07	6.67	6.38	9.23	8.33	5.97	7.20
25th Percentile	15.69	15.63	14.84	15.38	14.75	16.67	16.67	15.59	15.65
50th Percentile (Median)	27.69	26.83	26.39	26.92	27.78	28.00	28.00	29.36	27.62
75th Percentile	39.51	40.91	40.00	37.29	40.74	42.31	43.48	44.72	41.12
90th Percentile	54.76	57.69	56.26	53.19	55.17	56.00	57.69	61.00	56.47
# Units	233	237	200	189	215	201	205	200	210

If the number of units or hospitals is less than five, comparison data are suppressed to maintain confidentiality. If the number of units or hospitals is less than 20, comparison data may vary substantially over the time period and should be used with caution. For additional information, please refer to NDNQI reference documents.

Phelps Memorial Hospital

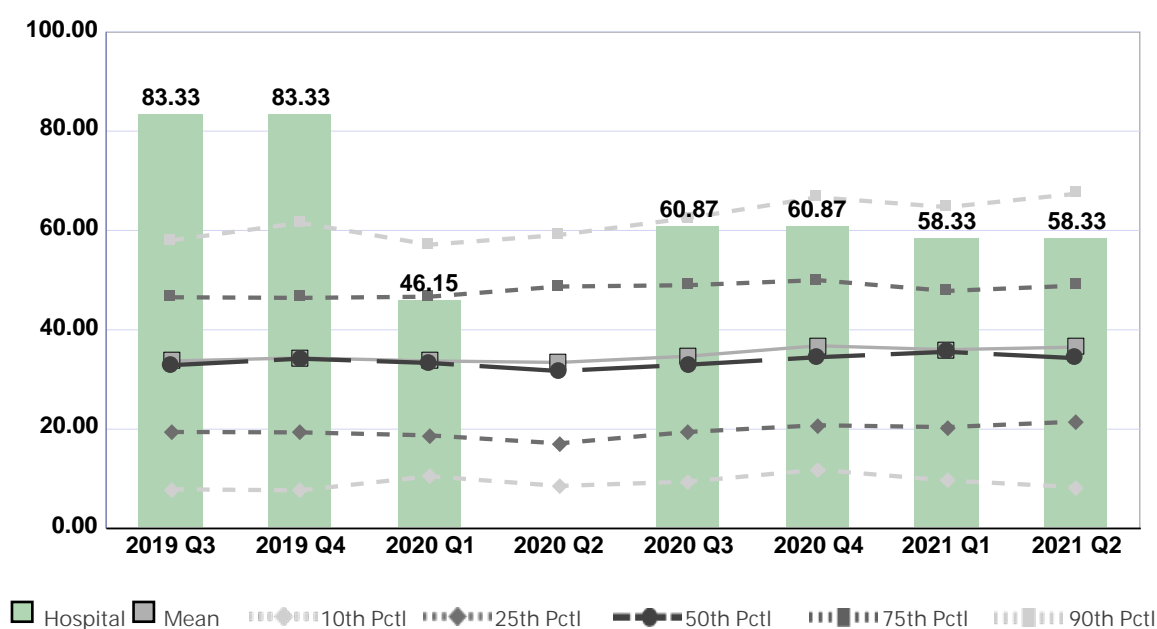
Compared by: All Hospitals

Peer Group: All Hospitals

Unit Type: Labor and Delivery

Unit: Labor and Delivery

Measure: Percent of Direct Care RNs with Specialty Nursing Certification



Quarter	2019 Q3	2019 Q4	2020 Q1	2020 Q2	2020 Q3	2020 Q4	2021 Q1	2021 Q2	Average
Unit	83.33	83.33	46.15	No Data	60.87	60.87	58.33	58.33	64.46
Mean	33.72	34.35	33.74	33.43	34.69	36.79	36.00	36.52	34.90
Standard Deviation	19.46	19.51	18.28	19.37	19.85	20.88	20.06	20.74	19.77
10th Percentile	7.89	7.69	10.53	8.57	9.43	11.84	9.68	8.33	9.25
25th Percentile	19.44	19.35	18.75	17.14	19.44	20.79	20.41	21.52	19.61
50th Percentile (Median)	32.88	34.19	33.33	31.71	32.98	34.48	35.57	34.29	33.68
75th Percentile	46.55	46.43	46.67	48.72	48.98	50.00	47.83	48.89	48.01
90th Percentile	58.00	61.54	57.14	59.09	62.50	66.67	64.71	67.39	62.13
# Units	234	243	205	191	208	205	208	198	212

If the number of units or hospitals is less than five, comparison data are suppressed to maintain confidentiality. If the number of units or hospitals is less than 20, comparison data may vary substantially over the time period and should be used with caution. For additional information, please refer to NDNQI reference documents.

Phelps Memorial Hospital

Compared by: All Hospitals

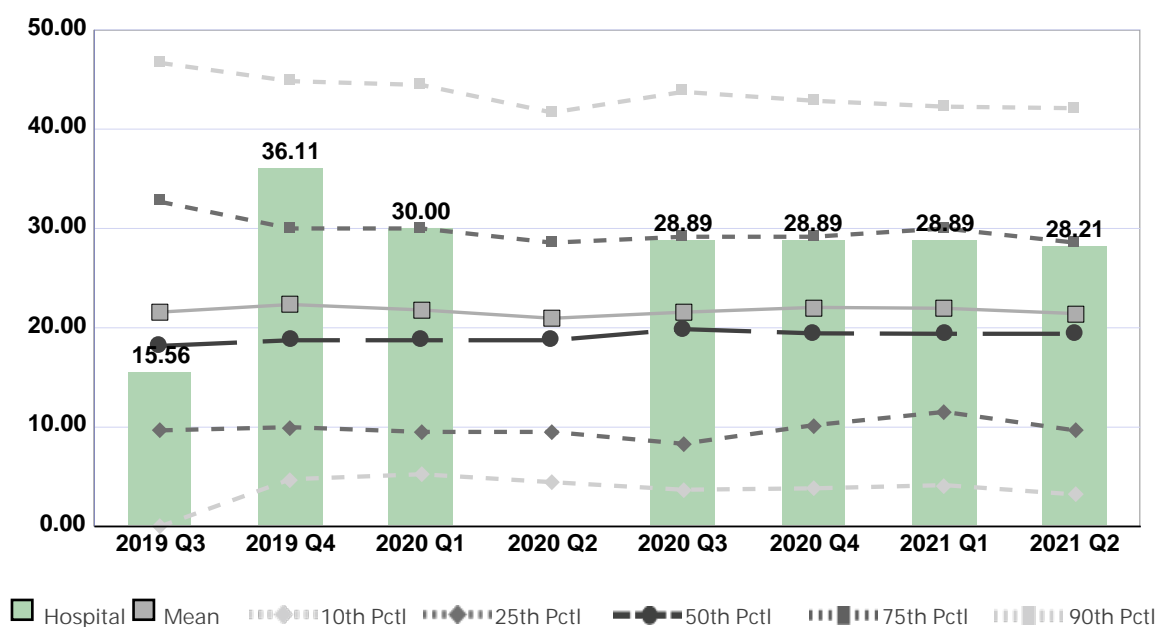
Peer Group: All Hospitals

Unit Type: ED-10,000-29,999 Annual Visits

Unit: ER

Measure: Percent of Direct Care RNs with Specialty Nursing Certification

2021 Unit Goal=Mainain 30% or higher



Quarter	2019 Q3	2019 Q4	2020 Q1	2020 Q2	2020 Q3	2020 Q4	2021 Q1	2021 Q2	Average
Unit	15.56	36.11	30.00	No Data	28.89	28.89	28.89	28.21	28.08
Mean	21.58	22.35	21.80	20.96	21.57	22.06	21.97	21.43	21.71
Standard Deviation	16.94	17.38	15.53	15.10	16.56	16.71	15.38	15.11	16.09
10th Percentile	0.00	4.76	5.26	4.46	3.70	3.85	4.17	3.23	3.68
25th Percentile	9.68	10.00	9.52	9.52	8.33	10.20	11.54	9.68	9.81
50th Percentile (Median)	18.18	18.75	18.75	18.75	19.87	19.44	19.40	19.40	19.07
75th Percentile	32.69	30.00	30.00	28.57	29.17	29.17	30.00	28.57	29.77
90th Percentile	46.67	44.83	44.44	41.67	43.75	42.86	42.26	42.11	43.57
# Units	203	201	169	169	182	177	170	174	181

If the number of units or hospitals is less than five, comparison data are suppressed to maintain confidentiality. If the number of units or hospitals is less than 20, comparison data may vary substantially over the time period and should be used with caution. For additional information, please refer to NDNQI reference documents.

Phelps Memorial Hospital

Compared by: All Hospitals

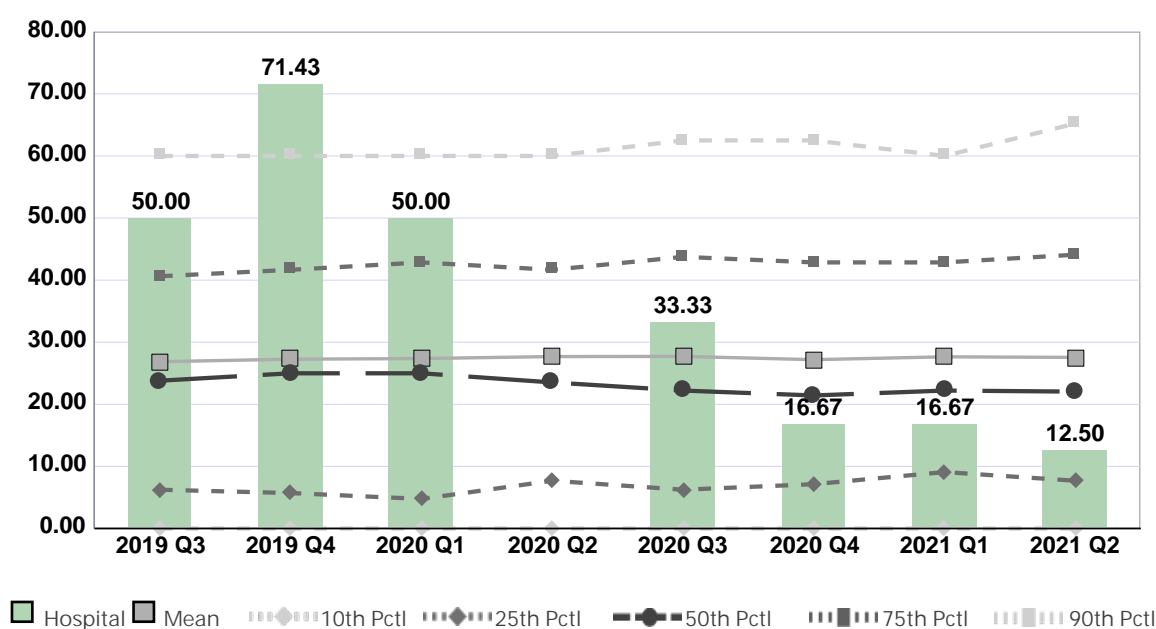
Peer Group: All Hospitals

Unit Type: Interventional Cardiology/Radiology

Unit: Interventional Radiology

Measure: Percent of Direct Care RNs with Specialty Nursing Certification

2021 Unit Goal = maintain



Quarter	2019 Q3	2019 Q4	2020 Q1	2020 Q2	2020 Q3	2020 Q4	2021 Q1	2021 Q2	Average
Unit	50.00	71.43	50.00	No Data	33.33	16.67	16.67	12.50	35.80
Mean	26.87	27.27	27.37	27.69	27.72	27.19	27.65	27.56	27.42
Standard Deviation	23.99	24.06	24.08	24.64	24.79	24.31	24.11	24.50	24.31
10th Percentile	0.00	0.00	0.00	0.00	0.00	0.00	0.00	0.00	0.00
25th Percentile	6.25	5.71	4.76	7.69	6.25	7.14	9.09	7.69	6.82
50th Percentile (Median)	23.81	25.00	25.00	23.53	22.22	21.43	22.22	22.05	23.16
75th Percentile	40.63	41.67	42.86	41.67	43.75	42.86	42.86	44.10	42.55
90th Percentile	60.00	60.00	60.00	60.00	62.50	62.50	60.00	65.22	61.28
# Units	471	475	437	427	466	461	449	456	455

If the number of units or hospitals is less than five, comparison data are suppressed to maintain confidentiality. If the number of units or hospitals is less than 20, comparison data may vary substantially over the time period and should be used with caution. For additional information, please refer to NDNQI reference documents.

Phelps Memorial Hospital

Compared by: All Hospitals

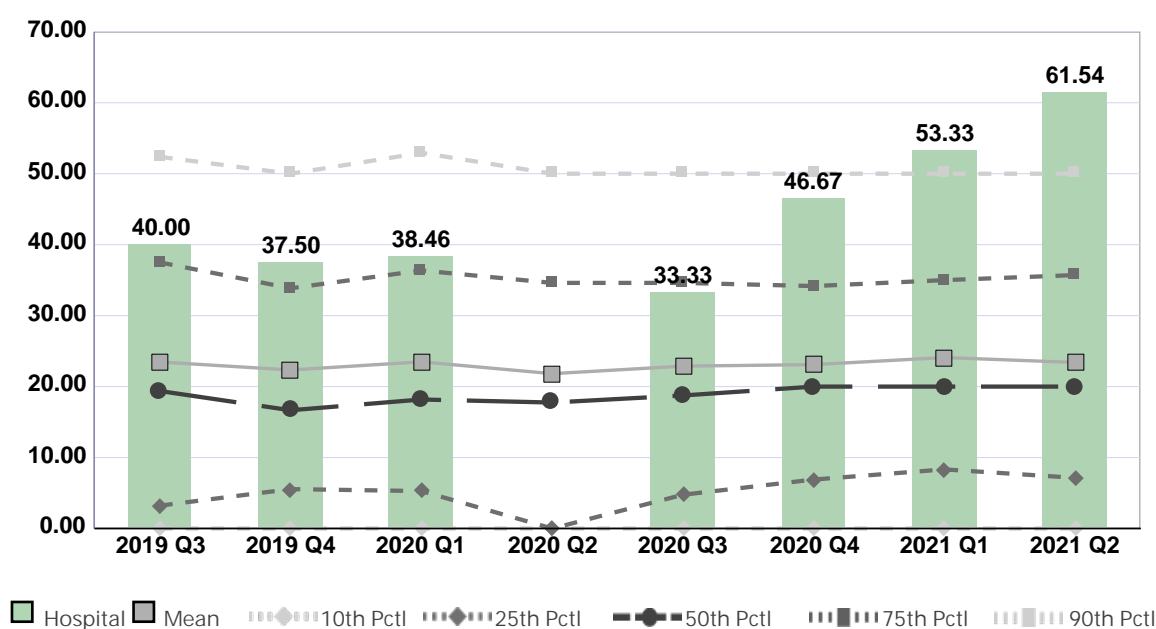
Peer Group: All Hospitals

Unit Type: Endoscopy

Unit: Endoscopy

Measure: Percent of Direct Care RNs with Specialty Nursing Certification

2021 Unit Goal = 46%



Quarter	2019 Q3	2019 Q4	2020 Q1	2020 Q2	2020 Q3	2020 Q4	2021 Q1	2021 Q2	Average
Unit	40.00	37.50	38.46	No Data	33.33	46.67	53.33	61.54	44.40
Mean	23.47	22.34	23.49	21.82	22.88	23.10	24.09	23.40	23.08
Standard Deviation	22.47	21.43	22.79	20.80	20.69	20.39	20.55	20.81	21.24
10th Percentile	0.00	0.00	0.00	0.00	0.00	0.00	0.00	0.00	0.00
25th Percentile	3.23	5.56	5.28	0.00	4.76	6.90	8.33	7.14	5.15
50th Percentile (Median)	19.38	16.67	18.18	17.75	18.75	20.00	20.00	20.00	18.84
75th Percentile	37.50	33.85	36.36	34.62	34.62	34.17	35.00	35.71	35.23
90th Percentile	52.38	50.00	52.94	50.00	50.00	50.00	50.00	50.00	50.67
# Units	306	304	276	266	285	272	271	269	281

If the number of units or hospitals is less than five, comparison data are suppressed to maintain confidentiality. If the number of units or hospitals is less than 20, comparison data may vary substantially over the time period and should be used with caution. For additional information, please refer to NDNQI reference documents.

Phelps Memorial Hospital

Compared by: All Hospitals

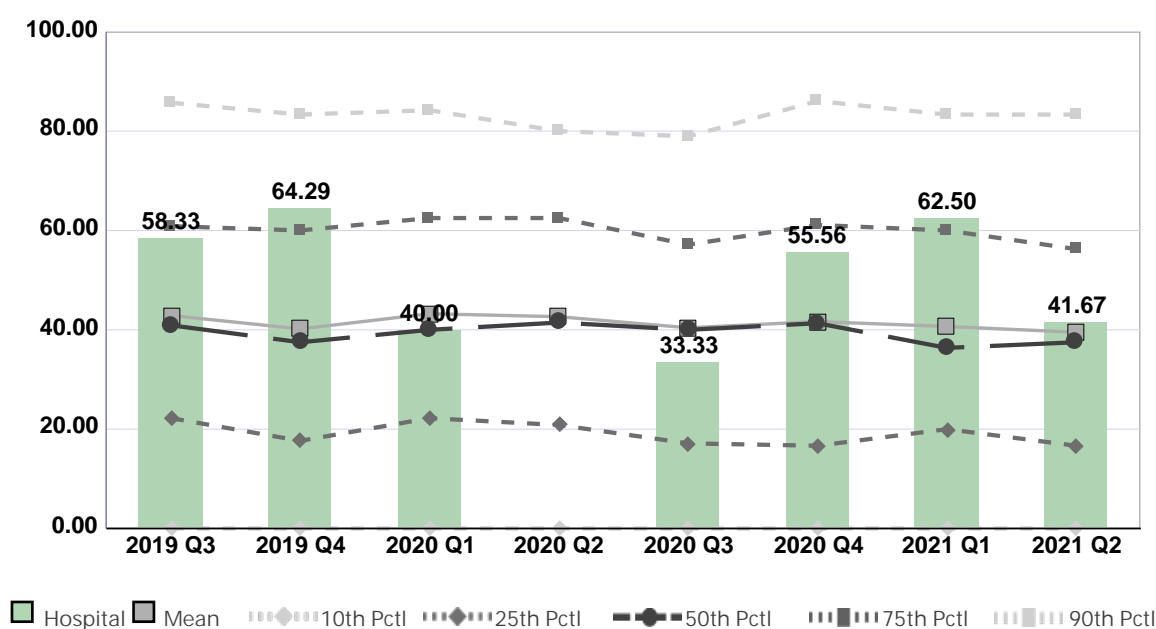
Peer Group: All Hospitals

Unit Type: Cancer Care

Unit: Infusion Unit

Measure: Percent of Direct Care RNs with Specialty Nursing Certification

2021 Unit Goal = 67%



Quarter	2019 Q3	2019 Q4	2020 Q1	2020 Q2	2020 Q3	2020 Q4	2021 Q1	2021 Q2	Average
Unit	58.33	64.29	40.00	No Data	33.33	55.56	62.50	41.67	50.81
Mean	42.88	40.18	43.24	42.64	40.41	41.66	40.67	39.52	41.40
Standard Deviation	29.37	29.11	28.84	28.49	28.74	29.86	28.99	29.15	29.07
10th Percentile	0.00	0.00	0.00	0.00	0.00	0.00	0.00	0.00	0.00
25th Percentile	22.22	17.65	22.22	20.83	17.14	16.67	20.00	16.67	19.18
50th Percentile (Median)	40.91	37.50	40.00	41.46	40.00	41.32	36.36	37.50	39.38
75th Percentile	60.87	60.00	62.50	62.50	57.14	61.11	60.00	56.25	60.05
90th Percentile	85.71	83.33	84.21	80.00	78.95	86.06	83.33	83.33	83.12
# Units	419	451	418	389	465	450	437	453	435

If the number of units or hospitals is less than five, comparison data are suppressed to maintain confidentiality. If the number of units or hospitals is less than 20, comparison data may vary substantially over the time period and should be used with caution. For additional information, please refer to NDNQI reference documents.

Phelps Memorial Hospital

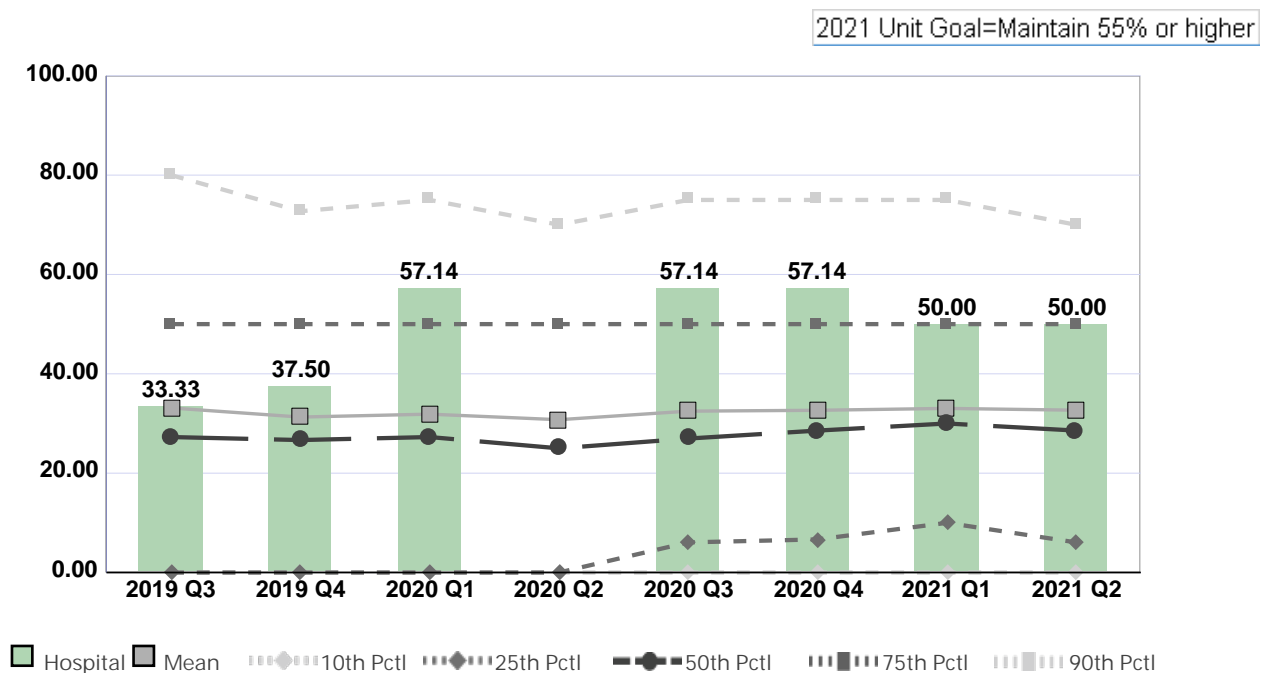
Compared by: All Hospitals

Peer Group: All Hospitals

Unit Type: Procedural Unit

Unit: Wound Clinic

Measure: Percent of Direct Care RNs with Specialty Nursing Certification



Quarter	2019 Q3	2019 Q4	2020 Q1	2020 Q2	2020 Q3	2020 Q4	2021 Q1	2021 Q2	Average
Unit	33.33	37.50	57.14	No Data	57.14	57.14	50.00	50.00	48.89
Mean	33.13	31.29	31.88	30.76	32.48	32.66	33.04	32.68	32.24
Standard Deviation	30.66	29.64	29.30	29.03	29.55	28.96	28.71	28.58	29.30
10th Percentile	0.00	0.00	0.00	0.00	0.00	0.00	0.00	0.00	0.00
25th Percentile	0.00	0.00	0.00	0.00	6.07	6.67	10.00	6.07	3.60
50th Percentile (Median)	27.27	26.67	27.27	25.00	26.97	28.57	30.00	28.57	27.54
75th Percentile	50.00	50.00	50.00	50.00	50.00	50.00	50.00	50.00	50.00
90th Percentile	80.00	72.73	75.00	70.00	75.00	75.00	75.00	70.00	74.09
# Units	500	484	476	446	468	476	462	496	476

If the number of units or hospitals is less than five, comparison data are suppressed to maintain confidentiality. If the number of units or hospitals is less than 20, comparison data may vary substantially over the time period and should be used with caution. For additional information, please refer to NDNQI reference documents.

Phelps Memorial Hospital

Compared by: All Hospitals

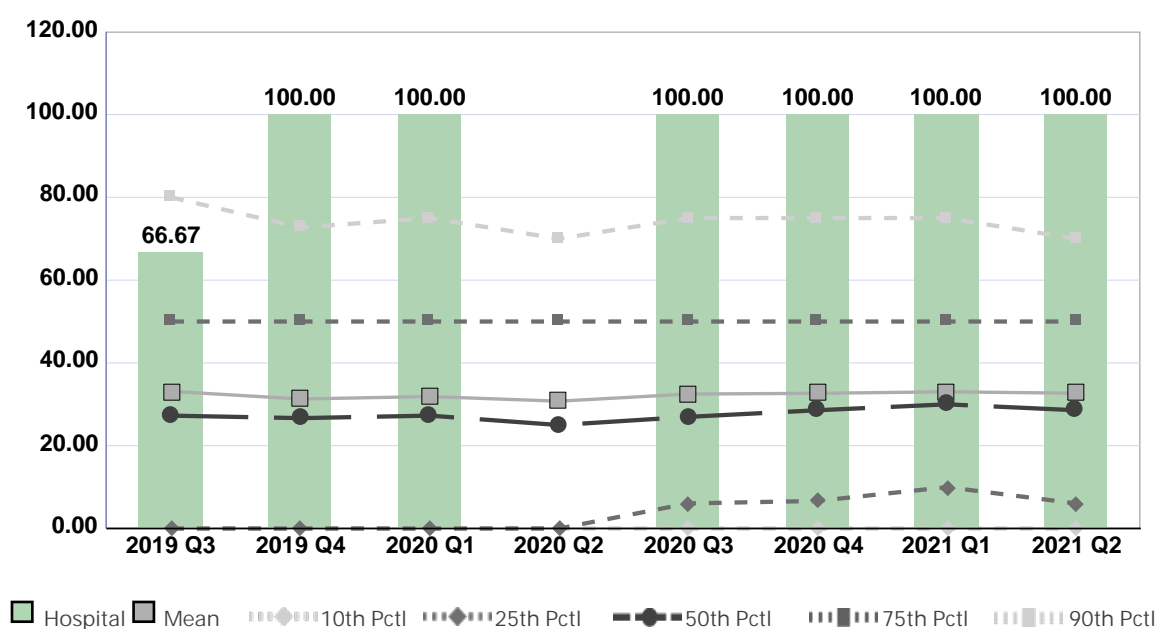
Peer Group: All Hospitals

Unit Type: Procedural Unit

Unit: Hyperbaric

Measure: Percent of Direct Care RNs with Specialty Nursing Certification

2021 Unit Goal=Maintain 75% or higher



Quarter	2019 Q3	2019 Q4	2020 Q1	2020 Q2	2020 Q3	2020 Q4	2021 Q1	2021 Q2	Average
Unit	66.67	100.00	100.00	No Data	100.00	100.00	100.00	100.00	95.24
Mean	33.13	31.29	31.88	30.76	32.48	32.66	33.04	32.68	32.24
Standard Deviation	30.66	29.64	29.30	29.03	29.55	28.96	28.71	28.58	29.30
10th Percentile	0.00	0.00	0.00	0.00	0.00	0.00	0.00	0.00	0.00
25th Percentile	0.00	0.00	0.00	0.00	6.07	6.67	10.00	6.07	3.60
50th Percentile (Median)	27.27	26.67	27.27	25.00	26.97	28.57	30.00	28.57	27.54
75th Percentile	50.00	50.00	50.00	50.00	50.00	50.00	50.00	50.00	50.00
90th Percentile	80.00	72.73	75.00	70.00	75.00	75.00	75.00	70.00	74.09
# Units	500	484	476	446	468	476	462	496	476

If the number of units or hospitals is less than five, comparison data are suppressed to maintain confidentiality. If the number of units or hospitals is less than 20, comparison data may vary substantially over the time period and should be used with caution. For additional information, please refer to NDNQI reference documents.

Phelps Memorial Hospital

Compared by: All Hospitals

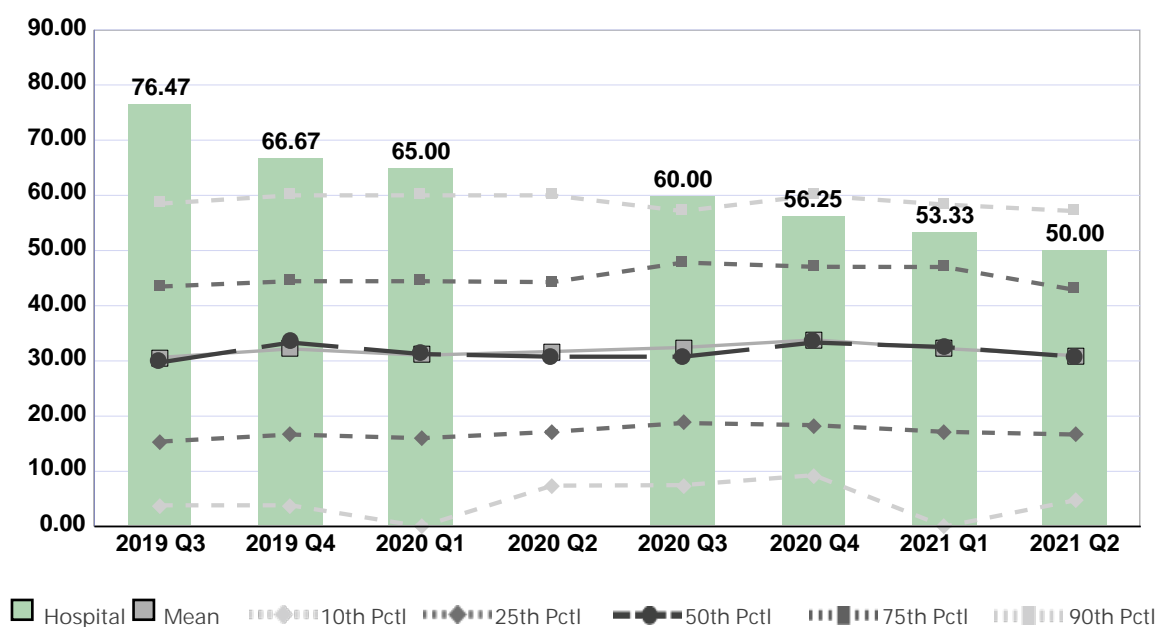
Peer Group: All Hospitals

Unit Type: OR-On call staff after hours

Unit: OR

Measure: Percent of Direct Care RNs with Specialty Nursing Certification

2021 Goal = 100% cert for eligible RNs



Quarter	2019 Q3	2019 Q4	2020 Q1	2020 Q2	2020 Q3	2020 Q4	2021 Q1	2021 Q2	Average
Unit	76.47	66.67	65.00	No Data	60.00	56.25	53.33	50.00	61.10
Mean	30.63	32.18	31.04	31.70	32.45	33.81	32.25	30.97	31.88
Standard Deviation	19.95	20.83	20.51	19.61	19.63	20.07	19.38	19.30	19.91
10th Percentile	3.85	3.85	0.00	7.41	7.50	9.30	0.00	4.76	4.58
25th Percentile	15.38	16.67	16.00	17.16	18.75	18.37	17.16	16.67	17.02
50th Percentile (Median)	29.73	33.33	31.25	30.77	30.77	33.33	32.52	30.77	31.56
75th Percentile	43.48	44.44	44.44	44.28	47.83	47.06	47.02	42.86	45.18
90th Percentile	58.49	60.00	60.00	60.00	57.14	60.00	58.33	57.14	58.89
# Units	223	218	191	188	194	186	196	195	199

If the number of units or hospitals is less than five, comparison data are suppressed to maintain confidentiality. If the number of units or hospitals is less than 20, comparison data may vary substantially over the time period and should be used with caution. For additional information, please refer to NDNQI reference documents.

Phelps Memorial Hospital

Compared by: All Hospitals

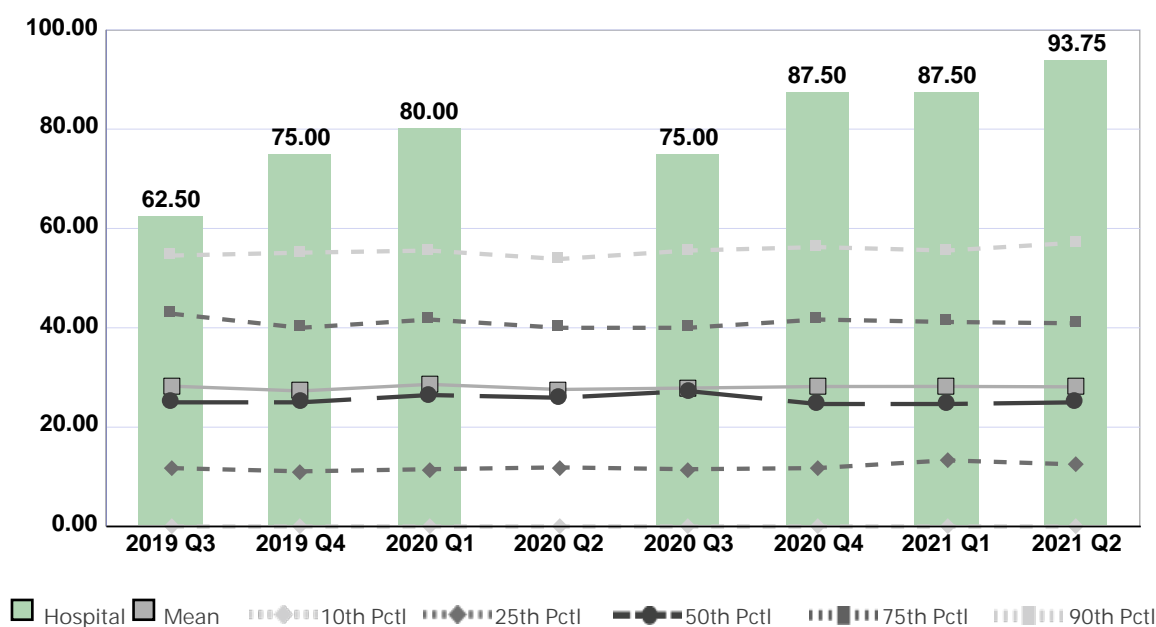
Peer Group: All Hospitals

Unit Type: Post-anesthesia care unit

Unit: PACU

Measure: Percent of Direct Care RNs with Specialty Nursing Certification

2021 Unit Goal=100% for all eligible RNs



Quarter	2019 Q3	2019 Q4	2020 Q1	2020 Q2	2020 Q3	2020 Q4	2021 Q1	2021 Q2	Average
Unit	62.50	75.00	80.00	No Data	75.00	87.50	87.50	93.75	80.18
Mean	28.26	27.29	28.62	27.59	27.87	28.18	28.20	28.12	28.02
Standard Deviation	21.06	20.76	20.83	20.21	20.42	20.17	20.11	20.59	20.52
10th Percentile	0.00	0.00	0.00	0.00	0.00	0.00	0.00	0.00	0.00
25th Percentile	11.76	11.11	11.54	11.90	11.54	11.76	13.33	12.50	11.93
50th Percentile (Median)	25.00	25.00	26.47	25.93	27.27	24.66	24.66	25.00	25.50
75th Percentile	42.86	40.00	41.67	40.00	40.00	41.67	41.18	40.91	41.03
90th Percentile	54.55	55.13	55.56	53.85	55.56	56.25	55.56	57.14	55.45
# Units	313	324	282	266	294	294	282	275	291

If the number of units or hospitals is less than five, comparison data are suppressed to maintain confidentiality. If the number of units or hospitals is less than 20, comparison data may vary substantially over the time period and should be used with caution. For additional information, please refer to NDNQI reference documents.

Phelps Memorial Hospital

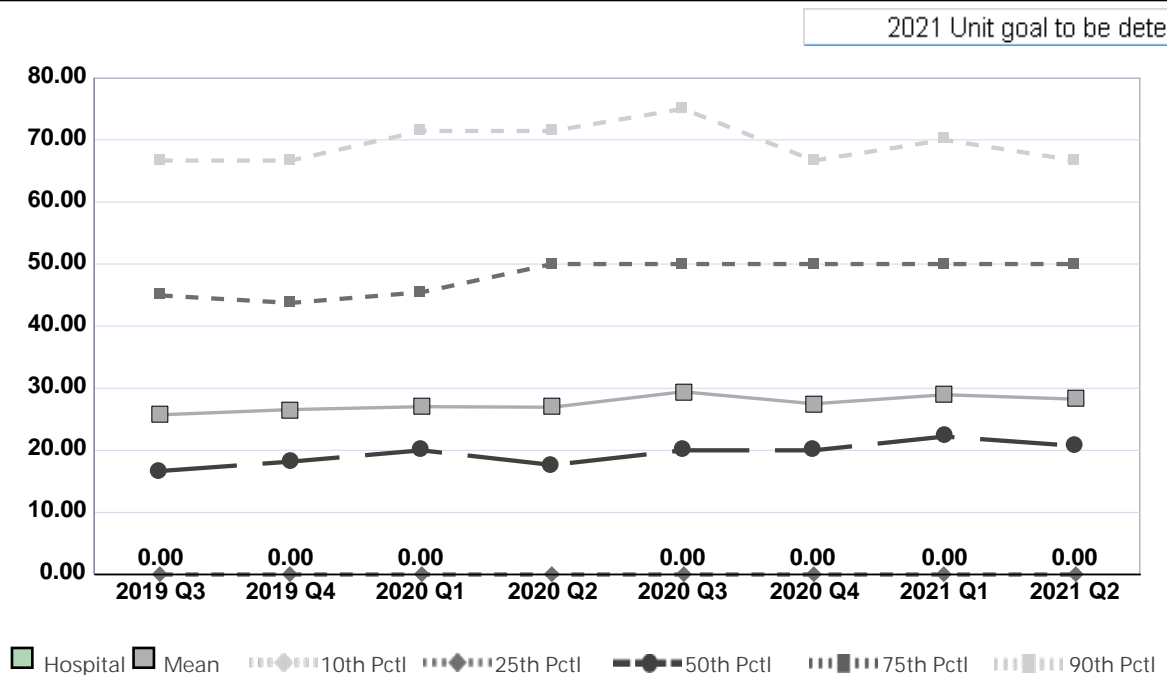
Compared by: All Hospitals

Peer Group: All Hospitals

Unit Type: Cardiac Services

Unit: Outpatient Cardiology

Measure: Percent of Direct Care RNs with Specialty Nursing Certification



Quarter	2019 Q3	2019 Q4	2020 Q1	2020 Q2	2020 Q3	2020 Q4	2021 Q1	2021 Q2	Average
Unit	0.00	0.00	0.00	No Data	0.00	0.00	0.00	0.00	0.00
Mean	25.72	26.56	27.03	26.94	29.43	27.50	28.96	28.24	27.55
Standard Deviation	29.10	28.36	28.67	29.14	30.60	28.67	29.28	28.94	29.10
10th Percentile	0.00	0.00	0.00	0.00	0.00	0.00	0.00	0.00	0.00
25th Percentile	0.00	0.00	0.00	0.00	0.00	0.00	0.00	0.00	0.00
50th Percentile (Median)	16.67	18.18	20.00	17.65	20.00	20.00	22.22	20.71	19.43
75th Percentile	44.95	43.74	45.45	50.00	50.00	50.00	50.00	50.00	48.02
90th Percentile	66.67	66.67	71.43	71.43	75.00	66.67	70.00	66.67	69.32
# Units	288	292	275	259	281	286	285	284	281

If the number of units or hospitals is less than five, comparison data are suppressed to maintain confidentiality. If the number of units or hospitals is less than 20, comparison data may vary substantially over the time period and should be used with caution. For additional information, please refer to NDNQI reference documents.

Phelps Memorial Hospital

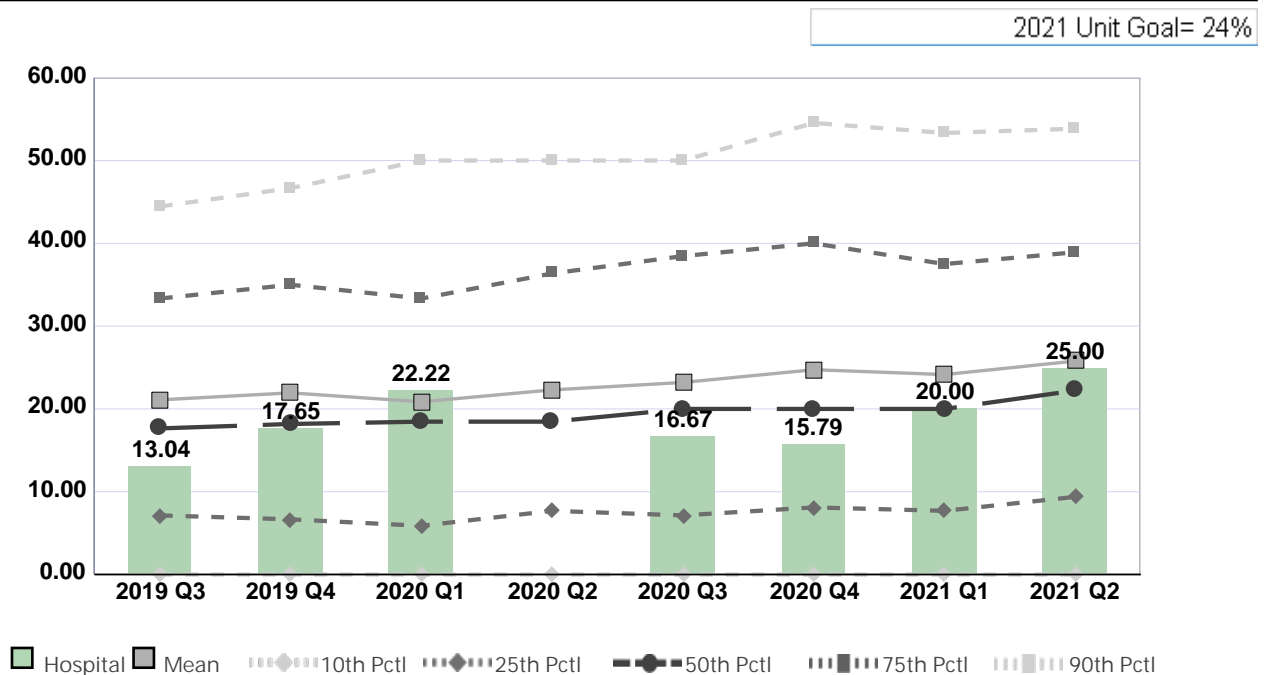
Compared by: All Hospitals

Peer Group: All Hospitals

Unit Type: Pre/Postoperative excludes Phase I

Unit: ASU

Measure: Percent of Direct Care RNs with Specialty Nursing Certification



Quarter	2019 Q3	2019 Q4	2020 Q1	2020 Q2	2020 Q3	2020 Q4	2021 Q1	2021 Q2	Average
Unit	13.04	17.65	22.22	No Data	16.67	15.79	20.00	25.00	18.62
Mean	21.09	21.94	20.86	22.30	23.20	24.74	24.15	25.78	23.01
Standard Deviation	17.60	19.36	17.88	19.17	18.92	20.37	19.90	19.85	19.13
10th Percentile	0.00	0.00	0.00	0.00	0.00	0.00	0.00	0.00	0.00
25th Percentile	7.14	6.67	5.88	7.69	7.14	8.11	7.69	9.38	7.46
50th Percentile (Median)	17.65	18.18	18.47	18.47	20.00	20.00	20.00	22.22	19.37
75th Percentile	33.33	35.00	33.33	36.36	38.46	40.00	37.50	38.93	36.61
90th Percentile	44.44	46.67	50.00	50.00	50.00	54.55	53.33	53.85	50.35
# Units	179	179	168	148	166	173	171	156	168

If the number of units or hospitals is less than five, comparison data are suppressed to maintain confidentiality. If the number of units or hospitals is less than 20, comparison data may vary substantially over the time period and should be used with caution. For additional information, please refer to NDNQI reference documents.

Phelps Memorial Hospital

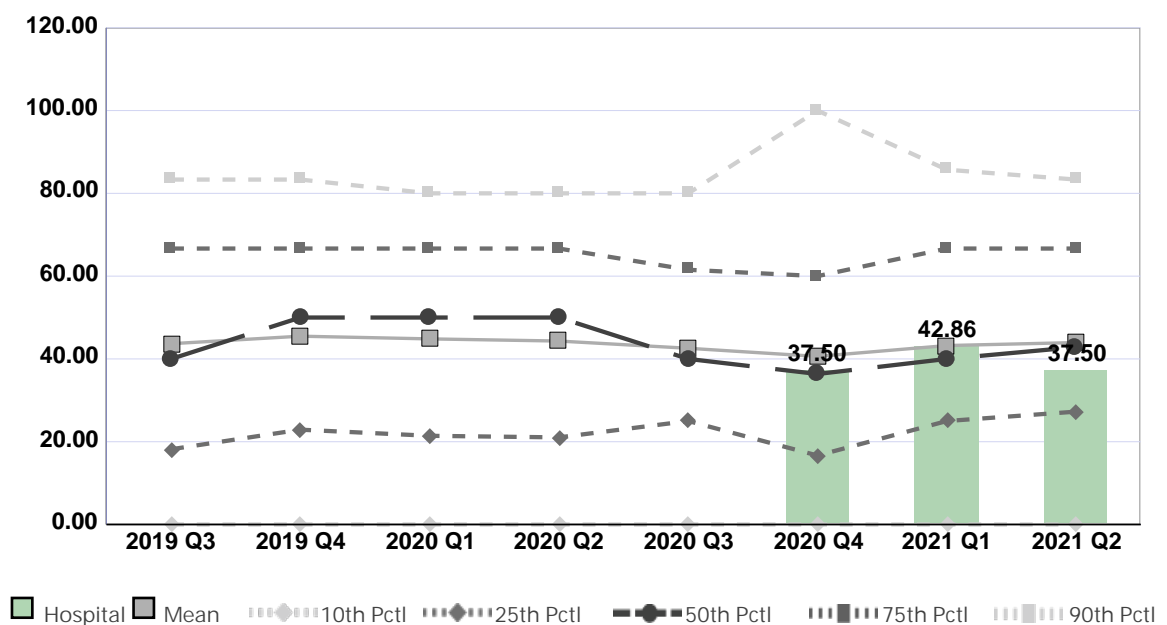
Compared by: All Hospitals

Peer Group: All Hospitals

Unit Type: Vascular Access RNs

Unit: Vascular Access Team

Measure: Percent of Direct Care RNs with Specialty Nursing Certification



Quarter	2019 Q3	2019 Q4	2020 Q1	2020 Q2	2020 Q3	2020 Q4	2021 Q1	2021 Q2	Average
Unit	No Data	No Data	No Data	No Data	No Data	37.50	42.86	37.50	39.29
Mean	43.68	45.49	44.84	44.32	42.58	40.61	43.23	43.96	43.59
Standard Deviation	29.17	28.38	27.95	28.80	30.16	31.96	31.08	29.51	29.62
10th Percentile	0.00	0.00	0.00	0.00	0.00	0.00	0.00	0.00	0.00
25th Percentile	18.18	22.92	21.43	21.05	25.00	16.67	25.00	27.27	22.19
50th Percentile (Median)	40.00	50.00	50.00	50.00	40.00	36.36	40.00	42.86	43.65
75th Percentile	66.67	66.67	66.67	66.67	61.54	60.00	66.67	66.67	65.19
90th Percentile	83.33	83.33	80.00	80.00	80.00	100.00	85.71	83.33	84.46
# Units	65	64	58	55	62	61	61	61	61

If the number of units or hospitals is less than five, comparison data are suppressed to maintain confidentiality. If the number of units or hospitals is less than 20, comparison data may vary substantially over the time period and should be used with caution. For additional information, please refer to NDNQI reference documents.

Phelps Memorial Hospital

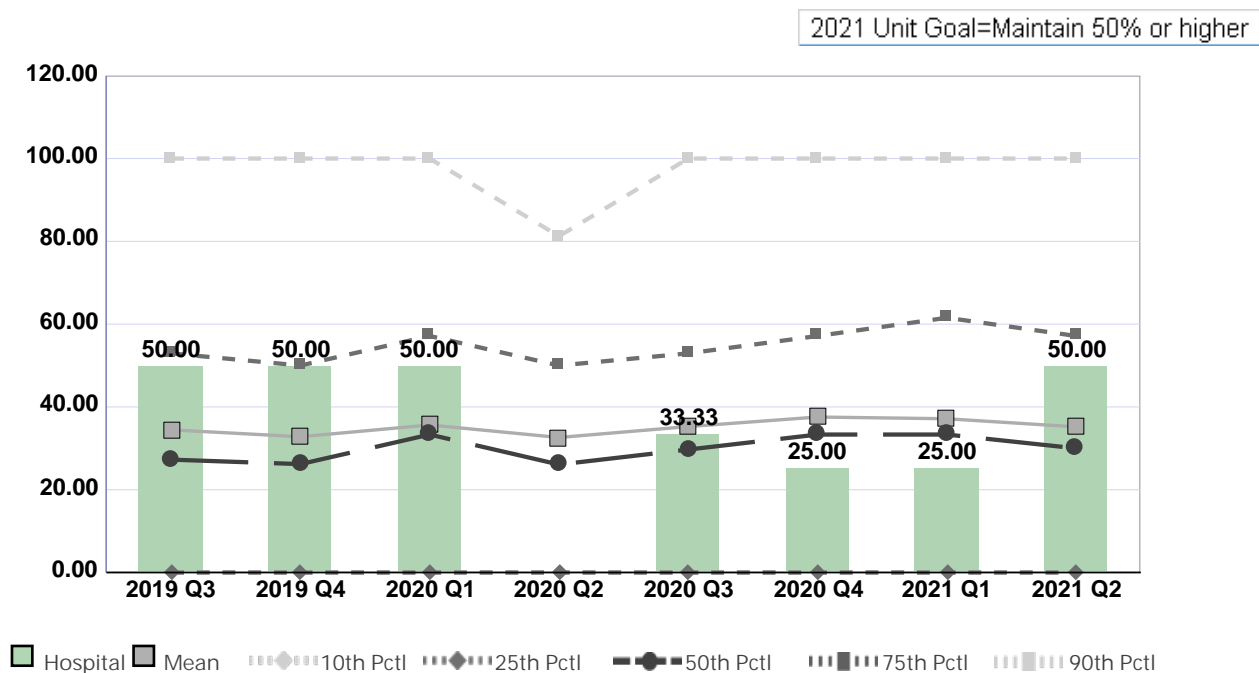
Compared by: All Hospitals

Peer Group: All Hospitals

Unit Type: Specialty Care

Unit: Pain Management

Measure: Percent of Direct Care RNs with Specialty Nursing Certification



Quarter	2019 Q3	2019 Q4	2020 Q1	2020 Q2	2020 Q3	2020 Q4	2021 Q1	2021 Q2	Average
Unit	50.00	50.00	50.00	No Data	33.33	25.00	25.00	50.00	40.48
Mean	34.47	32.80	35.65	32.62	35.26	37.56	37.15	35.19	35.09
Standard Deviation	33.62	32.83	33.28	31.76	33.73	34.23	34.90	34.73	33.64
10th Percentile	0.00	0.00	0.00	0.00	0.00	0.00	0.00	0.00	0.00
25th Percentile	0.00	0.00	0.00	0.00	0.00	0.00	0.00	0.00	0.00
50th Percentile (Median)	27.27	26.19	33.33	26.09	29.71	33.33	33.33	30.00	29.91
75th Percentile	52.94	50.00	57.14	50.00	52.94	57.14	61.54	57.14	54.86
90th Percentile	100.00	100.00	100.00	81.25	100.00	100.00	100.00	100.00	97.66
# Units	431	437	431	435	494	463	444	495	454

If the number of units or hospitals is less than five, comparison data are suppressed to maintain confidentiality. If the number of units or hospitals is less than 20, comparison data may vary substantially over the time period and should be used with caution. For additional information, please refer to NDNQI reference documents.