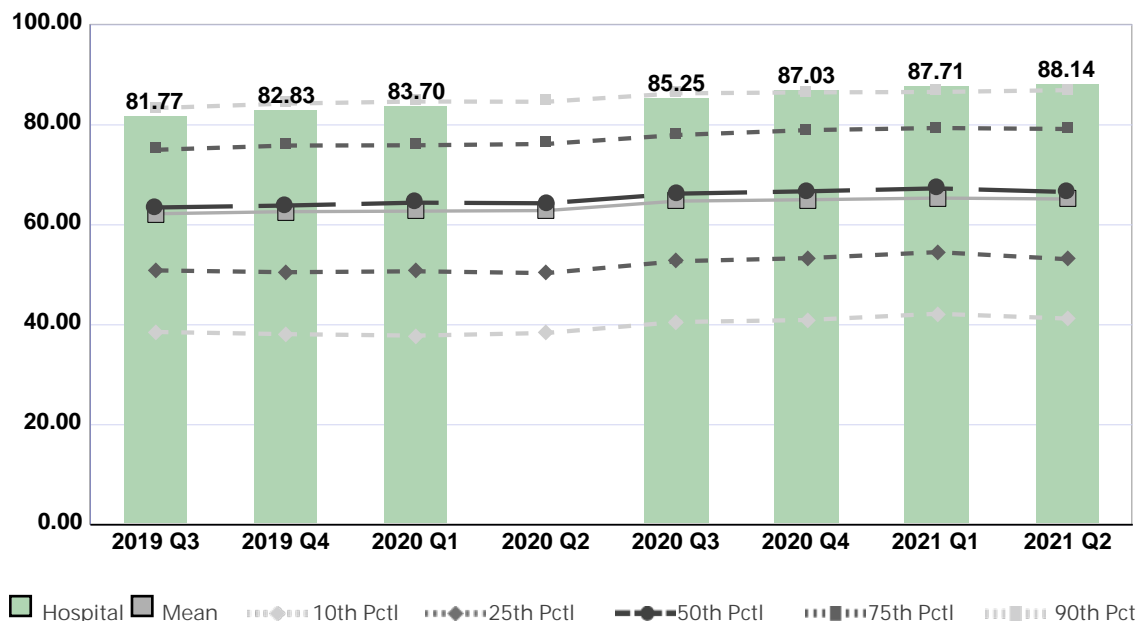


Phelps Memorial Hospital

Compared by: All Hospitals

Peer Group: All Hospitals

Measure: Percent of Direct Care RNs with BSN, MSN, or PhD



Metrics	2019 Q3	2019 Q4	2020 Q1	2020 Q2	2020 Q3	2020 Q4	2021 Q1	2021 Q2	Average
Hospital-Unadjusted Measure	81.77	82.83	83.70	No Data	85.25	87.03	87.71	88.14	85.21
Mean	62.23	62.64	62.75	62.86	64.76	65.03	65.36	65.18	63.85
Standard Deviation	17.26	17.36	17.65	17.74	17.20	17.66	17.43	17.89	17.52
10th Percentile	38.57	38.14	37.84	38.37	40.56	40.97	42.22	41.25	39.74
25th Percentile	50.88	50.53	50.71	50.35	52.73	53.35	54.55	53.13	52.03
50th Percentile (Median)	63.48	63.87	64.44	64.32	66.24	66.71	67.30	66.58	65.37
75th Percentile	75.02	75.87	75.93	76.19	77.98	78.96	79.38	79.19	77.31
90th Percentile	83.37	84.27	84.69	84.63	86.32	86.51	86.59	86.96	85.42
# Hospitals	701	699	615	601	615	605	594	591	627.63

If the number of hospitals is less than five, comparison data are suppressed to maintain confidentiality. If the number of hospitals is less than 20, comparison data may vary substantially over the time period and should be used with caution. For additional information, please refer to NDNQI reference documents.

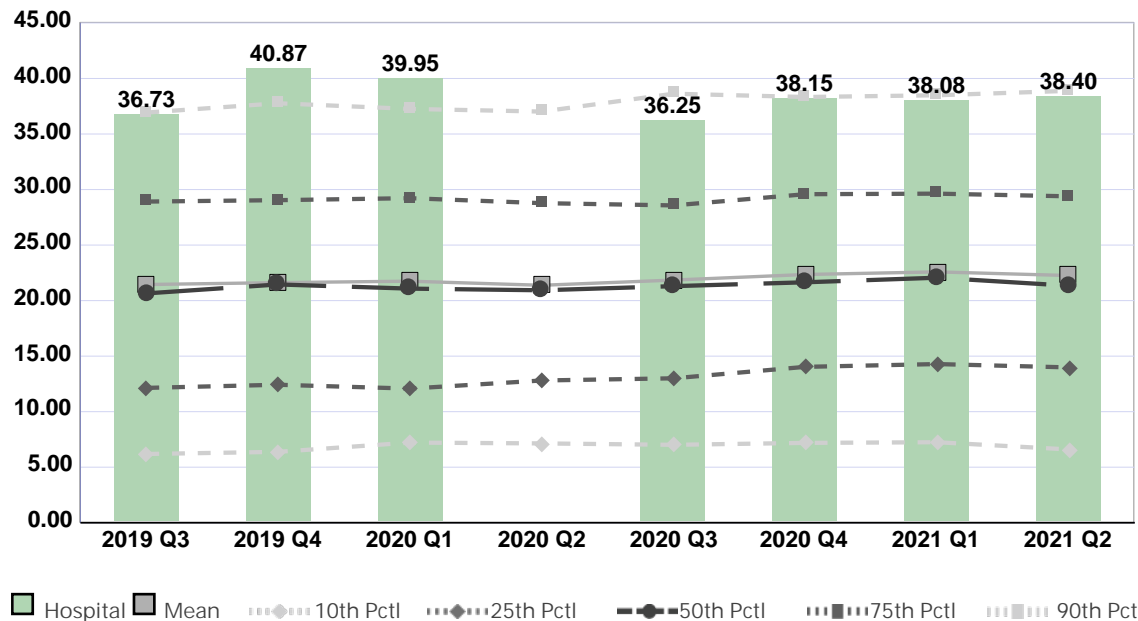


Phelps Memorial Hospital

Compared by: All Hospitals

Peer Group: All Hospitals

Measure: Percent of Direct Care RNs with Specialty Nursing Certification



Metrics	2019 Q3	2019 Q4	2020 Q1	2020 Q2	2020 Q3	2020 Q4	2021 Q1	2021 Q2	Average
Hospital-Unadjusted Measure	36.73	40.87	39.95	No Data	36.25	38.15	38.08	38.40	38.35
Mean	21.45	21.62	21.75	21.38	21.85	22.35	22.59	22.26	21.91
Standard Deviation	12.23	11.83	12.10	11.49	12.10	12.13	11.93	12.18	12.00
10th Percentile	6.19	6.38	7.22	7.14	7.01	7.19	7.25	6.60	6.87
25th Percentile	12.14	12.42	12.08	12.81	13.00	14.04	14.29	13.99	13.09
50th Percentile (Median)	20.65	21.46	21.08	20.93	21.30	21.65	22.06	21.34	21.31
75th Percentile	28.92	29.04	29.22	28.78	28.57	29.58	29.63	29.39	29.14
90th Percentile	36.93	37.77	37.26	37.02	38.63	38.33	38.49	38.89	37.92
# Hospitals	680	684	597	581	589	582	570	569	606.50

If the number of hospitals is less than five, comparison data are suppressed to maintain confidentiality. If the number of hospitals is less than 20, comparison data may vary substantially over the time period and should be used with caution. For additional information, please refer to NDNQI reference documents.