

Phelps Memorial Hospital

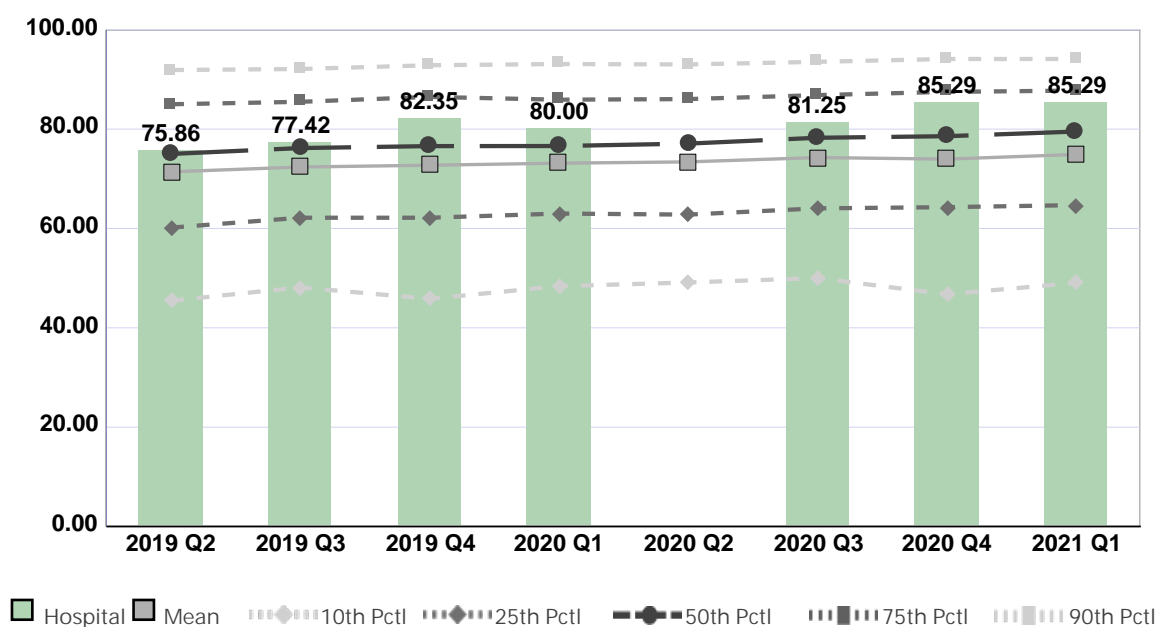
Compared by: All Hospitals

Peer Group: All Hospitals

Unit Type: Adult Critical Care

Unit: Critical Care

Measure: Percent of Direct Care RNs with BSN, MSN, or PhD



Quarter	2019 Q2	2019 Q3	2019 Q4	2020 Q1	2020 Q2	2020 Q3	2020 Q4	2021 Q1	Average
Unit	75.86	77.42	82.35	80.00	No Data	81.25	85.29	85.29	81.07
Mean	71.40	72.37	72.73	73.14	73.40	74.28	73.96	74.89	73.27
Standard Deviation	17.94	17.53	17.96	17.43	17.29	17.56	18.90	17.68	17.79
10th Percentile	45.45	48.15	45.83	48.39	49.12	50.00	46.75	49.06	47.84
25th Percentile	60.17	62.16	62.16	63.00	62.79	64.05	64.29	64.71	62.92
50th Percentile (Median)	75.00	76.19	76.58	76.60	77.08	78.26	78.57	79.52	77.22
75th Percentile	85.00	85.50	86.49	85.92	86.05	86.84	87.50	87.76	86.38
90th Percentile	91.89	92.11	92.86	93.10	93.02	93.55	94.12	94.12	93.10
# Units	916	926	898	792	745	804	782	737	825

If the number of units or hospitals is less than five, comparison data are suppressed to maintain confidentiality. If the number of units or hospitals is less than 20, comparison data may vary substantially over the time period and should be used with caution. For additional information, please refer to NDNQI reference documents.

Phelps Memorial Hospital

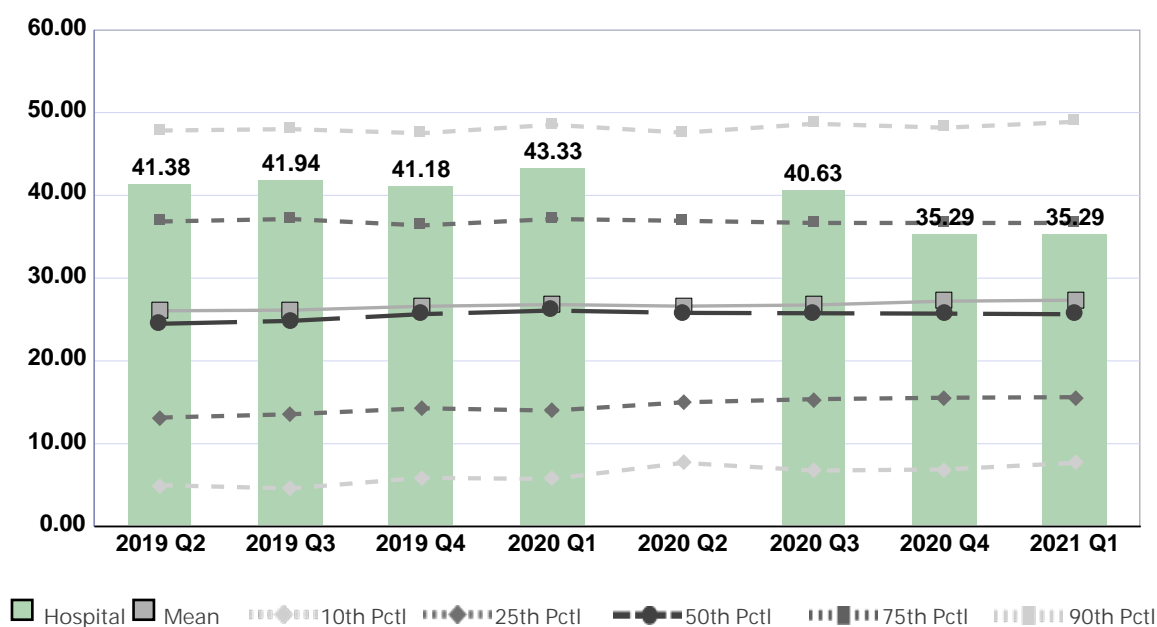
Compared by: All Hospitals

Peer Group: All Hospitals

Unit Type: Adult Critical Care

Unit: Critical Care

Measure: Percent of Direct Care RNs with Specialty Nursing Certification



Quarter	2019 Q2	2019 Q3	2019 Q4	2020 Q1	2020 Q2	2020 Q3	2020 Q4	2021 Q1	Average
Unit	41.38	41.94	41.18	43.33	No Data	40.63	35.29	35.29	39.86
Mean	26.05	26.13	26.60	26.81	26.62	26.76	27.22	27.34	26.69
Standard Deviation	16.52	16.85	16.35	16.57	15.62	15.84	16.03	16.10	16.23
10th Percentile	5.00	4.60	5.88	5.74	7.69	6.76	6.90	7.69	6.28
25th Percentile	13.16	13.56	14.29	14.00	15.00	15.38	15.56	15.63	14.57
50th Percentile (Median)	24.49	24.84	25.65	26.09	25.81	25.76	25.71	25.64	25.50
75th Percentile	36.84	37.14	36.36	37.14	36.92	36.67	36.67	36.67	36.80
90th Percentile	47.83	48.00	47.50	48.53	47.56	48.65	48.17	48.89	48.14
# Units	879	890	878	770	710	766	749	702	793

If the number of units or hospitals is less than five, comparison data are suppressed to maintain confidentiality. If the number of units or hospitals is less than 20, comparison data may vary substantially over the time period and should be used with caution. For additional information, please refer to NDNQI reference documents.

Phelps Memorial Hospital

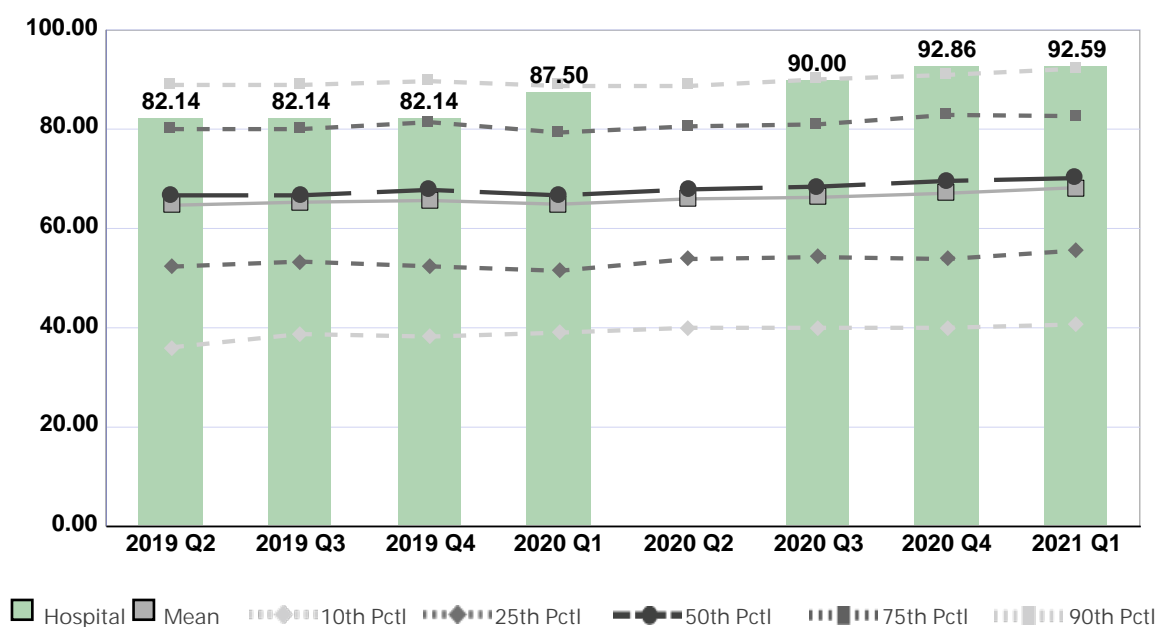
Compared by: All Hospitals

Peer Group: All Hospitals

Unit Type: Adult Step Down

Unit: Intermediate Care (5 South)

Measure: Percent of Direct Care RNs with BSN, MSN, or PhD



Quarter	2019 Q2	2019 Q3	2019 Q4	2020 Q1	2020 Q2	2020 Q3	2020 Q4	2021 Q1	Average
Unit	82.14	82.14	82.14	87.50	No Data	90.00	92.86	92.59	87.05
Mean	64.67	65.28	65.63	64.88	65.95	66.27	67.09	68.21	66.00
Standard Deviation	19.70	18.87	19.44	18.99	18.95	19.50	19.55	19.24	19.28
10th Percentile	36.06	38.74	38.24	39.02	40.00	40.00	40.00	40.69	39.09
25th Percentile	52.31	53.33	52.38	51.47	53.85	54.24	53.85	55.56	53.37
50th Percentile (Median)	66.67	66.67	67.77	66.67	67.86	68.42	69.57	70.14	67.97
75th Percentile	80.00	80.00	81.40	79.31	80.56	80.95	82.86	82.62	80.96
90th Percentile	88.89	88.89	89.66	88.68	88.68	90.00	90.91	92.17	89.73
# Units	610	630	614	577	537	554	559	500	573

If the number of units or hospitals is less than five, comparison data are suppressed to maintain confidentiality. If the number of units or hospitals is less than 20, comparison data may vary substantially over the time period and should be used with caution. For additional information, please refer to NDNQI reference documents.

Phelps Memorial Hospital

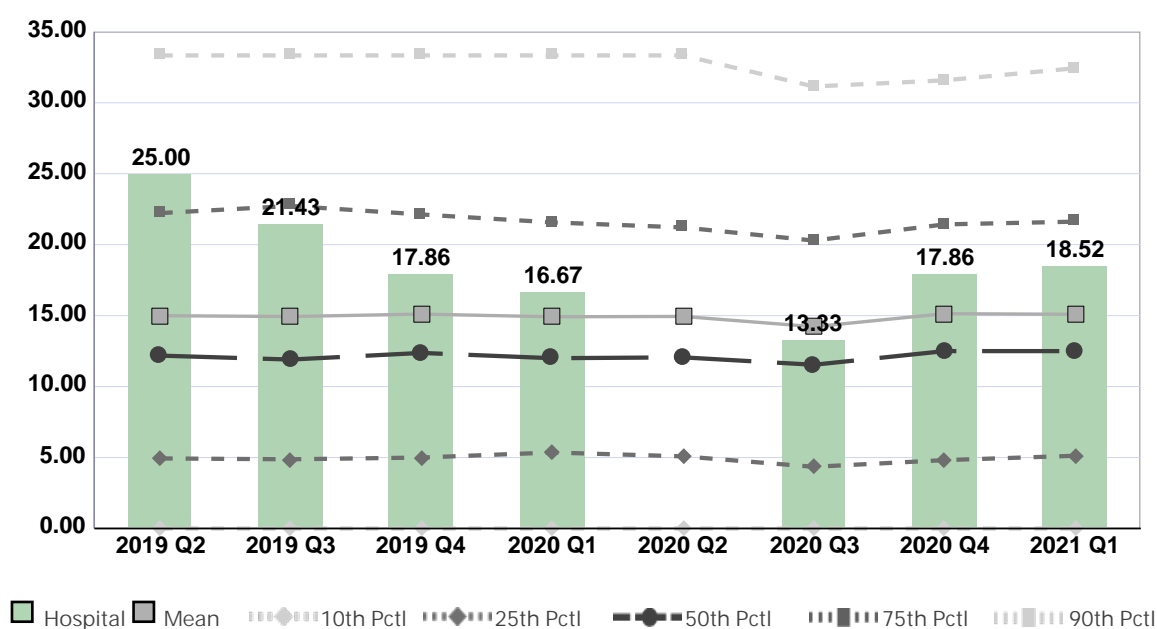
Compared by: All Hospitals

Peer Group: All Hospitals

Unit Type: Adult Step Down

Unit: Intermediate Care (5 South)

Measure: Percent of Direct Care RNs with Specialty Nursing Certification



Quarter	2019 Q2	2019 Q3	2019 Q4	2020 Q1	2020 Q2	2020 Q3	2020 Q4	2021 Q1	Average
Unit	25.00	21.43	17.86	16.67	No Data	13.33	17.86	18.52	18.67
Mean	15.00	14.94	15.11	14.92	14.94	14.22	15.14	15.09	14.92
Standard Deviation	13.05	13.04	12.79	12.71	12.80	12.96	13.53	12.82	12.96
10th Percentile	0.00	0.00	0.00	0.00	0.00	0.00	0.00	0.00	0.00
25th Percentile	4.94	4.88	5.00	5.36	5.08	4.35	4.82	5.13	4.94
50th Percentile (Median)	12.18	11.90	12.37	12.00	12.06	11.54	12.50	12.50	12.13
75th Percentile	22.22	22.73	22.13	21.57	21.21	20.29	21.43	21.62	21.65
90th Percentile	33.33	33.33	33.33	33.33	33.33	31.14	31.58	32.43	32.73
# Units	588	607	600	563	522	530	532	478	553

If the number of units or hospitals is less than five, comparison data are suppressed to maintain confidentiality. If the number of units or hospitals is less than 20, comparison data may vary substantially over the time period and should be used with caution. For additional information, please refer to NDNQI reference documents.



Phelps Memorial Hospital

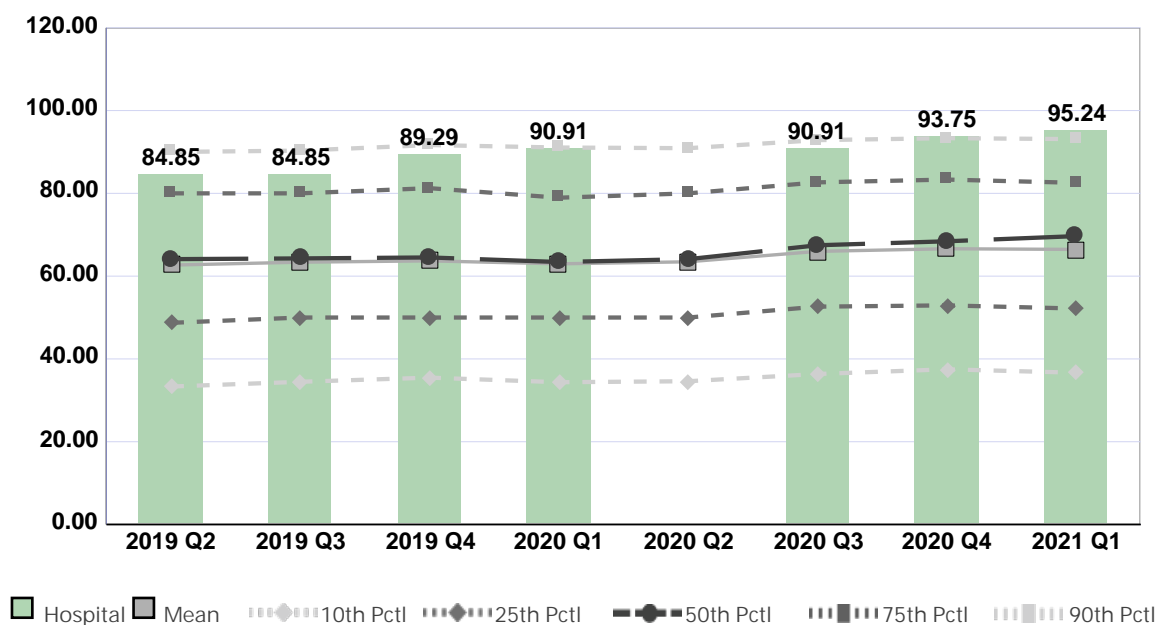
Compared by: All Hospitals

Peer Group: All Hospitals

Unit Type: Adult Medical

Unit: Medicine (5N)

Measure: Percent of Direct Care RNs with BSN, MSN, or PhD



Quarter	2019 Q2	2019 Q3	2019 Q4	2020 Q1	2020 Q2	2020 Q3	2020 Q4	2021 Q1	Average
Unit	84.85	84.85	89.29	90.91	No Data	90.91	93.75	95.24	89.97
Mean	62.67	63.37	63.69	62.98	63.47	65.99	66.62	66.46	64.41
Standard Deviation	21.79	21.36	21.77	21.28	20.84	20.62	20.98	20.98	21.20
10th Percentile	33.33	34.48	35.48	34.38	34.62	36.36	37.50	36.67	35.35
25th Percentile	48.72	50.00	50.00	50.00	50.00	52.63	52.94	52.17	50.81
50th Percentile (Median)	64.10	64.29	64.52	63.41	64.10	67.46	68.42	69.67	65.75
75th Percentile	80.00	80.00	81.25	78.95	80.00	82.65	83.33	82.54	81.09
90th Percentile	90.00	90.32	91.67	91.07	90.91	92.86	93.33	93.10	91.66
# Units	836	841	843	741	711	784	727	714	775

If the number of units or hospitals is less than five, comparison data are suppressed to maintain confidentiality. If the number of units or hospitals is less than 20, comparison data may vary substantially over the time period and should be used with caution. For additional information, please refer to NDNQI reference documents.

Phelps Memorial Hospital

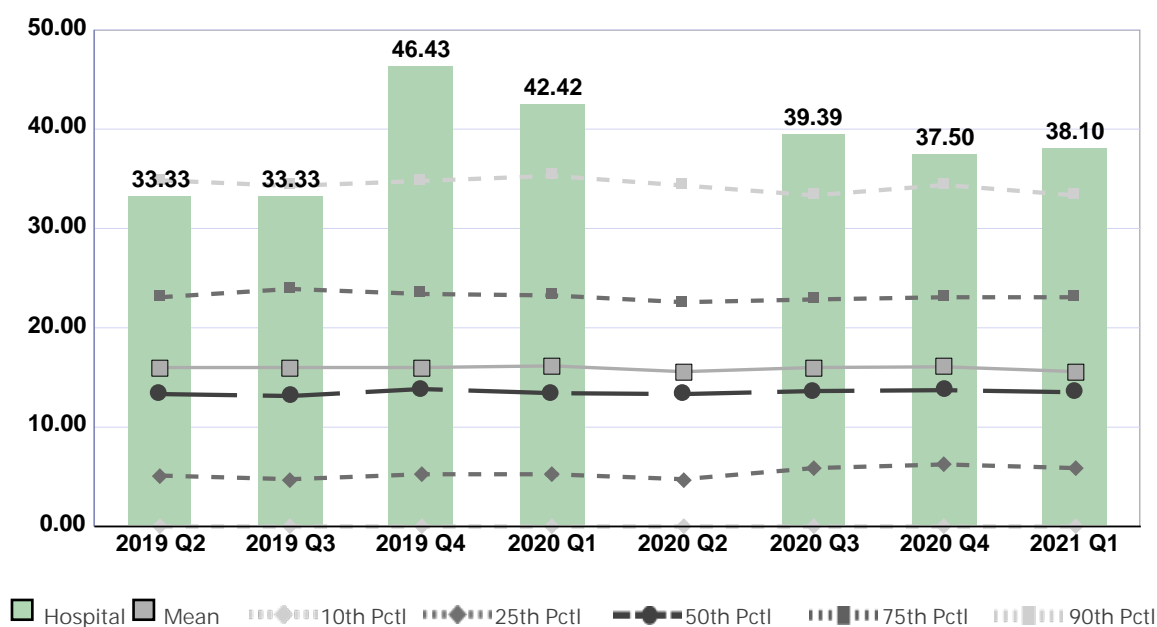
Compared by: All Hospitals

Peer Group: All Hospitals

Unit Type: Adult Medical

Unit: Medicine (5N)

Measure: Percent of Direct Care RNs with Specialty Nursing Certification



Quarter	2019 Q2	2019 Q3	2019 Q4	2020 Q1	2020 Q2	2020 Q3	2020 Q4	2021 Q1	Average
Unit	33.33	33.33	46.43	42.42	No Data	39.39	37.50	38.10	38.64
Mean	16.00	16.01	16.01	16.17	15.59	16.01	16.08	15.60	15.93
Standard Deviation	13.59	14.12	13.62	13.72	13.03	13.14	13.05	12.39	13.33
10th Percentile	0.00	0.00	0.00	0.00	0.00	0.00	0.00	0.00	0.00
25th Percentile	5.13	4.76	5.26	5.26	4.76	5.88	6.25	5.88	5.40
50th Percentile (Median)	13.33	13.14	13.84	13.42	13.33	13.64	13.73	13.51	13.49
75th Percentile	23.08	23.91	23.40	23.26	22.58	22.86	23.08	23.08	23.16
90th Percentile	34.85	34.29	34.78	35.29	34.33	33.33	34.38	33.33	34.32
# Units	795	806	830	724	678	753	711	691	749

If the number of units or hospitals is less than five, comparison data are suppressed to maintain confidentiality. If the number of units or hospitals is less than 20, comparison data may vary substantially over the time period and should be used with caution. For additional information, please refer to NDNQI reference documents.

Phelps Memorial Hospital

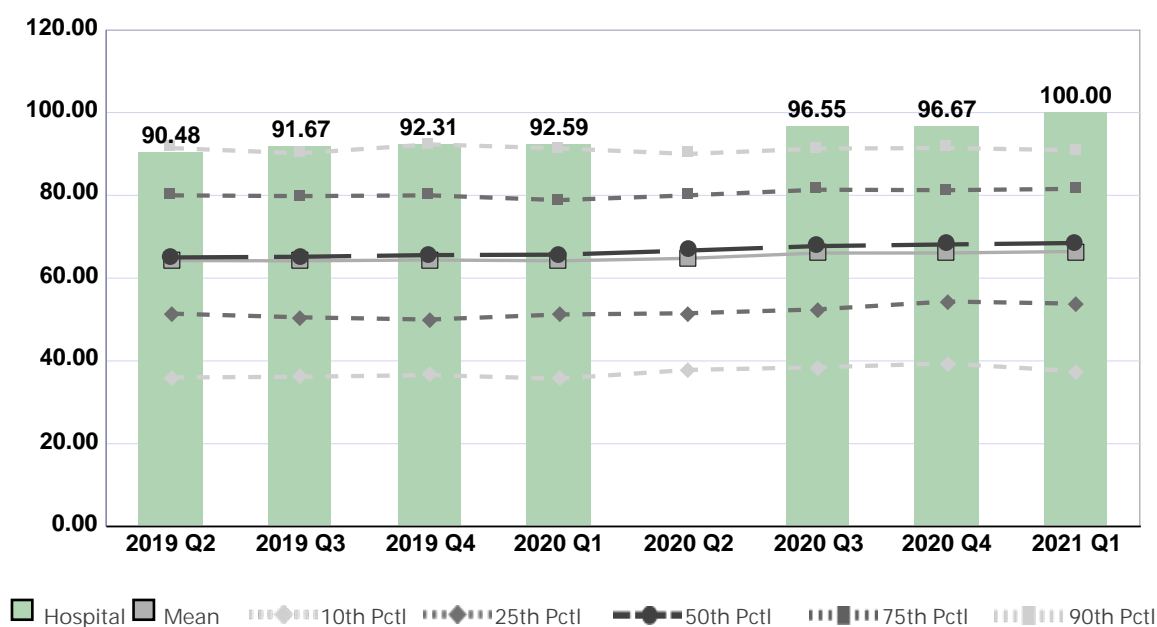
Compared by: All Hospitals

Peer Group: All Hospitals

Unit Type: Adult Surgical

Unit: Ortho (2C)

Measure: Percent of Direct Care RNs with BSN, MSN, or PhD



Quarter	2019 Q2	2019 Q3	2019 Q4	2020 Q1	2020 Q2	2020 Q3	2020 Q4	2021 Q1	Average
Unit	90.48	91.67	92.31	92.59	No Data	96.55	96.67	100.00	94.32
Mean	64.25	64.19	64.39	64.19	64.78	66.07	66.08	66.45	65.05
Standard Deviation	21.36	21.02	21.46	21.24	20.25	20.28	20.81	20.51	20.87
10th Percentile	36.00	36.18	36.59	35.71	37.84	38.46	39.39	37.50	37.21
25th Percentile	51.43	50.53	50.00	51.22	51.52	52.45	54.36	53.85	51.92
50th Percentile (Median)	65.00	65.17	65.57	65.67	66.67	67.74	68.13	68.50	66.56
75th Percentile	80.00	79.81	80.00	78.85	80.00	81.37	81.25	81.58	80.36
90th Percentile	91.43	90.16	92.31	91.37	90.00	91.30	91.43	90.91	91.11
# Units	567	560	548	490	472	496	456	444	504

If the number of units or hospitals is less than five, comparison data are suppressed to maintain confidentiality. If the number of units or hospitals is less than 20, comparison data may vary substantially over the time period and should be used with caution. For additional information, please refer to NDNQI reference documents.



Phelps Memorial Hospital

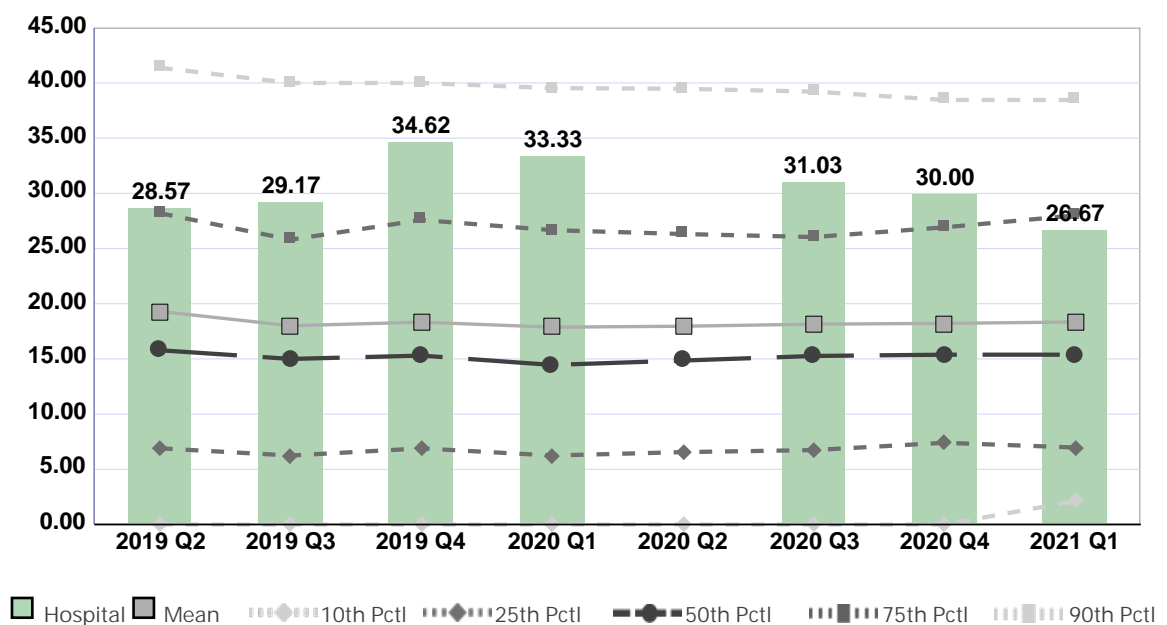
Compared by: All Hospitals

Peer Group: All Hospitals

Unit Type: Adult Surgical

Unit: Ortho (2C)

Measure: Percent of Direct Care RNs with Specialty Nursing Certification



Quarter	2019 Q2	2019 Q3	2019 Q4	2020 Q1	2020 Q2	2020 Q3	2020 Q4	2021 Q1	Average
Unit	28.57	29.17	34.62	33.33	No Data	31.03	30.00	26.67	30.48
Mean	19.30	18.01	18.33	17.88	17.96	18.15	18.22	18.34	18.28
Standard Deviation	16.60	15.30	14.91	14.80	14.67	15.28	15.01	14.68	15.16
10th Percentile	0.00	0.00	0.00	0.00	0.00	0.00	0.00	2.13	0.27
25th Percentile	6.90	6.25	6.90	6.25	6.56	6.74	7.41	6.98	6.75
50th Percentile (Median)	15.79	15.00	15.30	14.46	14.85	15.27	15.38	15.38	15.18
75th Percentile	28.21	25.81	27.59	26.67	26.32	26.04	26.92	28.00	26.94
90th Percentile	41.38	40.00	40.00	39.53	39.47	39.22	38.46	38.46	39.57
# Units	544	538	536	477	452	472	437	427	485

If the number of units or hospitals is less than five, comparison data are suppressed to maintain confidentiality. If the number of units or hospitals is less than 20, comparison data may vary substantially over the time period and should be used with caution. For additional information, please refer to NDNQI reference documents.

Phelps Memorial Hospital

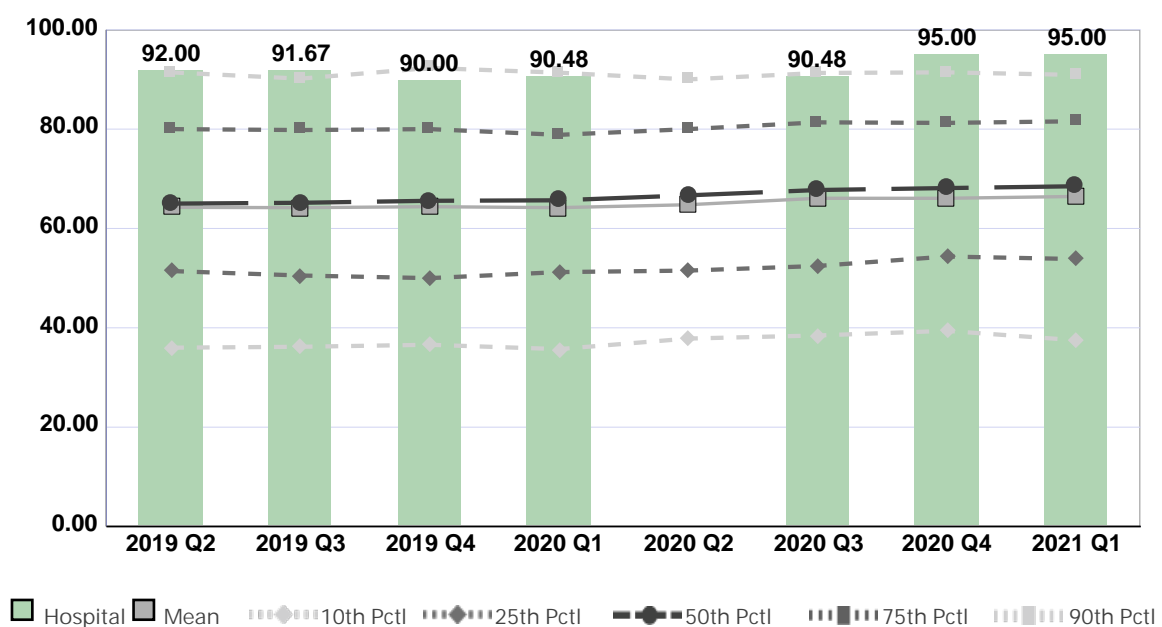
Compared by: All Hospitals

Peer Group: All Hospitals

Unit Type: Adult Surgical

Unit: Surgery -3 North

Measure: Percent of Direct Care RNs with BSN, MSN, or PhD



Quarter	2019 Q2	2019 Q3	2019 Q4	2020 Q1	2020 Q2	2020 Q3	2020 Q4	2021 Q1	Average
Unit	92.00	91.67	90.00	90.48	No Data	90.48	95.00	95.00	92.09
Mean	64.25	64.19	64.39	64.19	64.78	66.07	66.08	66.45	65.05
Standard Deviation	21.36	21.02	21.46	21.24	20.25	20.28	20.81	20.51	20.87
10th Percentile	36.00	36.18	36.59	35.71	37.84	38.46	39.39	37.50	37.21
25th Percentile	51.43	50.53	50.00	51.22	51.52	52.45	54.36	53.85	51.92
50th Percentile (Median)	65.00	65.17	65.57	65.67	66.67	67.74	68.13	68.50	66.56
75th Percentile	80.00	79.81	80.00	78.85	80.00	81.37	81.25	81.58	80.36
90th Percentile	91.43	90.16	92.31	91.37	90.00	91.30	91.43	90.91	91.11
# Units	567	560	548	490	472	496	456	444	504

If the number of units or hospitals is less than five, comparison data are suppressed to maintain confidentiality. If the number of units or hospitals is less than 20, comparison data may vary substantially over the time period and should be used with caution. For additional information, please refer to NDNQI reference documents.

Phelps Memorial Hospital

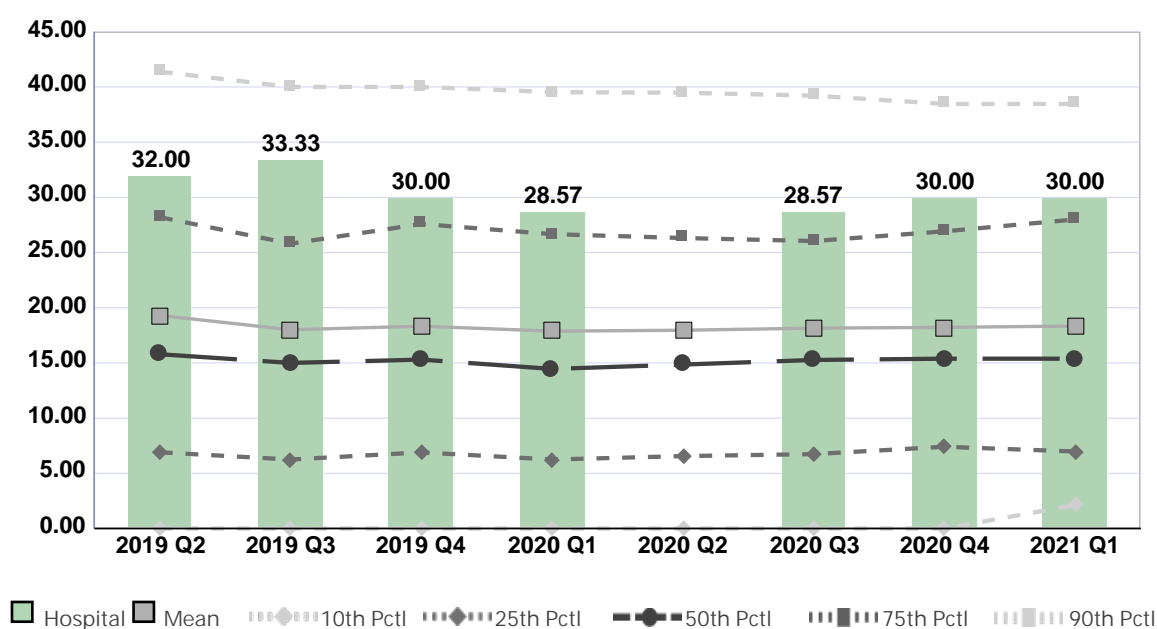
Compared by: All Hospitals

Peer Group: All Hospitals

Unit Type: Adult Surgical

Unit: Surgery -3 North

Measure: Percent of Direct Care RNs with Specialty Nursing Certification



Quarter	2019 Q2	2019 Q3	2019 Q4	2020 Q1	2020 Q2	2020 Q3	2020 Q4	2021 Q1	Average
Unit	32.00	33.33	30.00	28.57	No Data	28.57	30.00	30.00	30.35
Mean	19.30	18.01	18.33	17.88	17.96	18.15	18.22	18.34	18.28
Standard Deviation	16.60	15.30	14.91	14.80	14.67	15.28	15.01	14.68	15.16
10th Percentile	0.00	0.00	0.00	0.00	0.00	0.00	0.00	2.13	0.27
25th Percentile	6.90	6.25	6.90	6.25	6.56	6.74	7.41	6.98	6.75
50th Percentile (Median)	15.79	15.00	15.30	14.46	14.85	15.27	15.38	15.38	15.18
75th Percentile	28.21	25.81	27.59	26.67	26.32	26.04	26.92	28.00	26.94
90th Percentile	41.38	40.00	40.00	39.53	39.47	39.22	38.46	38.46	39.57
# Units	544	538	536	477	452	472	437	427	485

If the number of units or hospitals is less than five, comparison data are suppressed to maintain confidentiality. If the number of units or hospitals is less than 20, comparison data may vary substantially over the time period and should be used with caution. For additional information, please refer to NDNQI reference documents.

Phelps Memorial Hospital

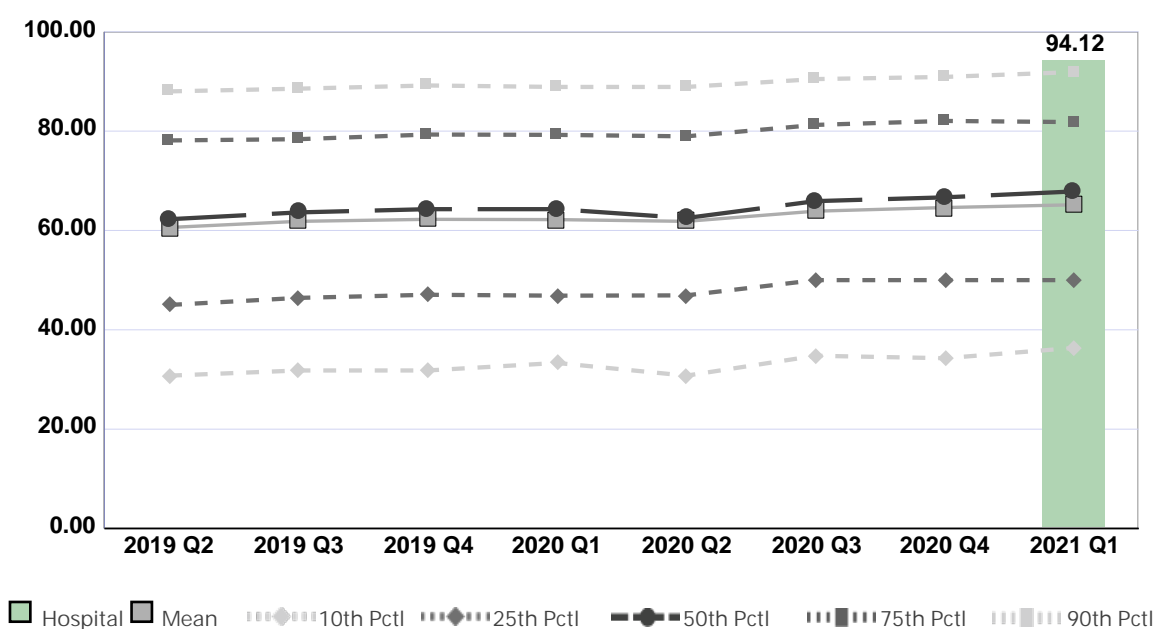
Compared by: All Hospitals

Peer Group: All Hospitals

Unit Type: Adult Med-Surg Combined

Unit: Med/Surg - 2 North

Measure: Percent of Direct Care RNs with BSN, MSN, or PhD



Quarter	2019 Q2	2019 Q3	2019 Q4	2020 Q1	2020 Q2	2020 Q3	2020 Q4	2021 Q1	Average
Unit	No Data	No Data	No Data	No Data	No Data	No Data	No Data	94.12	94.12
Mean	60.60	61.84	62.24	62.19	61.84	63.89	64.61	65.17	62.80
Standard Deviation	21.51	21.23	21.47	21.17	21.29	21.21	21.78	20.99	21.33
10th Percentile	30.77	31.82	31.82	33.33	30.77	34.78	34.29	36.36	32.99
25th Percentile	45.00	46.43	47.06	46.88	46.94	50.00	50.00	50.00	47.79
50th Percentile (Median)	62.26	63.64	64.29	64.29	62.50	65.91	66.67	67.86	64.68
75th Percentile	78.13	78.38	79.31	79.25	78.95	81.25	82.05	81.82	79.89
90th Percentile	88.00	88.54	89.19	88.89	88.89	90.48	90.91	91.89	89.60
# Units	1,093	1,074	1,082	919	883	927	938	886	975

If the number of units or hospitals is less than five, comparison data are suppressed to maintain confidentiality. If the number of units or hospitals is less than 20, comparison data may vary substantially over the time period and should be used with caution. For additional information, please refer to NDNQI reference documents.

Phelps Memorial Hospital

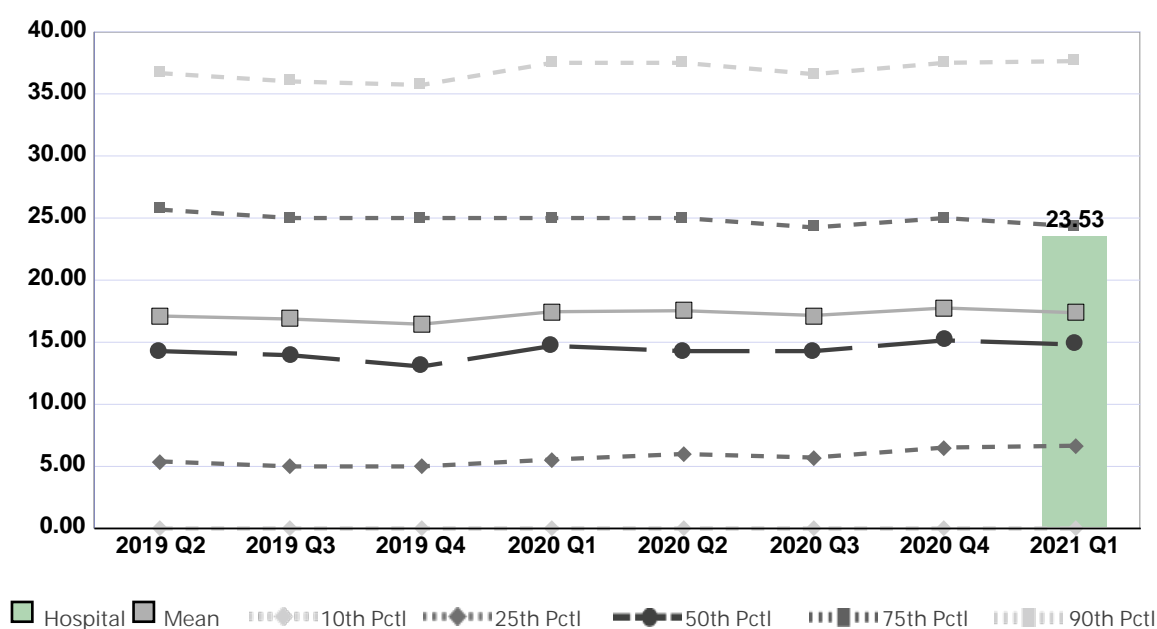
Compared by: All Hospitals

Peer Group: All Hospitals

Unit Type: Adult Med-Surg Combined

Unit: Med/Surg - 2 North

Measure: Percent of Direct Care RNs with Specialty Nursing Certification



Quarter	2019 Q2	2019 Q3	2019 Q4	2020 Q1	2020 Q2	2020 Q3	2020 Q4	2021 Q1	Average
Unit	No Data	No Data	No Data	No Data	No Data	No Data	No Data	23.53	23.53
Mean	17.11	16.87	16.45	17.46	17.54	17.16	17.76	17.38	17.22
Standard Deviation	14.75	15.03	14.63	15.05	15.11	14.70	14.89	14.58	14.84
10th Percentile	0.00	0.00	0.00	0.00	0.00	0.00	0.00	0.00	0.00
25th Percentile	5.41	5.00	5.00	5.56	6.00	5.71	6.52	6.67	5.73
50th Percentile (Median)	14.29	13.95	13.04	14.71	14.29	14.29	15.15	14.81	14.32
75th Percentile	25.68	25.00	25.00	25.00	25.00	24.24	25.00	24.32	24.91
90th Percentile	36.67	36.00	35.71	37.50	37.50	36.59	37.50	37.64	36.89
# Units	1,044	1,029	1,051	871	835	863	878	830	925

If the number of units or hospitals is less than five, comparison data are suppressed to maintain confidentiality. If the number of units or hospitals is less than 20, comparison data may vary substantially over the time period and should be used with caution. For additional information, please refer to NDNQI reference documents.

Phelps Memorial Hospital

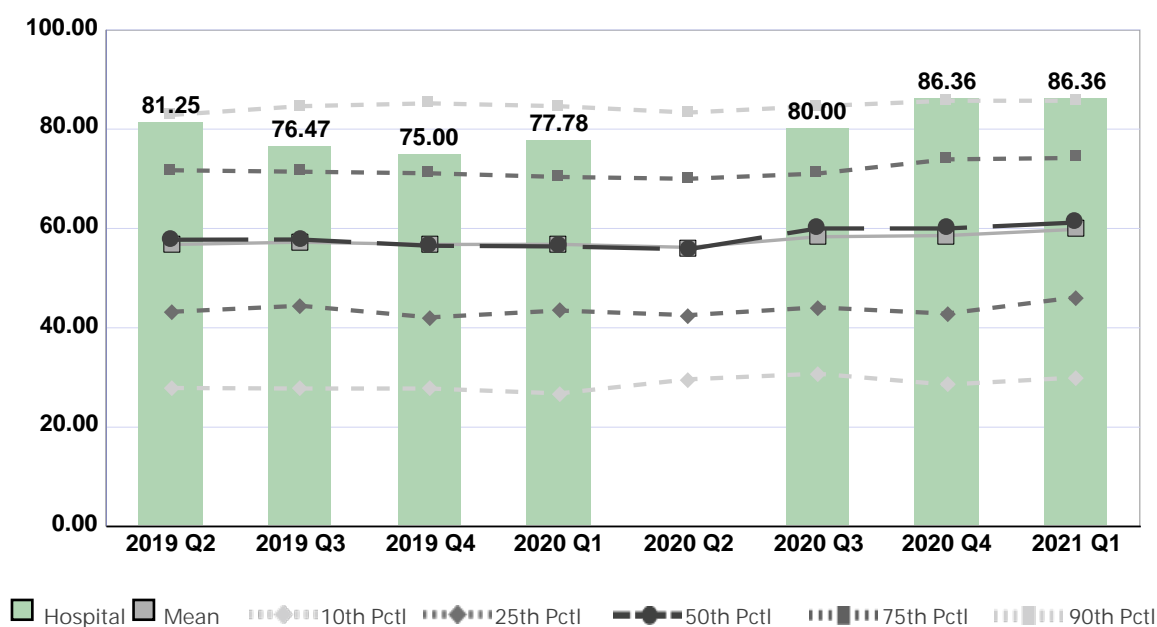
Compared by: All Hospitals

Peer Group: All Hospitals

Unit Type: Adult Psychiatric

Unit: 1S

Measure: Percent of Direct Care RNs with BSN, MSN, or PhD



Quarter	2019 Q2	2019 Q3	2019 Q4	2020 Q1	2020 Q2	2020 Q3	2020 Q4	2021 Q1	Average
Unit	81.25	76.47	75.00	77.78	No Data	80.00	86.36	86.36	80.46
Mean	56.78	57.24	56.79	56.81	56.20	58.32	58.58	59.83	57.57
Standard Deviation	20.65	20.42	20.47	19.93	20.14	19.98	21.09	20.20	20.36
10th Percentile	27.89	27.78	27.78	26.79	29.63	30.77	28.57	30.00	28.65
25th Percentile	43.22	44.44	42.11	43.48	42.55	44.12	42.86	46.15	43.62
50th Percentile (Median)	57.74	57.78	56.52	56.39	55.81	60.00	60.00	61.20	58.18
75th Percentile	71.71	71.43	71.11	70.37	70.00	71.05	73.91	74.19	71.72
90th Percentile	82.84	84.62	85.19	84.62	83.33	84.62	85.71	85.71	84.58
# Units	260	263	273	230	217	233	241	222	242

If the number of units or hospitals is less than five, comparison data are suppressed to maintain confidentiality. If the number of units or hospitals is less than 20, comparison data may vary substantially over the time period and should be used with caution. For additional information, please refer to NDNQI reference documents.

Phelps Memorial Hospital

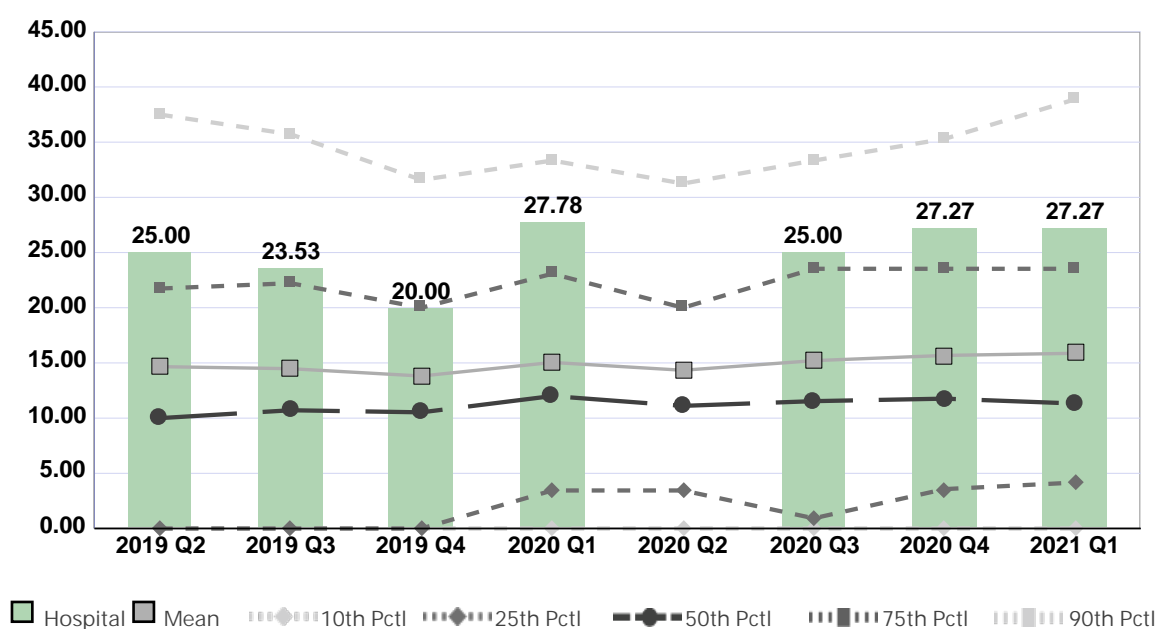
Compared by: All Hospitals

Peer Group: All Hospitals

Unit Type: Adult Psychiatric

Unit: 1S

Measure: Percent of Direct Care RNs with Specialty Nursing Certification



Quarter	2019 Q2	2019 Q3	2019 Q4	2020 Q1	2020 Q2	2020 Q3	2020 Q4	2021 Q1	Average
Unit	25.00	23.53	20.00	27.78	No Data	25.00	27.27	27.27	25.12
Mean	14.66	14.48	13.81	15.05	14.34	15.21	15.68	15.87	14.89
Standard Deviation	15.97	14.70	14.72	15.00	14.02	15.46	15.97	15.50	15.17
10th Percentile	0.00	0.00	0.00	0.00	0.00	0.00	0.00	0.00	0.00
25th Percentile	0.00	0.00	0.00	3.45	3.45	0.93	3.57	4.17	1.95
50th Percentile (Median)	10.00	10.71	10.53	12.00	11.11	11.54	11.76	11.32	11.12
75th Percentile	21.74	22.22	20.00	23.08	20.00	23.53	23.53	23.53	22.20
90th Percentile	37.50	35.71	31.58	33.33	31.25	33.33	35.29	38.89	34.61
# Units	239	247	262	215	201	216	219	206	226

If the number of units or hospitals is less than five, comparison data are suppressed to maintain confidentiality. If the number of units or hospitals is less than 20, comparison data may vary substantially over the time period and should be used with caution. For additional information, please refer to NDNQI reference documents.

Phelps Memorial Hospital

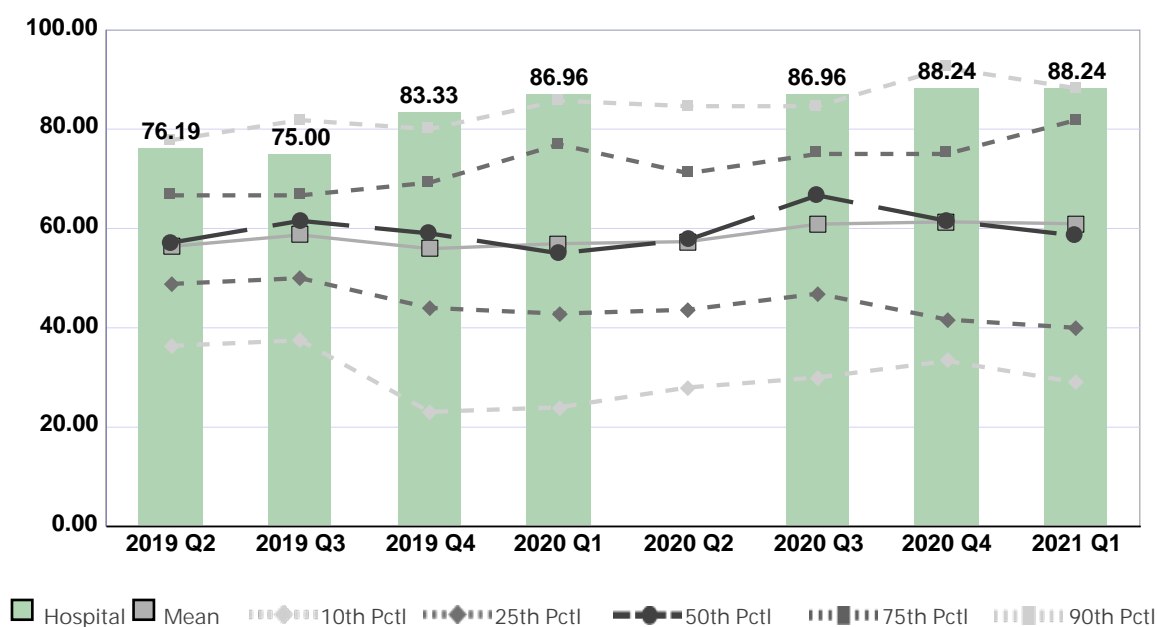
Compared by: All Hospitals

Peer Group: All Hospitals

Unit Type: Behavioral Health

Unit: Behavioral Health

Measure: Percent of Direct Care RNs with BSN, MSN, or PhD



Quarter	2019 Q2	2019 Q3	2019 Q4	2020 Q1	2020 Q2	2020 Q3	2020 Q4	2021 Q1	Average
Unit	76.19	75.00	83.33	86.96	No Data	86.96	88.24	88.24	83.56
Mean	56.38	58.70	55.93	56.94	57.35	60.87	61.33	60.95	58.56
Standard Deviation	17.34	18.67	20.49	23.18	20.46	20.62	22.20	23.85	20.85
10th Percentile	36.36	37.50	23.08	24.00	28.00	30.00	33.33	29.03	30.16
25th Percentile	48.84	50.00	44.02	42.86	43.65	46.88	41.67	40.00	44.74
50th Percentile (Median)	57.14	61.54	59.01	55.00	57.74	66.67	61.54	58.57	59.65
75th Percentile	66.67	66.67	69.23	76.92	71.13	75.00	75.00	81.82	72.80
90th Percentile	77.78	81.82	80.00	85.71	84.62	84.62	92.31	88.24	84.39
# Units	33	37	36	31	28	35	27	26	32

If the number of units or hospitals is less than five, comparison data are suppressed to maintain confidentiality. If the number of units or hospitals is less than 20, comparison data may vary substantially over the time period and should be used with caution. For additional information, please refer to NDNQI reference documents.

Phelps Memorial Hospital

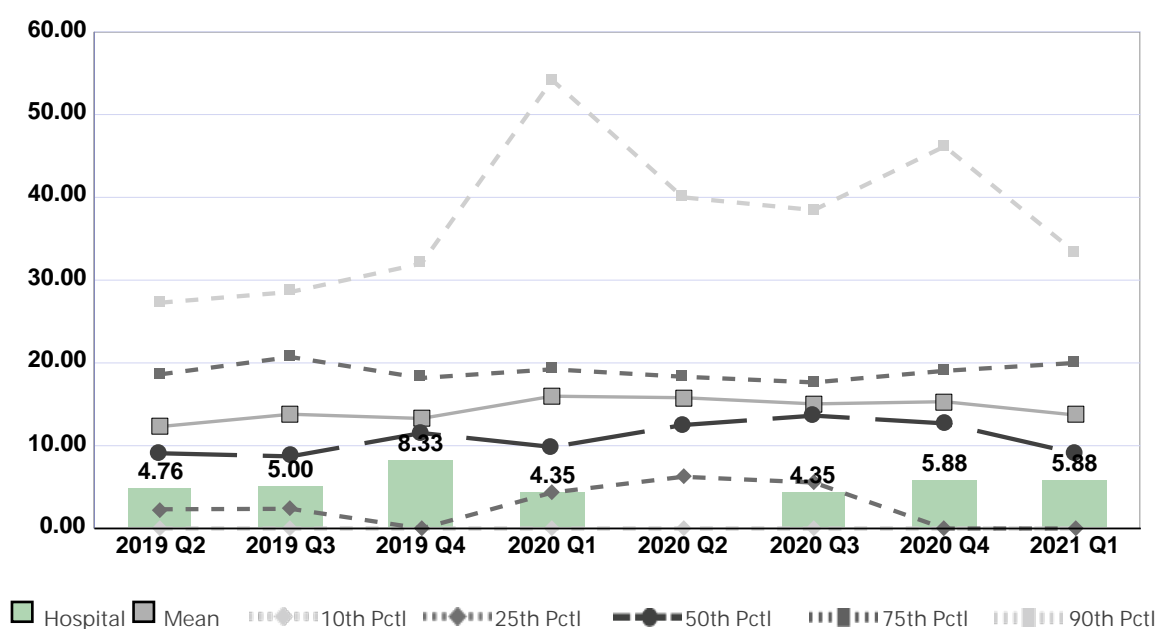
Compared by: All Hospitals

Peer Group: All Hospitals

Unit Type: Behavioral Health

Unit: Behavioral Health

Measure: Percent of Direct Care RNs with Specialty Nursing Certification



Quarter	2019 Q2	2019 Q3	2019 Q4	2020 Q1	2020 Q2	2020 Q3	2020 Q4	2021 Q1	Average
Unit	4.76	5.00	8.33	4.35	No Data	4.35	5.88	5.88	5.51
Mean	12.31	13.81	13.29	15.98	15.80	15.05	15.32	13.71	14.41
Standard Deviation	11.35	14.21	12.95	18.86	16.96	14.49	15.76	15.02	14.95
10th Percentile	0.00	0.00	0.00	0.00	0.00	0.00	0.00	0.00	0.00
25th Percentile	2.33	2.38	0.00	4.35	6.25	5.56	0.00	0.00	2.61
50th Percentile (Median)	9.09	8.71	11.54	9.85	12.50	13.64	12.70	9.09	10.89
75th Percentile	18.61	20.71	18.18	19.23	18.33	17.65	19.05	20.00	18.97
90th Percentile	27.27	28.57	32.00	54.17	40.00	38.46	46.15	33.33	37.49
# Units	32	36	35	30	28	35	26	25	31

If the number of units or hospitals is less than five, comparison data are suppressed to maintain confidentiality. If the number of units or hospitals is less than 20, comparison data may vary substantially over the time period and should be used with caution. For additional information, please refer to NDNQI reference documents.

Phelps Memorial Hospital

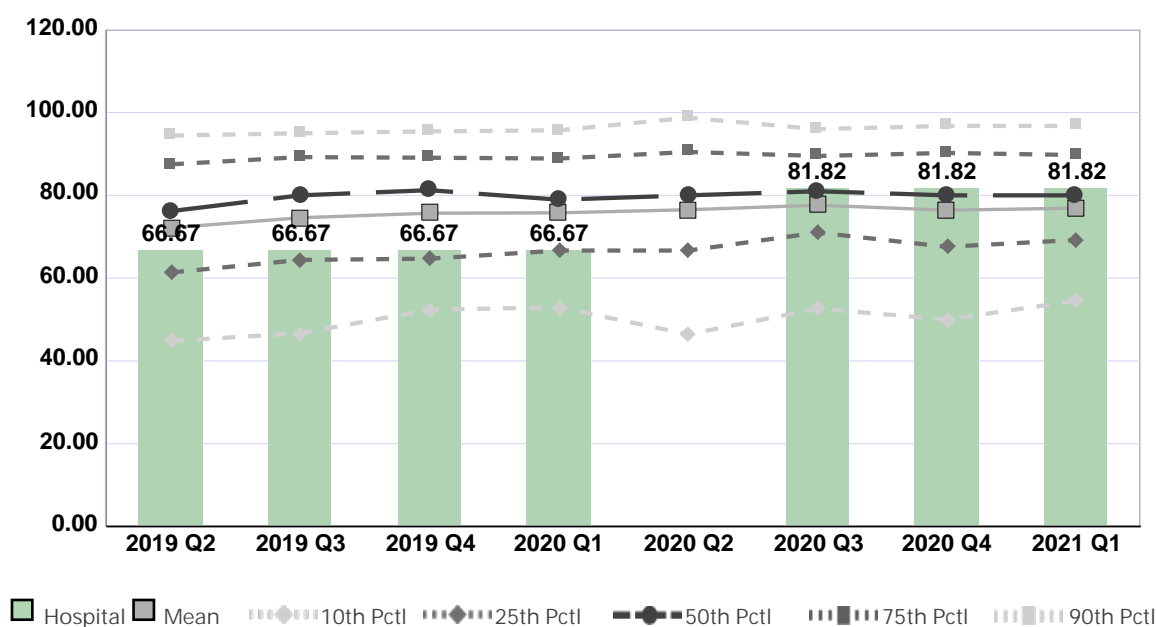
Compared by: All Hospitals

Peer Group: All Hospitals

Unit Type: Pediatric Med-Surg Combined

Unit: Peds

Measure: Percent of Direct Care RNs with BSN, MSN, or PhD



Quarter	2019 Q2	2019 Q3	2019 Q4	2020 Q1	2020 Q2	2020 Q3	2020 Q4	2021 Q1	Average
Unit	66.67	66.67	66.67	66.67	No Data	81.82	81.82	81.82	73.16
Mean	72.17	74.59	75.69	75.78	76.52	77.63	76.41	76.92	75.71
Standard Deviation	20.52	19.52	18.46	18.14	19.02	17.50	18.19	17.20	18.57
10th Percentile	44.83	46.67	52.38	52.94	46.43	52.63	50.00	54.55	50.05
25th Percentile	61.36	64.40	64.71	66.67	66.67	71.01	67.57	69.23	66.45
50th Percentile (Median)	76.19	80.00	81.25	78.95	80.00	80.99	80.00	80.00	79.67
75th Percentile	87.50	89.24	89.09	88.89	90.48	89.51	90.24	89.74	89.34
90th Percentile	94.44	95.00	95.45	95.71	98.75	96.00	96.77	96.77	96.11
# Units	193	184	192	171	159	172	166	158	174

If the number of units or hospitals is less than five, comparison data are suppressed to maintain confidentiality. If the number of units or hospitals is less than 20, comparison data may vary substantially over the time period and should be used with caution. For additional information, please refer to NDNQI reference documents.

Phelps Memorial Hospital

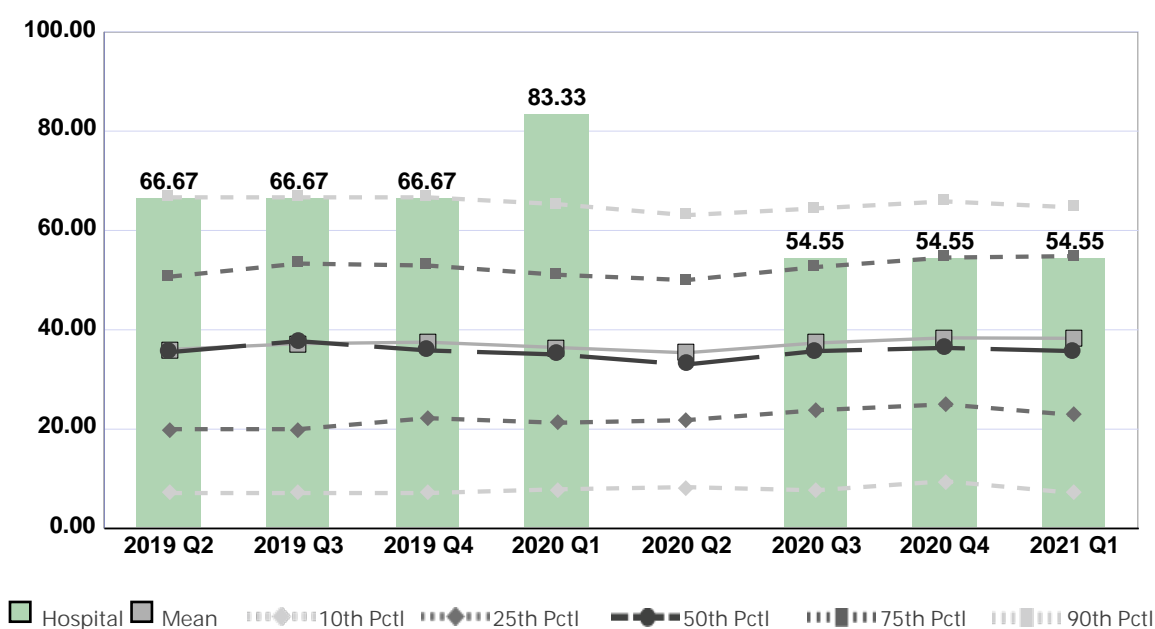
Compared by: All Hospitals

Peer Group: All Hospitals

Unit Type: Pediatric Med-Surg Combined

Unit: Peds

Measure: Percent of Direct Care RNs with Specialty Nursing Certification



Quarter	2019 Q2	2019 Q3	2019 Q4	2020 Q1	2020 Q2	2020 Q3	2020 Q4	2021 Q1	Average
Unit	66.67	66.67	66.67	83.33	No Data	54.55	54.55	54.55	63.85
Mean	36.04	37.21	37.52	36.44	35.38	37.34	38.38	38.29	37.08
Standard Deviation	22.15	22.09	22.18	21.26	20.33	20.85	20.90	22.45	21.53
10th Percentile	7.14	7.14	7.14	7.89	8.33	7.69	9.52	7.14	7.75
25th Percentile	20.00	20.00	22.22	21.29	21.82	23.81	25.00	22.86	22.12
50th Percentile (Median)	35.49	37.72	35.85	35.04	33.01	35.71	36.36	35.71	35.61
75th Percentile	50.68	53.33	52.94	51.09	50.00	52.63	54.55	54.84	52.51
90th Percentile	66.67	66.67	66.67	65.31	63.08	64.44	65.85	64.63	65.41
# Units	186	180	189	168	156	169	163	155	171

If the number of units or hospitals is less than five, comparison data are suppressed to maintain confidentiality. If the number of units or hospitals is less than 20, comparison data may vary substantially over the time period and should be used with caution. For additional information, please refer to NDNQI reference documents.

Phelps Memorial Hospital

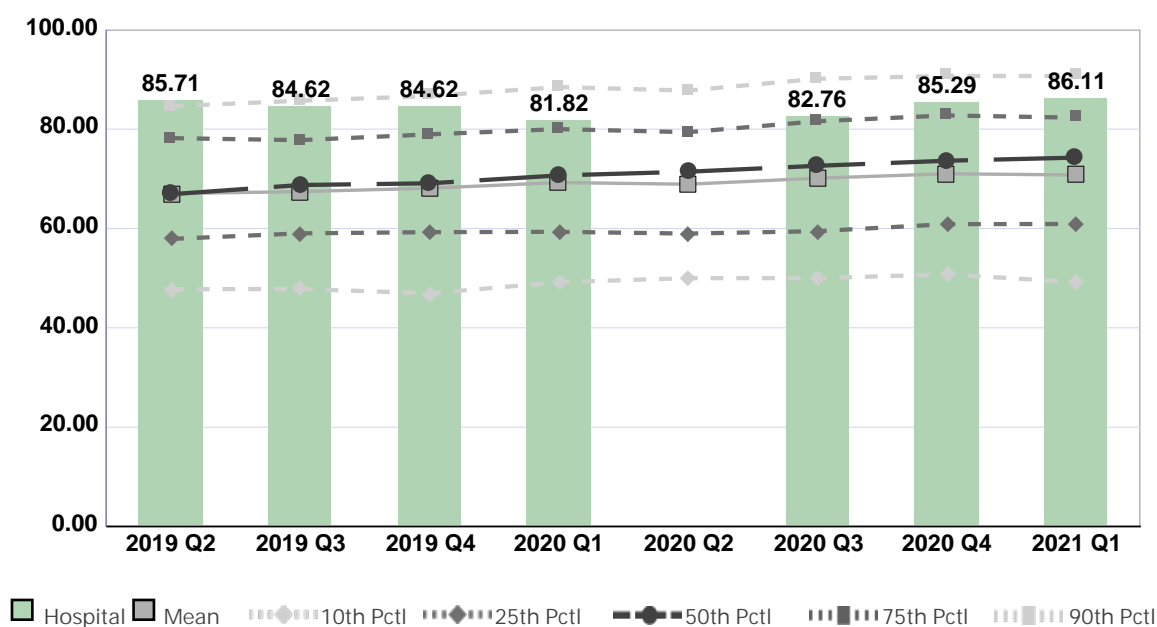
Compared by: All Hospitals

Peer Group: All Hospitals

Unit Type: Mother/Baby

Unit: Well Baby and Postpartum

Measure: Percent of Direct Care RNs with BSN, MSN, or PhD



Quarter	2019 Q2	2019 Q3	2019 Q4	2020 Q1	2020 Q2	2020 Q3	2020 Q4	2021 Q1	Average
Unit	85.71	84.62	84.62	81.82	No Data	82.76	85.29	86.11	84.42
Mean	67.02	67.42	68.10	69.24	68.91	70.12	71.01	70.77	69.07
Standard Deviation	15.49	15.35	15.27	16.31	15.51	16.50	16.34	16.73	15.94
10th Percentile	47.76	47.83	46.94	49.18	50.00	50.00	50.77	49.18	48.96
25th Percentile	57.89	59.02	59.26	59.32	58.97	59.46	60.87	60.90	59.46
50th Percentile (Median)	66.89	68.75	69.09	70.68	71.43	72.61	73.63	74.26	70.92
75th Percentile	78.18	77.78	78.95	80.00	79.38	81.58	82.76	82.31	80.12
90th Percentile	84.62	85.71	86.67	88.46	87.76	90.14	90.70	90.70	88.09
# Units	222	235	239	206	191	218	206	204	215

If the number of units or hospitals is less than five, comparison data are suppressed to maintain confidentiality. If the number of units or hospitals is less than 20, comparison data may vary substantially over the time period and should be used with caution. For additional information, please refer to NDNQI reference documents.

Phelps Memorial Hospital

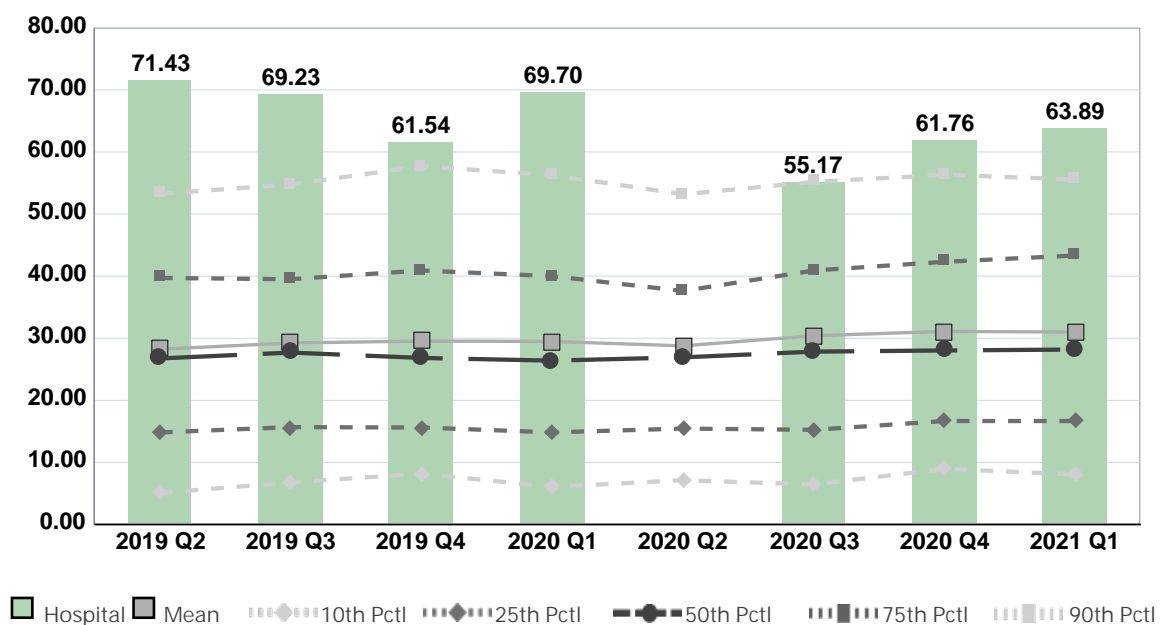
Compared by: All Hospitals

Peer Group: All Hospitals

Unit Type: Mother/Baby

Unit: Well Baby and Postpartum

Measure: Percent of Direct Care RNs with Specialty Nursing Certification



Quarter	2019 Q2	2019 Q3	2019 Q4	2020 Q1	2020 Q2	2020 Q3	2020 Q4	2021 Q1	Average
Unit	71.43	69.23	61.54	69.70	No Data	55.17	61.76	63.89	64.67
Mean	28.23	29.24	29.55	29.48	28.77	30.40	31.10	30.99	29.72
Standard Deviation	18.35	18.72	19.15	19.58	18.01	19.40	18.76	19.36	18.92
10th Percentile	5.09	6.78	8.20	6.07	7.14	6.45	8.96	8.07	7.09
25th Percentile	14.82	15.69	15.63	14.84	15.45	15.25	16.67	16.67	15.63
50th Percentile (Median)	26.75	27.69	26.83	26.39	26.92	27.84	28.04	28.18	27.33
75th Percentile	39.71	39.51	40.91	40.00	37.61	40.91	42.31	43.33	40.54
90th Percentile	53.26	54.76	57.69	56.26	53.19	55.17	56.33	55.56	55.28
# Units	220	233	237	200	188	214	200	200	212

If the number of units or hospitals is less than five, comparison data are suppressed to maintain confidentiality. If the number of units or hospitals is less than 20, comparison data may vary substantially over the time period and should be used with caution. For additional information, please refer to NDNQI reference documents.

Phelps Memorial Hospital

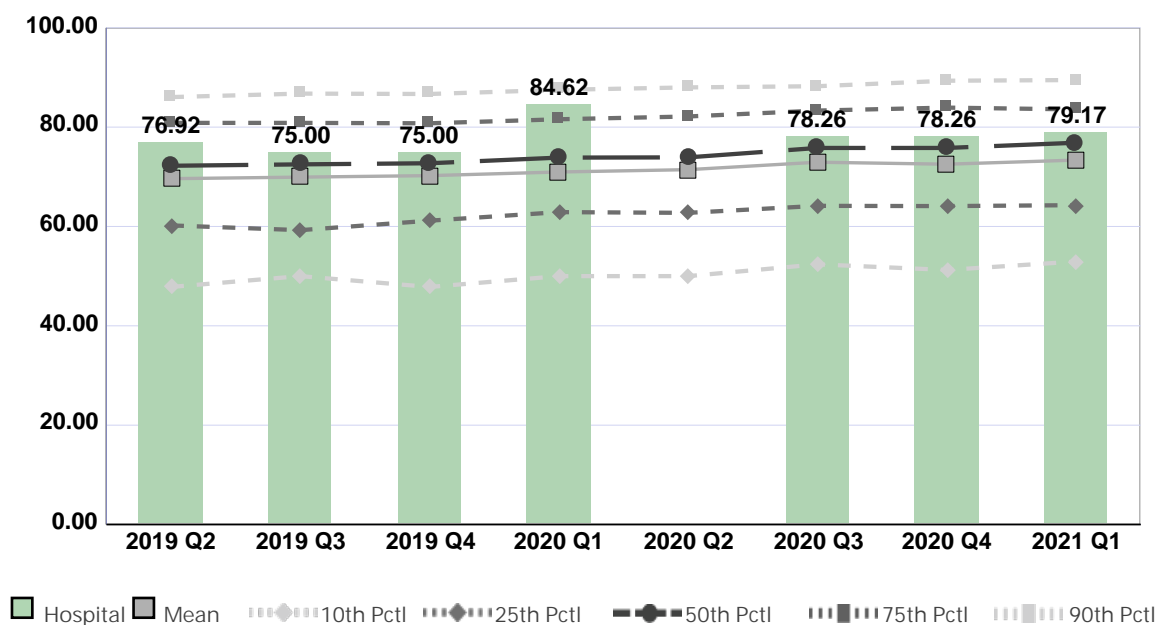
Compared by: All Hospitals

Peer Group: All Hospitals

Unit Type: Labor and Delivery

Unit: Labor and Delivery

Measure: Percent of Direct Care RNs with BSN, MSN, or PhD



Quarter	2019 Q2	2019 Q3	2019 Q4	2020 Q1	2020 Q2	2020 Q3	2020 Q4	2021 Q1	Average
Unit	76.92	75.00	75.00	84.62	No Data	78.26	78.26	79.17	78.18
Mean	69.62	69.93	70.23	70.97	71.44	72.93	72.54	73.36	71.38
Standard Deviation	15.21	14.79	15.44	15.33	14.90	14.27	15.98	14.93	15.11
10th Percentile	47.83	50.00	47.83	50.00	50.00	52.38	51.25	52.94	50.28
25th Percentile	60.22	59.26	61.17	62.89	62.75	64.15	64.10	64.29	62.35
50th Percentile (Median)	72.22	72.50	72.73	73.86	73.91	75.81	75.81	76.86	74.21
75th Percentile	80.85	80.85	80.77	81.58	82.14	83.33	83.93	83.56	82.13
90th Percentile	86.05	86.75	86.67	87.50	88.00	88.24	89.34	89.47	87.75
# Units	235	242	249	214	197	214	210	206	221

If the number of units or hospitals is less than five, comparison data are suppressed to maintain confidentiality. If the number of units or hospitals is less than 20, comparison data may vary substantially over the time period and should be used with caution. For additional information, please refer to NDNQI reference documents.

Phelps Memorial Hospital

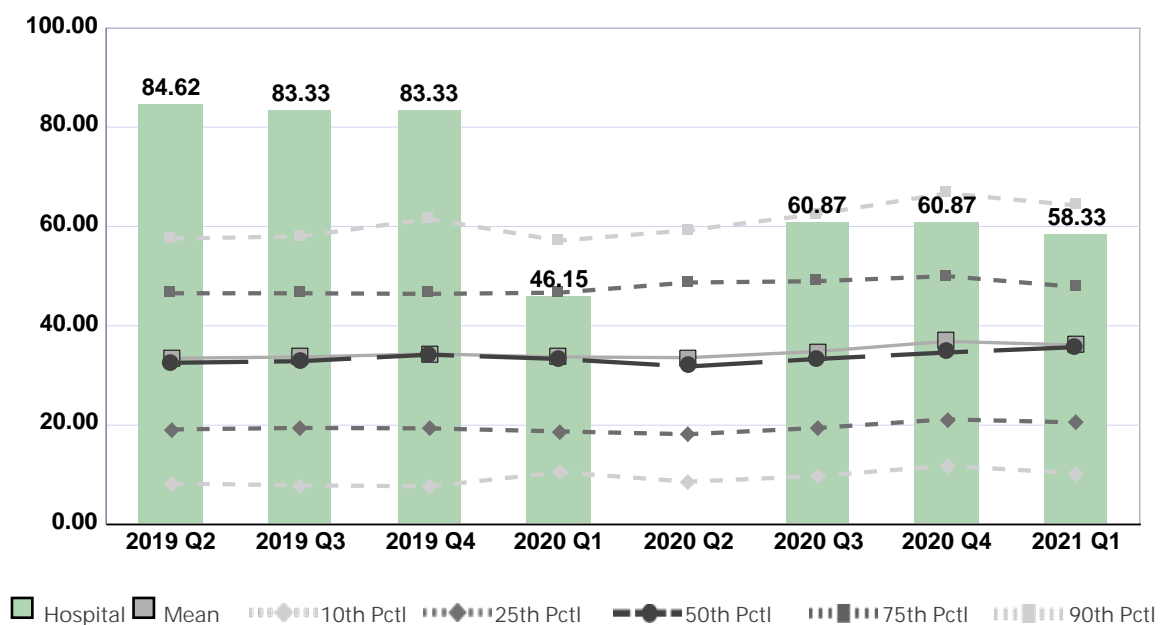
Compared by: All Hospitals

Peer Group: All Hospitals

Unit Type: Labor and Delivery

Unit: Labor and Delivery

Measure: Percent of Direct Care RNs with Specialty Nursing Certification



Quarter	2019 Q2	2019 Q3	2019 Q4	2020 Q1	2020 Q2	2020 Q3	2020 Q4	2021 Q1	Average
Unit	84.62	83.33	83.33	46.15	No Data	60.87	60.87	58.33	68.22
Mean	33.48	33.72	34.35	33.74	33.59	34.84	36.87	36.14	34.59
Standard Deviation	19.47	19.46	19.51	18.28	19.29	19.77	20.90	19.84	19.57
10th Percentile	8.26	7.89	7.69	10.53	8.63	9.76	11.84	10.31	9.36
25th Percentile	19.15	19.44	19.35	18.75	18.18	19.44	21.18	20.55	19.51
50th Percentile (Median)	32.56	32.88	34.19	33.33	31.81	33.33	34.63	35.71	33.56
75th Percentile	46.55	46.55	46.43	46.67	48.72	48.98	50.00	47.83	47.72
90th Percentile	57.58	58.00	61.54	57.14	59.23	62.50	66.67	64.25	60.86
# Units	227	234	243	205	190	207	204	200	214

If the number of units or hospitals is less than five, comparison data are suppressed to maintain confidentiality. If the number of units or hospitals is less than 20, comparison data may vary substantially over the time period and should be used with caution. For additional information, please refer to NDNQI reference documents.

Phelps Memorial Hospital

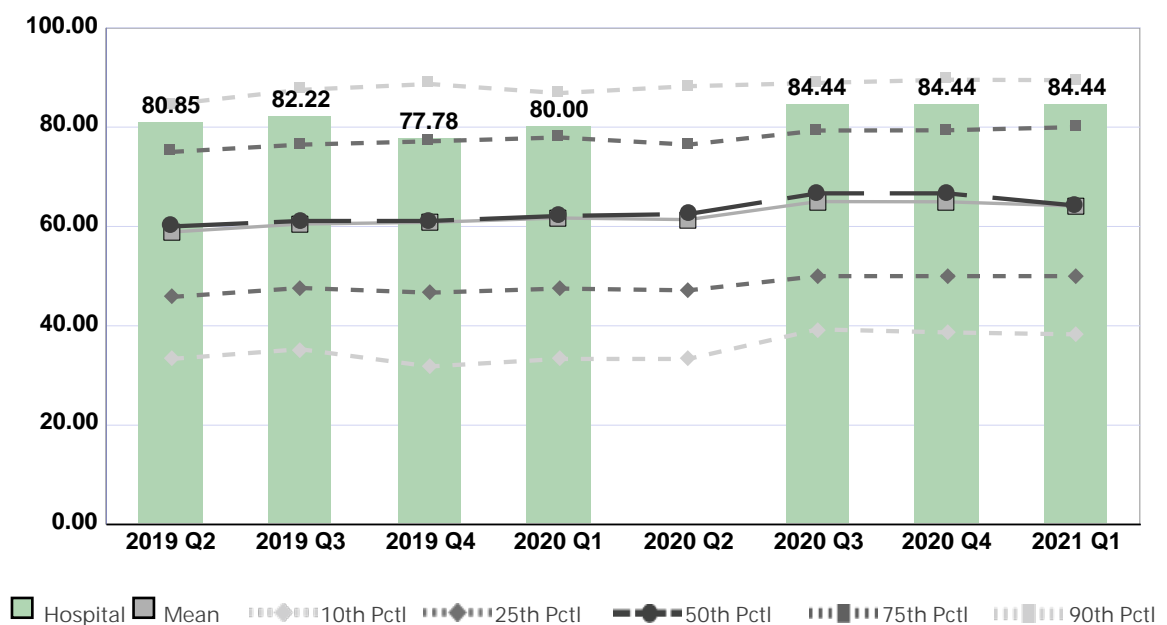
Compared by: All Hospitals

Peer Group: All Hospitals

Unit Type: ED-10,000-29,999 Annual Visits

Unit: ER

Measure: Percent of Direct Care RNs with BSN, MSN, or PhD



Quarter	2019 Q2	2019 Q3	2019 Q4	2020 Q1	2020 Q2	2020 Q3	2020 Q4	2021 Q1	Average
Unit	80.85	82.22	77.78	80.00	No Data	84.44	84.44	84.44	82.03
Mean	58.88	60.50	60.83	61.70	61.38	65.01	64.97	64.12	62.17
Standard Deviation	21.40	20.93	20.93	21.23	20.27	19.09	19.39	19.91	20.39
10th Percentile	33.33	35.29	31.82	33.33	33.33	39.29	38.68	38.28	35.42
25th Percentile	45.80	47.62	46.67	47.50	47.14	50.00	50.00	50.00	48.09
50th Percentile (Median)	60.00	61.11	61.11	62.12	62.50	66.67	66.67	64.20	63.05
75th Percentile	75.00	76.47	77.14	77.92	76.47	79.31	79.36	80.00	77.71
90th Percentile	84.62	87.50	88.68	86.84	88.24	88.89	89.54	89.44	87.97
# Units	204	211	205	174	172	189	180	170	188

If the number of units or hospitals is less than five, comparison data are suppressed to maintain confidentiality. If the number of units or hospitals is less than 20, comparison data may vary substantially over the time period and should be used with caution. For additional information, please refer to NDNQI reference documents.

Phelps Memorial Hospital

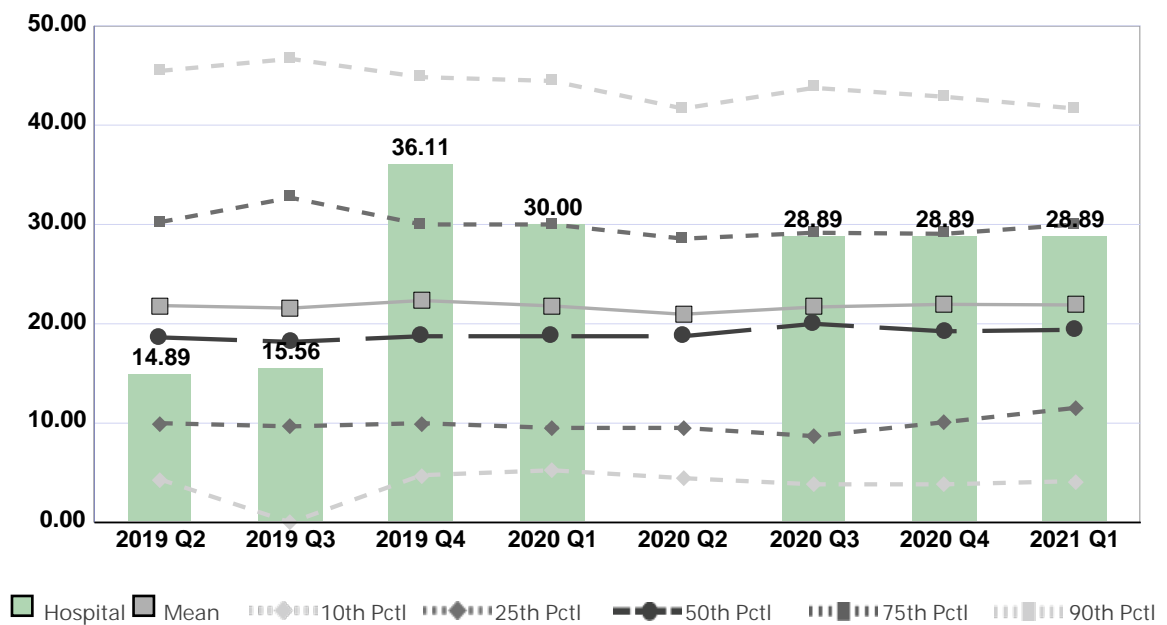
Compared by: All Hospitals

Peer Group: All Hospitals

Unit Type: ED-10,000-29,999 Annual Visits

Unit: ER

Measure: Percent of Direct Care RNs with Specialty Nursing Certification



Quarter	2019 Q2	2019 Q3	2019 Q4	2020 Q1	2020 Q2	2020 Q3	2020 Q4	2021 Q1	Average
Unit	14.89	15.56	36.11	30.00	No Data	28.89	28.89	28.89	26.18
Mean	21.84	21.58	22.35	21.80	20.96	21.69	21.96	21.90	21.76
Standard Deviation	15.86	16.94	17.38	15.53	15.10	16.53	16.71	15.41	16.18
10th Percentile	4.35	0.00	4.76	5.26	4.46	3.85	3.85	4.17	3.84
25th Percentile	10.00	9.68	10.00	9.52	9.52	8.70	10.10	11.54	9.88
50th Percentile (Median)	18.63	18.18	18.75	18.75	18.75	20.00	19.25	19.40	18.96
75th Percentile	30.23	32.69	30.00	30.00	28.57	29.17	29.06	30.00	29.96
90th Percentile	45.45	46.67	44.83	44.44	41.67	43.75	42.86	41.67	43.92
# Units	198	203	201	169	169	181	176	166	183

If the number of units or hospitals is less than five, comparison data are suppressed to maintain confidentiality. If the number of units or hospitals is less than 20, comparison data may vary substantially over the time period and should be used with caution. For additional information, please refer to NDNQI reference documents.

Phelps Memorial Hospital

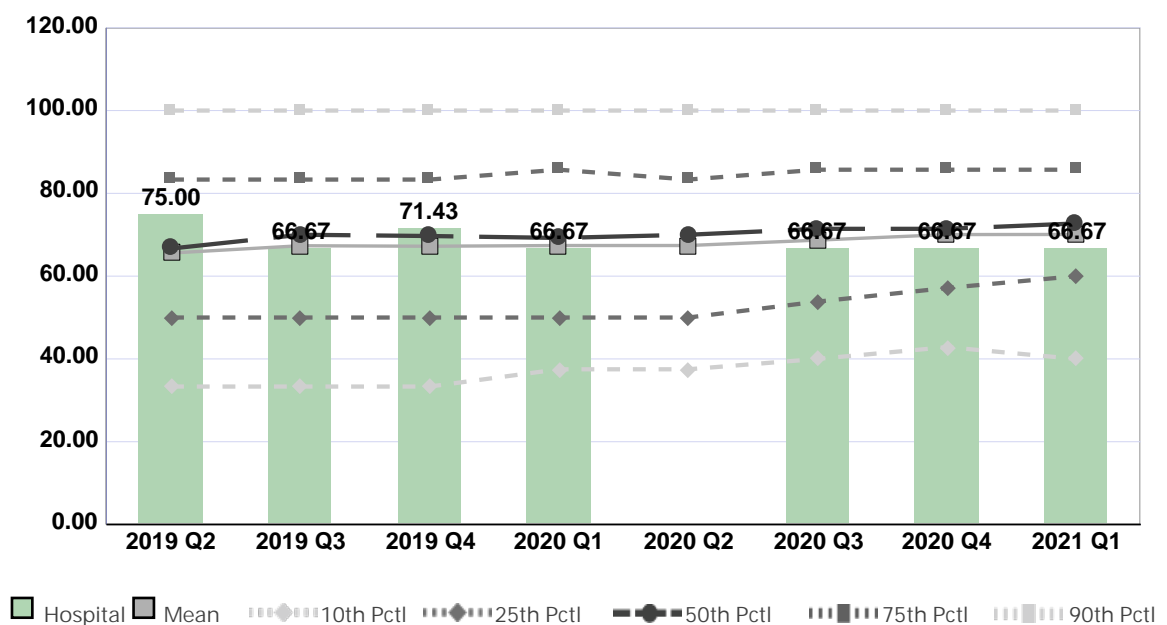
Compared by: All Hospitals

Peer Group: All Hospitals

Unit Type: Interventional Cardiology/Radiology

Unit: Interventional Radiology

Measure: Percent of Direct Care RNs with BSN, MSN, or PhD



Quarter	2019 Q2	2019 Q3	2019 Q4	2020 Q1	2020 Q2	2020 Q3	2020 Q4	2021 Q1	Average
Unit	75.00	66.67	71.43	66.67	No Data	66.67	66.67	66.67	68.54
Mean	65.59	67.35	67.23	67.40	67.40	68.70	70.04	70.07	67.97
Standard Deviation	24.19	23.68	23.78	23.43	23.17	23.03	21.62	23.27	23.27
10th Percentile	33.33	33.33	33.33	37.50	37.50	40.00	42.86	40.00	37.23
25th Percentile	50.00	50.00	50.00	50.00	50.00	53.85	57.14	60.00	52.62
50th Percentile (Median)	66.67	70.00	69.70	69.23	70.00	71.43	71.43	72.73	70.15
75th Percentile	83.33	83.33	83.33	85.71	83.33	85.71	85.71	85.71	84.52
90th Percentile	100.00	100.00	100.00	100.00	100.00	100.00	100.00	100.00	100.00
# Units	461	480	479	443	438	483	476	459	465

If the number of units or hospitals is less than five, comparison data are suppressed to maintain confidentiality. If the number of units or hospitals is less than 20, comparison data may vary substantially over the time period and should be used with caution. For additional information, please refer to NDNQI reference documents.

Phelps Memorial Hospital

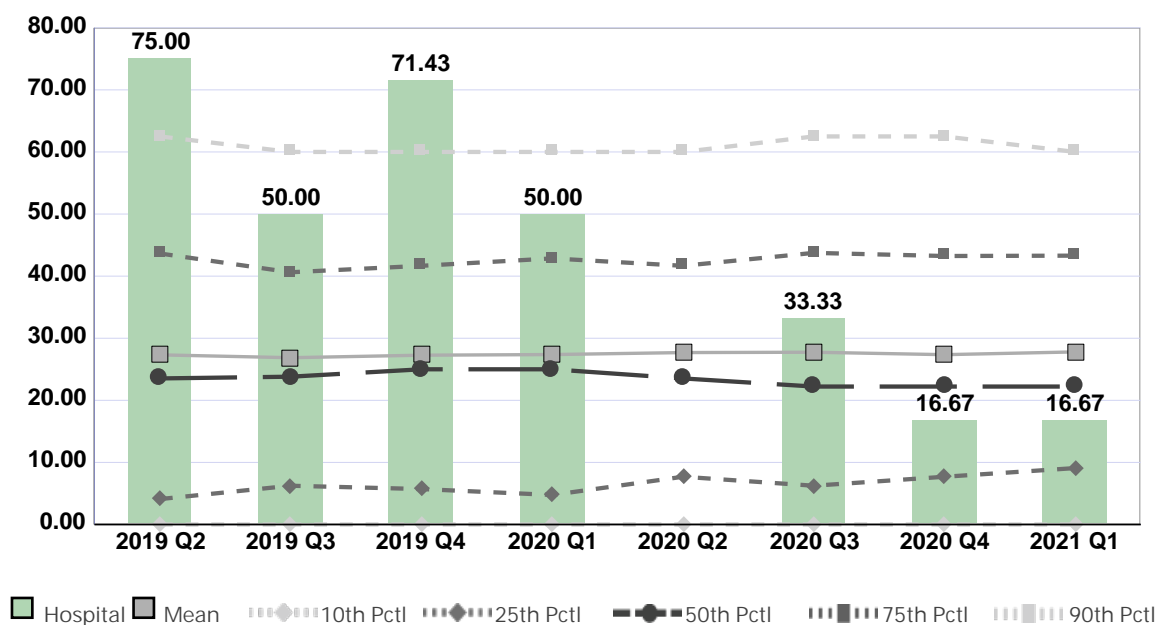
Compared by: All Hospitals

Peer Group: All Hospitals

Unit Type: Interventional Cardiology/Radiology

Unit: Interventional Radiology

Measure: Percent of Direct Care RNs with Specialty Nursing Certification



Quarter	2019 Q2	2019 Q3	2019 Q4	2020 Q1	2020 Q2	2020 Q3	2020 Q4	2021 Q1	Average
Unit	75.00	50.00	71.43	50.00	No Data	33.33	16.67	16.67	44.73
Mean	27.33	26.87	27.27	27.37	27.69	27.75	27.36	27.80	27.43
Standard Deviation	24.86	23.99	24.06	24.08	24.64	24.81	24.31	24.01	24.35
10th Percentile	0.00	0.00	0.00	0.00	0.00	0.00	0.00	0.00	0.00
25th Percentile	4.10	6.25	5.71	4.76	7.69	6.25	7.69	9.09	6.44
50th Percentile (Median)	23.53	23.81	25.00	25.00	23.53	22.22	22.22	22.22	23.44
75th Percentile	43.65	40.63	41.67	42.86	41.67	43.75	43.24	43.30	42.60
90th Percentile	62.50	60.00	60.00	60.00	60.00	62.50	62.50	60.00	60.94
# Units	448	471	475	437	427	465	458	436	452

If the number of units or hospitals is less than five, comparison data are suppressed to maintain confidentiality. If the number of units or hospitals is less than 20, comparison data may vary substantially over the time period and should be used with caution. For additional information, please refer to NDNQI reference documents.

Phelps Memorial Hospital

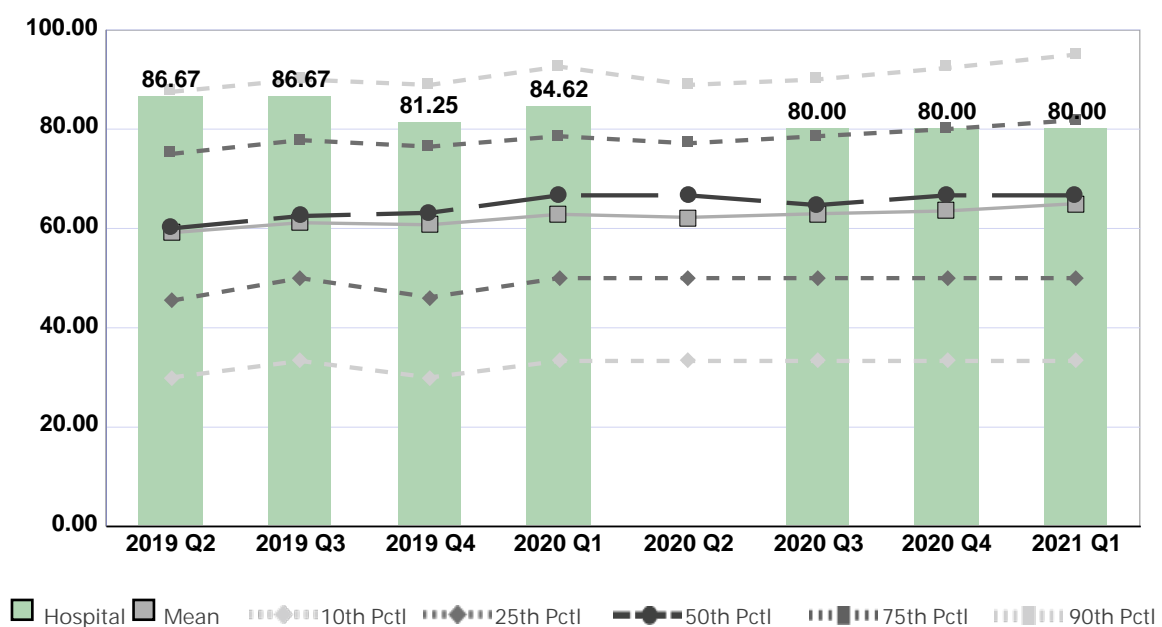
Compared by: All Hospitals

Peer Group: All Hospitals

Unit Type: Endoscopy

Unit: Endoscopy

Measure: Percent of Direct Care RNs with BSN, MSN, or PhD



Quarter	2019 Q2	2019 Q3	2019 Q4	2020 Q1	2020 Q2	2020 Q3	2020 Q4	2021 Q1	Average
Unit	86.67	86.67	81.25	84.62	No Data	80.00	80.00	80.00	82.74
Mean	59.14	61.16	60.75	62.85	62.23	62.97	63.53	65.00	62.20
Standard Deviation	22.60	22.13	22.78	23.11	22.16	22.60	23.16	23.67	22.77
10th Percentile	30.00	33.33	30.00	33.33	33.33	33.33	33.33	33.33	32.50
25th Percentile	45.45	50.00	46.15	50.00	50.00	50.00	50.00	50.00	48.95
50th Percentile (Median)	60.00	62.50	63.16	66.67	66.67	64.71	66.67	66.67	64.63
75th Percentile	75.00	77.78	76.47	78.57	77.14	78.57	80.00	81.82	78.17
90th Percentile	87.50	90.00	88.89	92.59	88.89	90.00	92.31	95.00	90.65
# Units	308	314	307	281	273	295	284	277	292

If the number of units or hospitals is less than five, comparison data are suppressed to maintain confidentiality. If the number of units or hospitals is less than 20, comparison data may vary substantially over the time period and should be used with caution. For additional information, please refer to NDNQI reference documents.

Phelps Memorial Hospital

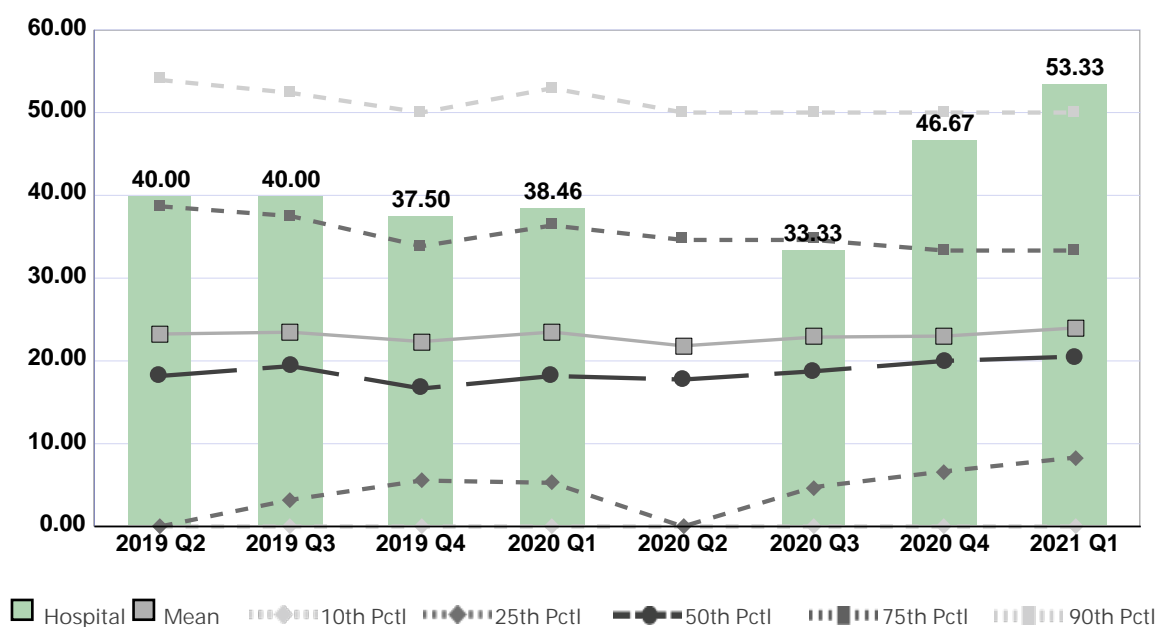
Compared by: All Hospitals

Peer Group: All Hospitals

Unit Type: Endoscopy

Unit: Endoscopy

Measure: Percent of Direct Care RNs with Specialty Nursing Certification



Quarter	2019 Q2	2019 Q3	2019 Q4	2020 Q1	2020 Q2	2020 Q3	2020 Q4	2021 Q1	Average
Unit	40.00	40.00	37.50	38.46	No Data	33.33	46.67	53.33	41.33
Mean	23.25	23.47	22.34	23.49	21.82	22.88	23.00	23.98	23.03
Standard Deviation	22.09	22.47	21.43	22.79	20.80	20.69	20.36	20.31	21.37
10th Percentile	0.00	0.00	0.00	0.00	0.00	0.00	0.00	0.00	0.00
25th Percentile	0.00	3.23	5.56	5.28	0.00	4.76	6.67	8.33	4.23
50th Percentile (Median)	18.18	19.38	16.67	18.18	17.75	18.75	20.00	20.53	18.68
75th Percentile	38.68	37.50	33.85	36.36	34.62	34.62	33.33	33.33	35.29
90th Percentile	53.94	52.38	50.00	52.94	50.00	50.00	50.00	50.00	51.16
# Units	300	306	304	276	266	285	271	264	284

If the number of units or hospitals is less than five, comparison data are suppressed to maintain confidentiality. If the number of units or hospitals is less than 20, comparison data may vary substantially over the time period and should be used with caution. For additional information, please refer to NDNQI reference documents.

Phelps Memorial Hospital

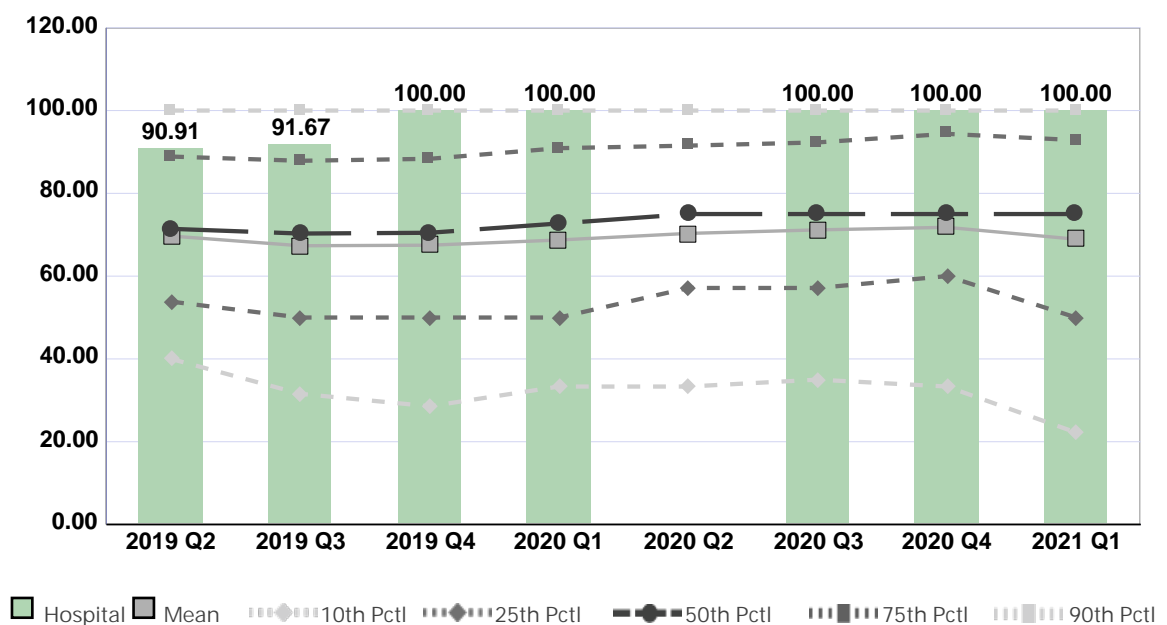
Compared by: All Hospitals

Peer Group: All Hospitals

Unit Type: Cancer Care

Unit: Infusion Unit

Measure: Percent of Direct Care RNs with BSN, MSN, or PhD



Quarter	2019 Q2	2019 Q3	2019 Q4	2020 Q1	2020 Q2	2020 Q3	2020 Q4	2021 Q1	Average
Unit	90.91	91.67	100.00	100.00	No Data	100.00	100.00	100.00	97.51
Mean	69.69	67.34	67.47	68.73	70.32	71.18	71.79	68.92	69.43
Standard Deviation	24.47	26.76	27.01	27.18	25.83	25.34	26.77	28.96	26.54
10th Percentile	40.00	31.58	28.57	33.33	33.33	35.00	33.33	22.22	32.17
25th Percentile	53.85	50.00	50.00	50.00	57.14	57.14	60.00	50.00	53.52
50th Percentile (Median)	71.43	70.29	70.48	72.73	75.00	75.00	75.00	75.00	73.12
75th Percentile	88.89	87.87	88.35	90.91	91.53	92.31	94.38	92.86	90.88
90th Percentile	100.00	100.00	100.00	100.00	100.00	100.00	100.00	100.00	100.00
# Units	422	444	452	420	395	471	452	438	437

If the number of units or hospitals is less than five, comparison data are suppressed to maintain confidentiality. If the number of units or hospitals is less than 20, comparison data may vary substantially over the time period and should be used with caution. For additional information, please refer to NDNQI reference documents.

Phelps Memorial Hospital

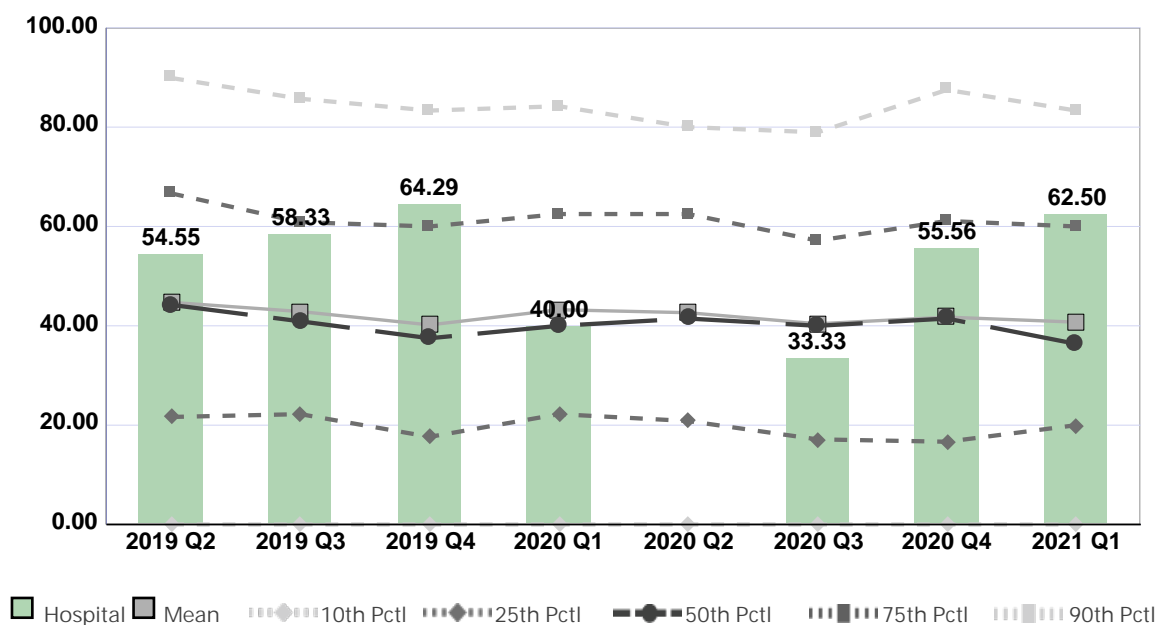
Compared by: All Hospitals

Peer Group: All Hospitals

Unit Type: Cancer Care

Unit: Infusion Unit

Measure: Percent of Direct Care RNs with Specialty Nursing Certification



Quarter	2019 Q2	2019 Q3	2019 Q4	2020 Q1	2020 Q2	2020 Q3	2020 Q4	2021 Q1	Average
Unit	54.55	58.33	64.29	40.00	No Data	33.33	55.56	62.50	52.65
Mean	44.72	42.88	40.18	43.24	42.64	40.41	41.75	40.74	42.07
Standard Deviation	29.65	29.37	29.11	28.84	28.49	28.74	29.83	29.18	29.15
10th Percentile	0.00	0.00	0.00	0.00	0.00	0.00	0.00	0.00	0.00
25th Percentile	21.65	22.22	17.65	22.22	20.83	17.14	16.67	20.00	19.80
50th Percentile (Median)	44.22	40.91	37.50	40.00	41.46	40.00	41.46	36.36	40.24
75th Percentile	66.67	60.87	60.00	62.50	62.50	57.14	61.11	60.00	61.35
90th Percentile	89.90	85.71	83.33	84.21	80.00	78.95	87.50	83.33	84.12
# Units	420	419	451	418	389	465	449	426	430

If the number of units or hospitals is less than five, comparison data are suppressed to maintain confidentiality. If the number of units or hospitals is less than 20, comparison data may vary substantially over the time period and should be used with caution. For additional information, please refer to NDNQI reference documents.

Phelps Memorial Hospital

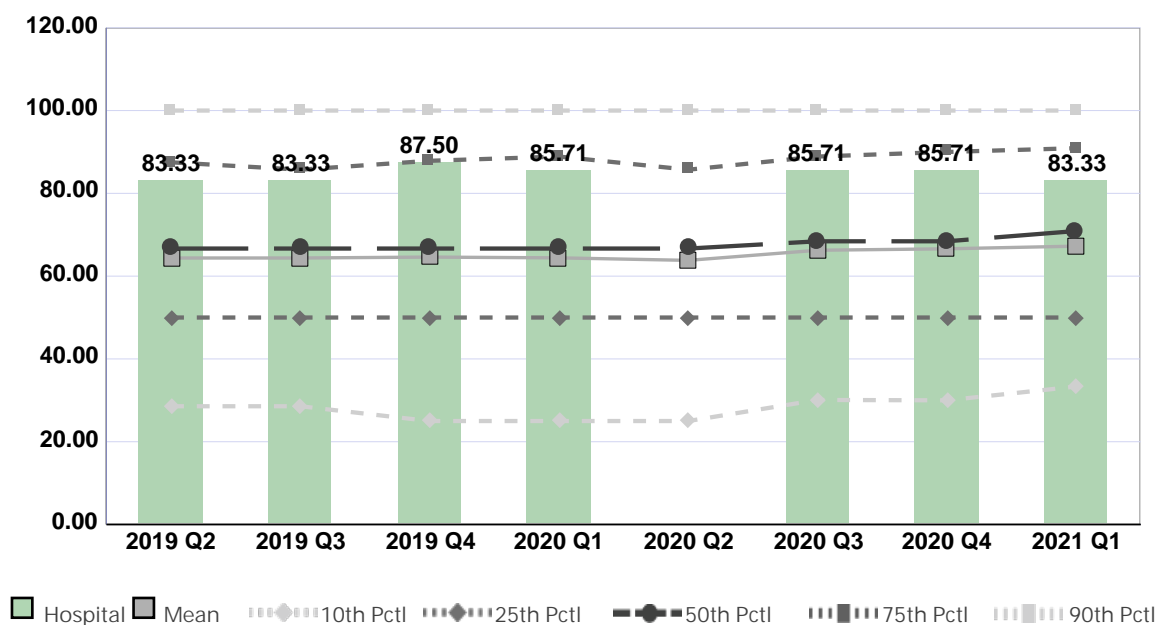
Compared by: All Hospitals

Peer Group: All Hospitals

Unit Type: Procedural Unit

Unit: Wound Clinic

Measure: Percent of Direct Care RNs with BSN, MSN, or PhD



Quarter	2019 Q2	2019 Q3	2019 Q4	2020 Q1	2020 Q2	2020 Q3	2020 Q4	2021 Q1	Average
Unit	83.33	83.33	87.50	85.71	No Data	85.71	85.71	83.33	84.95
Mean	64.38	64.39	64.60	64.42	63.81	66.26	66.60	67.25	65.21
Standard Deviation	27.30	26.66	27.93	27.79	27.65	26.93	27.52	27.17	27.37
10th Percentile	28.57	28.57	25.00	25.00	25.00	30.09	30.00	33.33	28.20
25th Percentile	50.00	50.00	50.00	50.00	50.00	50.00	50.00	50.00	50.00
50th Percentile (Median)	66.67	66.67	66.67	66.67	66.67	68.42	68.42	70.90	67.63
75th Percentile	87.50	85.71	87.87	88.89	85.71	88.89	90.00	90.91	88.19
90th Percentile	100.00	100.00	100.00	100.00	100.00	100.00	100.00	100.00	100.00
# Units	478	510	488	481	455	490	494	472	484

If the number of units or hospitals is less than five, comparison data are suppressed to maintain confidentiality. If the number of units or hospitals is less than 20, comparison data may vary substantially over the time period and should be used with caution. For additional information, please refer to NDNQI reference documents.

Phelps Memorial Hospital

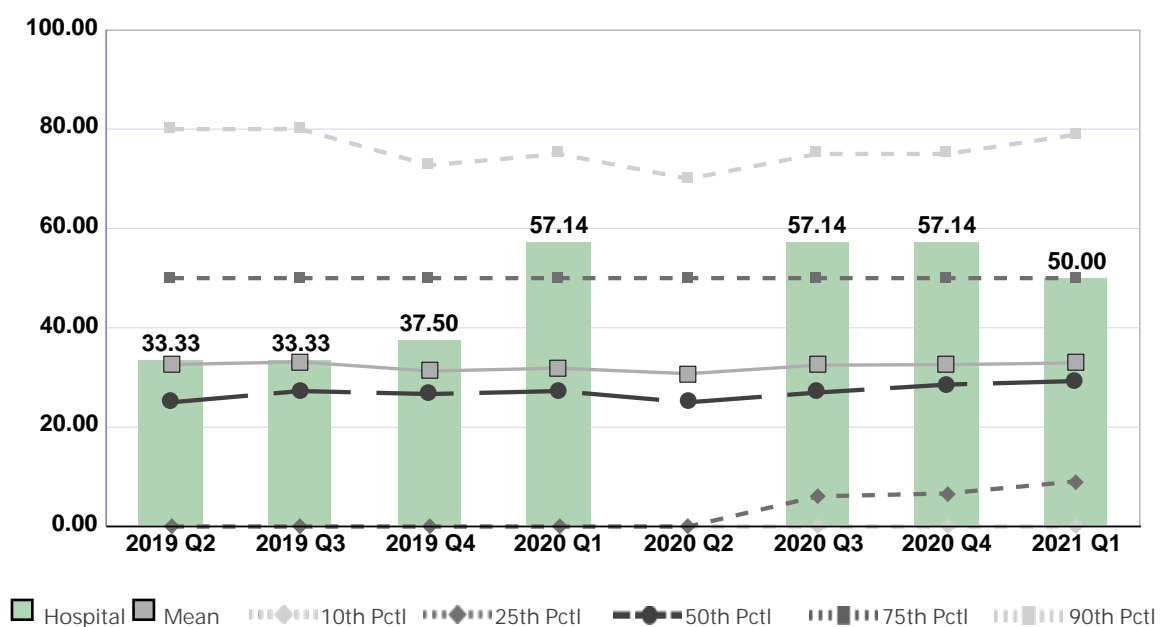
Compared by: All Hospitals

Peer Group: All Hospitals

Unit Type: Procedural Unit

Unit: Wound Clinic

Measure: Percent of Direct Care RNs with Specialty Nursing Certification



Quarter	2019 Q2	2019 Q3	2019 Q4	2020 Q1	2020 Q2	2020 Q3	2020 Q4	2021 Q1	Average
Unit	33.33	33.33	37.50	57.14	No Data	57.14	57.14	50.00	46.51
Mean	32.62	33.13	31.29	31.88	30.76	32.48	32.59	32.93	32.21
Standard Deviation	30.60	30.66	29.64	29.30	29.03	29.55	28.95	28.92	29.58
10th Percentile	0.00	0.00	0.00	0.00	0.00	0.00	0.00	0.00	0.00
25th Percentile	0.00	0.00	0.00	0.00	0.00	6.07	6.67	9.09	2.73
50th Percentile (Median)	25.00	27.27	26.67	27.27	25.00	26.97	28.57	29.29	27.00
75th Percentile	50.00	50.00	50.00	50.00	50.00	50.00	50.00	50.00	50.00
90th Percentile	80.00	80.00	72.73	75.00	70.00	75.00	75.00	78.89	75.83
# Units	468	500	484	476	446	468	475	450	471

If the number of units or hospitals is less than five, comparison data are suppressed to maintain confidentiality. If the number of units or hospitals is less than 20, comparison data may vary substantially over the time period and should be used with caution. For additional information, please refer to NDNQI reference documents.

Phelps Memorial Hospital

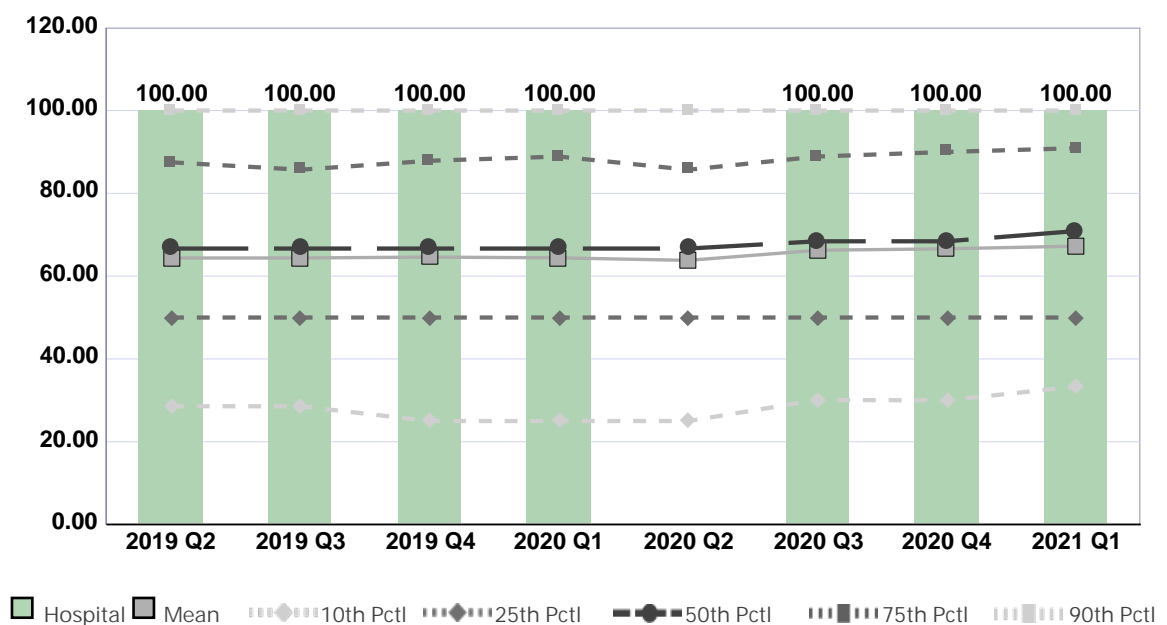
Compared by: All Hospitals

Peer Group: All Hospitals

Unit Type: Procedural Unit

Unit: Hyperbaric

Measure: Percent of Direct Care RNs with BSN, MSN, or PhD



Quarter	2019 Q2	2019 Q3	2019 Q4	2020 Q1	2020 Q2	2020 Q3	2020 Q4	2021 Q1	Average
Unit	100.00	100.00	100.00	100.00	No Data	100.00	100.00	100.00	100.00
Mean	64.38	64.39	64.60	64.42	63.81	66.26	66.60	67.25	65.21
Standard Deviation	27.30	26.66	27.93	27.79	27.65	26.93	27.52	27.17	27.37
10th Percentile	28.57	28.57	25.00	25.00	25.00	30.09	30.00	33.33	28.20
25th Percentile	50.00	50.00	50.00	50.00	50.00	50.00	50.00	50.00	50.00
50th Percentile (Median)	66.67	66.67	66.67	66.67	66.67	68.42	68.42	70.90	67.63
75th Percentile	87.50	85.71	87.87	88.89	85.71	88.89	90.00	90.91	88.19
90th Percentile	100.00	100.00	100.00	100.00	100.00	100.00	100.00	100.00	100.00
# Units	478	510	488	481	455	490	494	472	484

If the number of units or hospitals is less than five, comparison data are suppressed to maintain confidentiality. If the number of units or hospitals is less than 20, comparison data may vary substantially over the time period and should be used with caution. For additional information, please refer to NDNQI reference documents.

Phelps Memorial Hospital

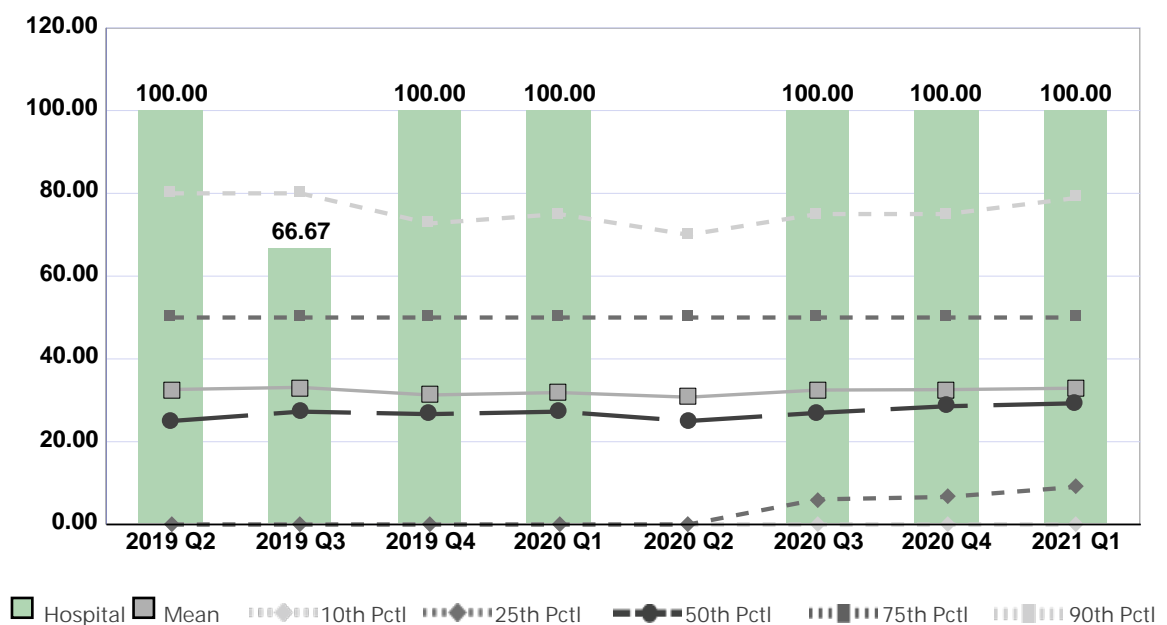
Compared by: All Hospitals

Peer Group: All Hospitals

Unit Type: Procedural Unit

Unit: Hyperbaric

Measure: Percent of Direct Care RNs with Specialty Nursing Certification



Quarter	2019 Q2	2019 Q3	2019 Q4	2020 Q1	2020 Q2	2020 Q3	2020 Q4	2021 Q1	Average
Unit	100.00	66.67	100.00	100.00	No Data	100.00	100.00	100.00	95.24
Mean	32.62	33.13	31.29	31.88	30.76	32.48	32.59	32.93	32.21
Standard Deviation	30.60	30.66	29.64	29.30	29.03	29.55	28.95	28.92	29.58
10th Percentile	0.00	0.00	0.00	0.00	0.00	0.00	0.00	0.00	0.00
25th Percentile	0.00	0.00	0.00	0.00	0.00	6.07	6.67	9.09	2.73
50th Percentile (Median)	25.00	27.27	26.67	27.27	25.00	26.97	28.57	29.29	27.00
75th Percentile	50.00	50.00	50.00	50.00	50.00	50.00	50.00	50.00	50.00
90th Percentile	80.00	80.00	72.73	75.00	70.00	75.00	75.00	78.89	75.83
# Units	468	500	484	476	446	468	475	450	471

If the number of units or hospitals is less than five, comparison data are suppressed to maintain confidentiality. If the number of units or hospitals is less than 20, comparison data may vary substantially over the time period and should be used with caution. For additional information, please refer to NDNQI reference documents.

Phelps Memorial Hospital

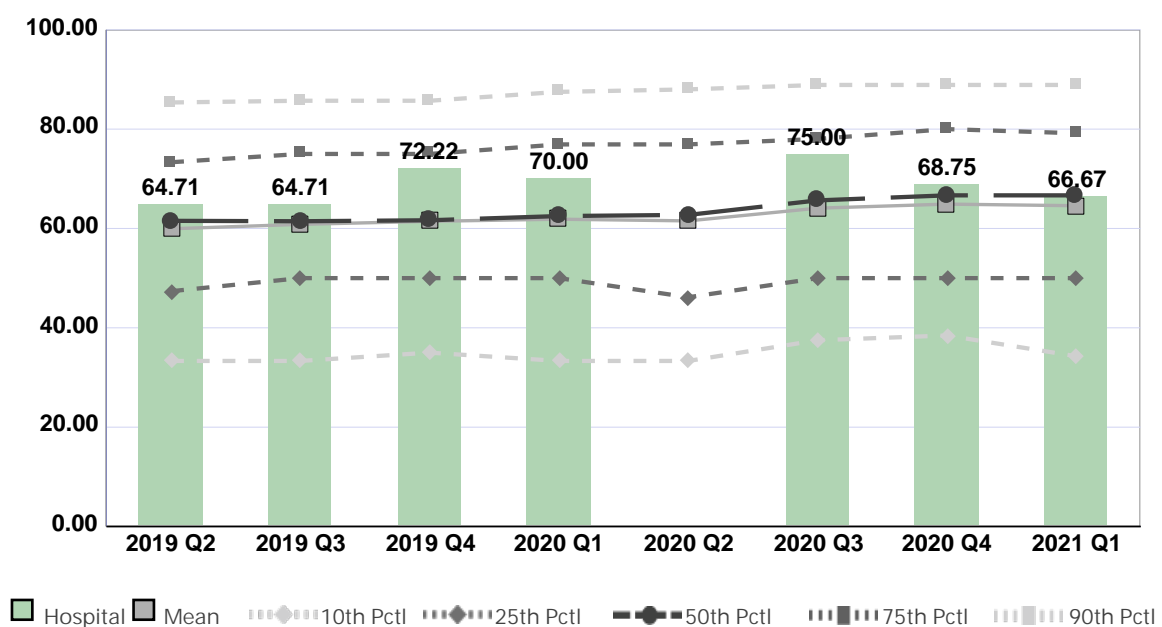
Compared by: All Hospitals

Peer Group: All Hospitals

Unit Type: OR-On call staff after hours

Unit: OR

Measure: Percent of Direct Care RNs with BSN, MSN, or PhD



Quarter	2019 Q2	2019 Q3	2019 Q4	2020 Q1	2020 Q2	2020 Q3	2020 Q4	2021 Q1	Average
Unit	64.71	64.71	72.22	70.00	No Data	75.00	68.75	66.67	68.86
Mean	59.94	60.83	61.44	61.87	61.53	64.08	64.91	64.58	62.40
Standard Deviation	20.20	20.39	19.46	20.45	20.90	20.38	20.68	20.18	20.33
10th Percentile	33.33	33.33	35.00	33.33	33.33	37.50	38.46	34.29	34.82
25th Percentile	47.37	50.00	50.00	50.00	46.15	50.00	50.00	50.00	49.19
50th Percentile (Median)	61.54	61.45	61.65	62.50	62.73	65.65	66.67	66.67	63.61
75th Percentile	73.33	75.00	75.00	76.92	76.92	78.02	80.00	79.17	76.80
90th Percentile	85.37	85.71	85.71	87.50	88.00	88.89	88.89	88.89	87.37
# Units	233	236	224	194	194	204	196	197	210

If the number of units or hospitals is less than five, comparison data are suppressed to maintain confidentiality. If the number of units or hospitals is less than 20, comparison data may vary substantially over the time period and should be used with caution. For additional information, please refer to NDNQI reference documents.

Phelps Memorial Hospital

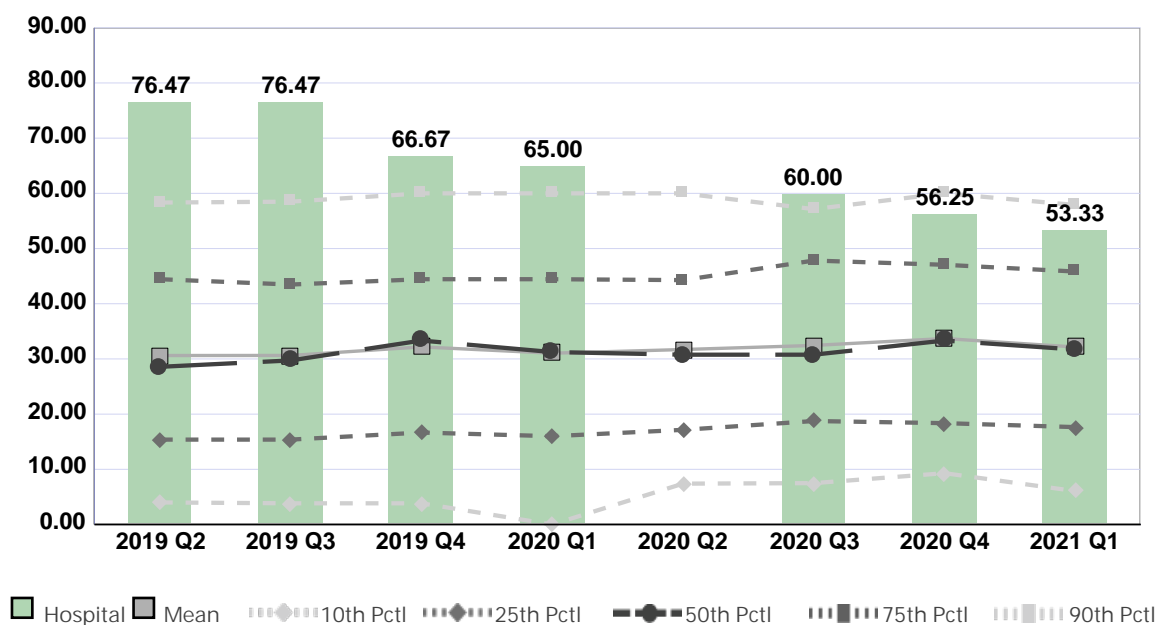
Compared by: All Hospitals

Peer Group: All Hospitals

Unit Type: OR-On call staff after hours

Unit: OR

Measure: Percent of Direct Care RNs with Specialty Nursing Certification



Quarter	2019 Q2	2019 Q3	2019 Q4	2020 Q1	2020 Q2	2020 Q3	2020 Q4	2021 Q1	Average
Unit	76.47	76.47	66.67	65.00	No Data	60.00	56.25	53.33	64.88
Mean	30.62	30.63	32.18	31.04	31.70	32.45	33.70	32.16	31.81
Standard Deviation	19.59	19.95	20.83	20.51	19.61	19.63	20.07	19.05	19.91
10th Percentile	4.00	3.85	3.85	0.00	7.41	7.50	9.30	6.06	5.25
25th Percentile	15.38	15.38	16.67	16.00	17.16	18.75	18.37	17.65	16.92
50th Percentile (Median)	28.57	29.73	33.33	31.25	30.77	30.77	33.33	31.71	31.18
75th Percentile	44.44	43.48	44.44	44.44	44.28	47.83	47.06	45.83	45.23
90th Percentile	58.33	58.49	60.00	60.00	60.00	57.14	60.00	57.89	58.98
# Units	226	223	218	191	188	194	185	186	201

If the number of units or hospitals is less than five, comparison data are suppressed to maintain confidentiality. If the number of units or hospitals is less than 20, comparison data may vary substantially over the time period and should be used with caution. For additional information, please refer to NDNQI reference documents.

Phelps Memorial Hospital

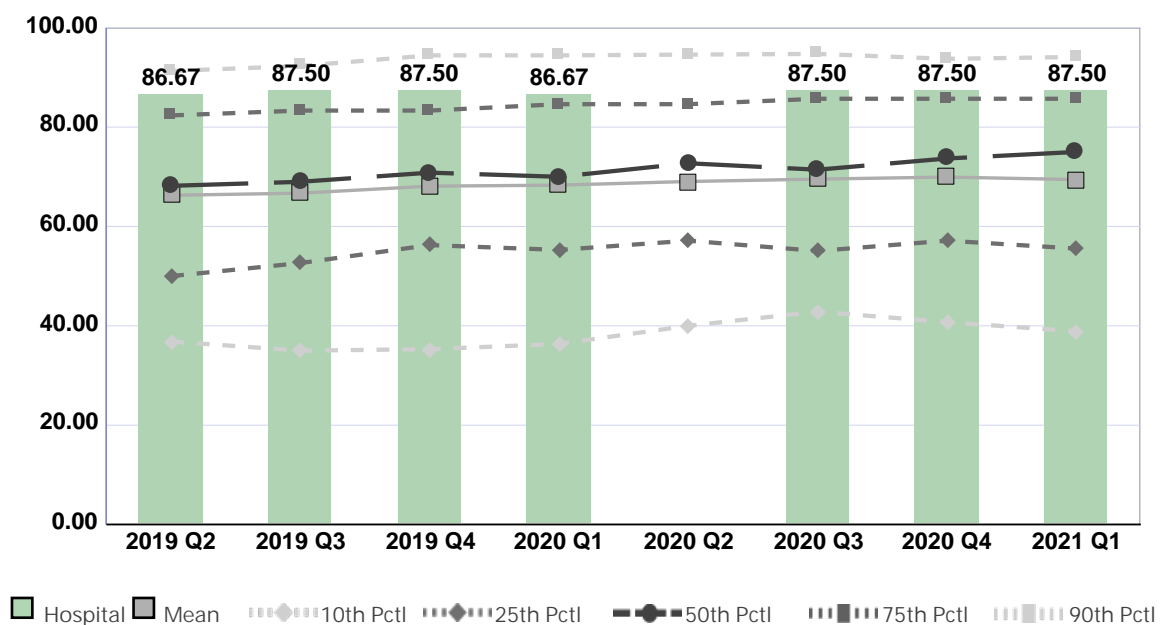
Compared by: All Hospitals

Peer Group: All Hospitals

Unit Type: Post-anesthesia care unit

Unit: PACU

Measure: Percent of Direct Care RNs with BSN, MSN, or PhD



Quarter	2019 Q2	2019 Q3	2019 Q4	2020 Q1	2020 Q2	2020 Q3	2020 Q4	2021 Q1	Average
Unit	86.67	87.50	87.50	86.67	No Data	87.50	87.50	87.50	87.26
Mean	66.28	66.70	68.11	68.32	69.05	69.54	69.95	69.44	68.42
Standard Deviation	20.63	21.75	21.39	21.35	20.65	20.62	20.25	21.19	20.98
10th Percentile	36.84	35.00	35.29	36.36	40.00	42.86	40.74	38.89	38.25
25th Percentile	50.00	52.63	56.25	55.28	57.14	55.07	57.14	55.56	54.88
50th Percentile (Median)	68.18	68.99	70.83	70.00	72.73	71.43	73.68	75.00	71.36
75th Percentile	82.35	83.33	83.33	84.62	84.62	85.71	85.71	85.71	84.42
90th Percentile	91.30	92.31	94.44	94.44	94.59	94.74	93.75	94.12	93.71
# Units	323	326	331	288	273	303	301	277	303

If the number of units or hospitals is less than five, comparison data are suppressed to maintain confidentiality. If the number of units or hospitals is less than 20, comparison data may vary substantially over the time period and should be used with caution. For additional information, please refer to NDNQI reference documents.

Phelps Memorial Hospital

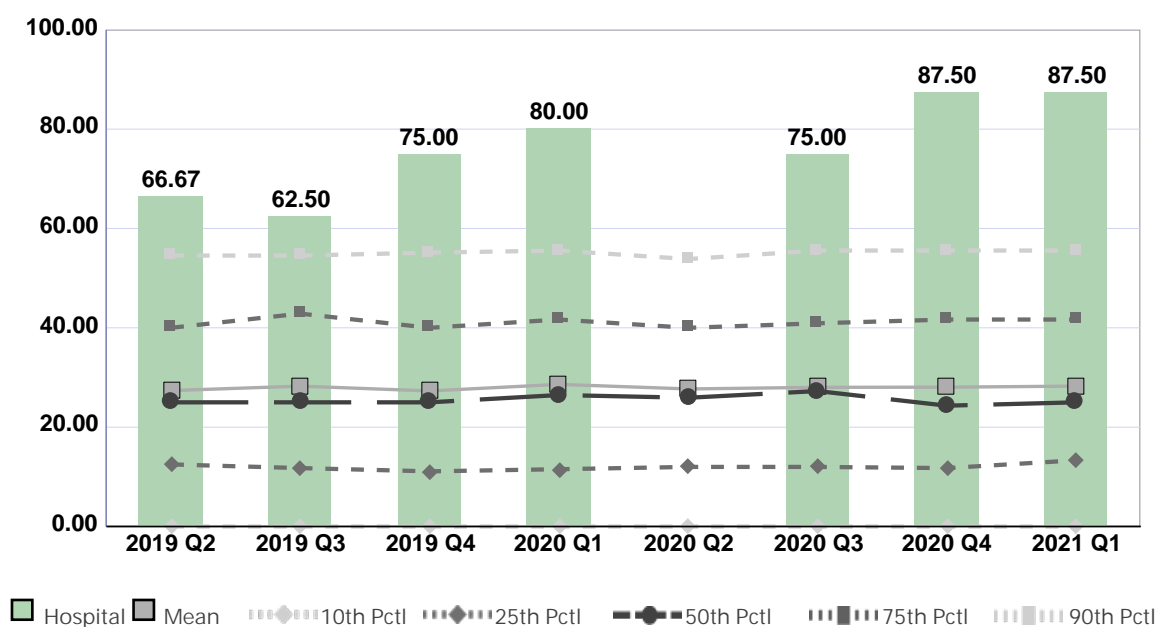
Compared by: All Hospitals

Peer Group: All Hospitals

Unit Type: Post-anesthesia care unit

Unit: PACU

Measure: Percent of Direct Care RNs with Specialty Nursing Certification



Quarter	2019 Q2	2019 Q3	2019 Q4	2020 Q1	2020 Q2	2020 Q3	2020 Q4	2021 Q1	Average
Unit	66.67	62.50	75.00	80.00	No Data	75.00	87.50	87.50	76.31
Mean	27.37	28.26	27.29	28.62	27.70	28.02	28.05	28.27	27.95
Standard Deviation	19.79	21.06	20.76	20.83	20.18	20.43	20.07	19.94	20.38
10th Percentile	0.00	0.00	0.00	0.00	0.00	0.00	0.00	0.00	0.00
25th Percentile	12.50	11.76	11.11	11.54	12.00	12.00	11.76	13.33	12.00
50th Percentile (Median)	25.00	25.00	25.00	26.47	25.93	27.27	24.32	25.00	25.50
75th Percentile	40.00	42.86	40.00	41.67	40.00	40.91	41.67	41.67	41.10
90th Percentile	54.55	54.55	55.13	55.56	53.85	55.56	55.56	55.56	55.04
# Units	313	313	324	282	265	293	293	269	294

If the number of units or hospitals is less than five, comparison data are suppressed to maintain confidentiality. If the number of units or hospitals is less than 20, comparison data may vary substantially over the time period and should be used with caution. For additional information, please refer to NDNQI reference documents.

Phelps Memorial Hospital

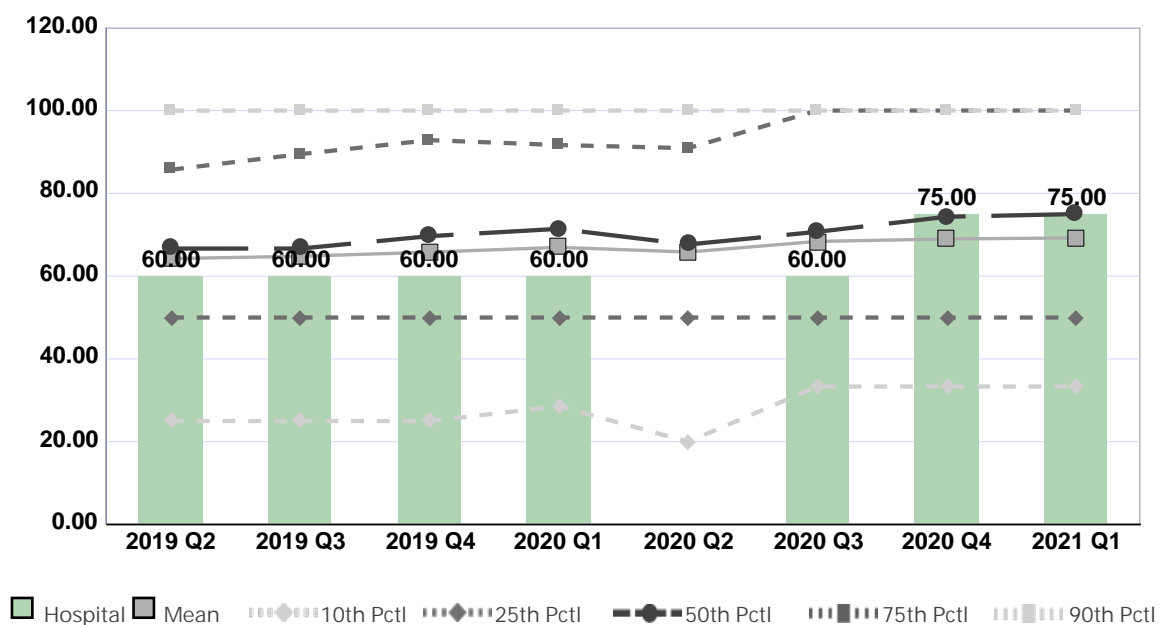
Compared by: All Hospitals

Peer Group: All Hospitals

Unit Type: Cardiac Services

Unit: Outpatient Cardiology

Measure: Percent of Direct Care RNs with BSN, MSN, or PhD



Quarter	2019 Q2	2019 Q3	2019 Q4	2020 Q1	2020 Q2	2020 Q3	2020 Q4	2021 Q1	Average
Unit	60.00	60.00	60.00	60.00	No Data	60.00	75.00	75.00	64.29
Mean	64.24	64.79	65.79	66.96	65.82	68.39	68.97	69.25	66.78
Standard Deviation	29.03	29.34	29.39	28.86	29.75	28.35	28.40	28.50	28.95
10th Percentile	25.00	25.00	25.00	28.57	20.00	33.33	33.33	33.33	27.95
25th Percentile	50.00	50.00	50.00	50.00	50.00	50.00	50.00	50.00	50.00
50th Percentile (Median)	66.67	66.67	69.67	71.43	67.65	70.71	74.34	75.00	70.27
75th Percentile	85.71	89.47	92.86	91.67	90.91	100.00	100.00	100.00	93.83
90th Percentile	100.00	100.00	100.00	100.00	100.00	100.00	100.00	100.00	100.00
# Units	283	293	298	282	265	290	292	291	287

If the number of units or hospitals is less than five, comparison data are suppressed to maintain confidentiality. If the number of units or hospitals is less than 20, comparison data may vary substantially over the time period and should be used with caution. For additional information, please refer to NDNQI reference documents.

Phelps Memorial Hospital

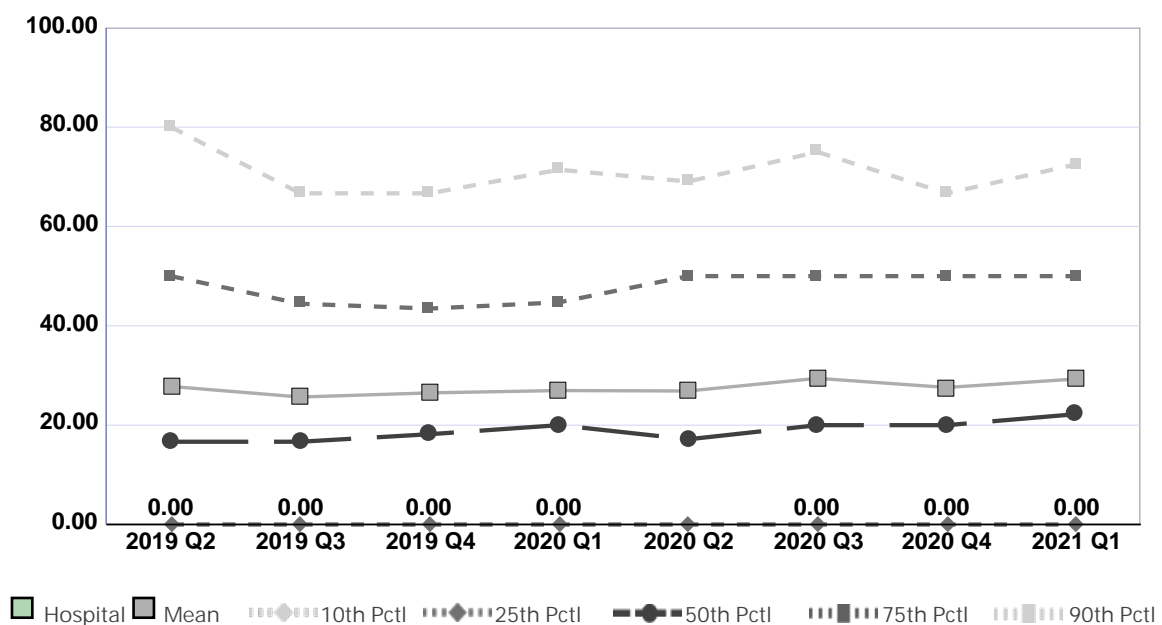
Compared by: All Hospitals

Peer Group: All Hospitals

Unit Type: Cardiac Services

Unit: Outpatient Cardiology

Measure: Percent of Direct Care RNs with Specialty Nursing Certification



Quarter	2019 Q2	2019 Q3	2019 Q4	2020 Q1	2020 Q2	2020 Q3	2020 Q4	2021 Q1	Average
Unit	0.00	0.00	0.00	0.00	No Data	0.00	0.00	0.00	0.00
Mean	27.80	25.67	26.50	26.97	26.88	29.43	27.60	29.29	27.52
Standard Deviation	31.35	29.06	28.33	28.64	29.10	30.60	28.68	29.30	29.38
10th Percentile	0.00	0.00	0.00	0.00	0.00	0.00	0.00	0.00	0.00
25th Percentile	0.00	0.00	0.00	0.00	0.00	0.00	0.00	0.00	0.00
50th Percentile (Median)	16.67	16.67	18.18	20.00	17.16	20.00	20.00	22.22	18.86
75th Percentile	50.00	44.44	43.48	44.73	50.00	50.00	50.00	50.00	47.83
90th Percentile	80.00	66.67	66.67	71.43	69.05	75.00	66.67	72.50	71.00
# Units	279	289	293	276	260	281	285	280	280

If the number of units or hospitals is less than five, comparison data are suppressed to maintain confidentiality. If the number of units or hospitals is less than 20, comparison data may vary substantially over the time period and should be used with caution. For additional information, please refer to NDNQI reference documents.

Phelps Memorial Hospital

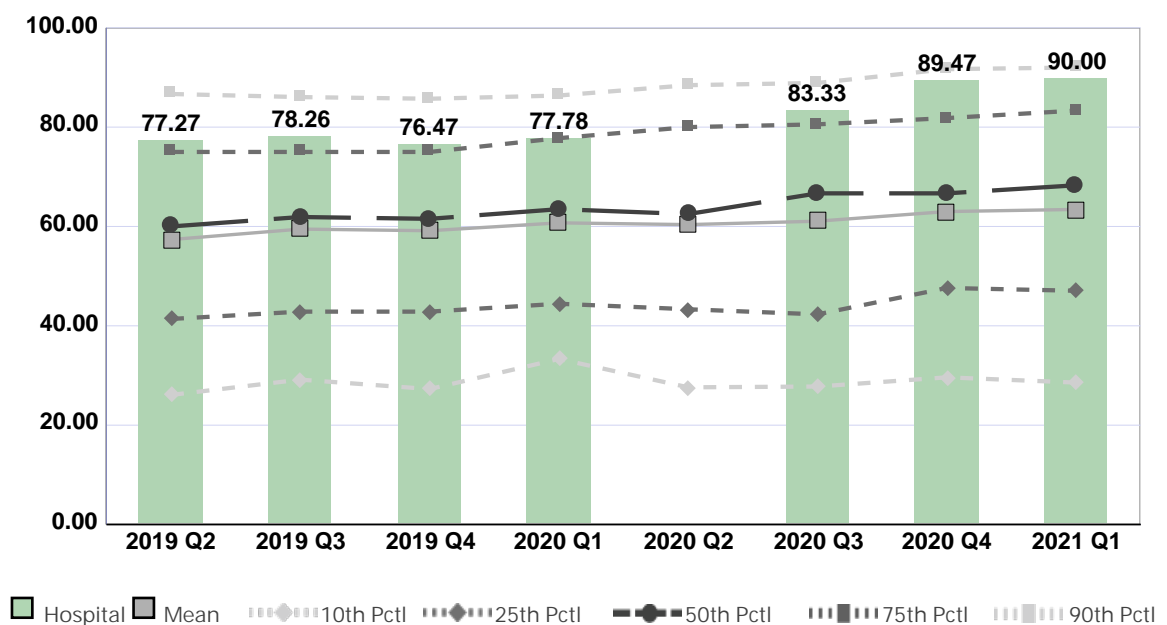
Compared by: All Hospitals

Peer Group: All Hospitals

Unit Type: Pre/Postoperative excludes Phase I

Unit: ASU

Measure: Percent of Direct Care RNs with BSN, MSN, or PhD



Quarter	2019 Q2	2019 Q3	2019 Q4	2020 Q1	2020 Q2	2020 Q3	2020 Q4	2021 Q1	Average
Unit	77.27	78.26	76.47	77.78	No Data	83.33	89.47	90.00	81.80
Mean	57.36	59.47	59.14	60.73	60.38	61.06	63.00	63.43	60.57
Standard Deviation	23.00	21.27	21.88	21.31	23.52	23.51	23.72	23.88	22.76
10th Percentile	26.09	29.17	27.27	33.33	27.62	27.78	29.63	28.57	28.68
25th Percentile	41.38	42.86	42.86	44.44	43.33	42.31	47.62	47.06	43.98
50th Percentile (Median)	60.00	61.90	61.54	63.48	62.50	66.67	66.67	68.29	63.88
75th Percentile	75.00	75.00	75.00	77.78	80.00	80.56	81.82	83.33	78.56
90th Percentile	86.67	86.05	85.71	86.36	88.44	88.89	91.67	92.00	88.22
# Units	189	186	182	172	150	175	178	171	175

If the number of units or hospitals is less than five, comparison data are suppressed to maintain confidentiality. If the number of units or hospitals is less than 20, comparison data may vary substantially over the time period and should be used with caution. For additional information, please refer to NDNQI reference documents.

Phelps Memorial Hospital

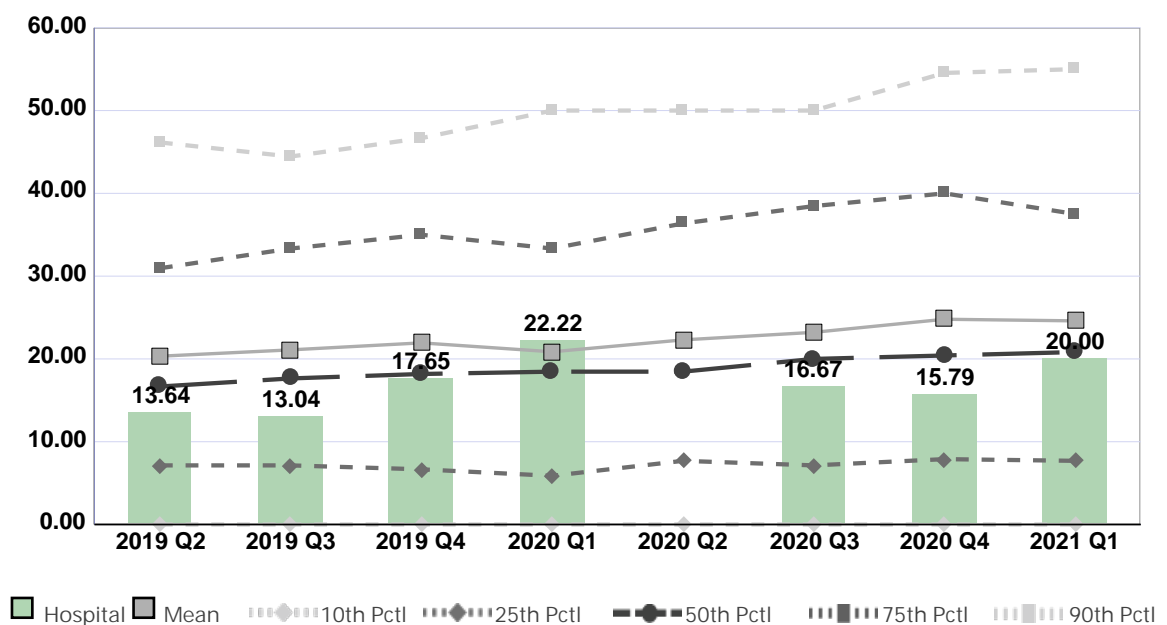
Compared by: All Hospitals

Peer Group: All Hospitals

Unit Type: Pre/Postoperative excludes Phase I

Unit: ASU

Measure: Percent of Direct Care RNs with Specialty Nursing Certification



Quarter	2019 Q2	2019 Q3	2019 Q4	2020 Q1	2020 Q2	2020 Q3	2020 Q4	2021 Q1	Average
Unit	13.64	13.04	17.65	22.22	No Data	16.67	15.79	20.00	17.00
Mean	20.33	21.09	21.94	20.86	22.30	23.21	24.79	24.60	22.39
Standard Deviation	17.86	17.60	19.36	17.88	19.17	18.93	20.41	20.09	18.91
10th Percentile	0.00	0.00	0.00	0.00	0.00	0.00	0.00	0.00	0.00
25th Percentile	7.14	7.14	6.67	5.88	7.69	7.14	7.90	7.69	7.16
50th Percentile (Median)	16.67	17.65	18.18	18.47	18.47	20.00	20.42	20.83	18.83
75th Percentile	30.95	33.33	35.00	33.33	36.36	38.46	40.00	37.50	35.62
90th Percentile	46.15	44.44	46.67	50.00	50.00	50.00	54.55	55.00	49.60
# Units	183	179	179	168	148	166	172	167	170

If the number of units or hospitals is less than five, comparison data are suppressed to maintain confidentiality. If the number of units or hospitals is less than 20, comparison data may vary substantially over the time period and should be used with caution. For additional information, please refer to NDNQI reference documents.

Phelps Memorial Hospital

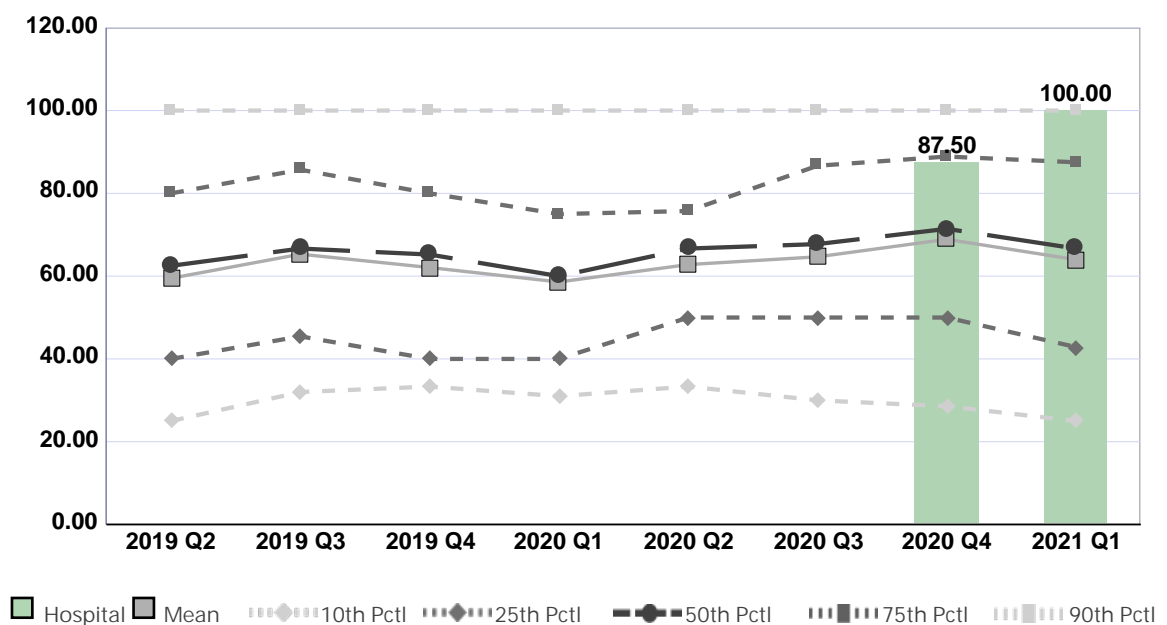
Compared by: All Hospitals

Peer Group: All Hospitals

Unit Type: Vascular Access RNs

Unit: Vascular Access Team

Measure: Percent of Direct Care RNs with BSN, MSN, or PhD



Quarter	2019 Q2	2019 Q3	2019 Q4	2020 Q1	2020 Q2	2020 Q3	2020 Q4	2021 Q1	Average
Unit	No Data	No Data	No Data	No Data	No Data	No Data	87.50	100.00	93.75
Mean	59.49	65.31	62.08	58.59	62.80	64.66	68.89	63.98	63.23
Standard Deviation	27.10	24.83	25.03	25.46	22.95	25.78	25.81	27.51	25.56
10th Percentile	25.00	32.00	33.33	31.00	33.33	30.00	28.57	25.00	29.78
25th Percentile	40.00	45.45	40.00	40.00	50.00	50.00	50.00	42.86	44.79
50th Percentile (Median)	62.50	66.67	65.22	60.00	66.67	67.74	71.43	66.67	65.86
75th Percentile	80.00	85.71	80.00	75.00	75.74	86.67	88.89	87.50	82.44
90th Percentile	100.00	100.00	100.00	100.00	100.00	100.00	100.00	100.00	100.00
# Units	65	66	65	60	56	63	64	63	63

If the number of units or hospitals is less than five, comparison data are suppressed to maintain confidentiality. If the number of units or hospitals is less than 20, comparison data may vary substantially over the time period and should be used with caution. For additional information, please refer to NDNQI reference documents.

Phelps Memorial Hospital

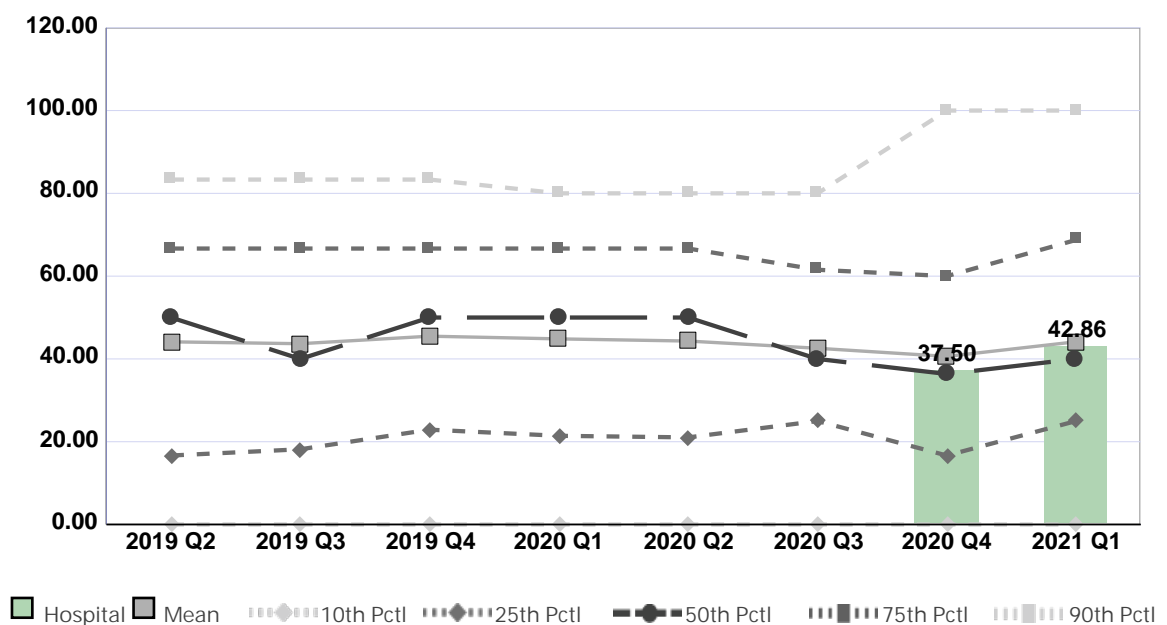
Compared by: All Hospitals

Peer Group: All Hospitals

Unit Type: Vascular Access RNs

Unit: Vascular Access Team

Measure: Percent of Direct Care RNs with Specialty Nursing Certification



Quarter	2019 Q2	2019 Q3	2019 Q4	2020 Q1	2020 Q2	2020 Q3	2020 Q4	2021 Q1	Average
Unit	No Data	No Data	No Data	No Data	No Data	No Data	37.50	42.86	40.18
Mean	44.13	43.68	45.49	44.84	44.32	42.58	40.61	44.14	43.73
Standard Deviation	29.11	29.17	28.38	27.95	28.80	30.16	31.96	31.34	29.61
10th Percentile	0.00	0.00	0.00	0.00	0.00	0.00	0.00	0.00	0.00
25th Percentile	16.67	18.18	22.92	21.43	21.05	25.00	16.67	25.00	20.86
50th Percentile (Median)	50.00	40.00	50.00	50.00	50.00	40.00	36.36	40.00	44.55
75th Percentile	66.67	66.67	66.67	66.67	66.67	61.54	60.00	68.75	65.45
90th Percentile	83.33	83.33	83.33	80.00	80.00	80.00	100.00	100.00	86.25
# Units	62	65	64	58	55	62	61	59	61

If the number of units or hospitals is less than five, comparison data are suppressed to maintain confidentiality. If the number of units or hospitals is less than 20, comparison data may vary substantially over the time period and should be used with caution. For additional information, please refer to NDNQI reference documents.

Phelps Memorial Hospital

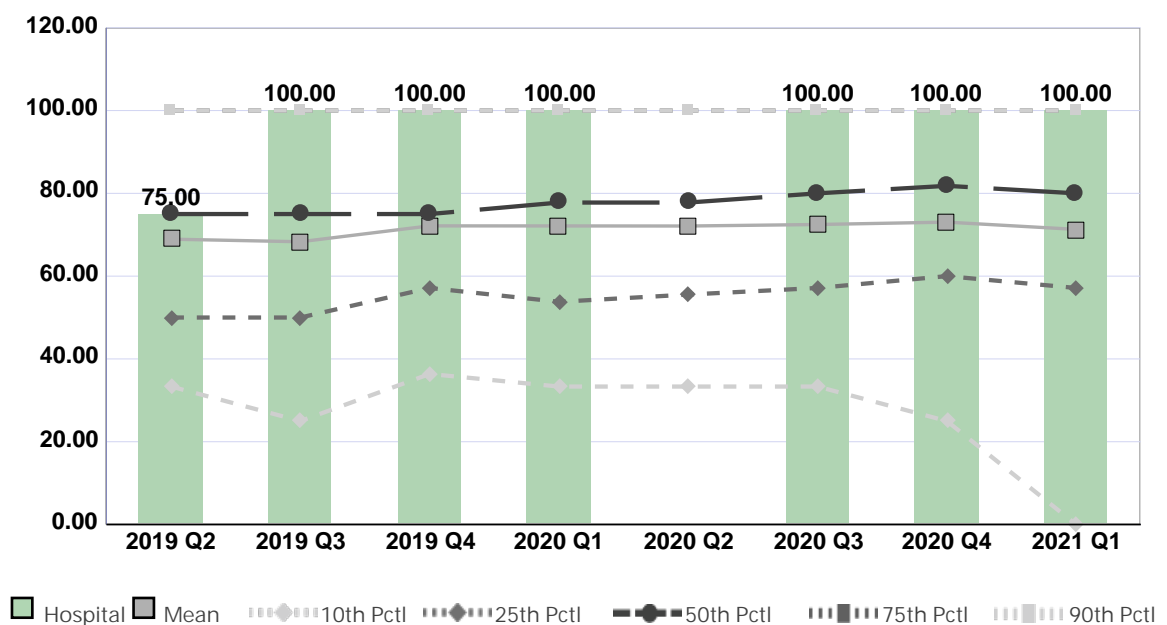
Compared by: All Hospitals

Peer Group: All Hospitals

Unit Type: Specialty Care

Unit: Pain Management

Measure: Percent of Direct Care RNs with BSN, MSN, or PhD



Quarter	2019 Q2	2019 Q3	2019 Q4	2020 Q1	2020 Q2	2020 Q3	2020 Q4	2021 Q1	Average
Unit	75.00	100.00	100.00	100.00	No Data	100.00	100.00	100.00	96.43
Mean	68.93	68.31	72.15	72.13	72.11	72.47	73.05	71.30	71.31
Standard Deviation	28.75	29.43	27.94	28.14	27.99	28.57	30.33	31.46	29.08
10th Percentile	33.33	25.00	36.36	33.33	33.33	33.33	25.00	0.00	27.46
25th Percentile	50.00	50.00	57.14	53.80	55.56	57.14	60.00	57.14	55.10
50th Percentile (Median)	75.00	75.00	75.00	77.78	77.78	80.00	81.82	80.00	77.80
75th Percentile	100.00	100.00	100.00	100.00	100.00	100.00	100.00	100.00	100.00
90th Percentile	100.00	100.00	100.00	100.00	100.00	100.00	100.00	100.00	100.00
# Units	366	419	426	424	432	502	461	420	431

If the number of units or hospitals is less than five, comparison data are suppressed to maintain confidentiality. If the number of units or hospitals is less than 20, comparison data may vary substantially over the time period and should be used with caution. For additional information, please refer to NDNQI reference documents.

Phelps Memorial Hospital

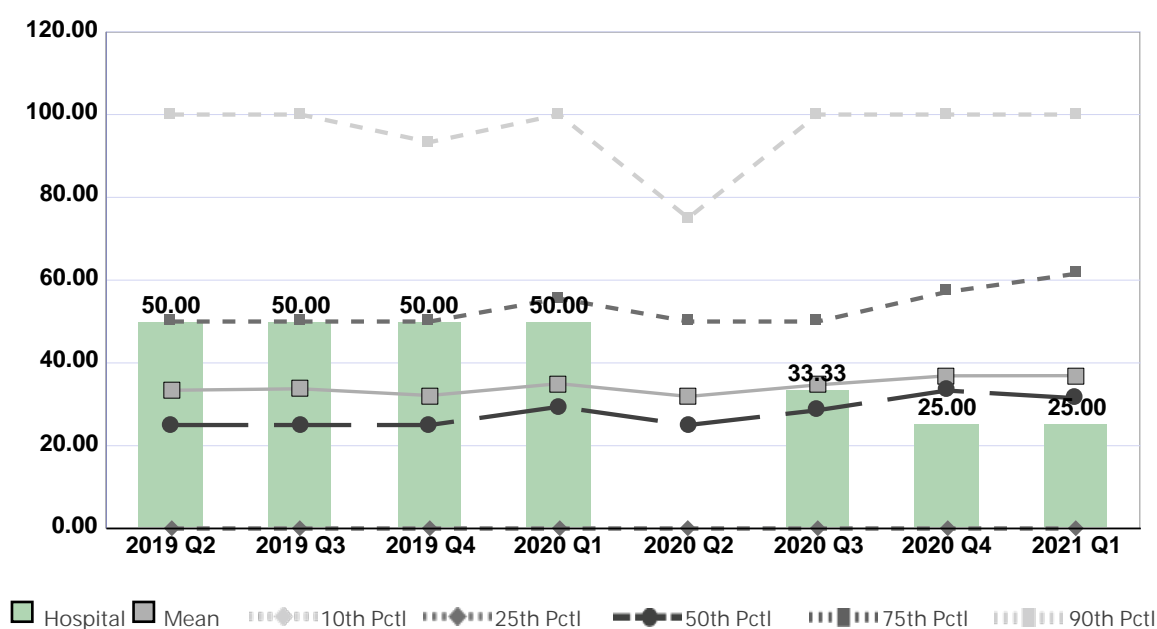
Compared by: All Hospitals

Peer Group: All Hospitals

Unit Type: Specialty Care

Unit: Pain Management

Measure: Percent of Direct Care RNs with Specialty Nursing Certification



Quarter	2019 Q2	2019 Q3	2019 Q4	2020 Q1	2020 Q2	2020 Q3	2020 Q4	2021 Q1	Average
Unit	50.00	50.00	50.00	50.00	No Data	33.33	25.00	25.00	40.48
Mean	33.40	33.76	32.14	35.00	31.90	34.70	36.89	36.93	34.34
Standard Deviation	34.01	33.43	32.60	32.96	31.26	33.28	33.96	35.08	33.32
10th Percentile	0.00	0.00	0.00	0.00	0.00	0.00	0.00	0.00	0.00
25th Percentile	0.00	0.00	0.00	0.00	0.00	0.00	0.00	0.00	0.00
50th Percentile (Median)	25.00	25.00	25.00	29.41	25.00	28.57	33.33	31.48	27.85
75th Percentile	50.00	50.00	50.00	55.56	50.00	50.00	57.14	61.54	53.03
90th Percentile	100.00	100.00	93.33	100.00	75.00	100.00	100.00	100.00	96.04
# Units	365	418	424	421	426	484	455	416	426

If the number of units or hospitals is less than five, comparison data are suppressed to maintain confidentiality. If the number of units or hospitals is less than 20, comparison data may vary substantially over the time period and should be used with caution. For additional information, please refer to NDNQI reference documents.