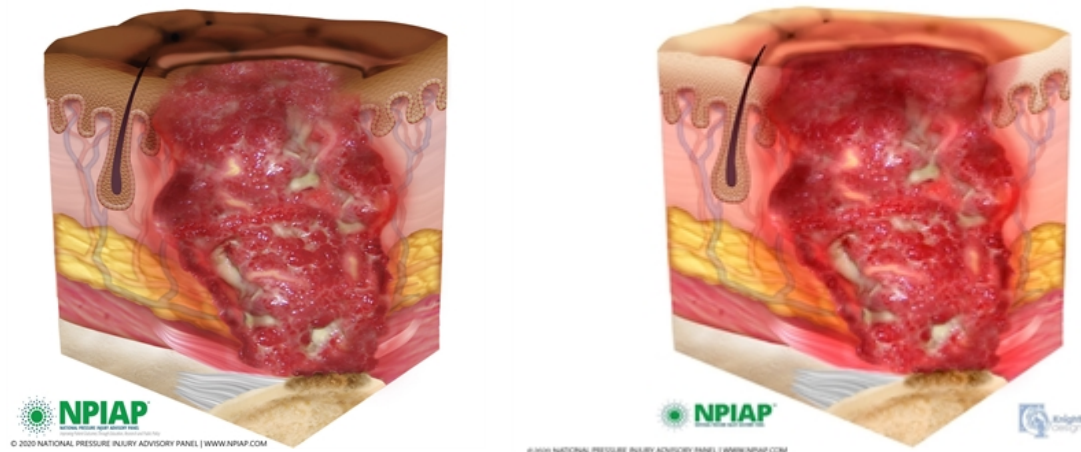


# Stage 4 Pressure Injuries

## **Stage 4 Pressure Injury: Full-thickness skin and tissue loss**

Full-thickness skin and tissue loss with exposed or directly palpable fascia, muscle, tendon, ligament, cartilage or bone in the ulcer. Slough and/or eschar may be visible. Epibole (rolled edges), undermining and/or tunneling often occur. Depth varies by anatomical location. If slough or eschar obscures the extent of tissue loss this is an Unstageable Pressure Injury.

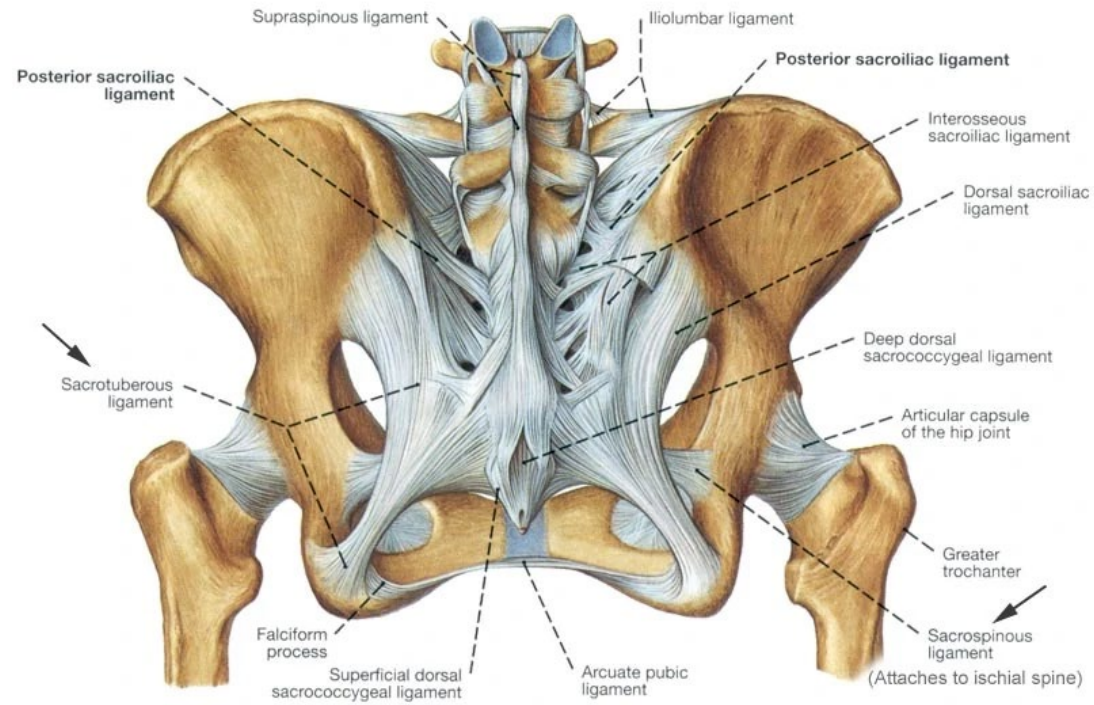
Stage 4 Pressure Injury



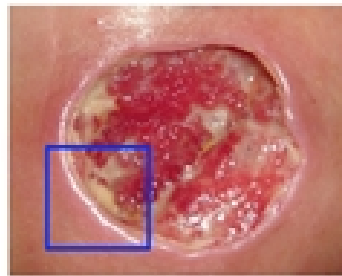




## Pelvis and Ligaments, Rear View, Female



### Stage 3 Pressure Injury with Epibole



Area of Focus



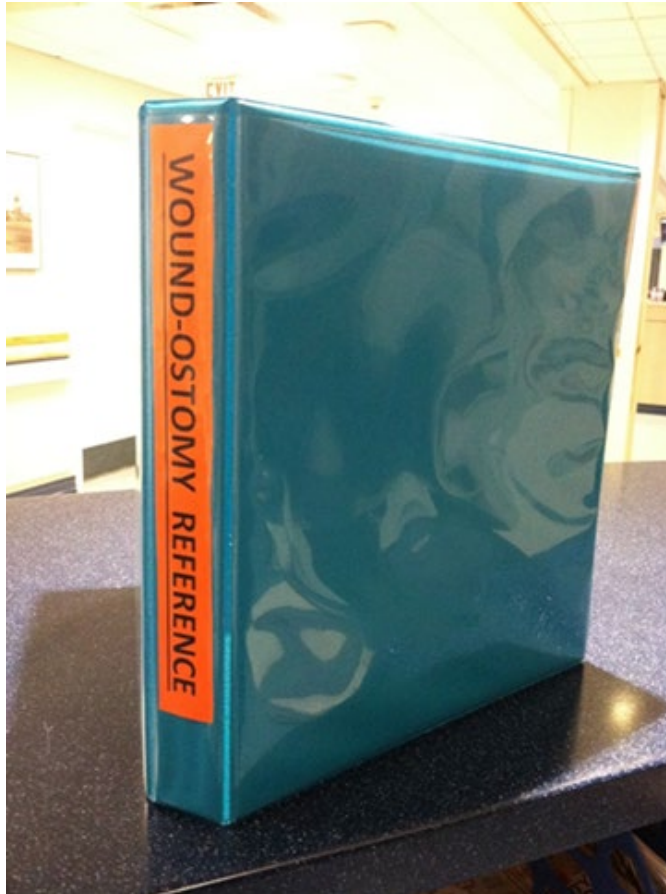
©2020 National Pressure Injury Advisory Panel | NPIAP.com



**TABLE 2.**  
Validation of Revised Staging System

Stage of Injury	Total Number of Responses	Stage 1*	Stage 2*	Stage 3*	Stage 4*	DTPi*	Unstageable Pi*	MDRPI*	MMPI*	Not a Pi*
4	314	0	0	0	94% <sup>a</sup>	0	3%	0	0	3%
4	290	0	19	2	56% <sup>a</sup>	0	0	0	0	21%
9	312	>1%	1%	0	0	0	>1%	>1%	0	95% <sup>a</sup>
5	307	>1%	>1%	>1%	0	97% <sup>a</sup>	>1%	0	0	>1%
9	306	0	0	0	0	0	0	5%	>1%	92% <sup>a</sup>
4	316	0	0	3%	86% <sup>a</sup>	0	6%	2%	0%	0%
2	304	0	70% <sup>a</sup>	22%	0	0	0	0	0	4%
3	314	0	8%	88% <sup>a</sup>	>1%	0	1%	>1%	0	>1%
9	309	1%	0	0	0	>1%	0	0	>1%	97% <sup>a</sup>
1	311	97% <sup>a</sup>	0	0	0	2%	0	0	0	0
9	310	0	0	0	0	>1%	0	0	0	99% <sup>a</sup>
6/7	303	0	>1%	>1%	>1%	>1%	33% <sup>a</sup>	62% <sup>a</sup>	0	2%
9	302	0	0	0	0	2%	0	0	0	97% <sup>a</sup>
2	298	4%	72% <sup>a</sup>	>1%	0	>1%	0	0	1%	21%
9	309	0	0	0	0	>1%	>1%	0	0	98% <sup>a</sup>
5	303	0	4%	11%	2%	79% <sup>a</sup>	1%	0	0	>1%
2/7	293	2%	42% <sup>a</sup>	0	0	1%	0	46% <sup>a</sup>	0	8%
9	299	>1%	0	0	>1%	0	3%	0	0	95%
6/7	292	>1%	0	0	0	>1%	22% <sup>a</sup>	73% <sup>a</sup>	0	2%
7/8	275	0	2%	1%	0	0	0	53% <sup>a</sup>	42% <sup>†</sup>	0%
1/7	287	79%	2%	0	0	3%	0	5%	0	9%
7/8	284	0	0	0	0	0	1%	19% <sup>a</sup>	77% <sup>†</sup>	2%
5	296	0	0	0	0	97% <sup>a</sup>	.1%	0	0	>1%
9	272	>1%	41%	2%	0	4%	0	5%	0	45% <sup>a</sup>
6	287	0	1%	5%	0	0	90% <sup>a</sup>	0	0	1%
9	278	1%	0	0	0	1%	0	0	0	96% <sup>a</sup>
9	284	0	0	0	0	0	>1%	0	0	99% <sup>a</sup>
4	277	0	0	0	91% <sup>a</sup>	1%	>1%	0	0	6%

# Resources



**Phelps Intranet**

**\***

**Patient care**

**\***

**Nursing**

**\***

**Standard of Care**

**\***

**Skin Care Mgment**