

Phelps Memorial Hospital

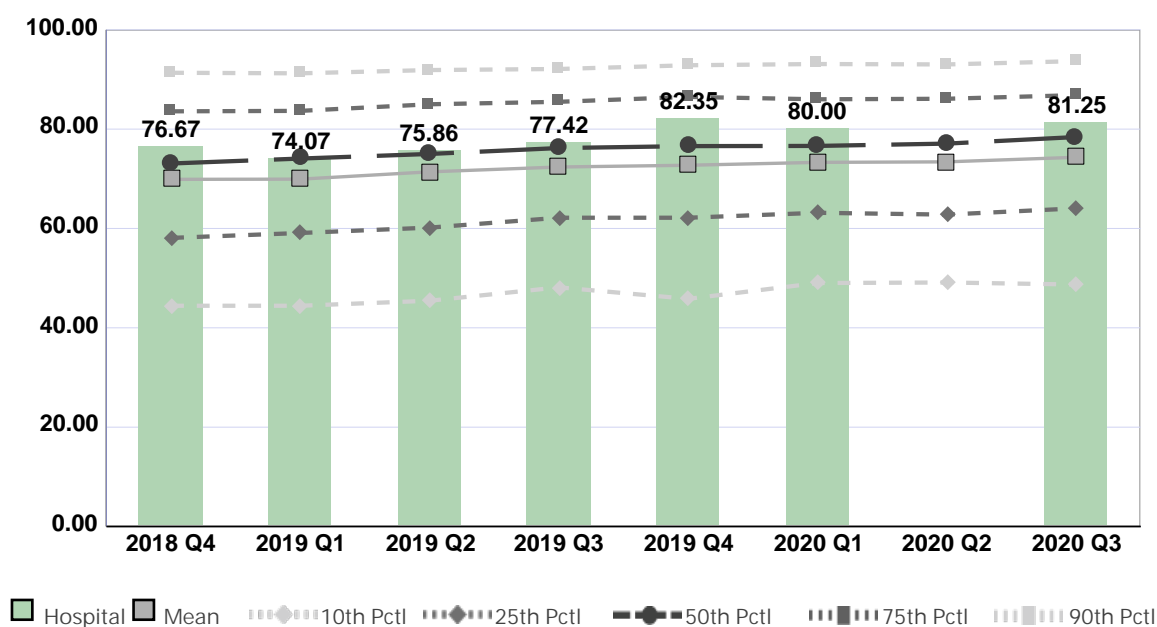
Compared by: All Hospitals

Peer Group: All Hospitals

Unit Type: Adult Critical Care

Unit: Critical Care

Measure: Percent of Direct Care RNs with BSN, MSN, or PhD



Quarter	2018 Q4	2019 Q1	2019 Q2	2019 Q3	2019 Q4	2020 Q1	2020 Q2	2020 Q3	Average
Unit	76.67	74.07	75.86	77.42	82.35	80.00	No Data	81.25	78.23
Mean	69.89	69.93	71.40	72.37	72.73	73.31	73.41	74.33	72.17
Standard Deviation	18.70	19.06	17.94	17.53	17.96	17.18	17.30	17.65	17.92
10th Percentile	44.44	44.44	45.45	48.15	45.83	49.02	49.12	48.72	46.90
25th Percentile	58.10	59.09	60.17	62.16	62.16	63.16	62.79	64.05	61.46
50th Percentile (Median)	73.08	74.07	75.00	76.19	76.58	76.62	77.08	78.40	75.88
75th Percentile	83.58	83.67	85.00	85.50	86.49	86.01	86.11	86.84	85.40
90th Percentile	91.34	91.23	91.89	92.11	92.86	93.10	93.02	93.68	92.40
# Units	960	915	916	926	898	788	745	788	867

If the number of units or hospitals is less than five, comparison data are suppressed to maintain confidentiality. If the number of units or hospitals is less than 20, comparison data may vary substantially over the time period and should be used with caution. For additional information, please refer to NDNQI reference documents.



Phelps Memorial Hospital

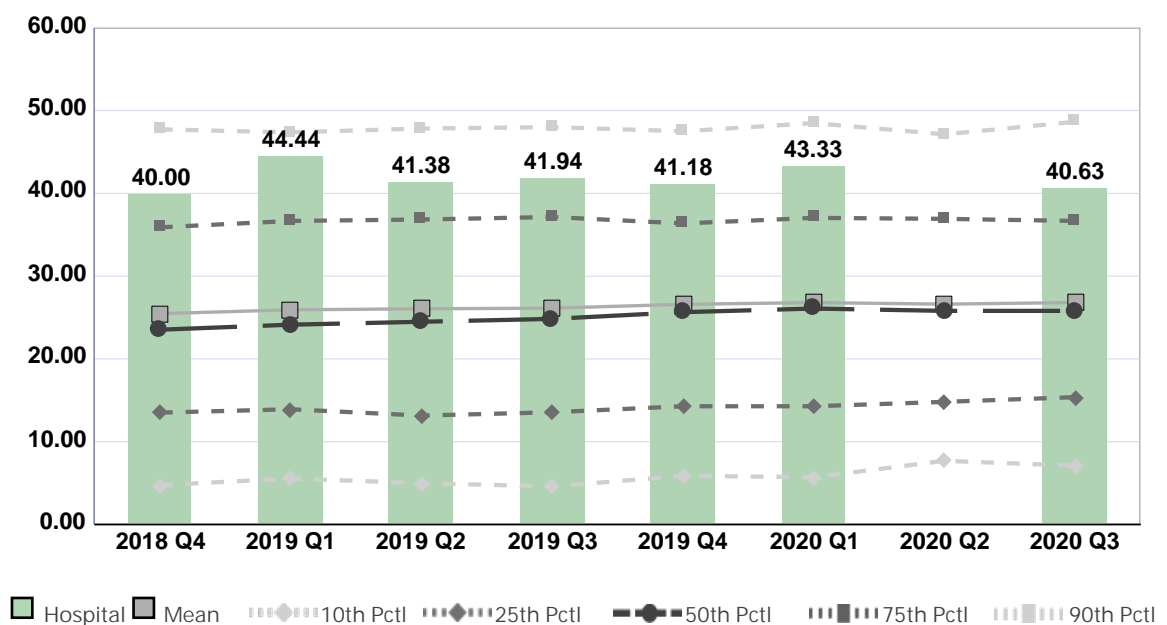
Compared by: All Hospitals

Peer Group: All Hospitals

Unit Type: Adult Critical Care

Unit: Critical Care

Measure: Percent of Direct Care RNs with Specialty Nursing Certification



Quarter	2018 Q4	2019 Q1	2019 Q2	2019 Q3	2019 Q4	2020 Q1	2020 Q2	2020 Q3	Average
Unit	40.00	44.44	41.38	41.94	41.18	43.33	No Data	40.63	41.84
Mean	25.47	25.93	26.05	26.13	26.60	26.80	26.62	26.81	26.30
Standard Deviation	16.57	16.45	16.52	16.85	16.35	16.55	15.75	15.82	16.36
10th Percentile	4.76	5.56	5.00	4.60	5.88	5.71	7.69	7.11	5.79
25th Percentile	13.51	13.92	13.16	13.56	14.29	14.29	14.81	15.38	14.12
50th Percentile (Median)	23.53	24.14	24.49	24.84	25.65	26.09	25.81	25.81	25.04
75th Percentile	35.90	36.67	36.84	37.14	36.36	37.04	36.92	36.67	36.69
90th Percentile	47.73	47.37	47.83	48.00	47.50	48.48	47.13	48.65	47.84
# Units	934	893	879	890	878	766	711	750	838

If the number of units or hospitals is less than five, comparison data are suppressed to maintain confidentiality. If the number of units or hospitals is less than 20, comparison data may vary substantially over the time period and should be used with caution. For additional information, please refer to NDNQI reference documents.



Phelps Memorial Hospital

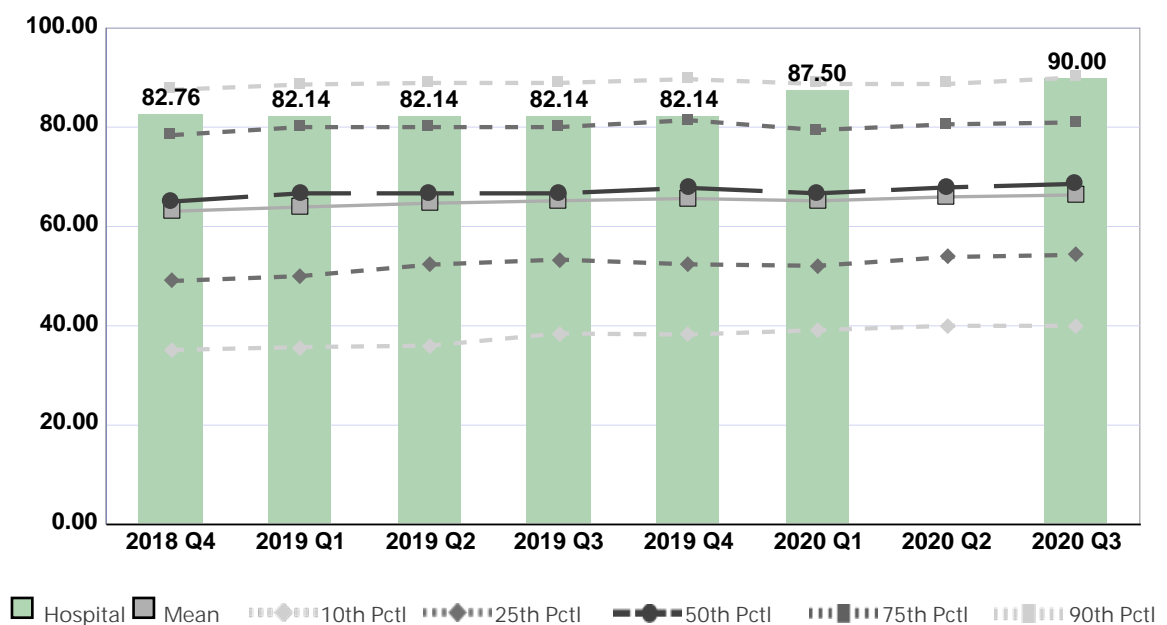
Compared by: All Hospitals

Peer Group: All Hospitals

Unit Type: Adult Step Down

Unit: Intermediate Care (5 South)

Measure: Percent of Direct Care RNs with BSN, MSN, or PhD



Quarter	2018 Q4	2019 Q1	2019 Q2	2019 Q3	2019 Q4	2020 Q1	2020 Q2	2020 Q3	Average
Unit	82.76	82.14	82.14	82.14	82.14	87.50	No Data	90.00	84.12
Mean	63.06	63.90	64.67	65.18	65.63	65.15	65.95	66.35	64.99
Standard Deviation	20.38	20.27	19.71	19.00	19.44	18.72	18.95	19.53	19.50
10th Percentile	35.14	35.71	36.00	38.46	38.24	39.13	40.00	40.00	37.83
25th Percentile	49.02	50.00	52.31	53.33	52.38	52.08	53.85	54.29	52.16
50th Percentile (Median)	65.00	66.67	66.67	66.67	67.77	66.67	67.86	68.57	66.98
75th Percentile	78.38	80.00	80.00	80.00	81.40	79.41	80.56	80.95	80.09
90th Percentile	87.50	88.57	88.89	88.89	89.66	88.68	88.68	90.00	88.86
# Units	647	609	609	630	614	573	537	551	596

If the number of units or hospitals is less than five, comparison data are suppressed to maintain confidentiality. If the number of units or hospitals is less than 20, comparison data may vary substantially over the time period and should be used with caution. For additional information, please refer to NDNQI reference documents.



Phelps Memorial Hospital

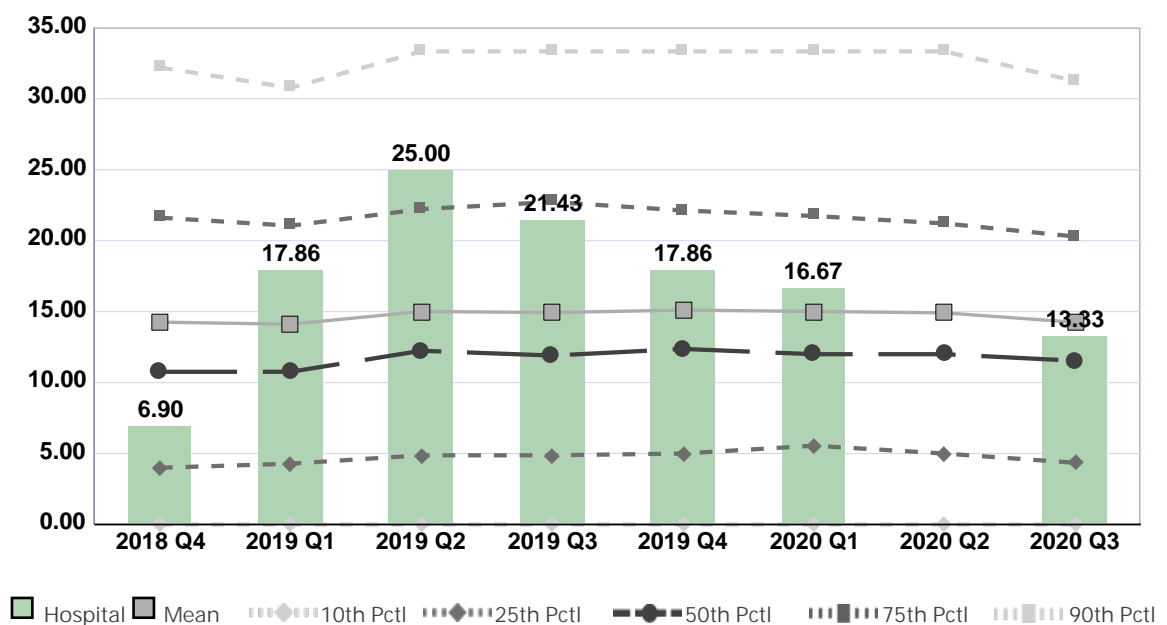
Compared by: All Hospitals

Peer Group: All Hospitals

Unit Type: Adult Step Down

Unit: Intermediate Care (5 South)

Measure: Percent of Direct Care RNs with Specialty Nursing Certification



Quarter	2018 Q4	2019 Q1	2019 Q2	2019 Q3	2019 Q4	2020 Q1	2020 Q2	2020 Q3	Average
Unit	6.90	17.86	25.00	21.43	17.86	16.67	No Data	13.33	17.01
Mean	14.26	14.11	15.01	14.94	15.11	15.01	14.91	14.25	14.70
Standard Deviation	13.14	12.78	13.06	13.04	12.79	12.71	12.80	12.97	12.91
10th Percentile	0.00	0.00	0.00	0.00	0.00	0.00	0.00	0.00	0.00
25th Percentile	4.00	4.29	4.88	4.88	5.00	5.56	5.00	4.35	4.74
50th Percentile (Median)	10.76	10.76	12.24	11.90	12.37	12.00	12.00	11.54	11.70
75th Percentile	21.62	21.05	22.22	22.73	22.13	21.74	21.21	20.29	21.62
90th Percentile	32.20	30.77	33.33	33.33	33.33	33.33	33.33	31.25	32.61
# Units	634	594	587	607	600	559	523	527	579

If the number of units or hospitals is less than five, comparison data are suppressed to maintain confidentiality. If the number of units or hospitals is less than 20, comparison data may vary substantially over the time period and should be used with caution. For additional information, please refer to NDNQI reference documents.

Phelps Memorial Hospital

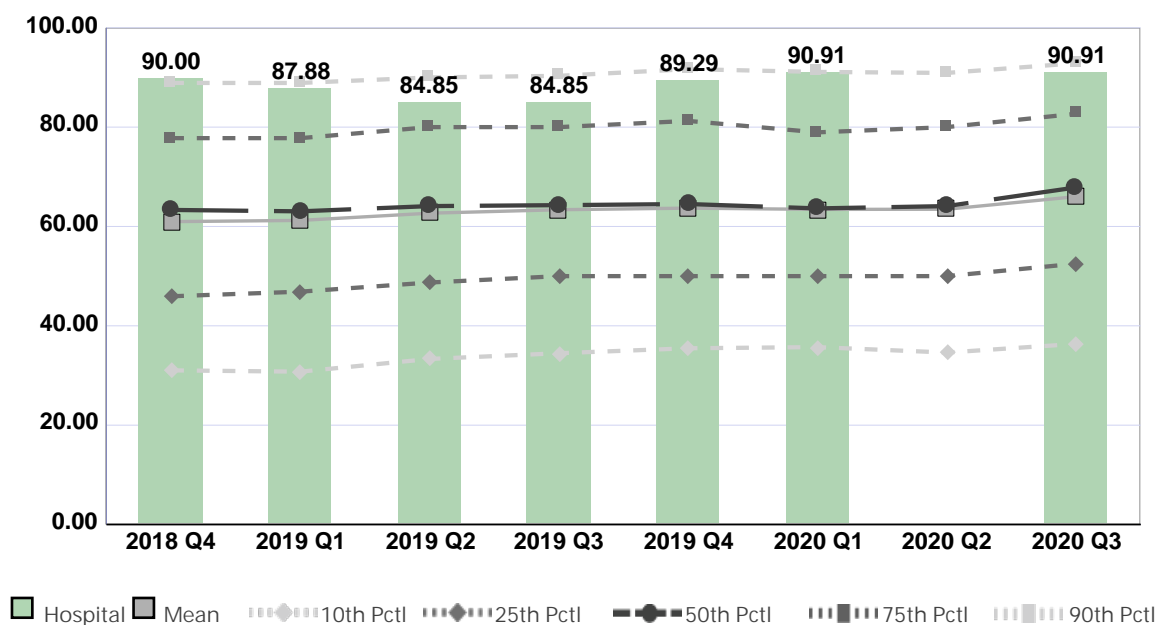
Compared by: All Hospitals

Peer Group: All Hospitals

Unit Type: Adult Medical

Unit: Medicine (5N)

Measure: Percent of Direct Care RNs with BSN, MSN, or PhD



Quarter	2018 Q4	2019 Q1	2019 Q2	2019 Q3	2019 Q4	2020 Q1	2020 Q2	2020 Q3	Average
Unit	90.00	87.88	84.85	84.85	89.29	90.91	No Data	90.91	88.38
Mean	60.98	61.22	62.67	63.37	63.69	63.44	63.47	66.01	63.11
Standard Deviation	22.06	21.96	21.79	21.36	21.77	20.74	20.84	20.69	21.40
10th Percentile	31.03	30.77	33.33	34.48	35.48	35.71	34.62	36.36	33.97
25th Percentile	45.95	46.88	48.72	50.00	50.00	50.00	50.00	52.51	49.26
50th Percentile (Median)	63.33	63.04	64.10	64.29	64.52	63.64	64.10	67.86	64.36
75th Percentile	77.78	77.78	80.00	80.00	81.25	78.95	80.00	82.69	79.81
90th Percentile	88.89	88.89	90.00	90.32	91.67	91.11	90.91	92.86	90.58
# Units	896	845	836	841	843	735	711	776	810

If the number of units or hospitals is less than five, comparison data are suppressed to maintain confidentiality. If the number of units or hospitals is less than 20, comparison data may vary substantially over the time period and should be used with caution. For additional information, please refer to NDNQI reference documents.

Phelps Memorial Hospital

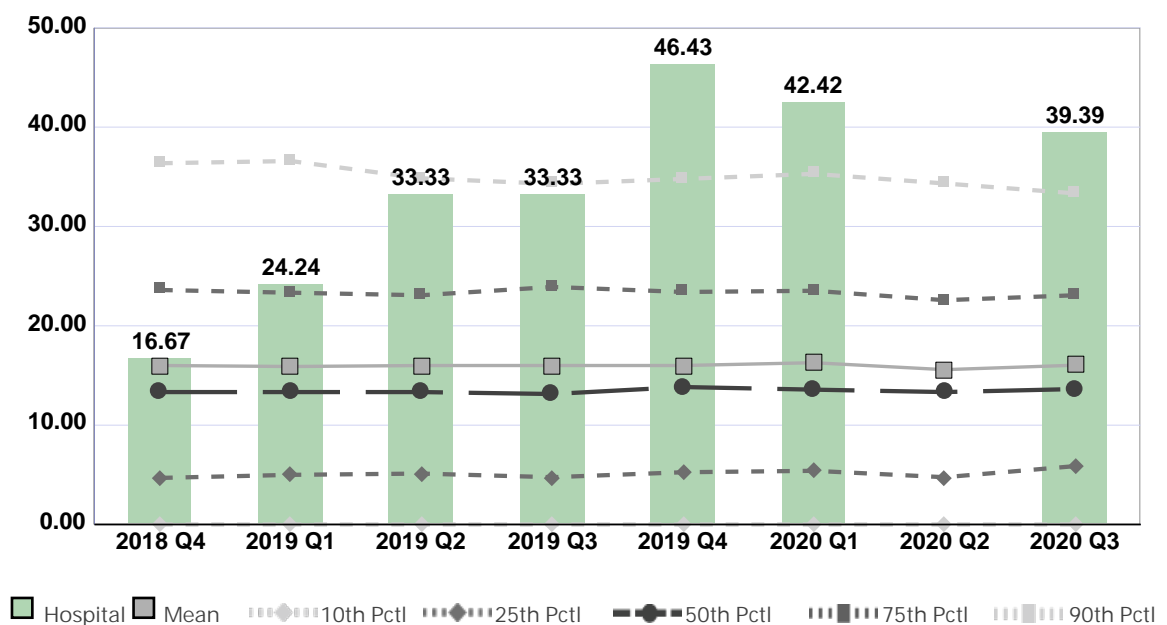
Compared by: All Hospitals

Peer Group: All Hospitals

Unit Type: Adult Medical

Unit: Medicine (5N)

Measure: Percent of Direct Care RNs with Specialty Nursing Certification



Quarter	2018 Q4	2019 Q1	2019 Q2	2019 Q3	2019 Q4	2020 Q1	2020 Q2	2020 Q3	Average
Unit	16.67	24.24	33.33	33.33	46.43	42.42	No Data	39.39	33.69
Mean	16.01	15.90	16.00	16.01	16.01	16.29	15.59	16.04	15.98
Standard Deviation	14.26	13.93	13.59	14.12	13.62	13.72	13.03	13.18	13.68
10th Percentile	0.00	0.00	0.00	0.00	0.00	0.00	0.00	0.00	0.00
25th Percentile	4.69	5.00	5.13	4.76	5.26	5.41	4.76	5.88	5.11
50th Percentile (Median)	13.33	13.33	13.33	13.14	13.84	13.57	13.33	13.64	13.44
75th Percentile	23.61	23.33	23.08	23.91	23.40	23.53	22.58	23.08	23.32
90th Percentile	36.36	36.59	34.85	34.29	34.78	35.29	34.33	33.33	34.98
# Units	872	823	795	806	830	718	678	746	784

If the number of units or hospitals is less than five, comparison data are suppressed to maintain confidentiality. If the number of units or hospitals is less than 20, comparison data may vary substantially over the time period and should be used with caution. For additional information, please refer to NDNQI reference documents.

Phelps Memorial Hospital

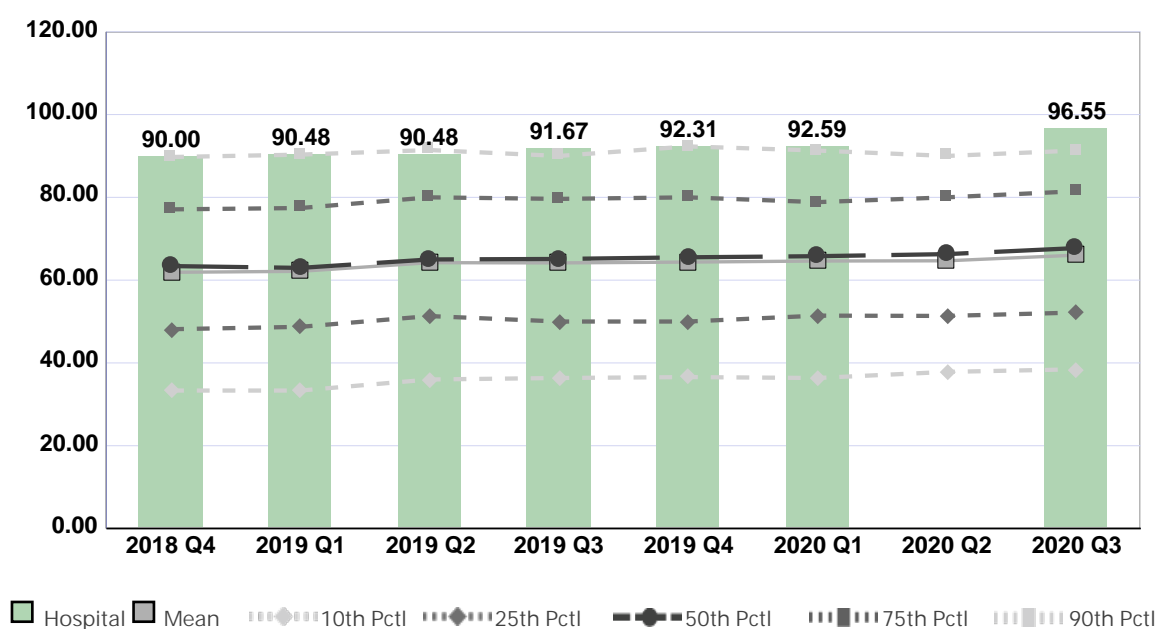
Compared by: All Hospitals

Peer Group: All Hospitals

Unit Type: Adult Surgical

Unit: Ortho (2C)

Measure: Percent of Direct Care RNs with BSN, MSN, or PhD



Quarter	2018 Q4	2019 Q1	2019 Q2	2019 Q3	2019 Q4	2020 Q1	2020 Q2	2020 Q3	Average
Unit	90.00	90.48	90.48	91.67	92.31	92.59	No Data	96.55	92.01
Mean	61.90	62.13	64.22	64.16	64.36	64.62	64.68	66.04	64.01
Standard Deviation	21.63	21.78	21.35	21.01	21.45	20.45	20.20	20.33	21.02
10th Percentile	33.33	33.33	36.00	36.36	36.59	36.36	37.84	38.46	36.03
25th Percentile	48.15	48.72	51.32	50.00	50.00	51.43	51.36	52.17	50.39
50th Percentile (Median)	63.40	62.96	65.00	65.12	65.52	65.78	66.29	67.74	65.23
75th Percentile	77.10	77.42	80.00	79.63	80.00	78.85	80.00	81.48	79.31
90th Percentile	89.74	90.32	91.43	90.00	92.31	91.30	90.00	91.30	90.80
# Units	592	563	568	561	549	486	472	489	535

If the number of units or hospitals is less than five, comparison data are suppressed to maintain confidentiality. If the number of units or hospitals is less than 20, comparison data may vary substantially over the time period and should be used with caution. For additional information, please refer to NDNQI reference documents.



Phelps Memorial Hospital

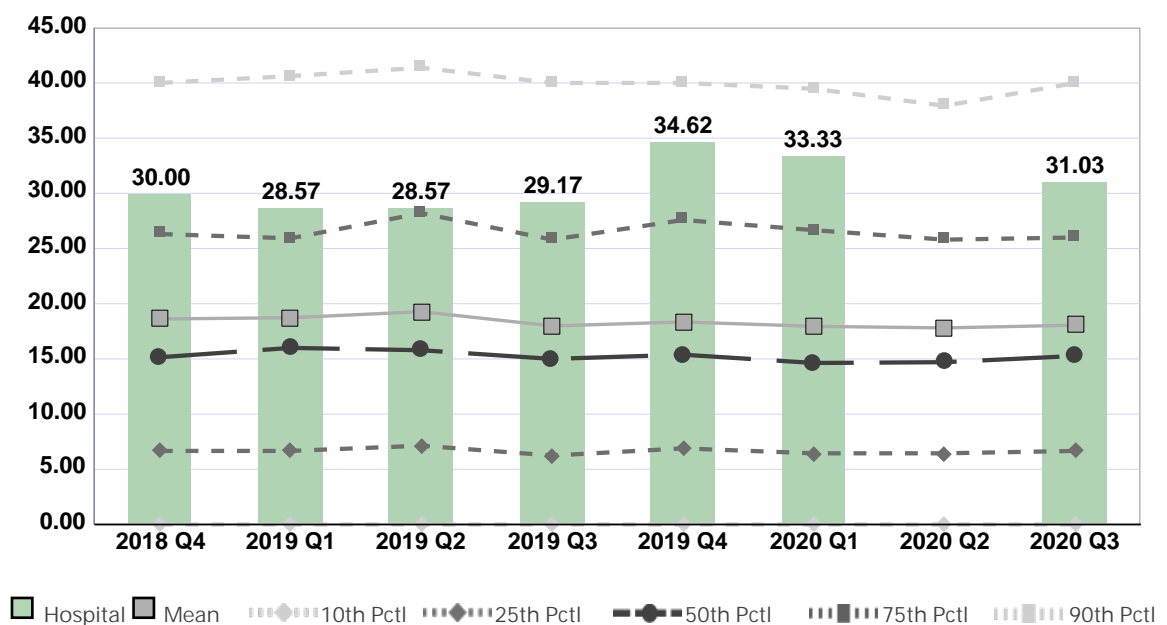
Compared by: All Hospitals

Peer Group: All Hospitals

Unit Type: Adult Surgical

Unit: Ortho (2C)

Measure: Percent of Direct Care RNs with Specialty Nursing Certification



Quarter	2018 Q4	2019 Q1	2019 Q2	2019 Q3	2019 Q4	2020 Q1	2020 Q2	2020 Q3	Average
Unit	30.00	28.57	28.57	29.17	34.62	33.33	No Data	31.03	30.76
Mean	18.62	18.73	19.28	17.99	18.35	17.96	17.81	18.06	18.35
Standard Deviation	15.79	15.72	16.59	15.29	14.90	14.72	14.55	15.12	15.33
10th Percentile	0.00	0.00	0.00	0.00	0.00	0.00	0.00	0.00	0.00
25th Percentile	6.67	6.67	7.14	6.25	6.90	6.45	6.45	6.67	6.65
50th Percentile (Median)	15.15	16.00	15.79	15.00	15.38	14.63	14.71	15.27	15.24
75th Percentile	26.32	25.93	28.21	25.81	27.59	26.67	25.81	26.00	26.54
90th Percentile	40.00	40.63	41.38	40.00	40.00	39.47	37.93	40.00	39.93
# Units	579	549	545	539	537	473	453	466	518

If the number of units or hospitals is less than five, comparison data are suppressed to maintain confidentiality. If the number of units or hospitals is less than 20, comparison data may vary substantially over the time period and should be used with caution. For additional information, please refer to NDNQI reference documents.



Phelps Memorial Hospital

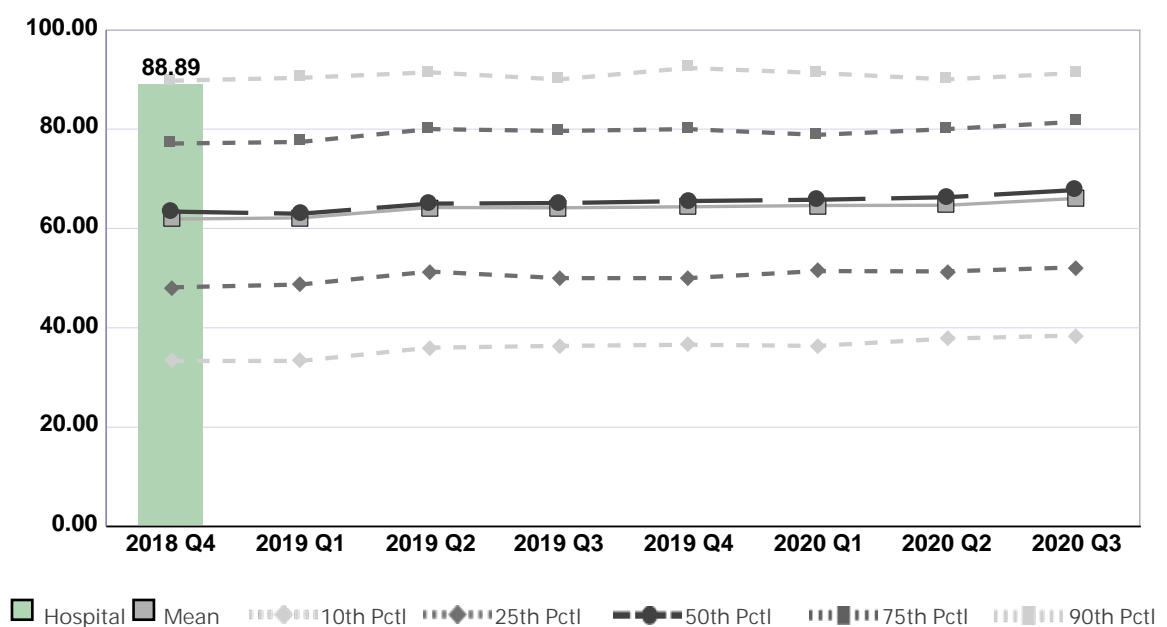
Compared by: All Hospitals

Peer Group: All Hospitals

Unit Type: Adult Surgical

Unit: Surgery (2N) (through qtr 4 2018)

Measure: Percent of Direct Care RNs with BSN, MSN, or PhD



Quarter	2018 Q4	2019 Q1	2019 Q2	2019 Q3	2019 Q4	2020 Q1	2020 Q2	2020 Q3	Average
Unit	88.89	No Data	No Data	No Data	No Data	No Data	No Data	No Data	88.89
Mean	61.90	62.13	64.22	64.16	64.36	64.62	64.68	66.04	64.01
Standard Deviation	21.63	21.78	21.35	21.01	21.45	20.45	20.20	20.33	21.02
10th Percentile	33.33	33.33	36.00	36.36	36.59	36.36	37.84	38.46	36.03
25th Percentile	48.15	48.72	51.32	50.00	50.00	51.43	51.36	52.17	50.39
50th Percentile (Median)	63.40	62.96	65.00	65.12	65.52	65.78	66.29	67.74	65.23
75th Percentile	77.10	77.42	80.00	79.63	80.00	78.85	80.00	81.48	79.31
90th Percentile	89.74	90.32	91.43	90.00	92.31	91.30	90.00	91.30	90.80
# Units	592	563	568	561	549	486	472	489	535

If the number of units or hospitals is less than five, comparison data are suppressed to maintain confidentiality. If the number of units or hospitals is less than 20, comparison data may vary substantially over the time period and should be used with caution. For additional information, please refer to NDNQI reference documents.

Phelps Memorial Hospital

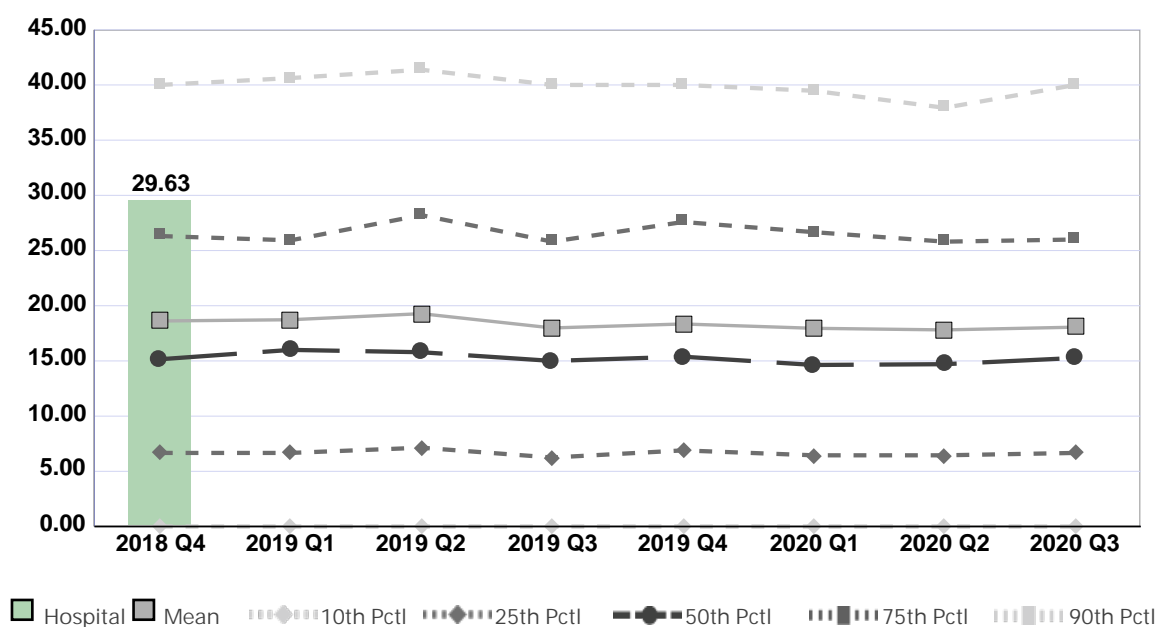
Compared by: All Hospitals

Peer Group: All Hospitals

Unit Type: Adult Surgical

Unit: Surgery (2N) (through qtr 4 2018)

Measure: Percent of Direct Care RNs with Specialty Nursing Certification



Quarter	2018 Q4	2019 Q1	2019 Q2	2019 Q3	2019 Q4	2020 Q1	2020 Q2	2020 Q3	Average
Unit	29.63	No Data	No Data	No Data	No Data	No Data	No Data	No Data	29.63
Mean	18.62	18.73	19.28	17.99	18.35	17.96	17.81	18.06	18.35
Standard Deviation	15.79	15.72	16.59	15.29	14.90	14.72	14.55	15.12	15.33
10th Percentile	0.00	0.00	0.00	0.00	0.00	0.00	0.00	0.00	0.00
25th Percentile	6.67	6.67	7.14	6.25	6.90	6.45	6.45	6.67	6.65
50th Percentile (Median)	15.15	16.00	15.79	15.00	15.38	14.63	14.71	15.27	15.24
75th Percentile	26.32	25.93	28.21	25.81	27.59	26.67	25.81	26.00	26.54
90th Percentile	40.00	40.63	41.38	40.00	40.00	39.47	37.93	40.00	39.93
# Units	579	549	545	539	537	473	453	466	518

If the number of units or hospitals is less than five, comparison data are suppressed to maintain confidentiality. If the number of units or hospitals is less than 20, comparison data may vary substantially over the time period and should be used with caution. For additional information, please refer to NDNQI reference documents.

Phelps Memorial Hospital

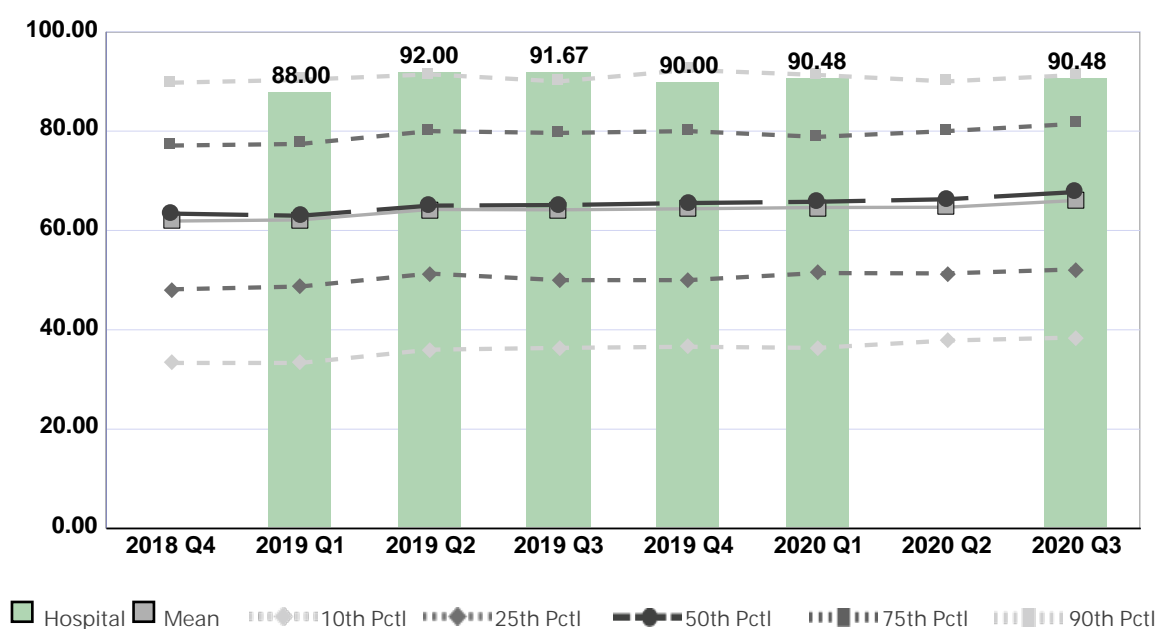
Compared by: All Hospitals

Peer Group: All Hospitals

Unit Type: Adult Surgical

Unit: Surgery -3 North

Measure: Percent of Direct Care RNs with BSN, MSN, or PhD



Quarter	2018 Q4	2019 Q1	2019 Q2	2019 Q3	2019 Q4	2020 Q1	2020 Q2	2020 Q3	Average
Unit	No Data	88.00	92.00	91.67	90.00	90.48	No Data	90.48	90.44
Mean	61.90	62.13	64.22	64.16	64.36	64.62	64.68	66.04	64.01
Standard Deviation	21.63	21.78	21.35	21.01	21.45	20.45	20.20	20.33	21.02
10th Percentile	33.33	33.33	36.00	36.36	36.59	36.36	37.84	38.46	36.03
25th Percentile	48.15	48.72	51.32	50.00	50.00	51.43	51.36	52.17	50.39
50th Percentile (Median)	63.40	62.96	65.00	65.12	65.52	65.78	66.29	67.74	65.23
75th Percentile	77.10	77.42	80.00	79.63	80.00	78.85	80.00	81.48	79.31
90th Percentile	89.74	90.32	91.43	90.00	92.31	91.30	90.00	91.30	90.80
# Units	592	563	568	561	549	486	472	489	535

If the number of units or hospitals is less than five, comparison data are suppressed to maintain confidentiality. If the number of units or hospitals is less than 20, comparison data may vary substantially over the time period and should be used with caution. For additional information, please refer to NDNQI reference documents.

Phelps Memorial Hospital

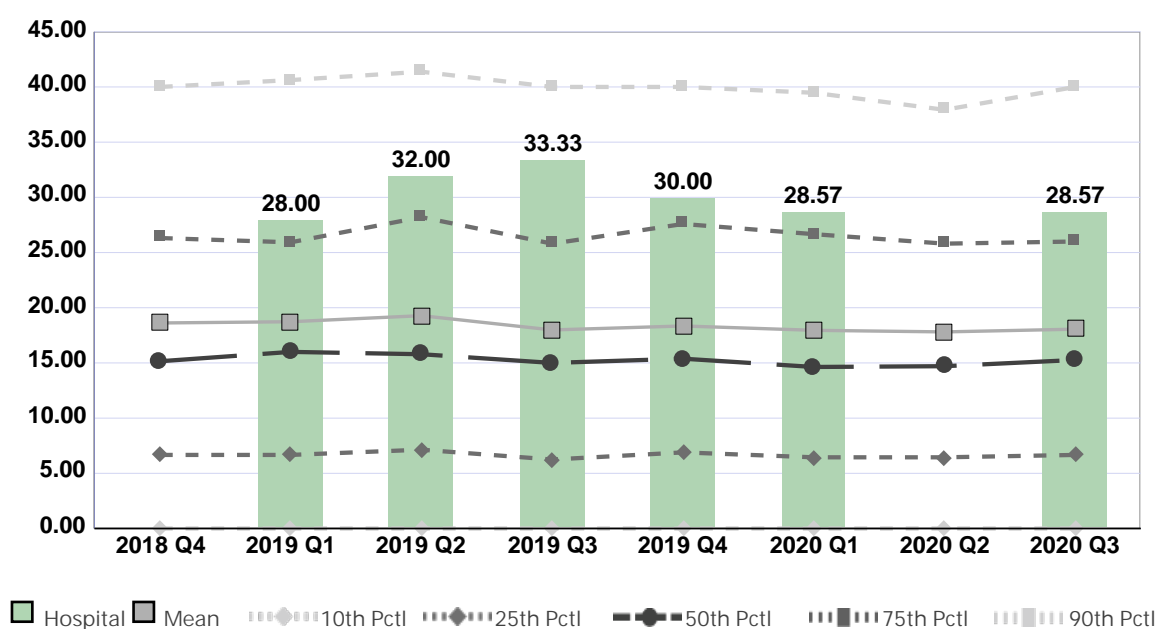
Compared by: All Hospitals

Peer Group: All Hospitals

Unit Type: Adult Surgical

Unit: Surgery -3 North

Measure: Percent of Direct Care RNs with Specialty Nursing Certification



Quarter	2018 Q4	2019 Q1	2019 Q2	2019 Q3	2019 Q4	2020 Q1	2020 Q2	2020 Q3	Average
Unit	No Data	28.00	32.00	33.33	30.00	28.57	No Data	28.57	30.08
Mean	18.62	18.73	19.28	17.99	18.35	17.96	17.81	18.06	18.35
Standard Deviation	15.79	15.72	16.59	15.29	14.90	14.72	14.55	15.12	15.33
10th Percentile	0.00	0.00	0.00	0.00	0.00	0.00	0.00	0.00	0.00
25th Percentile	6.67	6.67	7.14	6.25	6.90	6.45	6.45	6.67	6.65
50th Percentile (Median)	15.15	16.00	15.79	15.00	15.38	14.63	14.71	15.27	15.24
75th Percentile	26.32	25.93	28.21	25.81	27.59	26.67	25.81	26.00	26.54
90th Percentile	40.00	40.63	41.38	40.00	40.00	39.47	37.93	40.00	39.93
# Units	579	549	545	539	537	473	453	466	518

If the number of units or hospitals is less than five, comparison data are suppressed to maintain confidentiality. If the number of units or hospitals is less than 20, comparison data may vary substantially over the time period and should be used with caution. For additional information, please refer to NDNQI reference documents.

Phelps Memorial Hospital

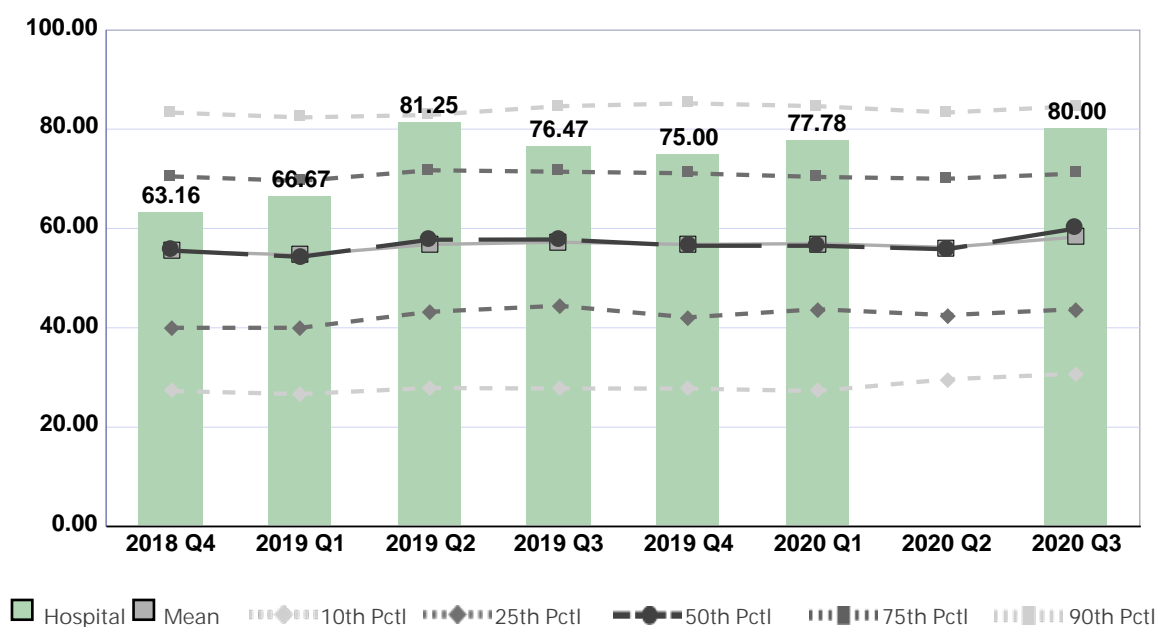
Compared by: All Hospitals

Peer Group: All Hospitals

Unit Type: Adult Psychiatric

Unit: 1S

Measure: Percent of Direct Care RNs with BSN, MSN, or PhD



Quarter	2018 Q4	2019 Q1	2019 Q2	2019 Q3	2019 Q4	2020 Q1	2020 Q2	2020 Q3	Average
Unit	63.16	66.67	81.25	76.47	75.00	77.78	No Data	80.00	74.33
Mean	55.46	54.65	56.78	57.24	56.79	56.95	56.20	58.27	56.54
Standard Deviation	21.17	20.76	20.65	20.42	20.47	19.86	20.14	20.07	20.44
10th Percentile	27.27	26.67	27.89	27.78	27.78	27.27	29.63	30.77	28.13
25th Percentile	40.00	40.00	43.22	44.44	42.11	43.75	42.55	43.75	42.48
50th Percentile (Median)	55.56	54.29	57.74	57.78	56.52	56.52	55.81	60.00	56.78
75th Percentile	70.48	69.57	71.71	71.43	71.11	70.37	70.00	71.05	70.72
90th Percentile	83.33	82.35	82.84	84.62	85.19	84.62	83.33	84.62	83.86
# Units	288	275	260	263	273	229	217	230	254

If the number of units or hospitals is less than five, comparison data are suppressed to maintain confidentiality. If the number of units or hospitals is less than 20, comparison data may vary substantially over the time period and should be used with caution. For additional information, please refer to NDNQI reference documents.

Phelps Memorial Hospital

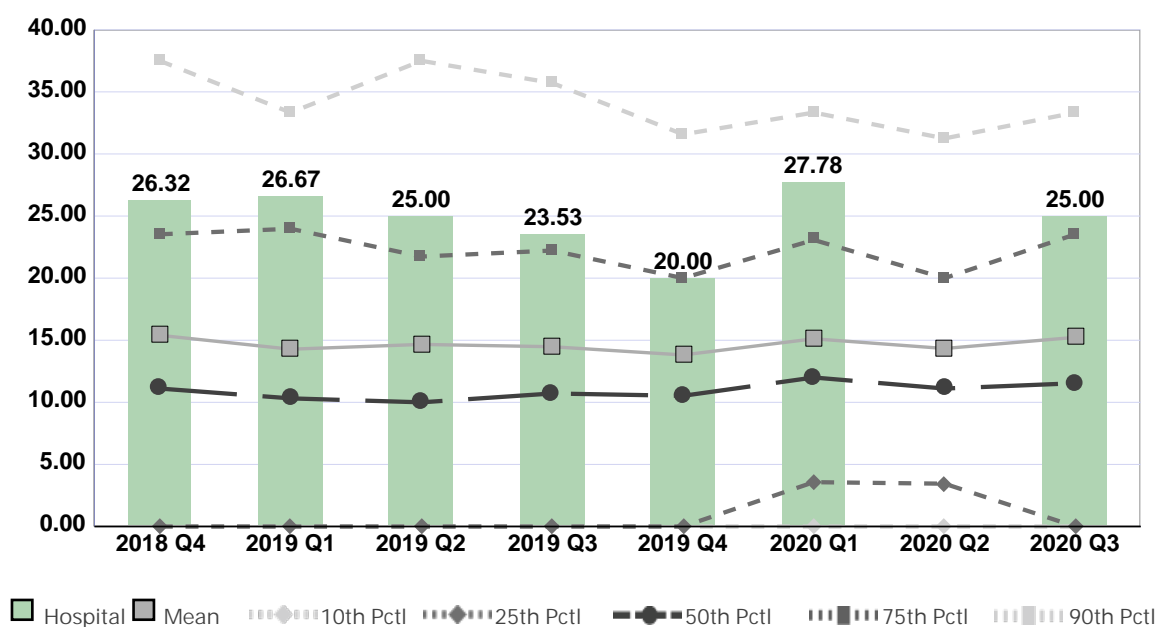
Compared by: All Hospitals

Peer Group: All Hospitals

Unit Type: Adult Psychiatric

Unit: 1S

Measure: Percent of Direct Care RNs with Specialty Nursing Certification



Quarter	2018 Q4	2019 Q1	2019 Q2	2019 Q3	2019 Q4	2020 Q1	2020 Q2	2020 Q3	Average
Unit	26.32	26.67	25.00	23.53	20.00	27.78	No Data	25.00	24.90
Mean	15.40	14.28	14.66	14.48	13.81	15.12	14.34	15.23	14.66
Standard Deviation	16.39	15.32	15.97	14.70	14.72	15.00	14.02	15.51	15.20
10th Percentile	0.00	0.00	0.00	0.00	0.00	0.00	0.00	0.00	0.00
25th Percentile	0.00	0.00	0.00	0.00	0.00	3.57	3.45	0.00	0.88
50th Percentile (Median)	11.11	10.32	10.00	10.71	10.53	12.00	11.11	11.54	10.92
75th Percentile	23.53	23.98	21.74	22.22	20.00	23.08	20.00	23.53	22.26
90th Percentile	37.50	33.33	37.50	35.71	31.58	33.33	31.25	33.33	34.19
# Units	279	264	239	247	262	214	201	214	240

If the number of units or hospitals is less than five, comparison data are suppressed to maintain confidentiality. If the number of units or hospitals is less than 20, comparison data may vary substantially over the time period and should be used with caution. For additional information, please refer to NDNQI reference documents.

Phelps Memorial Hospital

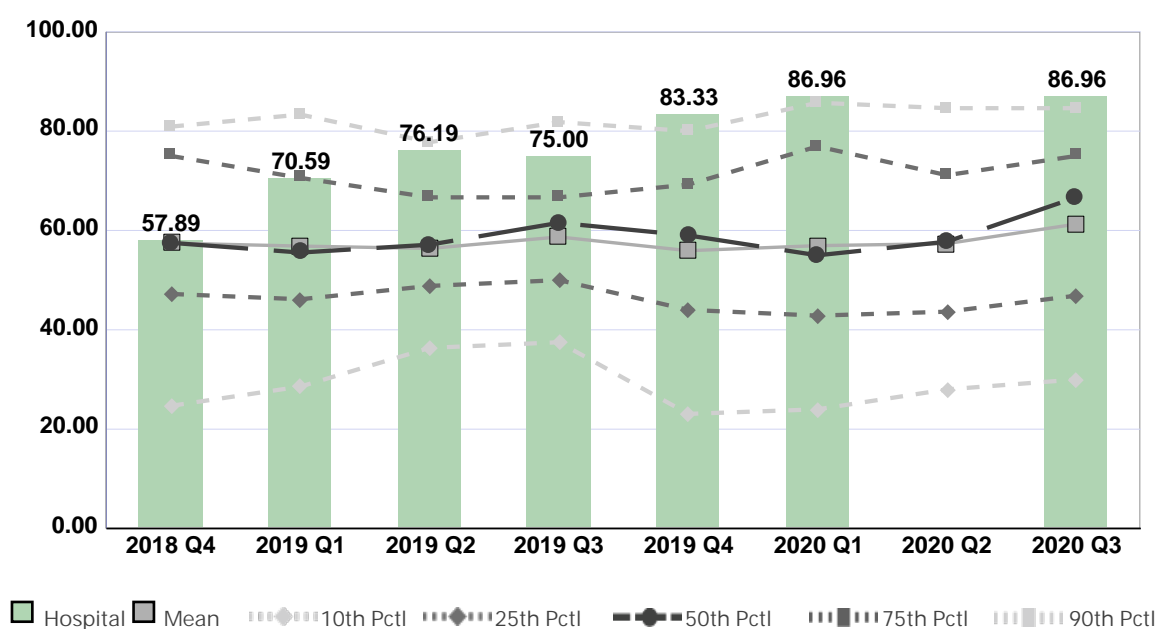
Compared by: All Hospitals

Peer Group: All Hospitals

Unit Type: Behavioral Health

Unit: Behavioral Health

Measure: Percent of Direct Care RNs with BSN, MSN, or PhD



Quarter	2018 Q4	2019 Q1	2019 Q2	2019 Q3	2019 Q4	2020 Q1	2020 Q2	2020 Q3	Average
Unit	57.89	70.59	76.19	75.00	83.33	86.96	No Data	86.96	76.70
Mean	57.45	56.85	56.38	58.70	55.93	56.94	57.35	61.28	57.61
Standard Deviation	20.21	19.89	17.34	18.67	20.49	23.18	20.46	20.79	20.13
10th Percentile	24.70	28.57	36.36	37.50	23.08	24.00	28.00	30.00	29.03
25th Percentile	47.22	46.15	48.84	50.00	44.02	42.86	43.65	46.88	46.20
50th Percentile (Median)	57.52	55.56	57.14	61.54	59.01	55.00	57.74	66.67	58.77
75th Percentile	75.00	70.59	66.67	66.67	69.23	76.92	71.13	75.00	71.40
90th Percentile	80.91	83.33	77.78	81.82	80.00	85.71	84.62	84.62	82.35
# Units	40	35	33	37	36	31	28	34	34

If the number of units or hospitals is less than five, comparison data are suppressed to maintain confidentiality. If the number of units or hospitals is less than 20, comparison data may vary substantially over the time period and should be used with caution. For additional information, please refer to NDNQI reference documents.

Phelps Memorial Hospital

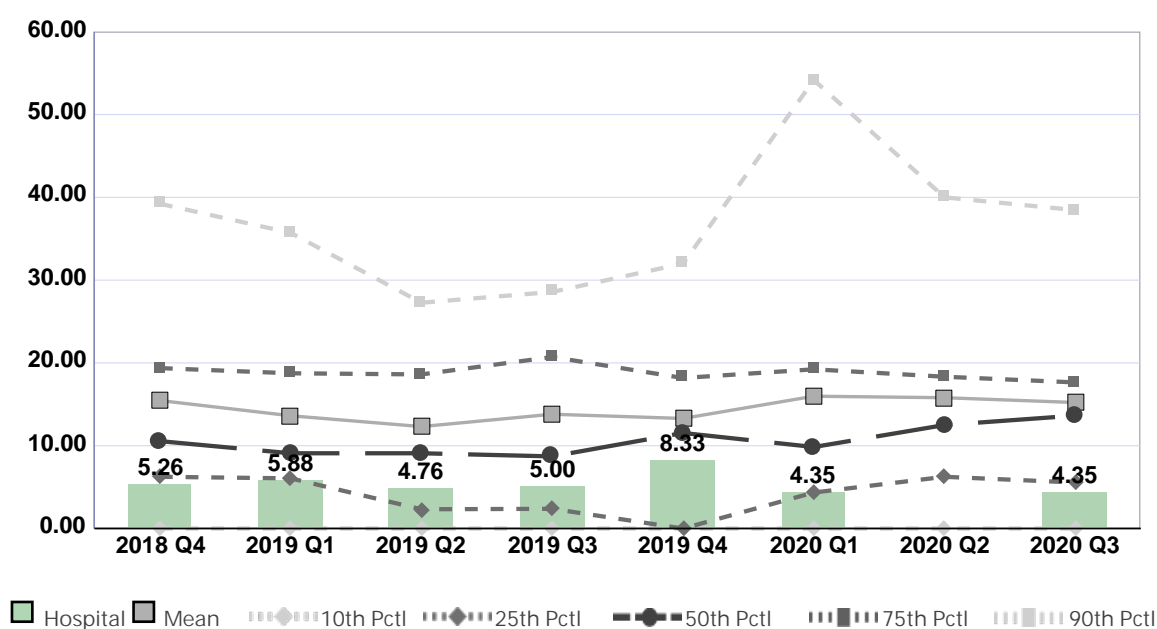
Compared by: All Hospitals

Peer Group: All Hospitals

Unit Type: Behavioral Health

Unit: Behavioral Health

Measure: Percent of Direct Care RNs with Specialty Nursing Certification



Quarter	2018 Q4	2019 Q1	2019 Q2	2019 Q3	2019 Q4	2020 Q1	2020 Q2	2020 Q3	Average
Unit	5.26	5.88	4.76	5.00	8.33	4.35	No Data	4.35	5.42
Mean	15.46	13.62	12.31	13.81	13.29	15.98	15.80	15.22	14.44
Standard Deviation	14.36	11.93	11.35	14.21	12.95	18.86	16.96	14.67	14.41
10th Percentile	0.00	0.00	0.00	0.00	0.00	0.00	0.00	0.00	0.00
25th Percentile	6.25	6.06	2.33	2.38	0.00	4.35	6.25	5.56	4.15
50th Percentile (Median)	10.56	9.09	9.09	8.71	11.54	9.85	12.50	13.64	10.62
75th Percentile	19.38	18.75	18.61	20.71	18.18	19.23	18.33	17.65	18.86
90th Percentile	39.23	35.71	27.27	28.57	32.00	54.17	40.00	38.46	36.93
# Units	40	35	32	36	35	30	28	34	34

If the number of units or hospitals is less than five, comparison data are suppressed to maintain confidentiality. If the number of units or hospitals is less than 20, comparison data may vary substantially over the time period and should be used with caution. For additional information, please refer to NDNQI reference documents.

Phelps Memorial Hospital

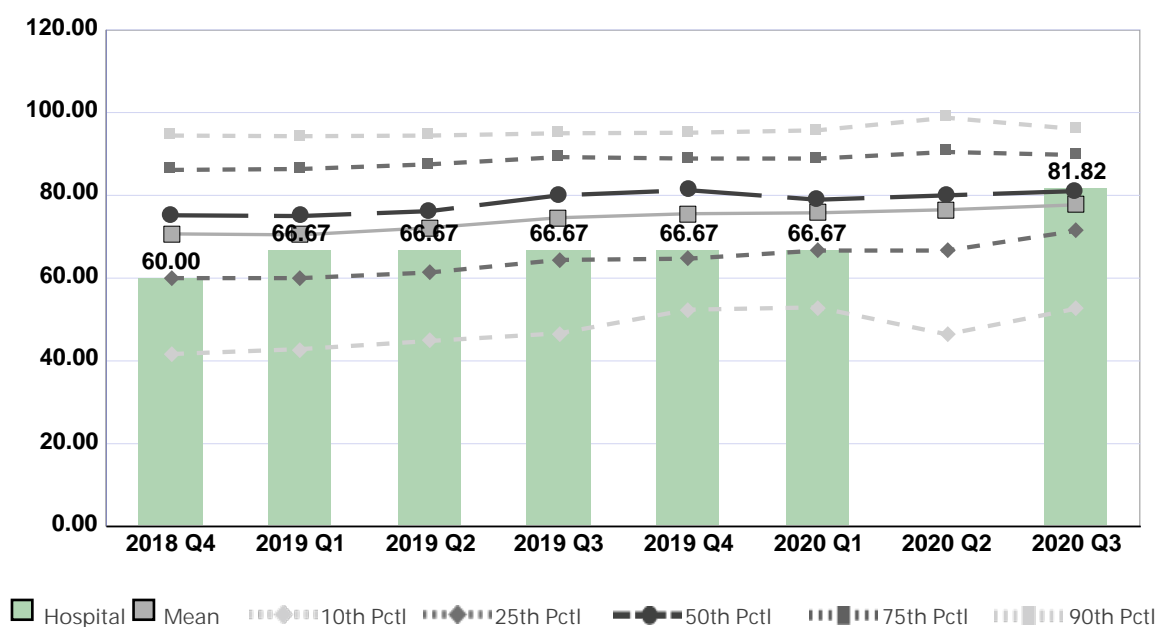
Compared by: All Hospitals

Peer Group: All Hospitals

Unit Type: Pediatric Med-Surg Combined

Unit: Peds

Measure: Percent of Direct Care RNs with BSN, MSN, or PhD



Quarter	2018 Q4	2019 Q1	2019 Q2	2019 Q3	2019 Q4	2020 Q1	2020 Q2	2020 Q3	Average
Unit	60.00	66.67	66.67	66.67	66.67	66.67	No Data	81.82	67.88
Mean	70.69	70.45	72.17	74.59	75.56	75.78	76.52	77.71	74.18
Standard Deviation	21.58	21.74	20.52	19.52	18.42	18.14	19.02	17.52	19.56
10th Percentile	41.67	42.86	44.83	46.67	52.38	52.94	46.43	52.63	47.55
25th Percentile	60.00	60.00	61.36	64.40	64.71	66.67	66.67	71.43	64.40
50th Percentile (Median)	75.18	75.00	76.19	80.00	81.25	78.95	80.00	81.03	78.45
75th Percentile	86.14	86.36	87.50	89.24	88.89	88.89	90.48	89.74	88.40
90th Percentile	94.44	94.29	94.44	95.00	95.12	95.71	98.75	96.00	95.47
# Units	204	197	193	184	191	171	159	171	184

If the number of units or hospitals is less than five, comparison data are suppressed to maintain confidentiality. If the number of units or hospitals is less than 20, comparison data may vary substantially over the time period and should be used with caution. For additional information, please refer to NDNQI reference documents.

Phelps Memorial Hospital

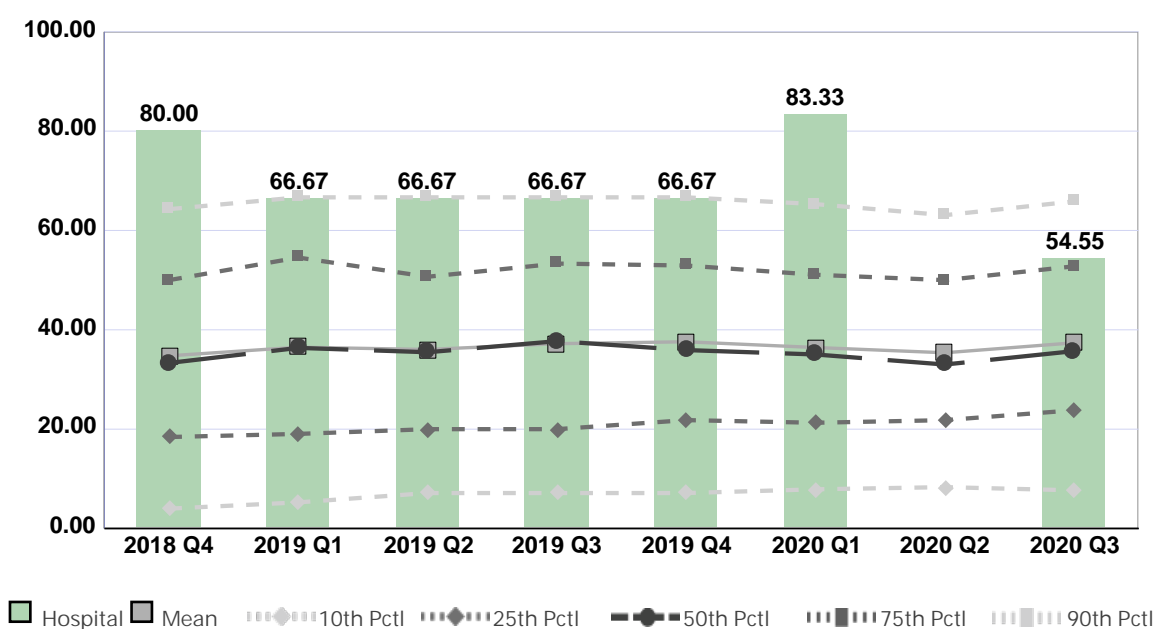
Compared by: All Hospitals

Peer Group: All Hospitals

Unit Type: Pediatric Med-Surg Combined

Unit: Peds

Measure: Percent of Direct Care RNs with Specialty Nursing Certification



Quarter	2018 Q4	2019 Q1	2019 Q2	2019 Q3	2019 Q4	2020 Q1	2020 Q2	2020 Q3	Average
Unit	80.00	66.67	66.67	66.67	66.67	83.33	No Data	54.55	69.22
Mean	34.77	36.50	36.04	37.21	37.60	36.44	35.38	37.39	36.42
Standard Deviation	22.09	22.57	22.15	22.09	22.21	21.26	20.33	20.97	21.71
10th Percentile	4.00	5.26	7.14	7.14	7.14	7.89	8.33	7.69	6.83
25th Percentile	18.42	19.05	20.00	20.00	21.83	21.29	21.82	23.81	20.78
50th Percentile (Median)	33.33	36.36	35.49	37.72	35.92	35.04	33.01	35.71	35.32
75th Percentile	50.00	54.55	50.68	53.33	52.94	51.09	50.00	52.79	51.92
90th Percentile	64.29	66.67	66.67	66.67	66.67	65.31	63.08	65.85	65.65
# Units	202	193	186	180	188	168	156	168	180

If the number of units or hospitals is less than five, comparison data are suppressed to maintain confidentiality. If the number of units or hospitals is less than 20, comparison data may vary substantially over the time period and should be used with caution. For additional information, please refer to NDNQI reference documents.

Phelps Memorial Hospital

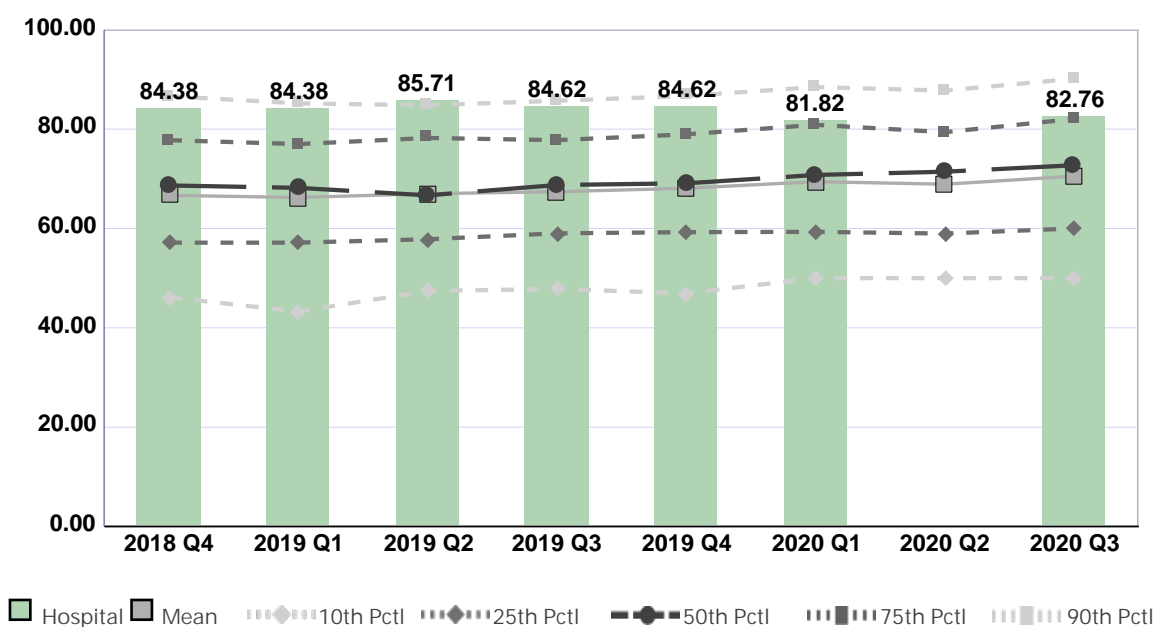
Compared by: All Hospitals

Peer Group: All Hospitals

Unit Type: Mother/Baby

Unit: Well Baby and Postpartum

Measure: Percent of Direct Care RNs with BSN, MSN, or PhD



Quarter	2018 Q4	2019 Q1	2019 Q2	2019 Q3	2019 Q4	2020 Q1	2020 Q2	2020 Q3	Average
Unit	84.38	84.38	85.71	84.62	84.62	81.82	No Data	82.76	84.04
Mean	66.67	66.24	66.99	67.41	68.10	69.42	68.91	70.52	68.03
Standard Deviation	16.22	16.08	15.56	15.41	15.33	16.10	15.51	15.93	15.77
10th Percentile	46.14	43.28	47.41	47.83	46.94	50.00	50.00	50.00	47.70
25th Percentile	57.14	57.14	57.84	59.02	59.26	59.32	58.97	60.00	58.59
50th Percentile (Median)	68.66	68.18	66.67	68.75	69.09	70.77	71.43	72.73	69.53
75th Percentile	77.78	76.99	78.22	77.78	78.95	80.87	79.38	82.05	79.00
90th Percentile	86.63	85.19	84.81	85.71	86.67	88.46	87.76	90.14	86.92
# Units	240	236	220	233	237	203	191	213	222

If the number of units or hospitals is less than five, comparison data are suppressed to maintain confidentiality. If the number of units or hospitals is less than 20, comparison data may vary substantially over the time period and should be used with caution. For additional information, please refer to NDNQI reference documents.

Phelps Memorial Hospital

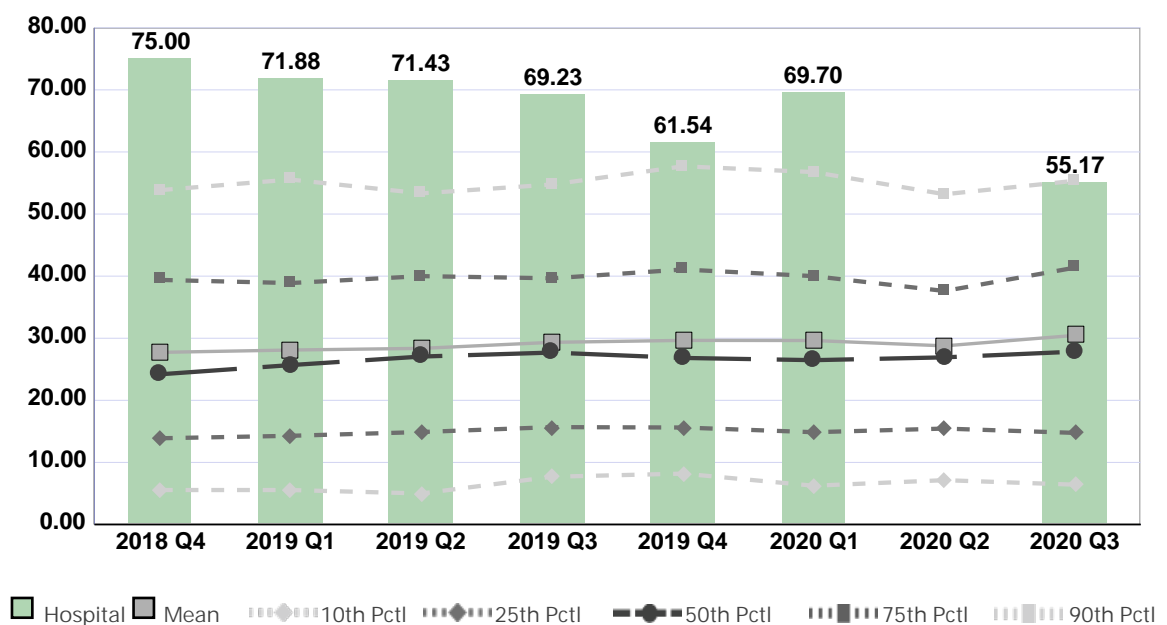
Compared by: All Hospitals

Peer Group: All Hospitals

Unit Type: Mother/Baby

Unit: Well Baby and Postpartum

Measure: Percent of Direct Care RNs with Specialty Nursing Certification



Quarter	2018 Q4	2019 Q1	2019 Q2	2019 Q3	2019 Q4	2020 Q1	2020 Q2	2020 Q3	Average
Unit	75.00	71.88	71.43	69.23	61.54	69.70	No Data	55.17	67.71
Mean	27.72	28.10	28.37	29.34	29.65	29.63	28.77	30.47	29.01
Standard Deviation	18.54	18.48	18.36	18.74	19.17	19.61	18.01	19.58	18.81
10th Percentile	5.56	5.56	5.00	7.69	8.20	6.25	7.14	6.42	6.48
25th Percentile	13.89	14.29	14.89	15.69	15.63	14.86	15.45	14.75	14.93
50th Percentile (Median)	24.19	25.68	27.05	27.69	26.83	26.47	26.92	27.84	26.58
75th Percentile	39.39	38.89	40.00	39.66	41.07	40.00	37.61	41.38	39.75
90th Percentile	53.85	55.56	53.33	54.76	57.69	56.76	53.19	55.36	55.06
# Units	238	234	218	231	235	197	188	210	219

If the number of units or hospitals is less than five, comparison data are suppressed to maintain confidentiality. If the number of units or hospitals is less than 20, comparison data may vary substantially over the time period and should be used with caution. For additional information, please refer to NDNQI reference documents.

Phelps Memorial Hospital

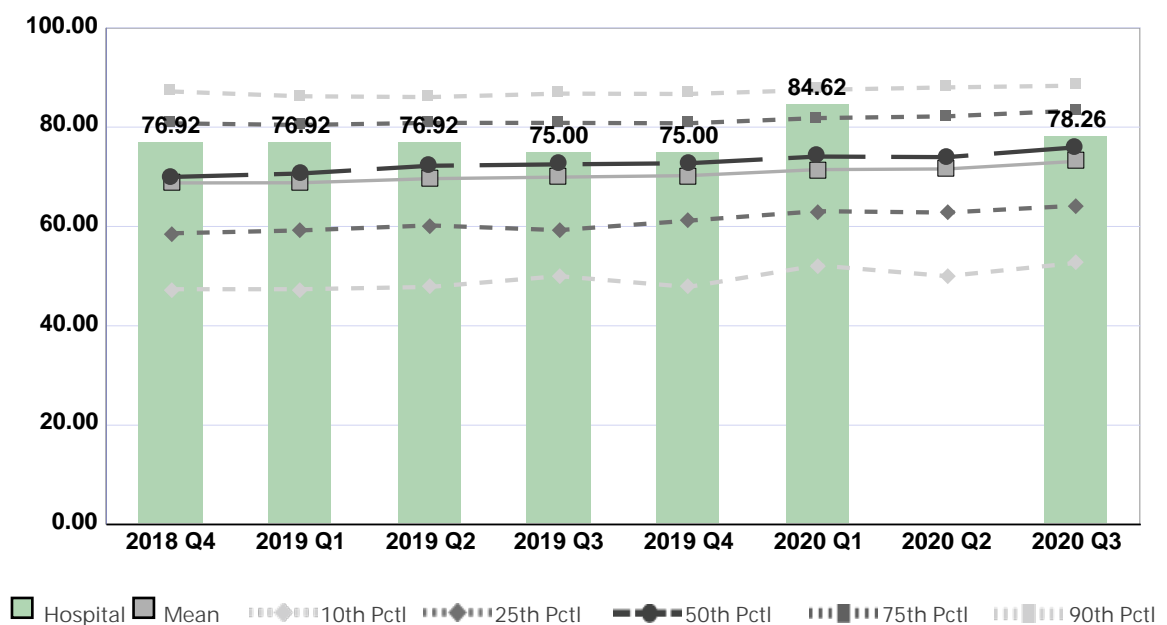
Compared by: All Hospitals

Peer Group: All Hospitals

Unit Type: Labor and Delivery

Unit: Labor and Delivery

Measure: Percent of Direct Care RNs with BSN, MSN, or PhD



Quarter	2018 Q4	2019 Q1	2019 Q2	2019 Q3	2019 Q4	2020 Q1	2020 Q2	2020 Q3	Average
Unit	76.92	76.92	76.92	75.00	75.00	84.62	No Data	78.26	77.66
Mean	68.76	68.80	69.62	69.93	70.23	71.45	71.58	73.11	70.44
Standard Deviation	15.29	15.70	15.21	14.79	15.44	14.89	14.81	14.18	15.04
10th Percentile	47.37	47.37	47.83	50.00	47.83	52.17	50.00	52.66	49.40
25th Percentile	58.62	59.21	60.22	59.26	61.17	63.08	62.80	64.18	61.07
50th Percentile (Median)	69.97	70.66	72.22	72.50	72.73	74.07	73.96	75.93	72.76
75th Percentile	80.76	80.43	80.85	80.85	80.77	81.82	82.17	83.33	81.37
90th Percentile	87.18	86.21	86.05	86.75	86.67	87.50	88.00	88.35	87.09
# Units	256	246	235	242	249	211	196	210	231

If the number of units or hospitals is less than five, comparison data are suppressed to maintain confidentiality. If the number of units or hospitals is less than 20, comparison data may vary substantially over the time period and should be used with caution. For additional information, please refer to NDNQI reference documents.

Phelps Memorial Hospital

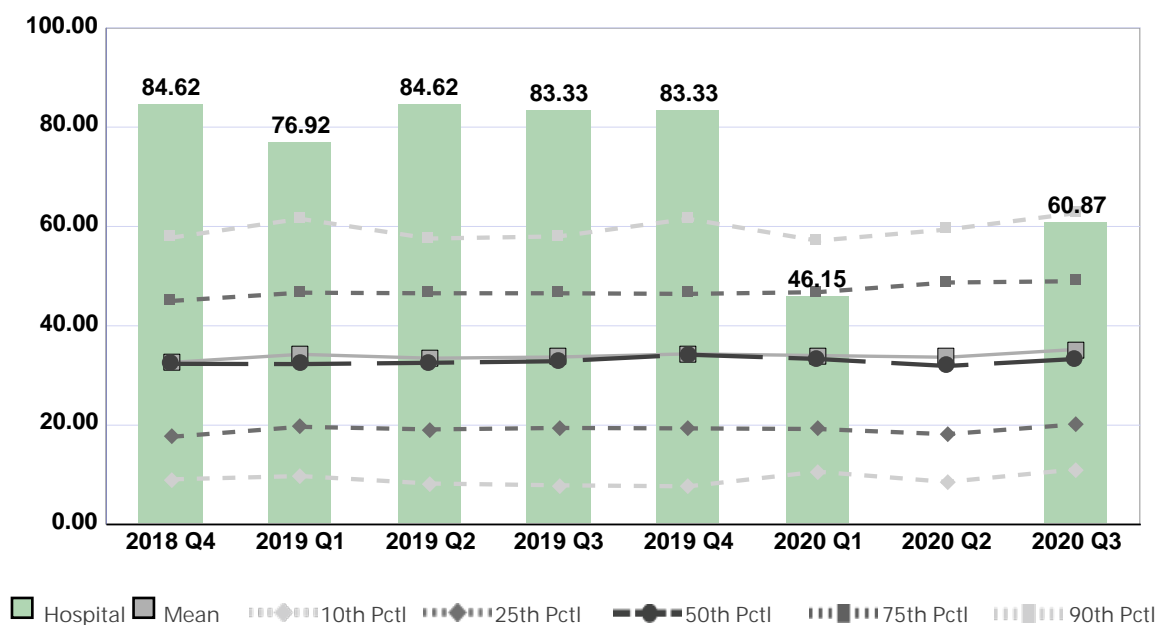
Compared by: All Hospitals

Peer Group: All Hospitals

Unit Type: Labor and Delivery

Unit: Labor and Delivery

Measure: Percent of Direct Care RNs with Specialty Nursing Certification



Quarter	2018 Q4	2019 Q1	2019 Q2	2019 Q3	2019 Q4	2020 Q1	2020 Q2	2020 Q3	Average
Unit	84.62	76.92	84.62	83.33	83.33	46.15	No Data	60.87	74.26
Mean	32.63	34.26	33.48	33.72	34.35	34.02	33.67	35.25	33.92
Standard Deviation	19.60	19.60	19.47	19.46	19.51	18.24	19.31	19.82	19.38
10th Percentile	9.09	9.76	8.26	7.89	7.69	10.64	8.57	11.11	9.13
25th Percentile	17.65	19.67	19.15	19.44	19.35	19.23	18.18	20.17	19.11
50th Percentile (Median)	32.35	32.30	32.56	32.88	34.19	33.33	31.91	33.33	32.86
75th Percentile	45.00	46.67	46.55	46.55	46.43	46.77	48.72	48.98	46.96
90th Percentile	57.73	61.54	57.58	58.00	61.54	57.14	59.38	62.69	59.45
# Units	251	238	227	234	243	202	189	204	224

If the number of units or hospitals is less than five, comparison data are suppressed to maintain confidentiality. If the number of units or hospitals is less than 20, comparison data may vary substantially over the time period and should be used with caution. For additional information, please refer to NDNQI reference documents.

Phelps Memorial Hospital

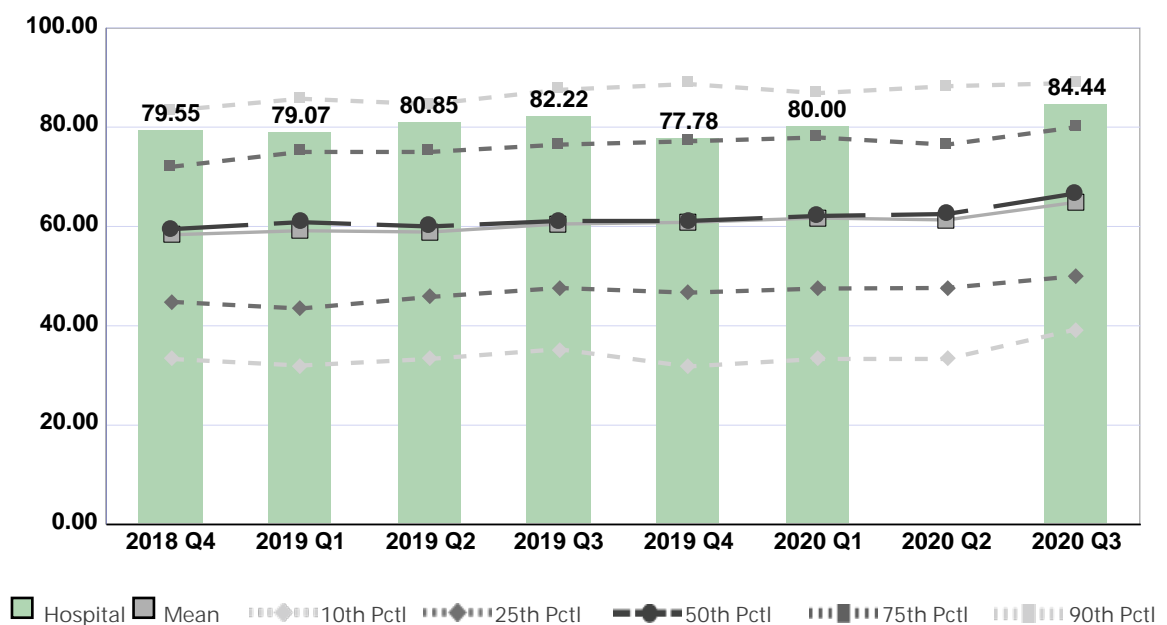
Compared by: All Hospitals

Peer Group: All Hospitals

Unit Type: ED-10,000-29,999 Annual Visits

Unit: ER

Measure: Percent of Direct Care RNs with BSN, MSN, or PhD



Quarter	2018 Q4	2019 Q1	2019 Q2	2019 Q3	2019 Q4	2020 Q1	2020 Q2	2020 Q3	Average
Unit	79.55	79.07	80.85	82.22	77.78	80.00	No Data	84.44	80.56
Mean	58.32	59.15	58.88	60.50	60.83	61.70	61.32	64.87	60.70
Standard Deviation	20.34	21.58	21.40	20.93	20.93	21.23	20.22	19.23	20.73
10th Percentile	33.33	32.00	33.33	35.29	31.82	33.33	33.33	39.29	33.97
25th Percentile	44.83	43.48	45.80	47.62	46.67	47.50	47.62	50.00	46.69
50th Percentile (Median)	59.46	60.87	60.00	61.11	61.11	62.12	62.50	66.67	61.73
75th Percentile	72.00	75.00	75.00	76.47	77.14	77.92	76.47	80.00	76.25
90th Percentile	83.33	85.71	84.62	87.50	88.68	86.84	88.24	88.89	86.73
# Units	217	219	204	211	205	174	173	186	199

If the number of units or hospitals is less than five, comparison data are suppressed to maintain confidentiality. If the number of units or hospitals is less than 20, comparison data may vary substantially over the time period and should be used with caution. For additional information, please refer to NDNQI reference documents.

Phelps Memorial Hospital

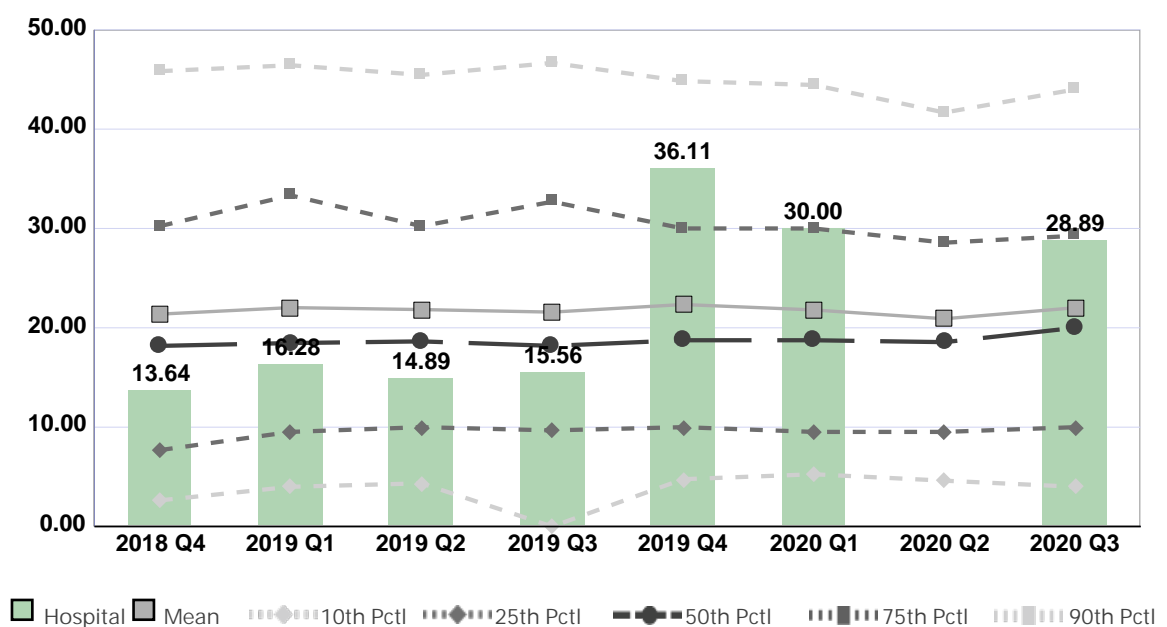
Compared by: All Hospitals

Peer Group: All Hospitals

Unit Type: ED-10,000-29,999 Annual Visits

Unit: ER

Measure: Percent of Direct Care RNs with Specialty Nursing Certification



Quarter	2018 Q4	2019 Q1	2019 Q2	2019 Q3	2019 Q4	2020 Q1	2020 Q2	2020 Q3	Average
Unit	13.64	16.28	14.89	15.56	36.11	30.00	No Data	28.89	22.19
Mean	21.38	22.04	21.84	21.58	22.35	21.80	20.91	22.02	21.74
Standard Deviation	17.12	16.81	15.86	16.94	17.38	15.53	15.07	16.47	16.39
10th Percentile	2.63	4.00	4.35	0.00	4.76	5.26	4.61	4.00	3.70
25th Percentile	7.69	9.52	10.00	9.68	10.00	9.52	9.52	10.00	9.49
50th Percentile (Median)	18.18	18.47	18.63	18.18	18.75	18.75	18.56	20.00	18.69
75th Percentile	30.23	33.33	30.23	32.69	30.00	30.00	28.57	29.27	30.54
90th Percentile	45.83	46.43	45.45	46.67	44.83	44.44	41.67	44.00	44.92
# Units	213	214	198	203	201	169	170	178	193

If the number of units or hospitals is less than five, comparison data are suppressed to maintain confidentiality. If the number of units or hospitals is less than 20, comparison data may vary substantially over the time period and should be used with caution. For additional information, please refer to NDNQI reference documents.

Phelps Memorial Hospital

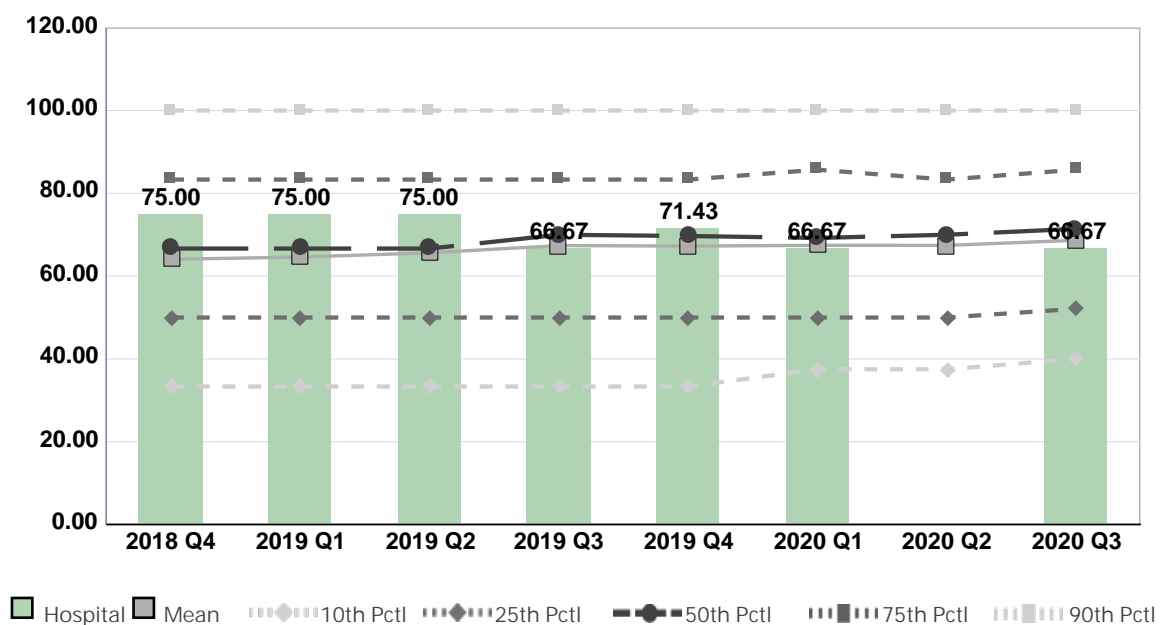
Compared by: All Hospitals

Peer Group: All Hospitals

Unit Type: Interventional Cardiology/Radiology

Unit: Interventional Radiology

Measure: Percent of Direct Care RNs with BSN, MSN, or PhD



Quarter	2018 Q4	2019 Q1	2019 Q2	2019 Q3	2019 Q4	2020 Q1	2020 Q2	2020 Q3	Average
Unit	75.00	75.00	75.00	66.67	71.43	66.67	No Data	66.67	70.92
Mean	64.07	64.61	65.63	67.39	67.26	67.45	67.43	68.67	66.56
Standard Deviation	24.46	25.26	24.18	23.70	23.77	23.43	23.12	23.14	23.88
10th Percentile	33.33	33.33	33.33	33.33	33.33	37.50	37.50	40.00	35.21
25th Percentile	50.00	50.00	50.00	50.00	50.00	50.00	50.00	52.12	50.26
50th Percentile (Median)	66.67	66.67	66.67	70.00	69.70	69.23	70.00	71.43	68.79
75th Percentile	83.33	83.33	83.33	83.33	83.33	85.71	83.33	85.71	83.93
90th Percentile	100.00	100.00	100.00	100.00	100.00	100.00	100.00	100.00	100.00
# Units	477	464	463	481	481	445	440	472	465

If the number of units or hospitals is less than five, comparison data are suppressed to maintain confidentiality. If the number of units or hospitals is less than 20, comparison data may vary substantially over the time period and should be used with caution. For additional information, please refer to NDNQI reference documents.

Phelps Memorial Hospital

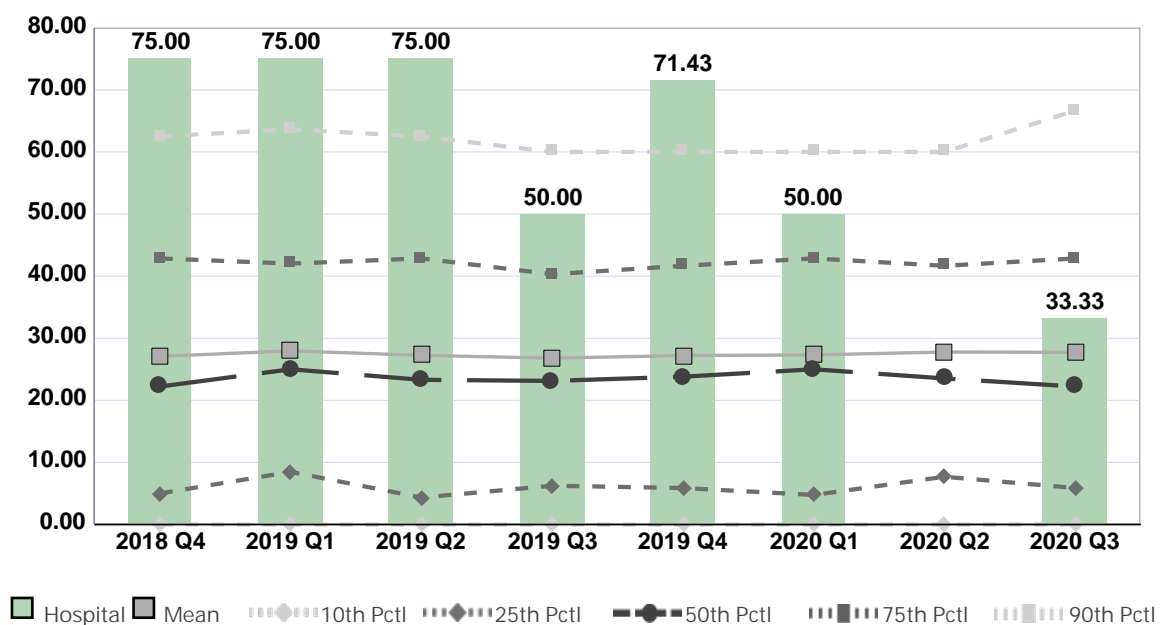
Compared by: All Hospitals

Peer Group: All Hospitals

Unit Type: Interventional Cardiology/Radiology

Unit: Interventional Radiology

Measure: Percent of Direct Care RNs with Specialty Nursing Certification



Quarter	2018 Q4	2019 Q1	2019 Q2	2019 Q3	2019 Q4	2020 Q1	2020 Q2	2020 Q3	Average
Unit	75.00	75.00	75.00	50.00	71.43	50.00	No Data	33.33	61.39
Mean	27.09	27.97	27.25	26.80	27.21	27.31	27.78	27.74	27.39
Standard Deviation	24.55	24.43	24.84	23.99	24.03	24.05	24.74	24.93	24.44
10th Percentile	0.00	0.00	0.00	0.00	0.00	0.00	0.00	0.00	0.00
25th Percentile	5.00	8.48	4.35	6.25	5.88	4.76	7.69	5.88	6.04
50th Percentile (Median)	22.22	25.00	23.30	23.13	23.81	25.00	23.53	22.22	23.53
75th Percentile	42.86	42.02	42.86	40.31	41.67	42.86	41.67	42.86	42.14
90th Percentile	62.50	63.64	62.50	60.00	60.00	60.00	60.00	66.67	61.91
# Units	471	452	450	472	477	439	429	454	456

If the number of units or hospitals is less than five, comparison data are suppressed to maintain confidentiality. If the number of units or hospitals is less than 20, comparison data may vary substantially over the time period and should be used with caution. For additional information, please refer to NDNQI reference documents.

Phelps Memorial Hospital

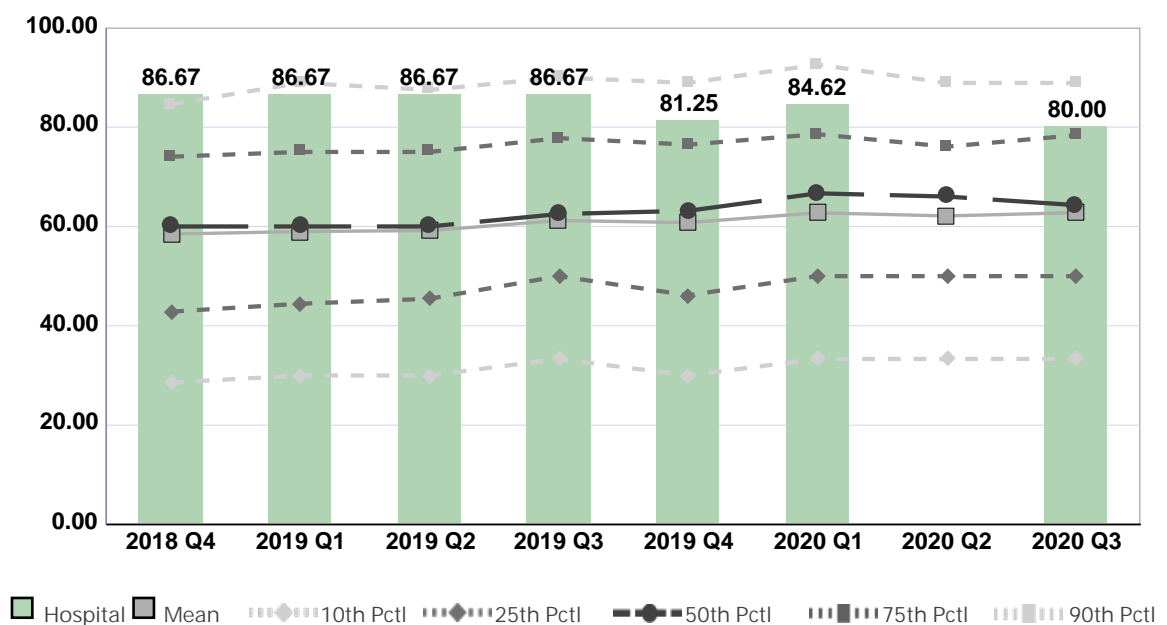
Compared by: All Hospitals

Peer Group: All Hospitals

Unit Type: Endoscopy

Unit: Endoscopy

Measure: Percent of Direct Care RNs with BSN, MSN, or PhD



Quarter	2018 Q4	2019 Q1	2019 Q2	2019 Q3	2019 Q4	2020 Q1	2020 Q2	2020 Q3	Average
Unit	86.67	86.67	86.67	86.67	81.25	84.62	No Data	80.00	84.65
Mean	58.47	58.98	59.17	61.20	60.78	62.75	62.12	62.79	60.78
Standard Deviation	22.03	22.59	22.63	22.15	22.81	23.08	22.12	22.46	22.48
10th Percentile	28.57	30.00	30.00	33.33	30.00	33.33	33.33	33.33	31.49
25th Percentile	42.86	44.44	45.45	50.00	46.15	50.00	50.00	50.00	47.36
50th Percentile (Median)	60.00	60.00	60.00	62.50	63.16	66.67	66.03	64.29	62.83
75th Percentile	74.05	75.00	75.00	77.78	76.47	78.57	76.07	78.38	76.41
90th Percentile	84.62	88.89	87.50	90.00	88.89	92.58	88.89	88.89	88.78
# Units	312	305	307	313	306	280	272	289	298

If the number of units or hospitals is less than five, comparison data are suppressed to maintain confidentiality. If the number of units or hospitals is less than 20, comparison data may vary substantially over the time period and should be used with caution. For additional information, please refer to NDNQI reference documents.

Phelps Memorial Hospital

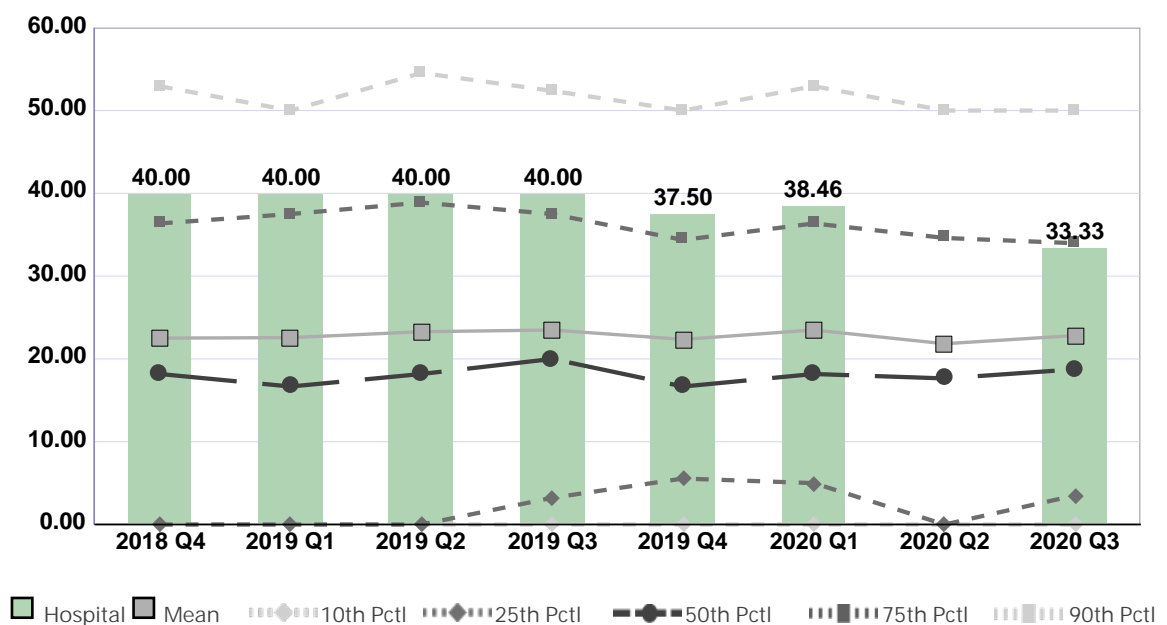
Compared by: All Hospitals

Peer Group: All Hospitals

Unit Type: Endoscopy

Unit: Endoscopy

Measure: Percent of Direct Care RNs with Specialty Nursing Certification



Quarter	2018 Q4	2019 Q1	2019 Q2	2019 Q3	2019 Q4	2020 Q1	2020 Q2	2020 Q3	Average
Unit	40.00	40.00	40.00	40.00	37.50	38.46	No Data	33.33	38.47
Mean	22.52	22.57	23.29	23.49	22.36	23.49	21.83	22.83	22.80
Standard Deviation	22.08	22.29	22.12	22.50	21.46	22.83	20.84	20.81	21.87
10th Percentile	0.00	0.00	0.00	0.00	0.00	0.00	0.00	0.00	0.00
25th Percentile	0.00	0.00	0.00	3.23	5.56	5.00	0.00	3.52	2.16
50th Percentile (Median)	18.18	16.67	18.18	20.00	16.67	18.18	17.65	18.75	18.03
75th Percentile	36.36	37.50	38.89	37.50	34.38	36.36	34.62	33.97	36.20
90th Percentile	52.94	50.00	54.55	52.38	50.00	52.94	50.00	50.00	51.60
# Units	306	299	299	305	303	275	265	280	292

If the number of units or hospitals is less than five, comparison data are suppressed to maintain confidentiality. If the number of units or hospitals is less than 20, comparison data may vary substantially over the time period and should be used with caution. For additional information, please refer to NDNQI reference documents.

Phelps Memorial Hospital

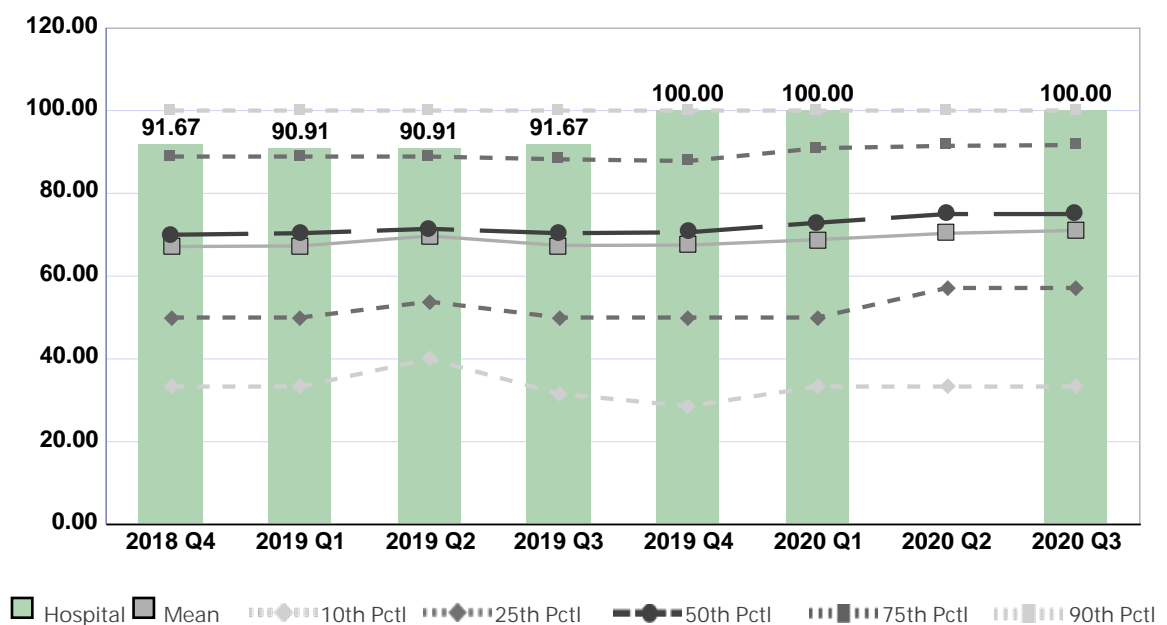
Compared by: All Hospitals

Peer Group: All Hospitals

Unit Type: Cancer Care

Unit: Infusion Unit

Measure: Percent of Direct Care RNs with BSN, MSN, or PhD



Quarter	2018 Q4	2019 Q1	2019 Q2	2019 Q3	2019 Q4	2020 Q1	2020 Q2	2020 Q3	Average
Unit	91.67	90.91	90.91	91.67	100.00	100.00	No Data	100.00	95.02
Mean	67.14	67.30	69.70	67.42	67.50	68.83	70.35	71.04	68.66
Standard Deviation	26.90	26.89	24.44	26.77	26.99	27.17	25.80	25.51	26.31
10th Percentile	33.33	33.33	40.00	31.58	28.57	33.33	33.33	33.33	33.35
25th Percentile	50.00	50.00	53.85	50.00	50.00	50.00	57.14	57.14	52.27
50th Percentile (Median)	70.00	70.37	71.43	70.37	70.59	72.90	75.00	75.00	71.96
75th Percentile	88.89	88.89	88.89	88.24	87.80	90.91	91.48	91.67	89.59
90th Percentile	100.00	100.00	100.00	100.00	100.00	100.00	100.00	100.00	100.00
# Units	421	391	423	445	453	422	396	469	428

If the number of units or hospitals is less than five, comparison data are suppressed to maintain confidentiality. If the number of units or hospitals is less than 20, comparison data may vary substantially over the time period and should be used with caution. For additional information, please refer to NDNQI reference documents.

Phelps Memorial Hospital

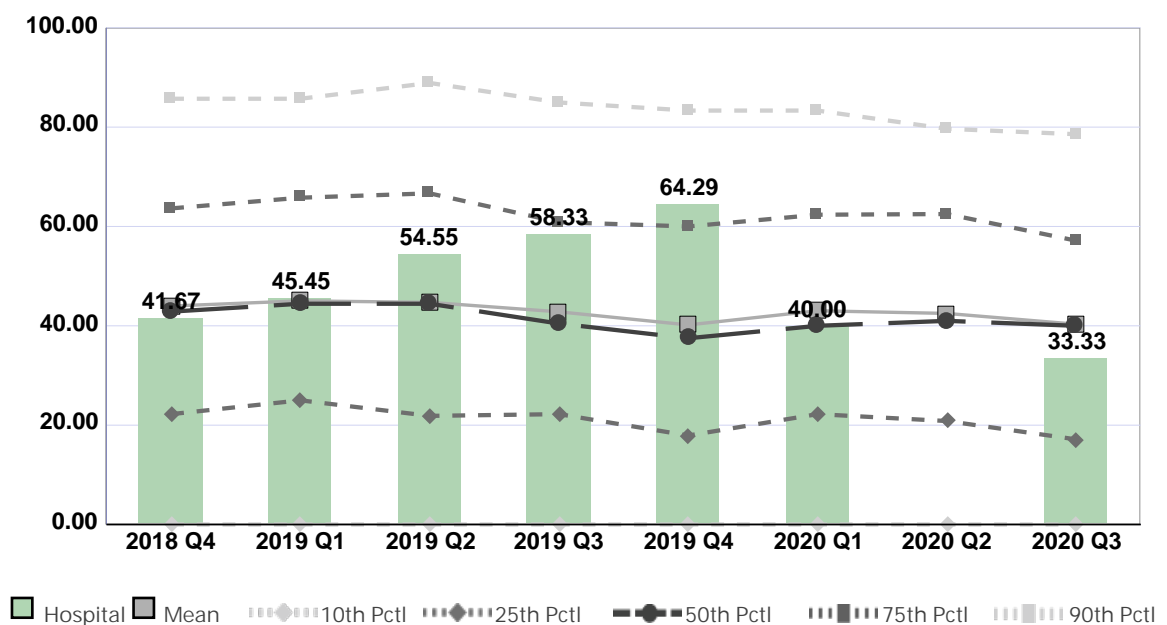
Compared by: All Hospitals

Peer Group: All Hospitals

Unit Type: Cancer Care

Unit: Infusion Unit

Measure: Percent of Direct Care RNs with Specialty Nursing Certification



Quarter	2018 Q4	2019 Q1	2019 Q2	2019 Q3	2019 Q4	2020 Q1	2020 Q2	2020 Q3	Average
Unit	41.67	45.45	54.55	58.33	64.29	40.00	No Data	33.33	48.23
Mean	43.99	45.02	44.73	42.82	40.18	43.03	42.50	40.33	42.82
Standard Deviation	29.55	28.63	29.62	29.35	29.08	28.67	28.31	28.63	28.98
10th Percentile	0.00	0.00	0.00	0.00	0.00	0.00	0.00	0.00	0.00
25th Percentile	22.22	25.00	21.88	22.22	17.91	22.22	20.83	17.14	21.18
50th Percentile (Median)	42.86	44.44	44.44	40.45	37.50	40.00	41.00	40.00	41.34
75th Percentile	63.64	65.79	66.67	60.87	60.00	62.36	62.50	57.14	62.37
90th Percentile	85.71	85.71	88.89	84.96	83.33	83.33	79.66	78.57	83.77
# Units	418	389	421	420	452	420	390	463	422

If the number of units or hospitals is less than five, comparison data are suppressed to maintain confidentiality. If the number of units or hospitals is less than 20, comparison data may vary substantially over the time period and should be used with caution. For additional information, please refer to NDNQI reference documents.

Phelps Memorial Hospital

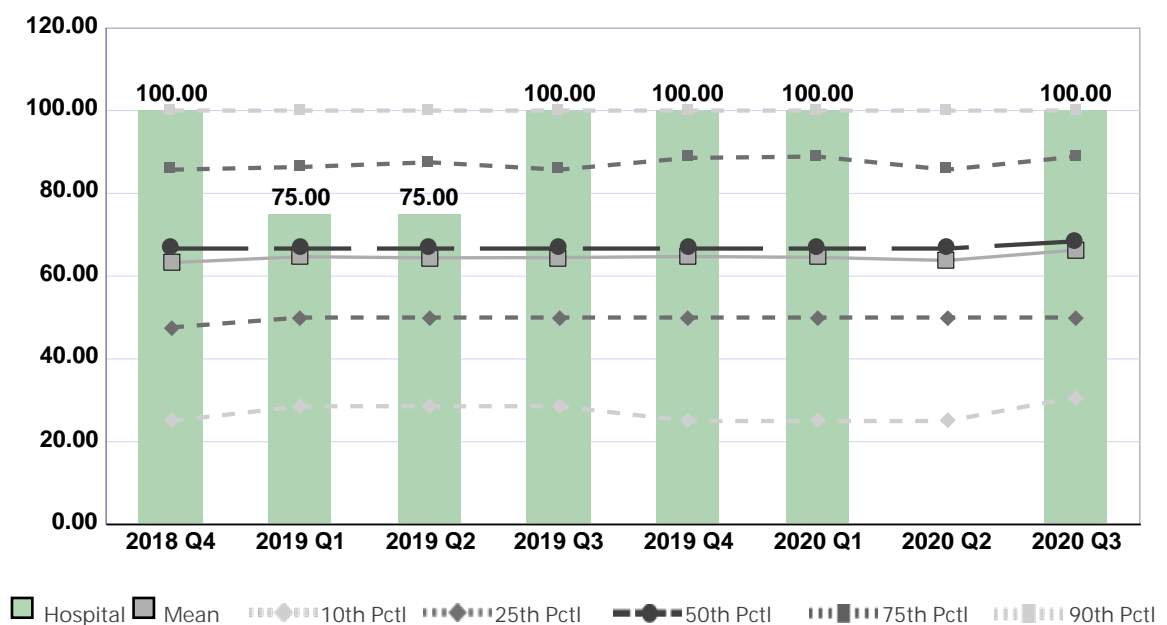
Compared by: All Hospitals

Peer Group: All Hospitals

Unit Type: Procedural Unit

Unit: Pain Management

Measure: Percent of Direct Care RNs with BSN, MSN, or PhD



Quarter	2018 Q4	2019 Q1	2019 Q2	2019 Q3	2019 Q4	2020 Q1	2020 Q2	2020 Q3	Average
Unit	100.00	75.00	75.00	100.00	100.00	100.00	No Data	100.00	92.86
Mean	63.26	64.69	64.42	64.49	64.73	64.54	63.79	66.30	64.53
Standard Deviation	27.33	27.19	27.30	26.64	27.95	27.63	27.63	26.85	27.32
10th Percentile	25.00	28.57	28.57	28.57	25.00	25.00	25.00	30.77	27.06
25th Percentile	47.62	50.00	50.00	50.00	50.00	50.00	50.00	50.00	49.70
50th Percentile (Median)	66.67	66.67	66.67	66.67	66.67	66.67	66.67	68.42	66.89
75th Percentile	85.71	86.36	87.50	85.71	88.56	88.89	85.71	88.89	87.17
90th Percentile	100.00	100.00	100.00	100.00	100.00	100.00	100.00	100.00	100.00
# Units	485	487	478	511	488	478	453	481	483

If the number of units or hospitals is less than five, comparison data are suppressed to maintain confidentiality. If the number of units or hospitals is less than 20, comparison data may vary substantially over the time period and should be used with caution. For additional information, please refer to NDNQI reference documents.

Phelps Memorial Hospital

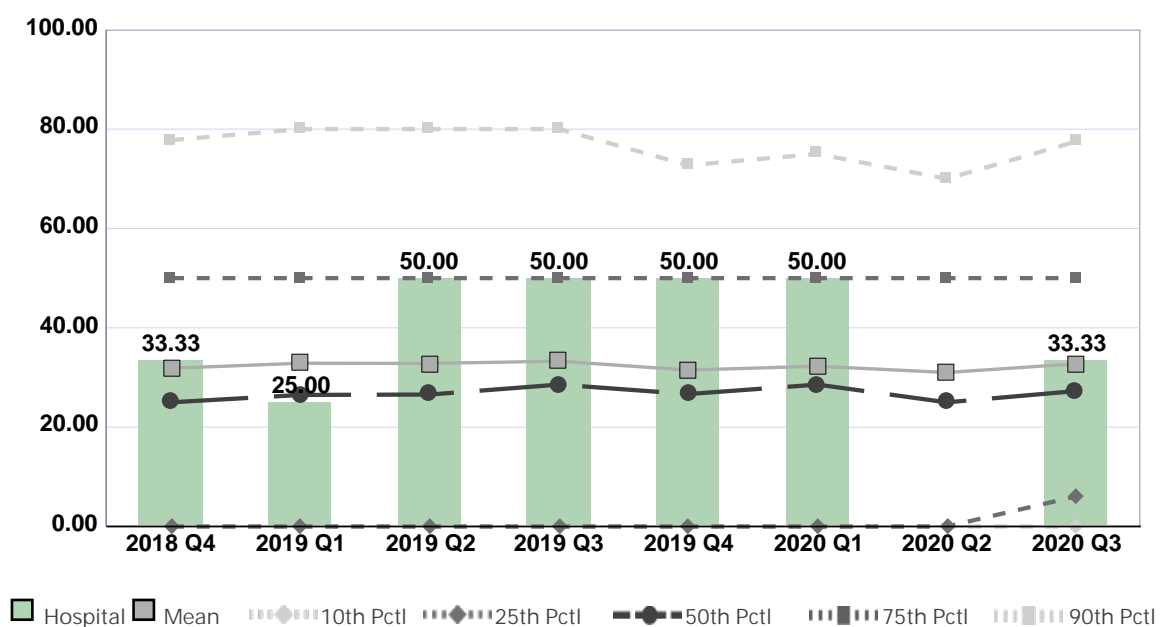
Compared by: All Hospitals

Peer Group: All Hospitals

Unit Type: Procedural Unit

Unit: Pain Management

Measure: Percent of Direct Care RNs with Specialty Nursing Certification



Quarter	2018 Q4	2019 Q1	2019 Q2	2019 Q3	2019 Q4	2020 Q1	2020 Q2	2020 Q3	Average
Unit	33.33	25.00	50.00	50.00	50.00	50.00	No Data	33.33	41.67
Mean	31.86	32.87	32.84	33.29	31.49	32.27	31.01	32.76	32.30
Standard Deviation	30.14	30.02	30.55	30.61	29.59	29.26	29.00	29.83	29.87
10th Percentile	0.00	0.00	0.00	0.00	0.00	0.00	0.00	0.00	0.00
25th Percentile	0.00	0.00	0.00	0.00	0.00	0.00	0.00	6.07	0.76
50th Percentile (Median)	25.00	26.49	26.57	28.57	26.67	28.57	25.00	27.27	26.77
75th Percentile	50.00	50.00	50.00	50.00	50.00	50.00	50.00	50.00	50.00
90th Percentile	77.78	80.00	80.00	80.00	72.73	75.00	70.00	77.50	76.63
# Units	477	480	468	501	484	473	444	460	473

If the number of units or hospitals is less than five, comparison data are suppressed to maintain confidentiality. If the number of units or hospitals is less than 20, comparison data may vary substantially over the time period and should be used with caution. For additional information, please refer to NDNQI reference documents.

Phelps Memorial Hospital

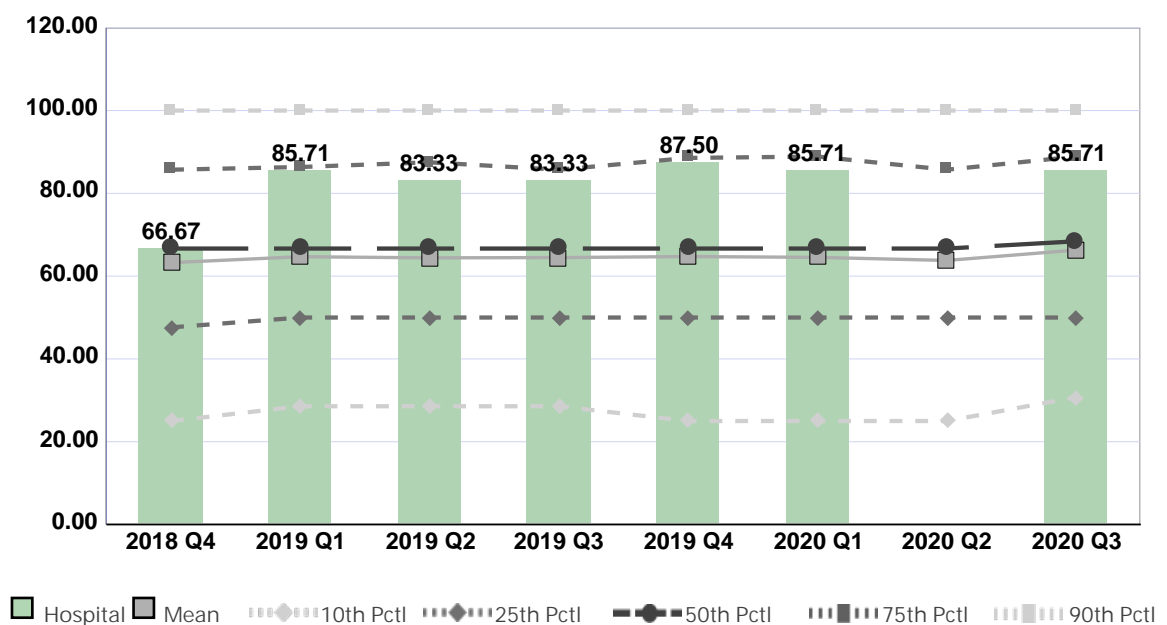
Compared by: All Hospitals

Peer Group: All Hospitals

Unit Type: Procedural Unit

Unit: Wound Clinic

Measure: Percent of Direct Care RNs with BSN, MSN, or PhD



Quarter	2018 Q4	2019 Q1	2019 Q2	2019 Q3	2019 Q4	2020 Q1	2020 Q2	2020 Q3	Average
Unit	66.67	85.71	83.33	83.33	87.50	85.71	No Data	85.71	82.57
Mean	63.26	64.69	64.42	64.49	64.73	64.54	63.79	66.30	64.53
Standard Deviation	27.33	27.19	27.30	26.64	27.95	27.63	27.63	26.85	27.32
10th Percentile	25.00	28.57	28.57	28.57	25.00	25.00	25.00	30.77	27.06
25th Percentile	47.62	50.00	50.00	50.00	50.00	50.00	50.00	50.00	49.70
50th Percentile (Median)	66.67	66.67	66.67	66.67	66.67	66.67	66.67	68.42	66.89
75th Percentile	85.71	86.36	87.50	85.71	88.56	88.89	85.71	88.89	87.17
90th Percentile	100.00	100.00	100.00	100.00	100.00	100.00	100.00	100.00	100.00
# Units	485	487	478	511	488	478	453	481	483

If the number of units or hospitals is less than five, comparison data are suppressed to maintain confidentiality. If the number of units or hospitals is less than 20, comparison data may vary substantially over the time period and should be used with caution. For additional information, please refer to NDNQI reference documents.

Phelps Memorial Hospital

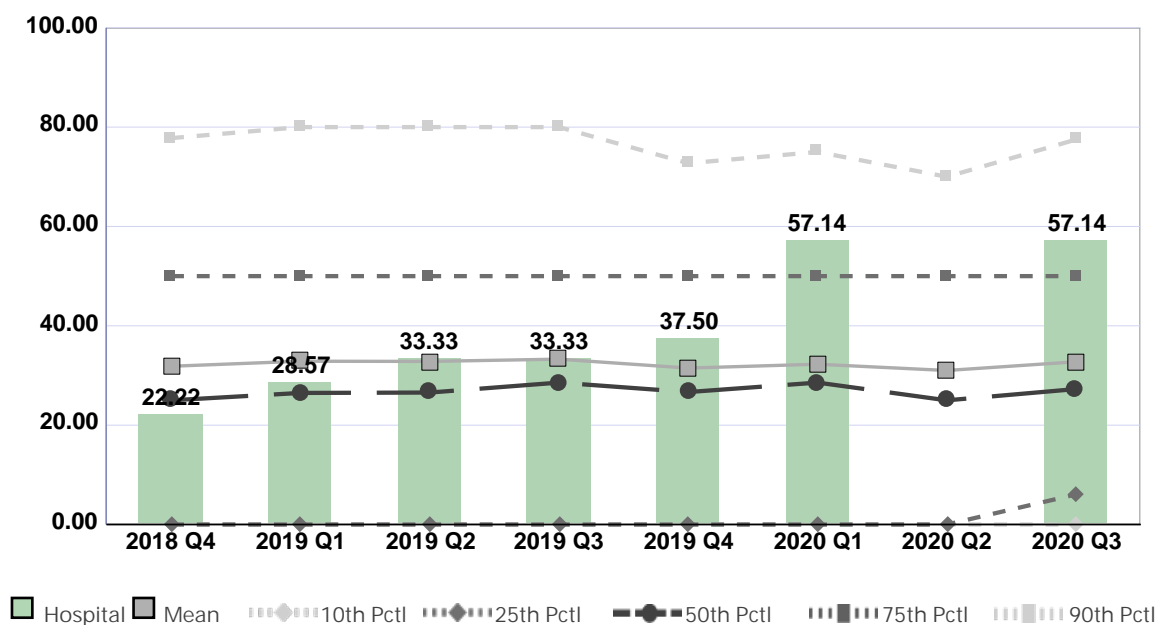
Compared by: All Hospitals

Peer Group: All Hospitals

Unit Type: Procedural Unit

Unit: Wound Clinic

Measure: Percent of Direct Care RNs with Specialty Nursing Certification



Quarter	2018 Q4	2019 Q1	2019 Q2	2019 Q3	2019 Q4	2020 Q1	2020 Q2	2020 Q3	Average
Unit	22.22	28.57	33.33	33.33	37.50	57.14	No Data	57.14	38.46
Mean	31.86	32.87	32.84	33.29	31.49	32.27	31.01	32.76	32.30
Standard Deviation	30.14	30.02	30.55	30.61	29.59	29.26	29.00	29.83	29.87
10th Percentile	0.00	0.00	0.00	0.00	0.00	0.00	0.00	0.00	0.00
25th Percentile	0.00	0.00	0.00	0.00	0.00	0.00	0.00	6.07	0.76
50th Percentile (Median)	25.00	26.49	26.57	28.57	26.67	28.57	25.00	27.27	26.77
75th Percentile	50.00	50.00	50.00	50.00	50.00	50.00	50.00	50.00	50.00
90th Percentile	77.78	80.00	80.00	80.00	72.73	75.00	70.00	77.50	76.63
# Units	477	480	468	501	484	473	444	460	473

If the number of units or hospitals is less than five, comparison data are suppressed to maintain confidentiality. If the number of units or hospitals is less than 20, comparison data may vary substantially over the time period and should be used with caution. For additional information, please refer to NDNQI reference documents.

Phelps Memorial Hospital

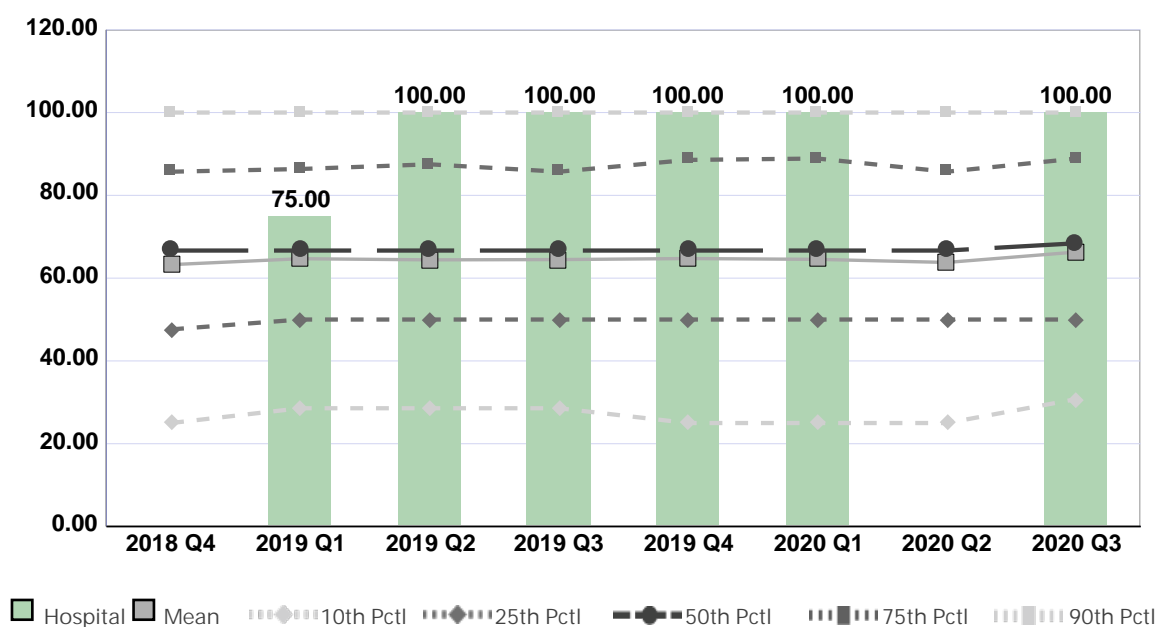
Compared by: All Hospitals

Peer Group: All Hospitals

Unit Type: Procedural Unit

Unit: Hyperbaric

Measure: Percent of Direct Care RNs with BSN, MSN, or PhD



Quarter	2018 Q4	2019 Q1	2019 Q2	2019 Q3	2019 Q4	2020 Q1	2020 Q2	2020 Q3	Average
Unit	No Data	75.00	100.00	100.00	100.00	100.00	No Data	100.00	95.83
Mean	63.26	64.69	64.42	64.49	64.73	64.54	63.79	66.30	64.53
Standard Deviation	27.33	27.19	27.30	26.64	27.95	27.63	27.63	26.85	27.32
10th Percentile	25.00	28.57	28.57	28.57	25.00	25.00	25.00	30.77	27.06
25th Percentile	47.62	50.00	50.00	50.00	50.00	50.00	50.00	50.00	49.70
50th Percentile (Median)	66.67	66.67	66.67	66.67	66.67	66.67	66.67	68.42	66.89
75th Percentile	85.71	86.36	87.50	85.71	88.56	88.89	85.71	88.89	87.17
90th Percentile	100.00	100.00	100.00	100.00	100.00	100.00	100.00	100.00	100.00
# Units	485	487	478	511	488	478	453	481	483

If the number of units or hospitals is less than five, comparison data are suppressed to maintain confidentiality. If the number of units or hospitals is less than 20, comparison data may vary substantially over the time period and should be used with caution. For additional information, please refer to NDNQI reference documents.

Phelps Memorial Hospital

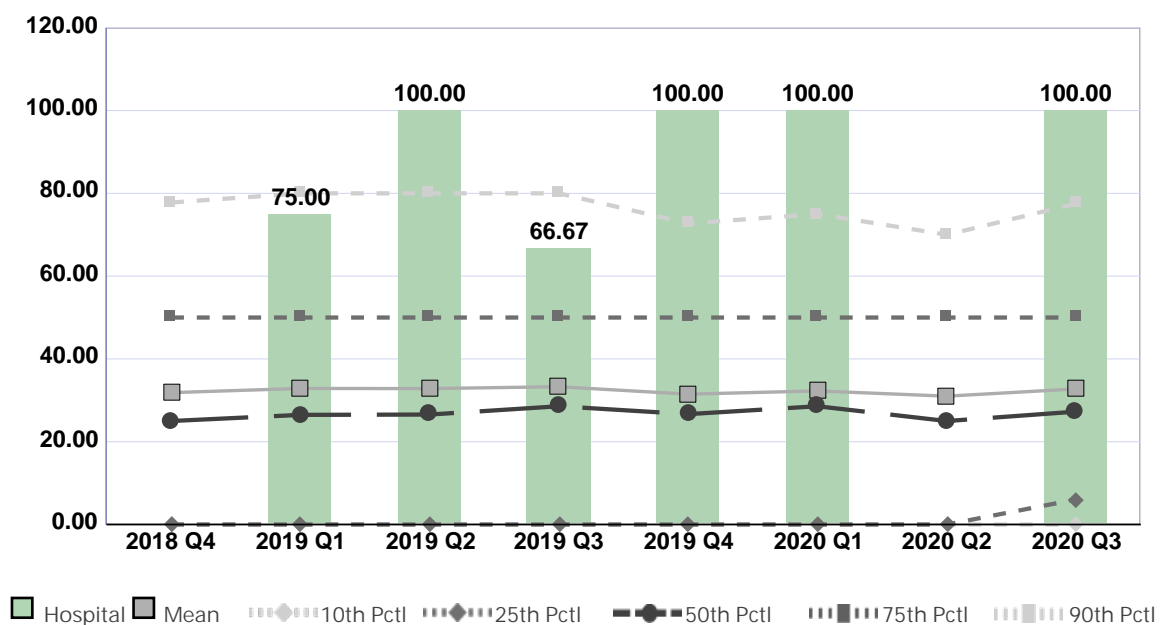
Compared by: All Hospitals

Peer Group: All Hospitals

Unit Type: Procedural Unit

Unit: Hyperbaric

Measure: Percent of Direct Care RNs with Specialty Nursing Certification



Quarter	2018 Q4	2019 Q1	2019 Q2	2019 Q3	2019 Q4	2020 Q1	2020 Q2	2020 Q3	Average
Unit	No Data	75.00	100.00	66.67	100.00	100.00	No Data	100.00	90.28
Mean	31.86	32.87	32.84	33.29	31.49	32.27	31.01	32.76	32.30
Standard Deviation	30.14	30.02	30.55	30.61	29.59	29.26	29.00	29.83	29.87
10th Percentile	0.00	0.00	0.00	0.00	0.00	0.00	0.00	0.00	0.00
25th Percentile	0.00	0.00	0.00	0.00	0.00	0.00	0.00	6.07	0.76
50th Percentile (Median)	25.00	26.49	26.57	28.57	26.67	28.57	25.00	27.27	26.77
75th Percentile	50.00	50.00	50.00	50.00	50.00	50.00	50.00	50.00	50.00
90th Percentile	77.78	80.00	80.00	80.00	72.73	75.00	70.00	77.50	76.63
# Units	477	480	468	501	484	473	444	460	473

If the number of units or hospitals is less than five, comparison data are suppressed to maintain confidentiality. If the number of units or hospitals is less than 20, comparison data may vary substantially over the time period and should be used with caution. For additional information, please refer to NDNQI reference documents.

Phelps Memorial Hospital

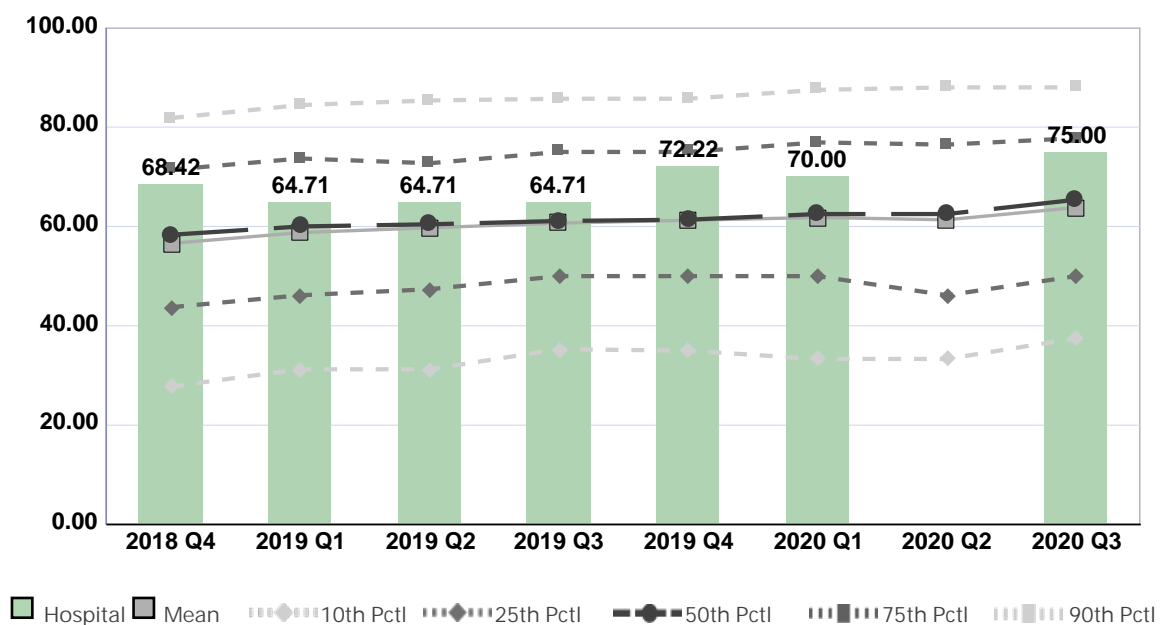
Compared by: All Hospitals

Peer Group: All Hospitals

Unit Type: OR-On call staff after hours

Unit: OR

Measure: Percent of Direct Care RNs with BSN, MSN, or PhD



Quarter	2018 Q4	2019 Q1	2019 Q2	2019 Q3	2019 Q4	2020 Q1	2020 Q2	2020 Q3	Average
Unit	68.42	64.71	64.71	64.71	72.22	70.00	No Data	75.00	68.54
Mean	56.59	58.77	59.74	60.67	61.26	61.81	61.35	63.82	60.50
Standard Deviation	20.75	20.94	20.12	20.24	19.33	20.37	20.77	20.19	20.34
10th Percentile	27.78	31.25	31.25	35.29	35.00	33.33	33.33	37.50	33.09
25th Percentile	43.75	46.15	47.37	50.00	50.00	50.00	46.15	50.00	47.93
50th Percentile (Median)	58.33	60.00	60.43	61.11	61.36	62.50	62.50	65.38	61.45
75th Percentile	71.43	73.68	72.73	75.00	75.00	76.92	76.47	77.78	74.88
90th Percentile	81.82	84.44	85.37	85.71	85.71	87.50	88.00	88.00	85.82
# Units	249	246	238	241	229	196	198	206	225

If the number of units or hospitals is less than five, comparison data are suppressed to maintain confidentiality. If the number of units or hospitals is less than 20, comparison data may vary substantially over the time period and should be used with caution. For additional information, please refer to NDNQI reference documents.

Phelps Memorial Hospital

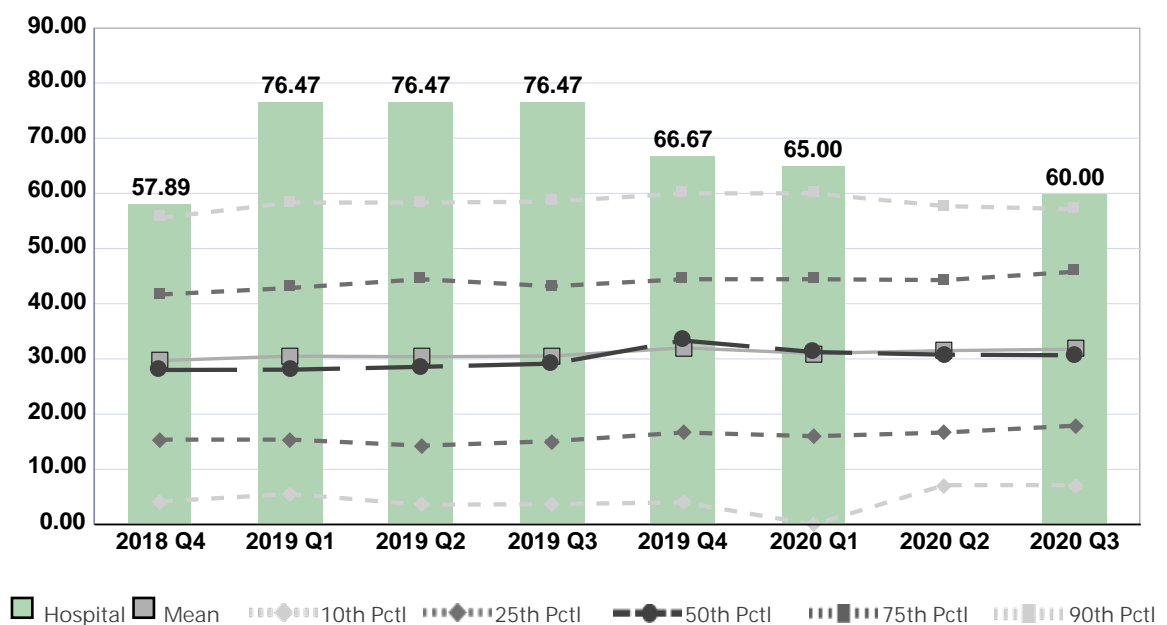
Compared by: All Hospitals

Peer Group: All Hospitals

Unit Type: OR-On call staff after hours

Unit: OR

Measure: Percent of Direct Care RNs with Specialty Nursing Certification



Quarter	2018 Q4	2019 Q1	2019 Q2	2019 Q3	2019 Q4	2020 Q1	2020 Q2	2020 Q3	Average
Unit	57.89	76.47	76.47	76.47	66.67	65.00	No Data	60.00	68.42
Mean	29.69	30.51	30.40	30.53	32.00	31.01	31.50	31.77	30.93
Standard Deviation	18.81	19.78	19.67	19.91	20.81	20.54	19.66	19.30	19.81
10th Percentile	4.17	5.56	3.57	3.70	4.00	0.00	7.14	7.14	4.41
25th Percentile	15.38	15.38	14.29	15.10	16.67	16.00	16.67	17.91	15.93
50th Percentile (Median)	28.00	28.06	28.57	29.15	33.33	31.25	30.77	30.66	29.97
75th Percentile	41.67	42.86	44.44	43.17	44.44	44.44	44.28	45.80	43.89
90th Percentile	55.56	58.33	58.33	58.49	60.00	60.00	57.69	57.14	58.19
# Units	247	242	231	228	223	193	192	196	219

If the number of units or hospitals is less than five, comparison data are suppressed to maintain confidentiality. If the number of units or hospitals is less than 20, comparison data may vary substantially over the time period and should be used with caution. For additional information, please refer to NDNQI reference documents.

Phelps Memorial Hospital

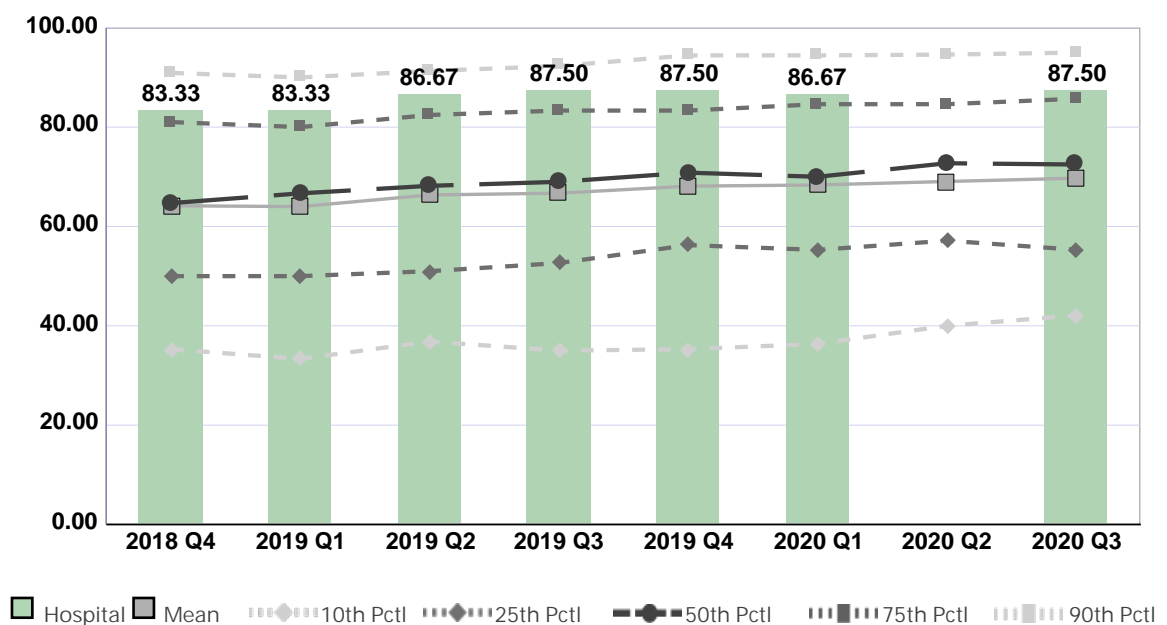
Compared by: All Hospitals

Peer Group: All Hospitals

Unit Type: Post-anesthesia care unit

Unit: PACU

Measure: Percent of Direct Care RNs with BSN, MSN, or PhD



Quarter	2018 Q4	2019 Q1	2019 Q2	2019 Q3	2019 Q4	2020 Q1	2020 Q2	2020 Q3	Average
Unit	83.33	83.33	86.67	87.50	87.50	86.67	No Data	87.50	86.07
Mean	64.17	64.00	66.34	66.70	68.11	68.36	69.05	69.72	67.06
Standard Deviation	21.30	21.13	20.63	21.75	21.39	21.30	20.65	20.73	21.11
10th Percentile	35.29	33.33	36.84	35.00	35.29	36.36	40.00	42.11	36.78
25th Percentile	50.00	50.00	51.00	52.63	56.25	55.28	57.14	55.31	53.45
50th Percentile (Median)	64.71	66.67	68.18	68.99	70.83	70.00	72.73	72.47	69.32
75th Percentile	81.02	80.00	82.45	83.33	83.33	84.62	84.62	85.71	83.13
90th Percentile	90.91	90.00	91.30	92.31	94.44	94.44	94.59	95.00	92.88
# Units	348	323	324	326	331	288	273	296	314

If the number of units or hospitals is less than five, comparison data are suppressed to maintain confidentiality. If the number of units or hospitals is less than 20, comparison data may vary substantially over the time period and should be used with caution. For additional information, please refer to NDNQI reference documents.

Phelps Memorial Hospital

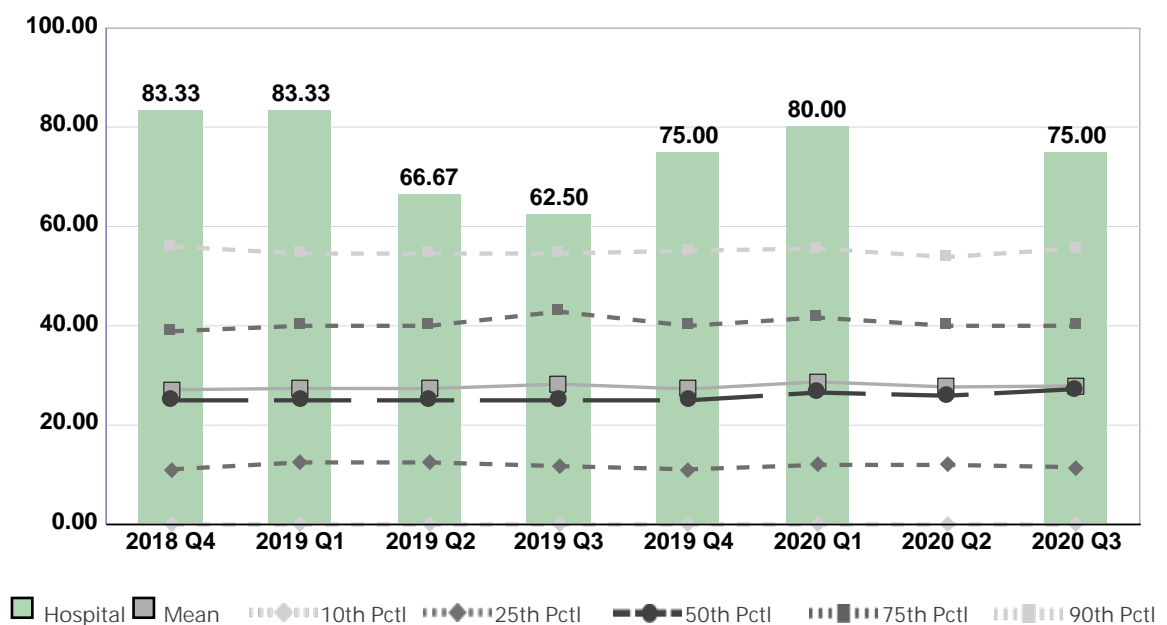
Compared by: All Hospitals

Peer Group: All Hospitals

Unit Type: Post-anesthesia care unit

Unit: PACU

Measure: Percent of Direct Care RNs with Specialty Nursing Certification



Quarter	2018 Q4	2019 Q1	2019 Q2	2019 Q3	2019 Q4	2020 Q1	2020 Q2	2020 Q3	Average
Unit	83.33	83.33	66.67	62.50	75.00	80.00	No Data	75.00	75.12
Mean	27.13	27.40	27.37	28.26	27.29	28.72	27.70	27.89	27.72
Standard Deviation	20.75	20.56	19.79	21.06	20.76	20.76	20.18	20.38	20.53
10th Percentile	0.00	0.00	0.00	0.00	0.00	0.00	0.00	0.00	0.00
25th Percentile	11.11	12.50	12.50	11.76	11.11	12.00	12.00	11.54	11.82
50th Percentile (Median)	25.00	25.00	25.00	25.00	25.00	26.57	25.93	27.27	25.60
75th Percentile	38.89	40.00	40.00	42.86	40.00	41.67	40.00	40.00	40.43
90th Percentile	56.00	54.55	54.55	54.55	55.13	55.56	53.85	55.56	54.97
# Units	341	316	313	313	324	282	265	287	305

If the number of units or hospitals is less than five, comparison data are suppressed to maintain confidentiality. If the number of units or hospitals is less than 20, comparison data may vary substantially over the time period and should be used with caution. For additional information, please refer to NDNQI reference documents.

Phelps Memorial Hospital

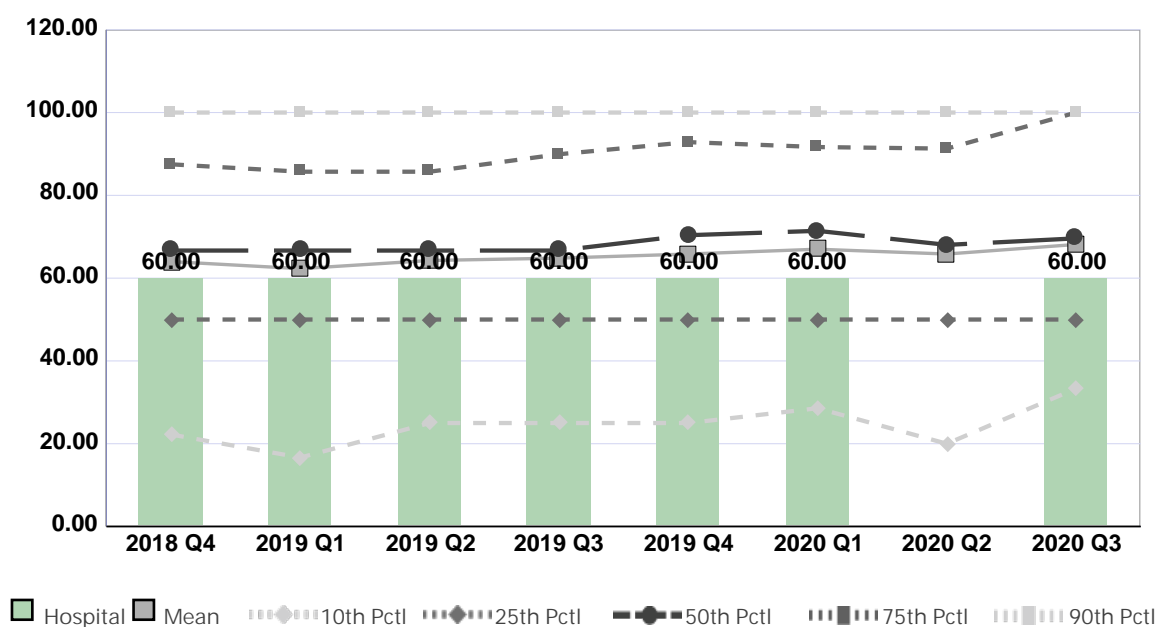
Compared by: All Hospitals

Peer Group: All Hospitals

Unit Type: Cardiac Services

Unit: Outpatient Cardiology

Measure: Percent of Direct Care RNs with BSN, MSN, or PhD



Quarter	2018 Q4	2019 Q1	2019 Q2	2019 Q3	2019 Q4	2020 Q1	2020 Q2	2020 Q3	Average
Unit	60.00	60.00	60.00	60.00	60.00	60.00	No Data	60.00	60.00
Mean	64.00	62.30	64.26	64.84	65.82	66.99	65.83	68.14	65.27
Standard Deviation	29.49	30.22	29.07	29.38	29.44	28.90	29.81	28.51	29.35
10th Percentile	22.22	16.67	25.00	25.00	25.00	28.57	20.00	33.33	24.47
25th Percentile	50.00	50.00	50.00	50.00	50.00	50.00	50.00	50.00	50.00
50th Percentile (Median)	66.67	66.67	66.67	66.67	70.37	71.43	68.03	69.62	68.26
75th Percentile	87.50	85.71	85.71	89.93	92.86	91.67	91.29	100.00	90.58
90th Percentile	100.00	100.00	100.00	100.00	100.00	100.00	100.00	100.00	100.00
# Units	289	292	282	292	297	281	264	284	285

If the number of units or hospitals is less than five, comparison data are suppressed to maintain confidentiality. If the number of units or hospitals is less than 20, comparison data may vary substantially over the time period and should be used with caution. For additional information, please refer to NDNQI reference documents.

Phelps Memorial Hospital

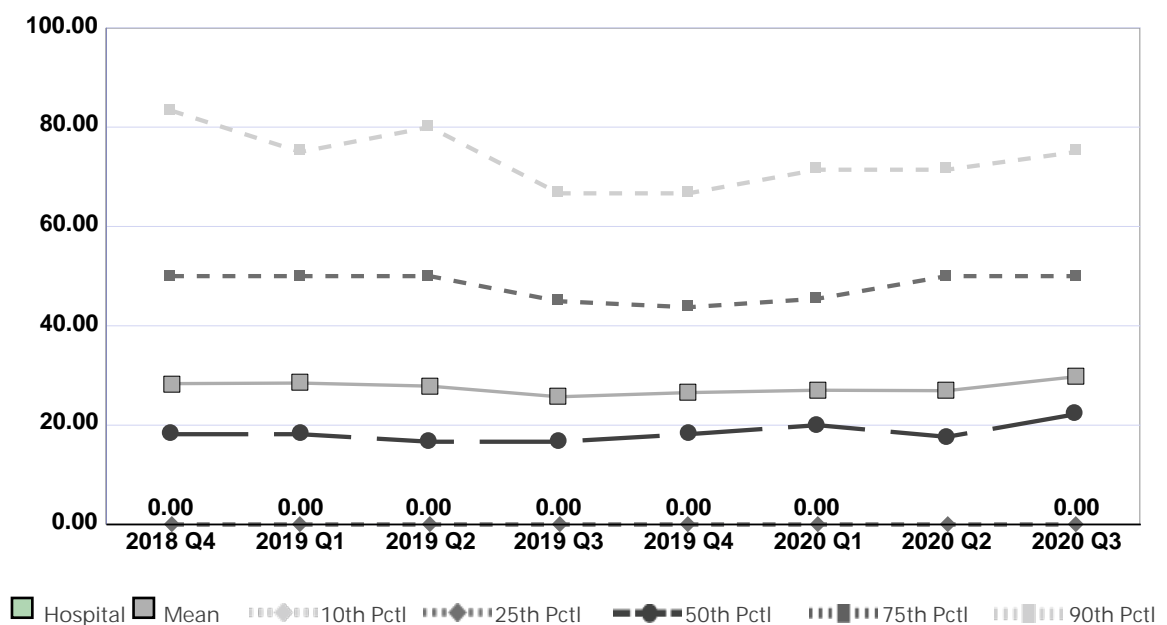
Compared by: All Hospitals

Peer Group: All Hospitals

Unit Type: Cardiac Services

Unit: Outpatient Cardiology

Measure: Percent of Direct Care RNs with Specialty Nursing Certification



Quarter	2018 Q4	2019 Q1	2019 Q2	2019 Q3	2019 Q4	2020 Q1	2020 Q2	2020 Q3	Average
Unit	0.00	0.00	0.00	0.00	0.00	0.00	No Data	0.00	0.00
Mean	28.36	28.48	27.86	25.71	26.56	27.03	26.94	29.76	27.59
Standard Deviation	32.03	31.48	31.39	29.10	28.36	28.67	29.14	30.70	30.11
10th Percentile	0.00	0.00	0.00	0.00	0.00	0.00	0.00	0.00	0.00
25th Percentile	0.00	0.00	0.00	0.00	0.00	0.00	0.00	0.00	0.00
50th Percentile (Median)	18.18	18.18	16.67	16.67	18.18	20.00	17.65	22.22	18.47
75th Percentile	50.00	50.00	50.00	44.95	43.74	45.45	50.00	50.00	48.02
90th Percentile	83.33	75.00	80.00	66.67	66.67	71.43	71.43	75.00	73.69
# Units	285	287	278	288	292	275	259	275	280

If the number of units or hospitals is less than five, comparison data are suppressed to maintain confidentiality. If the number of units or hospitals is less than 20, comparison data may vary substantially over the time period and should be used with caution. For additional information, please refer to NDNQI reference documents.

Phelps Memorial Hospital

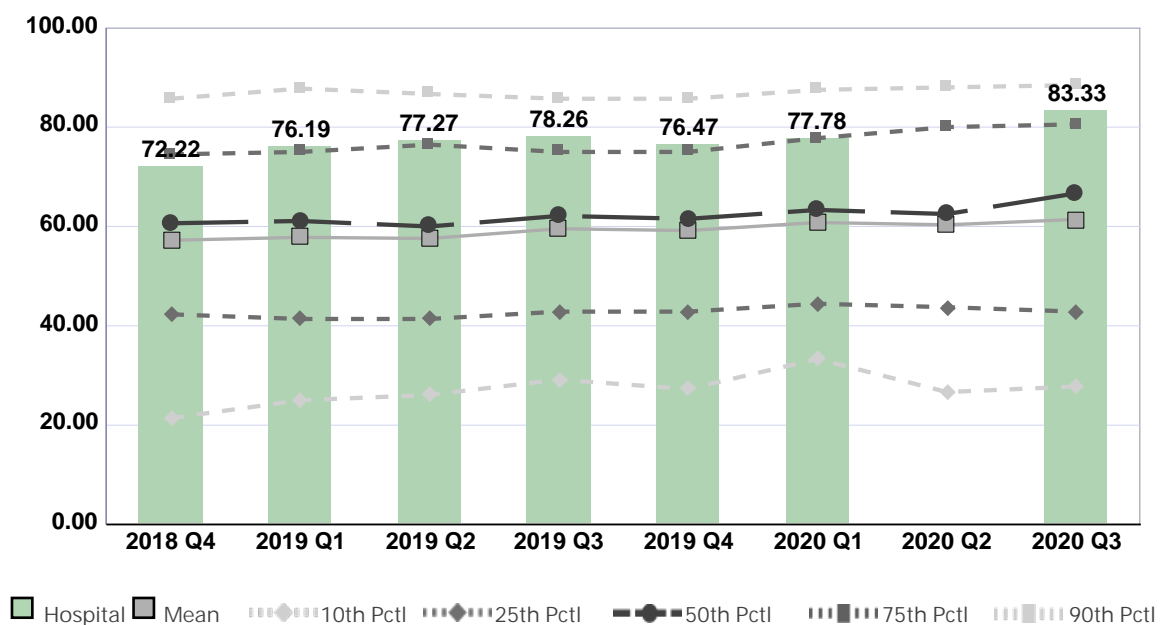
Compared by: All Hospitals

Peer Group: All Hospitals

Unit Type: Pre/Postoperative excludes Phase I

Unit: ASU

Measure: Percent of Direct Care RNs with BSN, MSN, or PhD



Quarter	2018 Q4	2019 Q1	2019 Q2	2019 Q3	2019 Q4	2020 Q1	2020 Q2	2020 Q3	Average
Unit	72.22	76.19	77.27	78.26	76.47	77.78	No Data	83.33	77.36
Mean	57.22	57.81	57.58	59.54	59.18	60.80	60.33	61.42	59.24
Standard Deviation	23.17	23.29	23.10	21.32	21.92	21.35	23.54	23.18	22.61
10th Percentile	21.43	25.00	26.09	29.17	27.27	33.33	26.67	27.78	27.09
25th Percentile	42.31	41.38	41.38	42.86	42.86	44.44	43.75	42.86	42.73
50th Percentile (Median)	60.64	61.11	60.00	62.12	61.54	63.33	62.50	66.67	62.24
75th Percentile	74.51	75.00	76.47	75.00	75.00	77.78	80.00	80.56	76.79
90th Percentile	85.71	87.76	86.67	85.71	85.71	87.50	88.00	88.46	86.94
# Units	198	199	186	182	179	169	147	167	178

If the number of units or hospitals is less than five, comparison data are suppressed to maintain confidentiality. If the number of units or hospitals is less than 20, comparison data may vary substantially over the time period and should be used with caution. For additional information, please refer to NDNQI reference documents.

Phelps Memorial Hospital

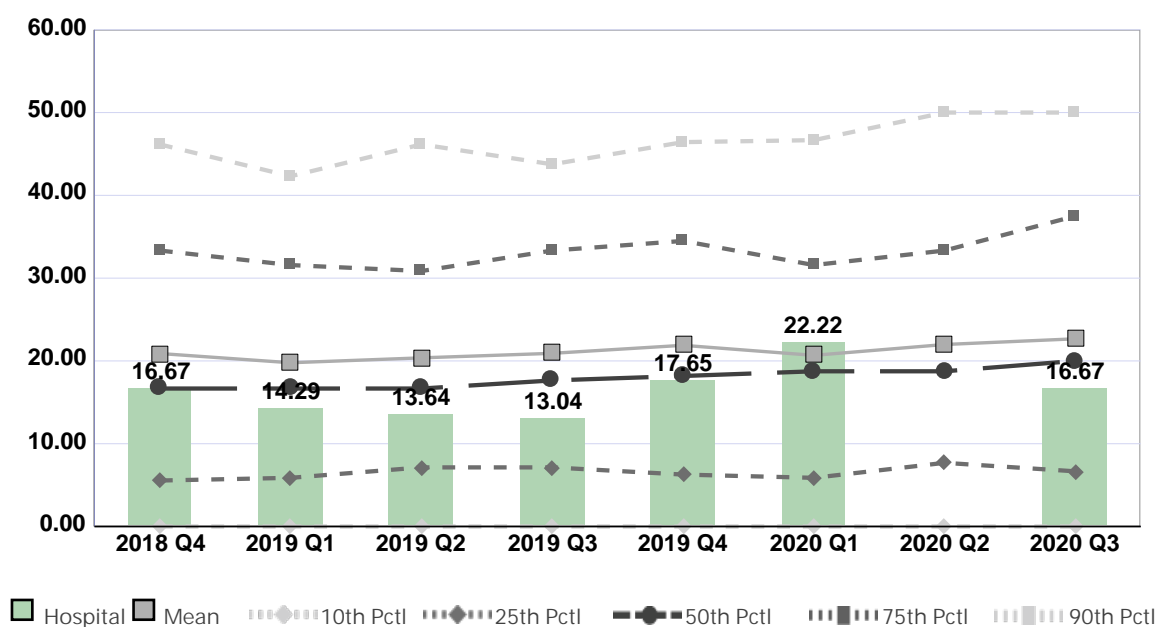
Compared by: All Hospitals

Peer Group: All Hospitals

Unit Type: Pre/Postoperative excludes Phase I

Unit: ASU

Measure: Percent of Direct Care RNs with Specialty Nursing Certification



Quarter	2018 Q4	2019 Q1	2019 Q2	2019 Q3	2019 Q4	2020 Q1	2020 Q2	2020 Q3	Average
Unit	16.67	14.29	13.64	13.04	17.65	22.22	No Data	16.67	16.31
Mean	20.90	19.78	20.37	20.92	21.89	20.68	21.98	22.67	21.15
Standard Deviation	18.52	17.34	17.96	17.59	19.35	17.70	18.87	18.81	18.27
10th Percentile	0.00	0.00	0.00	0.00	0.00	0.00	0.00	0.00	0.00
25th Percentile	5.56	5.88	7.14	7.14	6.27	5.88	7.69	6.67	6.53
50th Percentile (Median)	16.67	16.67	16.67	17.65	18.18	18.75	18.75	20.00	17.92
75th Percentile	33.33	31.58	30.86	33.33	34.50	31.58	33.33	37.50	33.25
90th Percentile	46.15	42.31	46.15	43.75	46.43	46.67	50.00	50.00	46.43
# Units	195	196	180	175	176	165	145	158	174

If the number of units or hospitals is less than five, comparison data are suppressed to maintain confidentiality. If the number of units or hospitals is less than 20, comparison data may vary substantially over the time period and should be used with caution. For additional information, please refer to NDNQI reference documents.