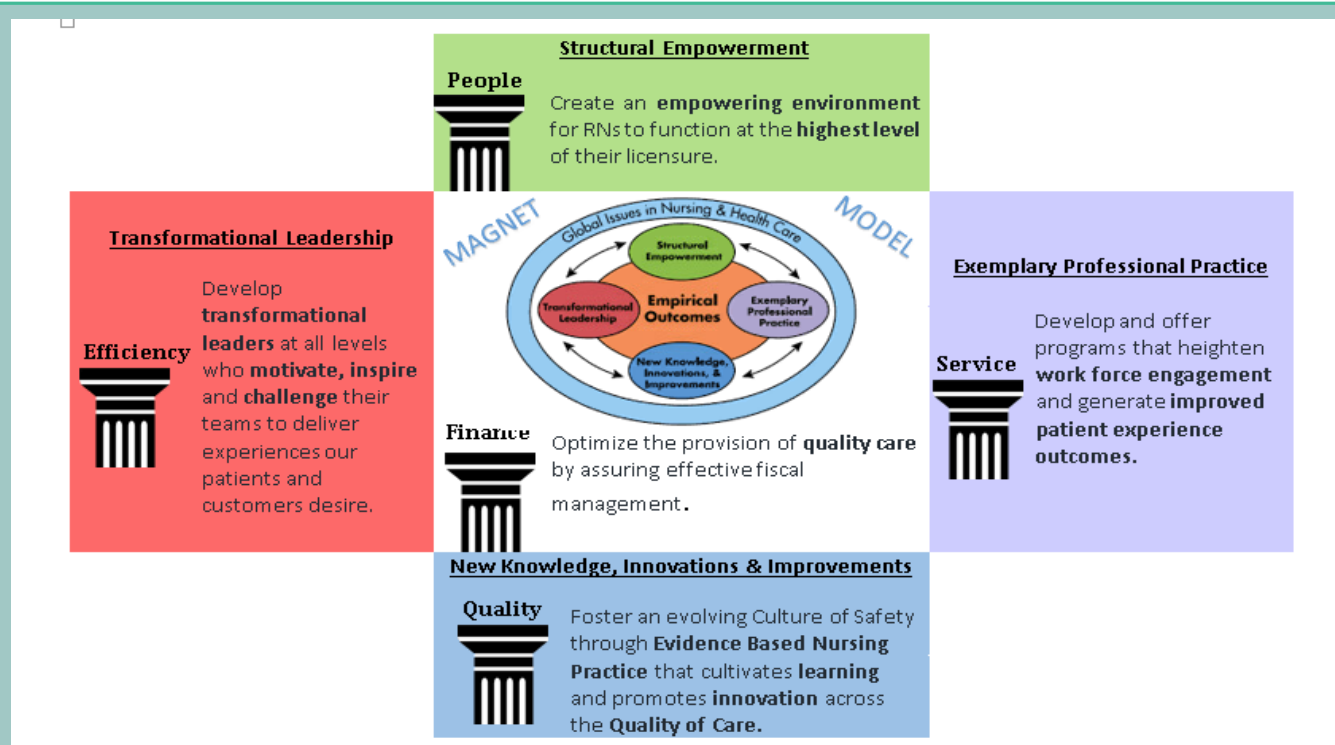
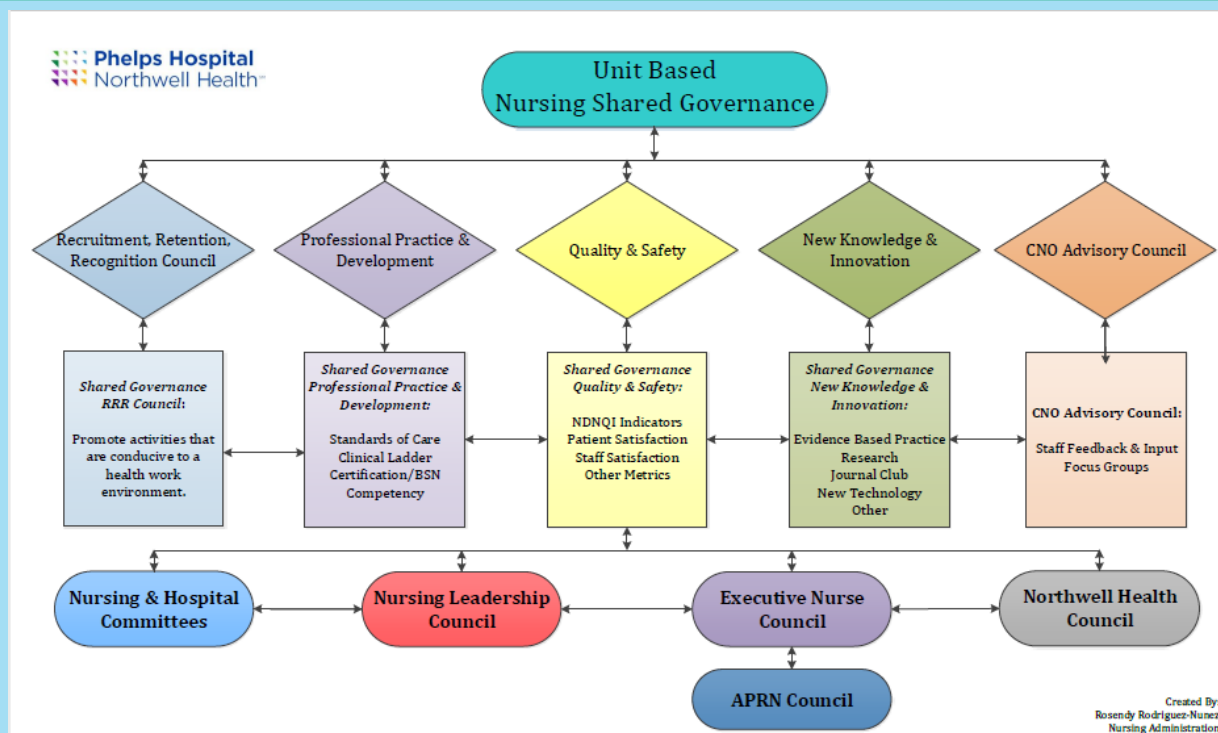


# Vascular Access Team Magnet® Board Centralized Function

## Alignment of Nursing Strategic Goals with Magnet® Model



## Transformational Leadership



**Succession Planning**

## Structural Empowerment

**C.A.R.E.**

Foundation to our Culture

**C**

**Connectedness**

**A**

**Awareness**

**R**

**Respect**

**E**

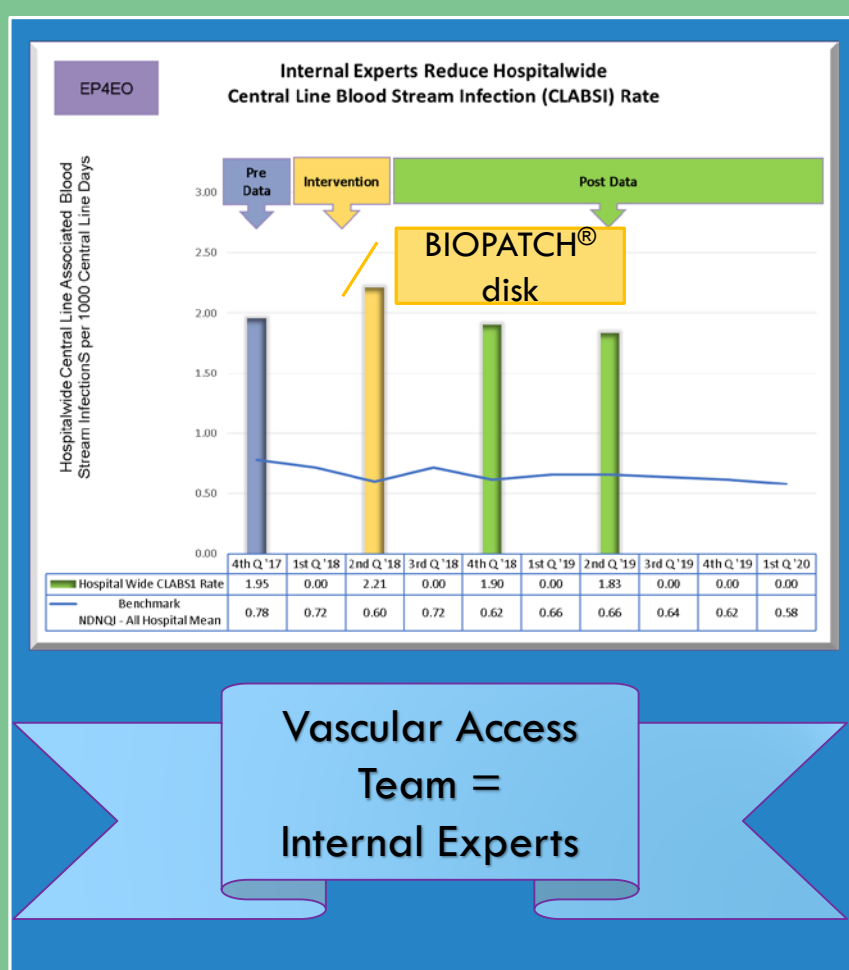
**Empathy**

## Recognizing Nurses on IV Nurse Day



From left to right: Josie Lawlor, Pauline Tedesco, Gerry Bathen, Patti Curtin, Rea San Luis. Missing: Marie Genco, Sophala Nayruhe, Carol Porco and Gabby Zappa

## Exemplary Professional Practice



## New Knowledge, Innovations & Improvements

### New Knowledge

- Internal experts from the Vascular Access Team educate nurses on IV Line Insertion.

### Evidenced Based Practice Adopted

- Implementing the new protocol and influencing the consistent use of the Biopatch® for all central line dressing changes.

### New Knowledge

- Internal experts from the Vascular Access Team participate in Yearly RN Competency

### Nursing Research Study

- Participation in the "Impact of Educational Program on 'Expressions of Humanism' on Caring Behaviors, Patient Experience and Quality Outcomes"



**"Our River of Care is a Bridge to Wellness"**

~ Professional Practice Model

