

Phelps Memorial Hospital

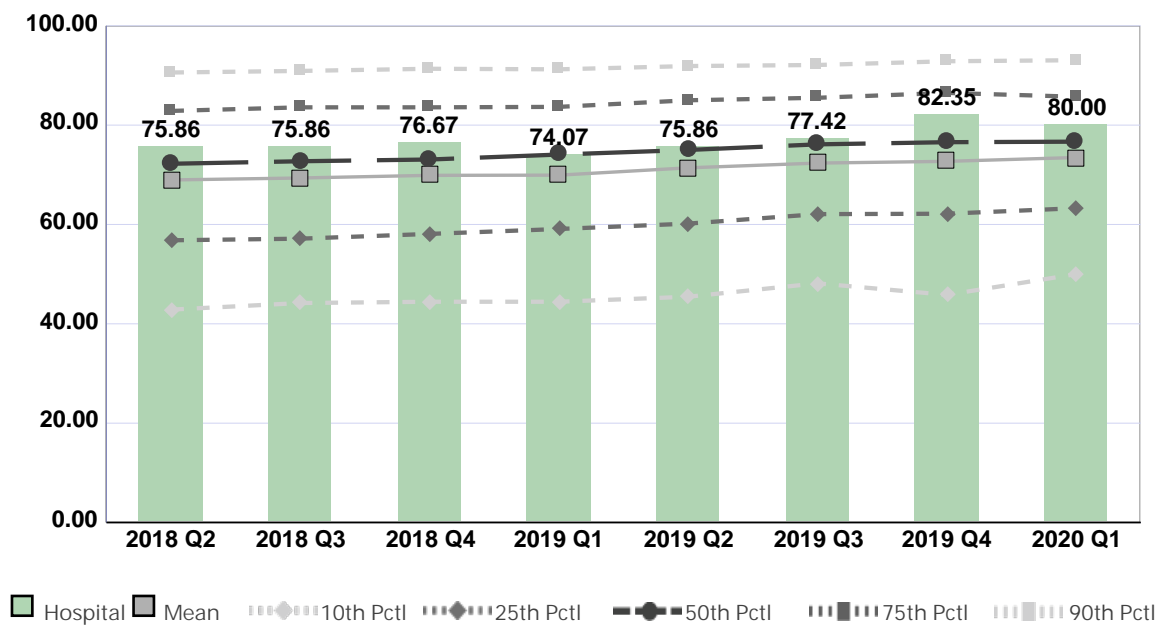
Compared by: All Hospitals

Peer Group: All Hospitals

Unit Type: Adult Critical Care

Unit: Critical Care

Measure: Percent of Direct Care RNs with BSN, MSN, or PhD



Quarter	2018 Q2	2018 Q3	2018 Q4	2019 Q1	2019 Q2	2019 Q3	2019 Q4	2020 Q1	Average
Unit	75.86	75.86	76.67	74.07	75.86	77.42	82.35	80.00	77.26
Mean	68.96	69.36	69.89	69.93	71.40	72.36	72.71	73.48	71.01
Standard Deviation	18.56	18.62	18.70	19.06	17.94	17.55	17.97	16.97	18.17
10th Percentile	42.86	44.19	44.44	44.44	45.45	48.15	45.83	50.00	45.67
25th Percentile	56.82	57.14	58.10	59.09	60.17	62.08	62.16	63.28	59.86
50th Percentile (Median)	72.22	72.73	73.08	74.07	75.00	76.12	76.56	76.67	74.56
75th Percentile	82.86	83.58	83.58	83.67	85.00	85.50	86.49	85.71	84.55
90th Percentile	90.59	90.91	91.34	91.23	91.89	92.11	92.86	93.06	91.75
# Units	946	945	960	915	916	924	893	720	902

If the number of units or hospitals is less than five, comparison data are suppressed to maintain confidentiality. If the number of units or hospitals is less than 20, comparison data may vary substantially over the time period and should be used with caution. For additional information, please refer to NDNQI reference documents.

Phelps Memorial Hospital

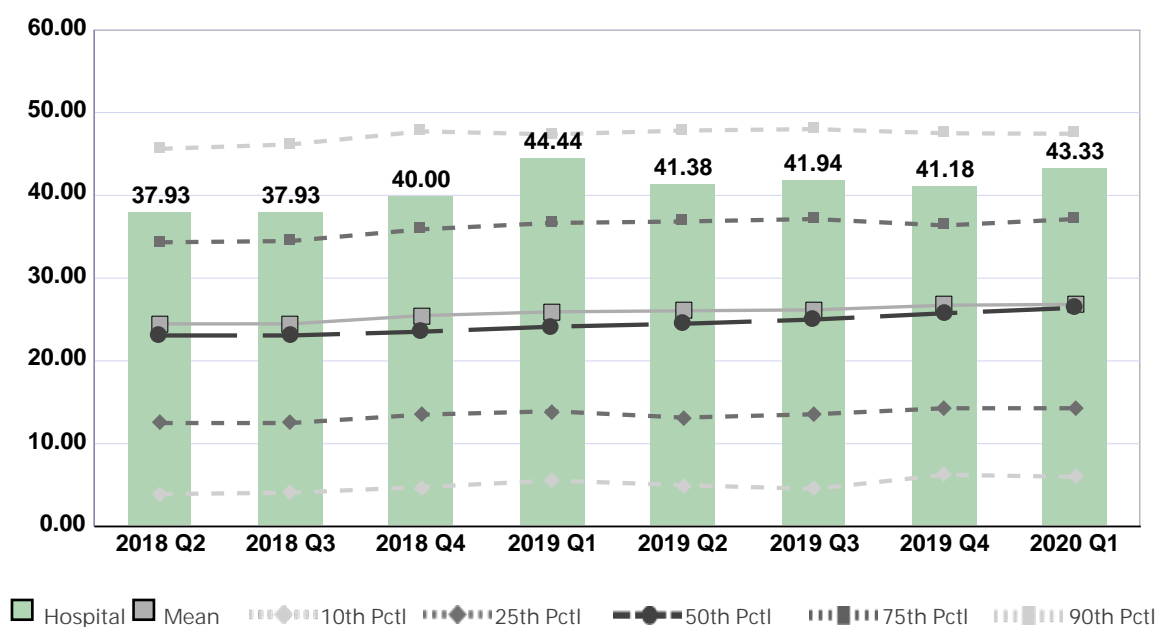
Compared by: All Hospitals

Peer Group: All Hospitals

Unit Type: Adult Critical Care

Unit: Critical Care

Measure: Percent of Direct Care RNs with Specialty Nursing Certification



Quarter	2018 Q2	2018 Q3	2018 Q4	2019 Q1	2019 Q2	2019 Q3	2019 Q4	2020 Q1	Average
Unit	37.93	37.93	40.00	44.44	41.38	41.94	41.18	43.33	41.02
Mean	24.47	24.48	25.47	25.93	26.05	26.17	26.73	26.83	25.77
Standard Deviation	16.10	15.92	16.57	16.45	16.52	16.85	16.31	16.17	16.36
10th Percentile	3.92	4.08	4.76	5.56	5.00	4.55	6.25	6.00	5.01
25th Percentile	12.50	12.50	13.51	13.92	13.16	13.56	14.29	14.29	13.47
50th Percentile (Median)	23.08	23.08	23.53	24.14	24.49	25.00	25.76	26.42	24.44
75th Percentile	34.33	34.48	35.90	36.67	36.84	37.14	36.36	37.14	36.11
90th Percentile	45.61	46.15	47.73	47.37	47.83	48.00	47.50	47.44	47.20
# Units	923	913	934	893	879	888	873	699	875

If the number of units or hospitals is less than five, comparison data are suppressed to maintain confidentiality. If the number of units or hospitals is less than 20, comparison data may vary substantially over the time period and should be used with caution. For additional information, please refer to NDNQI reference documents.

Phelps Memorial Hospital

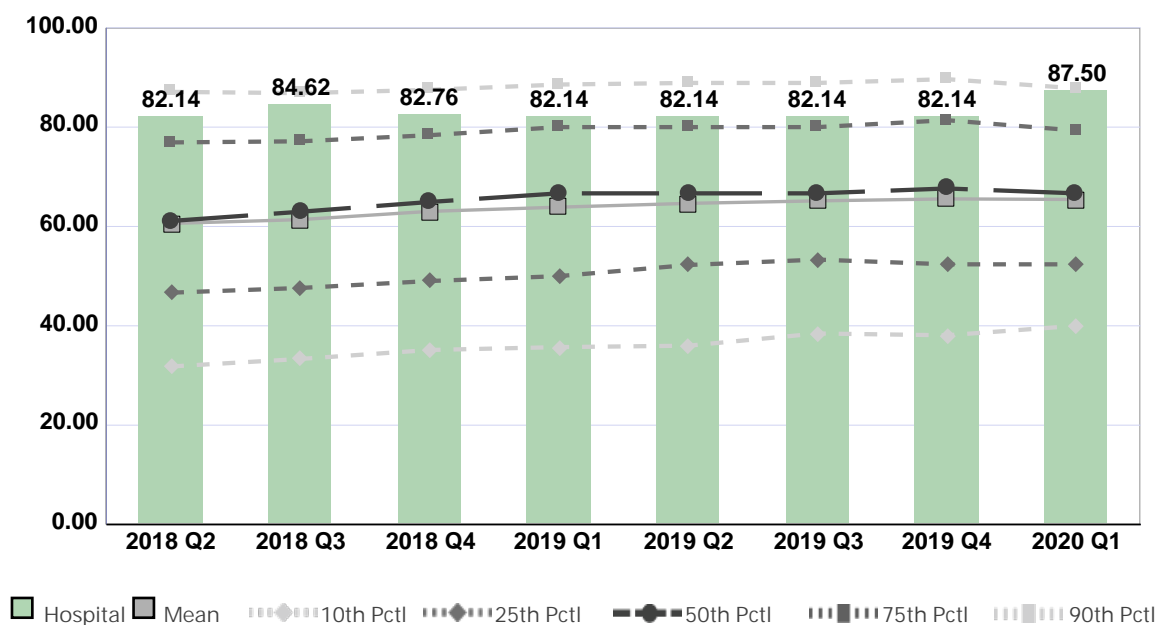
Compared by: All Hospitals

Peer Group: All Hospitals

Unit Type: Adult Step Down

Unit: Intermediate Care (5 South)

Measure: Percent of Direct Care RNs with BSN, MSN, or PhD



Quarter	2018 Q2	2018 Q3	2018 Q4	2019 Q1	2019 Q2	2019 Q3	2019 Q4	2020 Q1	Average
Unit	82.14	84.62	82.76	82.14	82.14	82.14	82.14	87.50	83.20
Mean	60.61	61.38	63.04	63.89	64.65	65.15	65.55	65.44	63.71
Standard Deviation	20.21	19.98	20.39	20.28	19.73	19.01	19.50	18.31	19.68
10th Percentile	31.82	33.33	35.14	35.71	36.00	38.46	38.10	40.00	36.07
25th Percentile	46.67	47.62	49.02	50.00	52.24	53.33	52.38	52.38	50.46
50th Percentile (Median)	61.11	62.96	64.93	66.67	66.67	66.67	67.65	66.67	65.42
75th Percentile	76.92	77.14	78.38	80.00	80.00	80.00	81.40	79.31	79.14
90th Percentile	87.10	86.84	87.50	88.57	88.89	88.89	89.66	87.80	88.16
# Units	658	625	646	608	608	629	605	522	613

If the number of units or hospitals is less than five, comparison data are suppressed to maintain confidentiality. If the number of units or hospitals is less than 20, comparison data may vary substantially over the time period and should be used with caution. For additional information, please refer to NDNQI reference documents.



Phelps Memorial Hospital

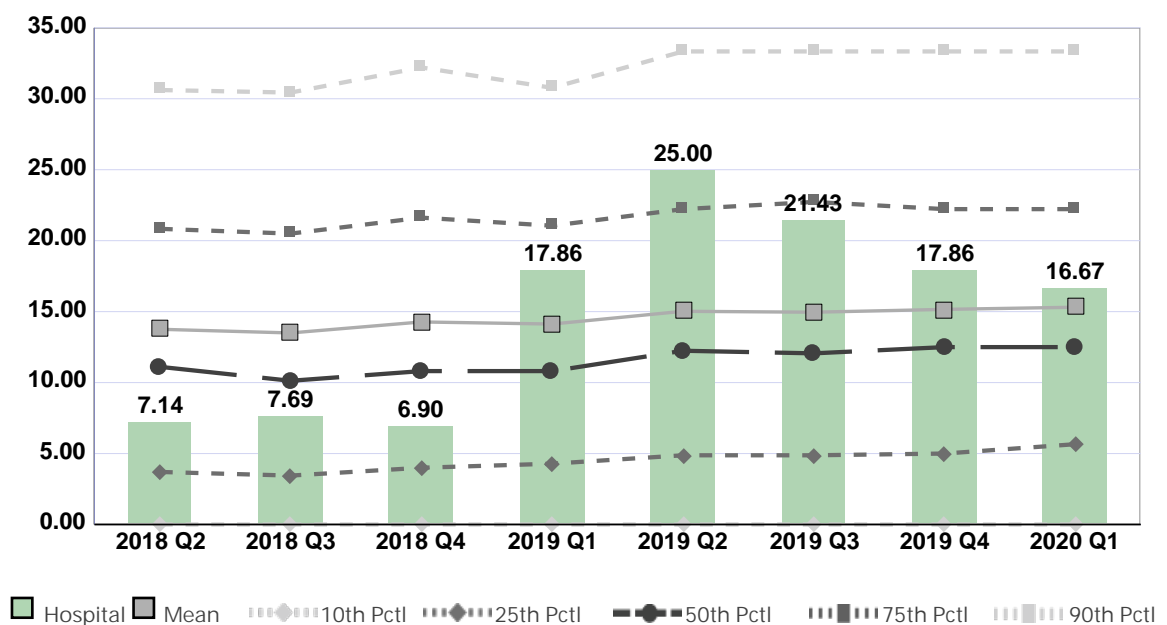
Compared by: All Hospitals

Peer Group: All Hospitals

Unit Type: Adult Step Down

Unit: Intermediate Care (5 South)

Measure: Percent of Direct Care RNs with Specialty Nursing Certification



Quarter	2018 Q2	2018 Q3	2018 Q4	2019 Q1	2019 Q2	2019 Q3	2019 Q4	2020 Q1	Average
Unit	7.14	7.69	6.90	17.86	25.00	21.43	17.86	16.67	15.07
Mean	13.76	13.50	14.27	14.12	15.02	14.96	15.16	15.31	14.51
Standard Deviation	13.06	12.97	13.14	12.79	13.06	13.05	12.81	12.83	12.96
10th Percentile	0.00	0.00	0.00	0.00	0.00	0.00	0.00	0.00	0.00
25th Percentile	3.70	3.45	4.00	4.29	4.88	4.88	5.00	5.66	4.48
50th Percentile (Median)	11.11	10.13	10.81	10.81	12.24	12.06	12.50	12.50	11.52
75th Percentile	20.83	20.50	21.62	21.05	22.22	22.73	22.22	22.22	21.67
90th Percentile	30.61	30.43	32.20	30.77	33.33	33.33	33.33	33.33	32.17
# Units	646	612	633	593	586	606	591	508	597

If the number of units or hospitals is less than five, comparison data are suppressed to maintain confidentiality. If the number of units or hospitals is less than 20, comparison data may vary substantially over the time period and should be used with caution. For additional information, please refer to NDNQI reference documents.

Phelps Memorial Hospital

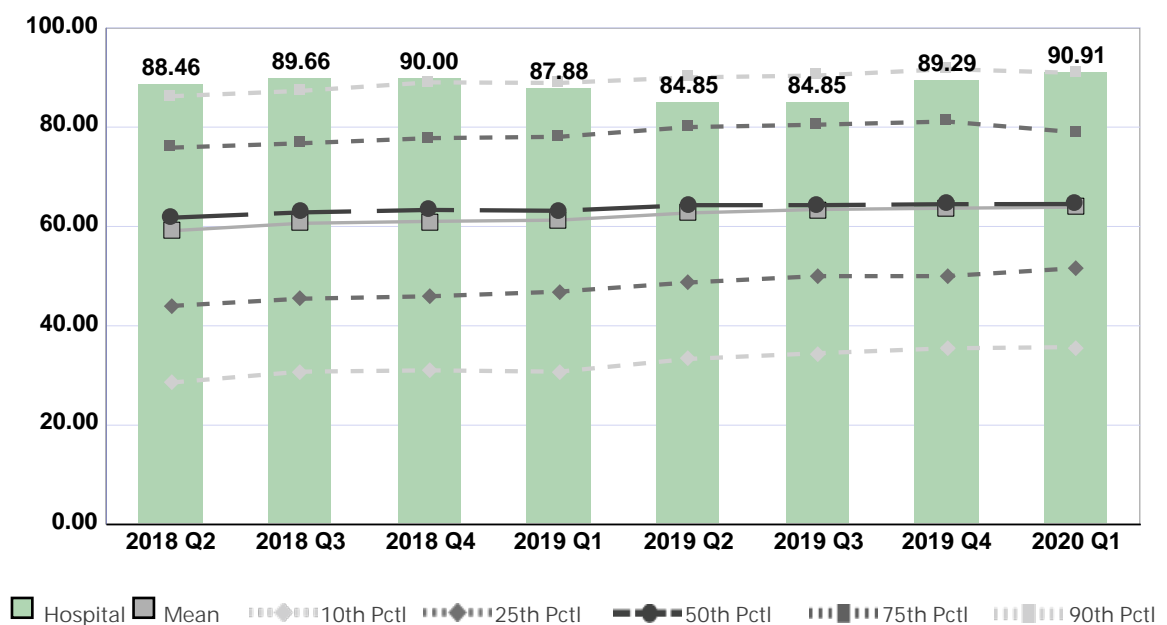
Compared by: All Hospitals

Peer Group: All Hospitals

Unit Type: Adult Medical

Unit: Medicine (5N)

Measure: Percent of Direct Care RNs with BSN, MSN, or PhD



Quarter	2018 Q2	2018 Q3	2018 Q4	2019 Q1	2019 Q2	2019 Q3	2019 Q4	2020 Q1	Average
Unit	88.46	89.66	90.00	87.88	84.85	84.85	89.29	90.91	88.24
Mean	59.13	60.63	61.03	61.27	62.72	63.42	63.67	63.89	61.97
Standard Deviation	21.57	21.58	22.07	21.97	21.80	21.36	21.78	20.62	21.59
10th Percentile	28.57	30.77	31.03	30.77	33.33	34.48	35.48	35.71	32.52
25th Percentile	44.00	45.45	45.95	46.88	48.72	50.00	50.00	51.61	47.83
50th Percentile (Median)	61.76	62.82	63.33	63.16	64.29	64.29	64.48	64.52	63.58
75th Percentile	75.86	76.74	77.78	78.05	80.00	80.49	81.13	78.95	78.63
90th Percentile	86.21	87.30	89.01	88.89	90.00	90.38	91.67	90.91	89.30
# Units	892	890	898	847	837	843	842	695	843

If the number of units or hospitals is less than five, comparison data are suppressed to maintain confidentiality. If the number of units or hospitals is less than 20, comparison data may vary substantially over the time period and should be used with caution. For additional information, please refer to NDNQI reference documents.

Phelps Memorial Hospital

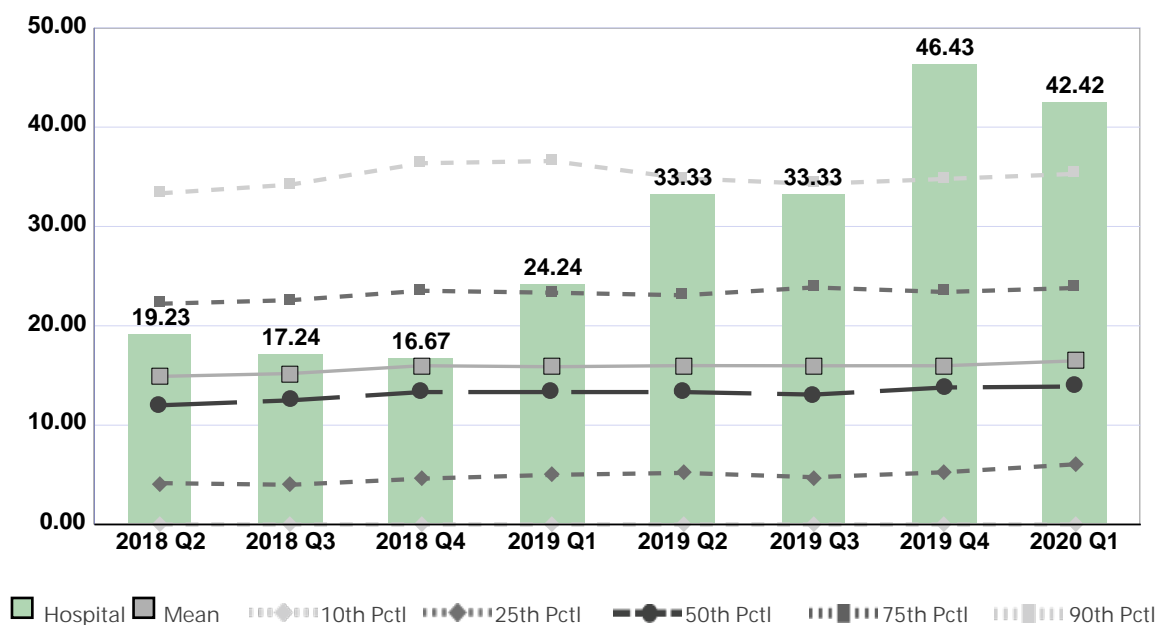
Compared by: All Hospitals

Peer Group: All Hospitals

Unit Type: Adult Medical

Unit: Medicine (5N)

Measure: Percent of Direct Care RNs with Specialty Nursing Certification



Quarter	2018 Q2	2018 Q3	2018 Q4	2019 Q1	2019 Q2	2019 Q3	2019 Q4	2020 Q1	Average
Unit	19.23	17.24	16.67	24.24	33.33	33.33	46.43	42.42	29.11
Mean	14.91	15.20	15.98	15.88	15.99	15.98	15.98	16.48	15.80
Standard Deviation	13.37	14.02	14.25	13.93	13.58	14.11	13.62	13.77	13.83
10th Percentile	0.00	0.00	0.00	0.00	0.00	0.00	0.00	0.00	0.00
25th Percentile	4.17	4.00	4.62	5.00	5.20	4.76	5.26	6.06	4.88
50th Percentile (Median)	12.00	12.50	13.33	13.33	13.33	13.08	13.79	13.89	13.16
75th Percentile	22.22	22.58	23.53	23.33	23.08	23.86	23.40	23.81	23.23
90th Percentile	33.33	34.21	36.36	36.59	34.85	34.29	34.78	35.29	34.96
# Units	877	866	874	825	796	808	829	679	819

If the number of units or hospitals is less than five, comparison data are suppressed to maintain confidentiality. If the number of units or hospitals is less than 20, comparison data may vary substantially over the time period and should be used with caution. For additional information, please refer to NDNQI reference documents.

Phelps Memorial Hospital

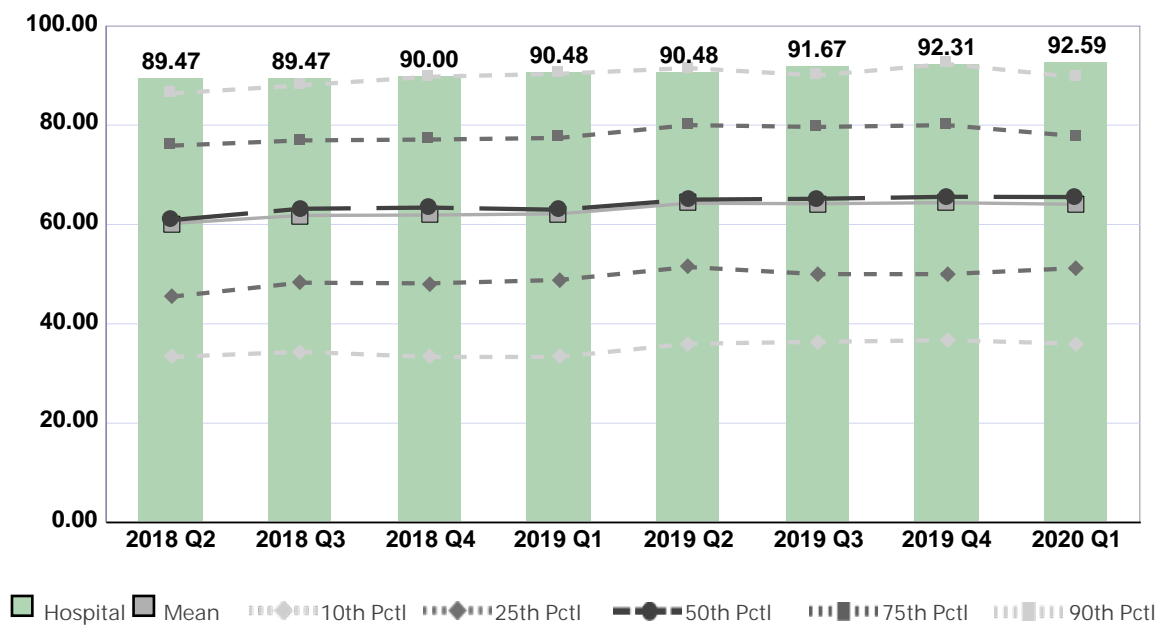
Compared by: All Hospitals

Peer Group: All Hospitals

Unit Type: Adult Surgical

Unit: Ortho (2C)

Measure: Percent of Direct Care RNs with BSN, MSN, or PhD



Quarter	2018 Q2	2018 Q3	2018 Q4	2019 Q1	2019 Q2	2019 Q3	2019 Q4	2020 Q1	Average
Unit	89.47	89.47	90.00	90.48	90.48	91.67	92.31	92.59	90.81
Mean	60.20	61.82	61.90	62.15	64.27	64.19	64.39	64.05	62.87
Standard Deviation	20.38	20.80	21.63	21.77	21.37	21.00	21.44	20.28	21.08
10th Percentile	33.33	34.38	33.33	33.33	36.00	36.36	36.71	36.00	34.93
25th Percentile	45.45	48.28	48.15	48.83	51.43	50.00	50.00	51.22	49.17
50th Percentile (Median)	60.87	63.16	63.40	62.96	65.00	65.17	65.57	65.52	63.96
75th Percentile	75.86	76.92	77.10	77.42	80.00	79.63	80.00	77.78	78.09
90th Percentile	86.36	88.00	89.74	90.32	91.49	90.00	92.31	89.66	89.74
# Units	602	603	592	564	569	562	550	443	561

If the number of units or hospitals is less than five, comparison data are suppressed to maintain confidentiality. If the number of units or hospitals is less than 20, comparison data may vary substantially over the time period and should be used with caution. For additional information, please refer to NDNQI reference documents.



Phelps Memorial Hospital

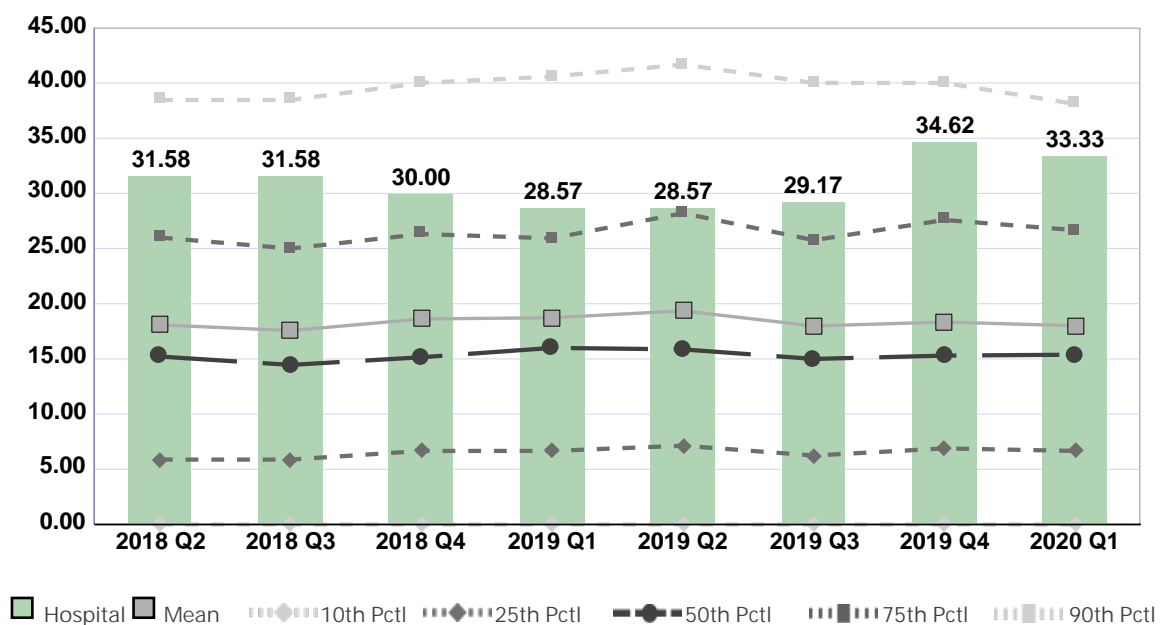
Compared by: All Hospitals

Peer Group: All Hospitals

Unit Type: Adult Surgical

Unit: Ortho (2C)

Measure: Percent of Direct Care RNs with Specialty Nursing Certification



Quarter	2018 Q2	2018 Q3	2018 Q4	2019 Q1	2019 Q2	2019 Q3	2019 Q4	2020 Q1	Average
Unit	31.58	31.58	30.00	28.57	28.57	29.17	34.62	33.33	30.93
Mean	18.08	17.57	18.62	18.73	19.36	17.99	18.34	18.00	18.34
Standard Deviation	15.51	15.22	15.79	15.71	16.62	15.28	14.89	14.55	15.44
10th Percentile	0.00	0.00	0.00	0.00	0.00	0.00	0.00	0.00	0.00
25th Percentile	5.88	5.88	6.67	6.67	7.14	6.25	6.90	6.67	6.51
50th Percentile (Median)	15.22	14.46	15.15	16.00	15.87	15.00	15.30	15.38	15.30
75th Percentile	26.00	25.00	26.32	25.93	28.21	25.76	27.59	26.67	26.43
90th Percentile	38.46	38.46	40.00	40.58	41.67	40.00	40.00	38.10	39.66
# Units	591	588	579	550	546	540	538	429	545

If the number of units or hospitals is less than five, comparison data are suppressed to maintain confidentiality. If the number of units or hospitals is less than 20, comparison data may vary substantially over the time period and should be used with caution. For additional information, please refer to NDNQI reference documents.

Phelps Memorial Hospital

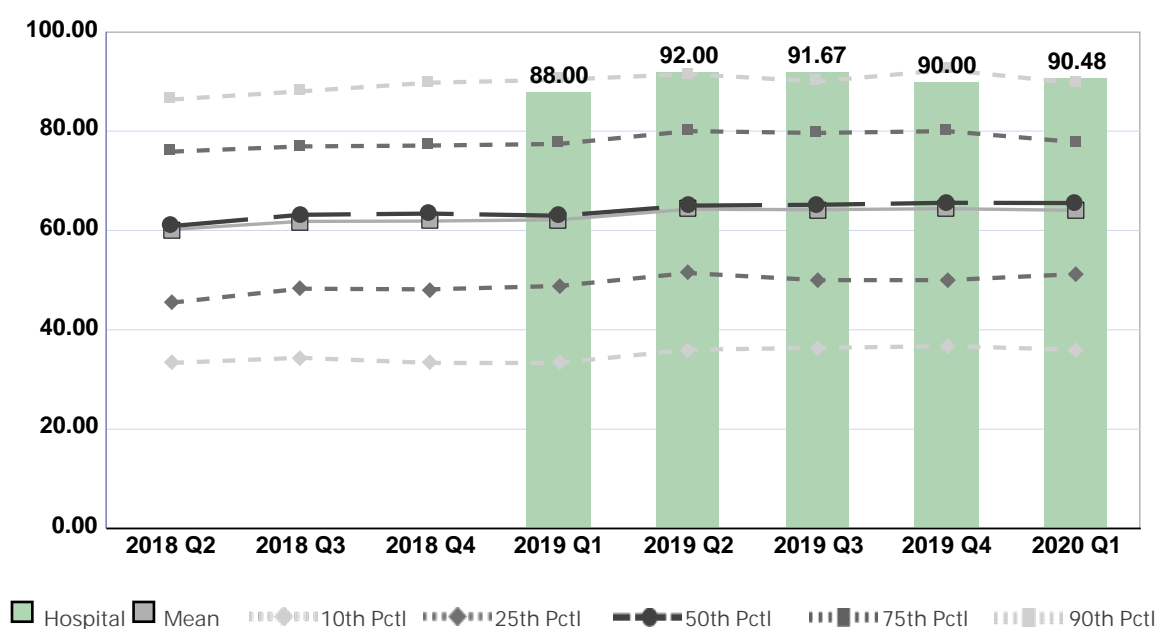
Compared by: All Hospitals

Peer Group: All Hospitals

Unit Type: Adult Surgical

Unit: Surgery -3 North

Measure: Percent of Direct Care RNs with BSN, MSN, or PhD



Quarter	2018 Q2	2018 Q3	2018 Q4	2019 Q1	2019 Q2	2019 Q3	2019 Q4	2020 Q1	Average
Unit	No Data	No Data	No Data	88.00	92.00	91.67	90.00	90.48	90.43
Mean	60.20	61.82	61.90	62.15	64.27	64.19	64.39	64.05	62.87
Standard Deviation	20.38	20.80	21.63	21.77	21.37	21.00	21.44	20.28	21.08
10th Percentile	33.33	34.38	33.33	33.33	36.00	36.36	36.71	36.00	34.93
25th Percentile	45.45	48.28	48.15	48.83	51.43	50.00	50.00	51.22	49.17
50th Percentile (Median)	60.87	63.16	63.40	62.96	65.00	65.17	65.57	65.52	63.96
75th Percentile	75.86	76.92	77.10	77.42	80.00	79.63	80.00	77.78	78.09
90th Percentile	86.36	88.00	89.74	90.32	91.49	90.00	92.31	89.66	89.74
# Units	602	603	592	564	569	562	550	443	561

If the number of units or hospitals is less than five, comparison data are suppressed to maintain confidentiality. If the number of units or hospitals is less than 20, comparison data may vary substantially over the time period and should be used with caution. For additional information, please refer to NDNQI reference documents.

Phelps Memorial Hospital

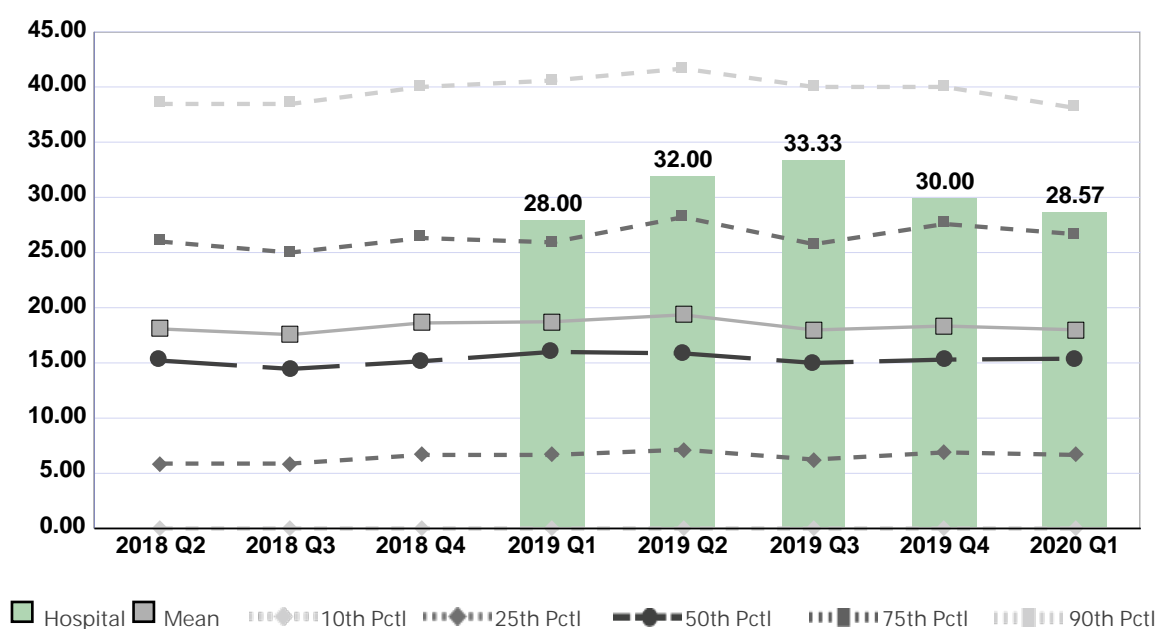
Compared by: All Hospitals

Peer Group: All Hospitals

Unit Type: Adult Surgical

Unit: Surgery -3 North

Measure: Percent of Direct Care RNs with Specialty Nursing Certification



Quarter	2018 Q2	2018 Q3	2018 Q4	2019 Q1	2019 Q2	2019 Q3	2019 Q4	2020 Q1	Average
Unit	No Data	No Data	No Data	28.00	32.00	33.33	30.00	28.57	30.38
Mean	18.08	17.57	18.62	18.73	19.36	17.99	18.34	18.00	18.34
Standard Deviation	15.51	15.22	15.79	15.71	16.62	15.28	14.89	14.55	15.44
10th Percentile	0.00	0.00	0.00	0.00	0.00	0.00	0.00	0.00	0.00
25th Percentile	5.88	5.88	6.67	6.67	7.14	6.25	6.90	6.67	6.51
50th Percentile (Median)	15.22	14.46	15.15	16.00	15.87	15.00	15.30	15.38	15.30
75th Percentile	26.00	25.00	26.32	25.93	28.21	25.76	27.59	26.67	26.43
90th Percentile	38.46	38.46	40.00	40.58	41.67	40.00	40.00	38.10	39.66
# Units	591	588	579	550	546	540	538	429	545

If the number of units or hospitals is less than five, comparison data are suppressed to maintain confidentiality. If the number of units or hospitals is less than 20, comparison data may vary substantially over the time period and should be used with caution. For additional information, please refer to NDNQI reference documents.

Phelps Memorial Hospital

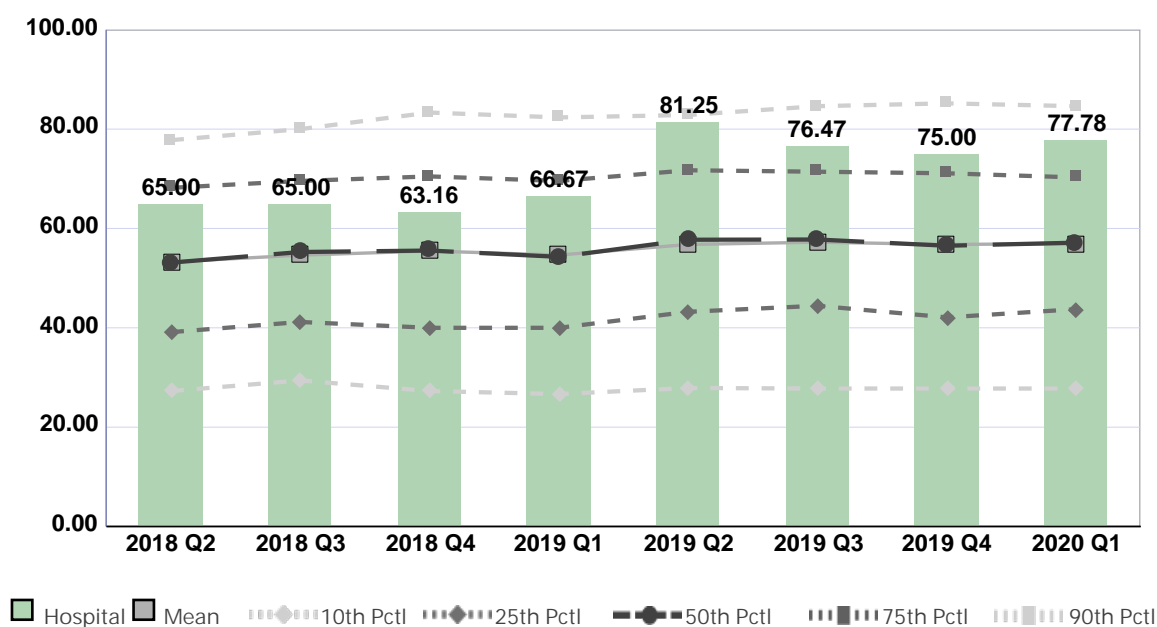
Compared by: All Hospitals

Peer Group: All Hospitals

Unit Type: Adult Psychiatric

Unit: 1S

Measure: Percent of Direct Care RNs with BSN, MSN, or PhD



Quarter	2018 Q2	2018 Q3	2018 Q4	2019 Q1	2019 Q2	2019 Q3	2019 Q4	2020 Q1	Average
Unit	65.00	65.00	63.16	66.67	81.25	76.47	75.00	77.78	71.29
Mean	53.27	54.63	55.46	54.65	56.78	57.24	56.79	56.95	55.72
Standard Deviation	19.95	20.53	21.17	20.76	20.65	20.42	20.47	19.63	20.45
10th Percentile	27.27	29.41	27.27	26.67	27.89	27.78	27.78	27.78	27.73
25th Percentile	39.13	41.18	40.00	40.00	43.22	44.44	42.11	43.75	41.73
50th Percentile (Median)	53.13	55.26	55.56	54.29	57.74	57.78	56.52	57.14	55.93
75th Percentile	68.18	69.57	70.48	69.57	71.71	71.43	71.11	70.27	70.29
90th Percentile	77.78	80.00	83.33	82.35	82.84	84.62	85.19	84.62	82.59
# Units	287	281	288	275	260	263	273	219	268

If the number of units or hospitals is less than five, comparison data are suppressed to maintain confidentiality. If the number of units or hospitals is less than 20, comparison data may vary substantially over the time period and should be used with caution. For additional information, please refer to NDNQI reference documents.

Phelps Memorial Hospital

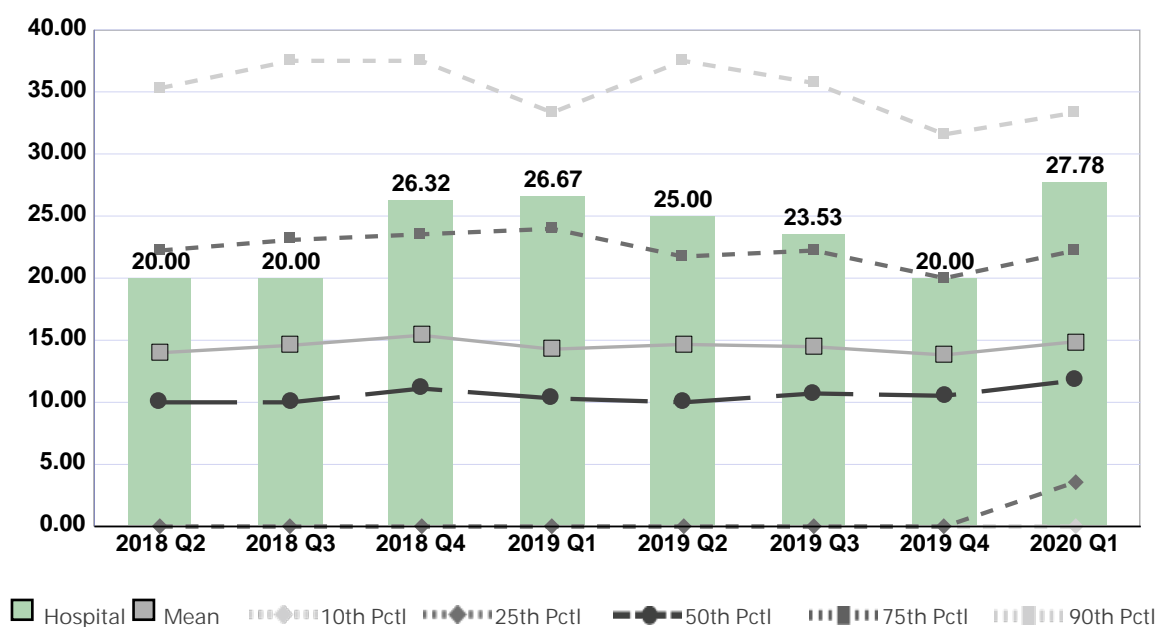
Compared by: All Hospitals

Peer Group: All Hospitals

Unit Type: Adult Psychiatric

Unit: 1S

Measure: Percent of Direct Care RNs with Specialty Nursing Certification



Quarter	2018 Q2	2018 Q3	2018 Q4	2019 Q1	2019 Q2	2019 Q3	2019 Q4	2020 Q1	Average
Unit	20.00	20.00	26.32	26.67	25.00	23.53	20.00	27.78	23.66
Mean	13.99	14.59	15.40	14.28	14.66	14.48	13.81	14.88	14.51
Standard Deviation	15.23	15.52	16.39	15.32	15.97	14.70	14.72	14.89	15.34
10th Percentile	0.00	0.00	0.00	0.00	0.00	0.00	0.00	0.00	0.00
25th Percentile	0.00	0.00	0.00	0.00	0.00	0.00	0.00	3.57	0.45
50th Percentile (Median)	10.00	10.00	11.11	10.32	10.00	10.71	10.53	11.76	10.55
75th Percentile	22.22	23.08	23.53	23.98	21.74	22.22	20.00	22.22	22.37
90th Percentile	35.29	37.50	37.50	33.33	37.50	35.71	31.58	33.33	35.22
# Units	276	269	279	264	239	247	262	205	255

If the number of units or hospitals is less than five, comparison data are suppressed to maintain confidentiality. If the number of units or hospitals is less than 20, comparison data may vary substantially over the time period and should be used with caution. For additional information, please refer to NDNQI reference documents.

Phelps Memorial Hospital

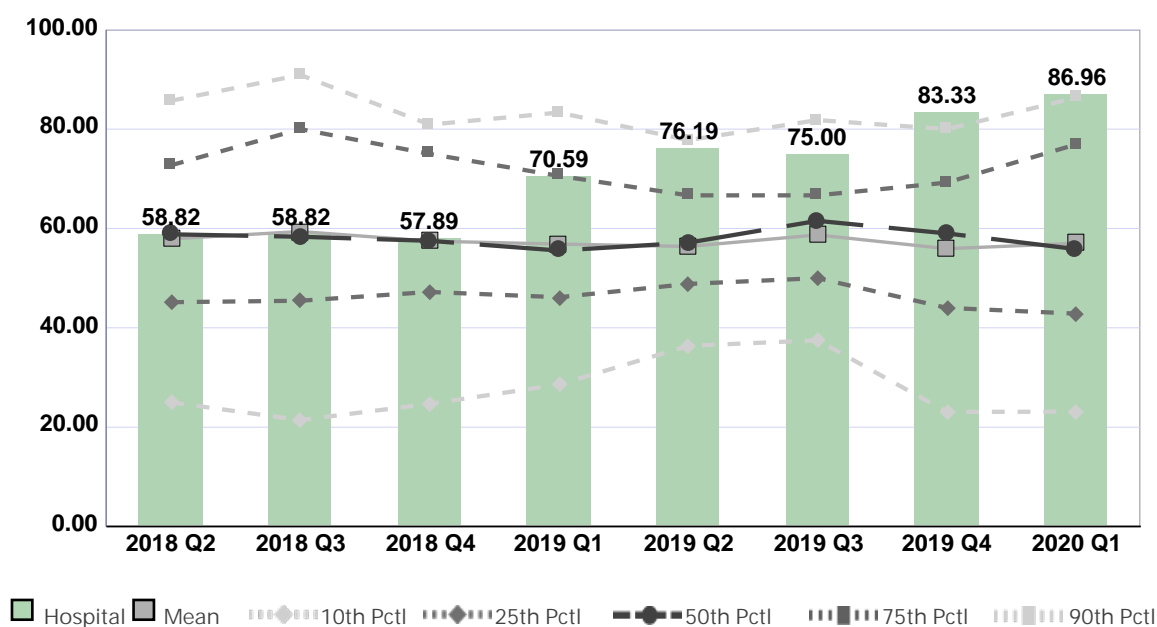
Compared by: All Hospitals

Peer Group: All Hospitals

Unit Type: Behavioral Health

Unit: Behavioral Health

Measure: Percent of Direct Care RNs with BSN, MSN, or PhD



Quarter	2018 Q2	2018 Q3	2018 Q4	2019 Q1	2019 Q2	2019 Q3	2019 Q4	2020 Q1	Average
Unit	58.82	58.82	57.89	70.59	76.19	75.00	83.33	86.96	70.95
Mean	57.91	59.39	57.45	56.85	56.38	58.70	55.93	57.01	57.45
Standard Deviation	22.03	22.89	20.21	19.89	17.34	18.67	20.49	23.58	20.64
10th Percentile	25.00	21.43	24.70	28.57	36.36	37.50	23.08	23.11	27.47
25th Percentile	45.16	45.45	47.22	46.15	48.84	50.00	44.02	42.86	46.21
50th Percentile (Median)	58.82	58.33	57.52	55.56	57.14	61.54	59.01	55.84	57.97
75th Percentile	72.73	80.00	75.00	70.59	66.67	66.67	69.23	76.92	72.23
90th Percentile	85.71	90.91	80.91	83.33	77.78	81.82	80.00	86.34	83.35
# Units	39	39	40	35	33	37	36	30	36

If the number of units or hospitals is less than five, comparison data are suppressed to maintain confidentiality. If the number of units or hospitals is less than 20, comparison data may vary substantially over the time period and should be used with caution. For additional information, please refer to NDNQI reference documents.

Phelps Memorial Hospital

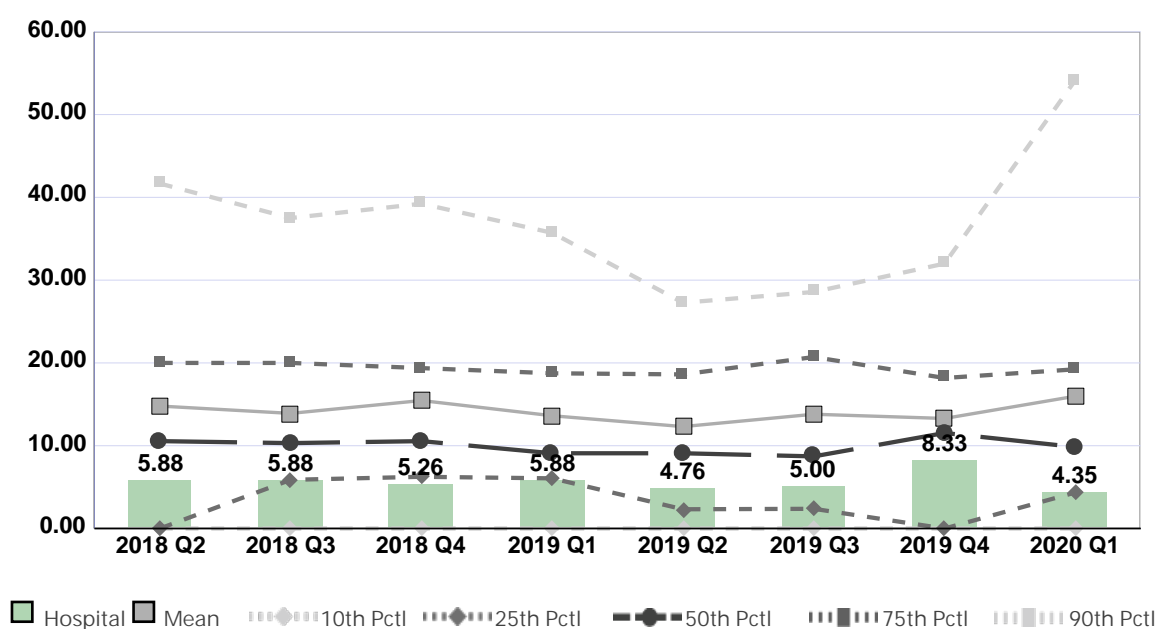
Compared by: All Hospitals

Peer Group: All Hospitals

Unit Type: Behavioral Health

Unit: Behavioral Health

Measure: Percent of Direct Care RNs with Specialty Nursing Certification



Quarter	2018 Q2	2018 Q3	2018 Q4	2019 Q1	2019 Q2	2019 Q3	2019 Q4	2020 Q1	Average
Unit	5.88	5.88	5.26	5.88	4.76	5.00	8.33	4.35	5.67
Mean	14.79	13.90	15.46	13.62	12.31	13.81	13.29	15.98	14.15
Standard Deviation	16.73	13.25	14.36	11.93	11.35	14.21	12.95	18.86	14.20
10th Percentile	0.00	0.00	0.00	0.00	0.00	0.00	0.00	0.00	0.00
25th Percentile	0.00	5.88	6.25	6.06	2.33	2.38	0.00	4.35	3.41
50th Percentile (Median)	10.56	10.32	10.56	9.09	9.09	8.71	11.54	9.85	9.96
75th Percentile	20.00	20.00	19.38	18.75	18.61	20.71	18.18	19.23	19.36
90th Percentile	41.67	37.50	39.23	35.71	27.27	28.57	32.00	54.17	37.02
# Units	38	38	40	35	32	36	35	30	36

If the number of units or hospitals is less than five, comparison data are suppressed to maintain confidentiality. If the number of units or hospitals is less than 20, comparison data may vary substantially over the time period and should be used with caution. For additional information, please refer to NDNQI reference documents.

Phelps Memorial Hospital

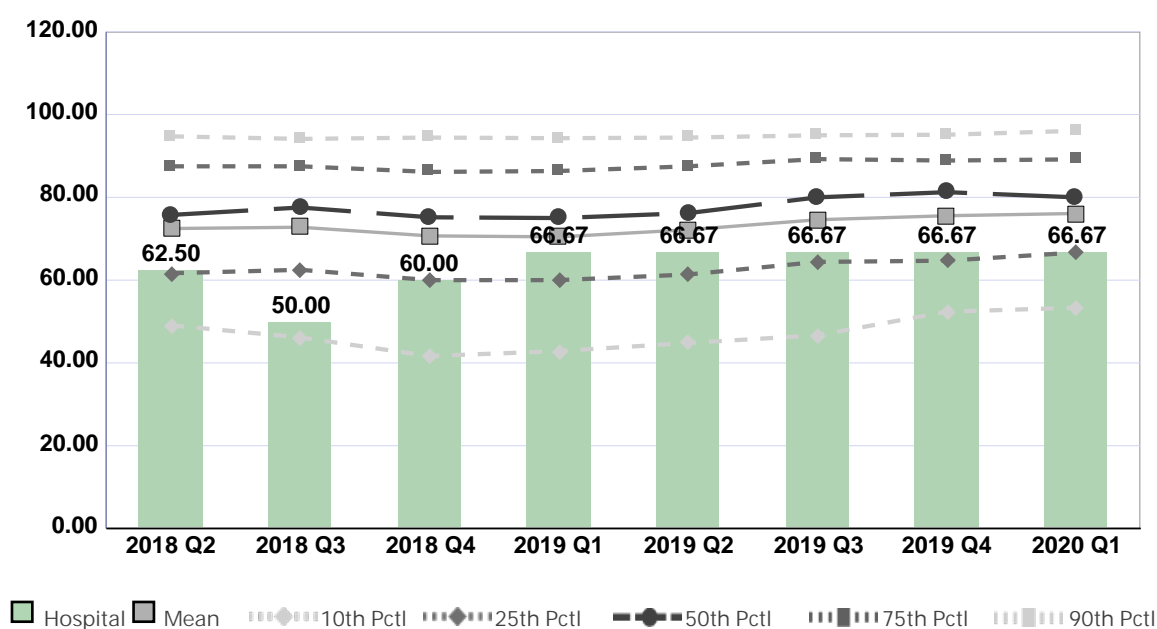
Compared by: All Hospitals

Peer Group: All Hospitals

Unit Type: Pediatric Med-Surg Combined

Unit: Peds

Measure: Percent of Direct Care RNs with BSN, MSN, or PhD



Quarter	2018 Q2	2018 Q3	2018 Q4	2019 Q1	2019 Q2	2019 Q3	2019 Q4	2020 Q1	Average
Unit	62.50	50.00	60.00	66.67	66.67	66.67	66.67	66.67	63.23
Mean	72.47	72.78	70.69	70.45	72.17	74.59	75.56	76.10	73.10
Standard Deviation	19.32	19.59	21.58	21.74	20.52	19.52	18.42	18.08	19.85
10th Percentile	49.09	46.15	41.67	42.86	44.83	46.67	52.38	53.33	47.12
25th Percentile	61.67	62.50	60.00	60.00	61.36	64.40	64.71	66.67	62.66
50th Percentile (Median)	75.76	77.55	75.18	75.00	76.19	80.00	81.25	80.00	77.62
75th Percentile	87.50	87.50	86.14	86.36	87.50	89.24	88.89	89.18	87.79
90th Percentile	94.74	94.12	94.44	94.29	94.44	95.00	95.12	96.08	94.78
# Units	209	201	204	197	193	184	191	164	193

If the number of units or hospitals is less than five, comparison data are suppressed to maintain confidentiality. If the number of units or hospitals is less than 20, comparison data may vary substantially over the time period and should be used with caution. For additional information, please refer to NDNQI reference documents.

Phelps Memorial Hospital

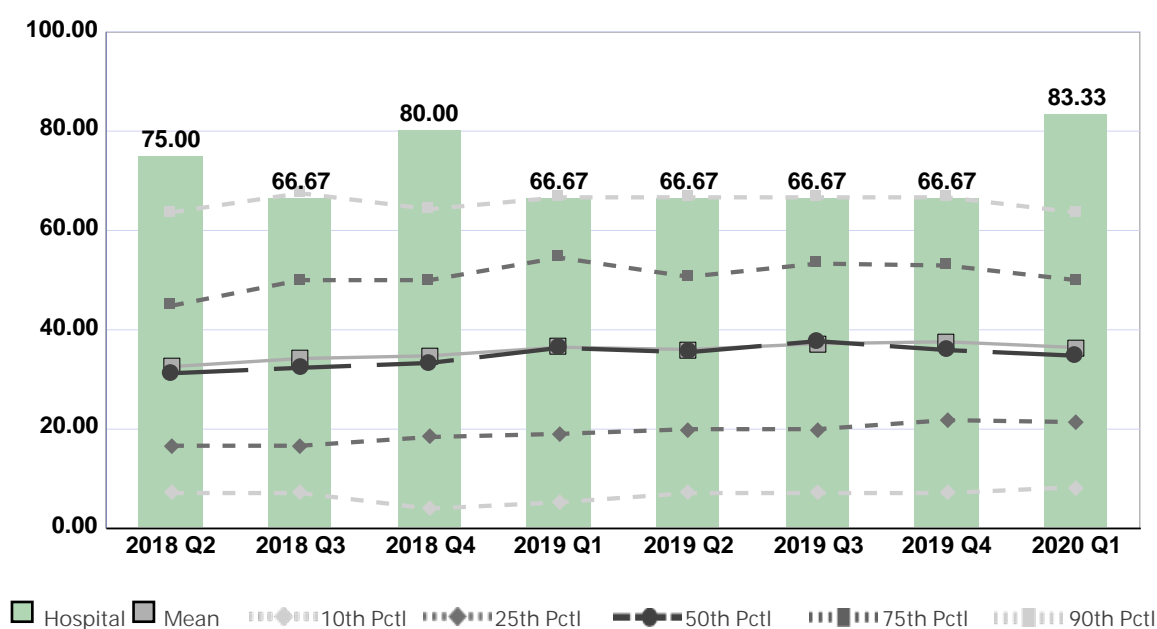
Compared by: All Hospitals

Peer Group: All Hospitals

Unit Type: Pediatric Med-Surg Combined

Unit: Peds

Measure: Percent of Direct Care RNs with Specialty Nursing Certification



Quarter	2018 Q2	2018 Q3	2018 Q4	2019 Q1	2019 Q2	2019 Q3	2019 Q4	2020 Q1	Average
Unit	75.00	66.67	80.00	66.67	66.67	66.67	66.67	83.33	71.46
Mean	32.59	34.22	34.77	36.50	36.04	37.21	37.60	36.44	35.67
Standard Deviation	21.66	22.74	22.09	22.57	22.15	22.09	22.21	20.95	22.06
10th Percentile	7.14	7.14	4.00	5.26	7.14	7.14	7.14	8.33	6.66
25th Percentile	16.67	16.67	18.42	19.05	20.00	20.00	21.83	21.43	19.26
50th Percentile (Median)	31.25	32.35	33.33	36.36	35.49	37.72	35.92	34.78	34.65
75th Percentile	44.83	50.00	50.00	54.55	50.68	53.33	52.94	50.00	50.79
90th Percentile	63.64	67.50	64.29	66.67	66.67	66.67	66.67	63.64	65.72
# Units	207	197	202	193	186	180	188	161	189

If the number of units or hospitals is less than five, comparison data are suppressed to maintain confidentiality. If the number of units or hospitals is less than 20, comparison data may vary substantially over the time period and should be used with caution. For additional information, please refer to NDNQI reference documents.

Phelps Memorial Hospital

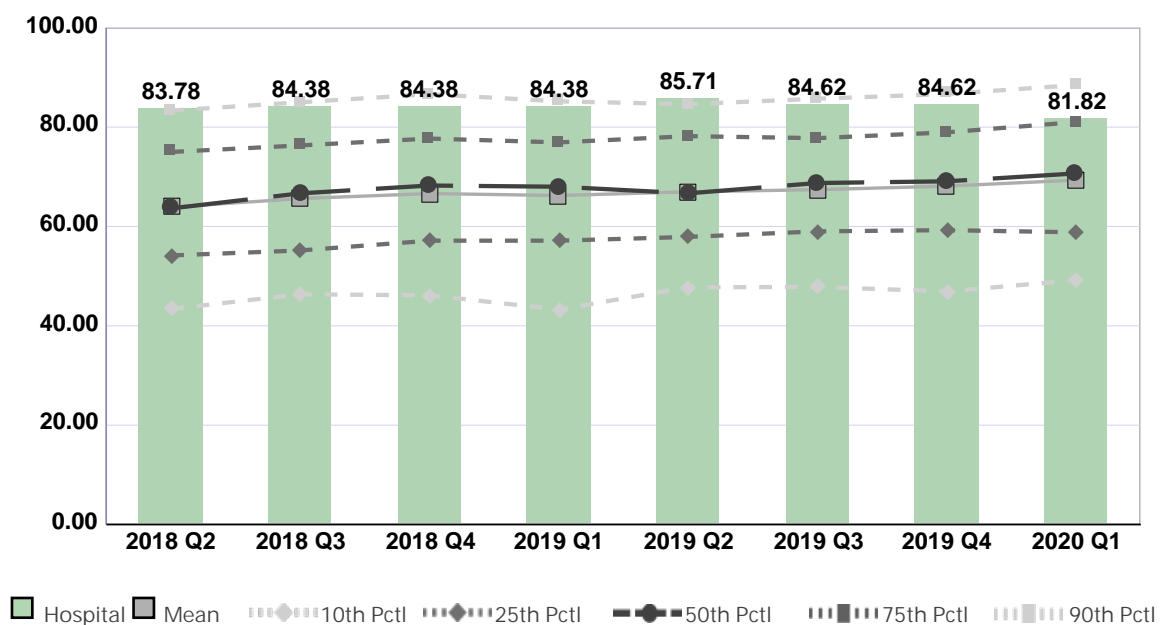
Compared by: All Hospitals

Peer Group: All Hospitals

Unit Type: Mother/Baby

Unit: Well Baby and Postpartum

Measure: Percent of Direct Care RNs with BSN, MSN, or PhD



Quarter	2018 Q2	2018 Q3	2018 Q4	2019 Q1	2019 Q2	2019 Q3	2019 Q4	2020 Q1	Average
Unit	83.78	84.38	84.38	84.38	85.71	84.62	84.62	81.82	84.21
Mean	63.89	65.62	66.62	66.23	66.98	67.41	68.12	69.34	66.78
Standard Deviation	16.04	15.26	16.20	16.04	15.53	15.38	15.32	16.48	15.78
10th Percentile	43.40	46.34	46.14	43.28	47.76	47.83	46.94	49.18	46.36
25th Percentile	54.17	55.17	57.14	57.14	57.89	59.02	59.26	58.82	57.33
50th Percentile (Median)	63.64	66.67	68.25	68.00	66.67	68.75	69.09	70.68	67.72
75th Percentile	75.00	76.32	77.69	76.92	78.18	77.78	78.95	81.02	77.73
90th Percentile	83.33	85.00	86.63	85.19	84.62	85.71	86.67	88.46	85.70
# Units	241	235	240	237	221	234	237	192	230

If the number of units or hospitals is less than five, comparison data are suppressed to maintain confidentiality. If the number of units or hospitals is less than 20, comparison data may vary substantially over the time period and should be used with caution. For additional information, please refer to NDNQI reference documents.

Phelps Memorial Hospital

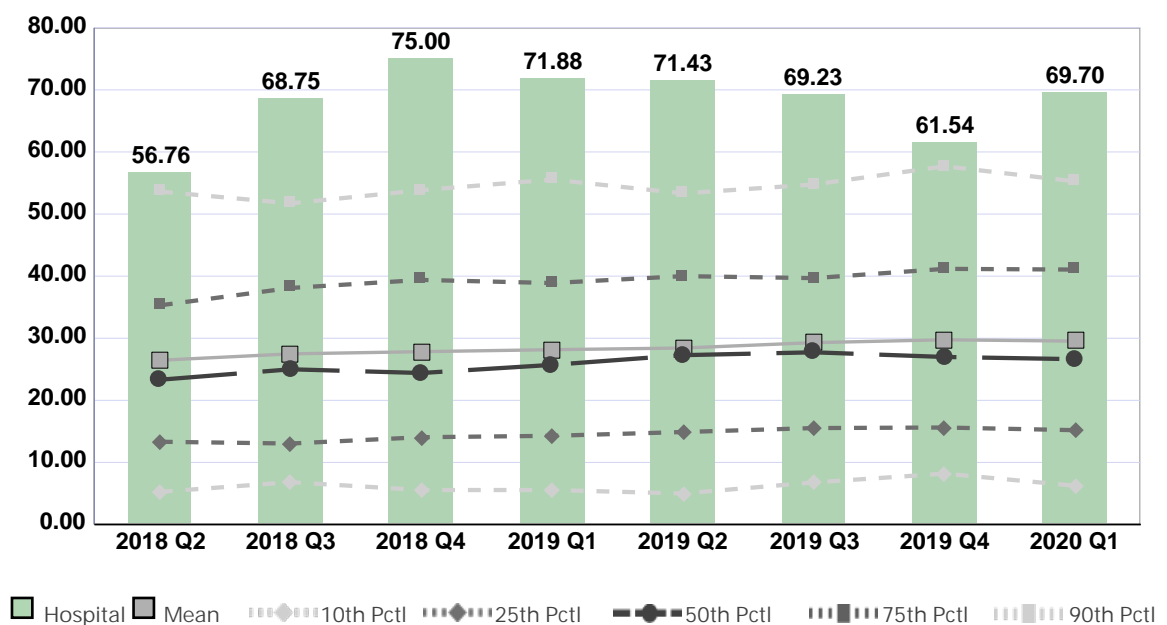
Compared by: All Hospitals

Peer Group: All Hospitals

Unit Type: Mother/Baby

Unit: Well Baby and Postpartum

Measure: Percent of Direct Care RNs with Specialty Nursing Certification



Quarter	2018 Q2	2018 Q3	2018 Q4	2019 Q1	2019 Q2	2019 Q3	2019 Q4	2020 Q1	Average
Unit	56.76	68.75	75.00	71.88	71.43	69.23	61.54	69.70	68.03
Mean	26.46	27.48	27.84	28.16	28.42	29.29	29.75	29.53	28.37
Standard Deviation	18.35	18.83	18.52	18.47	18.34	18.81	19.19	19.31	18.73
10th Percentile	5.26	6.82	5.56	5.56	5.00	6.78	8.20	6.25	6.18
25th Percentile	13.33	13.04	14.06	14.29	14.89	15.54	15.63	15.19	14.50
50th Percentile (Median)	23.32	25.00	24.40	25.71	27.27	27.74	26.98	26.63	25.88
75th Percentile	35.29	38.10	39.39	38.89	40.00	39.68	41.18	41.06	39.20
90th Percentile	53.62	51.72	53.85	55.56	53.33	54.76	57.69	55.26	54.47
# Units	239	233	238	235	219	232	235	188	227

If the number of units or hospitals is less than five, comparison data are suppressed to maintain confidentiality. If the number of units or hospitals is less than 20, comparison data may vary substantially over the time period and should be used with caution. For additional information, please refer to NDNQI reference documents.

Phelps Memorial Hospital

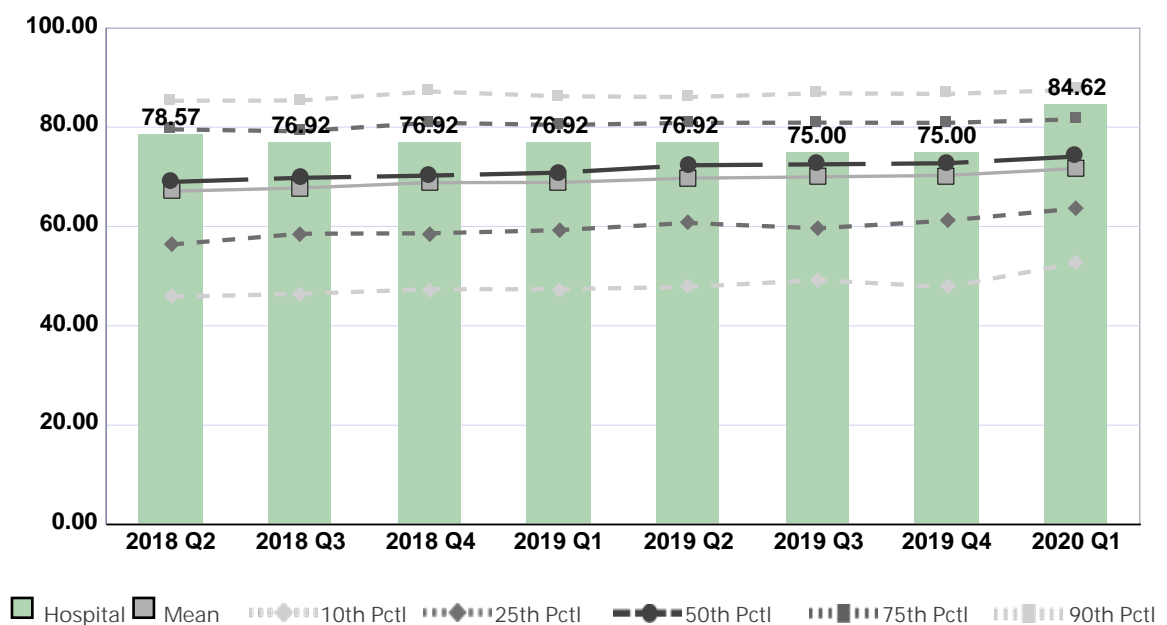
Compared by: All Hospitals

Peer Group: All Hospitals

Unit Type: Labor and Delivery

Unit: Labor and Delivery

Measure: Percent of Direct Care RNs with BSN, MSN, or PhD



Quarter	2018 Q2	2018 Q3	2018 Q4	2019 Q1	2019 Q2	2019 Q3	2019 Q4	2020 Q1	Average
Unit	78.57	76.92	76.92	76.92	76.92	75.00	75.00	84.62	77.61
Mean	67.10	67.73	68.83	68.87	69.71	69.98	70.28	71.66	69.27
Standard Deviation	15.67	15.26	15.29	15.69	15.18	14.79	15.45	14.56	15.24
10th Percentile	45.83	46.43	47.37	47.37	47.83	49.19	47.83	52.63	48.06
25th Percentile	56.36	58.54	58.62	59.26	60.71	59.63	61.17	63.64	59.74
50th Percentile (Median)	68.97	69.79	70.24	70.83	72.32	72.50	72.73	74.07	71.43
75th Percentile	79.55	79.16	80.88	80.43	80.85	80.90	80.85	81.58	80.53
90th Percentile	85.29	85.37	87.18	86.21	86.05	86.83	86.67	87.50	86.39
# Units	255	248	255	245	234	240	247	195	240

If the number of units or hospitals is less than five, comparison data are suppressed to maintain confidentiality. If the number of units or hospitals is less than 20, comparison data may vary substantially over the time period and should be used with caution. For additional information, please refer to NDNQI reference documents.

Phelps Memorial Hospital

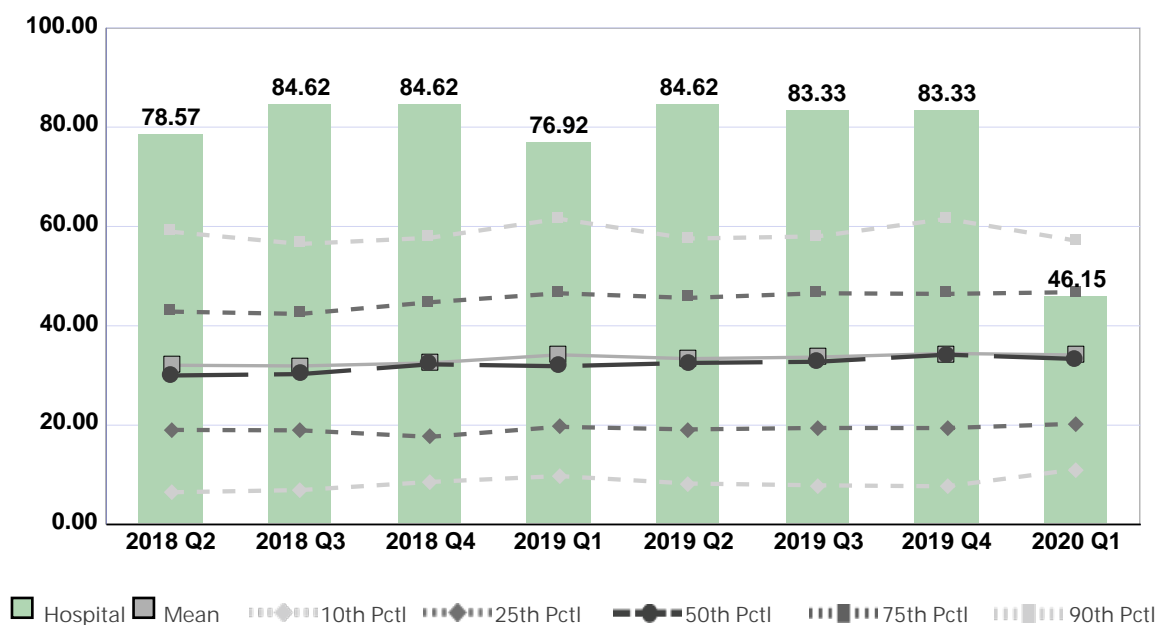
Compared by: All Hospitals

Peer Group: All Hospitals

Unit Type: Labor and Delivery

Unit: Labor and Delivery

Measure: Percent of Direct Care RNs with Specialty Nursing Certification



Quarter	2018 Q2	2018 Q3	2018 Q4	2019 Q1	2019 Q2	2019 Q3	2019 Q4	2020 Q1	Average
Unit	78.57	84.62	84.62	76.92	84.62	83.33	83.33	46.15	77.77
Mean	32.07	31.92	32.53	34.16	33.39	33.70	34.44	34.13	33.29
Standard Deviation	19.30	19.73	19.58	19.58	19.46	19.54	19.53	17.68	19.30
10th Percentile	6.49	6.94	8.57	9.76	8.26	7.89	7.69	11.11	8.34
25th Percentile	19.05	18.96	17.65	19.67	19.15	19.44	19.42	20.29	19.20
50th Percentile (Median)	30.00	30.28	32.25	31.87	32.53	32.77	34.19	33.33	32.15
75th Percentile	42.86	42.40	44.74	46.55	45.61	46.55	46.43	46.77	45.24
90th Percentile	58.95	56.48	57.71	61.54	57.58	58.00	61.54	57.14	58.62
# Units	249	240	250	237	226	232	241	187	233

If the number of units or hospitals is less than five, comparison data are suppressed to maintain confidentiality. If the number of units or hospitals is less than 20, comparison data may vary substantially over the time period and should be used with caution. For additional information, please refer to NDNQI reference documents.

Phelps Memorial Hospital

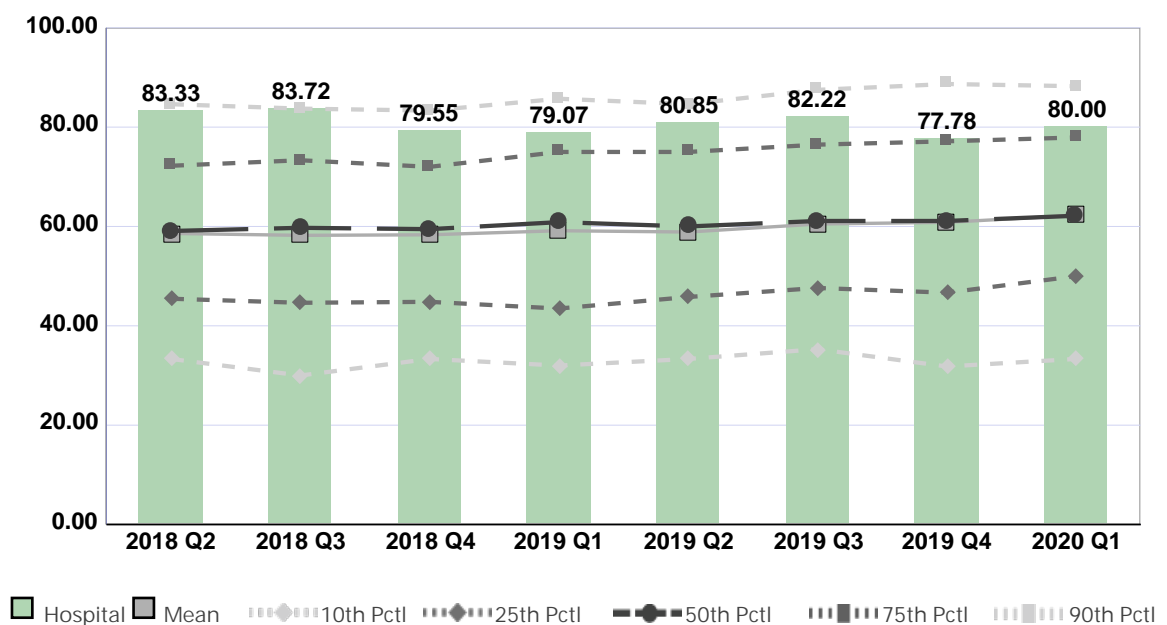
Compared by: All Hospitals

Peer Group: All Hospitals

Unit Type: ED-10,000-29,999 Annual Visits

Unit: ER

Measure: Percent of Direct Care RNs with BSN, MSN, or PhD



Quarter	2018 Q2	2018 Q3	2018 Q4	2019 Q1	2019 Q2	2019 Q3	2019 Q4	2020 Q1	Average
Unit	83.33	83.72	79.55	79.07	80.85	82.22	77.78	80.00	80.82
Mean	58.60	58.22	58.32	59.15	58.88	60.50	60.83	62.25	59.59
Standard Deviation	19.27	19.96	20.34	21.58	21.40	20.93	20.93	20.79	20.65
10th Percentile	33.33	30.00	33.33	32.00	33.33	35.29	31.82	33.33	32.81
25th Percentile	45.45	44.64	44.83	43.48	45.80	47.62	46.67	50.00	46.06
50th Percentile (Median)	59.09	59.73	59.46	60.87	60.00	61.11	61.11	62.16	60.44
75th Percentile	72.22	73.33	72.00	75.00	75.00	76.47	77.14	77.92	74.89
90th Percentile	84.62	83.72	83.33	85.71	84.62	87.50	88.68	88.24	85.80
# Units	223	208	217	219	204	211	205	169	207

If the number of units or hospitals is less than five, comparison data are suppressed to maintain confidentiality. If the number of units or hospitals is less than 20, comparison data may vary substantially over the time period and should be used with caution. For additional information, please refer to NDNQI reference documents.

Phelps Memorial Hospital

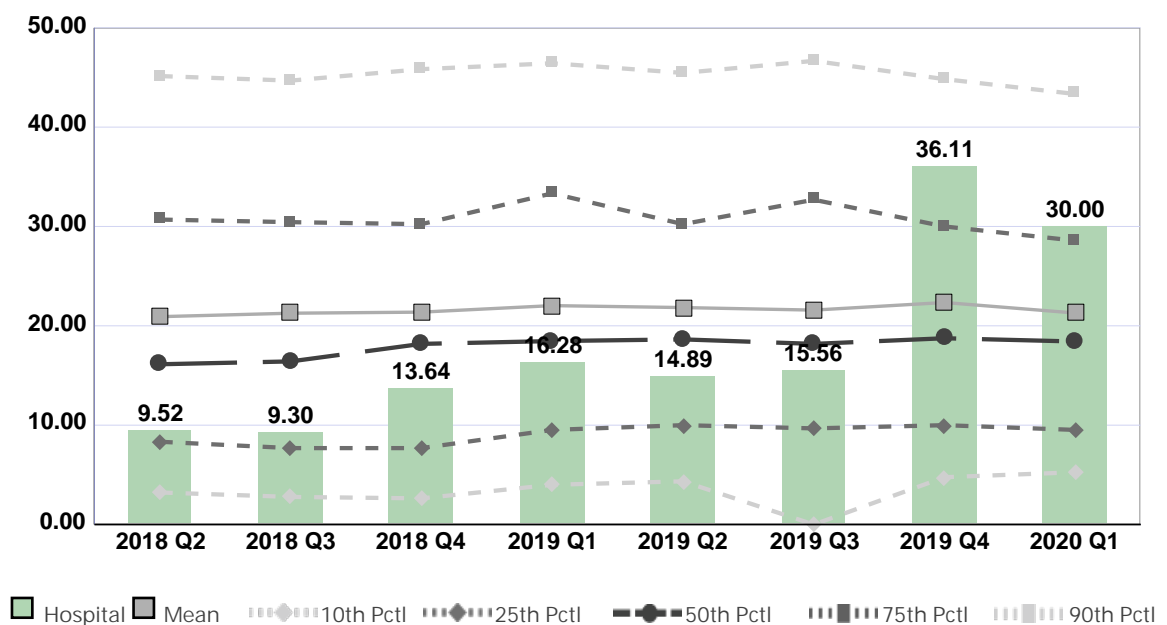
Compared by: All Hospitals

Peer Group: All Hospitals

Unit Type: ED-10,000-29,999 Annual Visits

Unit: ER

Measure: Percent of Direct Care RNs with Specialty Nursing Certification



Quarter	2018 Q2	2018 Q3	2018 Q4	2019 Q1	2019 Q2	2019 Q3	2019 Q4	2020 Q1	Average
Unit	9.52	9.30	13.64	16.28	14.89	15.56	36.11	30.00	18.16
Mean	20.92	21.27	21.38	22.04	21.84	21.58	22.35	21.29	21.58
Standard Deviation	17.10	17.50	17.12	16.81	15.86	16.94	17.38	14.41	16.64
10th Percentile	3.23	2.78	2.63	4.00	4.35	0.00	4.76	5.26	3.38
25th Percentile	8.33	7.69	7.69	9.52	10.00	9.68	10.00	9.52	9.06
50th Percentile (Median)	16.13	16.42	18.18	18.47	18.63	18.18	18.75	18.42	17.90
75th Percentile	30.69	30.43	30.23	33.33	30.23	32.69	30.00	28.57	30.77
90th Percentile	45.14	44.68	45.83	46.43	45.45	46.67	44.83	43.33	45.30
# Units	220	203	213	214	198	203	201	163	202

If the number of units or hospitals is less than five, comparison data are suppressed to maintain confidentiality. If the number of units or hospitals is less than 20, comparison data may vary substantially over the time period and should be used with caution. For additional information, please refer to NDNQI reference documents.

Phelps Memorial Hospital

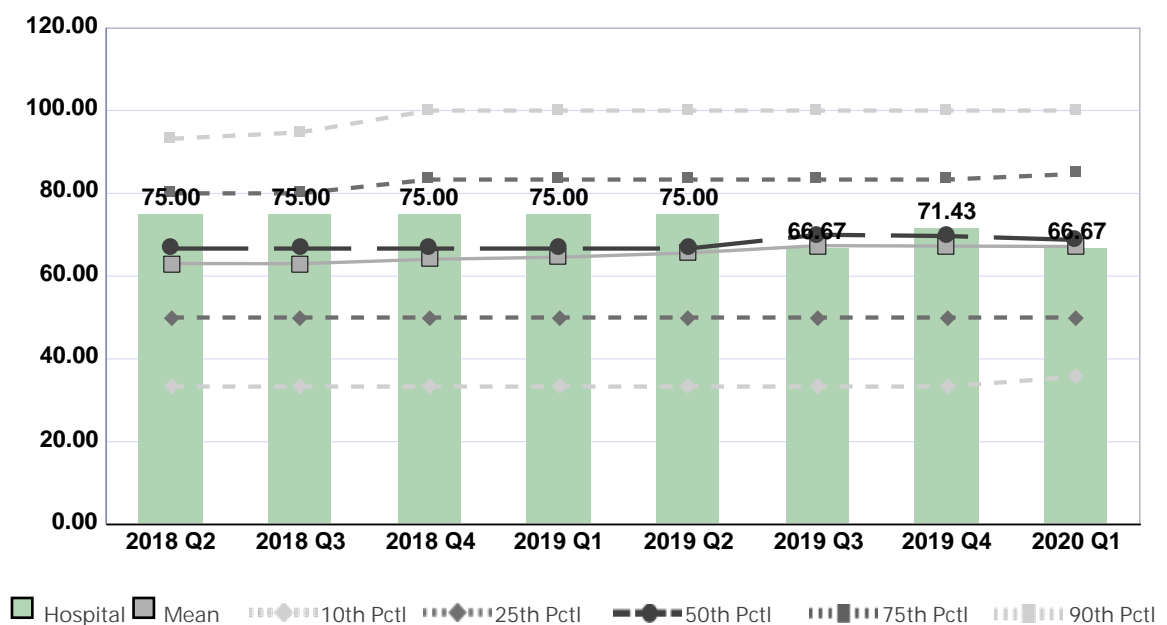
Compared by: All Hospitals

Peer Group: All Hospitals

Unit Type: Interventional Cardiology/Radiology

Unit: Interventional Radiology

Measure: Percent of Direct Care RNs with BSN, MSN, or PhD



Quarter	2018 Q2	2018 Q3	2018 Q4	2019 Q1	2019 Q2	2019 Q3	2019 Q4	2020 Q1	Average
Unit	75.00	75.00	75.00	75.00	75.00	66.67	71.43	66.67	72.47
Mean	63.05	63.01	64.07	64.58	65.60	67.36	67.27	67.16	65.26
Standard Deviation	24.01	24.55	24.46	25.28	24.20	23.67	23.67	23.58	24.18
10th Percentile	33.33	33.33	33.33	33.33	33.33	33.33	33.33	35.71	33.63
25th Percentile	50.00	50.00	50.00	50.00	50.00	50.00	50.00	50.00	50.00
50th Percentile (Median)	66.67	66.67	66.67	66.67	66.67	70.00	69.70	68.75	67.72
75th Percentile	80.00	80.00	83.33	83.33	83.33	83.33	83.33	84.70	82.67
90th Percentile	93.18	94.74	100.00	100.00	100.00	100.00	100.00	100.00	98.49
# Units	469	461	477	463	462	478	477	412	462

If the number of units or hospitals is less than five, comparison data are suppressed to maintain confidentiality. If the number of units or hospitals is less than 20, comparison data may vary substantially over the time period and should be used with caution. For additional information, please refer to NDNQI reference documents.

Phelps Memorial Hospital

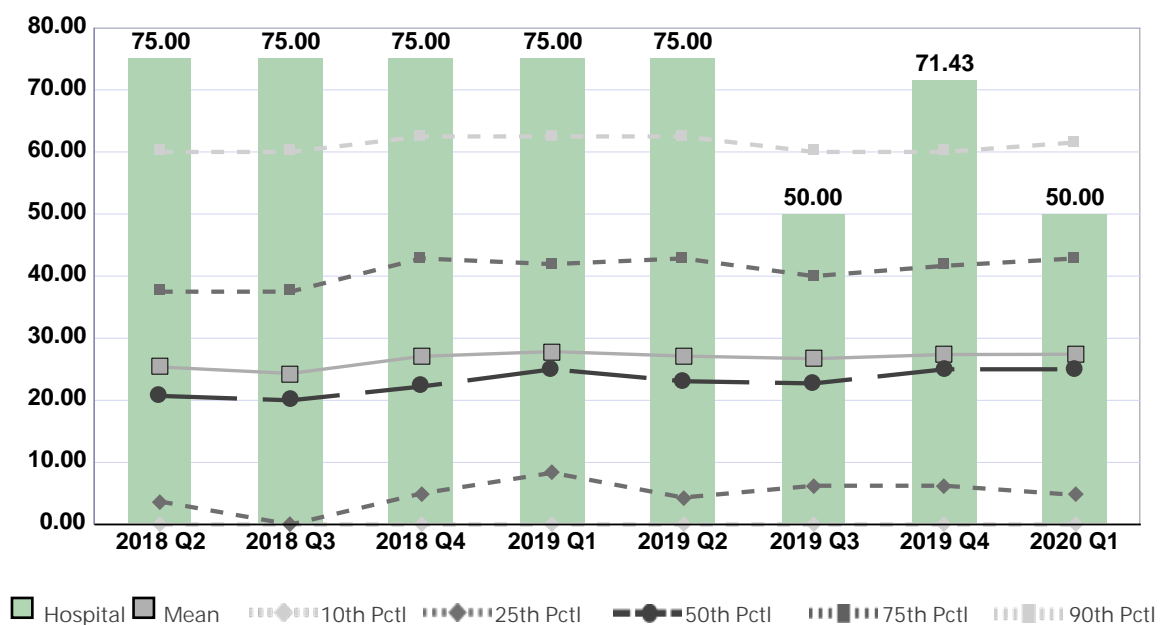
Compared by: All Hospitals

Peer Group: All Hospitals

Unit Type: Interventional Cardiology/Radiology

Unit: Interventional Radiology

Measure: Percent of Direct Care RNs with Specialty Nursing Certification



Quarter	2018 Q2	2018 Q3	2018 Q4	2019 Q1	2019 Q2	2019 Q3	2019 Q4	2020 Q1	Average
Unit	75.00	75.00	75.00	75.00	75.00	50.00	71.43	50.00	68.30
Mean	25.37	24.33	27.09	27.85	27.13	26.70	27.37	27.42	26.66
Standard Deviation	23.66	22.41	24.55	24.34	24.74	23.93	24.03	24.26	23.99
10th Percentile	0.00	0.00	0.00	0.00	0.00	0.00	0.00	0.00	0.00
25th Percentile	3.71	0.00	5.00	8.33	4.35	6.25	6.25	4.76	4.83
50th Percentile (Median)	20.71	20.00	22.22	25.00	23.08	22.73	25.00	25.00	22.97
75th Percentile	37.50	37.50	42.86	41.94	42.86	40.00	41.67	42.86	40.90
90th Percentile	60.00	60.00	62.50	62.50	62.50	60.00	60.00	61.54	61.13
# Units	464	451	471	451	449	469	473	406	454

If the number of units or hospitals is less than five, comparison data are suppressed to maintain confidentiality. If the number of units or hospitals is less than 20, comparison data may vary substantially over the time period and should be used with caution. For additional information, please refer to NDNQI reference documents.

Phelps Memorial Hospital

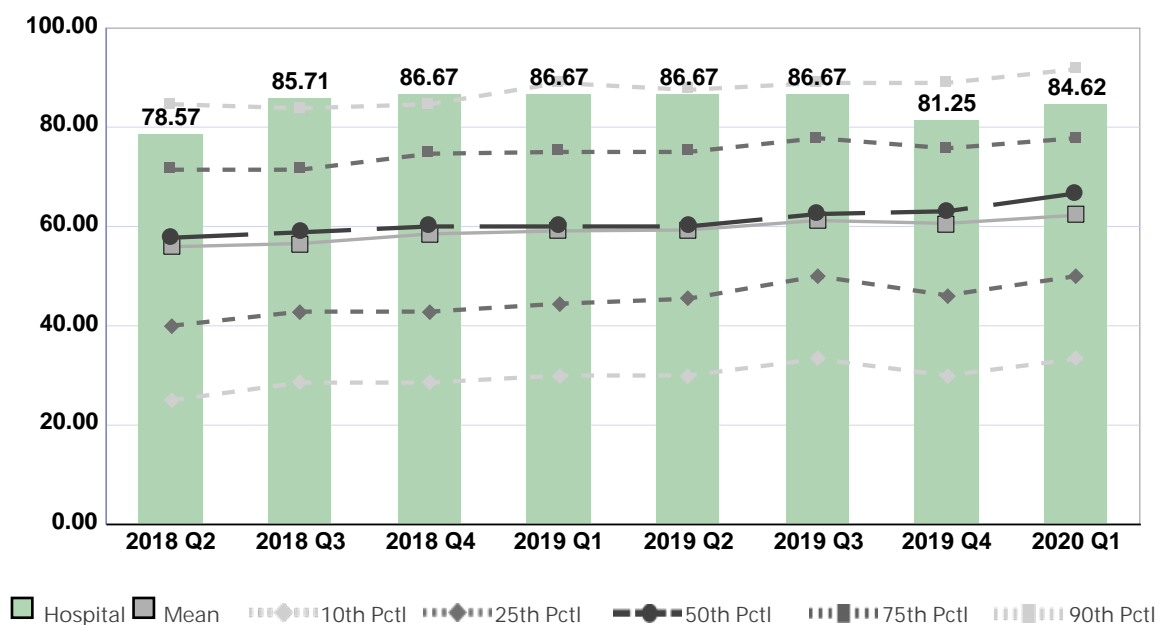
Compared by: All Hospitals

Peer Group: All Hospitals

Unit Type: Endoscopy

Unit: Endoscopy

Measure: Percent of Direct Care RNs with BSN, MSN, or PhD



Quarter	2018 Q2	2018 Q3	2018 Q4	2019 Q1	2019 Q2	2019 Q3	2019 Q4	2020 Q1	Average
Unit	78.57	85.71	86.67	86.67	86.67	86.67	81.25	84.62	84.60
Mean	55.92	56.56	58.50	59.11	59.30	61.20	60.62	62.27	59.18
Standard Deviation	22.94	22.05	22.05	22.64	22.68	22.11	22.79	22.86	22.52
10th Percentile	25.00	28.57	28.57	30.00	30.00	33.33	30.00	33.33	29.85
25th Percentile	40.00	42.86	42.86	44.44	45.45	50.00	46.15	50.00	45.22
50th Percentile (Median)	57.74	58.82	60.00	60.00	60.00	62.50	63.06	66.67	61.10
75th Percentile	71.43	71.43	74.64	75.00	75.00	77.78	75.74	77.78	74.85
90th Percentile	84.62	83.78	84.62	88.89	87.50	88.89	88.89	91.67	87.36
# Units	306	304	312	303	305	311	304	266	301

If the number of units or hospitals is less than five, comparison data are suppressed to maintain confidentiality. If the number of units or hospitals is less than 20, comparison data may vary substantially over the time period and should be used with caution. For additional information, please refer to NDNQI reference documents.

Phelps Memorial Hospital

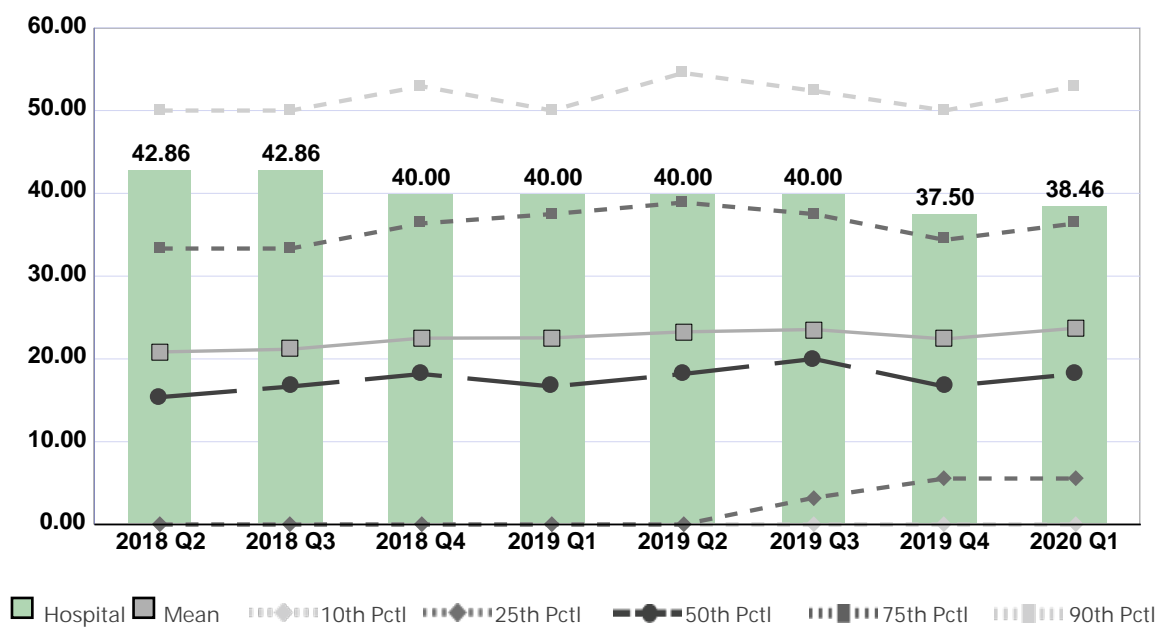
Compared by: All Hospitals

Peer Group: All Hospitals

Unit Type: Endoscopy

Unit: Endoscopy

Measure: Percent of Direct Care RNs with Specialty Nursing Certification



Quarter	2018 Q2	2018 Q3	2018 Q4	2019 Q1	2019 Q2	2019 Q3	2019 Q4	2020 Q1	Average
Unit	42.86	42.86	40.00	40.00	40.00	40.00	37.50	38.46	40.21
Mean	20.84	21.17	22.51	22.54	23.27	23.56	22.42	23.71	22.50
Standard Deviation	20.27	20.38	22.08	22.36	22.20	22.54	21.51	22.94	21.78
10th Percentile	0.00	0.00	0.00	0.00	0.00	0.00	0.00	0.00	0.00
25th Percentile	0.00	0.00	0.00	0.00	0.00	3.23	5.56	5.56	1.79
50th Percentile (Median)	15.38	16.67	18.18	16.67	18.18	20.00	16.67	18.18	17.49
75th Percentile	33.33	33.33	36.36	37.50	38.89	37.50	34.38	36.36	35.96
90th Percentile	50.00	50.00	52.94	50.00	54.55	52.38	50.00	52.94	51.60
# Units	299	297	306	297	297	303	301	261	295

If the number of units or hospitals is less than five, comparison data are suppressed to maintain confidentiality. If the number of units or hospitals is less than 20, comparison data may vary substantially over the time period and should be used with caution. For additional information, please refer to NDNQI reference documents.

Phelps Memorial Hospital

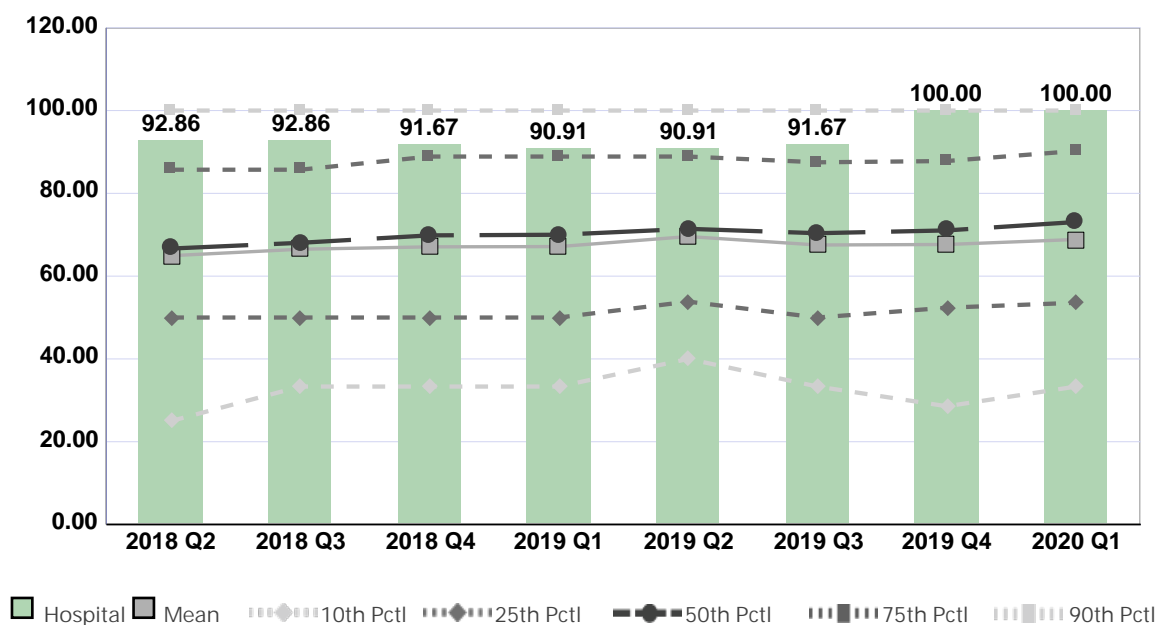
Compared by: All Hospitals

Peer Group: All Hospitals

Unit Type: Cancer Care

Unit: Infusion Unit

Measure: Percent of Direct Care RNs with BSN, MSN, or PhD



Quarter	2018 Q2	2018 Q3	2018 Q4	2019 Q1	2019 Q2	2019 Q3	2019 Q4	2020 Q1	Average
Unit	92.86	92.86	91.67	90.91	90.91	91.67	100.00	100.00	93.86
Mean	64.94	66.50	67.08	67.14	69.57	67.53	67.65	68.86	67.41
Standard Deviation	28.12	26.10	26.90	26.87	24.42	26.56	26.84	26.94	26.59
10th Percentile	25.00	33.33	33.33	33.33	40.00	33.33	28.57	33.33	32.53
25th Percentile	50.00	50.00	50.00	50.00	53.85	50.00	52.38	53.57	51.22
50th Percentile (Median)	66.67	68.05	69.85	70.00	71.43	70.37	71.05	73.08	70.06
75th Percentile	85.71	85.71	88.89	88.89	88.89	87.50	87.80	90.24	87.96
90th Percentile	100.00	100.00	100.00	100.00	100.00	100.00	100.00	100.00	100.00
# Units	435	422	420	389	421	437	443	393	420

If the number of units or hospitals is less than five, comparison data are suppressed to maintain confidentiality. If the number of units or hospitals is less than 20, comparison data may vary substantially over the time period and should be used with caution. For additional information, please refer to NDNQI reference documents.

Phelps Memorial Hospital

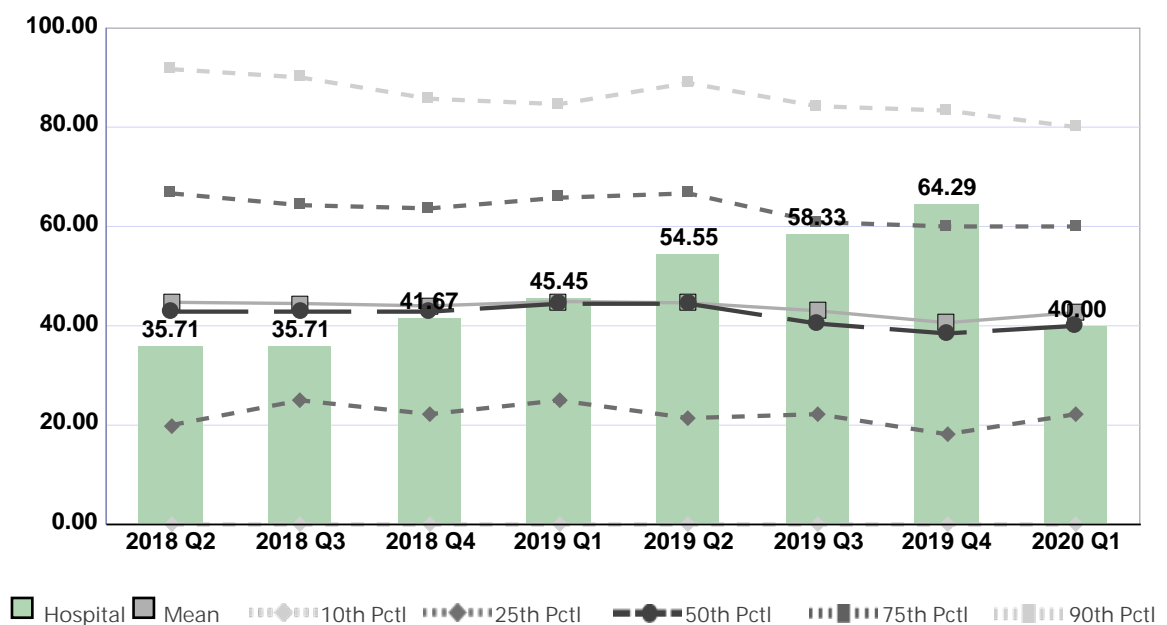
Compared by: All Hospitals

Peer Group: All Hospitals

Unit Type: Cancer Care

Unit: Infusion Unit

Measure: Percent of Direct Care RNs with Specialty Nursing Certification



Quarter	2018 Q2	2018 Q3	2018 Q4	2019 Q1	2019 Q2	2019 Q3	2019 Q4	2020 Q1	Average
Unit	35.71	35.71	41.67	45.45	54.55	58.33	64.29	40.00	46.96
Mean	44.74	44.49	44.01	44.90	44.62	43.03	40.63	42.68	43.64
Standard Deviation	30.99	29.33	29.59	28.56	29.56	29.17	28.86	28.40	29.31
10th Percentile	0.00	0.00	0.00	0.00	0.00	0.00	0.00	0.00	0.00
25th Percentile	20.00	25.00	22.22	25.00	21.43	22.22	18.18	22.22	22.03
50th Percentile (Median)	42.86	42.86	42.86	44.44	44.44	40.45	38.46	40.00	42.05
75th Percentile	66.67	64.29	63.64	65.79	66.67	60.87	60.00	60.00	63.49
90th Percentile	91.67	90.00	85.71	84.62	88.89	84.21	83.33	80.00	86.05
# Units	433	417	417	387	419	412	442	391	415

If the number of units or hospitals is less than five, comparison data are suppressed to maintain confidentiality. If the number of units or hospitals is less than 20, comparison data may vary substantially over the time period and should be used with caution. For additional information, please refer to NDNQI reference documents.

Phelps Memorial Hospital

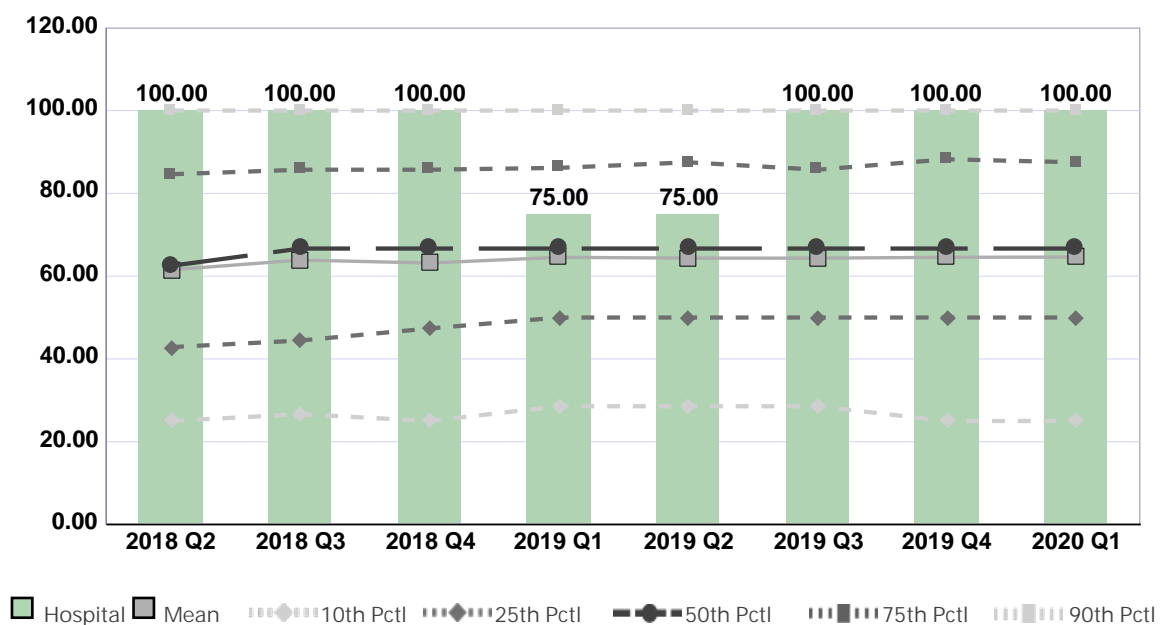
Compared by: All Hospitals

Peer Group: All Hospitals

Unit Type: Procedural Unit

Unit: Pain Management

Measure: Percent of Direct Care RNs with BSN, MSN, or PhD



Quarter	2018 Q2	2018 Q3	2018 Q4	2019 Q1	2019 Q2	2019 Q3	2019 Q4	2020 Q1	Average
Unit	100.00	100.00	100.00	75.00	75.00	100.00	100.00	100.00	93.75
Mean	61.53	63.89	63.17	64.55	64.36	64.35	64.55	64.61	63.88
Standard Deviation	27.68	27.20	27.37	27.20	27.33	26.67	28.01	27.34	27.35
10th Percentile	25.00	26.67	25.00	28.57	28.57	28.57	25.00	25.00	26.55
25th Percentile	42.86	44.44	47.37	50.00	50.00	50.00	50.00	50.00	48.08
50th Percentile (Median)	62.50	66.67	66.67	66.67	66.67	66.67	66.67	66.67	66.15
75th Percentile	84.62	85.71	85.71	86.15	87.50	85.71	88.24	87.50	86.39
90th Percentile	100.00	100.00	100.00	100.00	100.00	100.00	100.00	100.00	100.00
# Units	470	458	481	482	474	505	482	447	475

If the number of units or hospitals is less than five, comparison data are suppressed to maintain confidentiality. If the number of units or hospitals is less than 20, comparison data may vary substantially over the time period and should be used with caution. For additional information, please refer to NDNQI reference documents.

Phelps Memorial Hospital

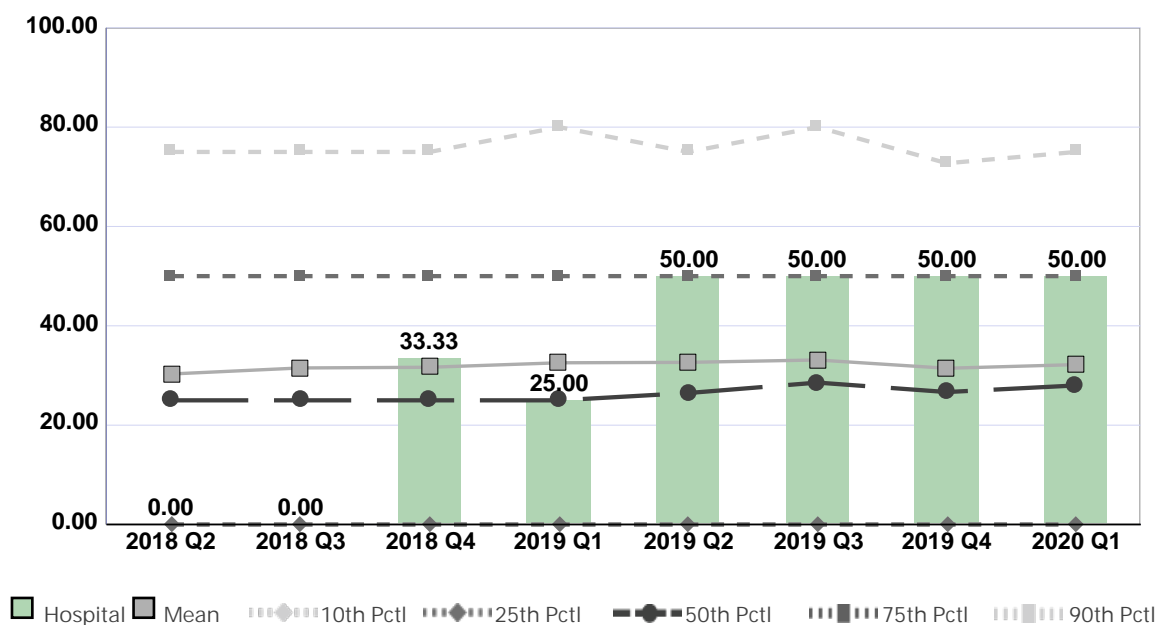
Compared by: All Hospitals

Peer Group: All Hospitals

Unit Type: Procedural Unit

Unit: Pain Management

Measure: Percent of Direct Care RNs with Specialty Nursing Certification



Quarter	2018 Q2	2018 Q3	2018 Q4	2019 Q1	2019 Q2	2019 Q3	2019 Q4	2020 Q1	Average
Unit	0.00	0.00	33.33	25.00	50.00	50.00	50.00	50.00	32.29
Mean	30.30	31.52	31.66	32.56	32.65	33.13	31.46	32.19	31.93
Standard Deviation	29.56	30.25	29.97	29.87	30.35	30.39	29.45	29.14	29.87
10th Percentile	0.00	0.00	0.00	0.00	0.00	0.00	0.00	0.00	0.00
25th Percentile	0.00	0.00	0.00	0.00	0.00	0.00	0.00	0.00	0.00
50th Percentile (Median)	25.00	25.00	25.00	25.00	26.47	28.57	26.67	28.00	26.21
75th Percentile	50.00	50.00	50.00	50.00	50.00	50.00	50.00	50.00	50.00
90th Percentile	75.00	75.00	75.00	80.00	75.00	80.00	72.73	75.00	75.97
# Units	464	451	473	475	465	495	478	443	468

If the number of units or hospitals is less than five, comparison data are suppressed to maintain confidentiality. If the number of units or hospitals is less than 20, comparison data may vary substantially over the time period and should be used with caution. For additional information, please refer to NDNQI reference documents.

Phelps Memorial Hospital

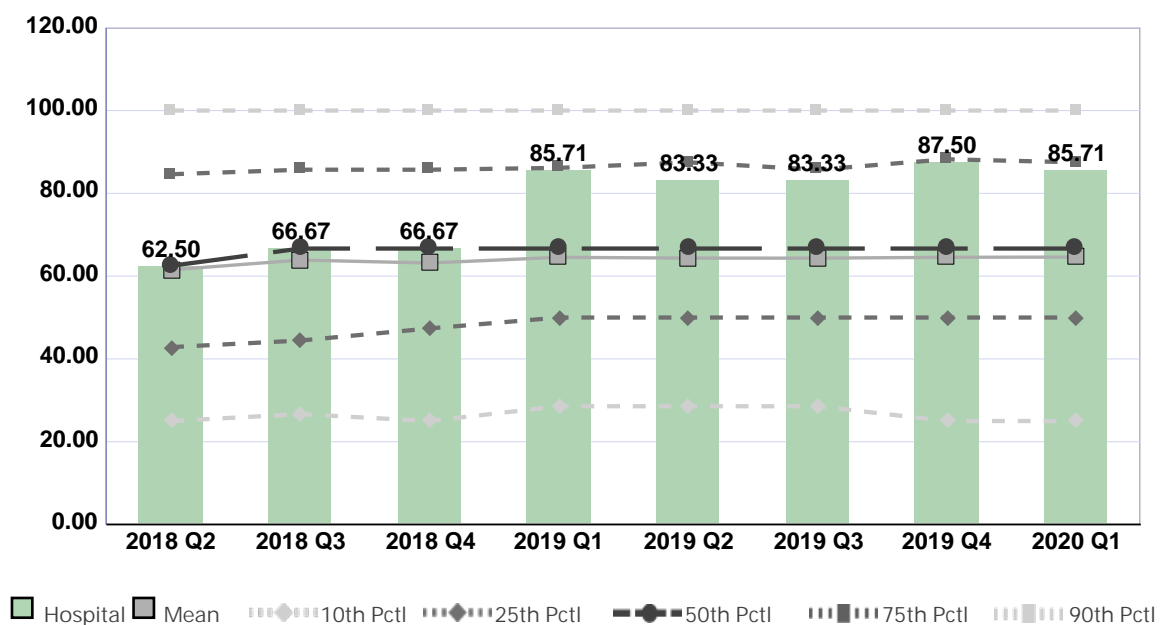
Compared by: All Hospitals

Peer Group: All Hospitals

Unit Type: Procedural Unit

Unit: Wound Clinic

Measure: Percent of Direct Care RNs with BSN, MSN, or PhD



Quarter	2018 Q2	2018 Q3	2018 Q4	2019 Q1	2019 Q2	2019 Q3	2019 Q4	2020 Q1	Average
Unit	62.50	66.67	66.67	85.71	83.33	83.33	87.50	85.71	77.68
Mean	61.53	63.89	63.17	64.55	64.36	64.35	64.55	64.61	63.88
Standard Deviation	27.68	27.20	27.37	27.20	27.33	26.67	28.01	27.34	27.35
10th Percentile	25.00	26.67	25.00	28.57	28.57	28.57	25.00	25.00	26.55
25th Percentile	42.86	44.44	47.37	50.00	50.00	50.00	50.00	50.00	48.08
50th Percentile (Median)	62.50	66.67	66.67	66.67	66.67	66.67	66.67	66.67	66.15
75th Percentile	84.62	85.71	85.71	86.15	87.50	85.71	88.24	87.50	86.39
90th Percentile	100.00	100.00	100.00	100.00	100.00	100.00	100.00	100.00	100.00
# Units	470	458	481	482	474	505	482	447	475

If the number of units or hospitals is less than five, comparison data are suppressed to maintain confidentiality. If the number of units or hospitals is less than 20, comparison data may vary substantially over the time period and should be used with caution. For additional information, please refer to NDNQI reference documents.

Phelps Memorial Hospital

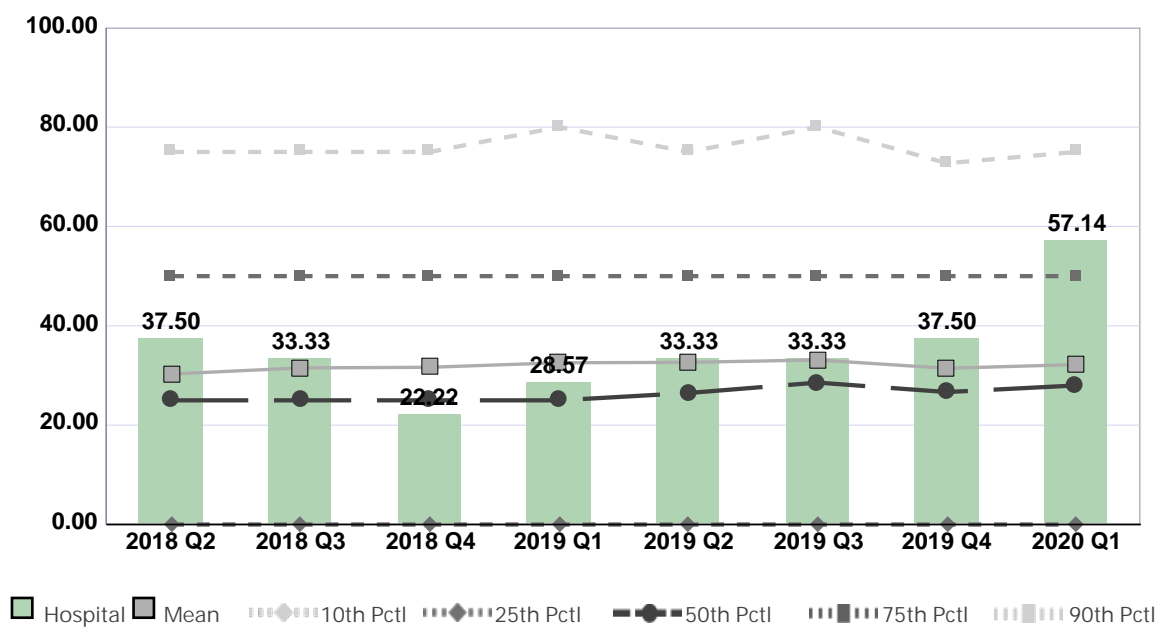
Compared by: All Hospitals

Peer Group: All Hospitals

Unit Type: Procedural Unit

Unit: Wound Clinic

Measure: Percent of Direct Care RNs with Specialty Nursing Certification



Quarter	2018 Q2	2018 Q3	2018 Q4	2019 Q1	2019 Q2	2019 Q3	2019 Q4	2020 Q1	Average
Unit	37.50	33.33	22.22	28.57	33.33	33.33	37.50	57.14	35.37
Mean	30.30	31.52	31.66	32.56	32.65	33.13	31.46	32.19	31.93
Standard Deviation	29.56	30.25	29.97	29.87	30.35	30.39	29.45	29.14	29.87
10th Percentile	0.00	0.00	0.00	0.00	0.00	0.00	0.00	0.00	0.00
25th Percentile	0.00	0.00	0.00	0.00	0.00	0.00	0.00	0.00	0.00
50th Percentile (Median)	25.00	25.00	25.00	25.00	26.47	28.57	26.67	28.00	26.21
75th Percentile	50.00	50.00	50.00	50.00	50.00	50.00	50.00	50.00	50.00
90th Percentile	75.00	75.00	75.00	80.00	75.00	80.00	72.73	75.00	75.97
# Units	464	451	473	475	465	495	478	443	468

If the number of units or hospitals is less than five, comparison data are suppressed to maintain confidentiality. If the number of units or hospitals is less than 20, comparison data may vary substantially over the time period and should be used with caution. For additional information, please refer to NDNQI reference documents.

Phelps Memorial Hospital

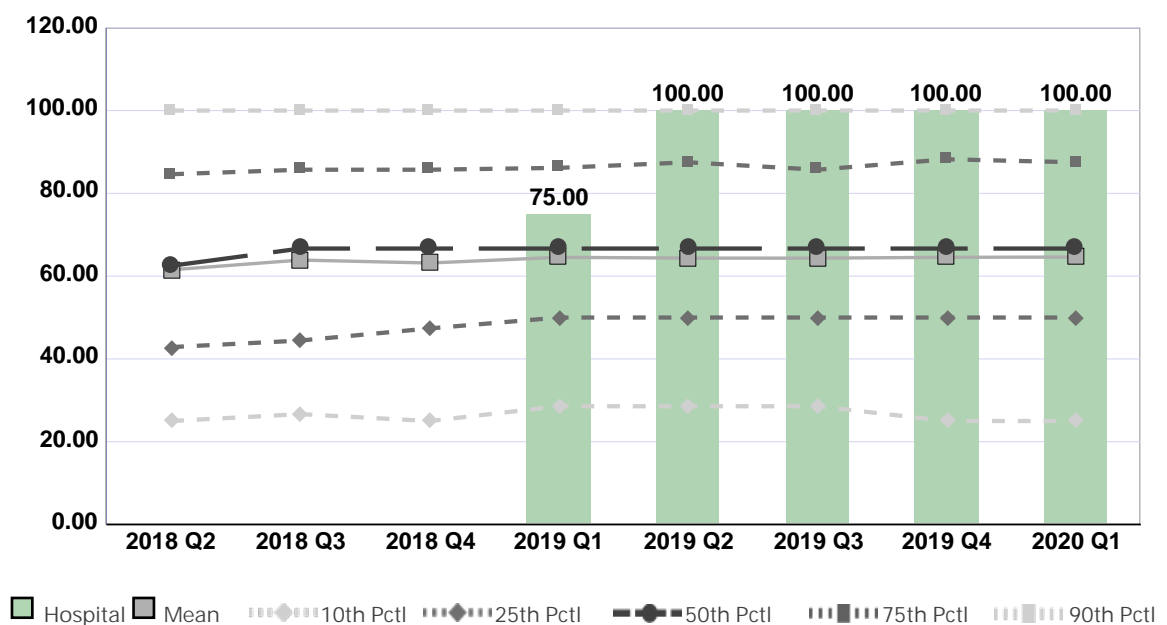
Compared by: All Hospitals

Peer Group: All Hospitals

Unit Type: Procedural Unit

Unit: Hyperbaric

Measure: Percent of Direct Care RNs with BSN, MSN, or PhD



Quarter	2018 Q2	2018 Q3	2018 Q4	2019 Q1	2019 Q2	2019 Q3	2019 Q4	2020 Q1	Average
Unit	No Data	No Data	No Data	75.00	100.00	100.00	100.00	100.00	95.00
Mean	61.53	63.89	63.17	64.55	64.36	64.35	64.55	64.61	63.88
Standard Deviation	27.68	27.20	27.37	27.20	27.33	26.67	28.01	27.34	27.35
10th Percentile	25.00	26.67	25.00	28.57	28.57	28.57	25.00	25.00	26.55
25th Percentile	42.86	44.44	47.37	50.00	50.00	50.00	50.00	50.00	48.08
50th Percentile (Median)	62.50	66.67	66.67	66.67	66.67	66.67	66.67	66.67	66.15
75th Percentile	84.62	85.71	85.71	86.15	87.50	85.71	88.24	87.50	86.39
90th Percentile	100.00	100.00	100.00	100.00	100.00	100.00	100.00	100.00	100.00
# Units	470	458	481	482	474	505	482	447	475

If the number of units or hospitals is less than five, comparison data are suppressed to maintain confidentiality. If the number of units or hospitals is less than 20, comparison data may vary substantially over the time period and should be used with caution. For additional information, please refer to NDNQI reference documents.

Phelps Memorial Hospital

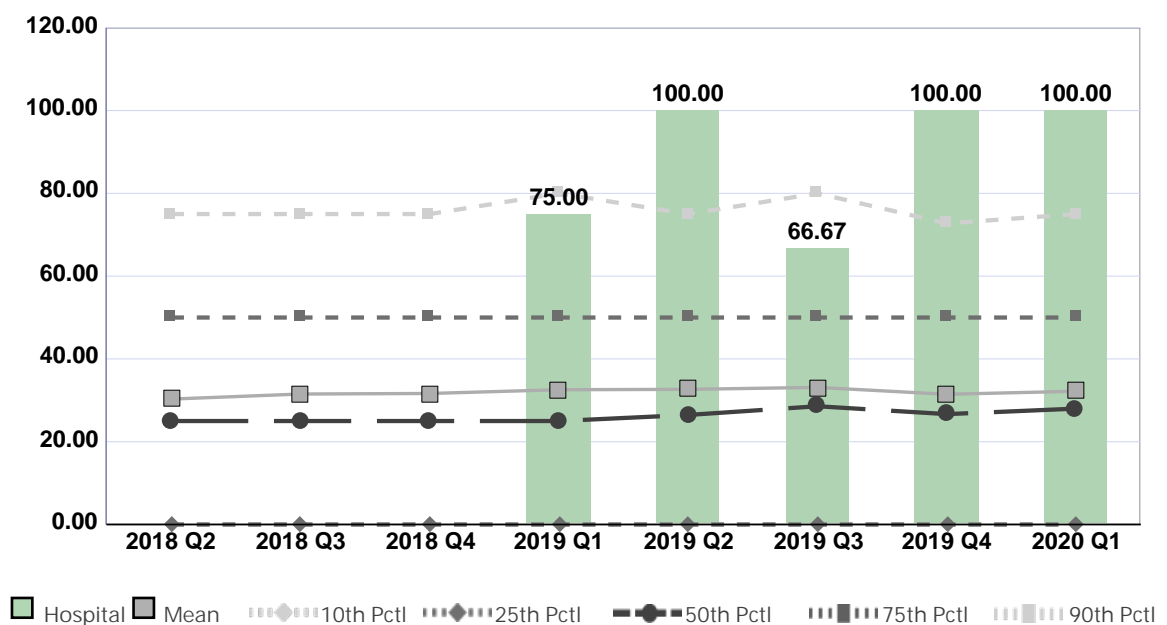
Compared by: All Hospitals

Peer Group: All Hospitals

Unit Type: Procedural Unit

Unit: Hyperbaric

Measure: Percent of Direct Care RNs with Specialty Nursing Certification



Quarter	2018 Q2	2018 Q3	2018 Q4	2019 Q1	2019 Q2	2019 Q3	2019 Q4	2020 Q1	Average
Unit	No Data	No Data	No Data	75.00	100.00	66.67	100.00	100.00	88.33
Mean	30.30	31.52	31.66	32.56	32.65	33.13	31.46	32.19	31.93
Standard Deviation	29.56	30.25	29.97	29.87	30.35	30.39	29.45	29.14	29.87
10th Percentile	0.00	0.00	0.00	0.00	0.00	0.00	0.00	0.00	0.00
25th Percentile	0.00	0.00	0.00	0.00	0.00	0.00	0.00	0.00	0.00
50th Percentile (Median)	25.00	25.00	25.00	25.00	26.47	28.57	26.67	28.00	26.21
75th Percentile	50.00	50.00	50.00	50.00	50.00	50.00	50.00	50.00	50.00
90th Percentile	75.00	75.00	75.00	80.00	75.00	80.00	72.73	75.00	75.97
# Units	464	451	473	475	465	495	478	443	468

If the number of units or hospitals is less than five, comparison data are suppressed to maintain confidentiality. If the number of units or hospitals is less than 20, comparison data may vary substantially over the time period and should be used with caution. For additional information, please refer to NDNQI reference documents.

Phelps Memorial Hospital

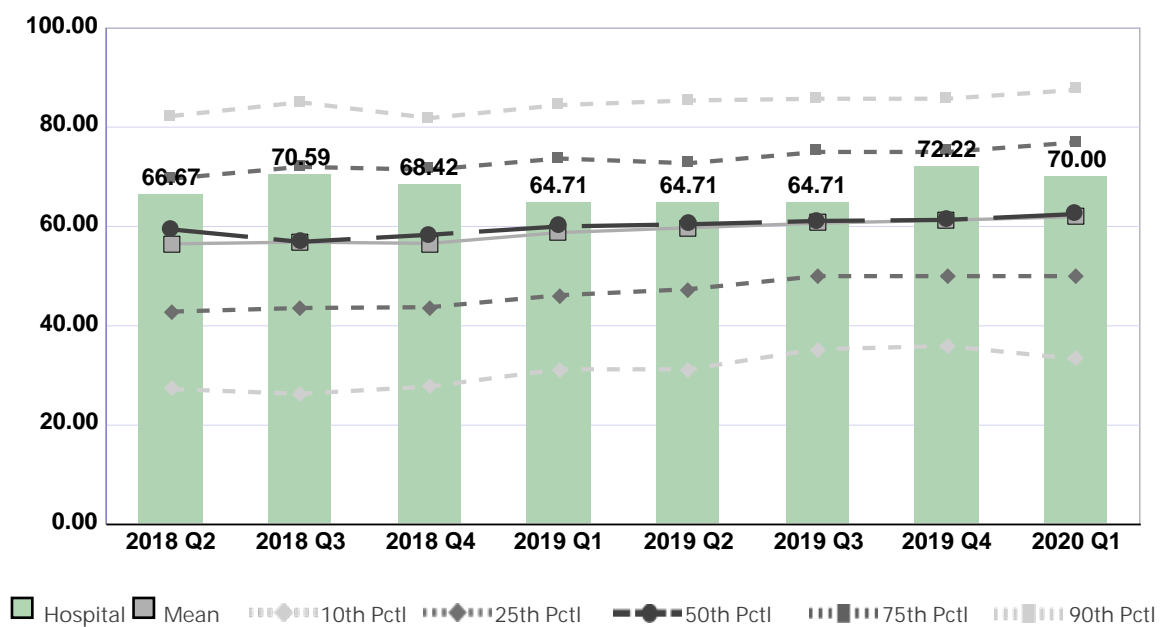
Compared by: All Hospitals

Peer Group: All Hospitals

Unit Type: OR-On call staff after hours

Unit: OR

Measure: Percent of Direct Care RNs with BSN, MSN, or PhD



Quarter	2018 Q2	2018 Q3	2018 Q4	2019 Q1	2019 Q2	2019 Q3	2019 Q4	2020 Q1	Average
Unit	66.67	70.59	68.42	64.71	64.71	64.71	72.22	70.00	67.75
Mean	56.50	56.85	56.59	58.77	59.74	60.67	61.26	61.97	59.04
Standard Deviation	20.21	22.01	20.75	20.94	20.12	20.24	19.29	20.11	20.46
10th Percentile	27.27	26.32	27.78	31.25	31.25	35.29	35.92	33.33	31.05
25th Percentile	42.86	43.59	43.75	46.15	47.37	50.00	50.00	50.00	46.71
50th Percentile (Median)	59.42	56.90	58.33	60.00	60.43	61.11	61.33	62.50	60.00
75th Percentile	69.62	72.00	71.43	73.68	72.73	75.00	75.00	76.92	73.30
90th Percentile	82.22	85.00	81.82	84.44	85.37	85.71	85.71	87.50	84.72
# Units	256	246	249	246	238	241	230	190	237

If the number of units or hospitals is less than five, comparison data are suppressed to maintain confidentiality. If the number of units or hospitals is less than 20, comparison data may vary substantially over the time period and should be used with caution. For additional information, please refer to NDNQI reference documents.

Phelps Memorial Hospital

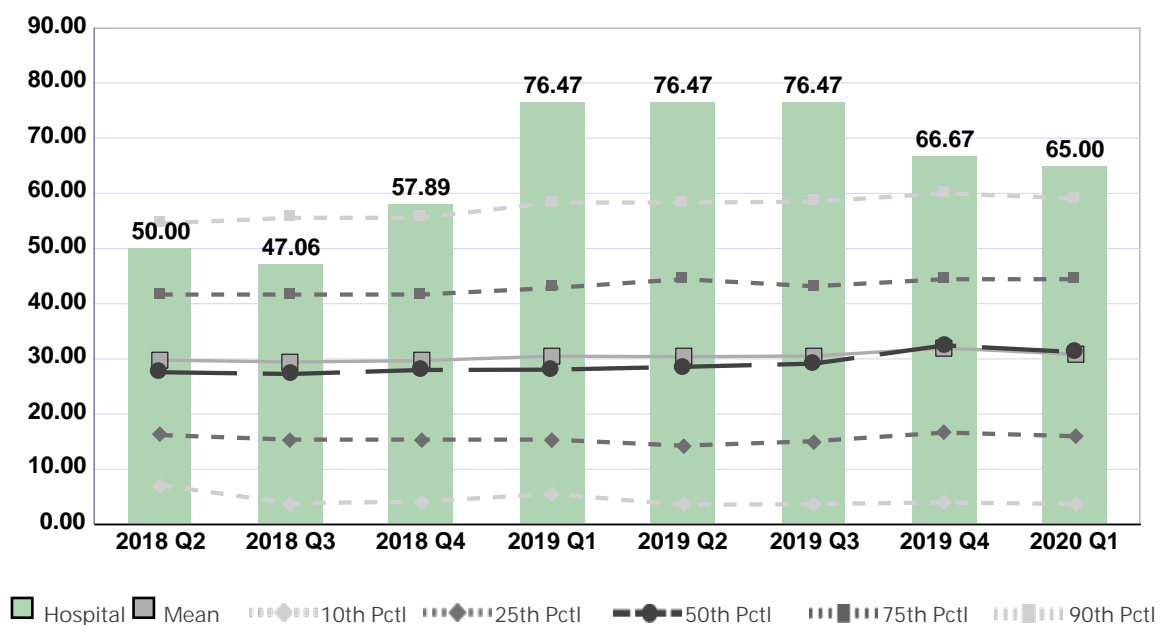
Compared by: All Hospitals

Peer Group: All Hospitals

Unit Type: OR-On call staff after hours

Unit: OR

Measure: Percent of Direct Care RNs with Specialty Nursing Certification



Quarter	2018 Q2	2018 Q3	2018 Q4	2019 Q1	2019 Q2	2019 Q3	2019 Q4	2020 Q1	Average
Unit	50.00	47.06	57.89	76.47	76.47	76.47	66.67	65.00	64.50
Mean	29.79	29.44	29.69	30.51	30.40	30.53	31.99	30.83	30.40
Standard Deviation	18.87	19.25	18.81	19.78	19.67	19.91	20.77	19.75	19.60
10th Percentile	7.14	3.85	4.17	5.56	3.57	3.70	4.00	3.70	4.46
25th Percentile	16.22	15.38	15.38	15.38	14.29	15.10	16.67	16.00	15.55
50th Percentile (Median)	27.59	27.27	28.00	28.06	28.57	29.15	32.46	31.25	29.04
75th Percentile	41.67	41.67	41.67	42.86	44.44	43.17	44.44	44.44	43.04
90th Percentile	54.55	55.56	55.56	58.33	58.33	58.49	60.00	59.09	57.49
# Units	249	239	247	242	231	228	224	186	231

If the number of units or hospitals is less than five, comparison data are suppressed to maintain confidentiality. If the number of units or hospitals is less than 20, comparison data may vary substantially over the time period and should be used with caution. For additional information, please refer to NDNQI reference documents.

Phelps Memorial Hospital

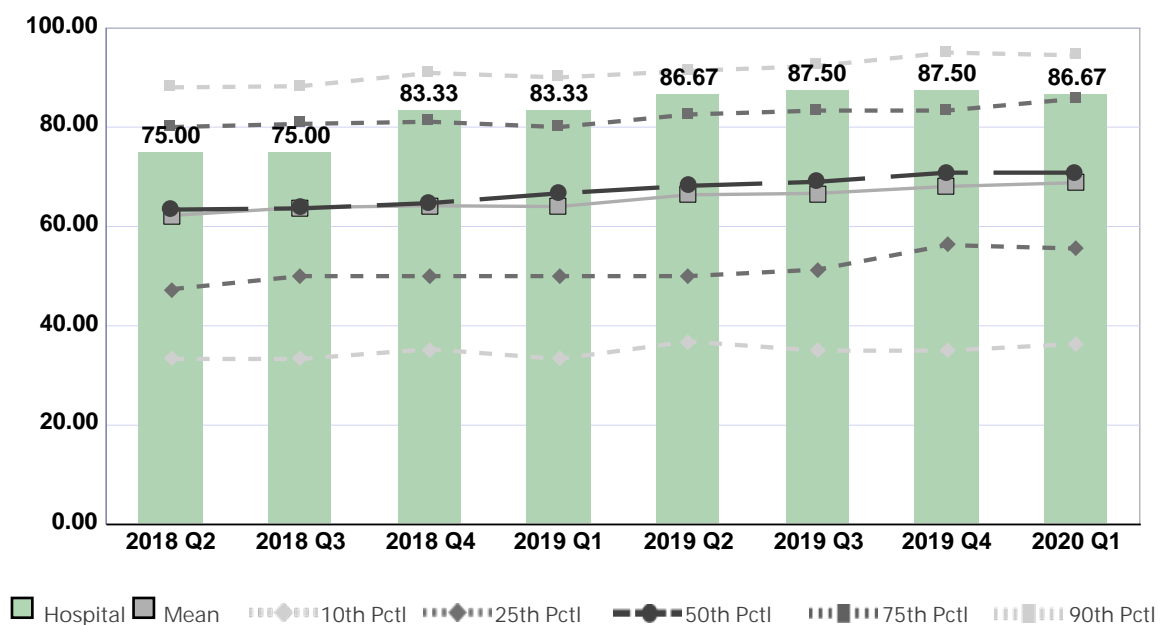
Compared by: All Hospitals

Peer Group: All Hospitals

Unit Type: Post-anesthesia care unit

Unit: PACU

Measure: Percent of Direct Care RNs with BSN, MSN, or PhD



Quarter	2018 Q2	2018 Q3	2018 Q4	2019 Q1	2019 Q2	2019 Q3	2019 Q4	2020 Q1	Average
Unit	75.00	75.00	83.33	83.33	86.67	87.50	87.50	86.67	83.13
Mean	62.22	63.82	64.18	64.01	66.37	66.66	68.06	68.81	65.52
Standard Deviation	21.19	20.81	21.33	21.17	20.65	21.81	21.44	21.61	21.25
10th Percentile	33.33	33.33	35.29	33.33	36.84	35.00	35.00	36.36	34.81
25th Percentile	47.37	50.00	50.00	50.00	50.00	51.32	56.25	55.56	51.31
50th Percentile (Median)	63.40	63.64	64.71	66.67	68.18	68.99	70.83	70.83	67.16
75th Percentile	80.00	80.65	81.08	80.00	82.54	83.33	83.33	85.71	82.08
90th Percentile	88.00	88.24	90.91	90.00	91.30	92.31	95.00	94.44	91.28
# Units	352	331	347	322	323	324	329	271	325

If the number of units or hospitals is less than five, comparison data are suppressed to maintain confidentiality. If the number of units or hospitals is less than 20, comparison data may vary substantially over the time period and should be used with caution. For additional information, please refer to NDNQI reference documents.

Phelps Memorial Hospital

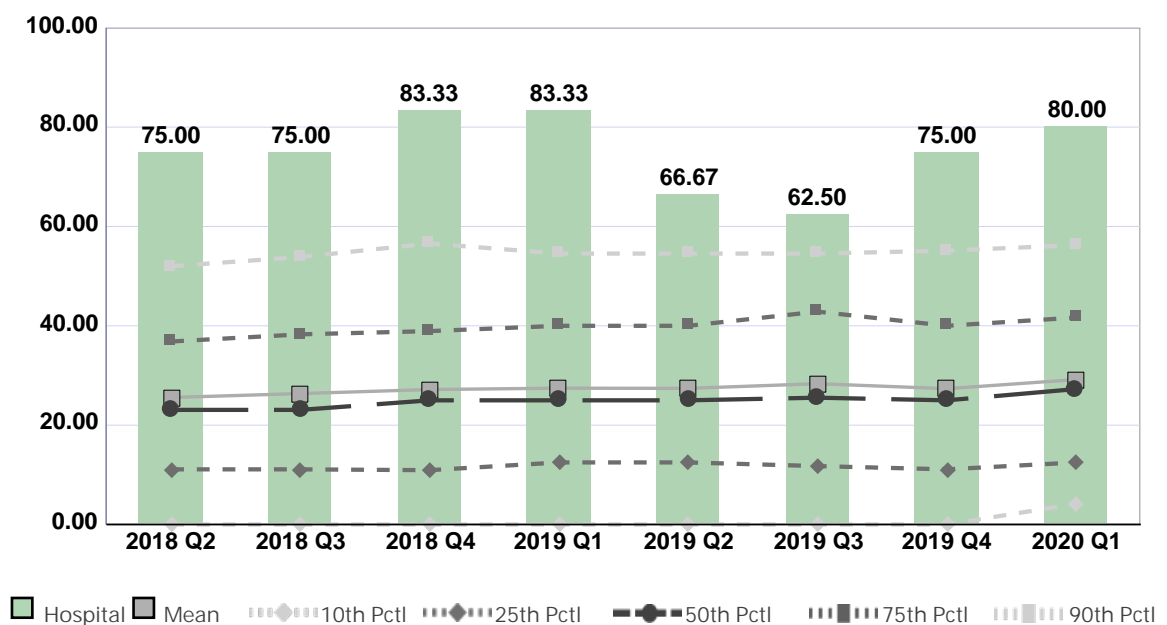
Compared by: All Hospitals

Peer Group: All Hospitals

Unit Type: Post-anesthesia care unit

Unit: PACU

Measure: Percent of Direct Care RNs with Specialty Nursing Certification



Quarter	2018 Q2	2018 Q3	2018 Q4	2019 Q1	2019 Q2	2019 Q3	2019 Q4	2020 Q1	Average
Unit	75.00	75.00	83.33	83.33	66.67	62.50	75.00	80.00	75.10
Mean	25.57	26.36	27.17	27.45	27.41	28.35	27.34	29.18	27.35
Standard Deviation	19.77	20.17	20.77	20.57	19.81	21.10	20.81	20.76	20.47
10th Percentile	0.00	0.00	0.00	0.00	0.00	0.00	0.00	4.17	0.52
25th Percentile	11.11	11.11	10.94	12.50	12.50	11.76	11.11	12.50	11.69
50th Percentile (Median)	23.08	23.08	25.00	25.00	25.00	25.53	25.00	27.27	24.87
75th Percentile	36.84	38.28	38.94	40.00	40.00	42.86	40.00	41.67	39.82
90th Percentile	52.00	53.85	56.57	54.55	54.55	54.55	55.13	56.25	54.68
# Units	345	320	340	315	312	311	322	265	316

If the number of units or hospitals is less than five, comparison data are suppressed to maintain confidentiality. If the number of units or hospitals is less than 20, comparison data may vary substantially over the time period and should be used with caution. For additional information, please refer to NDNQI reference documents.

Phelps Memorial Hospital

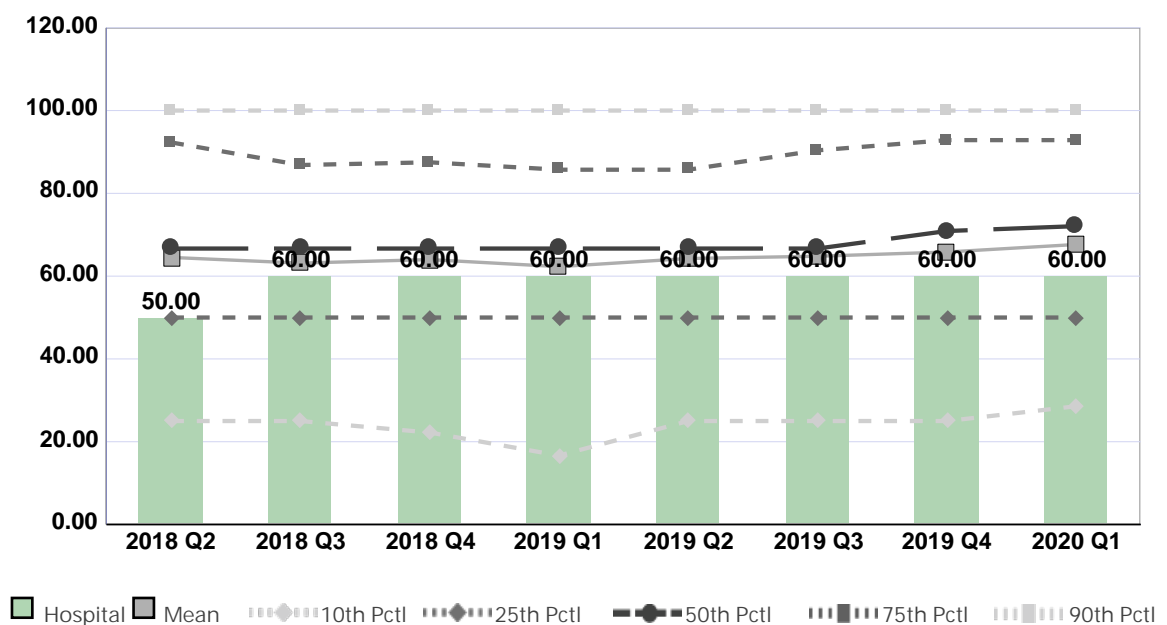
Compared by: All Hospitals

Peer Group: All Hospitals

Unit Type: Cardiac Services

Unit: Outpatient Cardiology

Measure: Percent of Direct Care RNs with BSN, MSN, or PhD



Quarter	2018 Q2	2018 Q3	2018 Q4	2019 Q1	2019 Q2	2019 Q3	2019 Q4	2020 Q1	Average
Unit	50.00	60.00	60.00	60.00	60.00	60.00	60.00	60.00	58.75
Mean	64.52	63.15	64.00	62.30	64.26	64.81	65.82	67.65	64.56
Standard Deviation	29.74	29.42	29.49	30.22	29.07	29.48	29.41	28.73	29.45
10th Percentile	25.00	25.00	22.22	16.67	25.00	25.00	25.00	28.57	24.06
25th Percentile	50.00	50.00	50.00	50.00	50.00	50.00	50.00	50.00	50.00
50th Percentile (Median)	66.67	66.67	66.67	66.67	66.67	66.67	70.90	72.08	67.87
75th Percentile	92.31	86.84	87.50	85.71	85.71	90.38	92.86	92.86	89.27
90th Percentile	100.00	100.00	100.00	100.00	100.00	100.00	100.00	100.00	100.00
# Units	279	274	289	292	282	290	294	266	283

If the number of units or hospitals is less than five, comparison data are suppressed to maintain confidentiality. If the number of units or hospitals is less than 20, comparison data may vary substantially over the time period and should be used with caution. For additional information, please refer to NDNQI reference documents.

Phelps Memorial Hospital

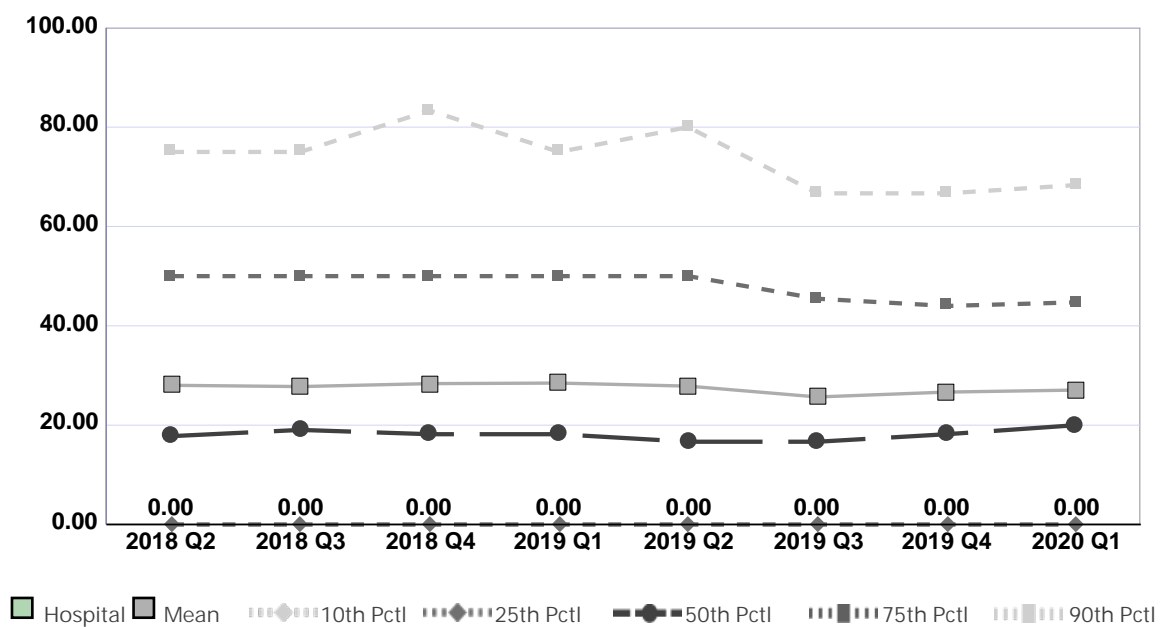
Compared by: All Hospitals

Peer Group: All Hospitals

Unit Type: Cardiac Services

Unit: Outpatient Cardiology

Measure: Percent of Direct Care RNs with Specialty Nursing Certification



Quarter	2018 Q2	2018 Q3	2018 Q4	2019 Q1	2019 Q2	2019 Q3	2019 Q4	2020 Q1	Average
Unit	0.00	0.00	0.00	0.00	0.00	0.00	0.00	0.00	0.00
Mean	28.03	27.77	28.36	28.48	27.86	25.68	26.66	27.07	27.49
Standard Deviation	31.16	30.87	32.03	31.48	31.39	29.20	28.41	28.05	30.32
10th Percentile	0.00	0.00	0.00	0.00	0.00	0.00	0.00	0.00	0.00
25th Percentile	0.00	0.00	0.00	0.00	0.00	0.00	0.00	0.00	0.00
50th Percentile (Median)	17.79	19.05	18.18	18.18	16.67	16.67	18.18	20.00	18.09
75th Percentile	50.00	50.00	50.00	50.00	50.00	45.45	44.00	44.73	48.02
90th Percentile	75.00	75.00	83.33	75.00	80.00	66.67	66.67	68.33	73.75
# Units	274	265	285	287	278	286	289	260	278

If the number of units or hospitals is less than five, comparison data are suppressed to maintain confidentiality. If the number of units or hospitals is less than 20, comparison data may vary substantially over the time period and should be used with caution. For additional information, please refer to NDNQI reference documents.

Phelps Memorial Hospital

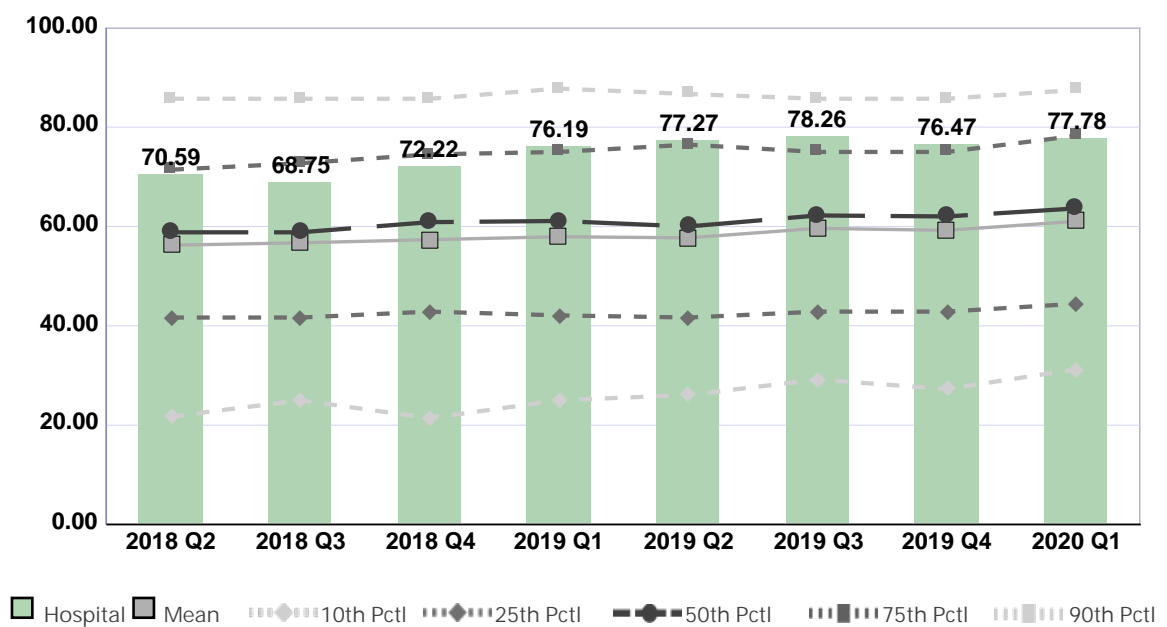
Compared by: All Hospitals

Peer Group: All Hospitals

Unit Type: Pre/Postoperative excludes Phase I

Unit: ASU

Measure: Percent of Direct Care RNs with BSN, MSN, or PhD



Quarter	2018 Q2	2018 Q3	2018 Q4	2019 Q1	2019 Q2	2019 Q3	2019 Q4	2020 Q1	Average
Unit	70.59	68.75	72.22	76.19	77.27	78.26	76.47	77.78	74.69
Mean	56.23	56.71	57.35	57.93	57.71	59.62	59.23	61.03	58.23
Standard Deviation	22.76	22.66	23.17	23.28	23.09	21.35	21.97	21.85	22.52
10th Percentile	21.74	25.00	21.43	25.00	26.09	29.17	27.27	31.25	25.87
25th Percentile	41.67	41.67	42.86	42.11	41.67	42.86	42.86	44.44	42.52
50th Percentile (Median)	58.82	58.82	60.87	61.11	60.00	62.22	62.02	63.64	60.94
75th Percentile	71.43	72.73	74.51	75.00	76.47	75.00	75.00	78.26	74.80
90th Percentile	85.71	85.71	85.71	87.76	86.67	85.71	85.71	87.50	86.31
# Units	209	195	197	198	185	181	178	159	188

If the number of units or hospitals is less than five, comparison data are suppressed to maintain confidentiality. If the number of units or hospitals is less than 20, comparison data may vary substantially over the time period and should be used with caution. For additional information, please refer to NDNQI reference documents.

Phelps Memorial Hospital

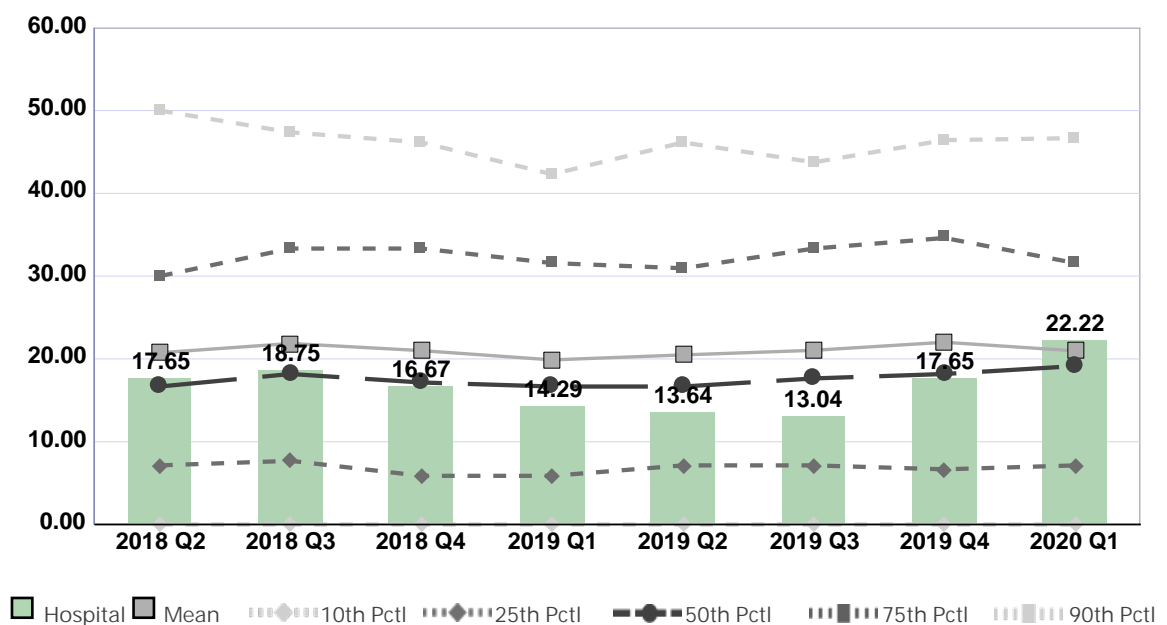
Compared by: All Hospitals

Peer Group: All Hospitals

Unit Type: Pre/Postoperative excludes Phase I

Unit: ASU

Measure: Percent of Direct Care RNs with Specialty Nursing Certification



Quarter	2018 Q2	2018 Q3	2018 Q4	2019 Q1	2019 Q2	2019 Q3	2019 Q4	2020 Q1	Average
Unit	17.65	18.75	16.67	14.29	13.64	13.04	17.65	22.22	16.74
Mean	20.75	21.87	21.01	19.88	20.49	21.04	22.01	20.97	21.00
Standard Deviation	18.68	19.25	18.51	17.33	17.95	17.56	19.34	17.60	18.28
10th Percentile	0.00	0.00	0.00	0.00	0.00	0.00	0.00	0.00	0.00
25th Percentile	7.14	7.69	5.88	5.88	7.14	7.14	6.67	7.14	6.84
50th Percentile (Median)	16.67	18.18	17.16	16.67	16.67	17.65	18.18	19.14	17.54
75th Percentile	30.00	33.33	33.33	31.58	30.95	33.33	34.62	31.58	32.34
90th Percentile	50.00	47.37	46.15	42.31	46.15	43.75	46.43	46.67	46.10
# Units	206	191	194	195	179	174	175	154	184

If the number of units or hospitals is less than five, comparison data are suppressed to maintain confidentiality. If the number of units or hospitals is less than 20, comparison data may vary substantially over the time period and should be used with caution. For additional information, please refer to NDNQI reference documents.