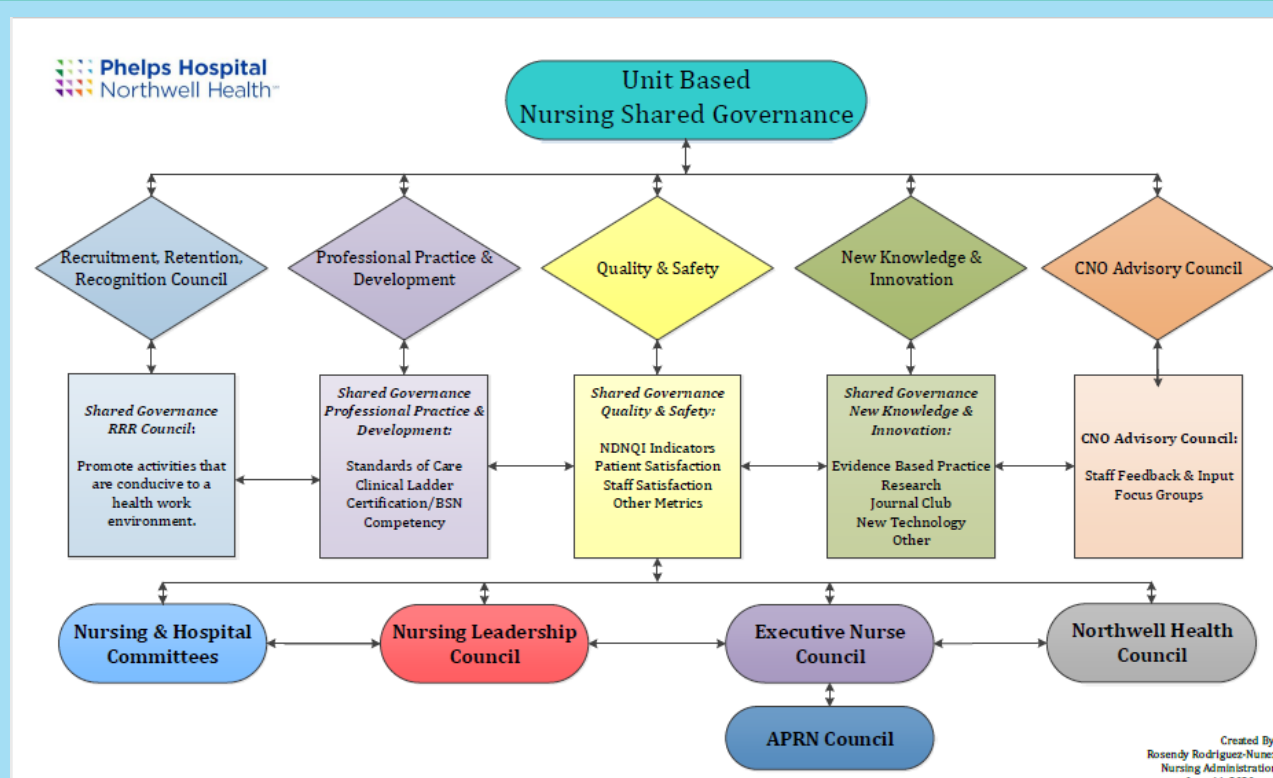
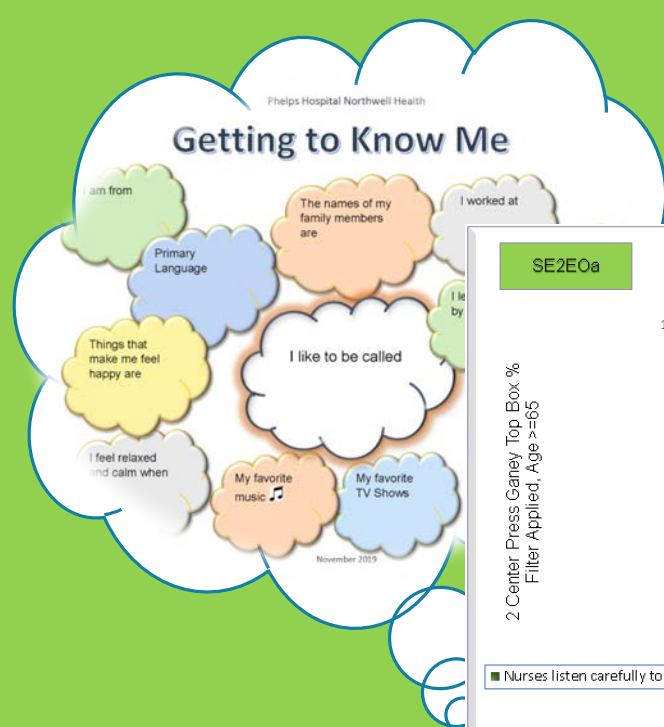


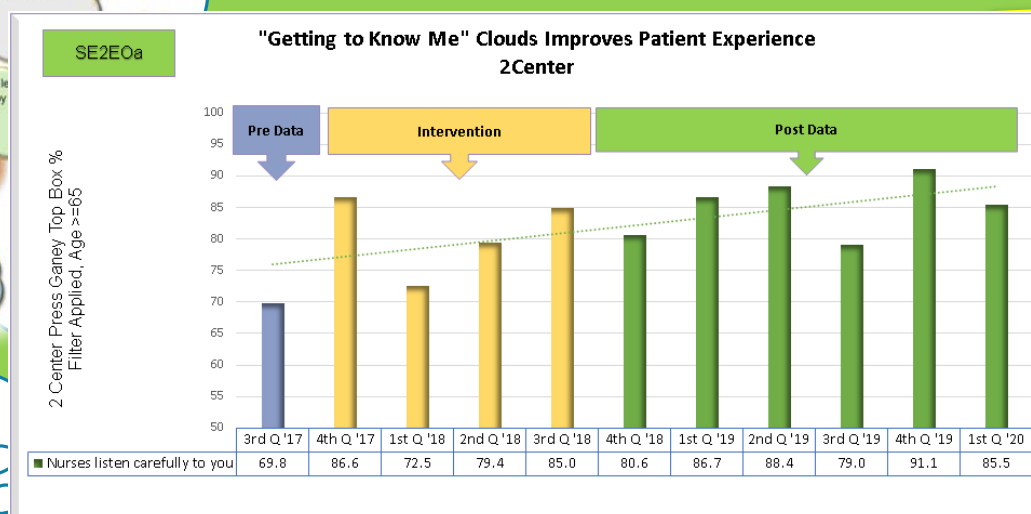
Transformational Leadership



Structural Empowerment



RN Education	1Q '19	2Q '19	3Q '19	4Q '19
RNs w BSN or Higher	90.46%	90.46%	91.67%	92.31%
2019 Unit Goal=Maintain 80% or higher	NDNQI	62.17%	64.27%	64.21%
RNs w Professional Certification	28.57%	28.57%	29.17%	34.62%
2019 Unit Goal = 33%	NDNQI	18.76%	19.36%	17.99%



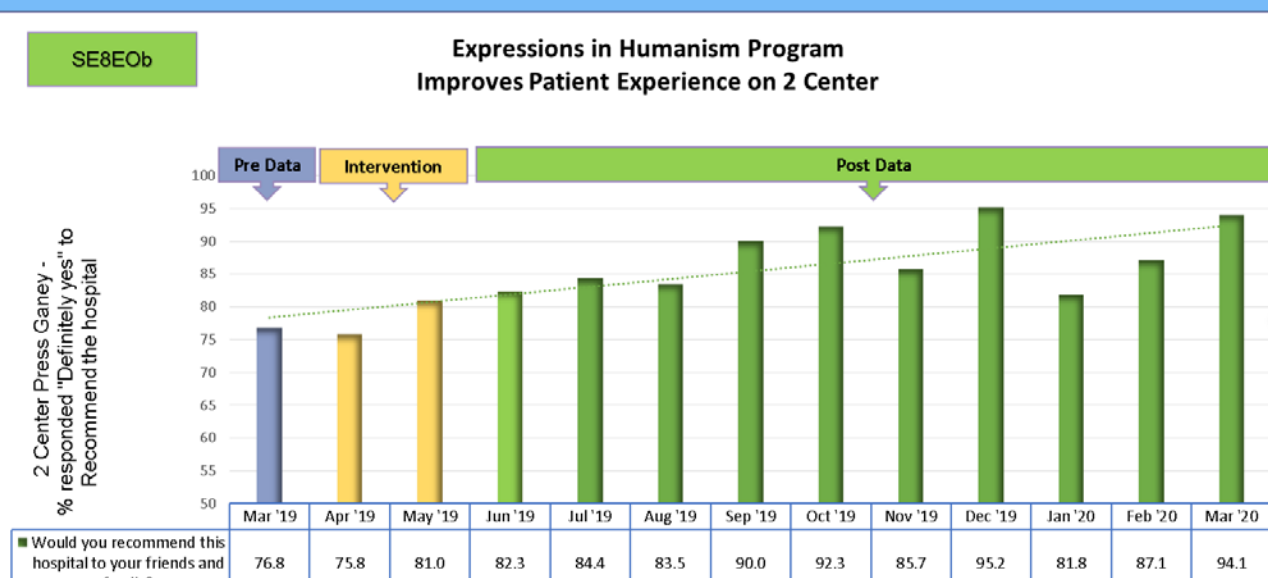
Exemplary Professional Practice



Measurement	Benchmark or Goal	1st Q '19	2nd Q '19	3rd Q '19	4th Q '19	Action Plan
Clinical Indicators						
Falls Per 1,000 Patient Days	NDNQI	3.27	2.67	3.52	1.94	Utilize telesitter when appropriate
Falls with Injury Per 1,000 Patient Days	NDNQI	1.40	0.00	1.17	0.97	Continue to use Post fall huddle form
Hospital Acquired Pressure Injury (Stage II & Above)	Prevalence	0.00	0.00	0.00	0.00	
Restraints	Prevalence	0.00	0.00	0.00	0.00	
Hospital Acquired Pressure Injury (Stage II & Above)	Incidence - Rehab	0.08	0.07	0.10	0.00	
Hospital Acquired Pressure Injury (Stage II & Above)	Incidence - Ortho	0.00	0.00	0.13	0.00	
Central Line-associated Bloodstream Infection (CLABSI)	NDNQI	0.43	0.39	0.53	0.39	2Q - Adoption of Curoc
Catheter-associated Urinary Tract Infections (CAUTI)	NDNQI	0.72	0.78	0.75	0.83	2Q - Education and adoption of the BARD SURESTEP Foley Tray System
Hospital Onset CDIIF per 1,000 Patient Days	NDNQI	0.00	0.00	0.00	0.00	
Hospital Onset MRSA per 1,000 Patient Days	NDNQI	0.02	0.03	0.02	0.02	

Continuous Focus on Positive Patient Outcomes!

New Knowledge, Innovations & Improvements



Participation in the Nursing Research Study - "Impact of Educational Program on 'Expressions of Humanism' on Caring Behaviors, Patient Experience and Quality Outcomes" Positive trend



"Our River of Care is a Bridge to Wellness"

~ Professional Practice Model

