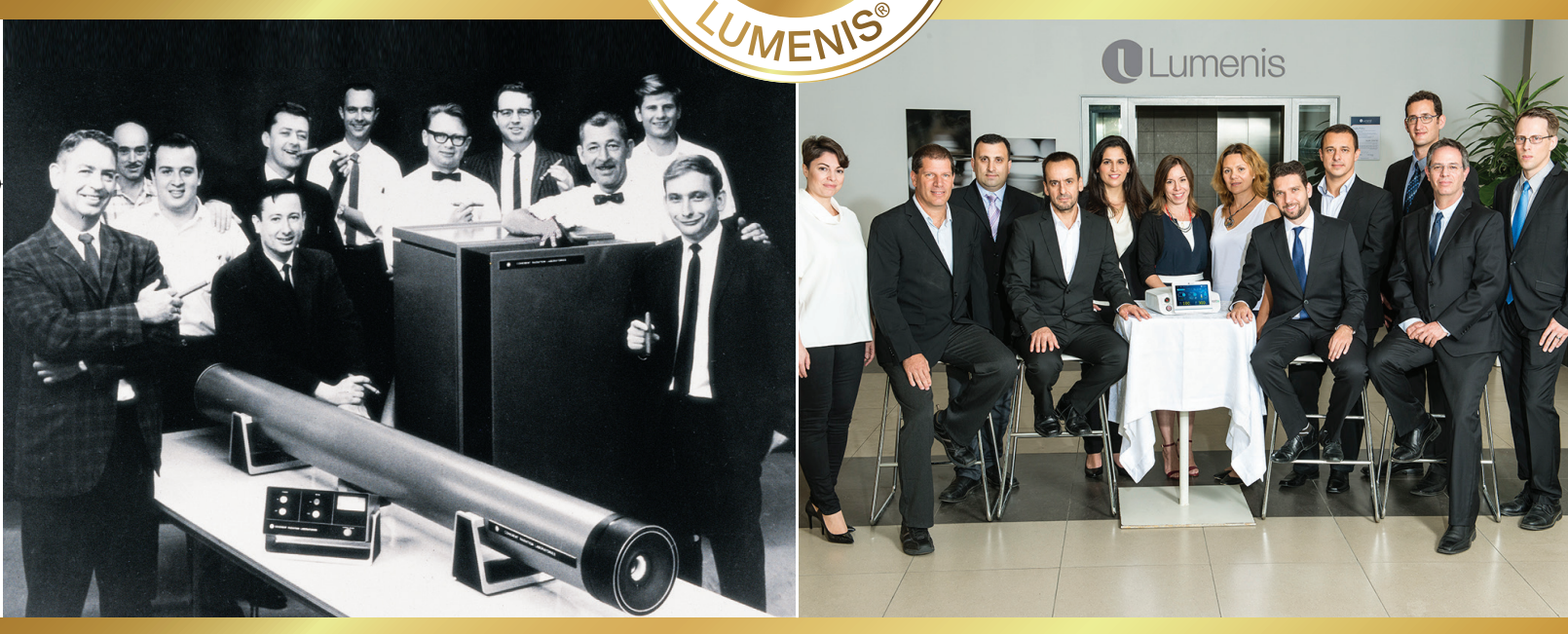


Celebrating 50 years of innovation
with the launch of the new
retinal care photocoagulator



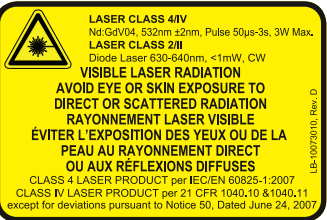
1970: Lumenis (previously Coherent) introduced the first argon laser photocoagulator in ophthalmology.

2016: Lumenis proudly launches the new retinal care portfolio, starring Smart 532™, the new green photocoagulator with SmartPulse™.

Smart 532™ Specifications

Wavelength	532 nm Green
Weight	4 kg (8.82 lbs)
Dimensions	26.3 cm L x 29.5 m W x 13.7 cm H (10.4 in x 11.6 in x 5.4 in)
Dual Port	FC and SMA connectors, Resistor type
Power Requirements	100-240 VAC, 50/60 Hz, Single phase
Cooling System	Air/TEC cooled
CW Pulse Duration	5 ms - 3,000 ms
CW Pulse Interval	10 ms - 1,500 ms or single pulse
SmartPulse™ Duration	0.05 ms - 0.5 ms
SmartPulse™ Interval	0.3 ms - 10 ms or single pulse
SmartPulse™ Duty Cycle	5% / 10% / 15%
Aiming Beam Laser	Diode laser, 635 nm nominal; Intensity: 5 levels up to 1 mW
System Power Output	0 - 2,000 mW
Delivery Devices	Converging Optics Laser Link - Lumenis 1000 Lumenis 990 Lumenis 980 Zeiss 30SL Zeiss SL130 Zeiss 30SL Zeiss SL130 Haag Streit 900BQ Lumenis Array LaserLink™ Smart Selecta Duet
Available Accessories	Physician eye safety filters for all listed slit lamps Single and Dual Endo Kits for Zeiss / Leica / Wild microscopes LIO (Keeler® and Heine® models) Standard, PowerEase or Smart Footswitch

- Manufactured by Lumenis Inc.
1870 South Milestone Drive
Salt Lake City, UT 84104 USA
Tel +801-656-2300
Fax +801-656-2429
- Lumenis (Germany) GmbH
Heinrich-Hertz-Str 3 D-63303
Dreieich-Dreieichenhain
GERMANY
Tel +49 (0) 6103 8335 0
- AMERICAS**
San Jose, CA, USA
Tel +1 408 764 3000
+1 877 586 3647
Fax +1 408 764 3999
- EMEA**
Dreieich Dreieichenhain,
Germany
Tel +49 6103 8335 0
Fax +49 6103 8335 300
Roma (RM), Italy
Tel +39 06 90 75 230
Fax +39 06 90 75 269
Hertfordshire, UK
Tel +44 20 8736 4110
Fax +44 20 8736 4119
- JAPAN**
Tokyo, Japan
Tel +81 3 4431 8300
Fax +81 3 4431 8301
- ASIA / PACIFIC**
Beijing, China
Tel +86 10 5737 6677
Gurgaon, India
Tel +91 124 422 07 95
Kowloon, Hong Kong
Tel +852 217 428 00
Fax +852 272 251 51



www.lumenis.com/Ophthalmology
Lumenis® Certified Service | USA Toll-free 1-877-LUMENIS (1-877-586-3647)
© 2017 All Rights Reserved. The Lumenis Group of Companies. PB-2007099 Rev B



smart532
The SmartPulse™ of Retinal Care

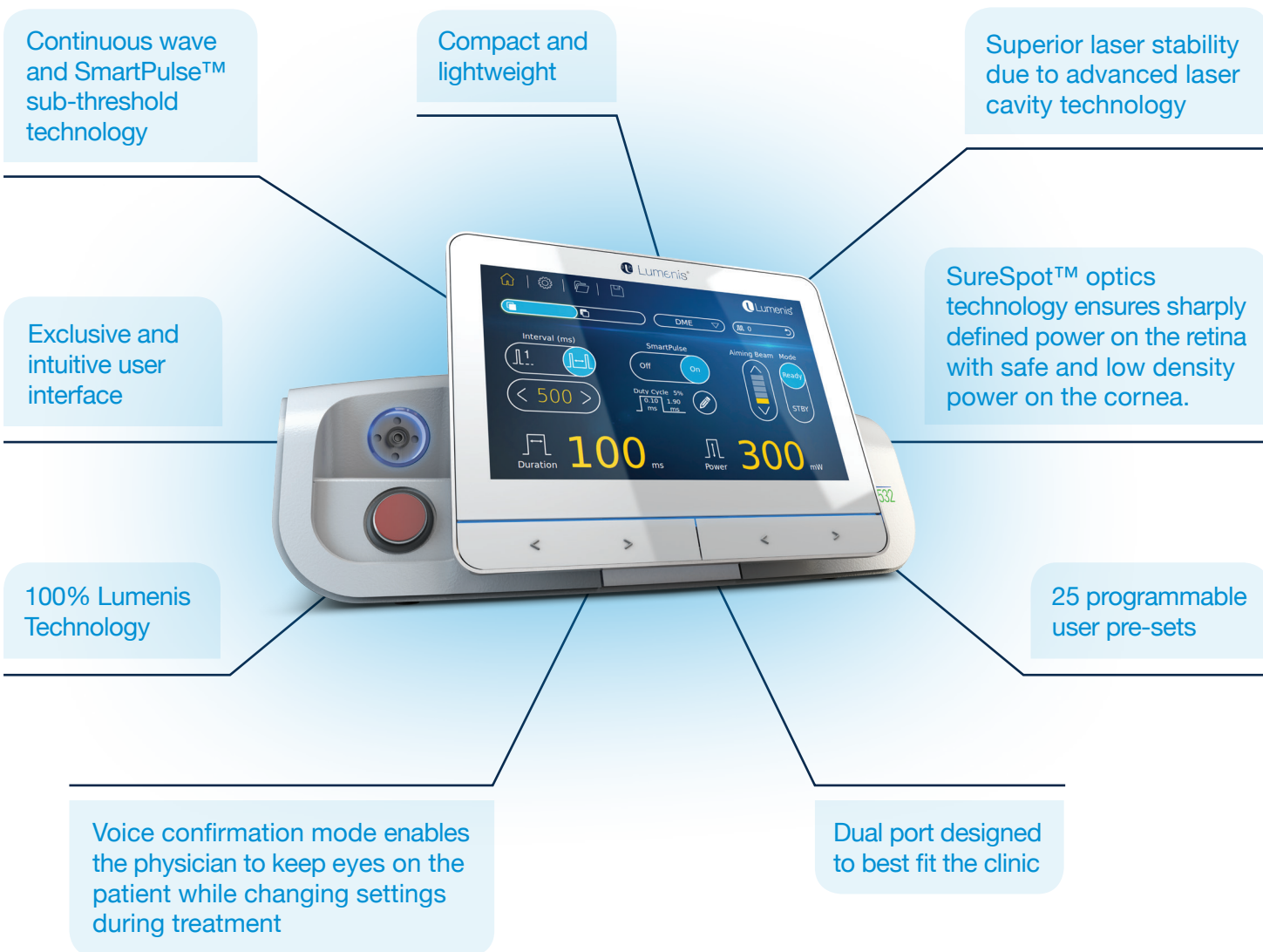
532nm Photocoagulator
with SmartPulse™



Smart532

The SmartPulse™ of Retinal Care

Smart 532™ is the newest photocoagulator by Lumenis, with SmartPulse™ sub-threshold technology.



Smart 532™ Platforms



Pattern Scanning Laser Technology in CW and SmartPulse™

The Array™ LaserLink™ offers advanced pattern scanning capabilities compatible with all Lumenis laser systems and popular slit lamps, wavelength versatility, diverse adjustable patterns and a wide range of laser spot sizes.

Pattern scanning provides enhanced laser application uniformity, shortens treatment time, and offers more patient comfort.

Smart SELECTA Trio

SLT + YAG + Smart532

The smart Selecta Trio offers the comprehensive solution to the ophthalmic practice, allowing glaucoma, cataract and retinal therapy in a single platform. The smart Selecta Trio combines the advantages of SLT, YAG and photocoagulation, all developed and brought to market by Lumenis.

The unit's integrated design, enhanced optics and advanced laser cavity make it a high performing laser product that offers maximal flexibility with minimal footprint.



Delivery Devices

smartLIO™

Advanced Laser Indirect Ophthalmoscope*

The new Smart LIO™ is a wireless multi-color Laser Indirect Ophthalmoscope (LIO) that supports three wavelengths (green, yellow and red).

The LED illumination, provides brighter, whiter illumination, longer battery life and LED life expectancy of up to 10,000 hours.

*Pending US market clearance



LumeProbe™

Ophthalmic Endo-Ocular Probes

The LumeProbe™ product family was designed to deliver laser energy in the safest and most efficient manner, guaranteeing optimal clinical outcomes for all relevant vitreoretinal indications.

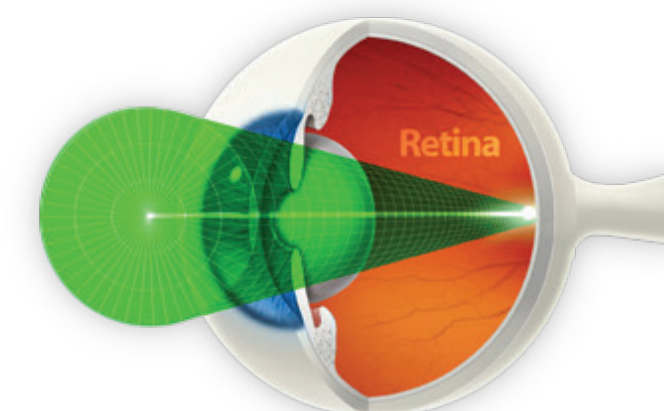
Gauge: 20, 23, 25.

Types: Straight, Curved and Aspirating (multifunctional)



Enhanced Patient Safety

SureSpot™ Patented Technology



✓ Safe and Low Power Density on the Cornea and Lens

✓ Sharp Spot Beam Waist on the Retina

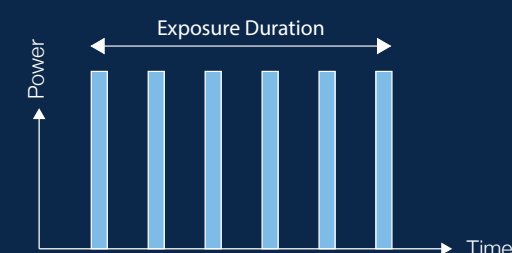


What is SmartPulse™ Technology?

SmartPulse™ is a tissue-sparing solution for the treatment of retinal diseases, that allows sub-threshold retinal treatment.

Lumenis SmartPulse™ is integrated in the Smart 532™ system, to offer maximal efficacy with minimal collateral damage.

SmartPulse™ Mode



"Sub-threshold laser photocoagulation is a safe and effective complement to our armamentarium. It allows me to decrease the treatment burden on our patients while producing excellent and often long-term results."

"With our growing experience in targeted combination therapy for our patients, the Lumenis SmartPulse™ has been a vital addition to my practice"

Caesar K. Luo, MD