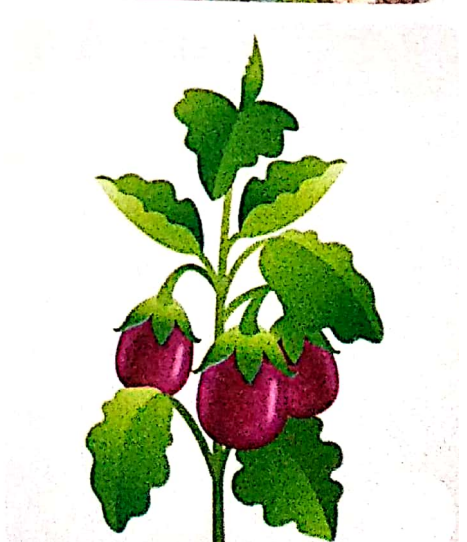
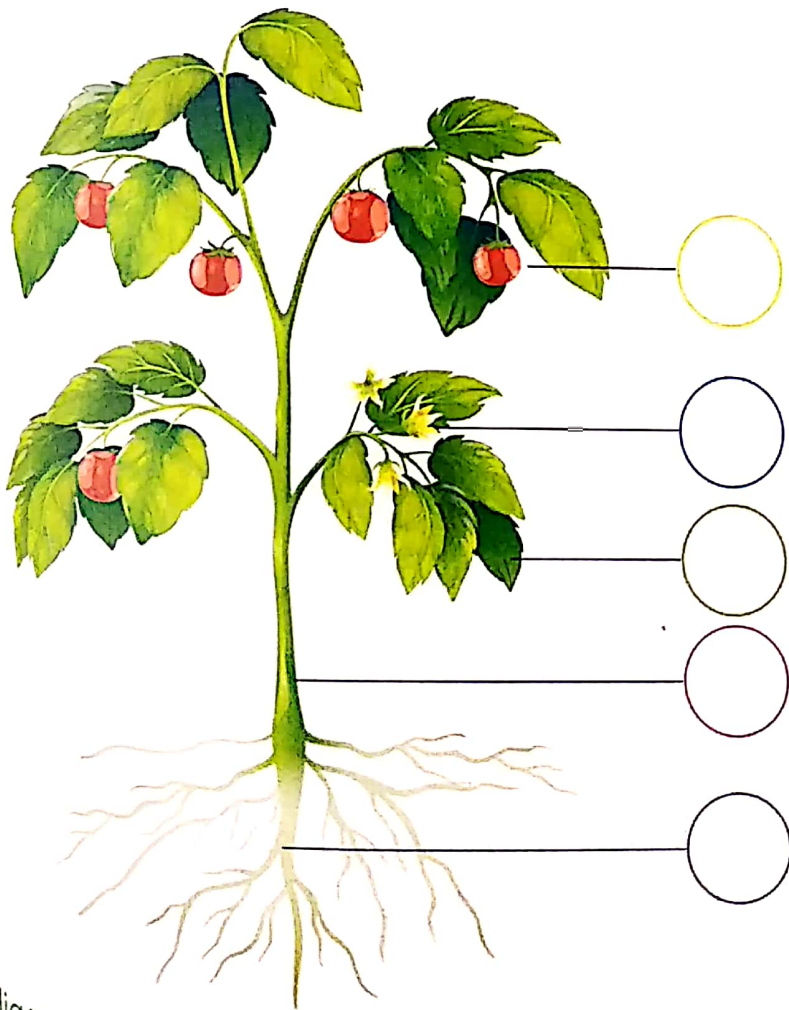


PLANTS AROUND US

Put 'C' for creepers, 'L' for climbers, 'H' for herbs, 'S' for shrubs and 'T' for trees.



Look at the picture of a plant. The names of the parts are scrambled. Put the right number against the **part** in the picture.



1. otor

2. elaf

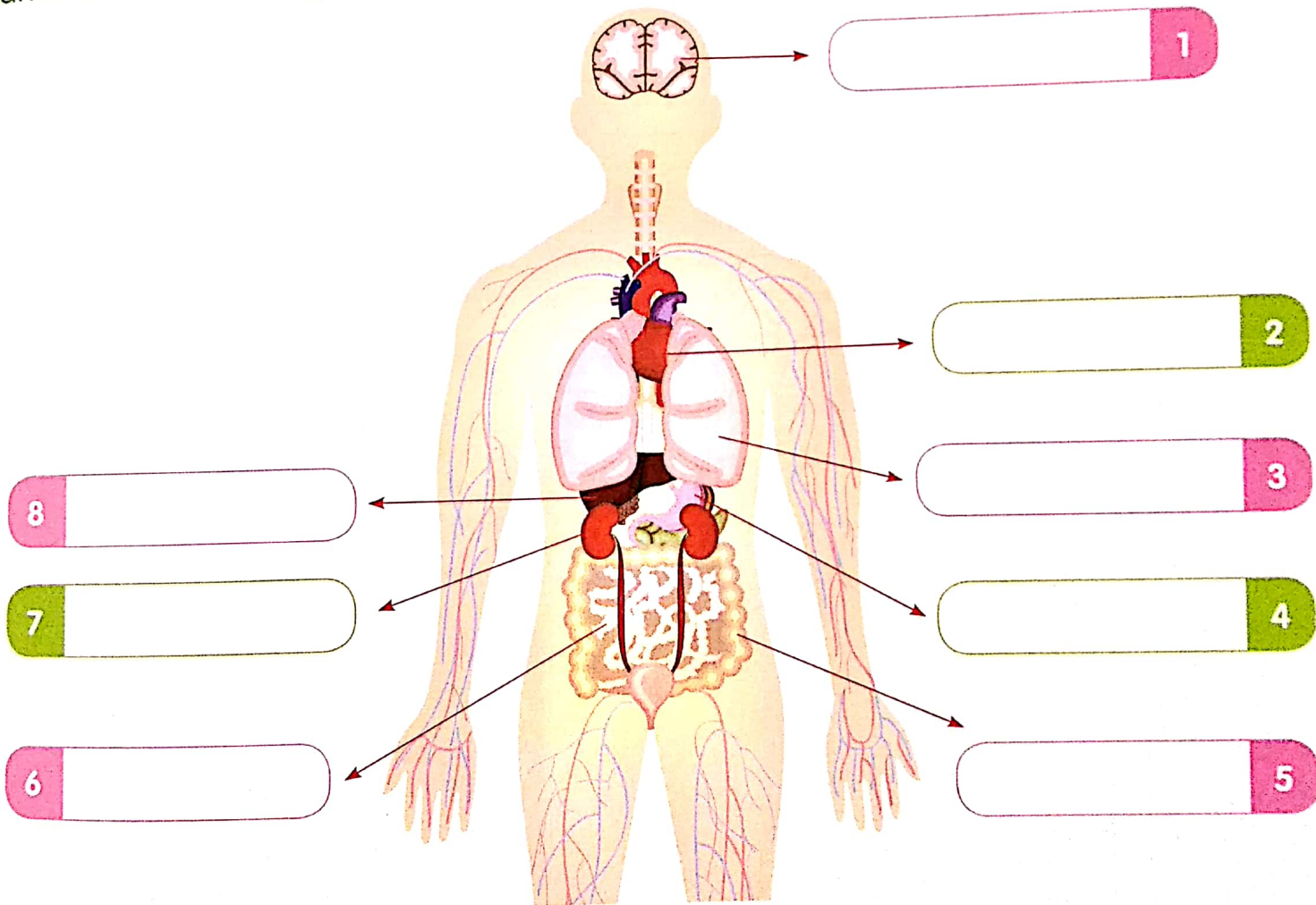
3. fuit

4. tmse

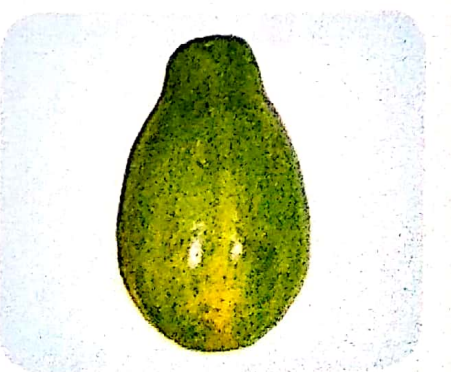
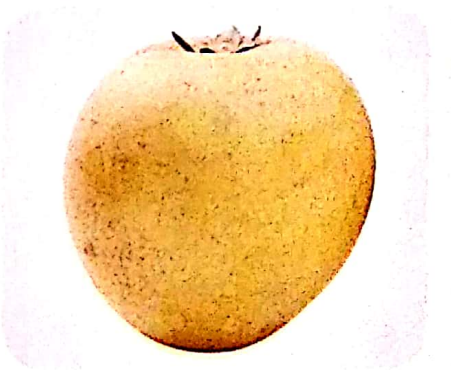
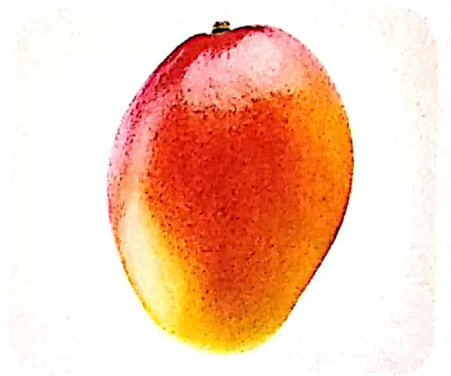
5. rolwef

The diagram below shows the growth of a young plant with two missing stages X and Y. Which of the following shows the correct stages for X and Y. Tick (✓) them.

Name the **internal organs** in the human body picture.



Match the seeds to their fruits.



APP HERE Create a zoo made of leaves. Collect different leaves and fruits.