

# PELVIS

## Ligaments of the pelvic wall

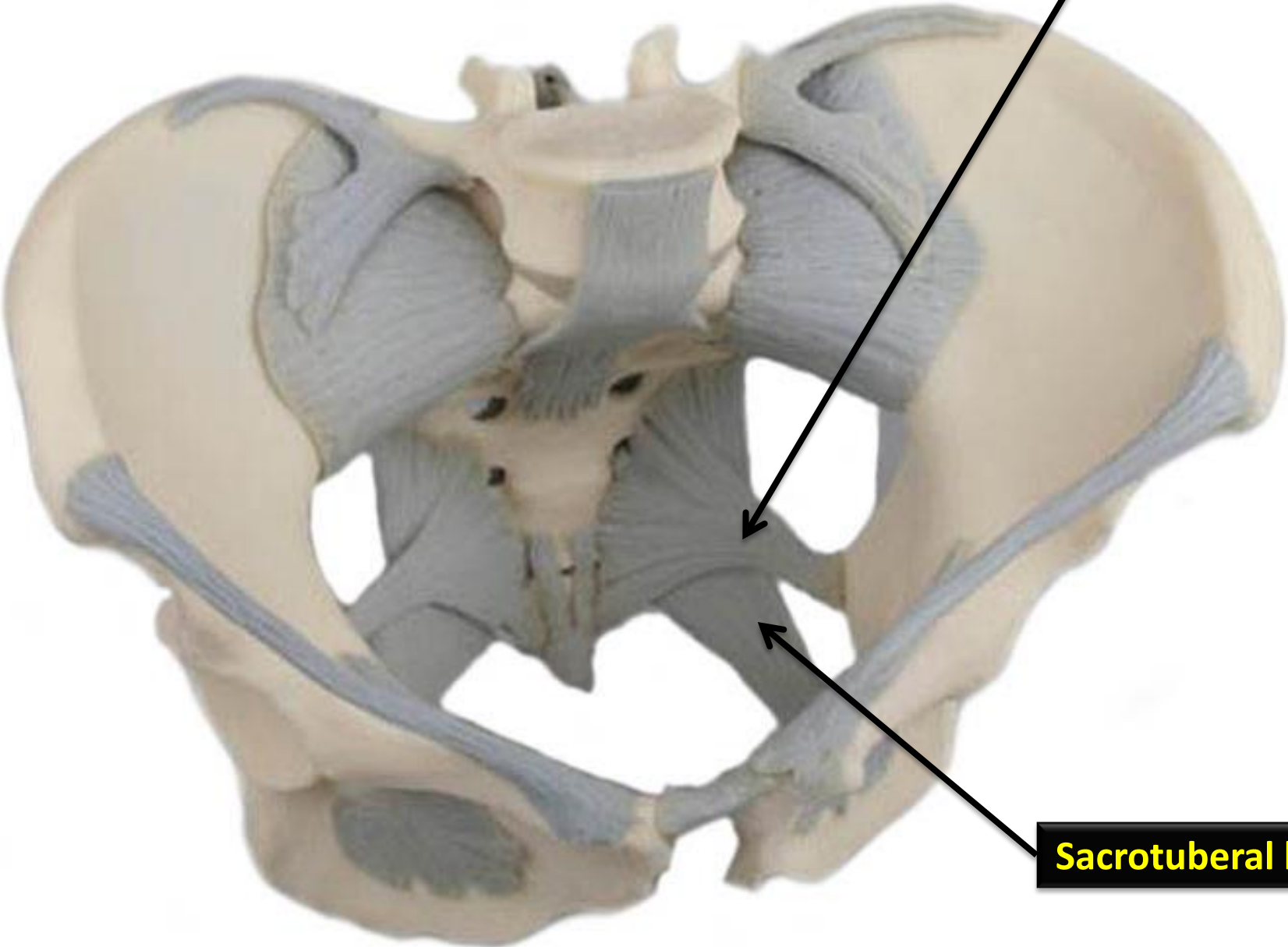
- sacrospinous ligament
- sacrotuberous ligament

## The pelvic diaphragm

### Levator ani muscle :

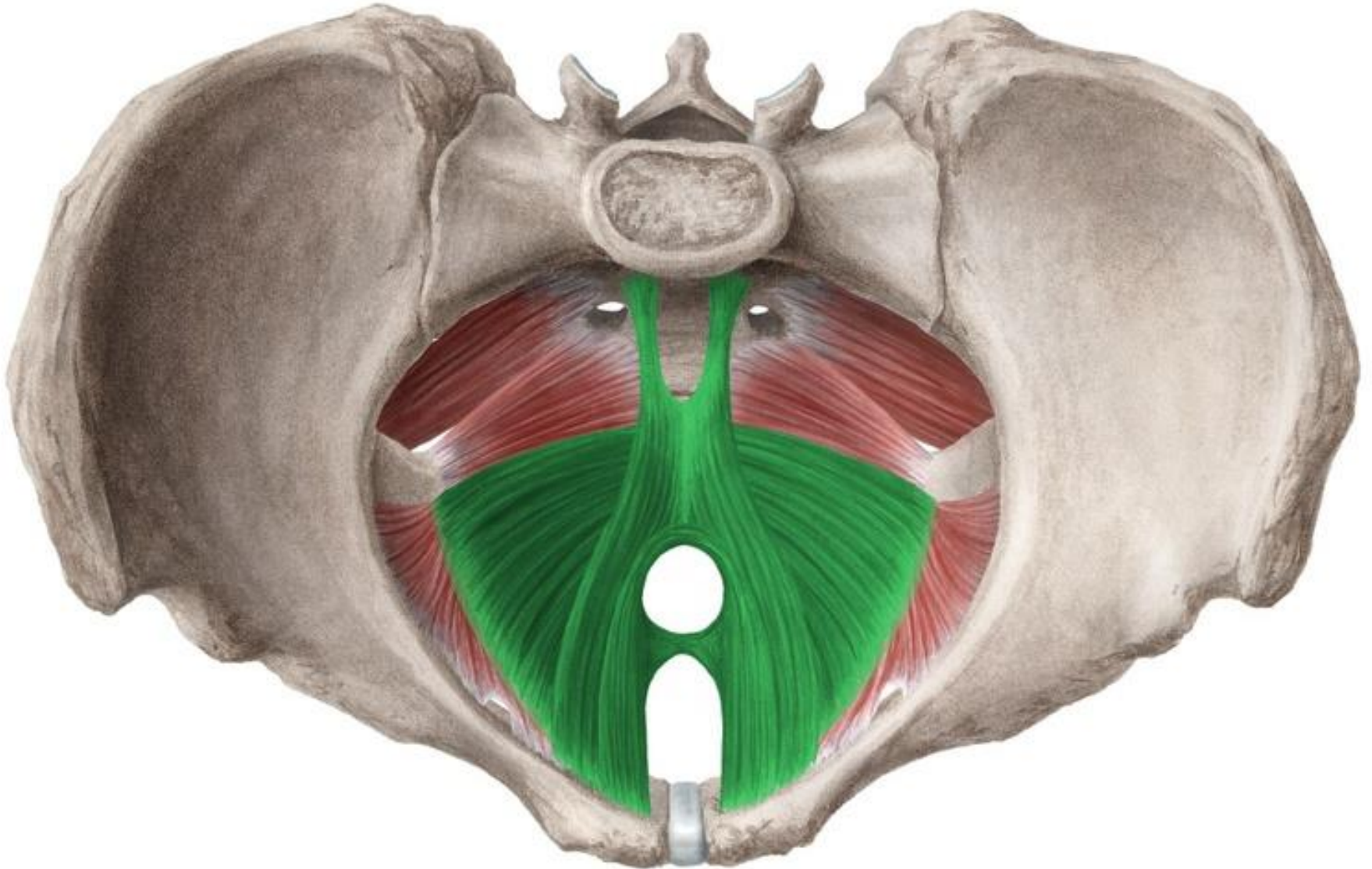
- Puborectalis muscle
- Pubococcygeus muscle
- Iliococcygeus

**Sacrospinous ligament**

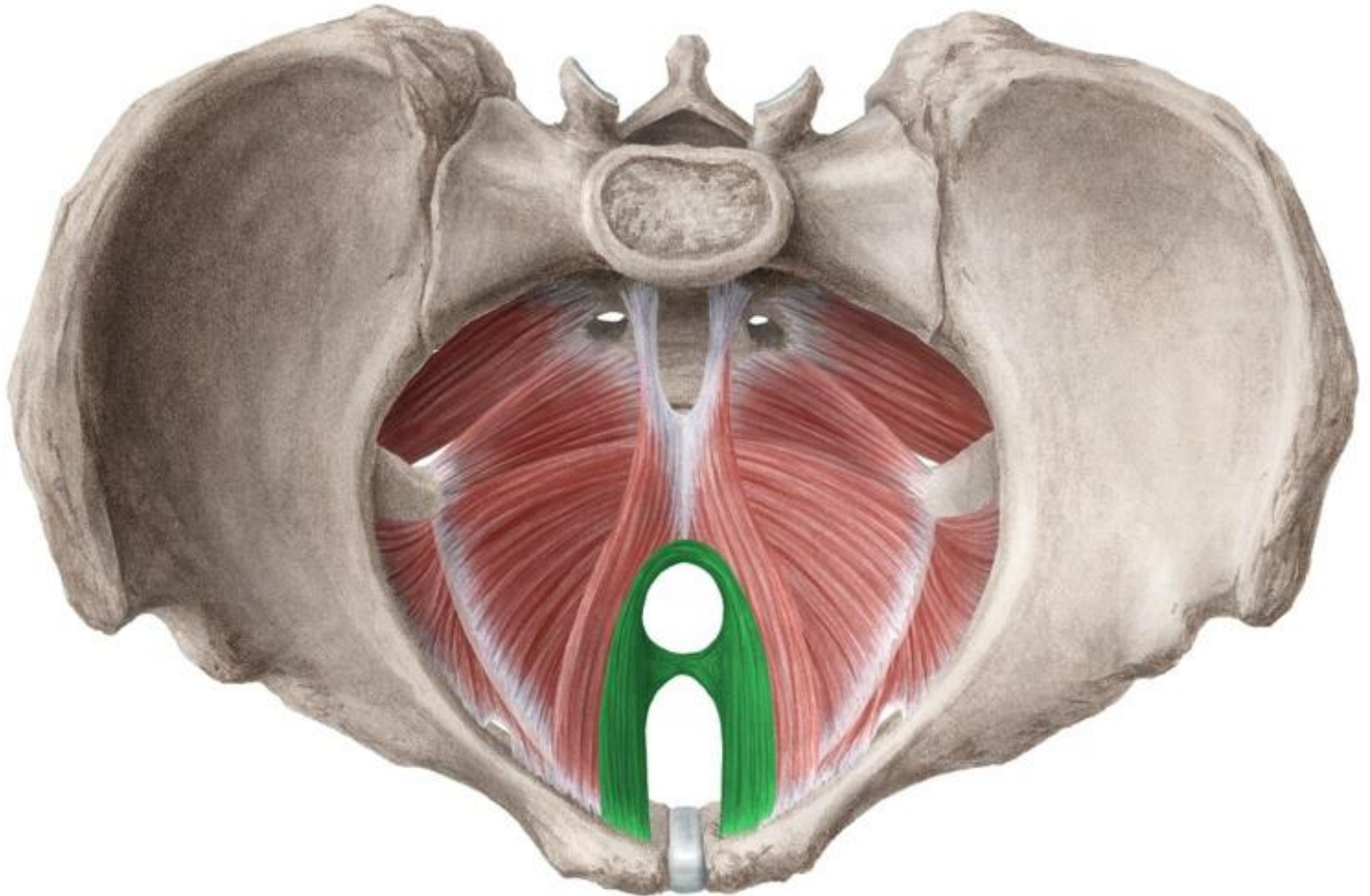


**Sacrotuberous ligament**

levator ani muscle

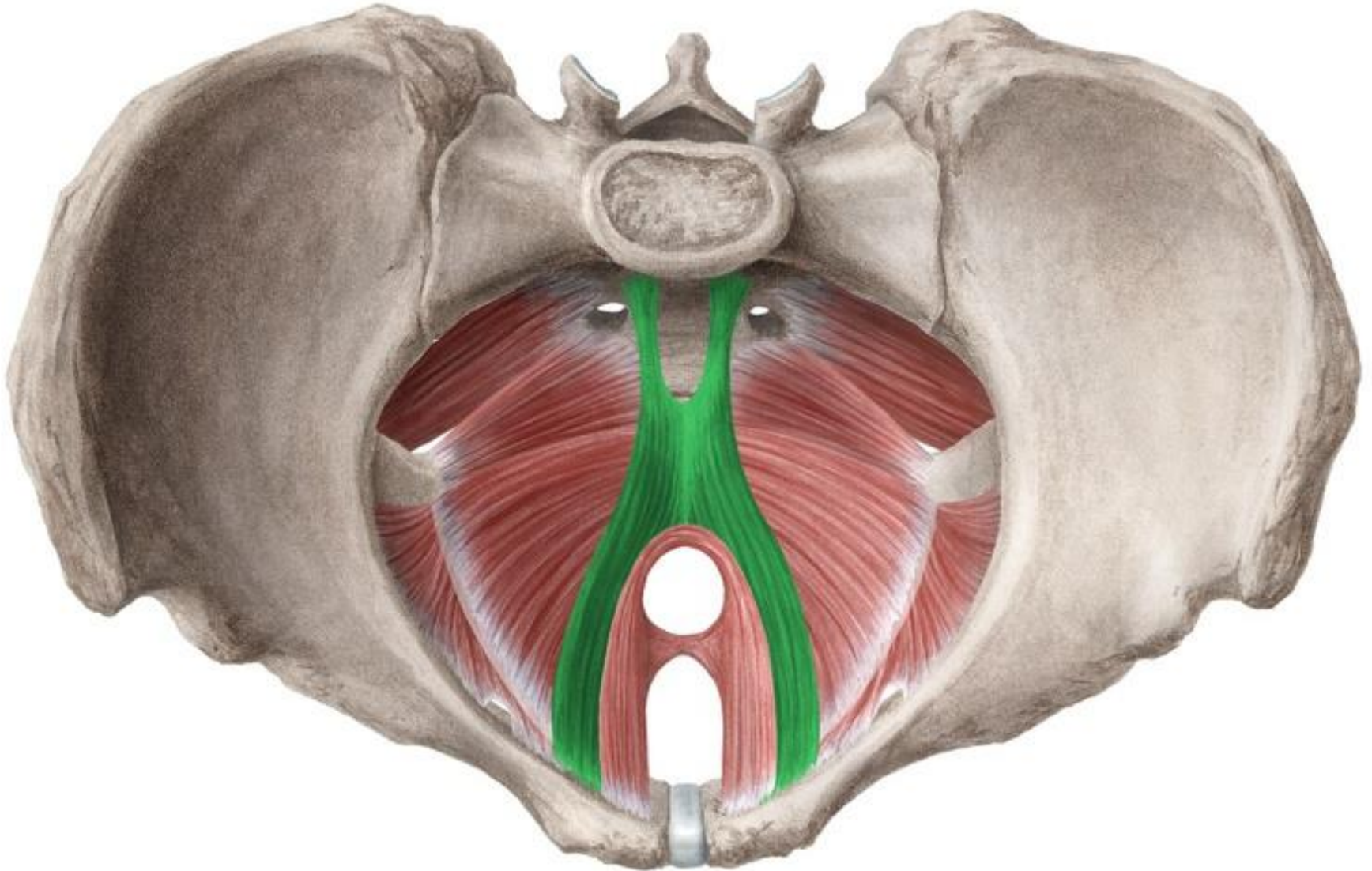


# Puborectalis muscle

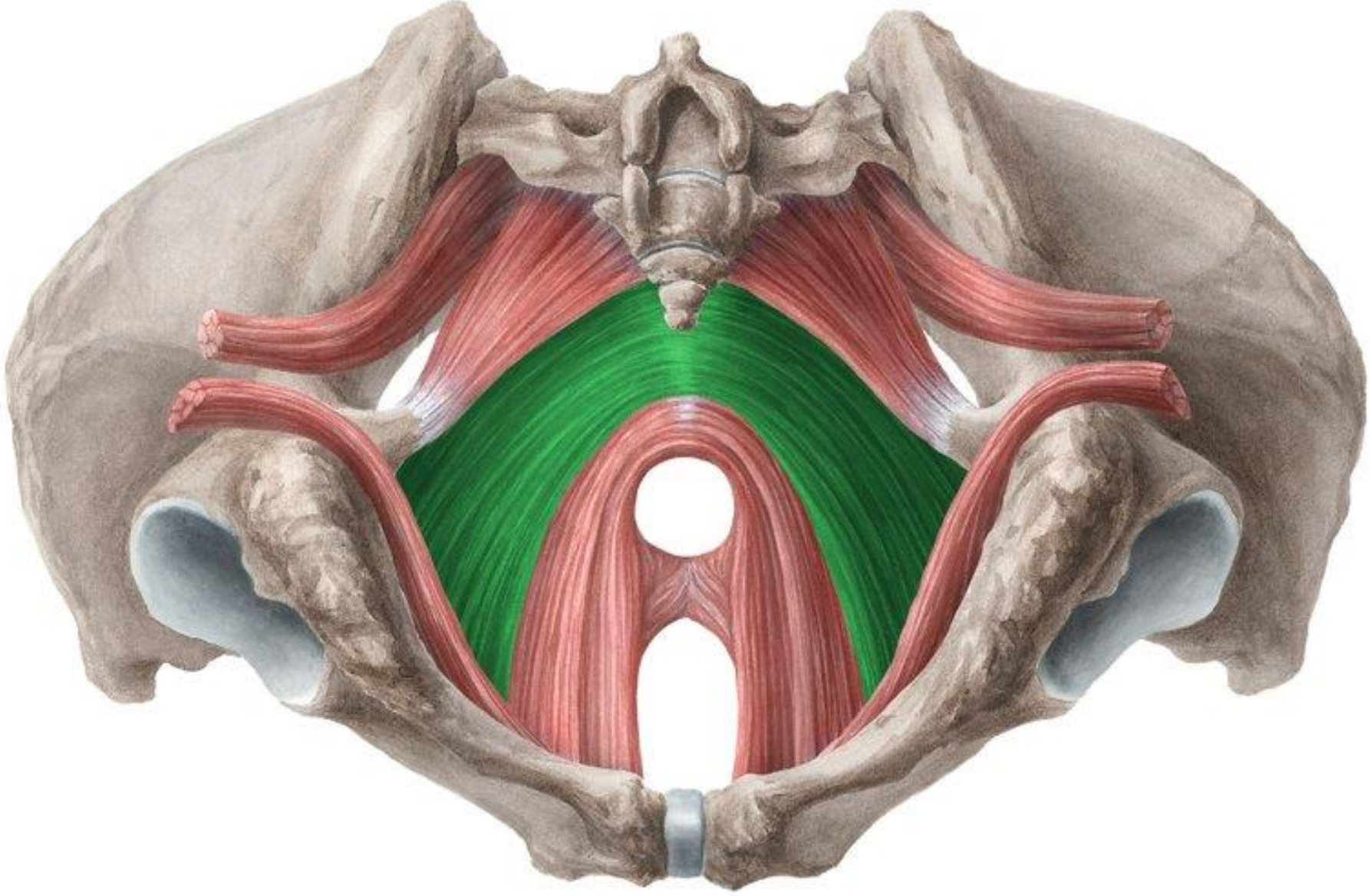




# Pubococcygeus muscle

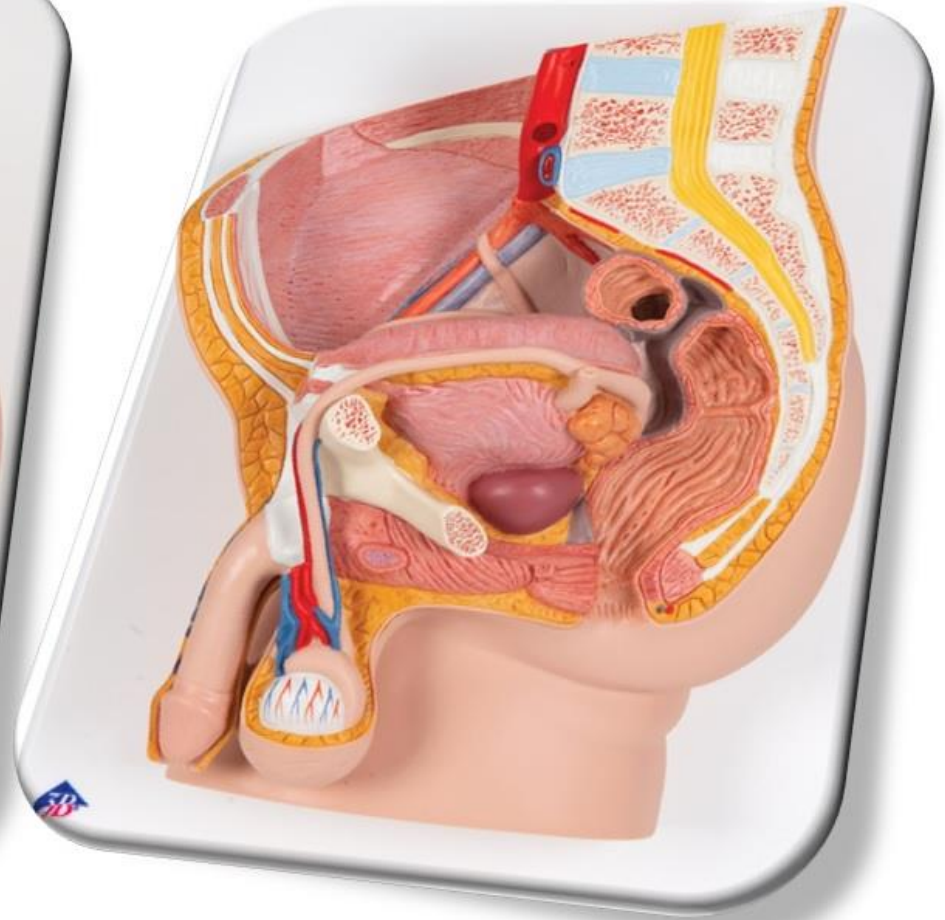
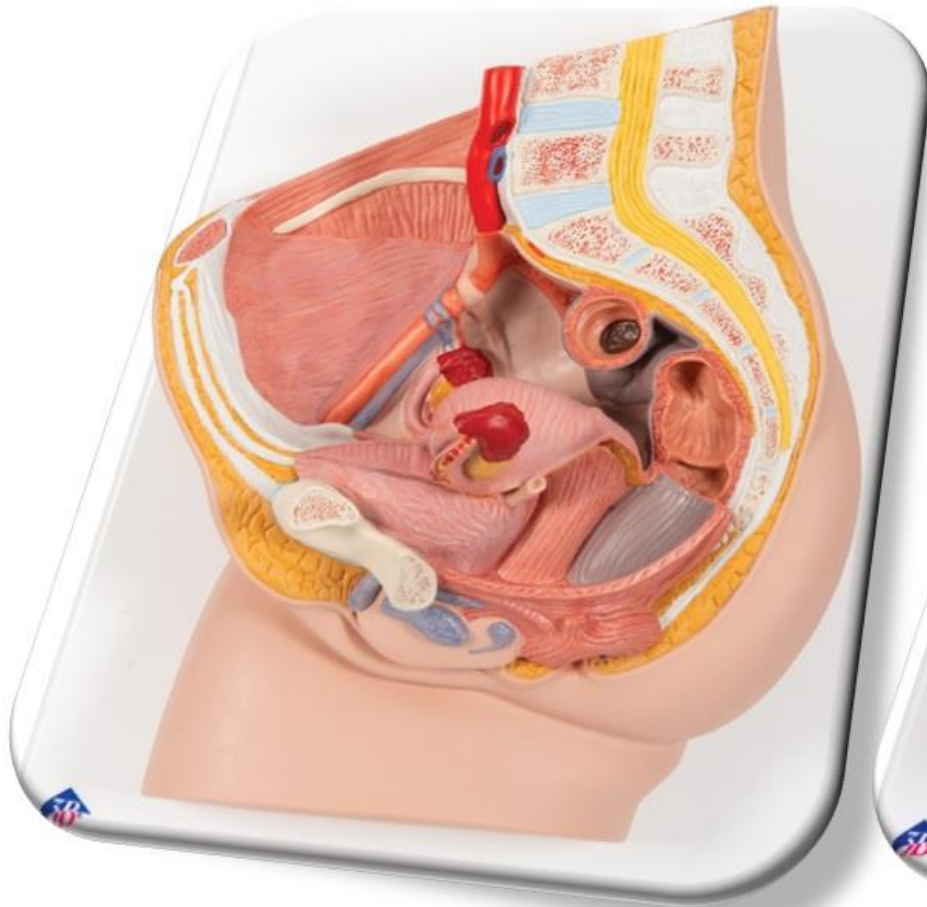


# Iliococcygeus muscle





# REPRODUCTIVE SYSTEMS



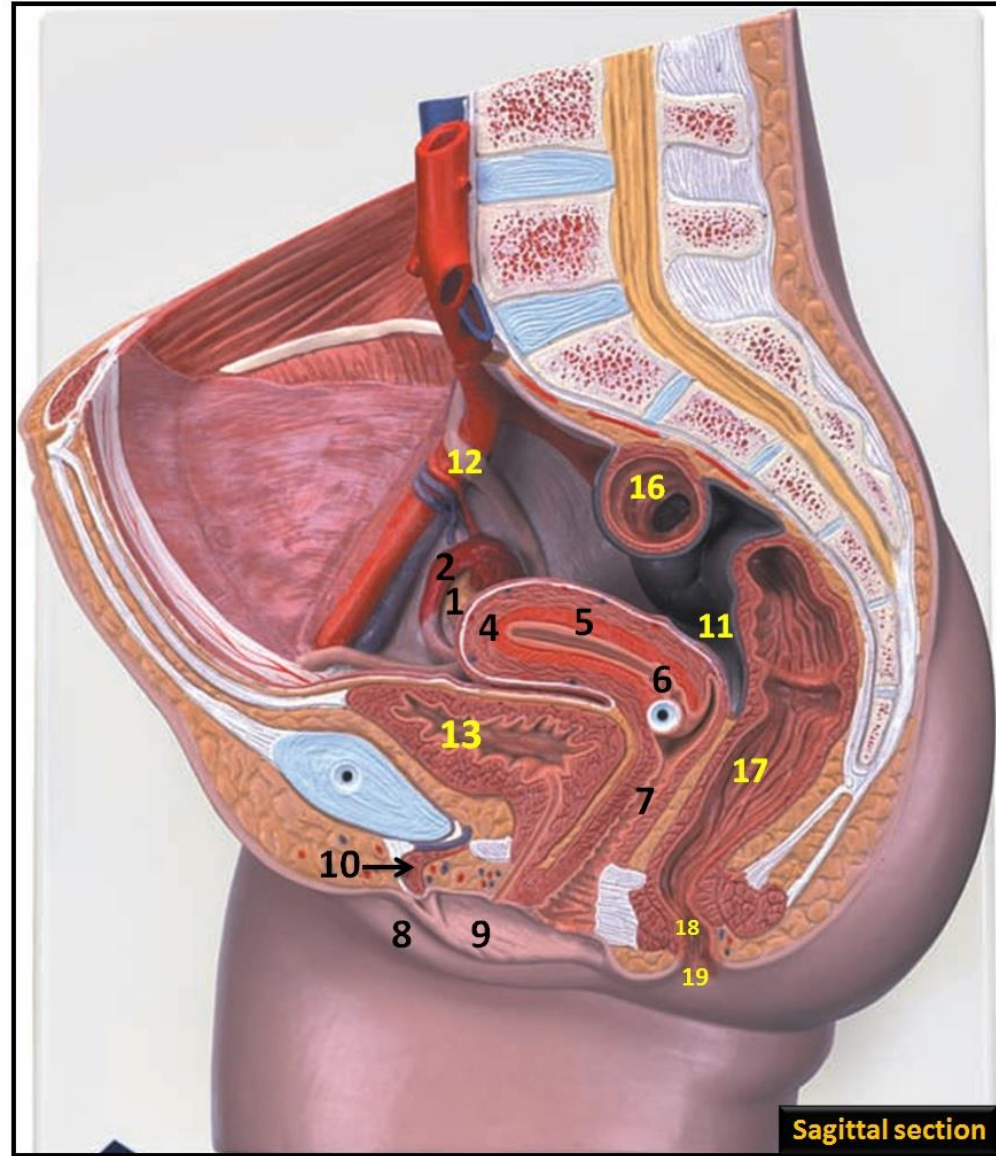
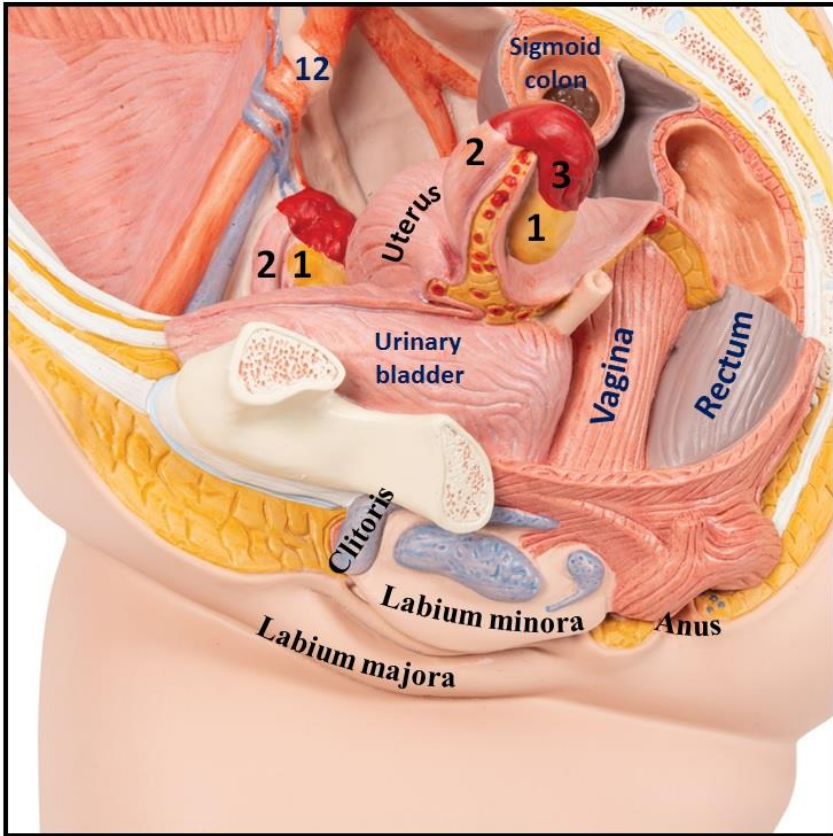
# Reproductive System

## Female

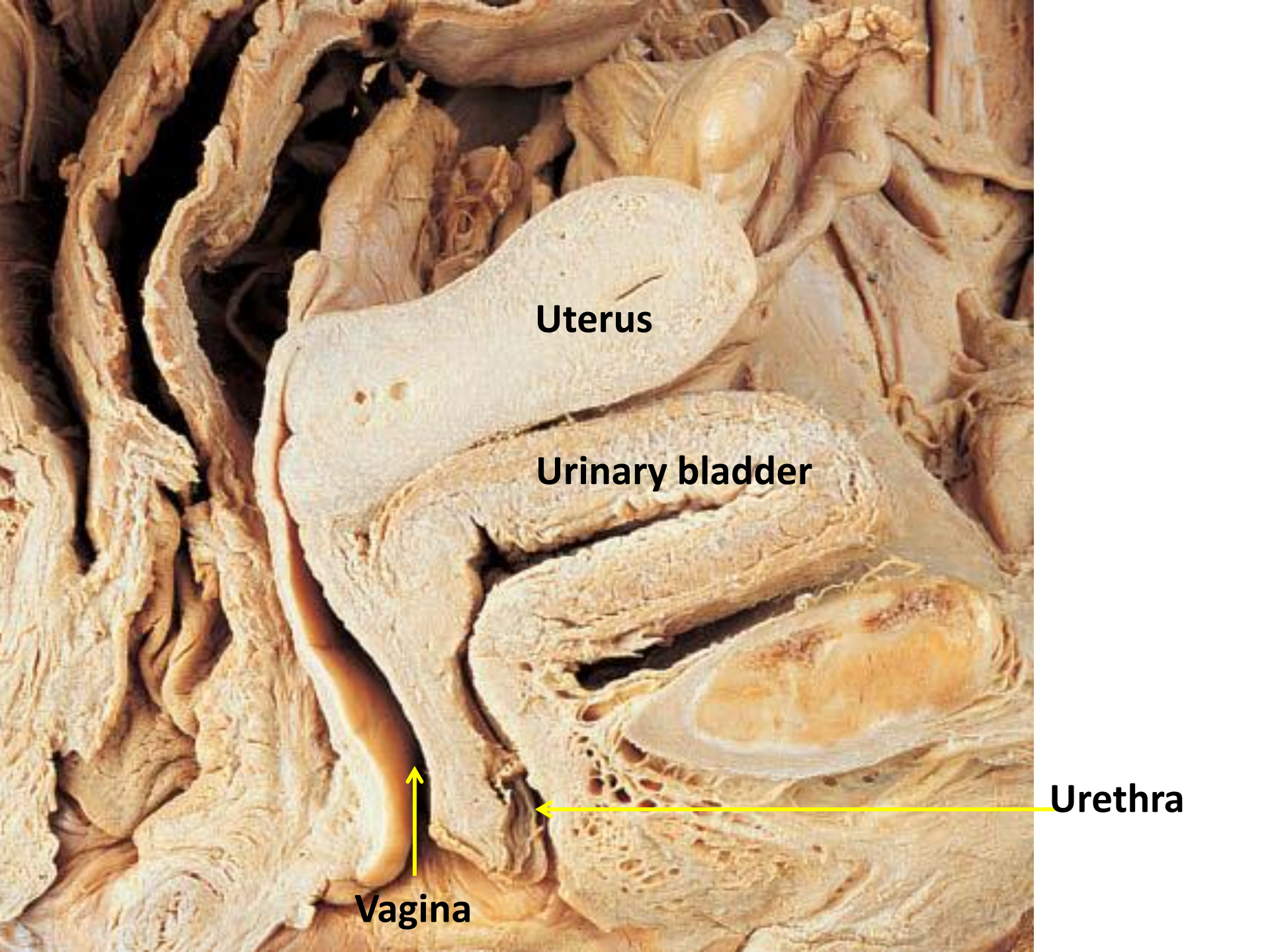
Female reproductive organs :	
	<b>Female gonads :</b>
<b>1</b>	➤ Ovaries
<b>2</b>	<b>Uterine tube (fallopian tube, oviduct) :</b>
<b>3</b>	➤ Fimbriae
	<b>Uterus :</b>
<b>4</b>	➤ Fundus of uterus
<b>5</b>	➤ Body of uterus
<b>6</b>	➤ Cervix
<b>7</b>	<b>Vagina</b>
	<b>External genitals :</b>
<b>8</b>	➤ Labium majora
<b>9</b>	➤ Labium minora
<b>10</b>	➤ Clitoris
<b>11</b>	<b>Rectouterine pouch ( pouch of Douglas )</b>
Urinary system :	
<b>12</b>	➤ Ureter
<b>13</b>	➤ Urinary bladder
<b>14</b>	➤ Urethra
<b>15</b>	➤ External urethral orifice
Digestive system :	
<b>16</b>	➤ Sigmoid colon
<b>17</b>	➤ Rectum
<b>18</b>	➤ Anal canal
<b>19</b>	➤ Anus
<b>20</b>	➤ External anal sphincter
<b>21</b>	➤ Internal anal sphincter



**Female organs of reproduction and surrounding structures**







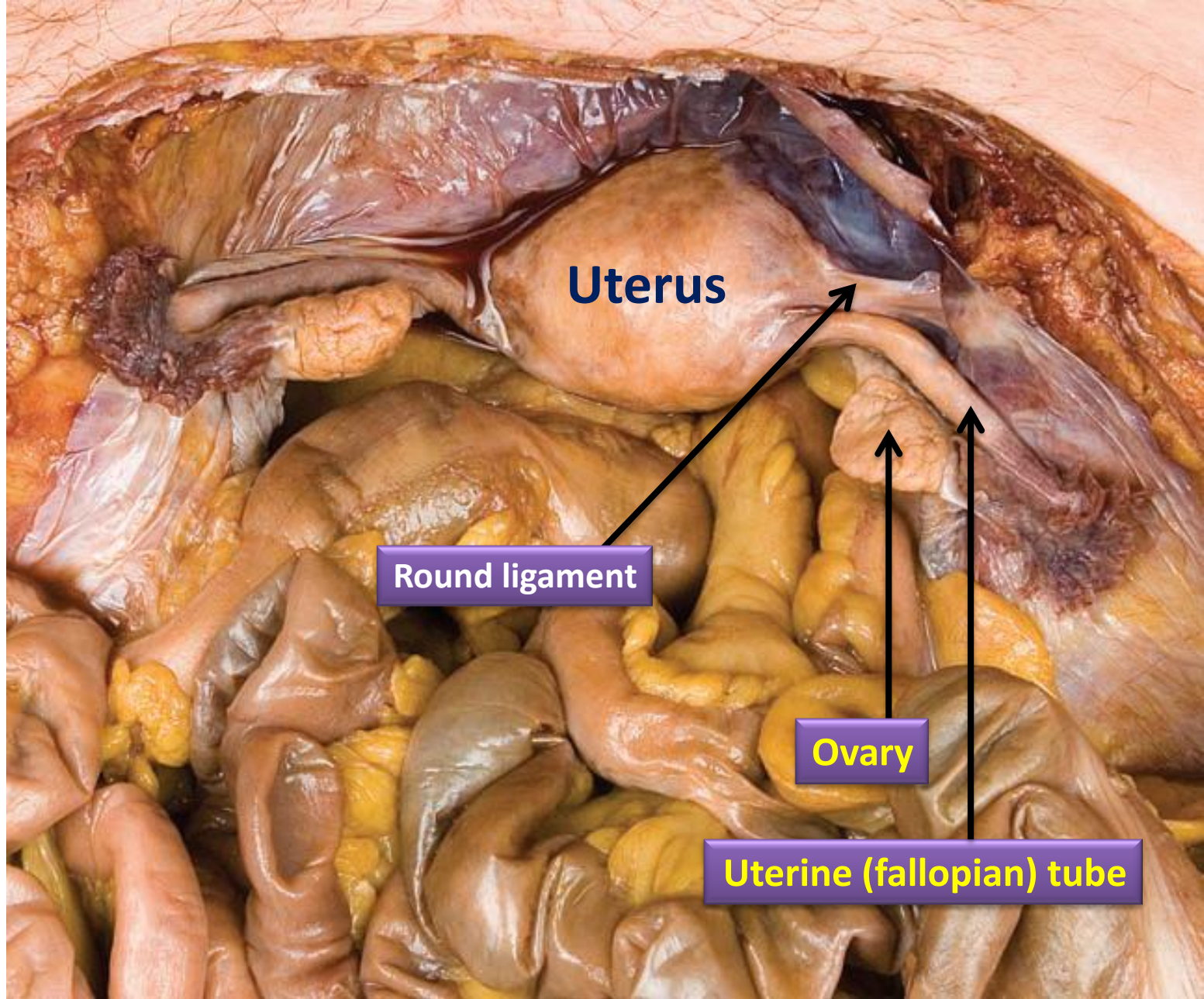
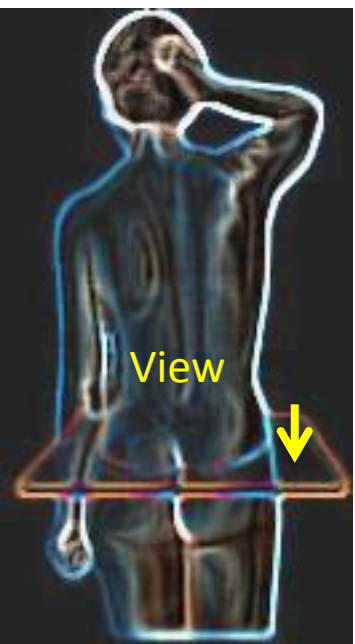
**Uterus**

**Urinary bladder**

**Vagina**

**Urethra**



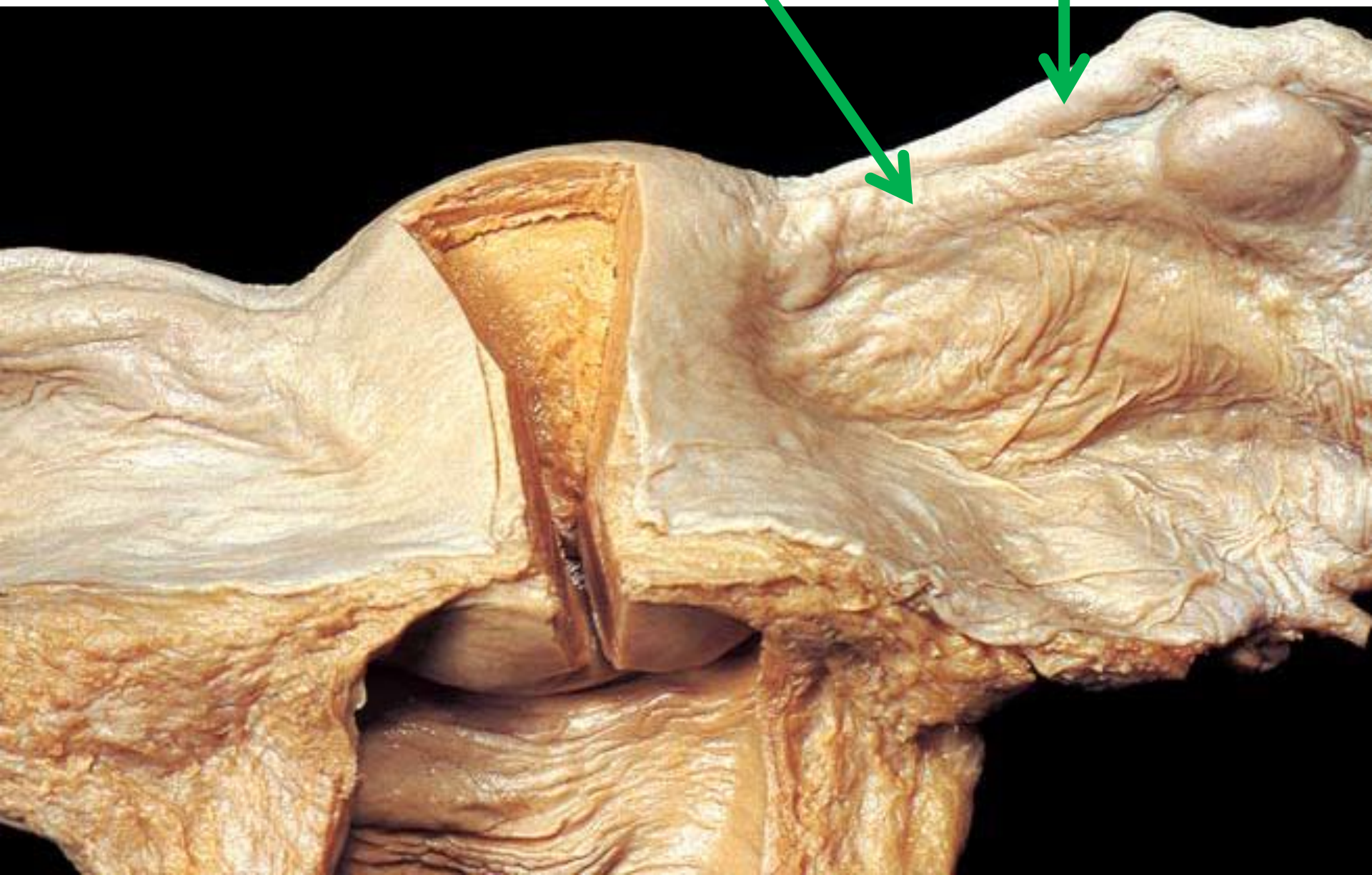


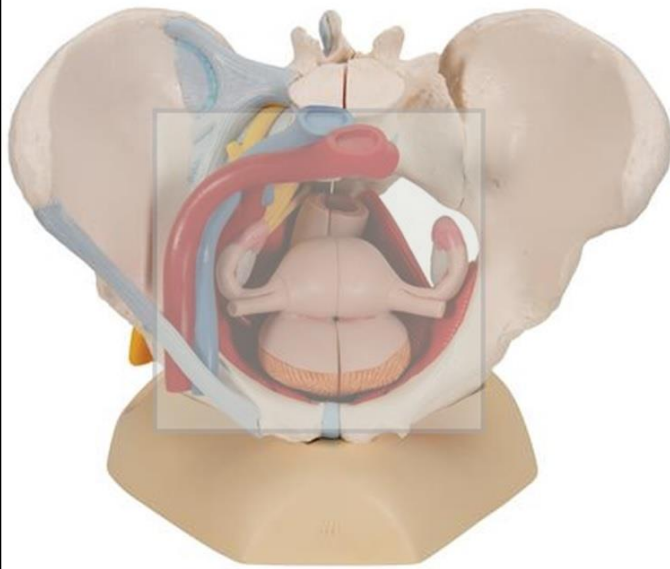
Anterosuperior view of transverse section



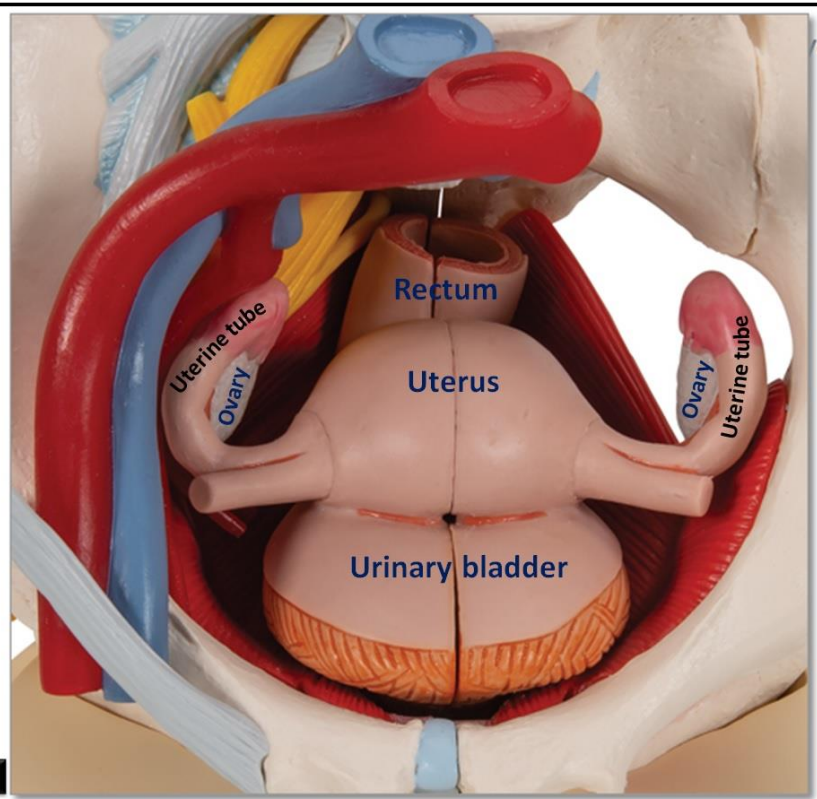
Ovarian ligament

Uterine (fallopian) tube

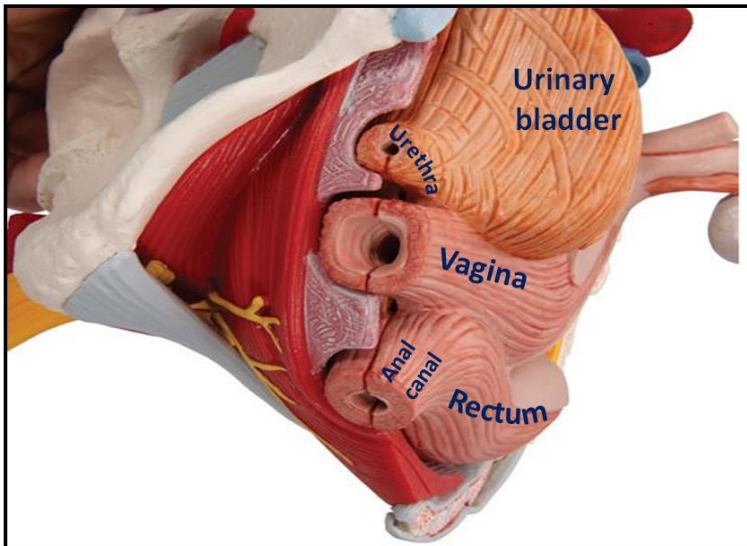




Female organs of reproduction and surrounding structures : superior view

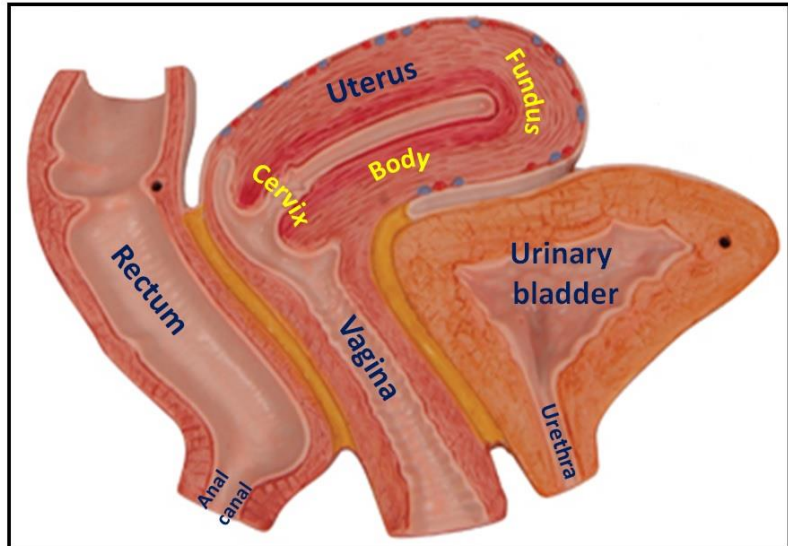


Rectum  
 Uterus  
 Urinary bladder  
 Uterine tube  
 Ovary



Urinary bladder  
 Urethra  
 Vagina  
 Anal canal  
 Rectum

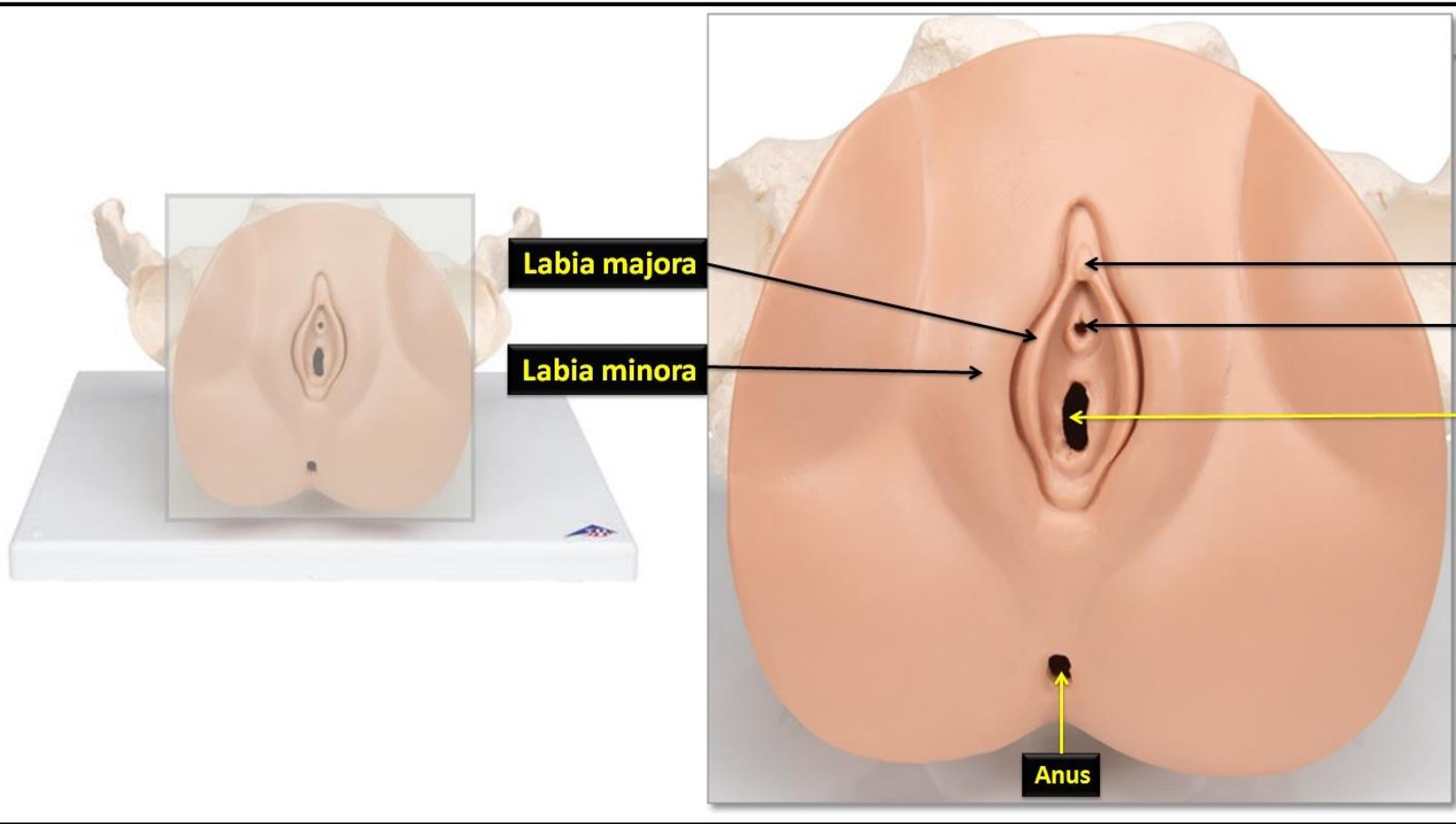
Female organs of reproduction and surrounding structures : inferior view



Uterus  
 Fundus  
 Body  
 Cervix  
 Rectum  
 Vagina  
 Urinary bladder  
 Urethra  
 Anal canal

Female organs of reproduction and surrounding structures : sagittal section





**Labia majora**

**Labia minora**

**Clitoris**

**External urethral orifice**

**Vaginal orifice**

**Anus**

**External genitalia of the female : inferior view**



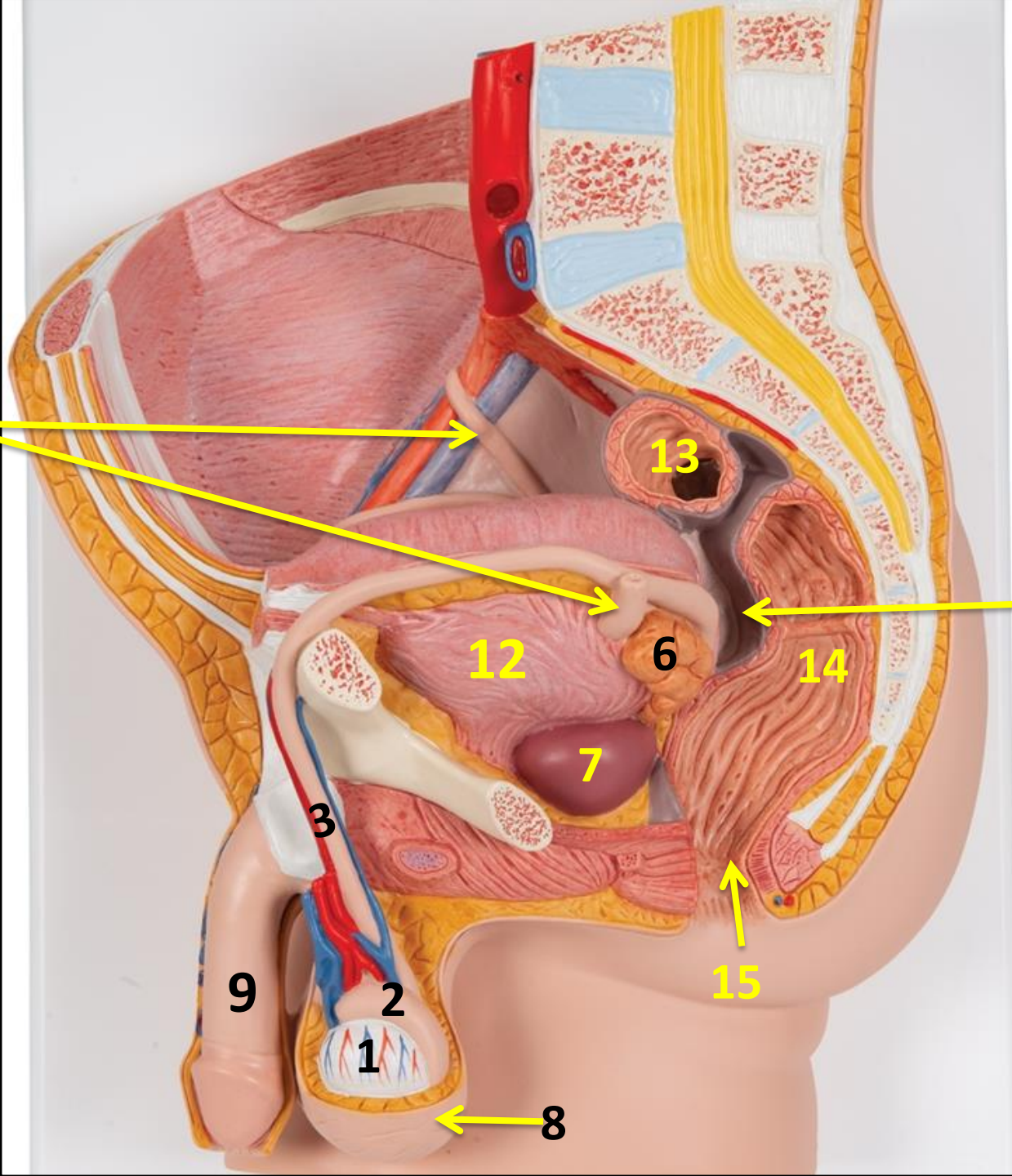
# Reproductive System

## Male

Male reproductive organs :	
	<b>Male gonads :</b>
1	➤ Testes
	<b>Ducts :</b>
2	➤ Epididymis
3	➤ Vas deferens ( Ductus deferens)
4	➤ Ejaculatory ducts
5	➤ Urethra
	<b>Accessory sex glands :</b>
6	➤ Seminal vesicles
7	➤ Prostate
	<b>Supporting structures :</b>
8	➤ Scrotum
9	➤ Penis
10	<b>Vesicorectal pouch</b>
Urinary system :	
11	➤ Ureter
12	➤ Urinary bladder
	➤ Urethra
Digestive system :	
13	➤ Sigmoid colon
14	➤ Rectum
15	➤ Anal canal
16	➤ Anus
17	➤ External anal sphincter
18	➤ Internal anal sphincter

11

10



9

2

1

8

3

7

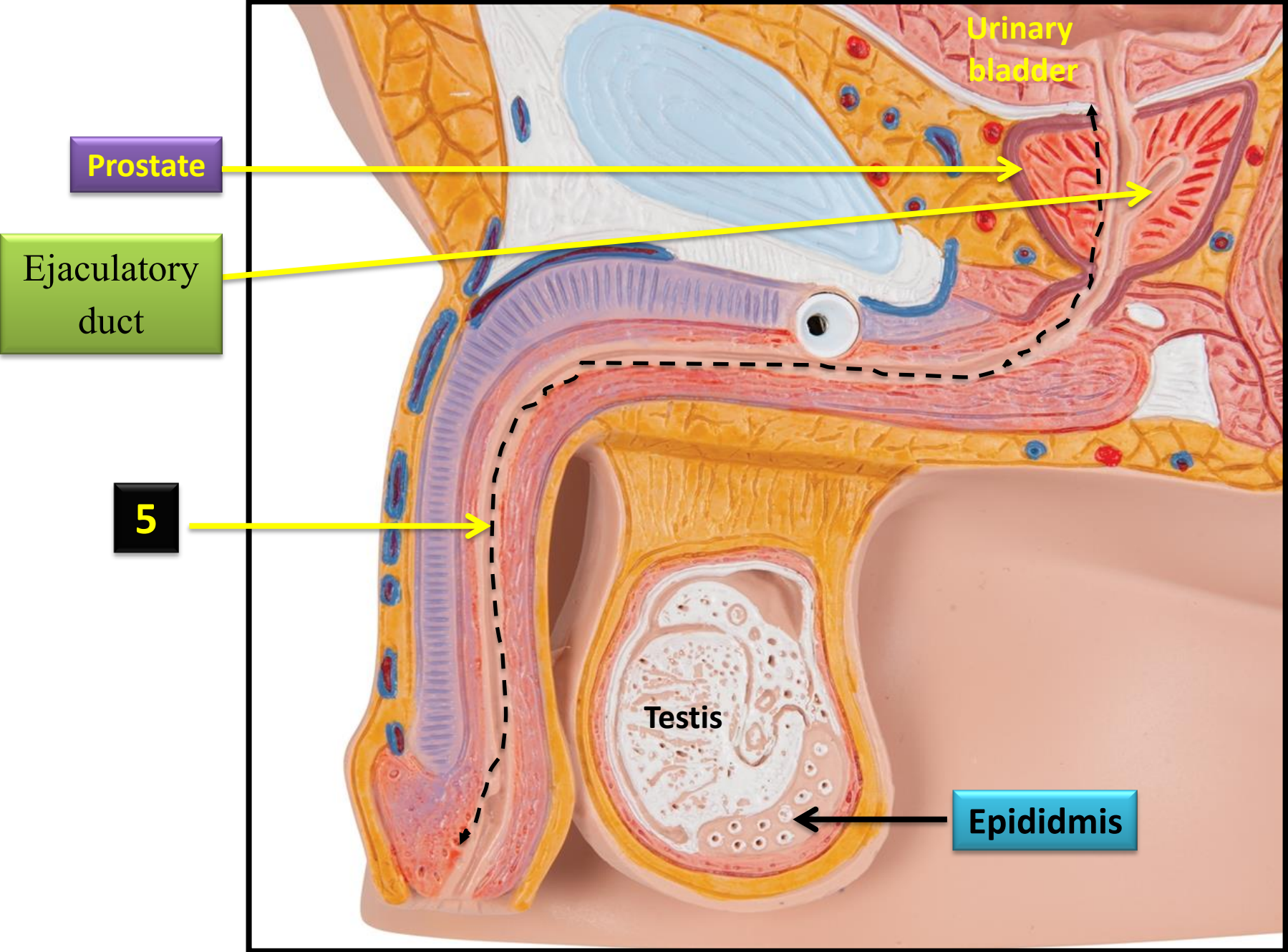
6

12

14

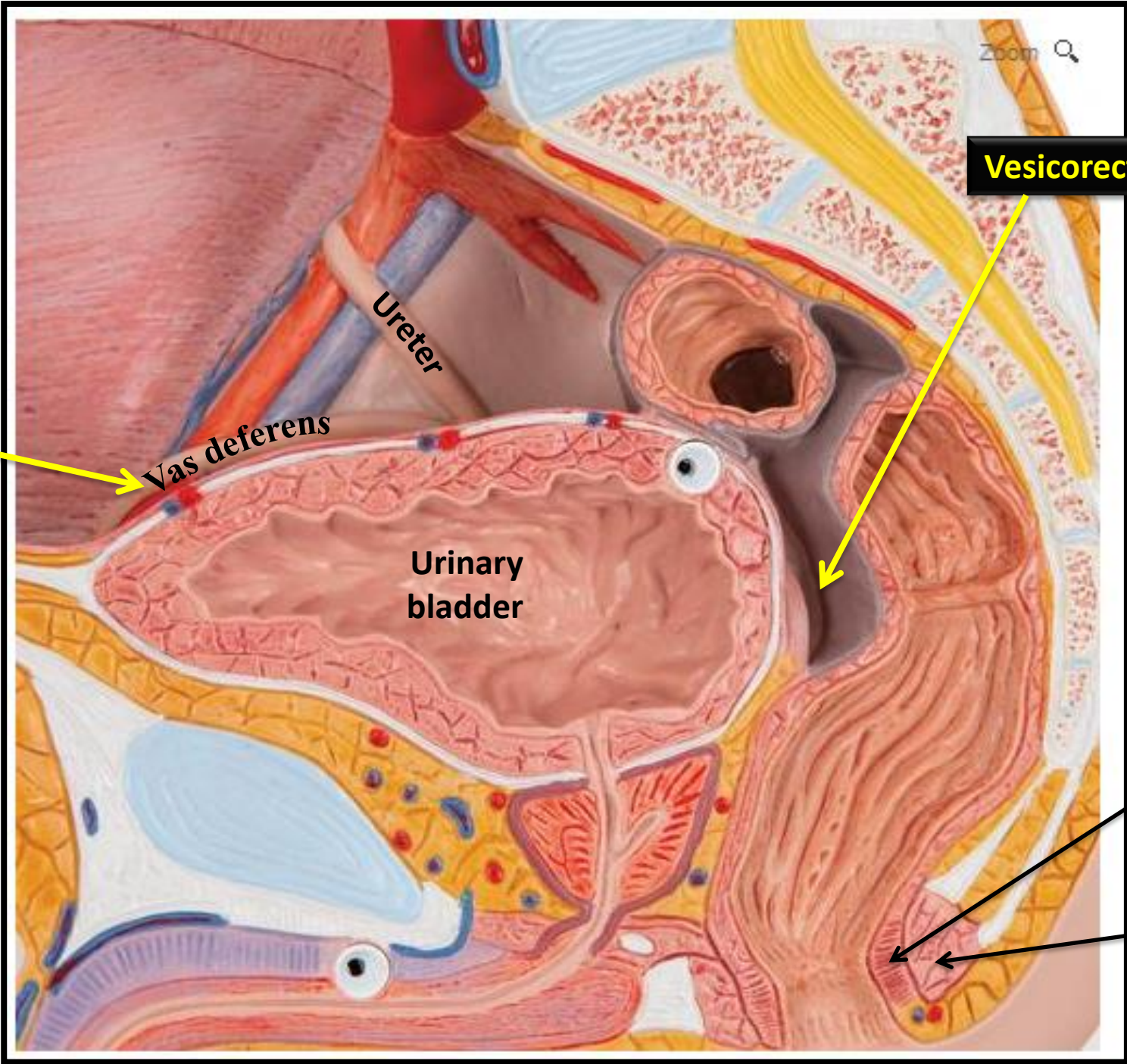
13

15



Male organs of reproduction and surrounding structures





**Ductus (vas) deferens**

**Vas deferens**

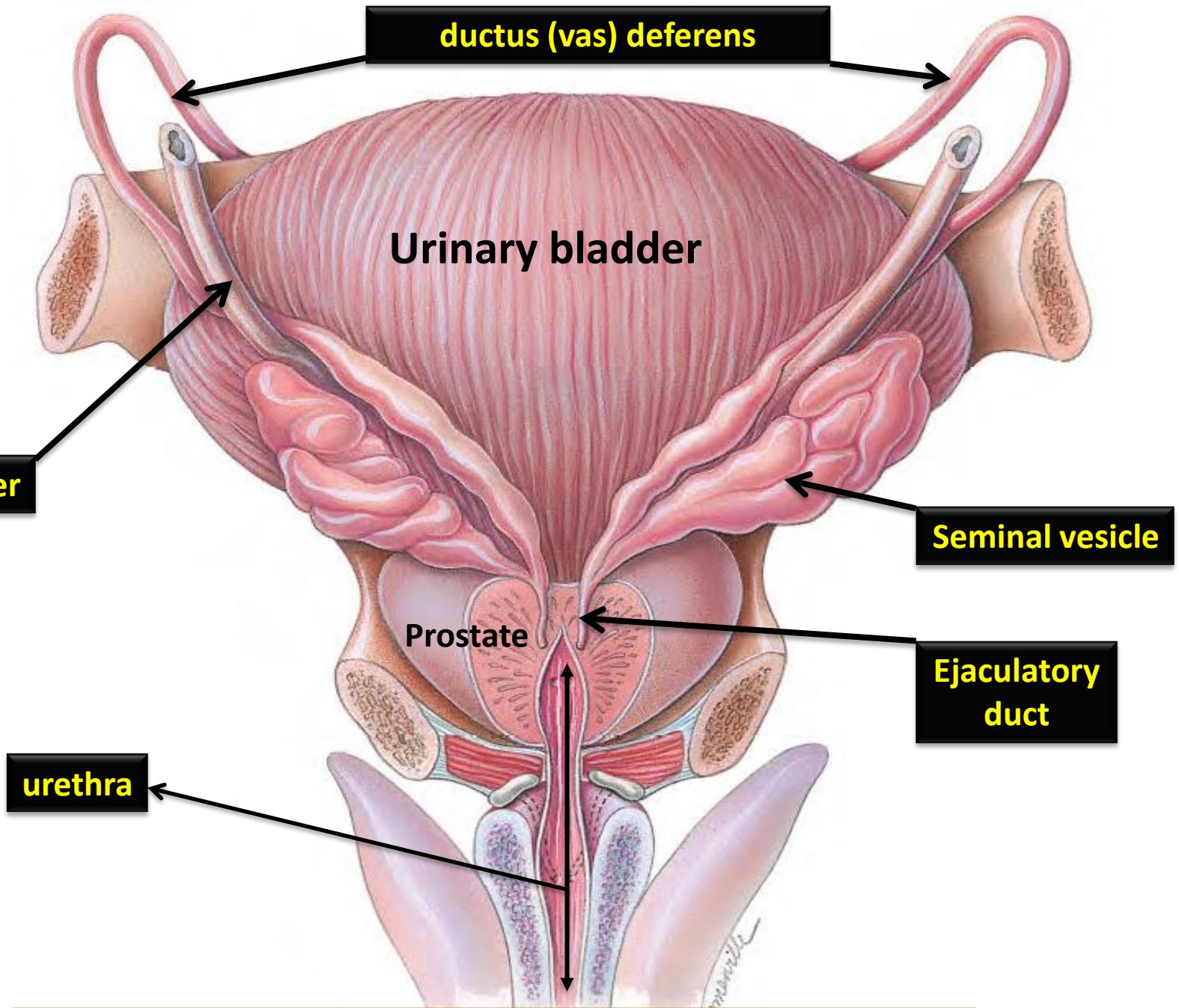
**Ureter**

**Urinary bladder**

**Vesicorectal pouch**

**18**

**17**



**ductus (vas) deferens**

**Urinary bladder**

**Ureter**

**Seminal vesicle**

**Prostate**

**Ejaculatory duct**

**urethra**

**Posterior view of male accessory organs of reproduction**



Left ureter

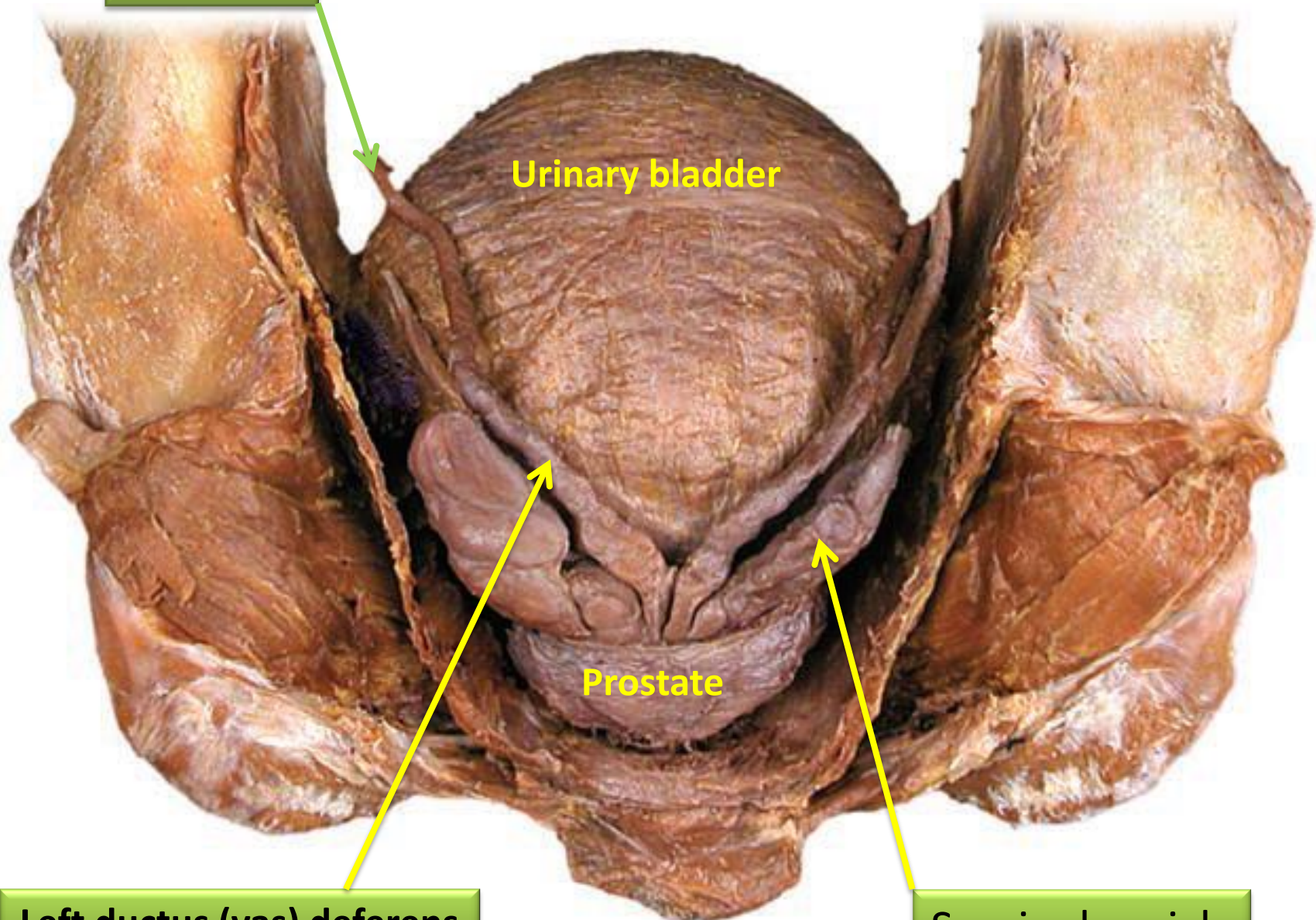
Urinary bladder

Prostate

Left ductus (vas) deferens

Seminal vesicle

Posterior view of male accessory organs of reproduction





# PERINEUM

## In women

Greater vestibular gland

Bulb of vestibule

Crus of clitoris

Glans clitoris

### **Muscles :**

➤ Bulbospongiosus muscle

➤ Ischiocavernosus muscle

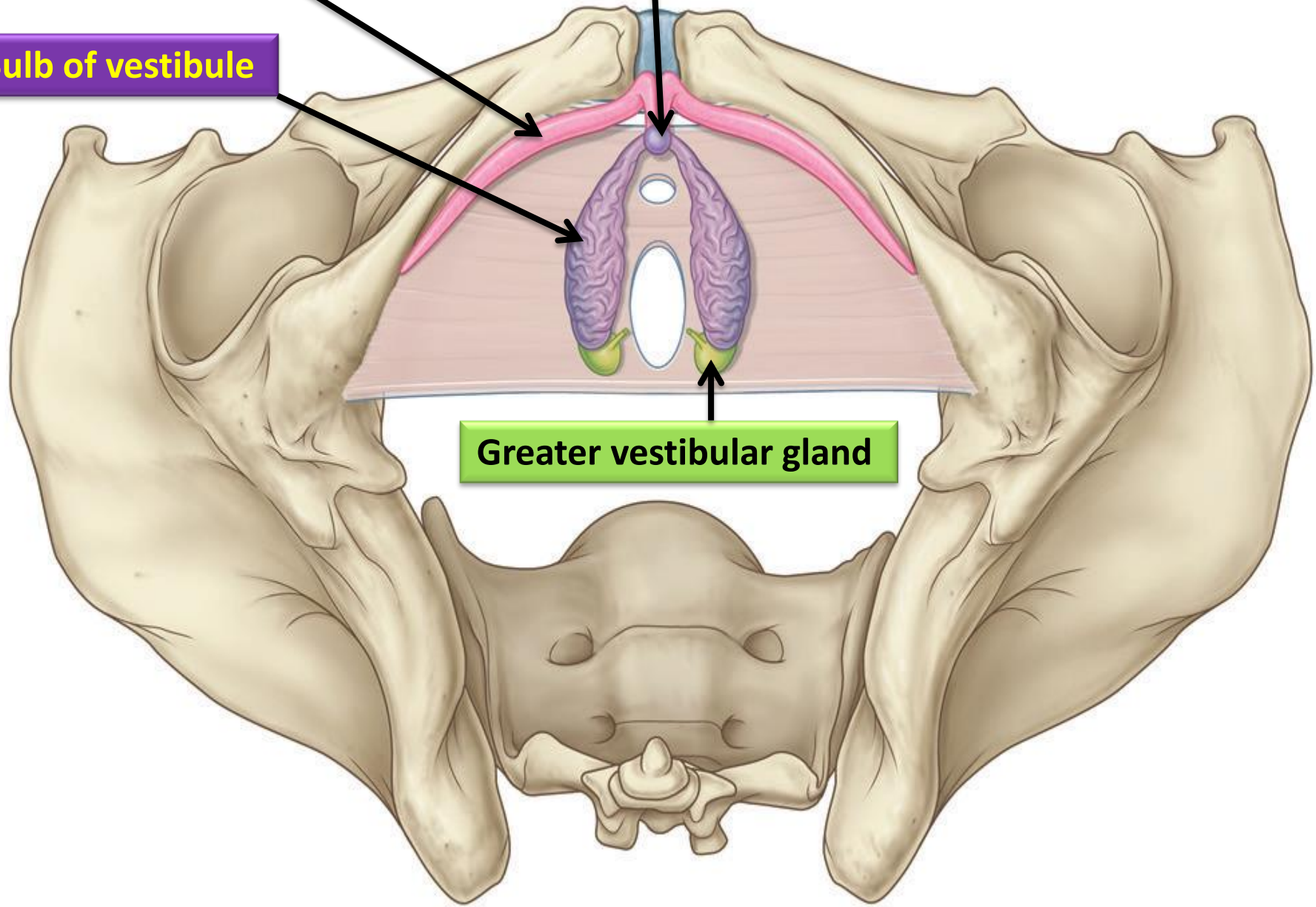
➤ Superficial transverse perineal muscle

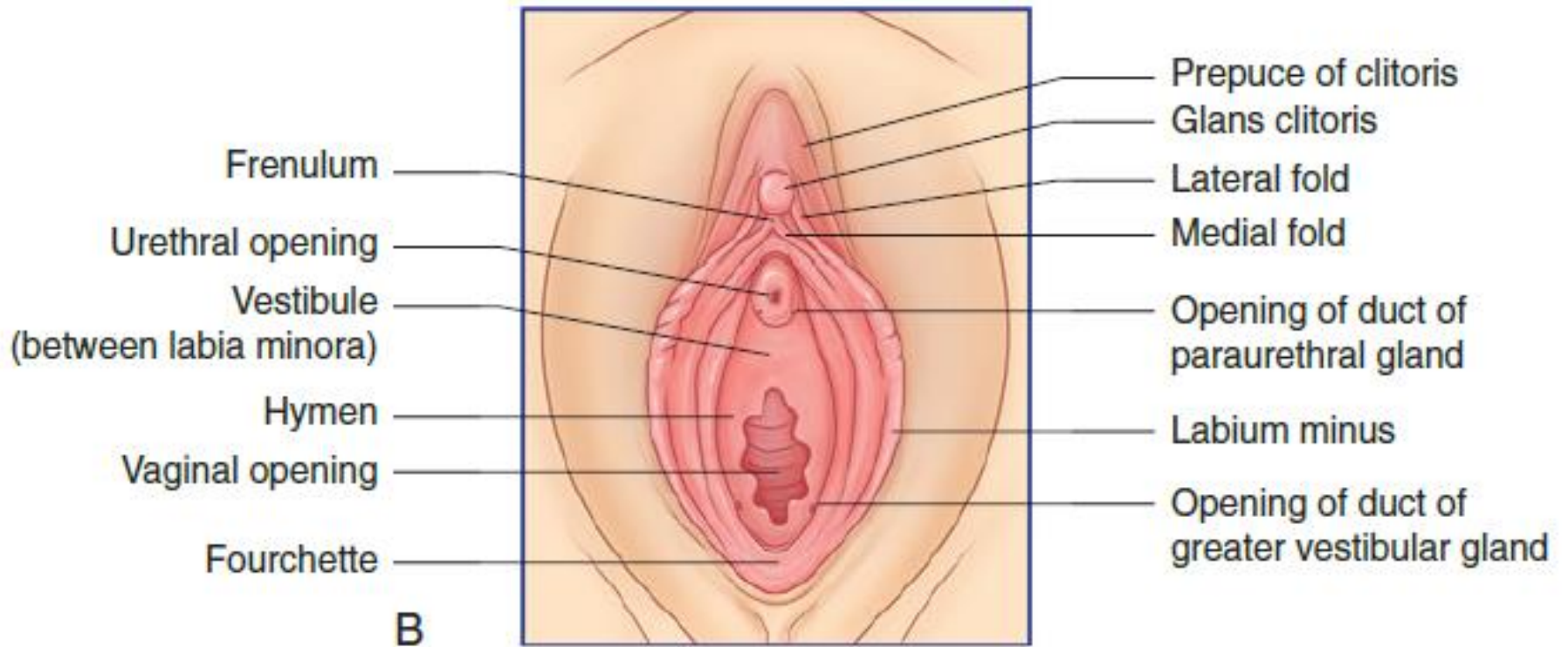
**Crus of clitoris**

**Glans clitoris**

**Bulb of vestibule**

**Greater vestibular gland**







# PERINEUM

## In men

Bulbo-urethral gland

Bulb of penis

Crus of penis

Body of penis :

➤ Corpora cavernosa

➤ Corpus spongiosum

Glans penis

### **Muscles :**

➤ Bulbospongiosus muscle

➤ Ischiocavernosus muscle

➤ Superficial transverse perineal muscle

Corpora cavernosa

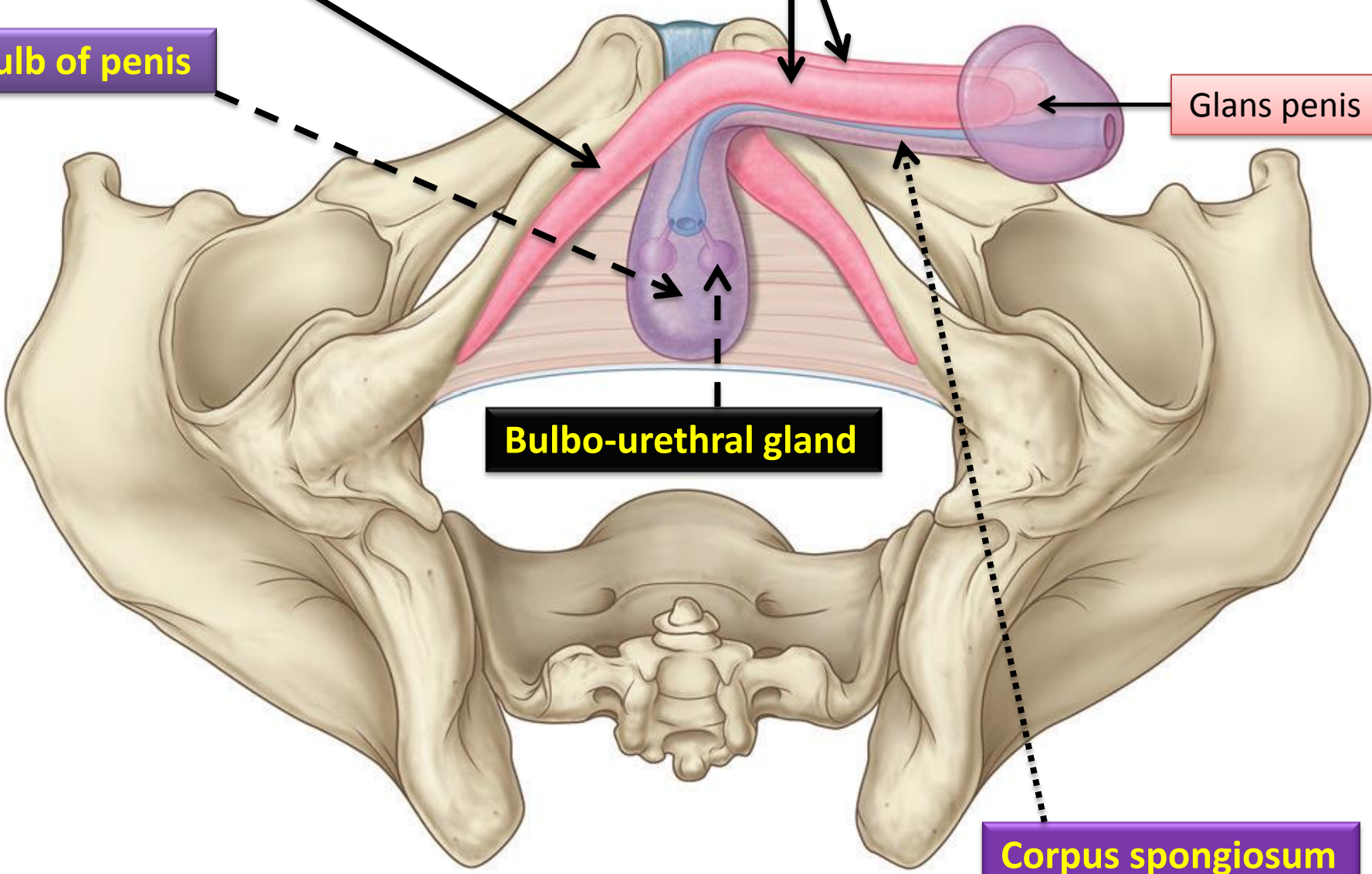
Crus of penis

Bulb of penis

Glans penis

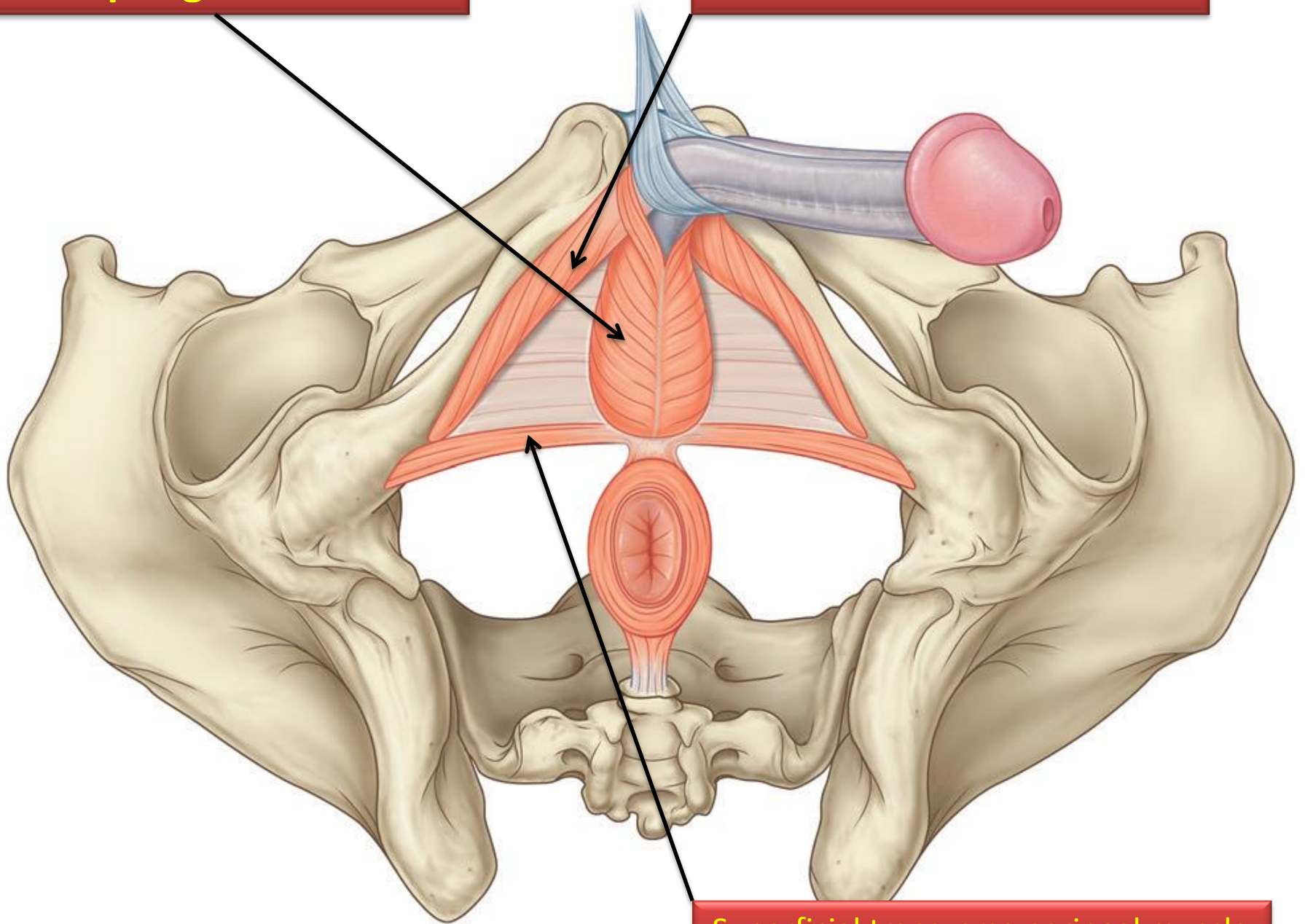
Bulbo-urethral gland

Corpus spongiosum



**Bulbospongiosus muscle**

**Ischiocavernosus muscle**

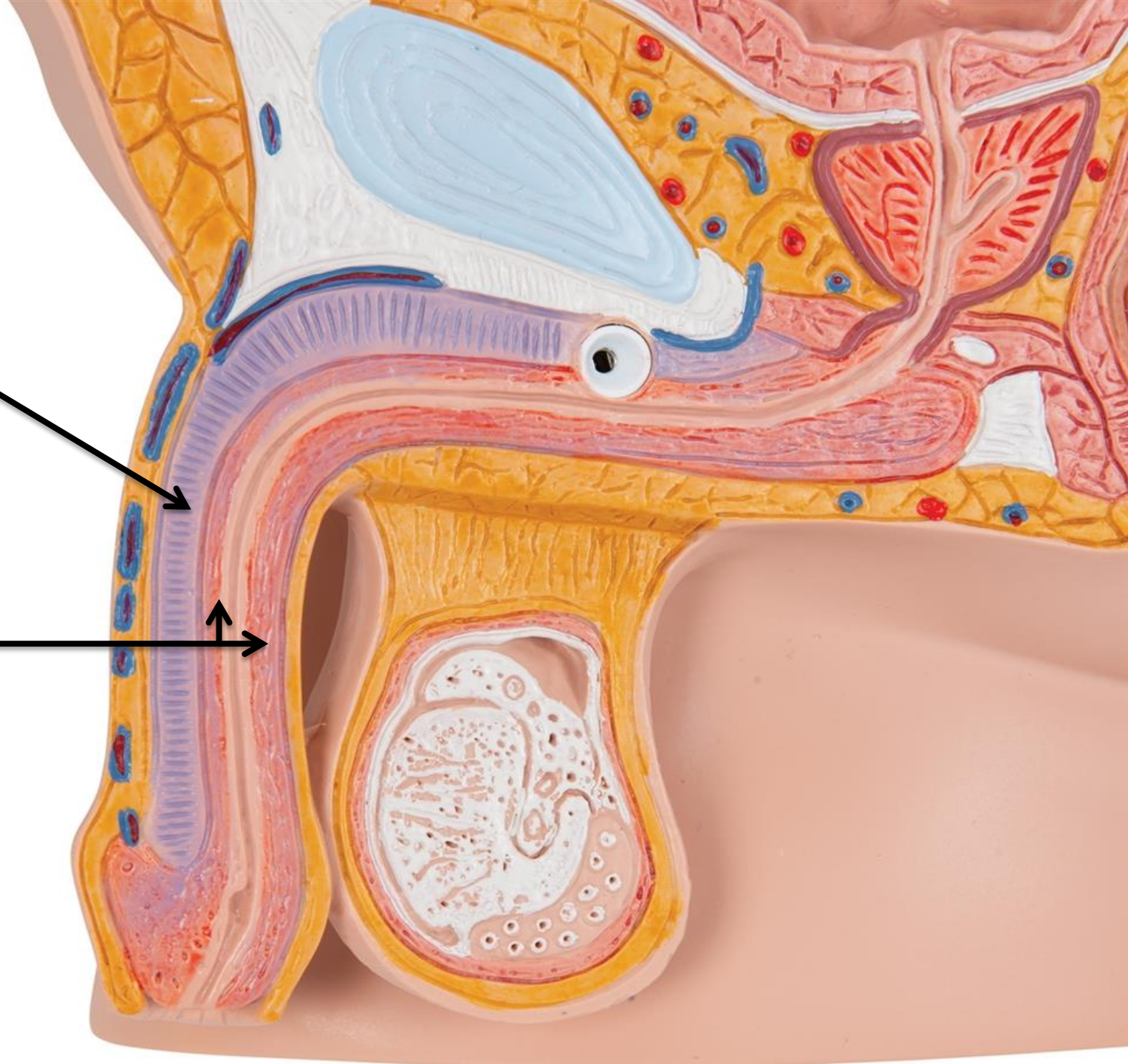


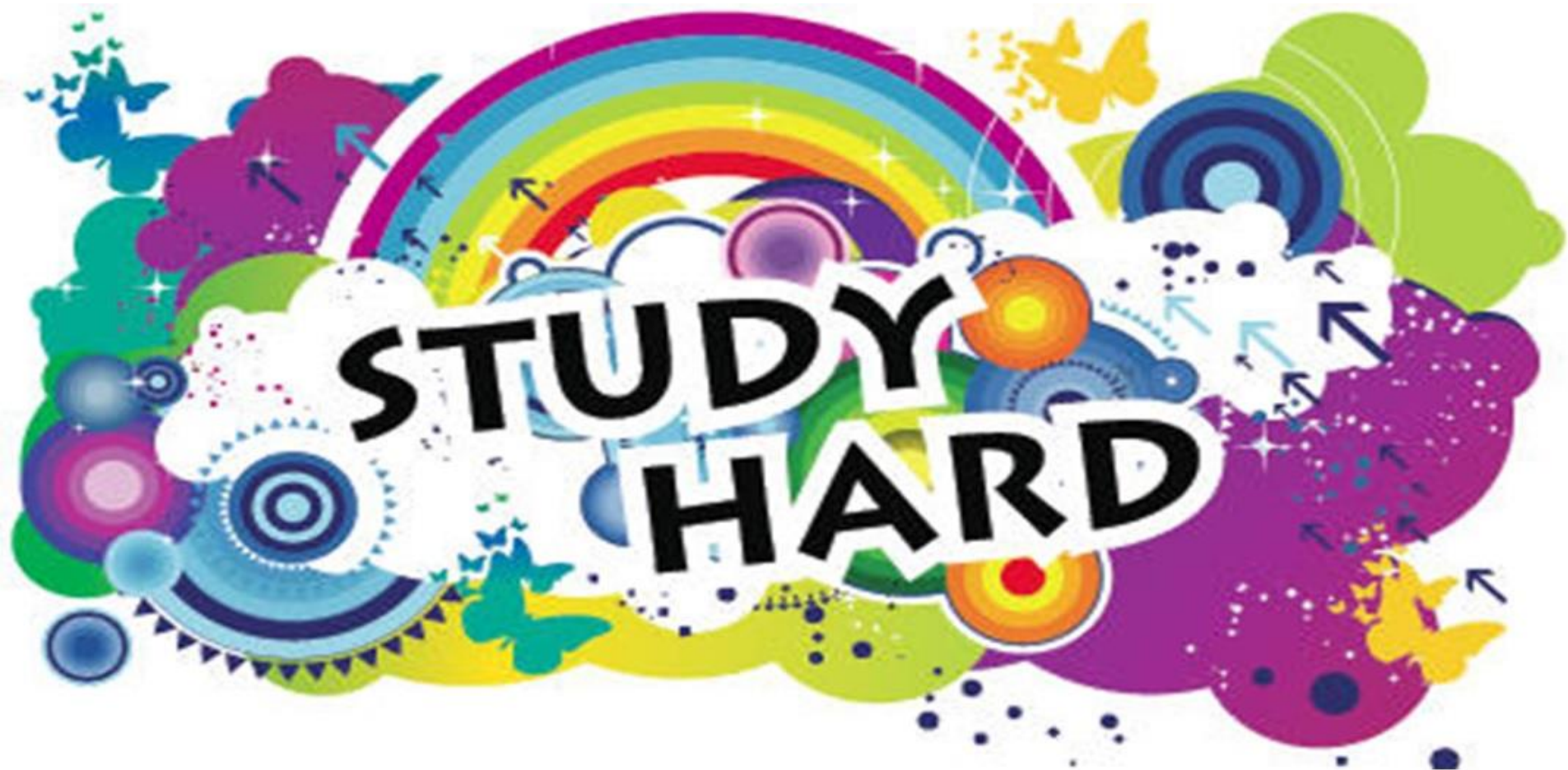
**Superficial transverse perineal muscle**



Corpus spongiosum

corpus cavernosum





GOOD LUCK