

Peripheral Nervous System (PNS) Mid Exam

Adrenaline Batch

29/3/2018

87 Q

Done by:

Al-Motasem Khamees

Yasmin Alna'awashi

Pathology (7 Q)

1- The False statement about CNS tumors is :

- A- rarely spread
- B- no premalignant stage.
- C- WHO grading system important for Rx,Px
- D- low grade can be transformed to high grade.
- E- all of the above are true

****Answer: E*

2- Microscopic picture of palisading necrosis and microvascular proliferation seen mainly in :

Answer: GBM grade 4.

3- Rosette and pseudorosette seen in :

Answer: ependymoma.

4- About Alzheimer's disease :

Answer: main abnormality is accumulation of AB amyloid .

5- About Frontotemporal dementia, the false statement is :

Answer: AB amyloid deposition.

6- Huntington's patients presented mainly with :

Answer: choreiform and dementia.

7- Disease usually seen in overcorrection of hyponatremia is similar to :

Answer: Multiple Sclerosis

(note: not leukodystrophies)

Physiology (16 Q)

8- The highest refractive power in the eye is in :

Answer: Cornea

9- All are increased during exposure to light except :

A- Entrance of Na to outer segment of rods.

B- Increase transducin

C- Increase cGMP phosphodiesterase.

****Answer: A*

10- The interneural cell that prevent lateral spread of light are :

Answer: horizontal cells.

11- The interneural cells that aids in beginning of vision analysis are :

Answer: Amacrine cells.

12- About saccadic eye movements :

Answer: it is also called opticokinetic movement .

13- Direction of sound determined by :

Answer: superior olivary nucleus.

14- Position of high frequency sound in regarded to basilar membrane is :

A- at oval/ round window.

B- Helicotrema.

C- Pyramid .

****Answer: A*

15- If semicircular ducts rotate clockwise so, endolymph rotate :

A- with endolyphaticus

B- clockwise.

C- counterclockwise.

**** Answer: C*

16- Taste receptor is :

A- chemoreceptor

B- synonyms with taste bud.

****Answer: A*

17- Muscle spindle innervated by :

Answer: gamma motor neuron

18- Fast nerve conduction is :

A- A delta

B- A beta

C- A gamma

D- C fiber

E- unmyelinated fiber.

****Answer: B*

19- Muscle spindle is important in:

Answer: muscle stretch reflex.

20- All are seen in LMNL except :

A- Spastic paralysis

B- Fasciculation

C- Denervation super sensitivity.

****Answer: A*

21- Nerves that arise from gray matter of spinal cord are :

Answer: postganglion sympathetic nerve.

22- True about parasympathetic actions :

Answer: wall of urinary bladder is constricted while sphincter is relaxed.

23- First order neuron from sweet taste receptor will go to :

Answer: solitarius nucleus .

Microbiology (8 Q)

24- About M.leprae all are true except :

A- Obligate extracellular

B- Has mycoside

C- Acid fast bacilli

D- Can't grow on artificial medium

*****Answer: A**

25- Case of 10 months baby with encephalitis , The cause is :

Answer: Westren equine encephalitis.

26- About Tubercoid form of leprosy, all are true except :

A- usually positive lepromin test

B- highly contagious

C- few M.O

*****Answer: B**

27- About clostridium :

A- botulinum toxin can inhibit release of Ach.

B- botulism develops symmetric descending paralysis.

C- active vaccine available prior intoxication

D- tetani cause spasticity

E- opisthotonos and trismus are manifestation of tetanus.

****Answer: C*

28- False about Zika virus :

Answer: no vaccine available

29- False about difference between Ixodidae and argasidae is :

Answer: no scutum in Ixodidae .

30- False about enterovirus :

Answer: antibodies that are detected in the blood seen in all period of illness.

31- about poliovirus ,the false statement is :

A- Salk vaccine used mainly in Jordan

B- IP 7_14 days

C- may cause abortive polio myelitis , also aseptic meningitis.

****Answer: A*

Pharmacology (12 Q)

32- Case about baby need nasopharyngeal surgery .The correct topical anesthetic for mucus membrane with vasoconstriction is :

Answer: cocaine.

33- about anesthetic, false is :

Answer: common S/E are taccycardia and hypertension.

34- Benzotropin as an antimuscarinc drug used in parkinson for :

A- bradykinesia

B- akinesia

C- tremor

****Answer: C*

35- All are correct about Parkinson treatment except :

A- Add pramipexole to levedopo. it is alternative on the same receptor

B- MAO is first treatment.

C- entacapon used for increase duration of action.

****Answer: A*

36- all are true about action of atropine except :

Answer: miosis.

37- mismatch about antidote for each following drugs :

A- dobutamine : metoprolol.

B- dopamine : prazosin

****Answer: B*

38- false is :

Answer: pramipexole is dopamine antagonist.

39- All are used for nasal decongestant except :

A- Oxymetazoline

B- Amphetamine

C- Ephedrine

****Answer: B*

40- False about difference between Norepinephrine and epinephrine :

Answer: NE for acute asthmatic attack.

41-All are used for hypertension except :

A- phenoxybenzamine

B- prazosin

C- metoprolol

*****Answer: A**

42- Propranolol is contraindicated in :

A- Glaucoma

B- Hypertension

C- Angina

D- COPD

*****Answer: D**

43- False about side effect of propranolol :

A- Hyperglycemia

B- Sexual impairment

C- up regulation can worsen angina

*****Answer: A**

Anatomy (21 Q)

44- The lateral margin of the eye contains :

A- zygomatic bone

B- frontal bone

C- greater wing of sphenoid.

****Answer: A (B is also true)*

45- Infraorbital canal is found in :

Answer: orbital palat of maxilla.

46- Posterior ethmoidal nerve innervates :

Answer: sphenoidal sinuis.

47- All are false about oculomotor except :

A- Elevate, depressed and abduct eyeball

B- Passes between posterior and superior cerebellar artery

C- Innervate levator palpebrae muscle

****Answer: C*

48- The nerve that lies along lateral rectus muscle is :

Answer: lacrimal nerve.

49- Ciliary striae is :

A- Deep grooves in the ring of ciliary body

B- Shallow grooves in the ring of ciliary body

C- Posterior part of ciliary body.

D- Anterior part of ciliary body

E- Two answers are correct

****Answer: B*

50- False about abducent nerve :

Answer: emerges from posterior part of brainstem.

51- True or False:

Sensory innervation for skin of ear is only by auricular branch of vagus.

Answer: False

52- False about mastoid antrum :

Answer: posterior wall separated antrum from sigmoidal sinus and cerebrum

53- True about vestibule of inner ear :

Answer: central part of bony labyrinth.

54- All of the following present in anterior wall of tympanic cavity except :

A- Entrance into the canal for the tensor tympani muscle

B- Opening leads to the auditory tube

C- Pyramid

D- Thin bony septum separates the canal ...

****Answer: C*

55- The correct statement is :

A- posterior root of spinal cord is also called sensory fiber

B- spinal nerve has either motor or sensory nerve

C- spinal cord is the same length of vertebral column

****Answer: A*

56- Lesser occipital nerve innervates :

Answer: back of scalp and auricle .

57- Rhomboids major innervated by :

Answer: dorsal scapular

58- True about brachial plexus :

A- it crosses external jugular vein and superior belly of omyohymoidus.

B- lies upon first digitation of serratus anterior

C- emerges between anterior and posterior scalenus medius .

*****Answer: B**

59- True about accessory nerve :

A- emerges from anterolateral of medulla.

B- only sensory neuron.

C- spinal root from nucleus ambiguus.

*****Answer: A**

60- True about hypoglossal nerve :

A- receives efferent fibers from nucleus solitarius and trigeminal sensory neuclus.

B- hypoglossal nerve cross anterior crainal fossa.

C- receives fibers from corticibulbar, which subserve voluntary movement of tongue.

*****Answer: C**

61- Lateral cutaneous nerve of thigh gives rise from :

A- L2-L3

B- L1-L2

C- L3

*****Answer: A**

62- Anterior branch of obturator nerve lies above :

A- adductus magnus

B- pectenius

C- adductus longus

D- adductus brevis

*****Answer: D**

63- All are popliteal nerves except :

A- tibial nerve

B- nerve to periformis muscle

C- common peroneal nerve

D- posterior cutaneous nerve of thigh.

*****Answer: B**

64- About parasympathetic nerve to the lung :

A- postganglionic nerve innervate smooth muscle of bronchial tree.

B- postganglionic neuron located near the lung

C- preganglionic neuron located in the ventral motor neuclus of vagus.

D- it causes bronchodilation and decrease bronchial secretion.

*****Answer: A**

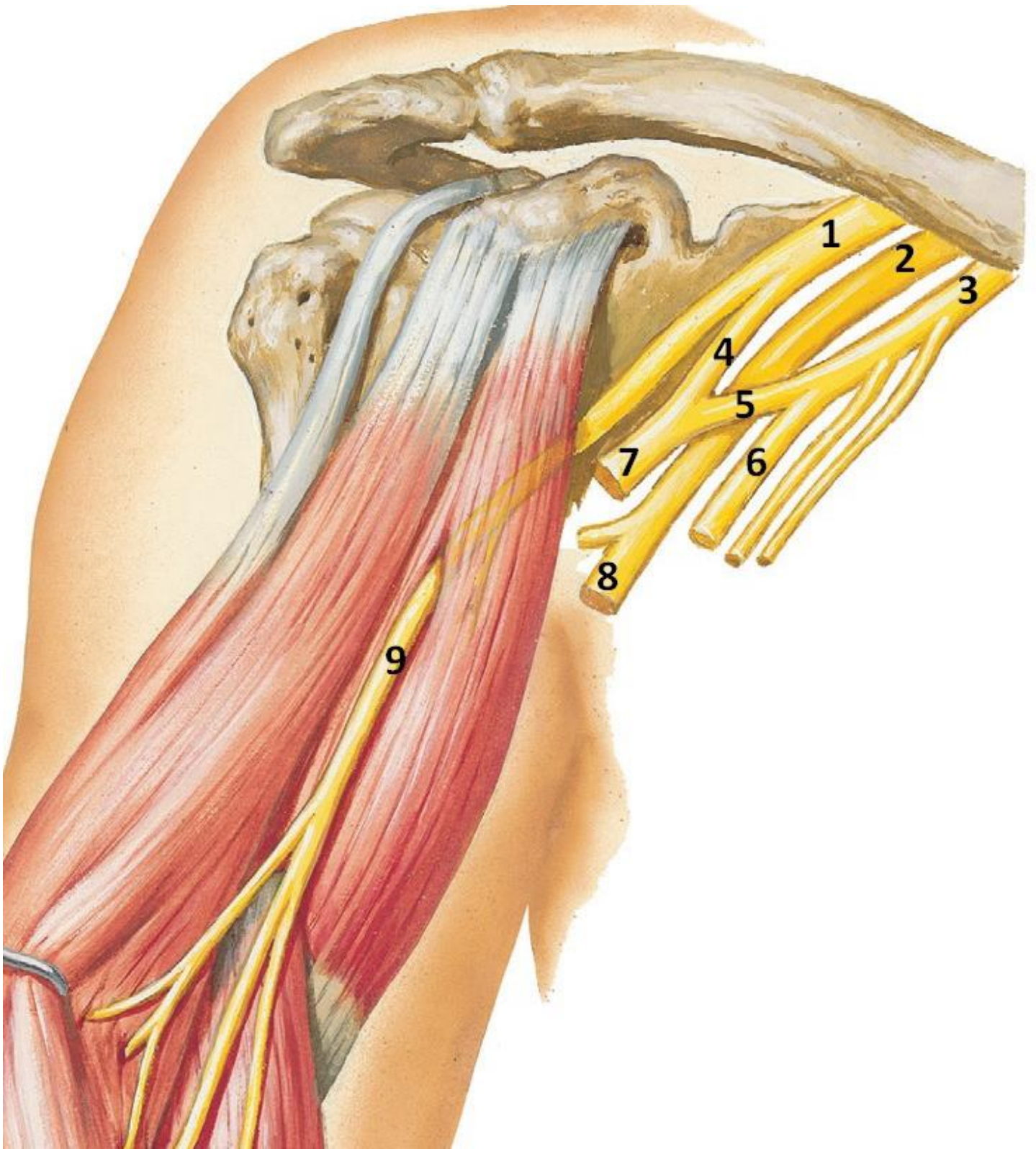
Anatomy lab (10 Q)

65- This skin in this picture is innervated by :



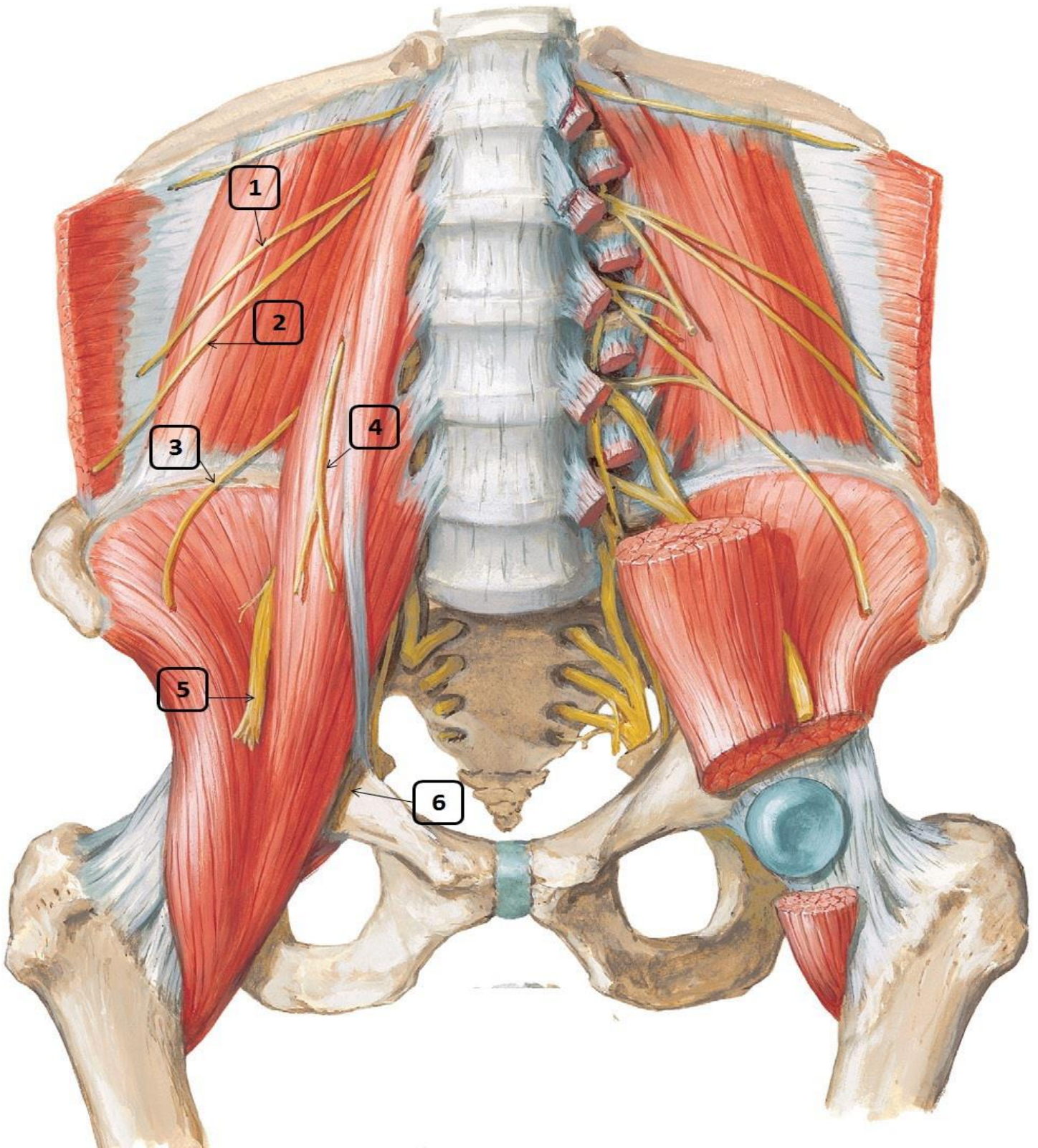
Answer: superficial and palmar cutaneous branch of ulner nerve.

66- The nerve (number 8) in this picture represents :



Answer: radial nerve.

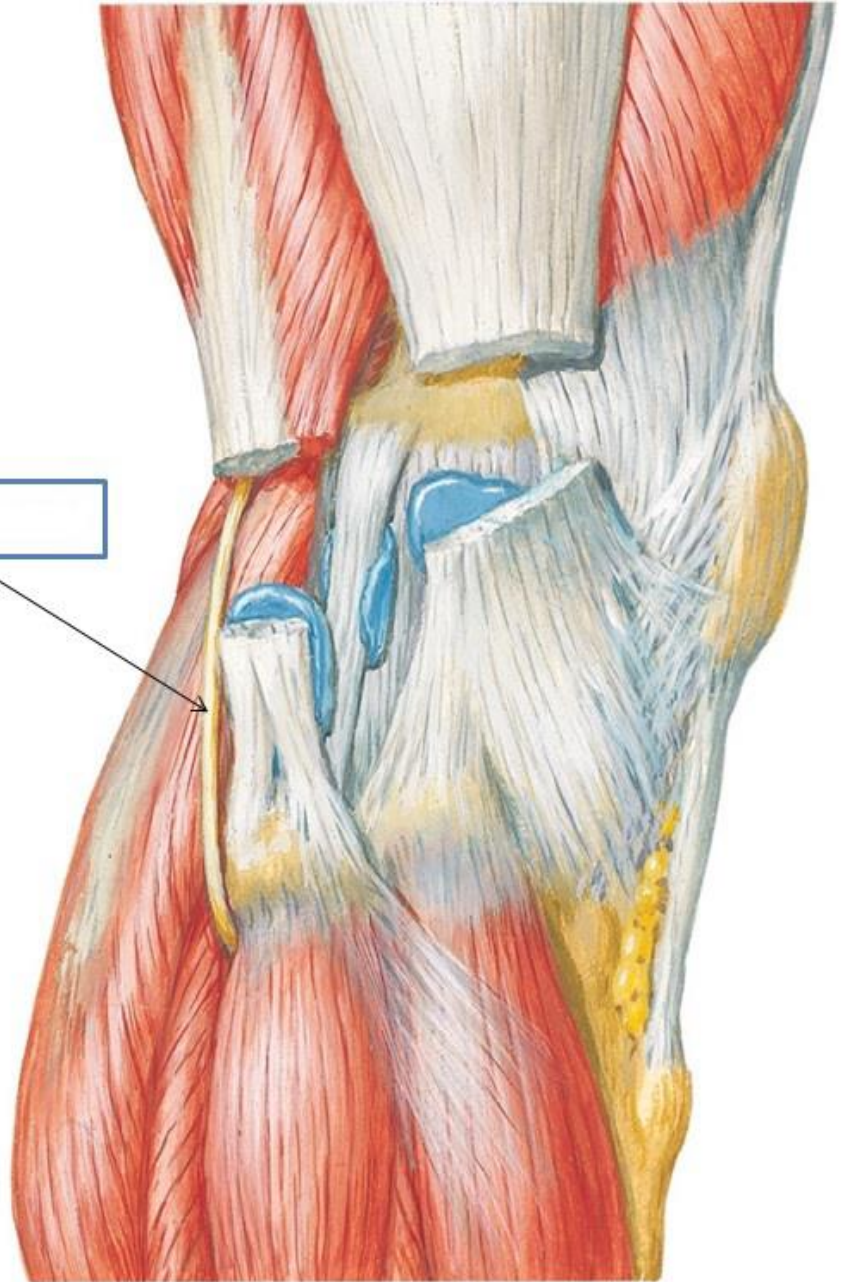
67- Black arrow (number 4) in this picture represents :



Answer: genitofemoral nerve.

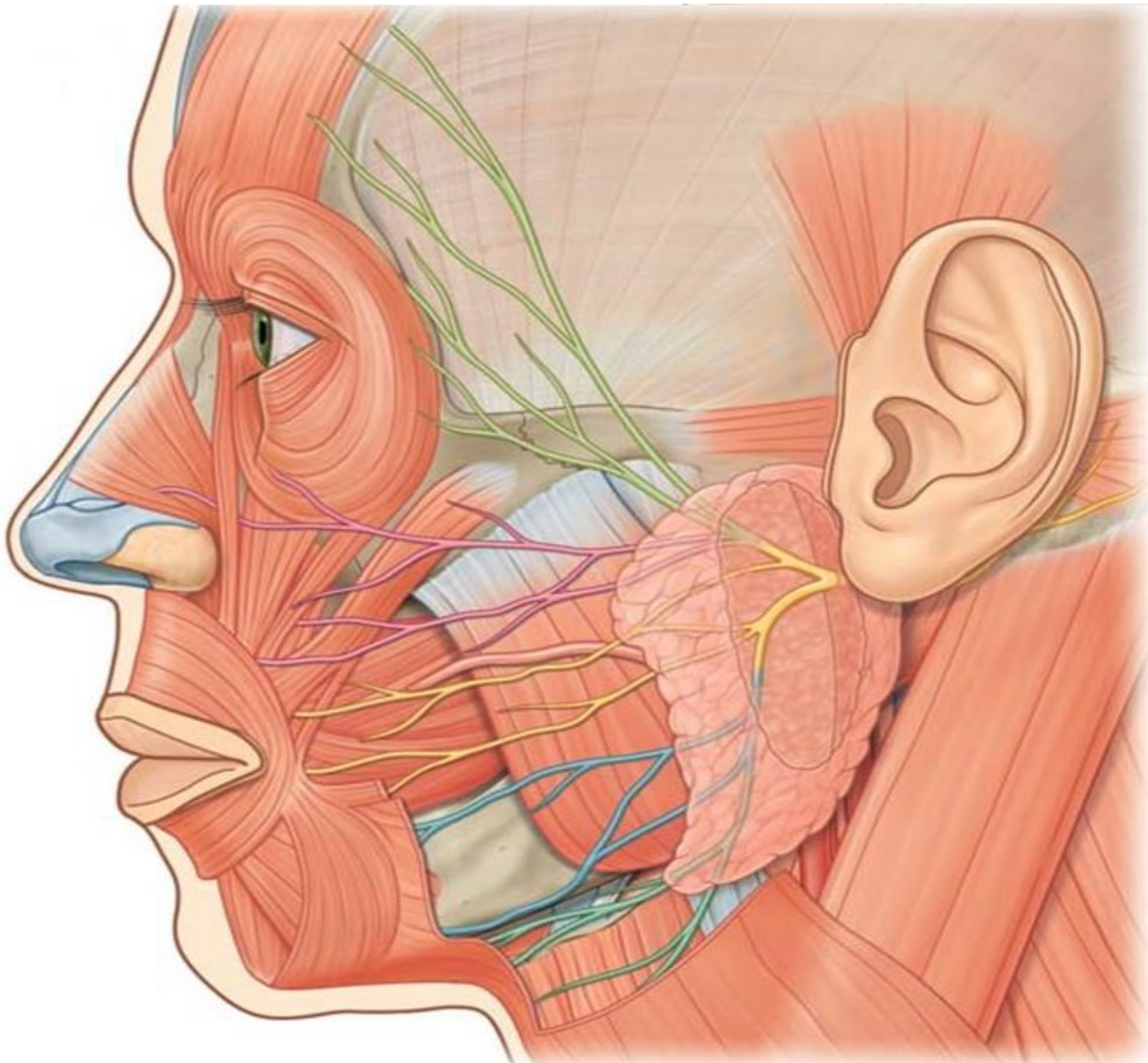
68- This nerve is :

????



Answer: common peroneal nerve.

69- The nerves in this picture are a branch of :

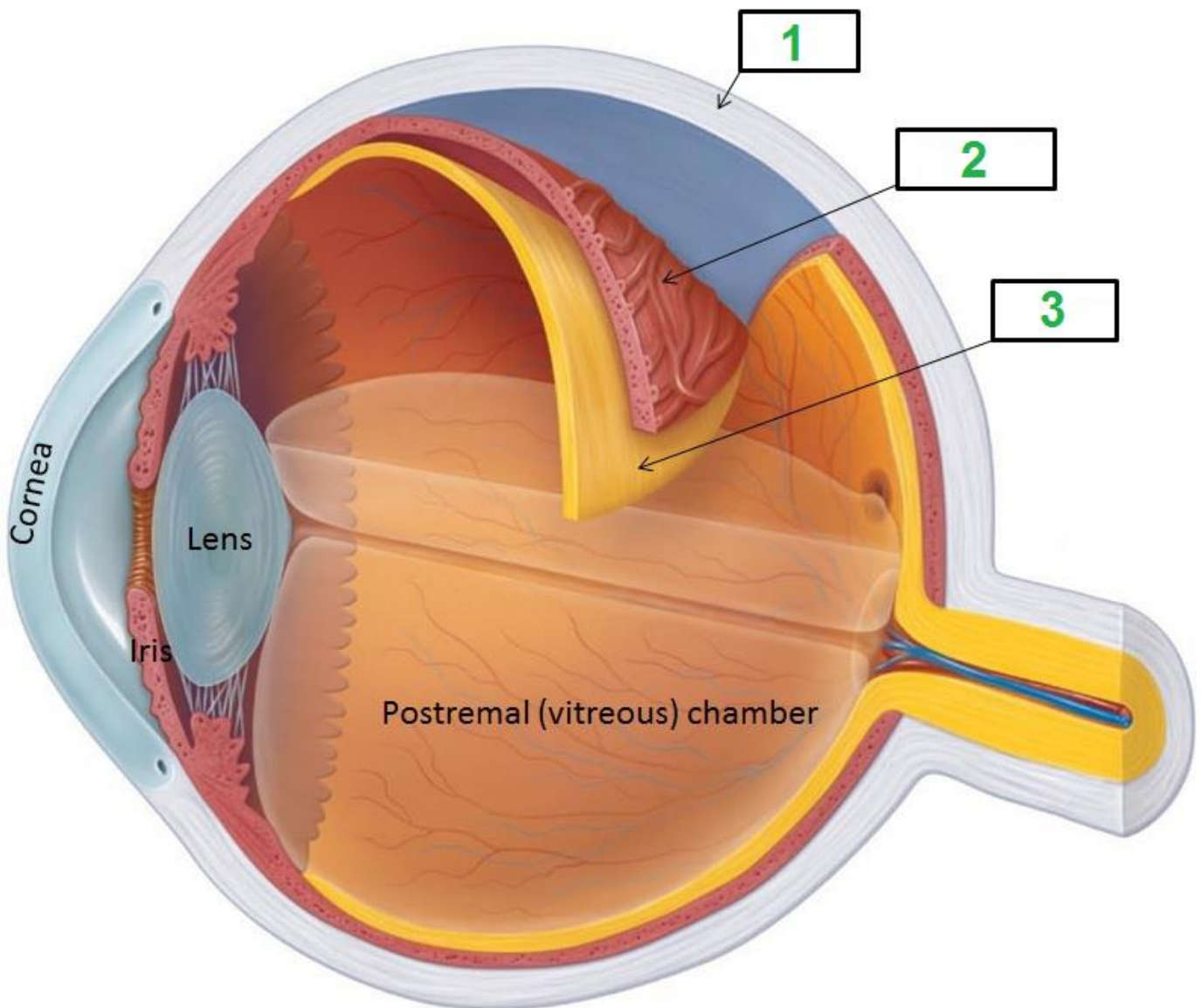


Answer: facial nerve

70- Picture about sacral plexus

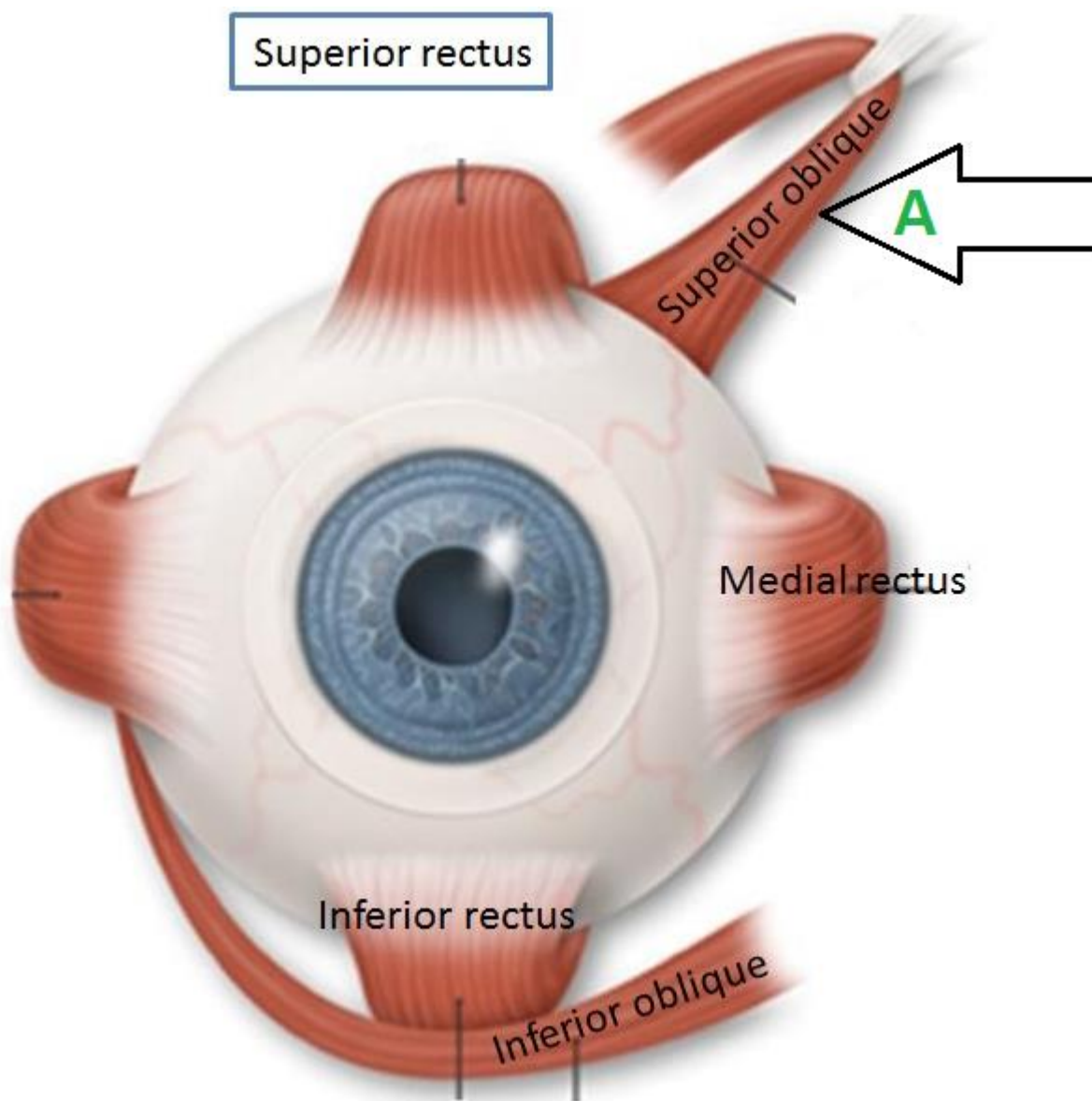
not brachial . not cervical . not lumbar plexuses.

71- The arrow with number 2 represents :



Answer: choroid part of eye coat.

72- In this picture; (A) represents :



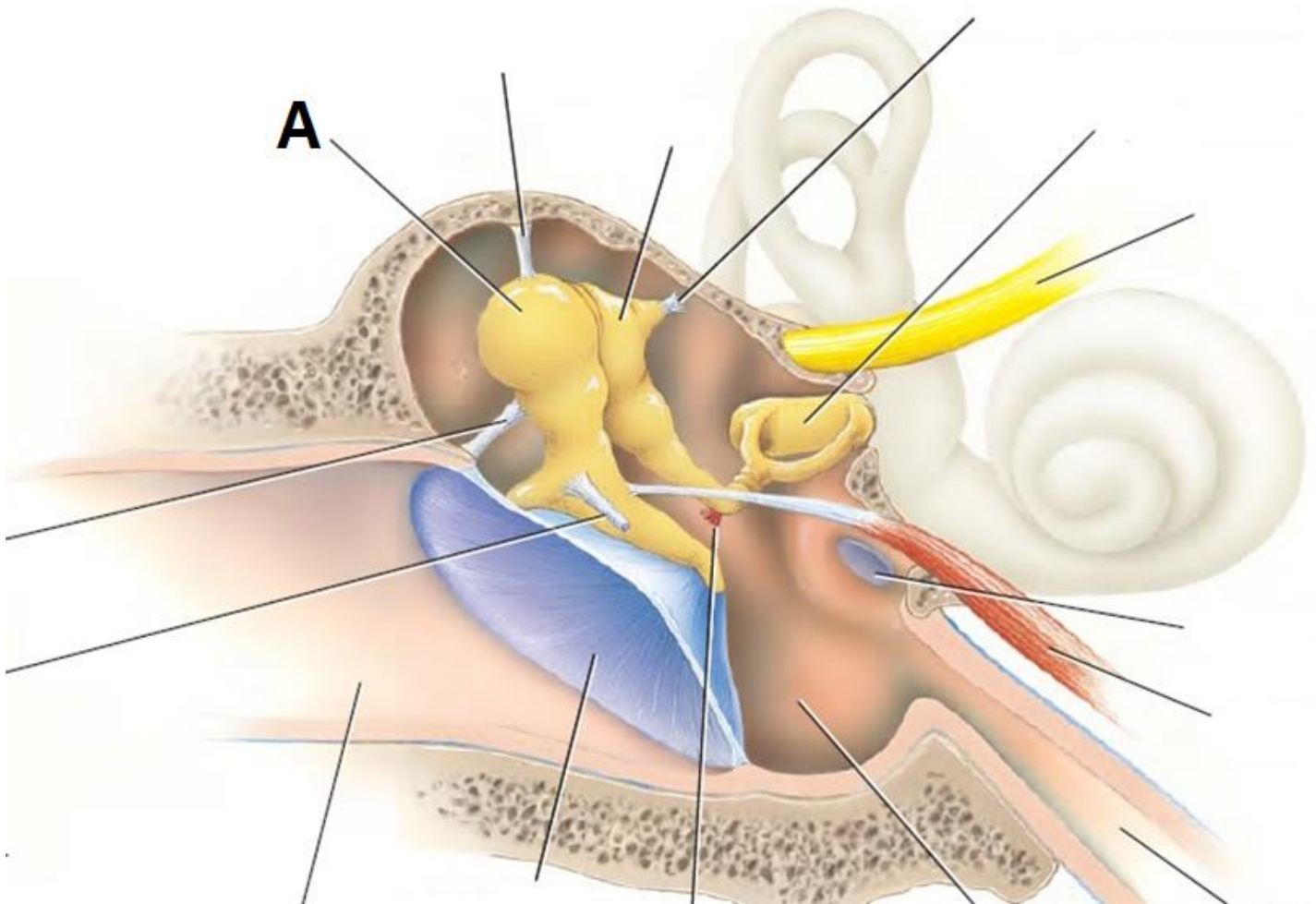
A- superior oblique muscle of right eye

B- superior oblique muscle of left eye

C- inferior oblique muscle of right eye

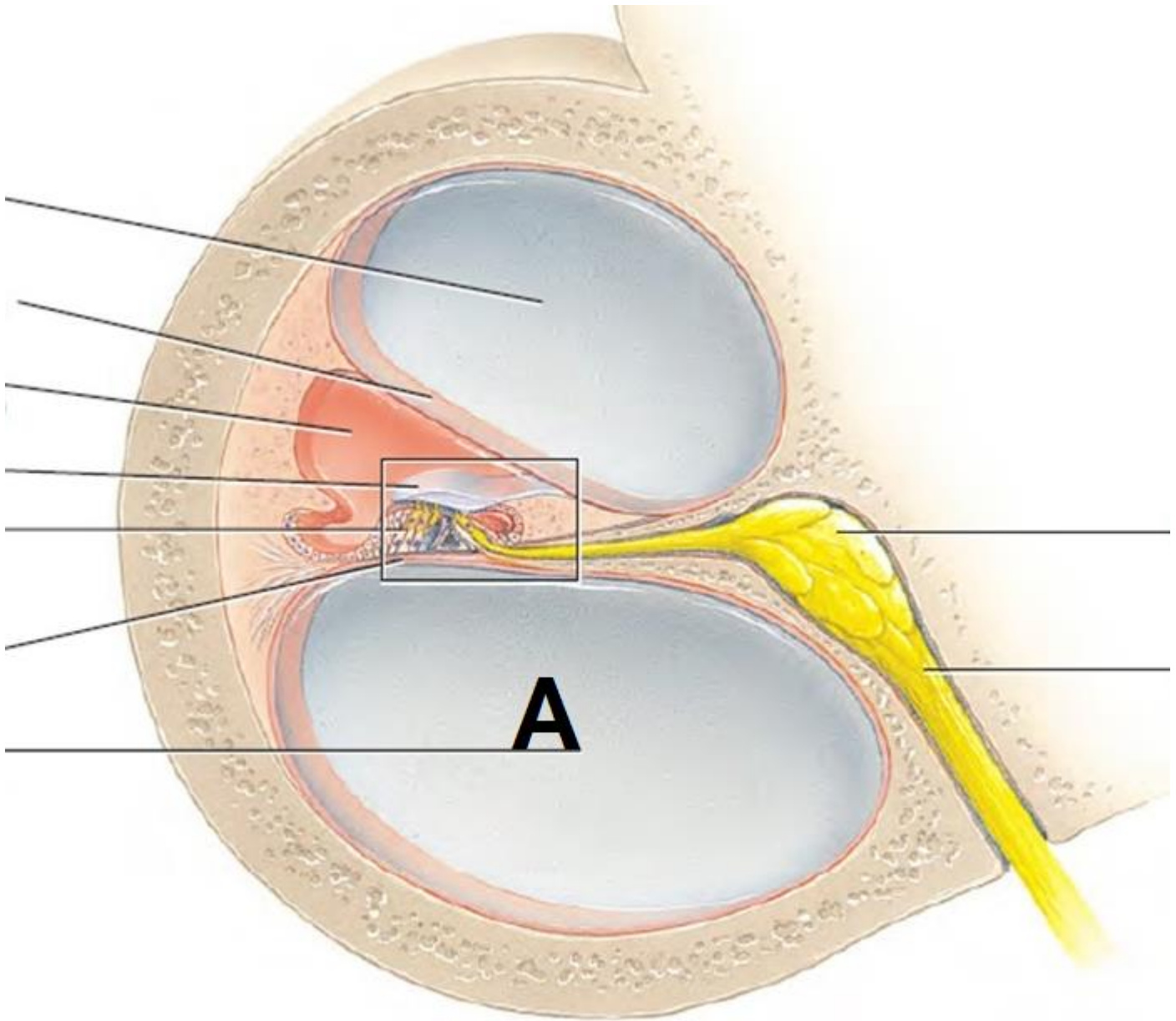
*****Answer: A**

73- In this picture; (A) represents :



Answer: malleus.

74- In this picture; (A) represents :



Answer: scala tympani.

Physiology lab (6 Q)

75- This picture is from snelling eye chart. The patient said his visual feild is to 4th line :

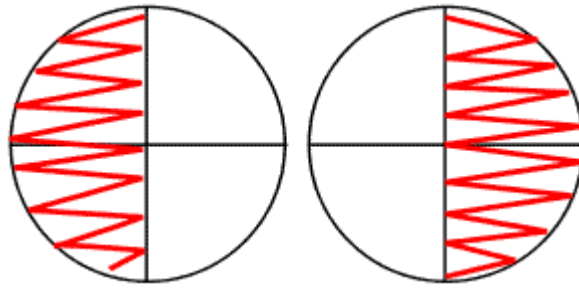


Answer: 6/18

76- ischihara chart is :

Answer: used to diagnosis of red-green color deficiencies.

77- From this picture ; this patient has :



Answer: bilateral vision loss.

78- Fundoscopic examination is used for all , except :

A- rod

B- cones

C- red reflex

D- retinal arterial

E- fovea center.

***** Answer: C**

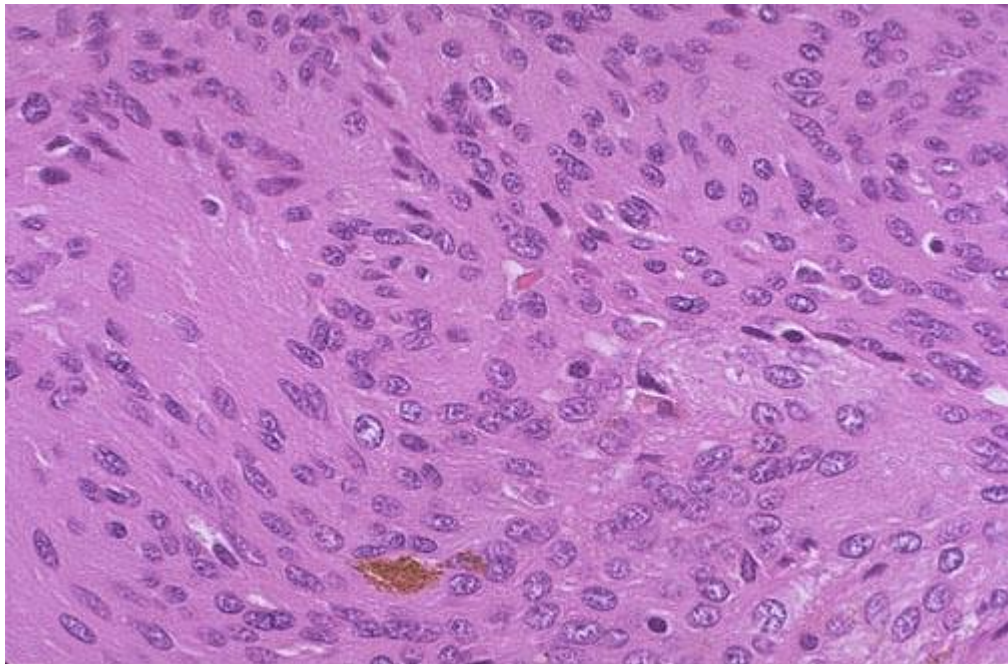
79- The false statement is :

Answer: barany chair is used for analyzing horizontal ,vertical semicircular canal.

80+81- two Qs. about conductive hearing loss (using weber test) with negative rinne's test

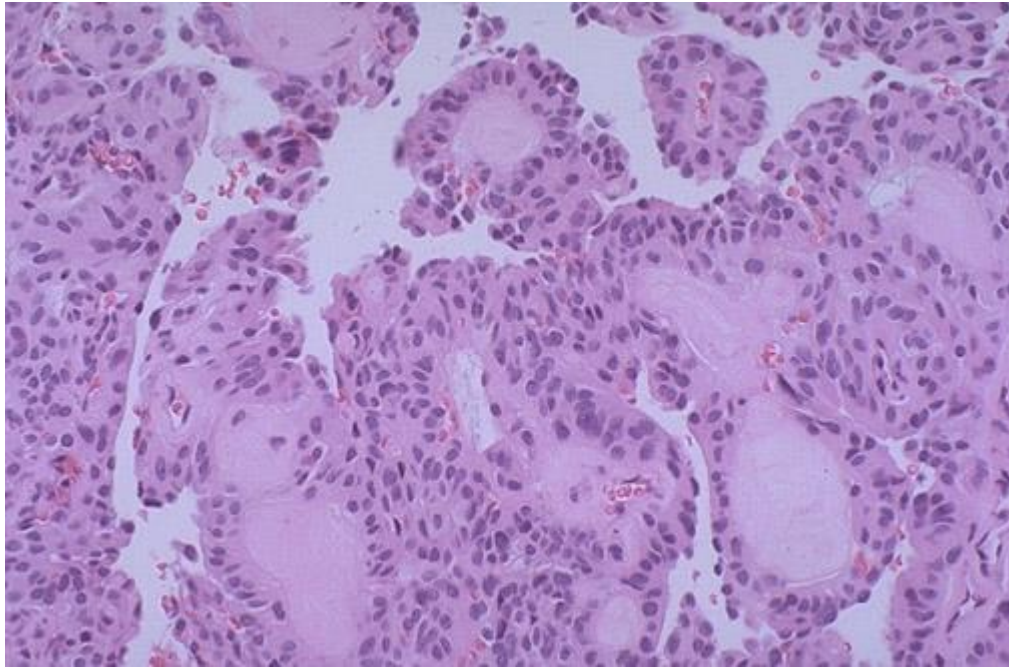
Pathology lab (6 Q)

82- In this dura attached-tumor , all are true except :



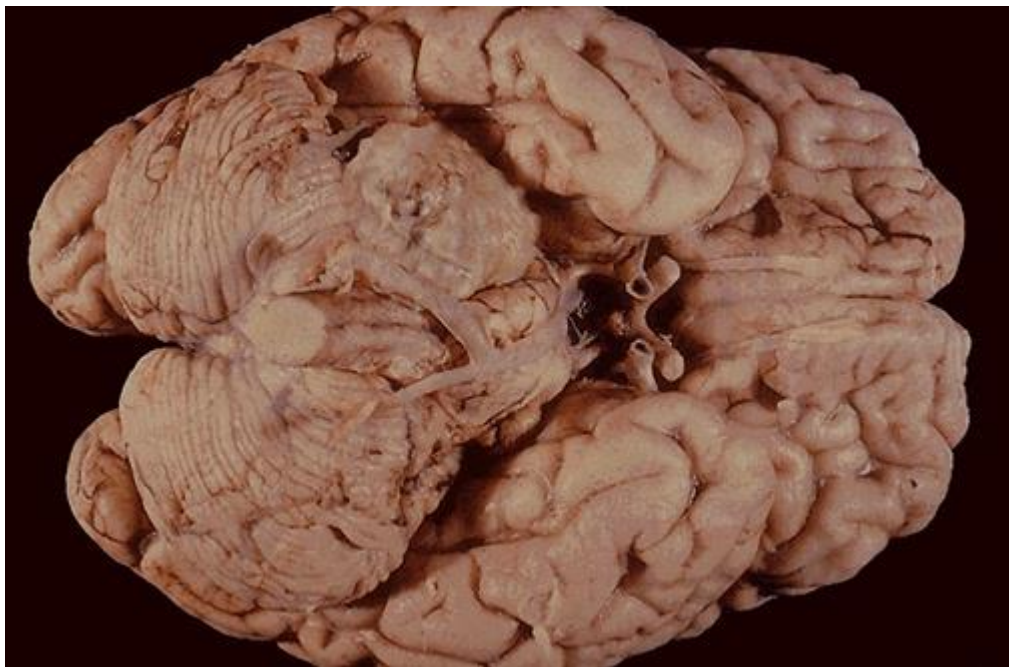
Answer: frequently , deletion of chromosome 1p and 19q

83- This picture is found in :



Answer: it is found near filum terminale.

84- The false statement about this picture :



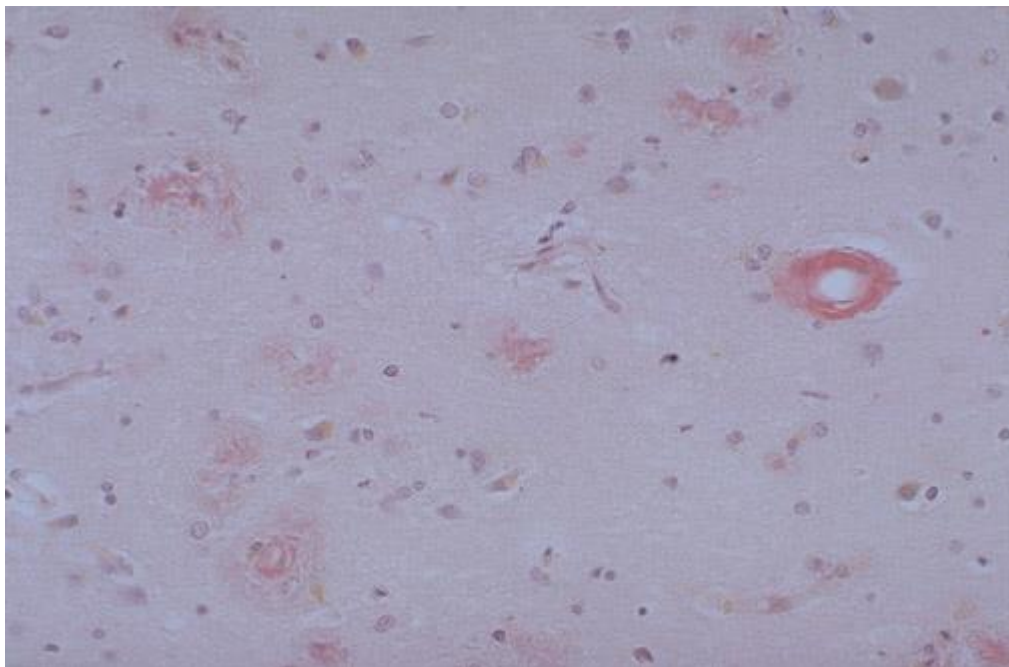
Answer: it is a neuroma .

85- This picture represents atrophy of corticospinal tract; which is true about this disease:



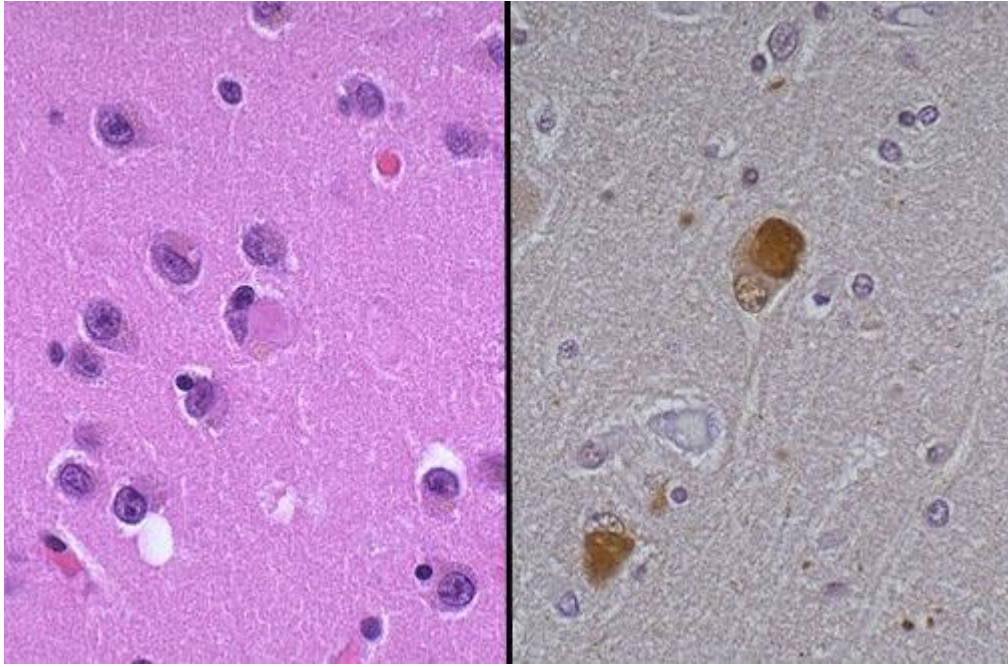
Answer: stephen hawking was died of this disease.

86- This is a picture about neuritic angiopathy; mainly seen in :



Answer: Alzheimer's disease.

87- This picture represents :



Answer: Lewy bodies of parkinson's disease.

Sorry for any mistake

Good Luck

لا تنسوننا من صالح دعائكم
المعتصم خميس
ياسمين النعواشي