

# CNS Glory Midterm Exam

Collected by : Maria Maghaireh

## **Anatomy** ( DR. Jamal & DR. Ayman )

1) Patient get behavioral and emotional disturbance .. the lesion in which:

**Perfrontal cortex** \*

Precentral gyrus

Postcentral gyrus

2)In papez circuit .. the ..... is connected to hypothalamus :

Hippocampus

3)Which of the following is INCORRECT:

Irritative lesion in uncus cause olfactory hallucination

4)Retrolenticular part of internal capsule a constituent of :

Optic radiation

5)one of the following is INCORRECT about corpus callosum :

Consist of association fibers

6)The degenerative area in Huntington Dis is :

Caudate nuclei

7)lesion in association somatosensory area (1,3,2) result in :

Tactile agnosia

8)which CN not one of cavernous sinus contents:

**Optic n** \*

Oculomotor

Maxillary

9)the unpaired sinus is :

**Occipital** \*

Transverse

Sigmoid

10) Which of the following is the most accurate about spinal cord :

- The veins drain into the dural sinuses of brain \*
- exclusively supplied by anterior and posterior spinal a

11) One of the following is a branch of vertebral artery:

- \_ant cerebral a
- \_post cerebral a
- \_post inf cerebellar a
- \_ant cerebral a

12) One of the is not part of the midbrain:

- \_substantia nigra
- \_3rd ventricle

13) Facial colliculus is located in :

- \_Medulla
- \_cerebellum
- \_pons

14) One of the following is INCORRECT :

- \_Broca's lesion... Motor aphasia
- \_Irritative lesion in uncus cause olfactory hallucination
- \_frontal eye field injury result in contralateral conjugation of both eyes

العلاقة بالشم لأنه ال

15) Archicerebellum regulates the body balance via:

- \_vestibulospinal & reticulospinal tract

16) Efferent fibers from the dentate nucleus go to.... Via.... :

- \_VL thalamic nucleus via SCP

\*17) Denticulate fibers:

- \_extend from arachnoid to dura
- \_holds BV to sc
- \_from pia to dura

18) The correct cross match b/w the artery and its area of distribution:

- \_vertebral artery.... Medulla + sc

19) Which of these structures receive the all input of basal ganglia:

Striatum

20)The connection btw the 3rd and 4th ventricle:  
By cerebral aqueduct

21)Spino thalamic ==conscious

22)The true point about the spinal cord is

Its length = ٤٥ رقم غير ال

Has three enlargement areas

It is Supplied by the anterior and posterior spinal arteries ✓

23)floor of 4th ventricle is formed by the lower half of pons & upper half of medulla  
وغالبًا abducent الإجابة

24)Regarding the cerebellum development, one of the following statement is INCORRECT

:

\_ central canal widens to form the 4th ventricle

\_ cerebellar peduncles are formed from the axons of the neuroblasts

\_ **most of the neuroblasts remain in the mantle layer** ✓

-

25)Case about teenager with severe acne, develops cavernous venous thrombosis, which of the following veins is the main route to transfer the infection to the brain:

\_ ophthalmic vein ✓

## Physiology (DR. Fatima )

1) In order to inhibit the postsynaptic neuron:

\_ increases Cl influx to the cell ✓

\_ Decrease K efflux

\_ excite the cell metabolism

2)Regarding the CNS organization, one of the following statements is true :

\_ s. c acts only as a conduit pathway for nerve fibers

\_ high brain regions are responsible about the automatic, instantaneous movements

\_ motor function of the CNS includes skeletal & smooth muscle contraction and glands secretion ✓

3)Cerebral blood flow may increase by:

\_ Decrease CO<sub>2</sub> in the cerebral arterial blood

\_ increase pH

- \_ Decrease BP <60 mmHg
- \_ astrocytes activation ✓

4) Stimulation of which of the following hypothalamic nuclei results in satiety:

- \_ ventromedial nucleus ✓

5) Dyslexia results from lesion in which of the following structures:

- \_ supramarginal gyrus
- \_ occipital lobe
- \_ angular gyrus ✓

6) Regarding the intermediate long term memory, one of the following is correct :

- \_ Physical or chemical presynaptic change ✓

7) Patellar reflex is an example on:

- \_ myotactic lesion ✓

8) Delta waves are seen in:

- \_ deep sleep ✓
- \_ degenerative brain disorders

## Pathology (DR. Nesreen )

1) Watershed zones are vulnerable to damage by mechanism:

Hypotension

2) The commonest cause of intracerebral hemorrhage is :

Hypertension

3) Ischemic tissue reveal macrophages and beginning of gliotic reaction ...in :

- 3 days
- 12-24 hrs ?
- 10-15 days

4) All of the following can happen with transtentorial herniation except:

Pressure on ACA \* ✓

3rd CN compression

Pressure on PCA

Duret's hemorrhage

5) All are true about axonal reaction except:

Cell body enlargement

Central chromatolysis

Dispersion of Nissl to the central ✓

6) JC :: affect on oligodendrites

7) sth about Rosenthal fibers : related to some types of gliomas

8) folate deficiency related to : neural tube defect

## Pharma (DR .Romany)

1) Patient come to the hospital with depression, his medical history show that he have abscent seizure ,which of the following antidippressent make worsen side effect ?

1.Sartralin

2.Puprione

3.duloxetine

4.bupropion \*

\*2) .which of the following is corect about opiod and abuse drug ?

1.LSD not have physical dependence\*

2.fluxetine is alpha 2 blocker used to treat withdrawl of alcohol

3.cocciene act by preventing nuerotransmitter metabolism

4.thiamine used for delirium termens

3) Patient come with schizophrenia ,and have lack of motivation and poverity of speech ,which drug use in his tratment ?

1.clozapine\*

2.throidazine

3.fluphenazine

4.haloperidol

4) Case about elderly patient with anxiety : the DOC is buspirone

5) All the following statements are true, EXCEPT :

\_Carbamazepine is safer than oxcarbazepine and does not induce it's own metabolism ✓

6) All the following statements are true, EXCEPT :

\_Patient given Thiopental regain consciousness in just few minutes owing to rapid metabolism ✓

7) The correct statement is :

\_Olanzapine causes weight gain by targeting 5HT2C ✓

8) Morphin must be contraindicated or used with great precuation in all the following cases, EXCEPT:

\_Pulmonary edema associated with left ventricular failure ✓

9) Regarding anxiolytic drugs, which one of the following statements is true :

\_ Flumazenil doesn't reverse sedation due to barbiturates ✓

10) Regarding the antidepressants, all the following are INCORRECT, EXCEPT :

\_ Fluoxetine is indicated for bulimia but not for panic disorders with or w/o agoraphobia ✓

11) Buspirone for the patient 78 year old with GAD

12) Which one of the following statement is true:

\_ Fentanyl patches are contraindicated in acute and postoperative pain ✓

13) The antiepileptic for a case of secondarily generalized grand mal seizures by blocking sodium channels in high frequency manner:

\_ carbamazepine

\*

## Micro .(DR.Zain )

1) All of the followings are true regarding to streptococcus groups :

- group B strept. Is B hemolytic
- s.pneumonia is a hemolytic
- s.viridians is sensitive to optochin and bile solubility tests \*\* ✓

2) All of the following bacteria have capsule except ::

- s.pneumonia
- H.influenza type b
- s.agalactiae
- l.monocytogenes \* ✓

3) All of the following about arboviruses are true except :

- alpha virus don't attack erythrocytes \* ✓
- fuvivirus intracellular virion don't have M protein
- bunyavirus is negative sense ssRNA

4) The following results of CSF Test can be result from :

(Clear CSF , High WBCs , Increased protein, decreased glucose and decreased chloride )

- acute bacterial infection
- viral infection
- acute syphilitic infection
- fungal infection\*

5) All of the following are true about rabies virus except :

- bullet like shape
- can cause severe encephalitis
- negri bodies is pathognomonic for it
- post exposure prophylactic must be done despite the person body give negative test for the virus \*

6) Which of the following m. o has no vaccination :

- \_ L. monocytogens

## Biochem (DR. Mazhar)

1) One of the following is INCORRECT about sphingolipids:

- \_ sphingomyline consists of ceramide + glu

2) One of the following is INCORRECT about amines metabolism:

- \_ needs vit c
- \_ needs plp
- \_ dopamine is synthesized via decarboxylation reaction
- \_ NE is derived from epinephrine by methylation

3) One of the following is INCORRECT about GABA :

- \_ GABA formation reaction consumes CO<sub>2</sub>

4) Tay-sachs dis results from deficiency in which of the following enzymes :

- \_ Hexosaminidase A

## Physio lab (DR. Noor )

\*Babiniski reflex:

- \_ is called palatal reflex
- \_ dorsiflexion indicates abnormally during infancy
- \_ jerks the foot to the plantar surface

\*

## SGD

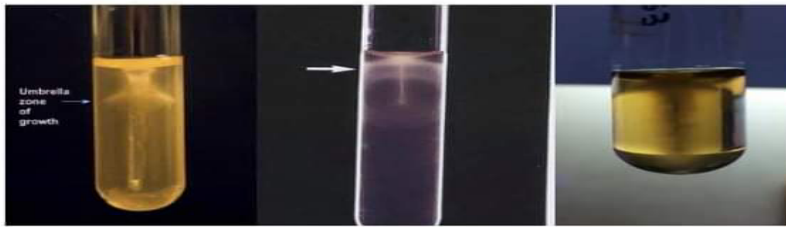
- 1) Locked in syndrome results from lesion in which of the following arteries:  
\_basilar artery ✓
- 2) A patient develops visual agnosia, memory loss, chorea and blindness. The artery which is the most likely to be affected is:  
\_PCA ✓
- 3) All the following are true about UMNL, EXCEPT :  
\_positive Babinski  
\_negative cremasteric  
\_negative abdominal test  
\_flaccid muscles ✓
- 4) All the following are true about LMNL except ;  
\_spastic muscles ✓

## Micro lab



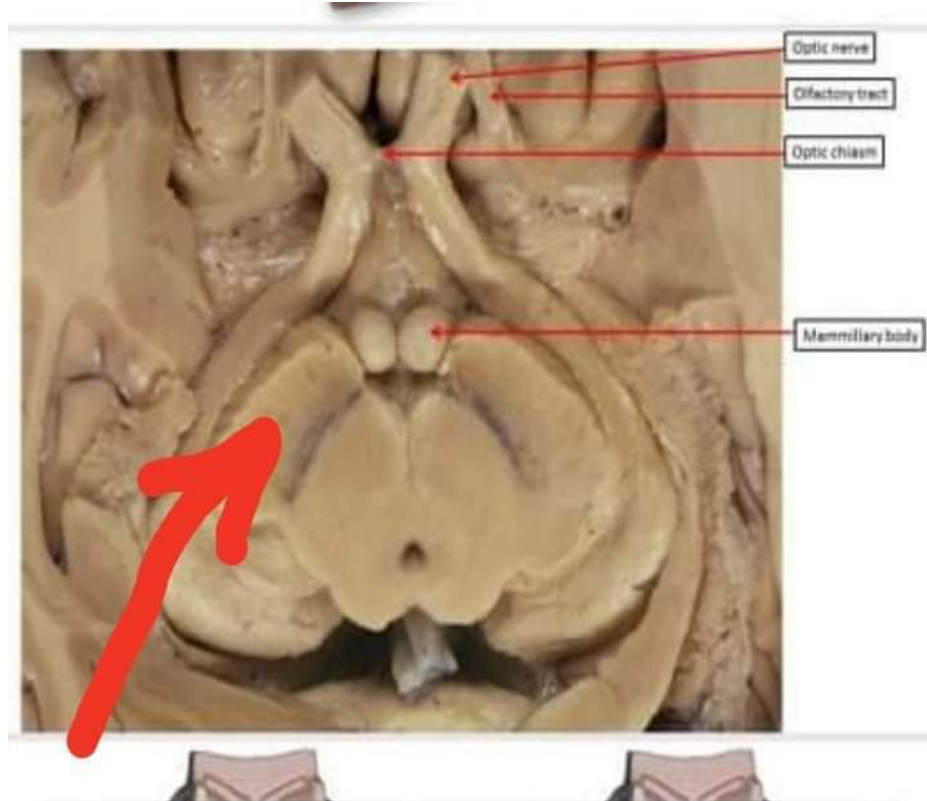


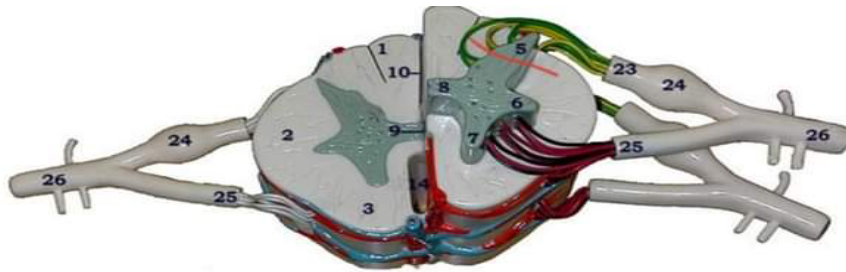
## *Listeria monocytogenes*



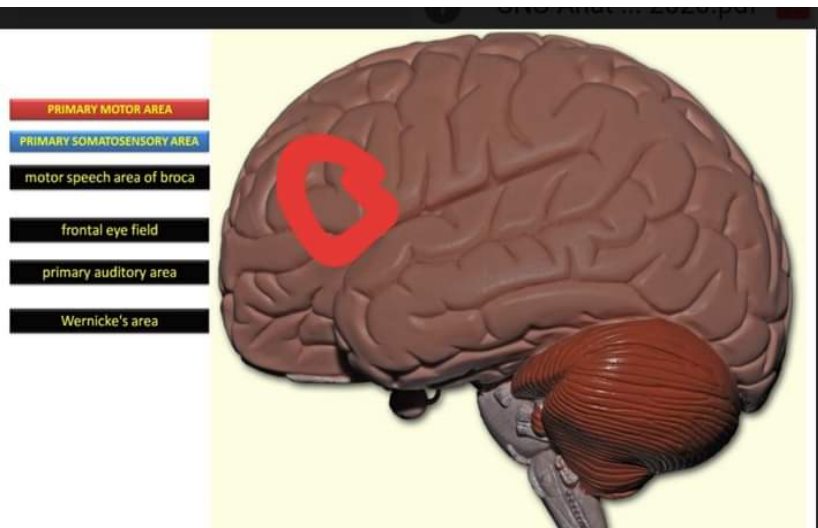
- ✓ The motility of *L. monocytogenes* is best demonstrated by stabbing a tube of semisolid medium and incubating it at room temperature (20 - 25°C)
- ✓ An **umbrella-like** zone of growth 2 to 5 mm below the surface of the medium is characteristic of *L. monocytogenes*

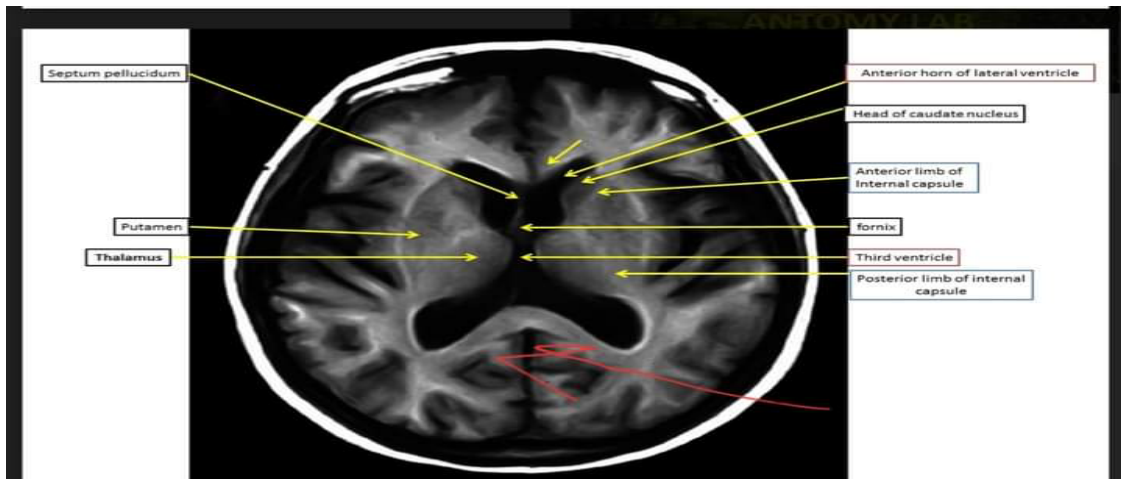
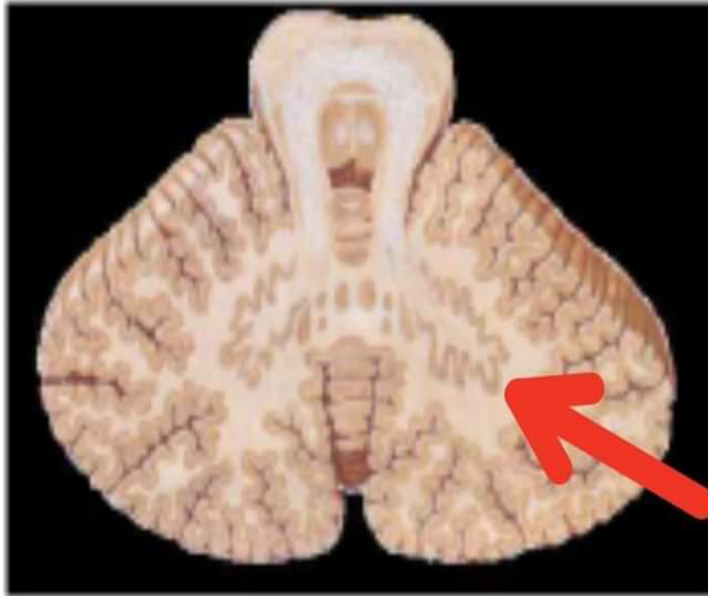
## Anatomy lab (DR. Osama )

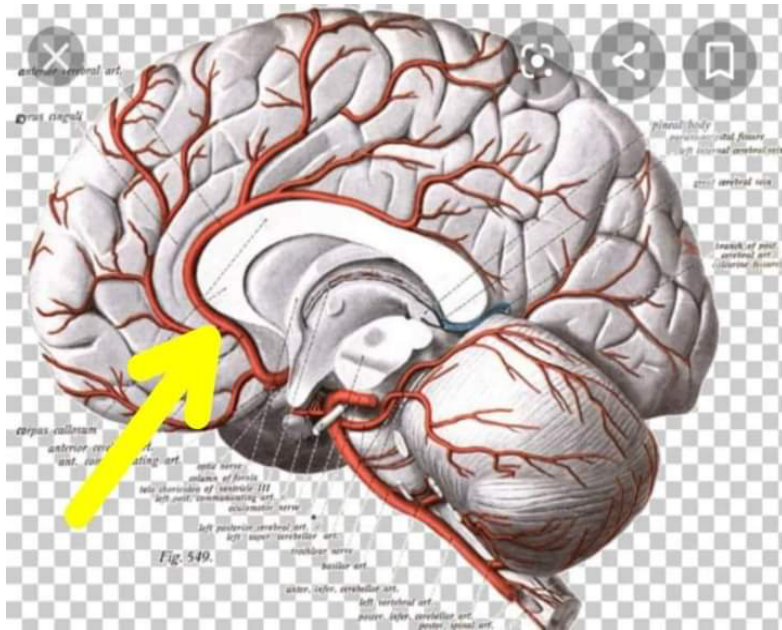
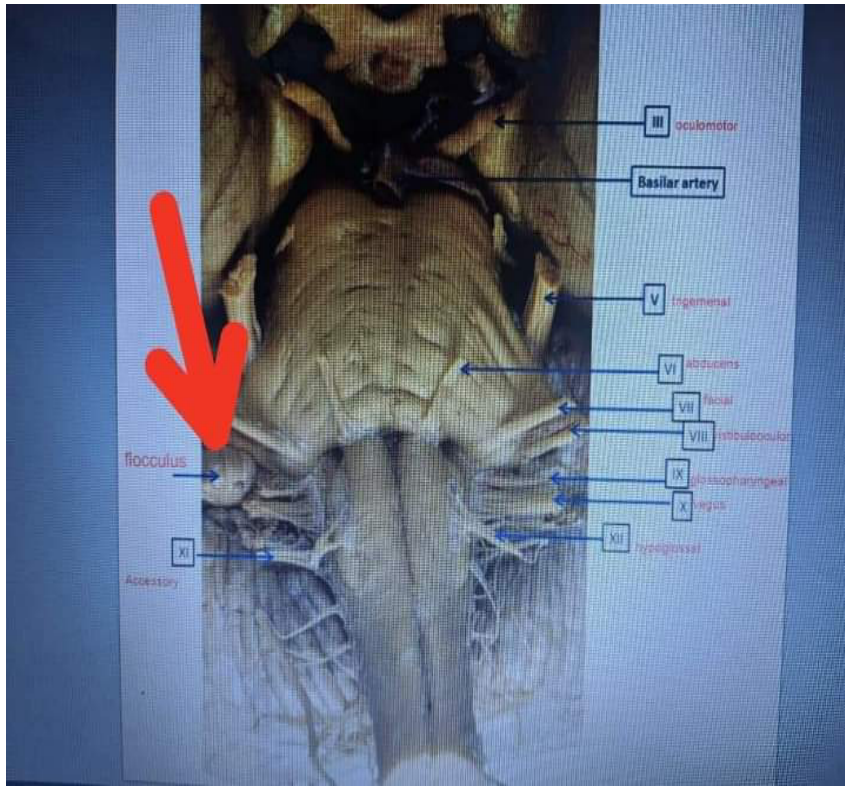


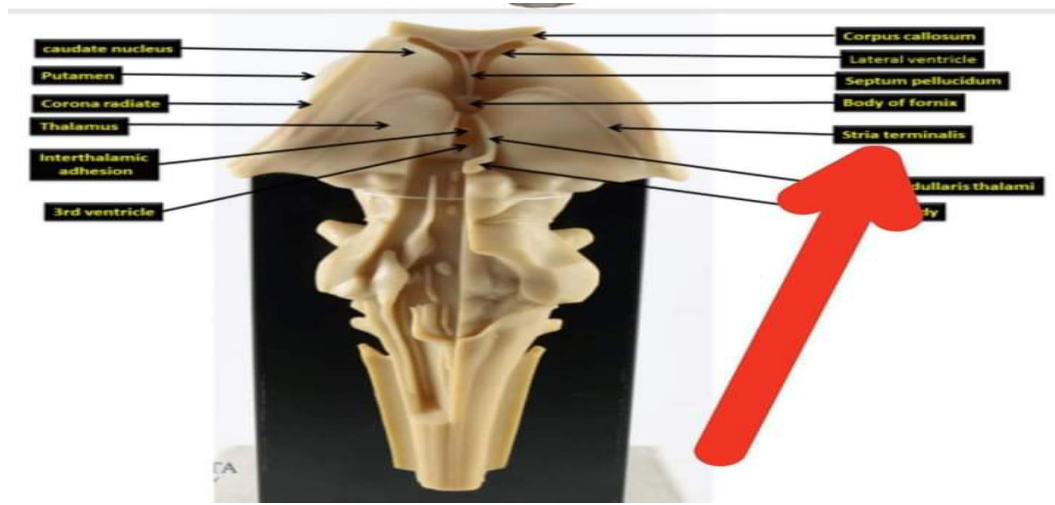


1	Posterior Funiculus	9	Central Canal
2	Lateral Funiculus	10	Posterior Median Sulcus
3	Anterior Funiculus	14	Anterior Median Fissure
5	Posterior Horn *	23	Dorsal Root
6	Lateral Horn *	24	Dorsal Root Ganglion
7	Anterior Horn *	25	Ventral Root
8	Gray commissure *	26	Spinal Nerve









سامحوني ع اي خطا بالتوفيق