

CENTRAL NERVOUS SYSTEM

ADRENALINE BATCH

MID EXAM

Done by:

Al-Motasem Khamees

Ahmed Zainalabideen

Yasmin Aln'awashi

Bara'ah Al-Omari

CNS Mid Exam – Yarmouk University

Pathology

1- About axonal reaction, all are true except :

Answer : injury to cell body.

2- Compensatory dilation of ventricles due to loss of brain parenchyma is often called :

Answer : hydrocephalus ex vacuo.

3- Rupture of CNS cerebral artery causes :

A- intracerebral hemorrhage

B- epidural hemorrhage.

C- subdural hemorrhage.

D- subarachnoid hemorrhage

**** Answer : A*

4- The cause of watershed infarction is :

Answer : Shock

5- Amyloid deposition in wall of meningeal vessels and cause hemorrhage, which type of hemorrhage :

Answer : intracerebral .

6- Major histopathological appearance seen in saccular aneurysm is :

Answer : loss of media.

7- Epidural hematoma :

Answer :rupture of middle M artery.

8- Neuronophagia in anterior horn of spinal cord is caused by :

Answer : poliovirus.

9- Case of creutzfeldt-jakob :

Answer :defected prion protein.

Biochemistry

10- Structure of GABA.

11- The enzyme that converts A.A to GABA is :

Answer : glutamate decarboxylase.

12- All are found in sphingomyelin structure except :

Answer :serine is the base of its structure.

13- Deficiency in hexoasminidase A causes :

Answer : Tay sachs disease.

Pharmacology

14- All are true except :

Answer : benzodiazpine with antidepressent , increase respiratory depression

15- All about triazolam and temazepam true except:

Answer : triazolam tolerance are within few weeks , so you can take it for months.

16- case of lorazepam over toxicity, you give him:

Answer : Flumazenil.

17- All atypical are first treatment for psychosis except clozapine because of:

Answer : risk of agranulocytosis .

18- Patient take typical antipsychotic and after 3weeks he develops tremor, rigidity and shuffling ; from which type of EPS these symptoms and what is the drug to treat him :

Answer : parkinsonism, bezotropine.

19- Patient has opioid-over toxicity, the commonly drug used to treat him is :

Answer :Naltrexone.

20- Opiod used to treat acute pain ;not more than 48hr:

Answer : mepridinr.

21- Drug used for opioid detoxification (short duration, less severe withdrawal symptoms)

Answer : buprenorphine with clonidine and naltrexone after discharge.

22- Abruptly discontinued Nitrous oxide leads to :

Answer :diffusional hypoxia.

23- False about ketamine :

Answer :rapid onset of action.

24- Mismatched statements is:

Answer : carbamazepine used to treat absence seizure

Microbiology

25- Case of *N.meningitidis*, about CSF findings

26- Case of 3day baby, symptoms of meningitis with findings of beta hemolytic, diplococcic :

Answer : s.agalactiae.

27- CSF findings (clear / normal pressure / 100 WBC/normal protein and glucose):

Answer : viral infection.

28- False about rabies :

Answer : fatal at incubation period.

29- false about C. neoformans :

Answer : negative for urease

Physiology

30- About metabotropic receptor, The false statement is :

Answer : fast response

31- All are major factors for regulation of CBF except :

Answer : sympathetic stimulation.

32- About hemineglect :

Answer : right injury of hemisphere - not see the left side of the world.

33- All are functions of representational hemisphere except :

Answer : language.

34- Gganto cellular neurons of reticular formation secrete :

Answer: acetylcholine

35- Little effect on CBF :

Answer: sympathetic regulation

36- Most important in BBB :

Answer: tight junction between endothelial cells

37- All are functions of amygdala except :

A- Decrease GI motility.

B- Increase GI motility

C- Defecation.

**** Answer: A*

(This question isn't included in our slides)

38- Bilateral ablation of will cause Klüver-Bucy Syndrom :

A- parahippocampus

B- anterior temporal cortex

****Answer: B*

(The correct answer is Amygdala but not one of the choices)

39- False about REM sleep :

Answer: its brain wave not similar to wakefulness

40- Petit mal seizure :

Answer: spike and dome patter

41- About endogenous (analgesic) system , raphe nucleus secretes :

Answer: Serotonin

42- responsible about bilateral movements :

Answer: supplementary motor cortex

43- The **False** statement about slow wave sleep (Non REM) is:

Answer: increase muscular tone.

vividly remembered dreams

(There are two correct answers)

Anatomy

44- Not from ectoderm :

Answer: microglial cells

45- filum terminale :

Answer: continuation of pia layer.

Attached to sacral bone

(There are two correct answers)

46- Removal of thalamus can cause all except :

Answer: unconscious motor control

47- The tract that can detect thermal and pain sensation is :

Answer: spinotectal tract

48- uncinata fasciculation (association fibers) connect between.

Answer: temporal and frontal bone

49- Premotor function is :

Answer: control of posture.

50- False about cerebral blood supply :

Answer: posterior spinal artery - from posterior inferior cerebral artery.

Physiology lab

51- About muscle tone ; the wrong statement is :

Answer: Spasticity- stiff, inability to bend

52- EMG processing :

Answer: Signal pick up >> Amplification & Filtering >> Conversion of Analog signals to Digital signals >> Computer

53- The correct statement about reflexes is :

Answer: Achilles Reflex >> Tests the S1,S2 nerve roots and the sciatic nerve

Microbiology lab

54- The media for Neiseria meningitidis is :

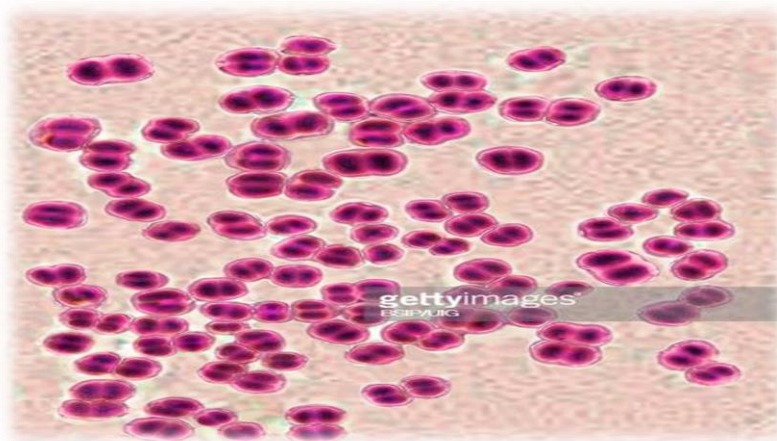
Answer: Thayer-Martin agar

55- The m.o in the A area is:



Answer: Streptococcus agalactiae

56- This m.o which has Coffee beans appearance is :



Answer: Neisseria meningitidis

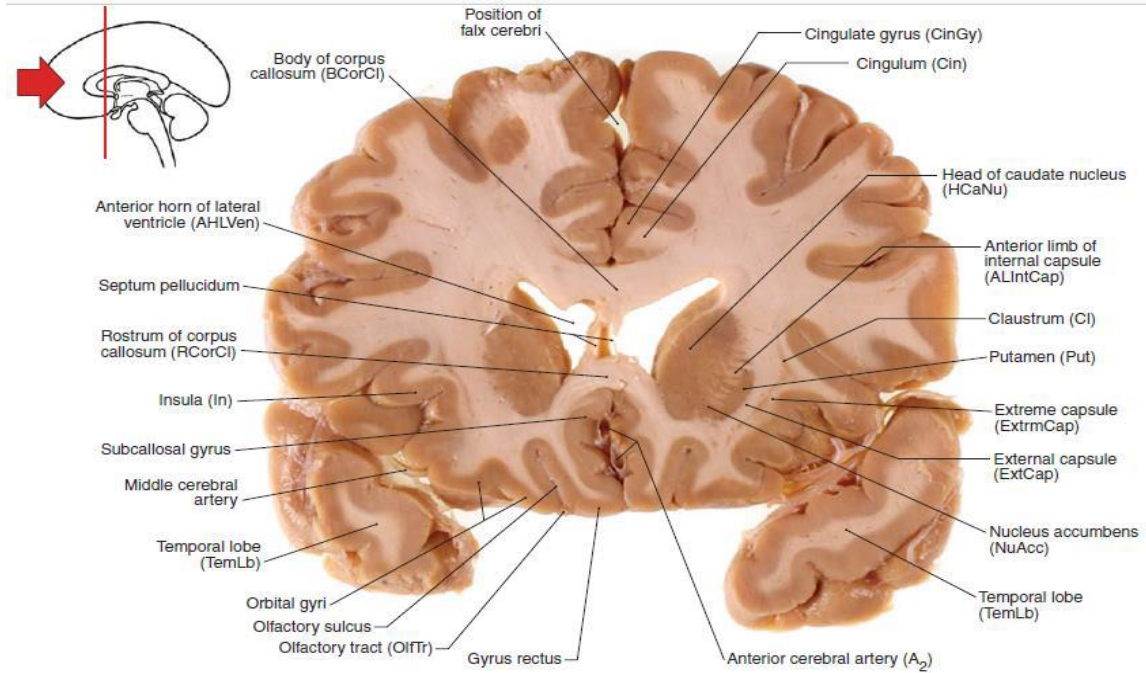
57-In Satellitism test the m.o in the midline is:



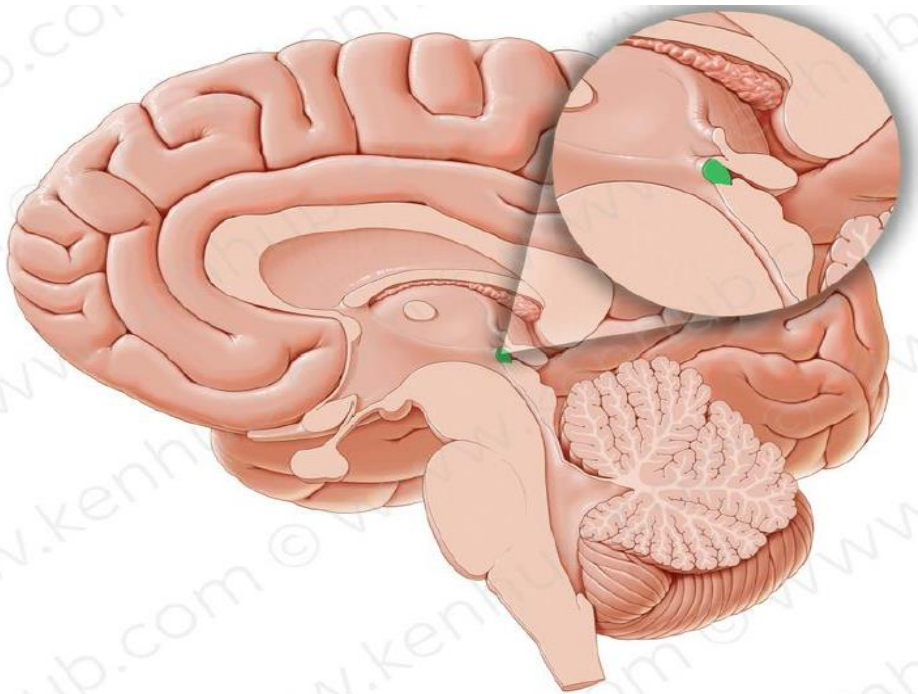
Answer: Staphylococcus aureus

Anatomy lab

58- About the *Head of caudate*

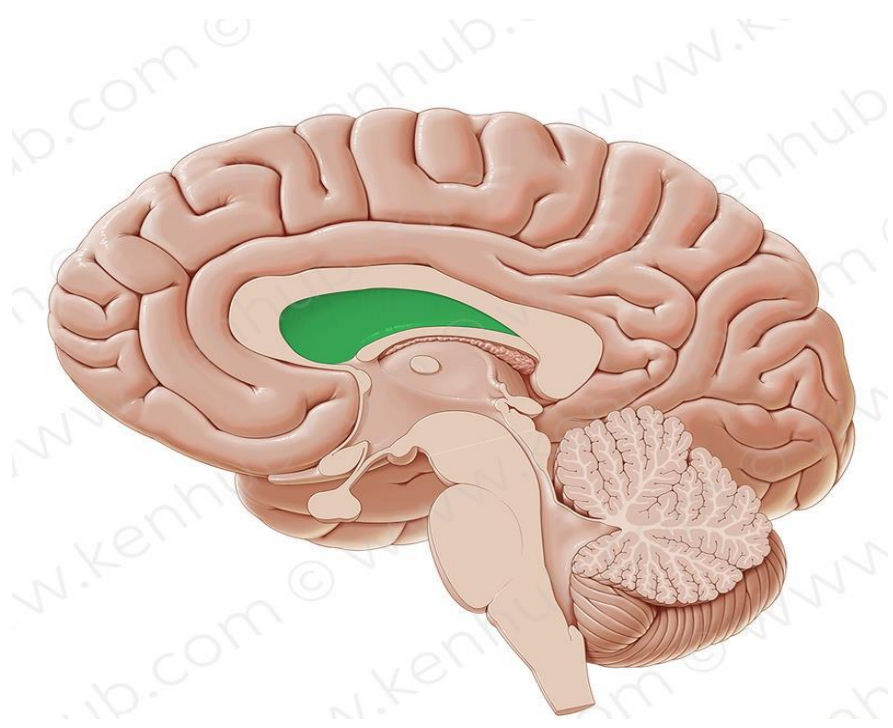


59- This commissure is :



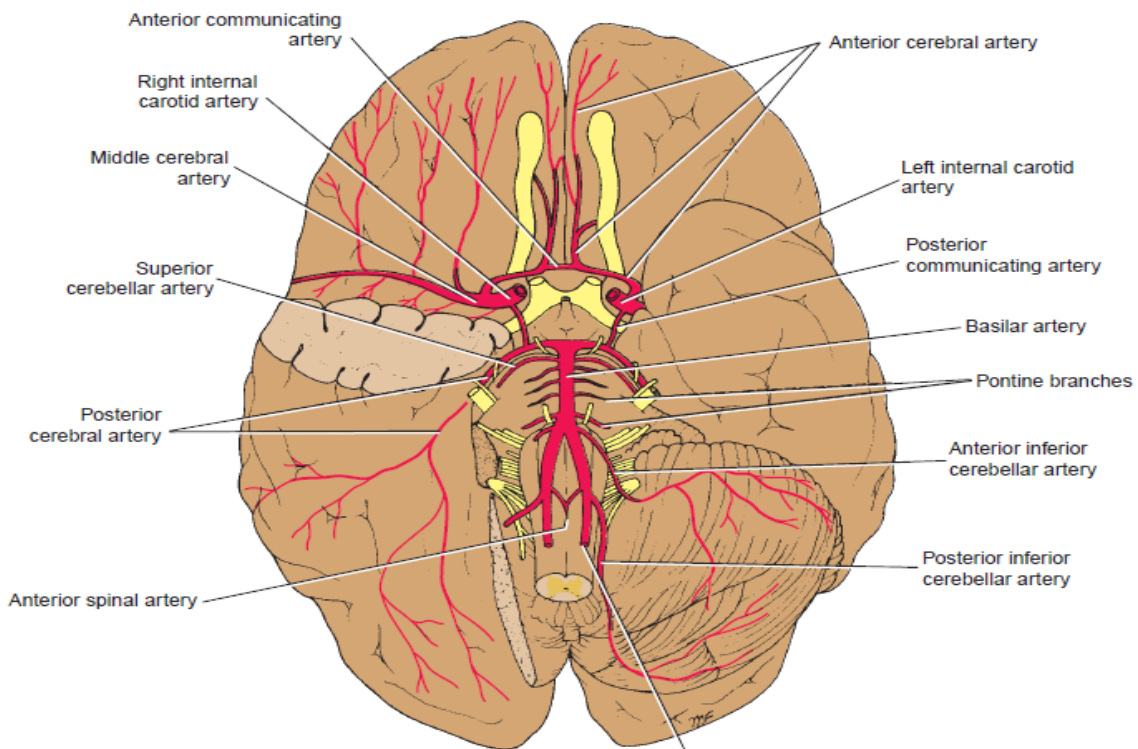
Answer: Posterior commissure

60- The lateral to this area :

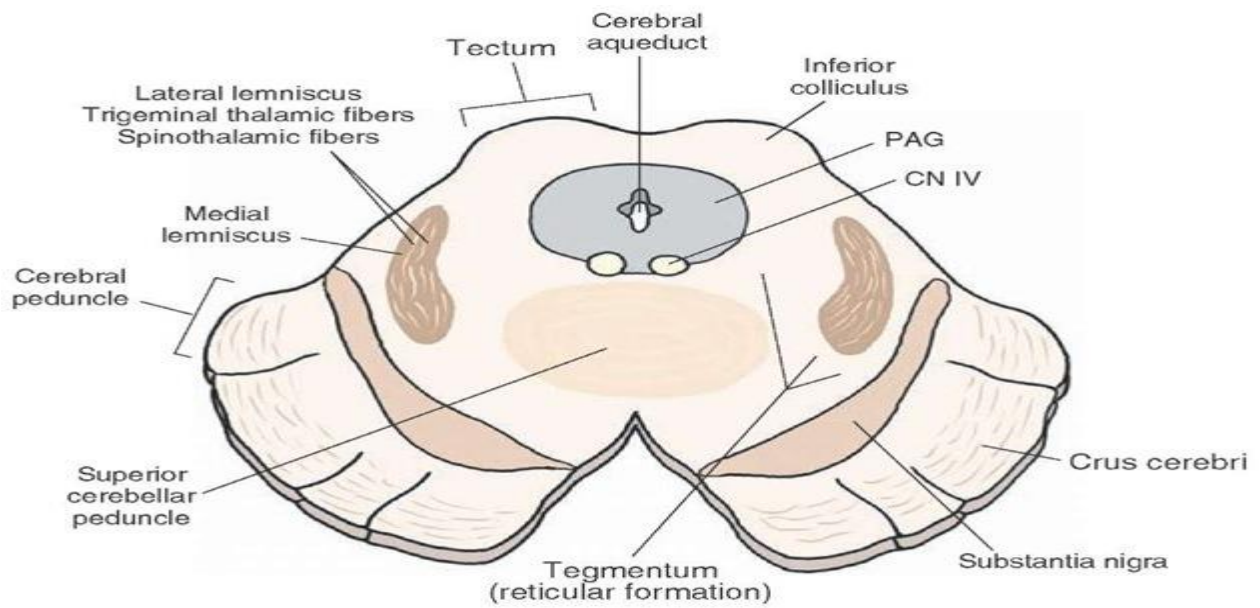


Answer: Lateral ventricle

61- About **Posterior cerebral artery**

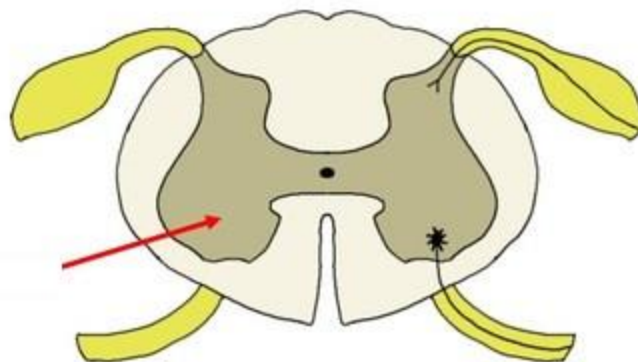


62- This picture is from :



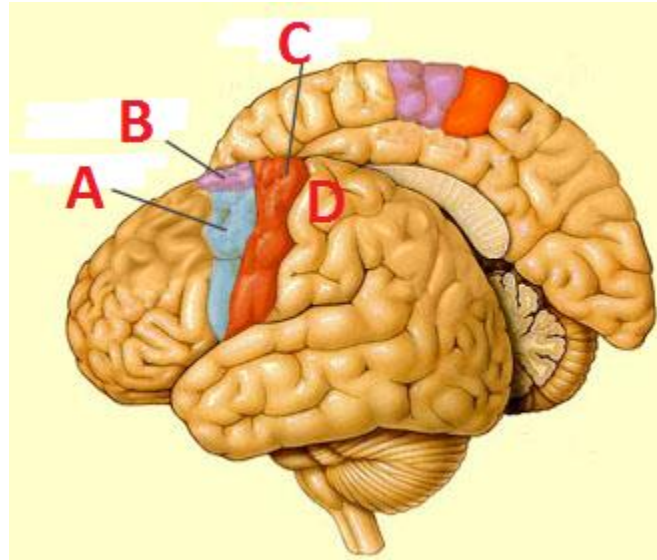
Answer : Midbrain

63- The arrow represents :



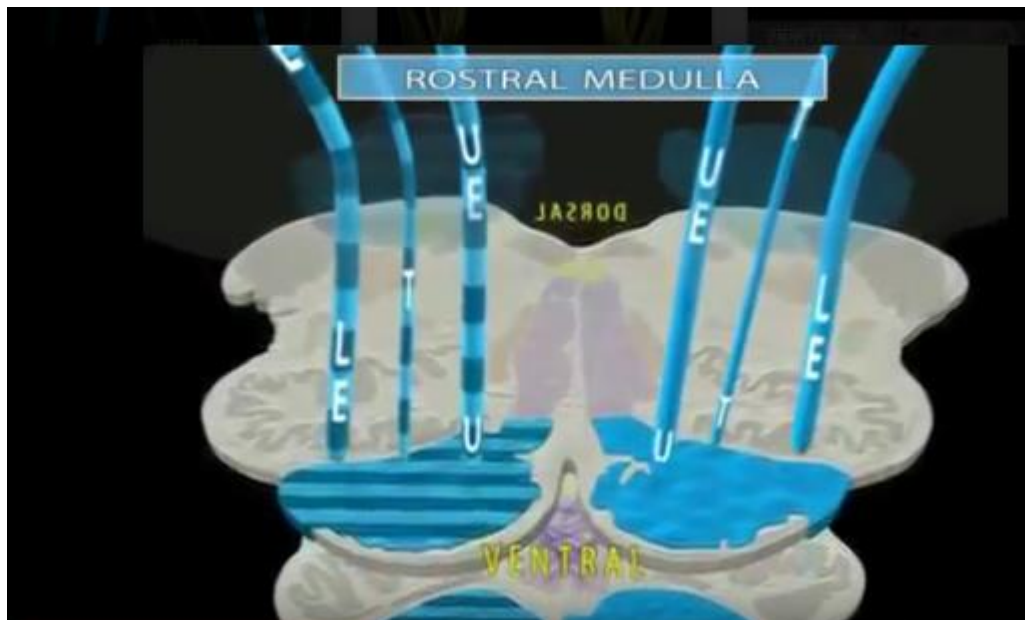
Answer: Anterior motor horn

64- If you want to represent **the face** in the cortex :



Answer : A

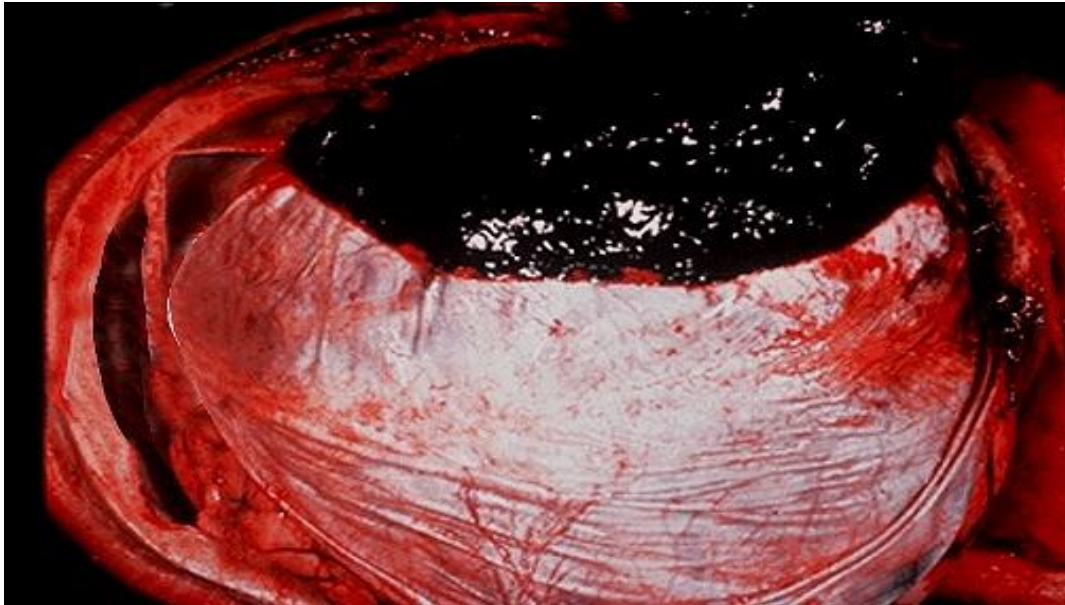
65- This tract is :



Answer : Corticospinal tract

Pathology lab

66- This picture is :



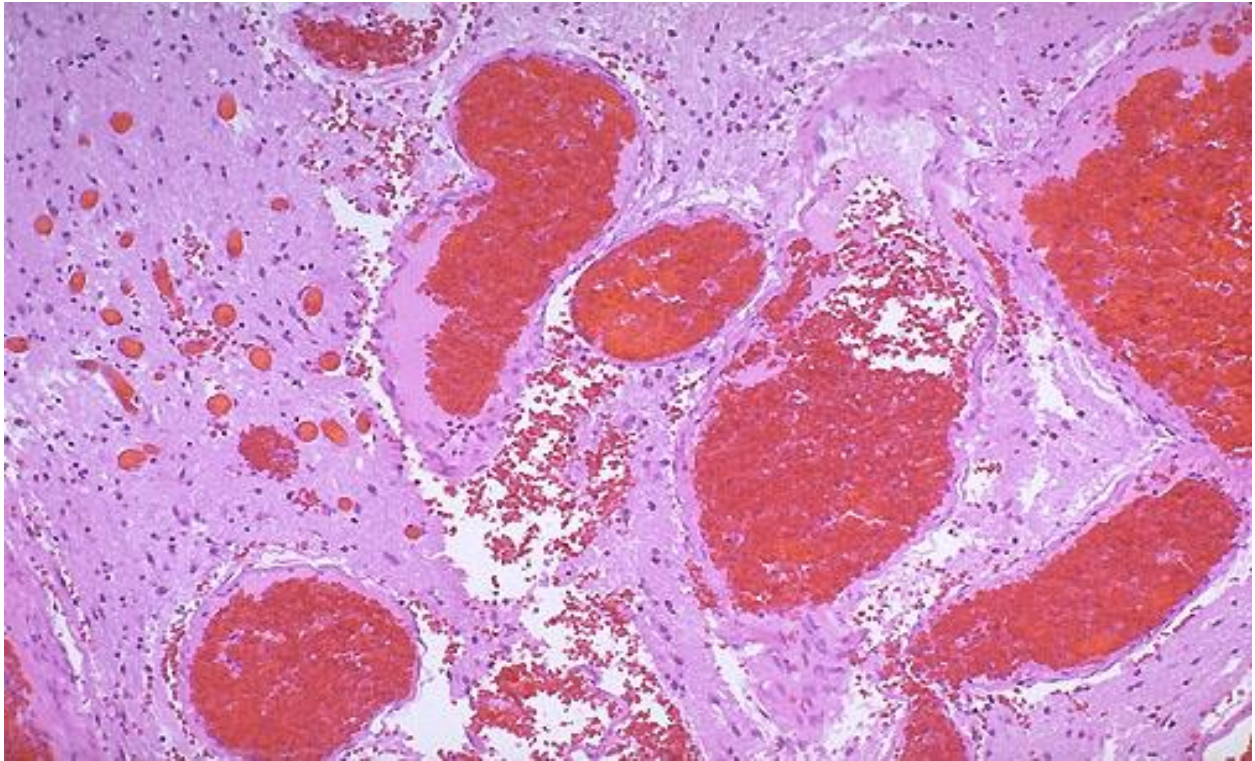
Answer: Epidural hematoma

67- Which type of hemorrhage will be developed according to this picture :



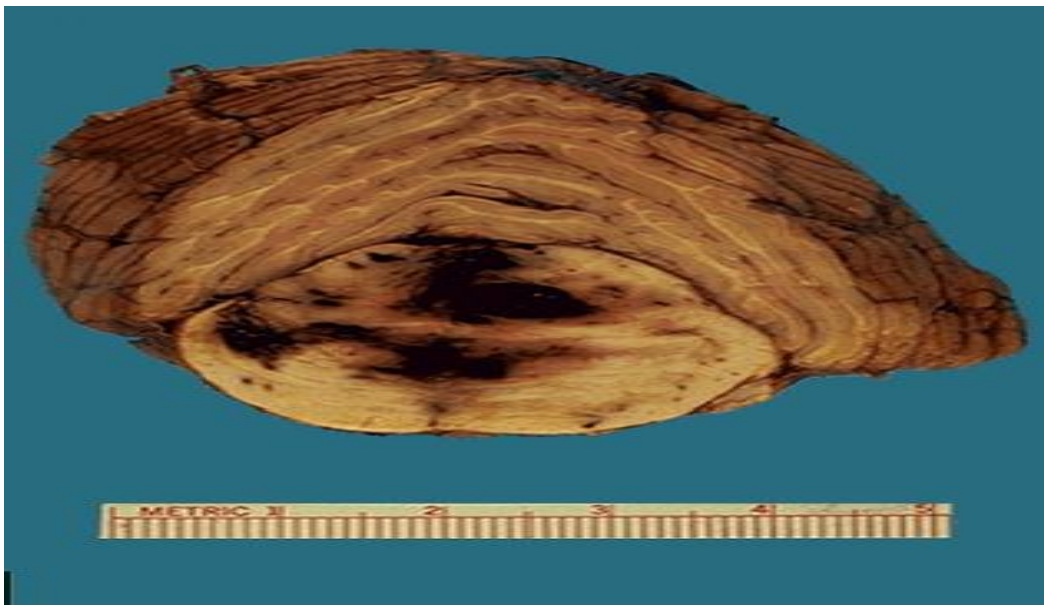
Answer : subarachnoid hemorrhage

68- This picture is :



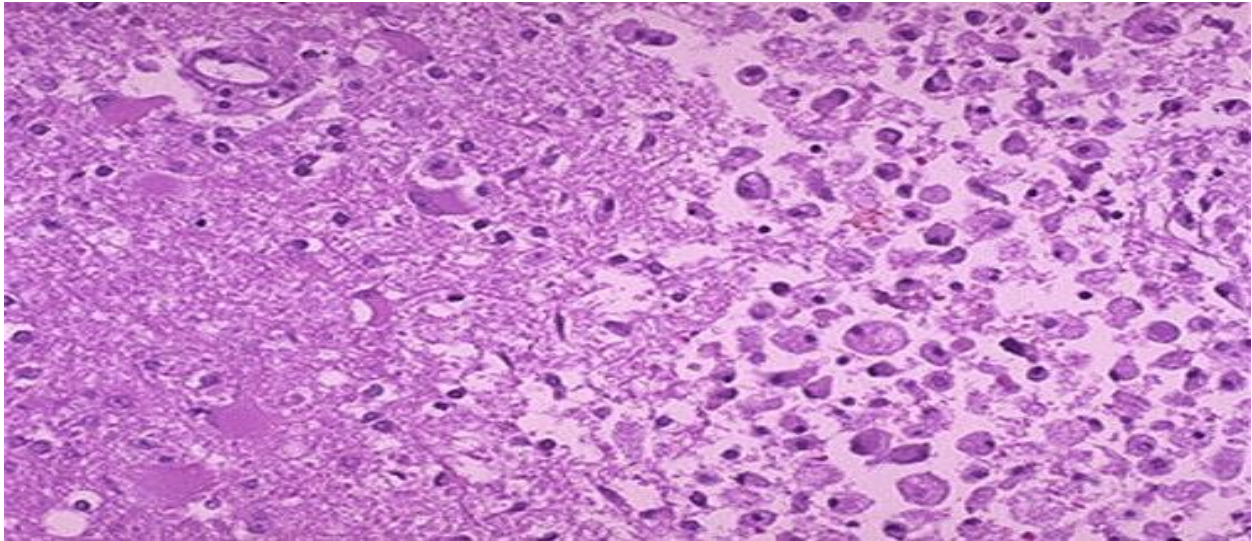
Answer : Arterio-venous abnormalities

69- This hemorrhage is caused by :



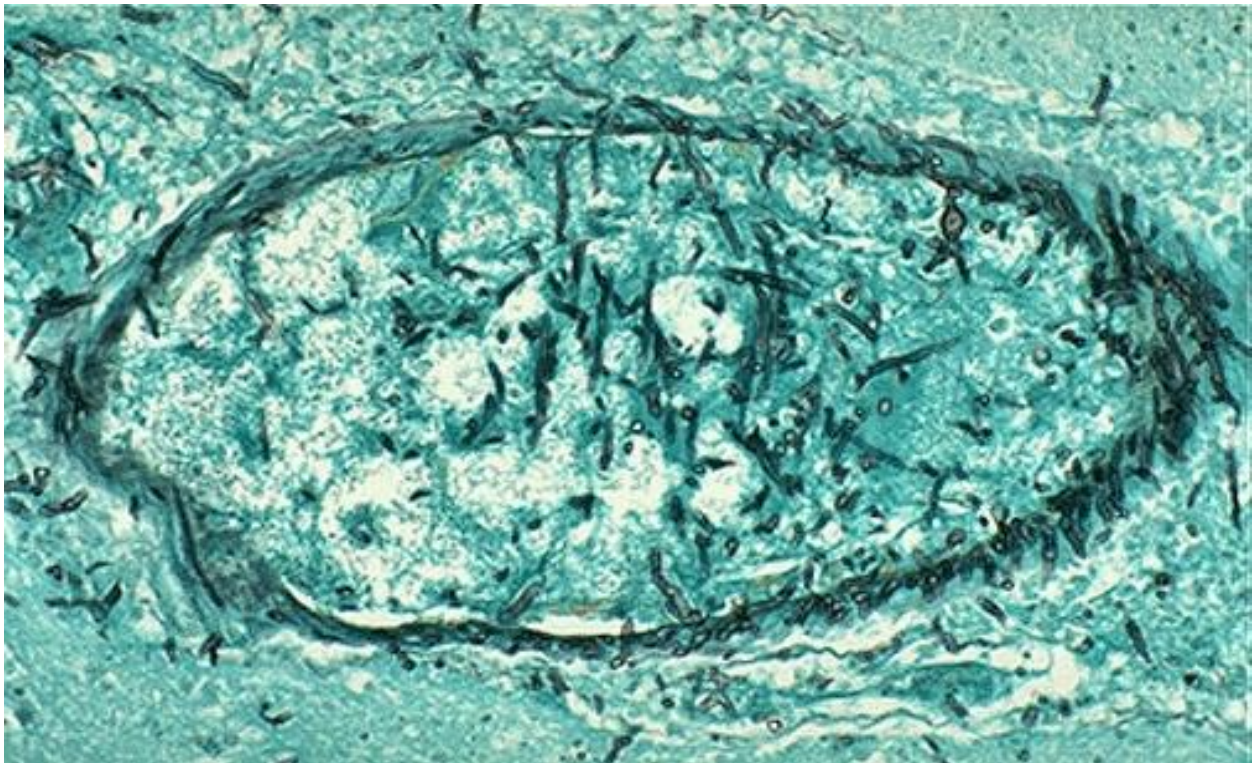
Answer: Transtentorial herniation

70- The duration :



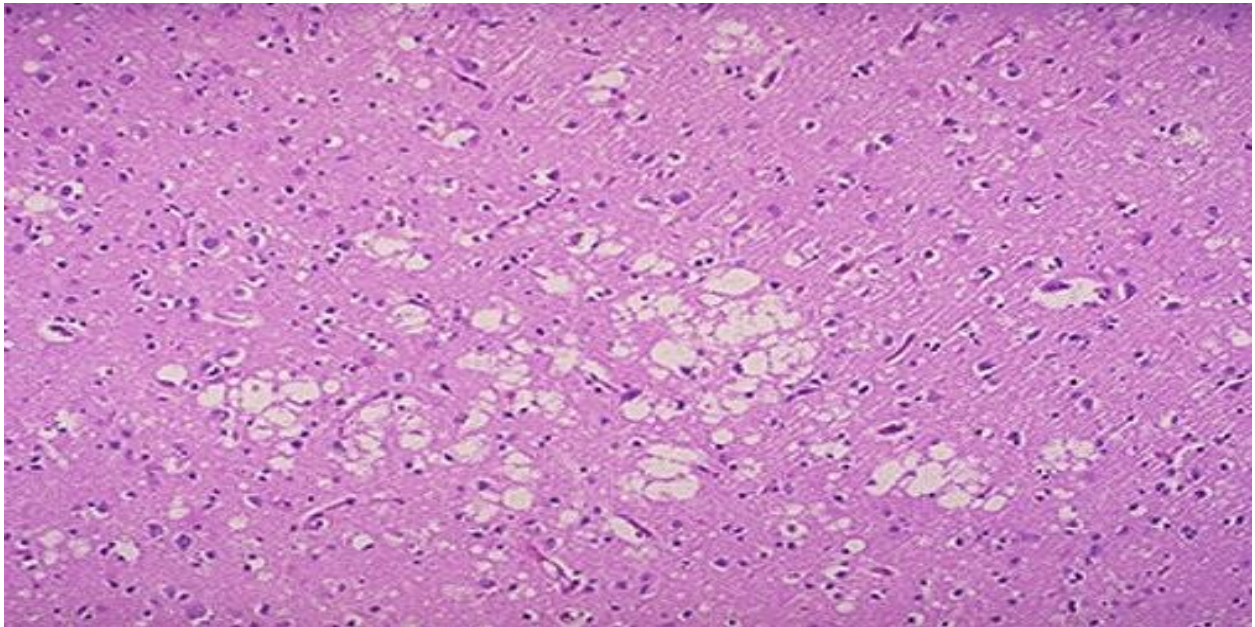
Answer : 48 hours

71- Case according to this picture :



Answer : Aspergillus

72- This disease is caused by:



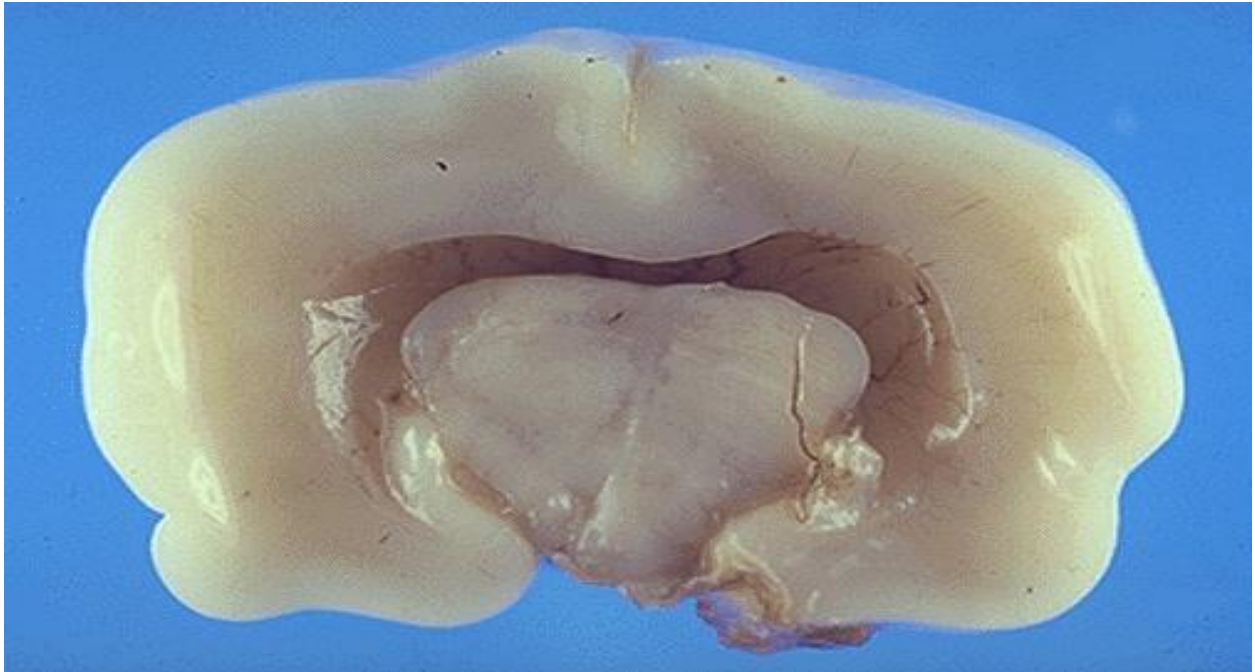
Answer :defected prion protein.

73-



Answer: Meningomyelocele

74-



Answer: Holoprosencephaly

Sorry for any mistake

Good Luck