

Medicine – Yarmouk University

Endocrine System / Med Exam

Elixir Batch

71 questions out of 80 questions
(6 of them are not well remembered / 16 are lab pictures)

Edited

1.DHT:

is the most potent form of testosterone

2. Desmopressin is better than Vasopressin:

it has selective effect on V2 receptors

3. Watery diarrhea, hypokalemia:

VIPoma

4. A patient with hyperthyroidism, all of the following are the causes of her hear palpitation except:

-B-adrenergic receptors

-ATPase activity on myosin head

-removal of calcium from the cytoplasm very quickly

-increased cardiac output

++NA/K ATPase activity (because this is responsible of heat intolerance)

5. In DM, all are increased except:

Adiponectin

6. A case with no menstrual cycle, cold intolerance, weight loss, loss of lateral visual field: Prolactinoma

7. Not true:

increased GH positively affect GHRH

8. A patient with pneumonia, has insulin treatment in the hospital due to:

she had a cortisol treatment, which elevates her glucose blood level

9. A patient had a headache for months, her blood pressure is high, she had a surgery to remove her left adrenal gland, but still have high blood pressure:

pheochromocytoma

10. Which of the following is related to endocrine system:

- act by hormones carried in the blood, but not autocrine or paracrine
- act by hormones carried in the blood, paracrine, but not autocrine
- act by hormones carried in the blood, autocrine, but not paracrine
- all hormones have the same synthesis, storage and use
- ++non of the above

11. Not true:

the ligand need a cofactor to bind its receptor

12. Target cell response depends on, EXCEPT:

- Quantity of receptors
- metabolism caused by the hormone
- other factors help the hormones in their action
- ++all are true

13. The enzyme of the rate limited step in epinephrine synthesis:

Tyrosine hydroxylase

14. Not true about adrenal steroidogenesis:

could be started with cholesterol and other factors

15. Which drug has the least action on ovulation:

Cabergoline

16. Which is not matched correctly:

Gestational diabetes – neonatal hyperglycemia

17. A case with hyperparathyroidism, hypoglycemia, all glands are enlarged:

Resistant to PTH

18. Which of the following is not true:

methylprednisolone is one of the replacement therapy

19. Not with inappropriate ADH secretion:

Hyponatremia and hypokalemia

20. Not true about aldosterone insufficiency:

it causes constipation

21. What dose make a children to have un-controlled diabetes:

-oral hypoglycemic agents

-a child use of insulin

-brittle DM

-the parents don't care (take the idea :3)

++all are true

22. Characteristic of nephropathy in DM:

Nodular glomerulosclerosis

23. Not true about G-protein coupled receptor signal pathway:

G-protein is a transmembrane protein

24. All are true about Obesogenic environment in Arab countries, EXCEPT:

-easy life

-easy transport

- western food types

-sedentary lifestyle

++childhood obesity

25. TSH: is stimulated by TRH

26. A girl with DM2, the important mechanism that help her to counteract (reverse) these episodes are mediated by, EXCEPT:

- use of candy
- glucagon administration
- increased body release of epinephrine
- increased body release of cortisol
- ++intravenous normal saline

27. 14 years old boy presents for a presummer camp physical examination. Routine urinalysis discloses 3+ glucoseuria. He admits to thirst and frequent urination, accompanied by a 4kg weight loss over the past few months. His parents note that he had a flu-like illness 5 months ago. His blood glucose is 220 mg/dL. which of the following best explains the pathogenesis of hyperglycemia in this patient?

- excess dietary glucose
- increased peripheral insulin uptake
- periphral insulin resistance
- irregular insulin secretion
- ++Islet cell destruction

28. Hypothyroidism case, all are true except:

increase weight and appetite

29. Glucagon is secreted by: alpha cells

30. A cut in pituitary stalk will increase: prolactin

31. A cut in pituitary gland will decrease: GH

32. About hypothalamus hypophyesal portal system:

from hypothalamus to the anterior pituitary

33. A drug has high anti inflammatory effect without salt retaining effect:

Dexamethasone

34. A drug which is not used for cushing syndrome treatment:

Metyrapne, ketoconazole, aminoglutethimide, Trilostane

answer: Eplerenone

35. Not true about insulin recombinants:

three times Lispro insulin doses and twice galarine before bed

36. Corticosteroids is contraindicated in all of the following except:

Anaphylactic shock

37. To avoid unwanted effects of Glucocorticoids:

-use the drug every other day

-use once daily morning dose

++all are true

38. A patient has a sore throat, very tender enlargement (case of hypothyroidism), which is the **least like to be the cause:**

-viral infection

-self limited in 2 months

++associated with non-hodgken B-cell lymphoma

39. an elderly patient who will have thyroidectomy, we give him:

prpranolol+MMI -- week gap – thyroidectomy – propranolone for 1 week

40. Not a steroid hormone: calcitonin

41. Not stored hormone: Aldosterone

42. Not true:

-80% of diabetes occur in low-middle income countries

-30% of DM2 patients are not diagnosed

-overall risk of dying among people with diabetes is at least double the risk of their peers without diabetes.

++DM1 can be prevented

43. All are true except:

-proinsulin, insulin, c-peptides are released from beta cells

-insulin and c peptide have 1:1 molar ratio

++normal insulin level is 50 microgram/L (the true is 25)

اسئلة تذكرنا فكرتها بدون جوابها

44. Does not cause atrophy in adrenal gland

45. True about primary hypoadrenalism

46. Not related to hyperthyroidism case

47. According to GH:

-secreted in pulstile manner

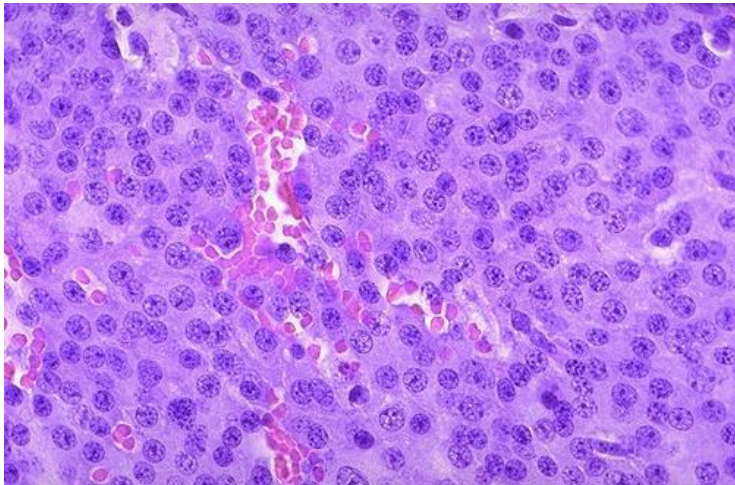
-stimulated by insulin

اسئلة تذكرنا خياراتها بدون السؤال

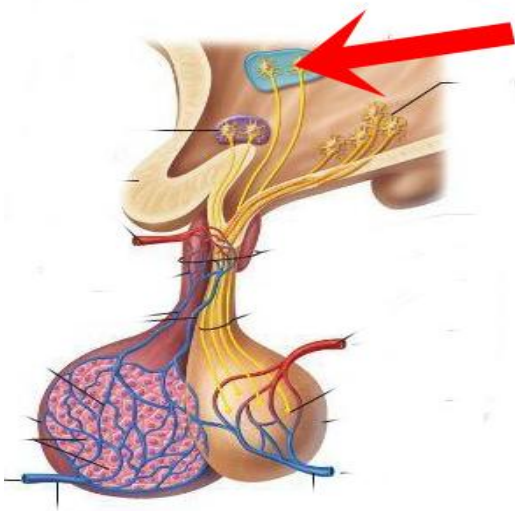
48. Nelson, Sheehan,....

49. Answer: increased TSH and TRH

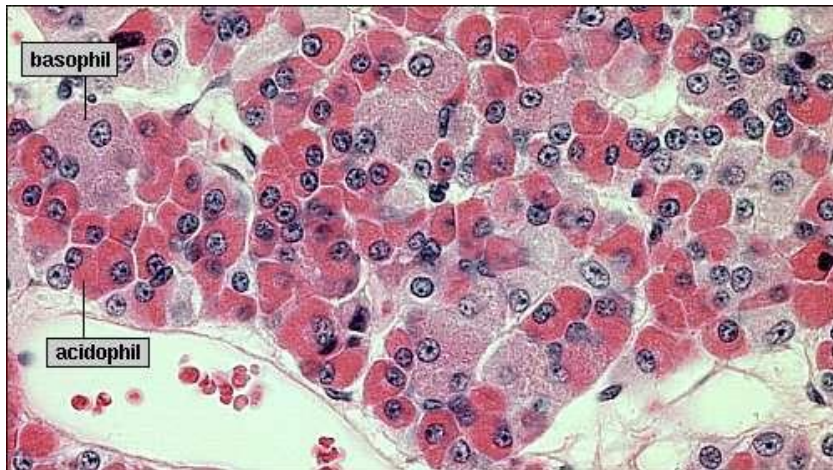
50. basophilic adenohipophyseal adenoma



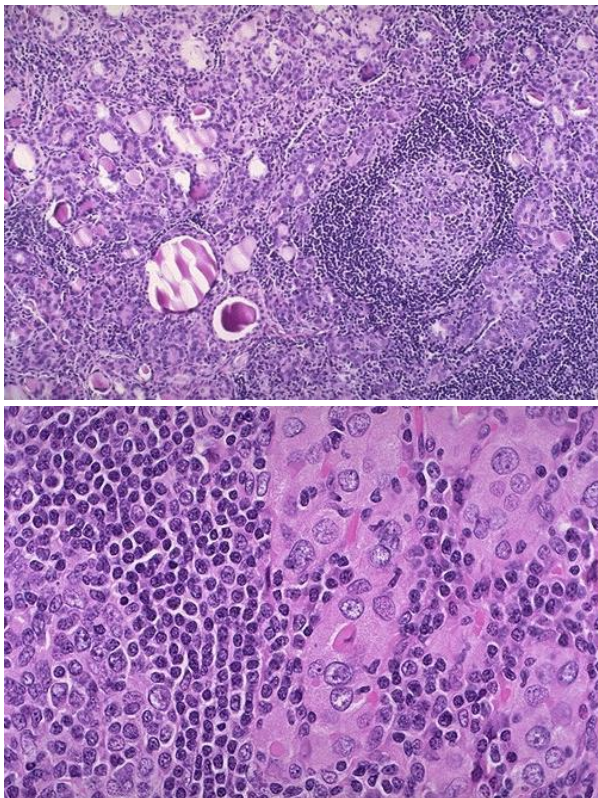
51. Release Oxytocin



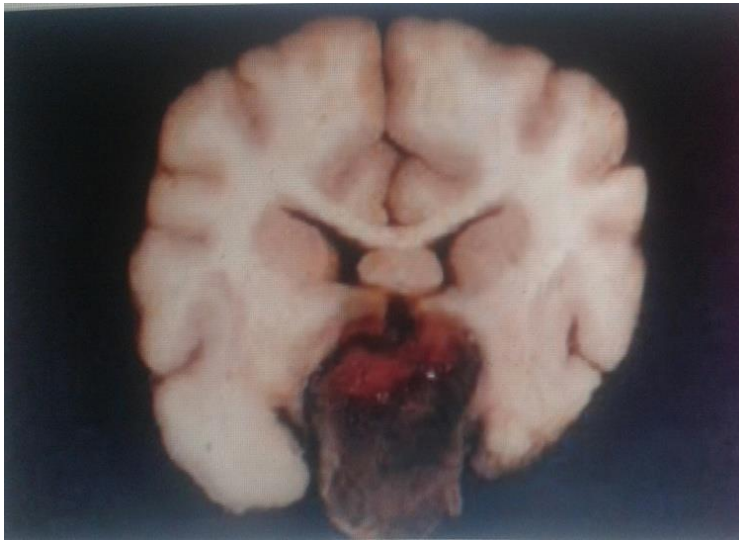
52. Acidophilic cell release: GH



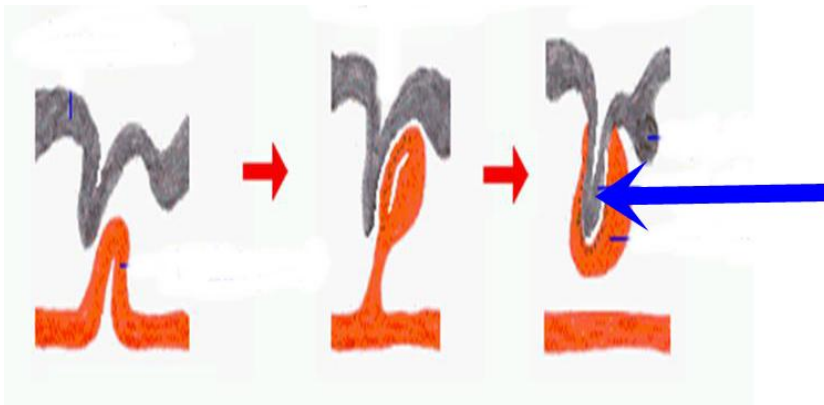
53. not related to this disease: dense fibrosis



54. Acute hemorrhage into adenoma



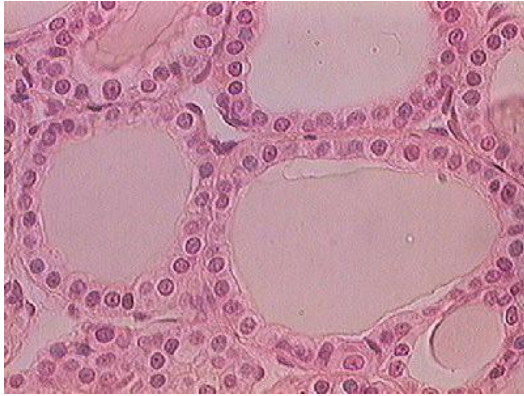
55. neurohypophyseal bud



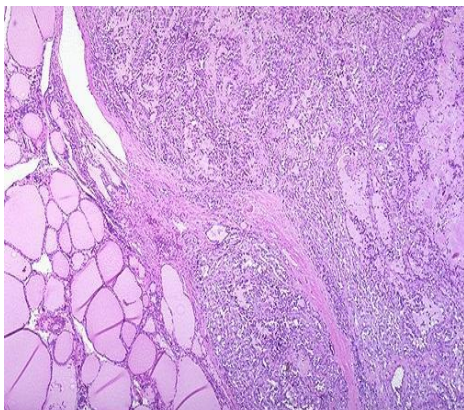
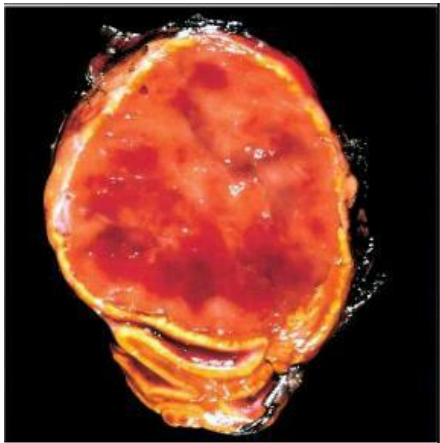
56. it is related to iodine insufficiency



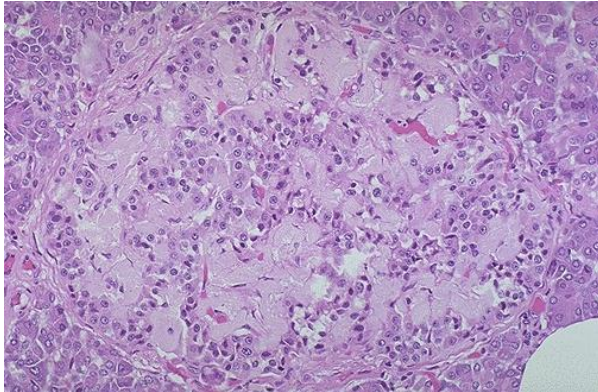
57. Thyroid gland



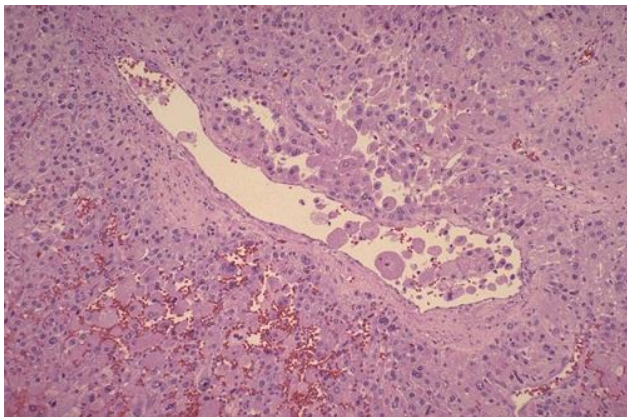
58. sipple syndrome



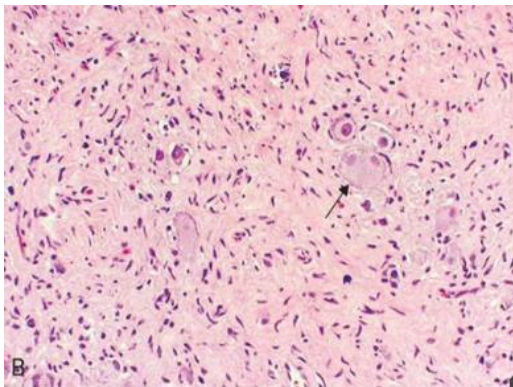
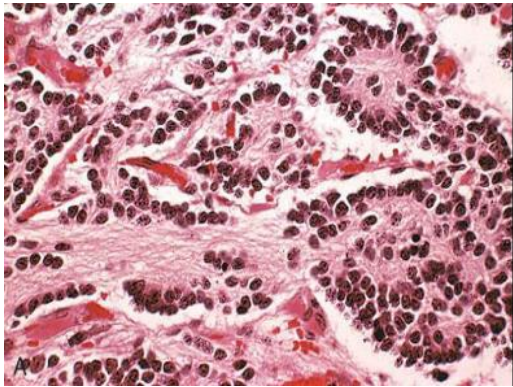
59. along his life he has been: insulin resistant



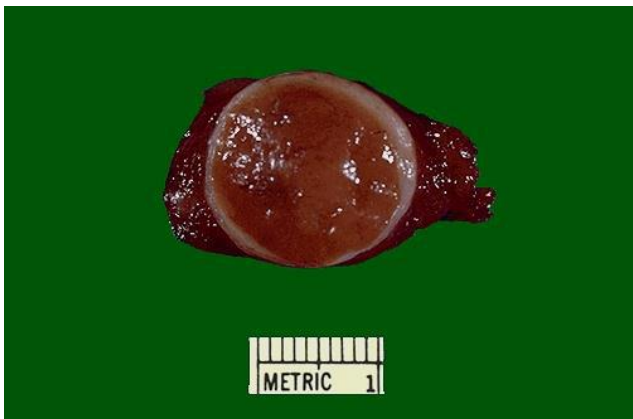
60. Adrenal cortical carcinoma



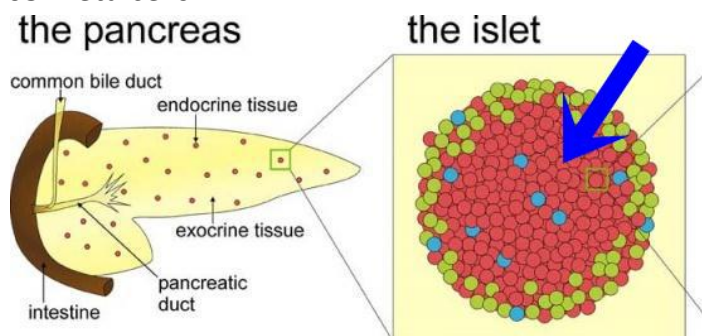
61. not related to this disease: zellballen



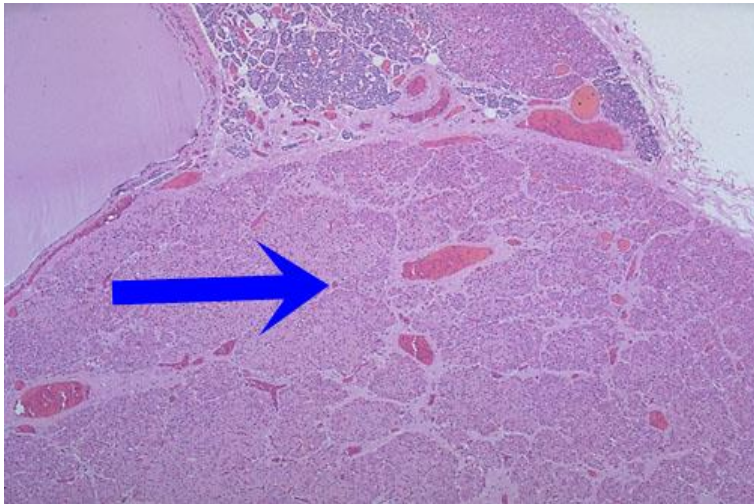
62. non-specific neoplasm



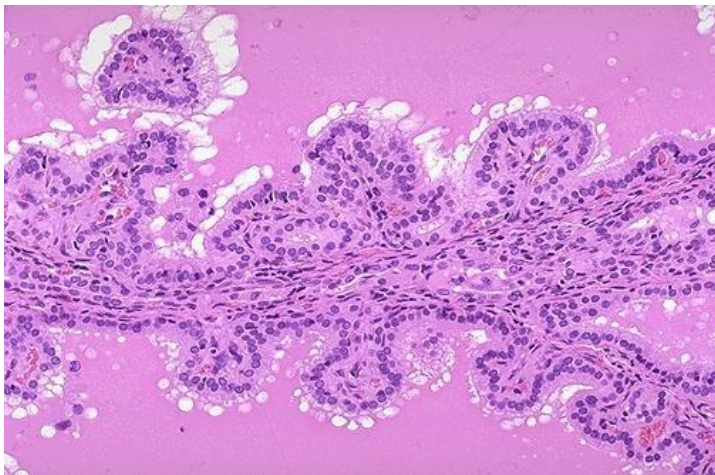
63. Beta cells
the pancreas



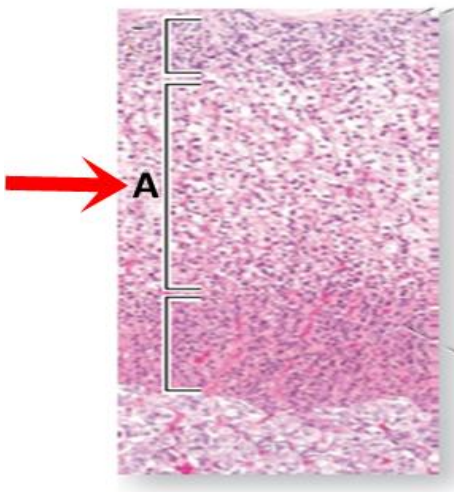
64. oxyphil cell parathyroid adenoma



65. not related to this disease: grooving cells



66. Zona fasciculata



67. Not true:

HbA1c measures blood glucose level for the prior 6 months

68. Thyroid gland cells are:

simple cuboidal epithelium

69. Drugs to treat hyperprolactinemia are NOT:

dopamine antagonists

70. Not true:

- DM will be the 7th leading cause of death in 2030
- Jordan is one of the top 10 in overweight population
- 34% above 25 years in Jordan have diabetes
- ++burden of diabetes is increasing globally due to rapid *decrease* in overweight, obesity, physical inactivity.

71. Hypoparathyroidism clinical appearance:

- decreased QT interval
- ++Tendon hyper-reflexia

We tried our best to remember the most helpful informations 😊

sorry for any mistake

GOOD LUCK

Collected by:

Ameera Mazen Mousa and Nadia kan'an / Elixir batch

دعواتكم