

LED BIO-LIGHT MACHINE 2.0

SPL



User Instructions

Unpacking: Thank you for purchasing the LED Bio-Light Therapy Machine (SPL). Every SPL has been thoroughly tested and has been shipped in perfect operating condition. Carefully check the shipping carton for damage that may have occurred during shipping. If the carton appears to be damaged, carefully inspect your fixture for any damage and be sure all accessories necessary to operate the unit has arrived intact. In the case damage has been found or parts are missing, please contact our toll free customer support number for further instructions. Do not return this unit to your dealer without first contacting customer support.

Introduction: Bio-Light Therapy is the interaction of light, delivered through Light Emitting Diodes (LEDs), to activate cell receptors causing them to produce collagen or multiply. LEDs offer a totally natural, non-ablative method for skin rejuvenation. The light from the LEDs interacts with cells and stimulates them to produce new collagen and elastin. Studies confirm that the same LED energy can be used to inhibit collagen formation, which can be helpful in the treatment of scars. By manipulating the wavelengths, cells can be turned on and off. Yellow light LEDs are used for lymph circulation and photo-rejuvenation. Blue light LEDs are used in the treatment of acne. Red light LEDs are used for PhotoDynamic therapy(PDT), collagen stimulation, blood circulation and scalp issue.

Customer Support: We provides a customer support line, to provide services for all our products. You may also visit us on the web at www.jean-moderns.com for any comments or suggestions Service Hours are Monday through Friday 10:00 a.m. to 5:00 p.m.



PLEASE recycle the shipping carton whenever possible.

To optimize the performance of this product, please read these operating instructions carefully to familiarize yourself with the basic operations of this unit. These instructions contain important safety information regarding the use and maintenance of this unit. Please keep this manual with the unit, for future reference..

- Seven Modes: Red, Blue, Yellow, Red+Blue, Red+Yellow, Blue+Yellow, Total
- High Power, High Frequency
- Adjusting Arm, adjusting treatment head
- Large treatment area
- 1,420 High Power SMD LEDs
- Multiple applications

The SPL carries a one year limited warranty. Your information will be recorded in our CRM system to validate the purchase. All returned service items whether under warranty or not, must be freight pre-paid. You should contact with our service department to ensure the problems. Don't send the machine to your dealer before you contact with our customer support. We'll finish the repair in 15 working days and then return the machine to the shipper.

We also provide lifetime services for all our products. You may need to pay for these services.

Warning! To prevent or reduce the risk of electrical shock or fire, do not expose this unit to rain or moisture.

Caution! There are no user serviceable parts inside this unit. Do not attempt any repair yourself, doing so will void your manufacturer's warranty. In the unlikely event your unit may require service please contact *us*.



- To reduce the risk of electrical shock or fire, do not expose this unit rain or moisture
- Do not spill water or other liquids into or on to your unit.
- Be sure that the local power outlet match that of the required voltage for your unit.
- Do not attempt to operate this unit if the power cord has been frayed or broken.
- Disconnect from main power before making any type of connection.



- Do not remove the cover under any conditions. There are no user serviceable parts inside.
- Never operate this unit when it's cover is removed.
- Never plug this unit in to a dimmer pack
- Always be sure to mount this unit in an area that will allow proper ventilation. Allow about 6" (15cm) between this device and a wall.
- Do not attempt to operate this unit, if it becomes damaged.
- This unit is intended for indoor use only, use of this product outdoors voids all warranties.
- During long periods of non-use, disconnect the unit's main power.
- Always mount this unit in safe and stable matter.
- Power-supply cords should be routed so that they are not likely to be walked on or pinched by items placed upon or against them, paying particular attention to the point they exit from the unit.
- The fixture should be cleaned as recommended by the manufacturer.



- Do not use the machine over 60 minutes on one treatment area.
- Keep the machine away from water.

***Machine Parts***

a: Adjusting Arm

b: LED Treatment Head

c: Knobs that adjust the angel of the treatment head

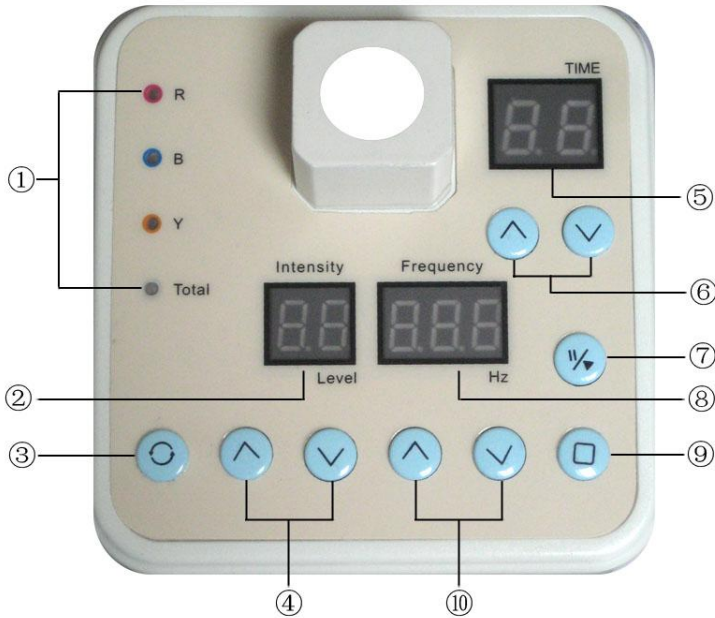
d: Control Panel

e: Power Switch

f: Fixture for power cord

g: Electric Outlet

h: Rolling Pedestal



Control Panel

- ① Indicators: show the selected function(color)
- ② Screen 1: show current light power
- ③ Function Selection: select the functions(colors)
- ④ Power Adjusting Button: adjust the light power(1~10 levels)
- ⑤ Screen 2: show current treatment time
- ⑥ Time Adjusting Button: adjust the treatment time(1~60 minutes)
- ⑦ ON/PAUSE: turn on the light/pause
- ⑧ Screen 3: show current light frequency
- ⑨ STOP: turn off the light,stop current treatment
- ⑩ Frequency Adjusting Button: adjust pulse frequency of the light

What's in the package?

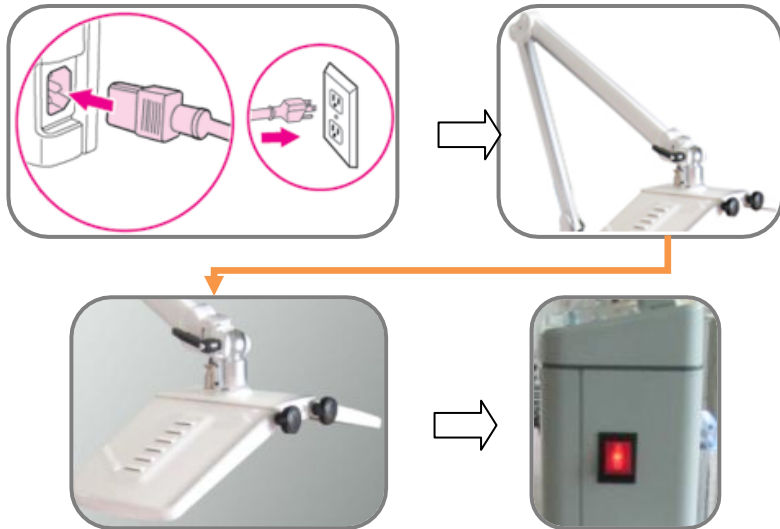
The Machine



Power Cord



User Manual

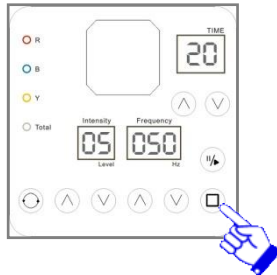
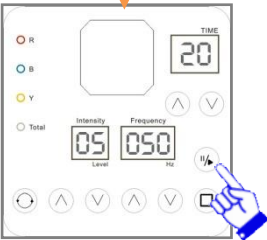
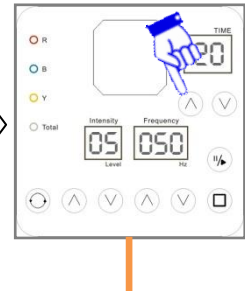
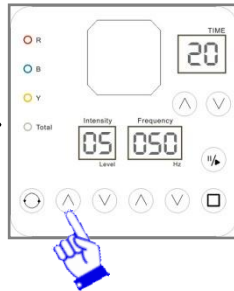
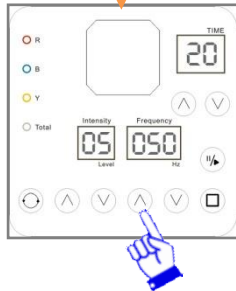
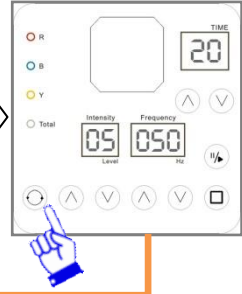
How to get started?

Power Supply: connect the machine to the power supply with the power cord.

Adjusting Arm: adjust the arm to get a suitable place for treatment.

Treatment Head: adjust the angle of the treatment head; adjust the distance between the LED head and the treatment area to 10cm~15cm.

Power Switch: switch on the machine



- 1.Put on the eye cover→2.Turn on the machine→3.Select the function(color)
- 4.Adjust the frequency→5.Adjust the light power→6.Adjust the treatment time
- 7.Press 'ON' to work,press again to pause→8.Press 'STOP' to stop

CAUTIONS:

- The machine will stop automatically when the time's over with tones.
- Clean the treatment are before the treatment starts.
- Put the cosmetics on the treatment are if needed.
- The treatment time is usually about 20 min.~30 min.

Treatment Settings:

Function	Time(Minute)		Light Frequency(Hz)		Light Power(Level)	
	default	Value	default	Value	default	Value
Red	20	15~30	50	70~110 (or 0)	5	7~10
Blue	20	15~30	50	70~110 (or 0)	5	7~10
Yellow	15	15~30	50	70~110 (or 0)	5	7~10
Red+Blue	20	15~30	50	70~110 (or 0)	5	7~10
Red+Yellow	20	15~30	50	70~110 (or 0)	5	7~10
Blue+Yellow	20	15~30	50	70~110 (or 0)	5	7~10
Total	20	15~30	50	70~110 (or 0)	5	7~10

When the light frequency is 0, it means the light is working continuously.

Functions:

Red Light: Anti-aging, rosacea, flushing, stimulates the collagen, smoothes skin

Blue Light: Acne treatment, anti-inflammatory

Yellow Light: Photo rejuvenation, improves the lymph and blood circulation

Red+Blue: Effective acne treatment, clears and smoothes skin, anti-inflammatory, anti-bacterial, reduced chance of scarring

Red+Yellow: Reduce fine lines and wrinkles, clear blemishes and spots, Increase size and number of collagen, improves elastin, rejuvenates Skin

Blue+Yellow: Acne treatment and smoothes skin

Total: Red+Blue+Yellow, for anti-aging, photo rejuvenation, skin smoothing

Your skin might be dry after Bio-Light treatment.

Bio-Light SPL**Environmental Condition**

Environment	Temperature	<i>Operation: 10°C to 40°C (50°F to 104°F)</i> <i>Storage: -15°C to 70°C (5°F to 158°F)</i> <i>Transportation: -15°C to 70°C (5°F to 158°F)</i>
	Humidity	<i>Operation: 30% to 90% non-condensing</i> <i>Storage: 30% to 90% non-condensing</i> <i>Transportation: 30% to 90% non-condensing</i>

Bio-Light SPL**Daily Maintenance**

- ◆ Don't use or put the machine in a place that doesn't match the environment conditions.
- ◆ Cut off the power supply after treatments; Pull out the power cord if you will not use the machine in quite a long time.
- ◆ If you will not use the machine in several days, cover the LED treatment head with a piece of clean cloth or plastic paper.
- ◆ Avoid any damage to the LEDs.
- ◆ Clean the LED treatment head constantly. Cut off the power supply and make sure the treatment head cool down before cleaning it.
- ◆ Don't use gasoline, alcohol, diluent or rag through chemical treatment to clean the treatment head and the surface of the machine.
- ◆ Make sure the treatment head dry before use it again.

1. Professional Use

The merchandise of our Products is designed for professional use only and must be installed by a licensed professional electrician only. Failure to do so will void customer warranty.

2. Manufacturer Defects

In the event of defects in material and workmanship our obligation shall be limited to free labor and parts repair or replacement, solely at our option, of any defective part for a period of one year from the date of purchase.

3. Disclaimer of Damages

The remedies provided herein are the buyer's sole and exclusive remedies and in no event shall our Products be liable for direct, indirect, special, incidental, or consequential damages (including loss of profits) whether based on contract, tort, or any other legal theory.

4. Returns

All damaged machines must be returned in 15 days after receiving the confirmation from our service department.

5. Shipping Policy

For your protection, the acceptance of this shipment by the Transportation Company is an acknowledgement that the articles were delivered to them in GOOD WORKING CONDITION AND PROPERLY PACKED.

6. Exceptions

*Inappropriate damage such as: dramatic impact, vibration, drop, condenser chamber burning, crystal rods destroying, etc.

*Inappropriate damage to the loss of key components such as the skinheads, protective glasses, power lines, such as foot gate, You will be charged for the cost of accessories.

*Consumer who repairs the machine caused by improper by himself.

*Due to irresistible forces (such as fires, earthquakes and other natural disasters) of damage.

*Beyond the period of warranty products.

Model:	SPL
LED Colors:	Red(650nm-655nm), Blue(465nm-475nm), Yellow(588nm-595nm), Red+Blue, Red+Yellow, Blue+Yellow,Red+Blue+Yellow
Light Power:	1-10 Levels <i>Max 60mW/LED</i>
Pulse Frequency:	0-110 Hz(0 means continuous mode)
Time:	1-60 Minutes
Treatment Area:	50cm×20cm
LED Numbers:	1,420
Gross Weight:	20 KG
Dimension:	70cm×45cm×142cm
Packing Size:	92cm×45cm×32cm
Electrical:	100~240VAC, 50/60Hz(self-adaptive)