

***Marijuana***  
***Nutrient***  
***Deficiency***  
***Quick Guide***



**Sensi Garden**

# CONTENTS

01 Intro

02 PH Issues

03 The Big 3 : N-P-K

06 Friends for Life : Cal-Mag

08 Trace Elements



- 08 Zinc
- 09 Sulfur
- 10 Iron
- 11 Manganese
- 12 Copper
- 13 Boron
- 13 Molybdenum
- 14 Bonus - Quick Charts





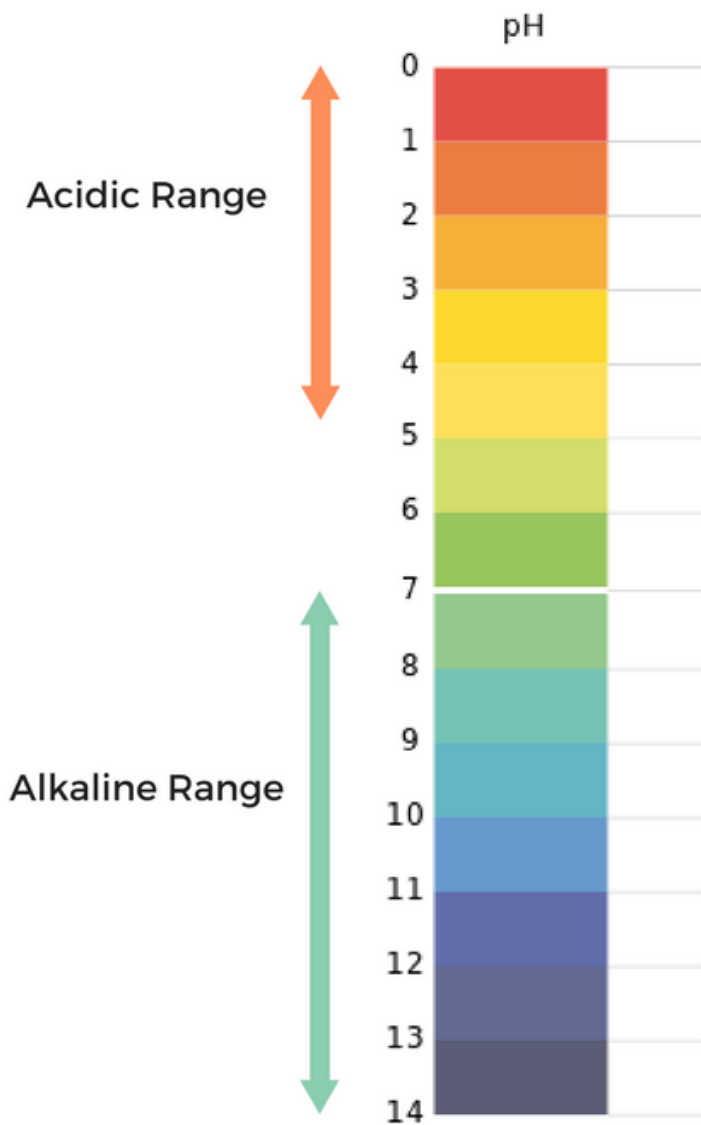
I would like to say Thank you for checking out  
Sensi Garden.

Here is the Nutrient Deficiency Quick Guide  
For reference when your marijuana plants  
are having some problems.

Grow on my friends

Parker Lewis

# PH ISSUES WITH GROW MEDIUMS



## Nutrients Impacted

- Potassium
- Calcium
- Magnesium
- Molybdenum
- Phosphorus

- Zinc
- Maganese
- Iron
- Copper
- Sulfur
- Boron

If you suspect you have a Nutrient Deficiency you can check your grow medium PH Levels.

It might be able to guide you. On what type of deficiency your marijuana plants may be struggling with.

THE BIG 3 :

# Nitrogen

Common Signs to look for:

- Leaves start turning pale green
- Red stems
- Yellowing of the lower leaves
- Browning of leaves
- Yellowing of the veins of a marijuana leaf
- Leaves drooping
- Wilting
- Leaves break off
- Slow growth rate during vegetative stage



Sensi Garden





THE BIG 3 :

# Phosphorus

Common Signs to look for:

- Leaves turn to a blue-green color
- Lower leaves are affected first
- Lower leaves turn yellow and brown
- Stem can turn a purple color
- Leaves have blotches of brown or blue
- Slow growth
- Affected leaves start to curl in strange shapes



THE BIG 3 :

# Potassium

Common Signs to look for:

- Stunted growth
- Moves from bottom of plant to top
- Yellow or white spots on leaves
- Yellow, Browning or blackening of leaf tips
- Stems become weak and brittle
- Space between branches may increase
- May look like nutrient burn
- Also, resembles heat stress
- Yellow leaves (older) bottom
- Leaves curl under



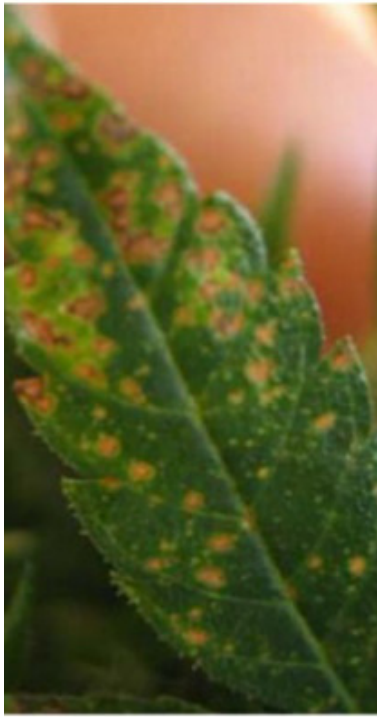


FRIENDS FOR LIFE:

# Calcium

Common Signs to look for:

- Upper leaf issues show spotting first
- Yellow, brown spots appear on leaf and tips
- Stunted growth
- Lower leaves curl and twist
- Flower development is slow
- Brown or dark spots on leaves
- Random pattern of spots
- Stems start to become weak
- Roots have little development
- Roots begin to die in extreme cases



Sensi Garden



FRIENDS FOR LIFE:

# Magnesium

Common Signs to look for:

The deficiency can occur 4-6 weeks before any symptoms appear.



- Yellowing outside the veins of the marijuana leaf
- Brown spots appear on older leaves
- Leaves have a pale green color
- Old leaves curl, dry and start to fall off
- Look sick overall
- Drooping appearance
- Tips of leaves may appear slightly burned
- Marijuana leaves curling down



## TRACE ELEMENTS

# Zinc

Common Signs to look for:

- Yellowing between the veins, in new and young leaves
- New Leafs are small and thin and appear twisted
- New leaf growth is pale yellow-green
- The tips of leaves appear burnt
- Inter-node spacing is reduced
- Growth is stunted
- Buds are thin and light to the touch
- During flowering buds will start to twist
- Stems fail to grow and stretch leaving minute leaves
- End yields are small





## TRACE ELEMENTS

# Sulfur

Common Signs to look for:

- New leaves turn lime green to yellow
- Stunted growth
- Leaf veins will eventually turn yellow
- Leaf tips can appear burnt
- Long purple streaks on stalk
- Leaf tips may hook downward
- Leaf color is pale
- Stalk turn woody
- Small bud deveeolpment





## TRACE ELEMENTS

# Iron

Common Signs to look for:



- Yellowing outside the veins of the marijuana leaf
- Young leaves show yellow from **opposite** the tips of the leaf
- Slow growth
- Bigger leaves will start to yellow between veins of leaf
- Leaves will start to show signs of burnt tips
- Eventually leaf will fall off
- Pale green leaf color
- Veins remain green
- Thin bud development



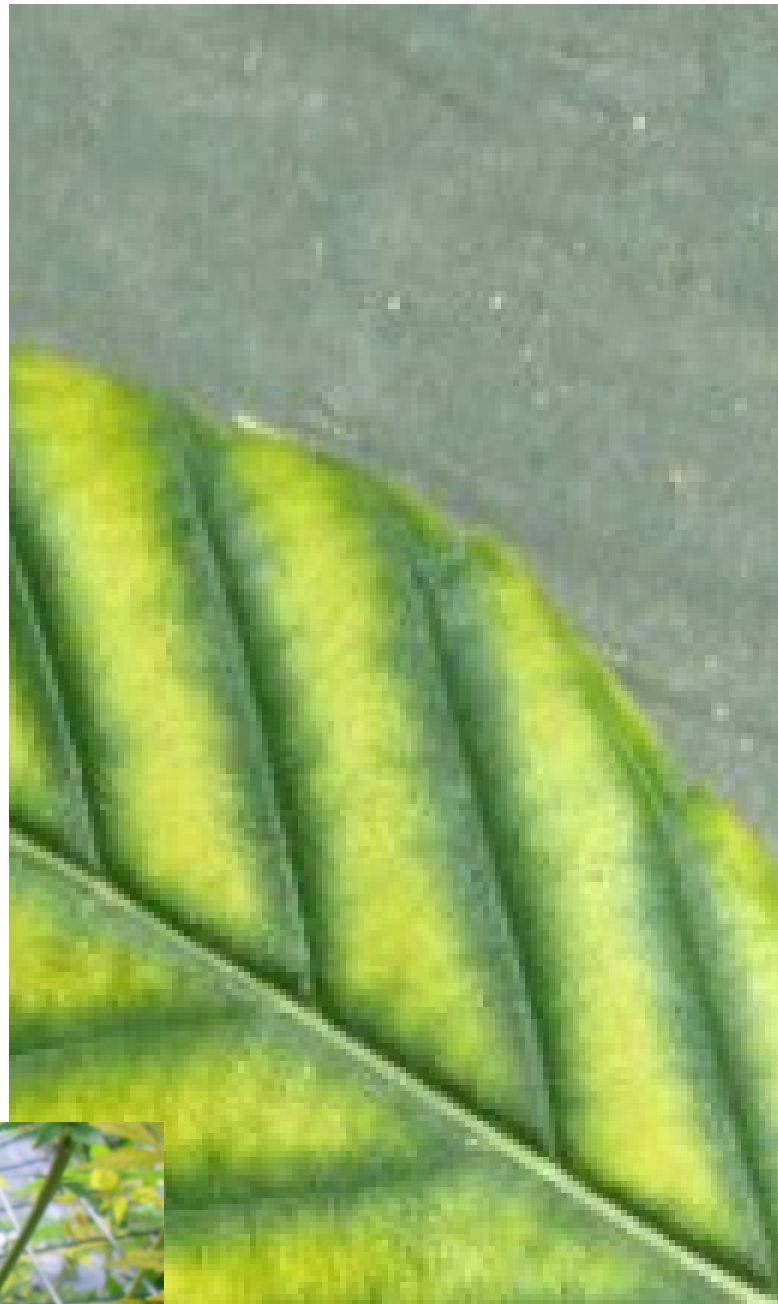


## TRACE ELEMENTS

# Manganese

Common Signs to look for:

- New leaves show yellowing between veins
- Dead spots appear on badly damaged leaves
- Dark green surrounding yellowing
- Moves from top to bottom
- Slow growth
- Random spotting
- Brown dark spots
- Yellow leaves (older) bottom
- Leaves curl under



# Copper



Common Signs to look for:

- New leaves wilt and contort shapes
- Leaf edges turn dark green to copper gray
- Slow growth
- Yield is small
- Weak stems
- Wilting or droopy appearance
- Leaf tips start dying
- Edges of leaf appear burnt



## TRACE ELEMENTS

# Boron

Common Signs to look for:

- New shoots appear burnt and twisted
- Dark brown spots between the veins
- Leaf becomes thick then brittle
- Tips, stems grow twisted
- Rust colored on stem appear new grow medium
- Leaves become dark green with purple
- Leaves will start to show signs of burnt tip



---

## TRACE ELEMENTS

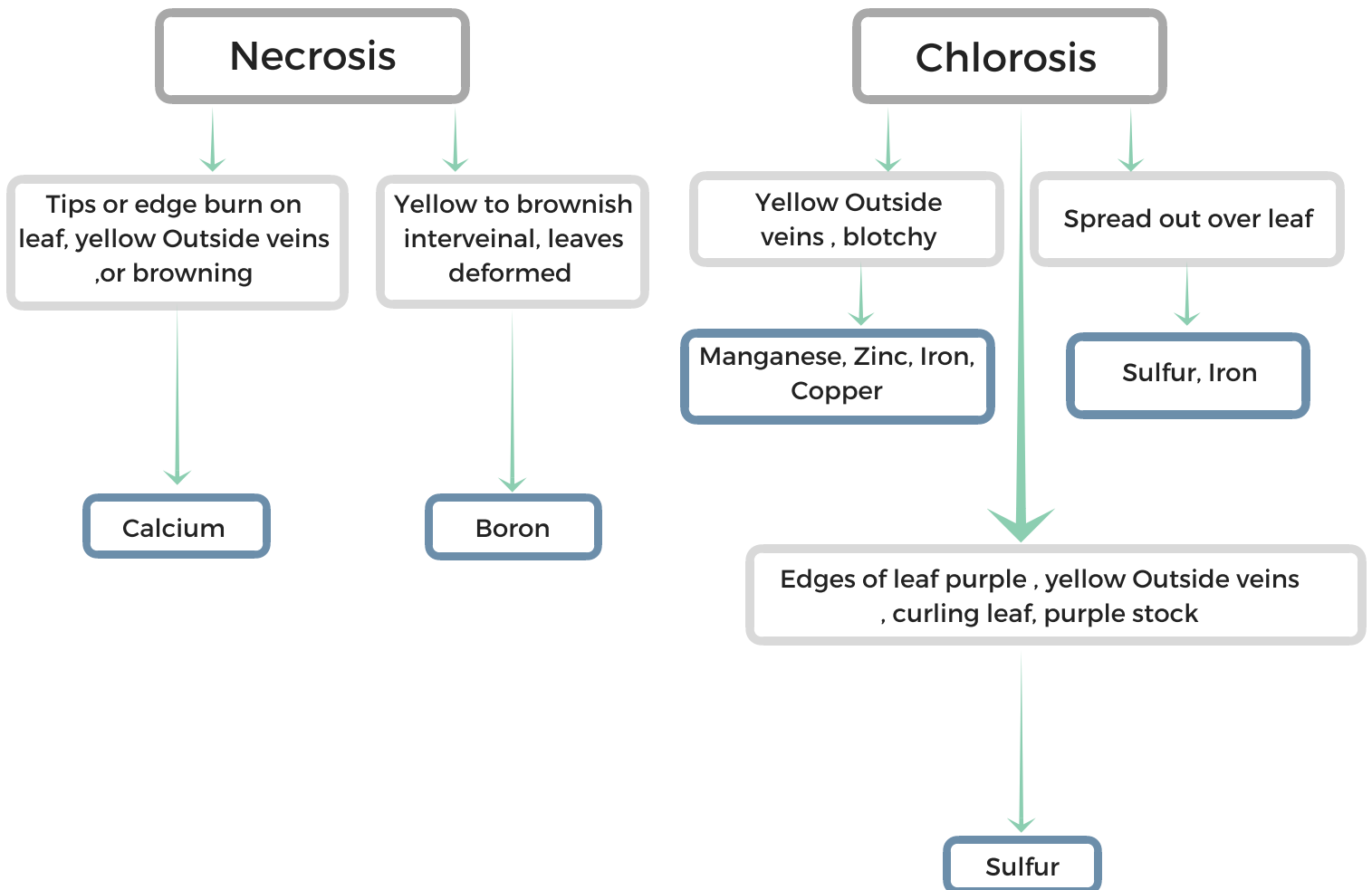
# Molybdenum

Common Signs to look for:



- Cold weather old leaves yellow
- Possible yellow between the veins
- Leaf becomes thick then brittle
- Tips, stems grow twisted
- Old and new leaves drop off
- Brown dark spots
- Leaf color is pale
- Reddish pink colored leaf

# Young Leaves





# Mature Leaves



## Necrosis

Yellow Outside veins , or browning blotchy

Magnesium

Tips or edge burn on leaf, yellow Outside veins or browning

Potassium

## Chlorosis

Yellow Outside veins , or blotchy

Magnesium

Spread out over leaf, small leaf

Nitrogen

Could be Sulfur , if on young leaves

***Thank you for your Support***



**Sensi Garden**